



001
十九世纪 磁州窑童子瓷枕

A Cizhou porcelain pillow, in form of kneeling boy, bent over and leaning on his elbows, the hair in twin top knots, with a blissful smile on his face, one leg has been repaired. L:35.5cm

\$100-\$150

002
十九世纪 磁州窑猫形枕

A cat form porcelain pillow with cream and brown glaze, depicting a cat lying on a rectangular support, face lively depicted, facial and body details lighted with brown glaze. L:33cm

\$300-\$500



003
十九世纪 金漆木雕佛像

A 19th century wooden carved figure, wearing a long rope and religious hat, sitting cross-legged with hands in praying position, overall in gold tone with details highlighted in red, the ungilded base reveals the wood. H:22cm

\$200-\$300





004
十九世纪 金漆“福狮与随从”建筑遗件

Of rectangular form, pierced and carved in high relief, depicting a figure and a beast, gilt on the surface, the base and the back reveals the wood. 21.5cm x 8.5cm x 7.5cm

\$100-\$150



005
明 / 清时期 出口青花小瓷器一组

Comprising two jars with covers, two well-shaped dishes and a small teacup, landscape dish is 18th Century, double happiness cup 19th Century, pair of ginger jarlets and dragon bowl, 17th Century, 5 Pieces. Largest dish diam: 14.5cm

\$300-\$400



006
十九世纪 刻花银小罐

Of circular bellied form, the body embossed with kneeling and standing figures amongst threes, background decorated with the changing colour fish-scale pattern. H:13cm Diam:8.5cm

\$200-\$300



007
玉佩件一组九件

A group of nine jade pendants, with varied shapes and designs.

\$100-\$300



008
玉佩件一组十六件

A group of sixteen jade pendants, with varied shapes and designs.

\$100-\$300



009
二十世纪中期 印度尼西亚油画

Painted by an Indonesian artist, with oil paint, depicting an evening landscape, overall of greenish - blue tone, signed with red paint on the lower right corner. 61.5cm x 41cm without frame

\$400-\$600



010
十九世纪 镀金佛教器皿盖豆

A gilt Buddhist vessel, the deep rounded sides rising to a straight rim, supported in a columnar base encircled with a raised band and terminating in a flared pedestal foot, surmounted by a conforming dome cover, with a knot shape knob. H:27cm

\$400-\$600



011
宋 铜制小耳方瓶 带底座

Of square section, the baluster body rising to a slightly flared rim with cusped corners, flanked by two loop handle decoration, made with bronze, accompanied with a fitted wooden stand. H:6.5cm W:4cm

\$800-\$1200



012
铜镜

Cast in relief with a central knob surrounded by four beasts. Diam: 9cm

\$500-\$800



013
晚清 粉彩人物小盒

Of circular form, the domed cover decorated with children playing, the box decorated with bamboo leaves, and chrysanthemum, red Jianding seal mark on the base. Diam:9.6cm

\$500-\$800



014
紫砂四格盖盘

Of circular form, the domed cover with a handle in the middle, the box rising from a short foot, is separated into four parts, interior decorated with cracked glazed porcelain, a seal mark on the exterior, red Jianding mark on the base. Diam:16.1cm

\$300-\$500



015
粉彩挂瓶一对 李明亮款

Each with a flat-backed pear-shape body rising from a spreading foot to a barbed rim, flanked with two ring handles, symmetrically painted with the cicada, scholar's stone, and magnolia. H: 21.5cm each

\$1000-\$1500



016
龙泉小盃

Of conical form, rising from a short foot to a flared rim, the interior with two small boys each grasping a meandering stem issuing a profusion of layered and furled leaves and four five-petaled flower heads, covered overall in a semi-transparent olive-green glaze pooling in the recesses of the moulded design. Diam: 10cm

\$300-\$500



017
青花龙纹小碗 《大清光绪年制》款

Finely potted with deep rounded sides, outcurving at the flared rim, decorated with dragon playing ball, supported on a short straight foot, six-character 'Da Qing Guang Xu' seal mark on the bottom. H:6.5cm Diam:10.5cm

\$300-\$500



018
粉彩人物笔筒，花鸟盖盒一组

A famille-rose brush pot, of the cylindrical body, decorated with human figure and calligraphy, underglazed foot-rim reveals the buff-body, seven-character red seal mark on the base. Diam: 7.2cm H:12.2cm; A famille-rose censer of overall rectangular shape, with a knob handle in the middle, the cover decorated with peony, pine tree, morning glory, gourd, and crane, the body decorated with calligraphy and daisy, red Jianding seal mark on the base. 10.5cm x 13cm x 6cm

\$300-\$500



019
青花云龙纹瓶

A blue and white pear-shaped vase, of the globular body rising to a waisted elongated neck, decorated with dragons and clouds, red Jianding seal mark on the base. H:17cm

\$300-\$500



020
刻字紫砂瓶

A Zisha vase, of tapered shape, rising to a short mouth, body carved with calligraphy, red Jianding seal mark on the base. H: 12.5cm

\$500-\$800



021
十七世纪 铜制哦干贡噶桑波像

A bronze immortal figure, collector's note identified as NGORCHEN KUNGA SANGPO. H:10.5cm

\$3000-\$4000



022
十八世纪 铜鎏金宗喀巴像

A gilt bronze immortal figure with a pointed hat and long rope. H: 14cm

\$2000-\$3000



023
浅绛彩山水花鸟图琮瓶

One side painted with a landscape, peony, and bird, the opposing side with lotus and a bird, the remaining two sides each with an elephant-head handle above a poetic verse. Of rectangular body rising to an everted mouth rim, supported on a short foot. H:34.5cm

\$2000-\$3000



024
矾红蝙蝠花纹碗 《大清雍正年制》款

Of globular shape painted around the exterior in shades of iron red on the white ground with bats interlaced flowers, the base inscribed in blue with a six-character seal mark. Diam: 13.5cm H: 6.5cm

\$300-\$500



025
玉雕象

Vividly depicted an elephant, back covered with a carpet decorated with cloud pattern, and with a ruyi, the stone of creamy white tone with russet colour. H:6cm W:8cm

\$5000-\$8000



026
晚清 石砚

Of trapezoidal shape, the smooth riding surface with two holes to form the water trough. H: 26cm W:15.5cm

\$800-\$1200



027
黄地粉彩花卉纹碗 《雍正御制》款

The deep rounded sides rising from a short foot, the exterior densely wreathed in pink and green poney with branches, all against a bright yellow ground, the white interior with no decoration, the base with a four-character 'Yong Zheng Yu Zhi' seal mark in blue. Accompanied by a wooden stand. Diam: 14.1cm

\$200-\$300



028
清 仿木纹鼓式镇纸

Of hexagonal drum shape, pierced around the body with beast symbol and pierced top with 'coin' shape, covered with russet and brown glaze, top and lower body decorated with gold interlaced flower pattern, the body decorated imitating agate. H: 6cm W:8.5cm

\$1500-\$2000



029
十七 / 十八世纪 青花直口瓶一对

The rounded sides rising from a spreading foot to a straight mouth, both vase overall decorated with grape vines and hanging vines. H: 24cm

\$1500-\$2000



030
十九世纪中 蓝地五彩人物罐 带木盖

Of tapered-globular form rising to a short straight cylindrical neck, the body painted in famille-verte enamels with scenes of officers in an interior and the reverse painted with poney and branches, all against a blue ground, the interior and base glazed white, accompanied with a wooden cover, with marks of repairment. H:21cm.

\$300-\$500



031
青白玉雕挂佩

Of rectangular form, carved in low relief with a floral sprig. W:3.5cm H:5.5cm

\$500-\$700



032
清 青玉荷叶笔洗带玉象

A set of two jade objects, one carved as a curved lotus leaf brushwasher supporting on a root-shape base, one carved as an elephant, both stones of celadon and russet tone. W:8.5cm, 5cm H: 3.3cm, 4cm

\$500-\$800



033
和田白玉挂件

Of oval form, carved with two pumpkins, white gourd, and butterfly, the stone of creamy white tone with russet colour highlights the pumpkins. W: 4cm L:5cm

\$1000-\$1500



034
白玉熊

Depicting a sitting bear, with mouth and eyes opened, the stone of celadon tone, with russet colour on the back and cotton-like white. H: 9cm

\$500-\$1000



035
项链一组两串

A group of two necklace comprising of a blue beads necklace and a green beads necklace.

\$100-\$200



036
翡翠挂件三个

A set of three jadeite pendants, two with karat gold hanger including one with diamonds, comprising a cabbage pendant of white tone, a Guanyin pendant of yellow tone and a fish and lotus leaves pendant of the green tone. H:3.5cm , 4cm , 5cm

\$600-\$800



037
“博古堂”款 砚连盒

The inkstone of symmetrical form, carved with calligraphy, of black colour, with a circle water pool in the centre, all enclosed in a fitted wooden box and cover titled 'Bo Gu Tang'. W: 18.6 H:27cm

\$400-\$500



038
窑变釉葫芦瓶 《大清雍正年制》款

The globular lower bulb rising to a tall upper bulb and a long waisted neck, all supporting on a short foot, covered with red, russet, and green glaze, six-character Yong Zheng mark on the base. H: 21cm

\$500-\$600



039
清 粉彩带盖小罐

Of compressed globular body raising to a short cylindrical neck, painted with interlaced poney and butterfly on the body all below a 'ruyi' pattern band, the neck with painted flowers and the foot with a lappet band, the cover similarly decorated, red 'Jianding' seal mark on the base. H: 14cm

\$500-\$800



040
紫晶人物雕

Carved amethyst, depicting human figures, a Guanyin in the middle surrounding by few boys, accompanied with a wood support. H: 14cm with stand

\$300-\$500



041
青金石松树瓶

A pine tree shape lapis lazuli vase, accompanied with a wood support, the vase of tapered form, with a fitted cover. H: 17cm with stand

\$300-\$500



042
佚名 山水人物
镜心 设色纸本

Depicting a scholar and an attendant within a landscape scene, unknown artist, color and ink on paper.

\$300-\$500



043
王翠款 山水人物
镜心 设色纸本

Depicting a mountain with rocks and trees and houses, signed Wanghui, with three artist's seal mark and five Shou Cang seals, framed, color and ink on paper. 120cm x 59cm without frame

\$800-\$1200



044
丁衍庸 (1902-1978) 人物
镜心 设色纸本

Signed and inscribed in Chinese, stamped with the artist's seal, depicting a male and a female figure, ink and colour on paper. 60.5cm x 138cm

\$10,000-\$15,000



045
凌伯元 人物山景画一对
镜心 设色纸本

Depicting human figures and landscape and calligraphy, colour and ink on paper, framed and under glass, signed signed Ling Bo Yuan with two artist's seal mark, signed Qian Shou Zhu (1900-1978) with two artist's deal mark. 33cm x 26cm without frame.

\$500-\$800



046
郑古弥 花卉三件
镜心 设色纸本

A set of three paintings, depicting poney and morning glory and chrysanthemum, one with calligraphy, signed by the artist with four artist's seal mark, ink and colour on paper, framed and under glass. 23.5cm x 21cm each without the frame.

\$500-\$800



047
花鸟扇面连框
设色纸本

Depicting chrysanthemum and bird and calligraphy, signed Shang Jing Zhang with one seal mark of the artist, ink and colour on a fan, framed and under glass.

\$500-\$800



048
花鸟扇面连框
设色纸本

Depicting flowers including pomegranate, cherry blossom, etc. Ink and colour on the fan, framed and under glass, signed by the artist and with one seal of the artist.

\$500-\$800



049
人物与马
镜心 水墨纸本

Depicting two men, four women, a child and a horse, ink on paper, framed and under glass, with one artist's seal. 44cm x 30.5cm without frame

\$500-\$800

050

十八世纪 / 十九世纪 青釉暗刻回形纹大笔海

Of cylindrical form supported on three triangular feet, the exterior deftly incised with Kylin mask heads beneath the key-fret border encircling the rim, covered overall in a green glaze, the base partially unglazed. Diam: 20.5cm H: 15.5cm

\$500-\$800



051

二十世纪 双耳珐琅花瓶一对

The globular body rising from a tapered foot to a cylindrical neck, with an everted rim, accompanied with two lion handles on the neck, decorated with famille-rose landscapes and poney against a blue ground with interlaced flower design, accompanied with two fitted wooden stands. H: 38.5cm without stand each

\$300-\$500



052

紫砂笔筒

Of cylindrical form, the inscribed Zisha brush pot carved with the landscape, pavilion and poem, a three-character seal inscribed on the base. H: 20cm

\$300-\$500



053
黼黻昭文御墨

Of rectangular form with four corners cut-off, one side carved with pavilions, terraces and towers, the reverse side carved with Yu Mo, Fu Fu Zhao Wen, and a four-character square seal. L: 17.5cm W: 8.8cm

\$1500-\$2000

054
白玉挂饰

carved with an eagle grabbing and biting a wrapped snake, overall of creamy white tone. L:6.5cm W:4.5cm

\$1000-\$1500



055
玉盖花梨木盒

Of cylindrical form with seven lobes forming a ruyi shape, the body made with wood, accompanied with a fitted jade cover, the cover carved with a scholar or immortal and an attendant within a landscape. H: 7.8cm W: 13.3cm L:11cm

\$1500-\$2000



056
明 三彩人物像对

A pair of Sancai glazed figure, one female and one male, both dressed in long robes, standing steady with hands overlapped below the chest. H: 36.5cm, 35.5cm

\$600-\$800



057
十九世纪晚期 粉彩男童像对

A pair of export famille rose models of boys, depicting two seated boys, each wearing colourful robes and with a circular aperture on the top, unglazed base reveals the buff-body. H:16.5cm, 17cm

\$200-\$300



058
图诗插屏

The rectangular panel depicting two dragons playing with a pearl against a gold background, background carved with cloud motifs, set within an open wood frame, inscribed on the reverse. H: 47.5cm

\$500-\$800



059
明 三彩陶马一对

Standing foursquare on a rectangular base with the head raised and held slightly to the left, the body with white glaze, one with the green-glazed saddlecloth draped over the high ridge saddle and gathered in pleats to either side, all over a yellow-glazed saddle blanket, the other has opposite combination. H:32cm W:38.5cm

\$1000-\$1500



060

汉 灰陶土茧形大罐

A large cocoon jar, well potted of oval form, rising to an everted rim and supported on a flat foot, with a burnished grey glaze throughout, the body encircled by double concentric grooves. H:38cm W:46.5cm

\$1000-\$1500



061

清 玉石山子

Standing on a narrow foot and expanding towards the top, the perforated stone highlighted with russet streaks, accompanied with a wood stand. H:21.5cm with stand.

\$3000-\$4000



062

金 磁州窑白釉剔荷花纹碗

With deep rounded sides, the interior freely incised through the white slip with a coultal medallion enclosing two large lotus blossoms on a combed ground, the unglazed foot showing the buff ware. Diam:21.3cm

\$1000-\$1500



063

《清香珍玩》款 朱泥壶

Of globular form, the stoneware of a rich red colour, with short tapered mouth and a round knot, the countersunk base impressed with four-character mark within a double square. H: 9.5cm

\$2000-\$3000



064
华日曾 (1878-1964)
扇面 水墨纸本

Depicting landscape of mountains, trees and river, titled and signed by the artist with one artist's seal, framed, ink on fan. 63cm x 35cm with frame.

\$600-\$1000

065
十九世纪 石叟铜鼎式炉

A 19th-century bronze Ding-type censor, the compressed body rising to a pair of upright loop handles, all resting on three short feet, the base inscribed with two-character shisou mark. H: 15cm Diam:16cm

\$800-\$1200



066
十九世纪 缂丝山水 带框

Woven in shades of blue, brown, pinkish red and white with house and figures amidst towering mountains, trees and scholar's stones, painted with details. 89.5cm x 53cm without frame

\$1500-\$2500

067
唐卡

A Tibet Thangka depicting a red face immortal figure, with flaming clouds at the background, sitting above the sea and within the sky. 53cm x 73cm without frame

\$1500-\$2000



068
明 阿米巴佛像

Seated with legs crossed in dhyanasana on a throne, dressed in loose flowing robes, bound at the waist with a red sash, both hands holding a container. 64cm x 156.5cm

\$1000-\$1500

069
黑色大黑天神唐卡

A Thangka depicting Mahakala, against a black background with ritual implements, attendants amongst smoke. 59.5cm x 90cm

\$1000-\$1500





070
十八至十九世纪 黄花梨笔筒

Of cylindrical form, supported on a short foot, the material of the brush pot possibly could be Huanghuali. H: 18cm
 Diam:15.3cm

\$3000-\$5000



071
硬木小柜

A wooden cabinet, of square form, the shallow cabinet comprised of four niches with four opening doors, all carved in low relief decorative carving, on each door panel, all supported on four straight cracked feet. 79cm x 77cm x 23cm

\$800-\$1200



072
人物山水瓷板挂屏

Each plaque inserted with three upright porcelain panels, painted in pastel shades with the landscape, human figures, and calligraphy. 34.5cm x 117cm with frame each

\$2000-\$2500



073
北齐 石雕佛像

Northern Qi Dynasty, carved on the limestone in high relief with figure of a Bodhisattva, the figure wearing a long rope standing on a lotus base with barefoot. H:38cm

\$10,000-\$15,000



074
明 铜佛像

Seated with legs crossed in dhyanasana and both hands holding a vase, dressed in loose robes opening at the chest to reveal beaded jewels, all supported on a lotus flower base. H:27cm

\$3500-\$5000



075
十三世纪 塔拉铜坐像

Seated in lalitasana on a double-lotus base, the face casted with down case eyes, one arm resting on her knees and the other placed at the back. H:21cm

\$3000-\$4000



076
十九世纪早期 鎏金铜西藏达赖喇嘛像

Seated on a lotus seat, wearing voluminous robes and Pandita hat with long lappets, his arms resting on his knees and holding a string of beads. H: 10cm W: 8cm

\$500-\$800



077
十九世纪 一组四件鎏金铜佛像

A group of four different gilt bronze Buddha, one sitting on an elephant, one sitting on a lotus base with leg crossed, the other two sitting in the similar gesture with one leg reach outward, together with a fitted stand. Highest H: 5cm

\$2000-\$2500



078
北周 保定佛像石碑

Both sides carved with Buddha seated in dhyanasana over the pedestal throne on which he sits dressed in heavy robes that fall in voluminous folds, the Buddha on one side accompanied with a pair of bodhisattvas wearing braided belts and low caps, and the other side has monks with bald head, Another side of the stele carve with words, accompanied with a fitted wooden stand. 5.5cm x 10cm x 15cm

\$3000-\$3500



079
17 世纪 鎏金铜多罗菩萨像

A gilt bronze immortal figure with an initiation crown, sitting on a lotus seat, accompanied with a wooden stand. H: 12.5cm

\$4000-\$5000



080

**19 世纪 青玉光素鼻烟壶 津田家族
后镶饰**

A rare and fine 'Emellished' Jade Snuff Bottle, Kyoto, Tsuda School, 1920s, decorated with children playing and scholar's stone, the jade snuff bottle is Chinese 19th century, Provenance: Old Foreset Hill Collection, Toronto. H: 8cm

\$8000-\$10000

081

清 琥珀翡翠朝珠一串

Consisting of a strand of 108 amber beads, divided into groups by the three mottled jadeite beads, the fotou at the back connected to a gourd-shaped fotouta suspending a jadeite beiyun (black cloud) oval plaque and terminating with a tourmaline tear-shaped bead, the three jinian strands of turquoise beads each further suspending a similar tourmaline and jadeite tear-shaped drop. Perimeter: 166cm

\$5000-\$8000





082
掐丝珐琅蝶纹长方盒

Of rectangular form, the exterior decorated with carved lacquer decoration, interior made of wood, divided into two sections. L: 14.5 W:23.5cm H: 8cm

\$1000-\$1500



083
清“赵怀公”寿山冻石仿太湖石印章《丁巳怀公刊石》款 印文:《韵逸》

Of upright rectangular section, carved on Shoushandong Stone mimicking Taihu Stone, side with signature "Ding Si huai Gong Kan Shi", the seal with "Yun Yi", the stone of grey tone with black dots. H: 6.2cm

\$500-\$1000



084
民国“黄土陵 (1849-1908)”刻“丁仲子”属 杜陵石龙纹印章《壬寅元春仲子先生属正士陵作于两峰南岸之梅花楼之中》款 印文:《静悟禅》

The russet stone sensationally worked and polished in the form of a rectangular section, surmounted with two dragons facing towards each other, the side carved with "Ren Yin Yuan Chun Zhong Zi Xian Sheng Shu Zheng Shi Ling Zuo Yu Liang Feng Nan An Zhi Mei Hua Lou Zhi Zhong", the seal face carved with three-character seal. L: 7.5cmW:3cm H:2.8cm Weight:135 grams

\$500-\$1000



085
明 多彩陶制侍者一对

A pair of pottery figure, painted with black and red paint, in the same position with one arm reaching the chest, both wearing similar rope with a tall black hat, standing straight on a flat support, face lively depicted. H:30.5cm

\$400-\$600



086
汉 三彩陶马骑手像

Depicting an equestrian riding on a horse, hands in the position of grabbing a missing rein, the horse standing foursquare with the head raised, the equestrian's clothes and the horse's saddle are decorated with red paint. H:28.5cm W:29cm

\$400-\$600



087
汉 铜制扁壶

A bronze flask of broad oval shape with waisted cylindrical neck and onion-ball mouth and rectangular base, the edges beaded, the short sides with applied Taotie ring handles. H: 29.2cm W:33.6cm

\$6000-\$8000



088
汉 青铜提梁壶

Of cylindrical form, supported on three small feet, accompanied with a cover which chained with the handle, handle connected to the body with motif decorations. H:23.5 cm

\$2000-\$4000



089
汉 鎏金铜头像

A gilt bronze figurehead, with two faces on opposite side, supported on a black stick with a conical gilt bronze base. H:17cm

\$500-\$600



092
唐 花瓣形虎纹蟾蜍钮铜镜

Well cast, of six-lobed form, the gilded central knob enclosed by four lions and interlaced flowers. H:6.5 cm

\$800-\$1200



090
唐 铜制方形鹦鹉配件一对

A pair of bronze fittings, of square form, depicting parrot within interlaced flowers, the oxidized gilt surface reveals the bronze base. H: 5 cm

\$800-\$1200



091
汉 铜制小印章一组四件

Four small bronze miniature seals, of square form, with characters incised, the back of the seals raised to form two turtles, a snake and a handle, all with a hole pierced through it. H:0.5 cm

\$300-\$400



093
宋代 粮罐带盖一对

A Song Dynasty pair of granary jars, of ovoid body supporting on a short compressed circular foot, narrowing to a long tapered neck which decorated with high relief images, rising to a bulb-shape mouth and the domed cover with a bird on the top, the jar overall covered in pale green glaze, the unglazed base reveals the buff body. H:110cm Diam:15.5cm

\$1000-\$1500



094
十八/十九世纪 印度铜制佛像

Depicting a slim dancing figure, with the whole body supported by one foot that connects to the base while the other feet raised off the ground, one hand raising overhead and the other grabbing a shell, carefully carved detail decorations. H:28.5cm

\$300-\$400



095
明 观音铜像

The bodhisattva seated in rajalilasana, the right arm resting on the knee, the left hand holding a small piece of the cloth, wearing a long rope with a robe fitted around the hip and beaded chains dangling below the knee, a tiara set against the high chignon, the face with well defined features. H: 17.5cm

\$3000-\$5000



096
唐 陶制守护神像对

A pair of pottery figures, both wearing similar clothes with the same gesture, depicting with a long rope and big head decoration, standing on a tripod support. H:27cm

\$300-\$400



097
铜和尚

A bronze carved monk, standing on a lotus base, wearing a long robe with a bald head, hands in praying position. H:21.5cm

\$600-\$1000



098
大汶口文化晚期 / 公元 3000 年前
白陶鬶

Possibly late Dawenkou Culture, 3rd Millenium BC., the lower body formed from joining the three legs, each swelling from small pointed foot to a broad rounded section, a simulated rope band around the widest point below the hemispherical upper section, the neck set at one side and joined to the other side by a long loop handle, the lip flared and pinched to form a long upward pointing spout. H:26cm

\$2000-\$4000

099
周 灰陶印花罐

The rounded body impressed with an overall corduroy pattern, beneath the angled shoulder incised with three concentric grooves, a waisted neck flaring to the upper rim, traces of burial dirt, minor chips. H:19cm

\$1000-\$1500





100
十九世纪 出口广州珐琅欧洲款茶壶带盖

The lobed sides painted in famille-rose and iron red enamels with European figures in landscape settings, set between borders of tendrils in black on pale lime-green hands above and below, the colour scheme repeated on the rest of the ewer, cover, spout and slender arched handle, the domed cover with everted rim and a knob finial raised on four bracket supports, some restoration to handle. H:17.5cm

\$300-\$400



101
十九世纪 出口广州珐琅孔雀牡丹盘

Of large shallow rounded form, brightly enamelled to the interior centred with peacock and poney circled by two bands of decorative interlaced floral design, the exterior with yellow ground floral design on the sides and blue beast patterns on a white glaze ground on the base. Diam: 27cm

\$500-\$700



102
十九世纪 漆木雕佛教狮子像一对

Depicting two buddhist lion standing on a rectangular base, the body of the lion carved with decorative patterns, overall of black tone with red lacquer. 18.5cm x 11cm x 17cm

\$300-\$500



103
十七/十八世纪 出口粉彩青花碗一对

A group of two porcelain bowls, the exterior of the larger bowl painted with chrysanthemum, orchid, and hibiscus, the smaller one painted with two poney on the exterior, the interior each decorated with the floral design in the middle and the larger one with orchid and butterfly on the sides. Largest Diam: 15cm

\$300-\$500



104
葫芦形鼻烟壶 《乾隆年制》款

The upper and lower bulb decorated with the double gourds, leaves, and vines, the bottle overall of gold colour, with decoration in yellow, blue, and green, all supported on a short foot, the base with four-character Qian Long seal. H:6cm

\$4000-\$6000



105
十八世纪 窑变釉瓶

Of four-lobed section with everted neck and foot, the body overall covered with a deep reddish-purple glaze with shades of blue and lavender in between the segments, the base glazed in a patchy brown, repaired with Japanese 'Kintsugi'. H:28cm

\$5000-\$8000



106
十九世纪 出口 镜画 '花虫' 灯笼一组

Each of upright square shape, the wooden frame folding around a central X-form hinged pivot, the four sides each enclosing a colourful reverse painted the domestic scene of flowers and insects, including poney, lotus, chrysanthemum, butterfly, and dragonfly. 18.7cm x 18.7cm x 28cm

\$800-\$1200



107
十九世纪 出口 黑漆彩绘人物庭院图折扇

The guards and sticks decorated with lacquer black ground in a garden, the fan leaf brightly painted on both sides with figures in interior an garden setting, each figure with finely detailed pink faces and clothing. L:28cm

\$250-\$350



108
项链一组两串

A group of two necklaces comprising of a purple transparent beads necklace with decoration on one side, and a necklace with light blue, dark blue, red, and gold beads.

\$200-\$300



109
玉挂坠一串

Jade knobs and beads connected by rope, the middle extend to a Chinese knot shape pendant connected to a jade carved with ruyi form clouds.

\$200-\$300



110
二十世纪 圆形花梨支架

of cylindrical form, the top circular panel carved with circles mimicking flower, the stand supported by five legs. Largest Diam: 14cm H:16cm

\$200-\$300



111
十九 / 二十世纪 方形硬木支架一组四个

A set of four wooden stands, all of the square form, made with hardwood, except one with a white stone in the middle, with varied sizes. Highest H:17.7cm

\$300-\$400



112
六抽硬木小柜

Of rectangular form with a short frame on the top, the front with six drawers, two sides applied with handles. 45cm x 20cm x 18cm

\$500-\$1000



113
黄地粉彩花盆 《大清洪宪年制》款

A famille rose porcelain planter, painted with the floral design on two panels, the base with two circular apertures and four-character Hongxian mark in iron red and of the period, H: 16.5cm Diam:18cm

\$600-\$800



114
二十世纪早期 粉彩六角形花盆

Of flaring hexagonal form, decorated with chrysanthemum, plum blossom and butterfly design, all supported on four bracket feet. 28cm x 21.5cm x 20cm

\$300-\$400



115
二十世纪 均窑六角形花盆一对

The deep, faceted sides of the oblong, hexagonal planter are raised on six slightly curved, low supports, and flare upwards to a thicker rim, it is covered in interior with thick bubble-suffused glaze of milky-blue tone thicker to purple tone on the exterior, the base which is unglazed, reveals the buff ware and pierced with five drainage holes. 14.5cm x 21.5cm x 13.6cm

\$300-\$400



116
十七世纪 窑变釉笔筒带底座

Of cylindrical form, the body covered overall with a rich purplish-red glaze streaked with lavender blue, the glaze falling short to a buff-tone in the interior, the unglazed bottom reveals the buff-body, accompanied with a fitted wooden stand. H: 11cm Diam: 7.5cm

\$1000-\$1500



117
二十世纪 磁州窑暗刻 '牡丹' '梅瓶'

The elongated body is fluidly painted in brown on a white slip and under a clear glaze with a board band between two thinner bands of poney, the unglazed base reveals the buff ware. H:36cm

\$300-\$400



118
光绪 暗刻银碗

Incised with "longevity" character, bird and peony on the exterior, the bowl of circular form, supported on a short foot. Diam:10.7cm H:5cm

\$300-\$400

119
十八/十九世纪 银衬里 '长寿' 椰子杯

A group of three coconut wine cups, the deer Cup of 18th Century and the pair of Shou Cups of 19th Century. Largest Cup Diam:8.5cm H:5cm

\$300-\$400



120
青花宫碗 《大清宣统年制》款

A blue and white 'palace' bowl painted with a frieze of lotus meander above a petal lappet band on the exterior and with a similar single lotus roundel in the interior, the base with six-character Xuantong seal. Diam: 16.3cm

\$1000-\$1500





121
粉彩荔枝盘 《大清嘉庆年制》款

Of round shallow sides, the interior painted with two detached branches of lychee and flowers, the exterior painted with similar design with a butterfly, the base with six-character Jiaqing seal. Diam:14.5cm

\$3000-\$5000



122
青花斗彩 '缠花纹' 盘一对 《大清宣统年制》款

Each with shallow sides and inverted rim, the interior painted with a central medallion of interlaced flower, surrounded by similar patterns, all against a white ground, the unglazed foot rim reveals the buff body, the base with six-character Guangxu seal. Diam: 16.5cm

\$1000-\$1500



123
民国 粉彩动植物碗 《大清光绪年制》款

The Republic period bowl with deep rounded sides rising from a short foot to an everted rim, delicately painted to the exterior with flowers, trees, scholar's rock, birds, and butterfly, the interior decorated with a dragon chasing pear in the middle, the base with six-character Guangxu seal in the middle. Diam: 12.2cm

\$200-\$300



124
青花矾红 '蝠纹' 盘 《大清光绪年制款》

A blue, white and copper red porcelain dish, painted in delicate shades of iron-red depicting auspicious bats amidst cobalt blue clouds, the base with six-character Guangxu seal mark in blue. Diam: 19cm

\$600-\$800

125

蓝釉盘《大清光绪年制》款

The shallow rounded sides rising from a short foot, the exterior and interior decorated with blue glaze, the central base glazed white, with six-character Guangxu seal mark in the middle. Diam:17cm

\$800-\$1200



126

红釉盘《大清嘉庆年制》款

The rounded sides rising from a short foot, covered inside and out with bubble-suffused glaze of even vibrant cherry-red tone below the white rim, the base covered with a transparent glaze with six-character Jiaqing seal mark. Diam:15cm

\$1000-\$1500

127

胭脂釉圆碟《居仁堂制》款

The rounded sides rising from a short foot to a slightly flared rim, covered inside and out with pink glaze, the base covered with a white glaze and with a four-character Juren Tang seal mark. Diam:14cm

\$400-\$600





128
清 百宝嵌挂屏

Embellished with the motif of 'The Hundred Antiques', including panels, and various vessels filled with flowering branches, all applied with various hardstones, jade and bones. W:85cm H: 64cm

\$3000-\$4000



129
青花人物碗

The deep rounded sides rising from a short straight foot, painted around the exterior with the depiction of human figures, four-character 'Fang Gu Zhen Cang' seal mark on the bottom. Diam:12.5cm H:6.5cm

\$300-\$500



130
翡翠挂件三个

A group of three jadeite pendants, all with karat gold hanger and two with diamond decorations, comprising a leaf shape pendant carved with a ladybug of the green tone, a pendant with monkey and bat of white and green tone, a Guanyin pendant of translucent colour. H:4.5cm , 3.8cm , 4.7cm

\$600-\$800



131
通草画一对

A pair of pith paper painting, painted with a couple, both accompanied with a same gender attendant and half of the same table and floor. 20cm x 31.5cm each

\$500-\$800



132

132
梅兰芳, 侯宝林合作 花鸟挂轴

Depicting a bird standing on the branches of the flower, titled and signed by the two artists, with two artist's seal. Hanging Roll. 92cm x 31.5cm

\$2000-\$3000



133

133
单伯钦 (1936-) 古典仕女
镜心 设色纸本

Signed and inscribed in Chinese, stamped with two artist's seals, depicting a lady within bamboo leaves, ink and colour on paper. 68.5cm x 137cm

\$1500-\$2500



134
十竹斋笺谱

Beijing 1952 Rong Bao Zhai Woodblock Printing Album, with silk case, titled and signed by Fei An, with one artist's seal mark. 31.5cm x 22.5cm x 5.5cm

\$800-\$1000



135
四张册页山水画 设色纸本

A group of four landscape paintings, depicting mountain, lake, pavilion and figures, same artist's seal on each painting, colour and ink on paper. 21.3cm x 30.2cm

\$400-\$600



136
柳编纹紫砂壶

Of double gourd section supported on a short foot, carved with wicker pattern, handle, knot and spout carved with bamboo shape, two seal mark on the cover and the base with a four-character mark. H:14cm

\$500-\$800



137
黄地三角水盂套组 《大清同治年制》款

A set of two porcelain triangular waterpots, accompanied with a wooden frame, the waterpots fit perfectly into the wooden frame, both waterpots decorated with yellow ground interlaced flowers design on the exterior, and blue glaze in the interior. 23cm x 23cm x 9.3cm

\$300-\$500



138
景泰蓝圆盒一组两件

A group of two round boxes, the bigger one decorated with human figures within an outdoor scene on the sides against the blue background decorated with interlaced plum blossom and 'shou' character, the cover decorated with similar images, the smaller one decorated with figure images on the cover and interlaced poney on the side. Diam:15cm; 6.2cm H:8cm; 4cm

\$400-\$600



139
黄地紫绿彩云龙争珠盘 《大清康熙年制》款

With shallow rounded sides rising from a short foot, the interior decorated with two dragons soaring around a 'flaming pearl' amidst flaming wisps and ruyi clouds. Rendered in green and aubergine enamels against a yellow ground, the base inscribed with a six-character mark within a double circle. Diam: 14cm

\$800-\$1200



140
汉 绿釉罐一对

Each boldly-potted jar moulded around the body with paralleled lines, the waisted neck rising to a wide everted rim with glaze drips, supported on the flat glazed base, the interior with an amber glaze, the exterior in a deep olive-green glaze almost entirely turned to a pale green iridescent surface. H:19.5cm

\$600-\$800



141
唐 橘釉罐带盖

Of ovoid form potted with a short neck and lipped rim, and covered overall with an orange glaze that falls short of the base to expose the buff ware, the similarly glazed, domed cover with everted rim is surmounted by a bud-form finial. H:22cm

\$1000-\$1500

142
宋至元 河南黑釉罐

The compressed globular body tapered to a short foot, two handles attached on the shoulder rising to a short cylindrical neck and everted rim, the upper body covered with the rich black glaze which stops in the middle. Diam:22cm

\$1000-\$1500





143
宋晚期至元 龙泉窑绿釉笔洗

Of late Song to Yuan Dynasty the brush washer finely potted of compressed globular form on a low foot ring, covered both inside and out with green glaze, with the rim and foot unglazed and shows the buff ware. Diam:9.5cm

\$1000-\$1500



144
十一至十三世纪 白釉暗刻花纹碗

Of 11th to 13th century, the finely potted conical body slightly flared at the rim with six notches supported on a low cylindrical foot, the inside confidently carved with flowering leafy lotus stems, the translucent, very pale greenish-blue glaze extending over the foot and stopping short of the otherwise unglazed base. Diam:15cm

\$400-\$600



145
清 青花龙纹香炉

The compressed globular body rising to a waisted neck and an everted rim, all supported on three tapered feet, the exterior decorated with two dragons playing with a pearl amidst flames. H:10cm Diam:13.2cm

\$300-\$500



146
清 青花水盂

Of beehive form, the domed sides decorated with landscape scene, including three figures, a house, river and tress, with Jian Ding seal mark on the base, accompanied with a fitted stand. Diam: 5.5cm H:3.3cm

\$300-\$500



147
十九/二十世纪 圆形硬木支架
一组五个

A set of five round wooden stand, with different sizes and design. Largest Diam: 24.5cm

\$300-\$400



148
二十世纪 染色仿树根支架

Of upright cylindrical form, carved shape mimicking wood root, stained yellow. H:13cm

\$300-\$400



149
二十世纪 窑变釉圆形罐

Of globular form, rising to a short cylindrical neck and everted rim, four loop handles attached to the shoulder, the exterior decorated with pinkish red changing to pale green tone. H:22.5cm

\$200-\$300



150
清 藏教银铃挂饰

An antique necklace, with a silver bell, pendant and turquoise beads also with other hardstones, decorated with fish shape hardstones, and bone decorations.

\$1000-\$1500



151
清 观音立像

The figure is shown standing on a lotus base with her head turned to one side, offering a serene expression, the long, flowing robes are pulled tightly around the body and draped over her head in a cowl, both hands are held in front of the body and one hidden under voluminous robes with pendant jewellery and bare feet exposed, a six-character seal is shown in low relief inside the figure. H:51cm

\$1000-\$1500



152
粉彩 '八吉祥' 纹盘一对 《大清光绪年制》款

Each dish is decorated to the interior with a central roundel enclosing elaborate lime-green enamelled lotus scrolls, all encircled by the Eight Buddhist Emblems, Bajixiang, the interior is enamelled with three floral sprays, the base with Guangxu six-character seal in iron red and of the period. Diam: 14.6cm

\$1000-\$1500



153
青花宫碗 《大清咸丰年制》款

A blue and white 'palace' bowl painted with a frieze of lotus meander above a petal lappet band on the exterior and with a similar single lotus roundel in the interior, the base with six-character Xianfeng seal. Diam: 16.5cm

\$1000-\$1500

154
劳力士蚝式恒动日志型女士腕表

The champagne-colour dial applied with Roman numerals with jubilee bracelet with five piece link metal, the cyclops lens enhances the date aperture. Band #468B. Diam: 26mm, Bracelet Circumference:190mm

\$2500-\$3500



155
劳力士蚝式恒动日志型腕表

The blue dial applied with Roman numerals, with jubilee bracelet with five piece link metal, the cyclops lens enhances the date aperture. Band #555B. Diam: 36mm, Bracelet Circumference:210mm

\$2500-\$3500



155A
萧邦钻石女表

A yellow gold lady's watch from Chopard, accompanied with a Sales Memo. And a Certificate of Original and Guarantee. D:2.3cm

\$3000-\$5000



155B
萧邦怀表

A yellow gold pocket watch with a leather cover, accompanied with a Sales Memo, and a Certificate of Original and Guarantee. D:2.8cm

\$3000-\$5000

155C
卡地亚情侣表一对

A pair of Cartier watch, comprising Panthere de Cartier and Cougar de Cartier, each accompanied with an original International Limited Guarantee Certificate. D: 2.9cm; 3.6cm

\$5000-\$8000



156
宝石胸针 两件

A set of brooch with one flower shape and one brach shape, one brooch with a gem stone missing. W: 5.5cm & 4.5cm

\$300-\$500



157
戒指 两件

A set of two rings, inlayed with different gems.

\$300-\$500



158
玉佩件 两件

A set of two jade pendant, the smaller one with a flower in the middle, the big one with 'fu' character in the middle. Diam: 1.2cm & 3.3cm

\$500-\$600



159
龙型玉挂坠

Of brown tone, carved with a dragon grabbing a ball, with a copper coin in the middle. L: 4.5cm W:2.5cm

\$300-\$500



160
青金石赏石

A scholar rock, in form of a folded mountain with blue kyanite stone in the front, accompanied with a fitted wooden stand, H: 14cm Weight: 1181 grams with stand

\$300-\$500



161
黑釉双系罐

The gently rounded sides swelling to a short neck and tapering to a short tapered foot, the body covered with black glaze and applying a pair of small handles, one with a chip on the top. H: 12cm

\$500-\$800



162
铜胎掐丝珐琅龙纹圆盖盒

The rounded sides rising from a straight foot to a circular cover, the upper face with a dragon grasping for flaming pearl, set within a double band, above a band of interlaced flower, the exterior base decorated with two dragons playing with a pearl. H: 7cm

\$500-\$800



163
唐 橘釉陶制侍俑

Well-modeled, standing attentively, hands clasped in front of the chest, wearing a long rope with a tall hat. H:24.5cm

\$150-\$250

164
汉 陶马

Modelled in the round, the naturally rendered body mounted with a well-modelled head, with open mouth baring its teeth. W:47cm H:32cm

\$1000-\$1500



165
宋 灰陶土侍从像一组三件

A set of three pottery figure, with unproportioned big head, face detail lively carved, all wearing similar long rope, with hands crossing in front of their chests. H: 26.5cm

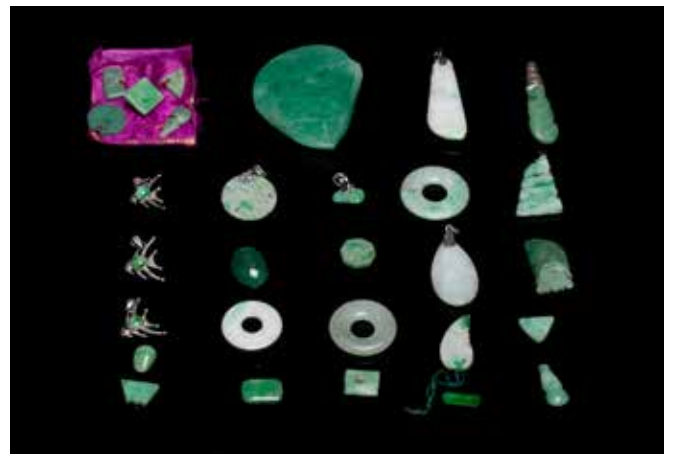
\$400-\$600

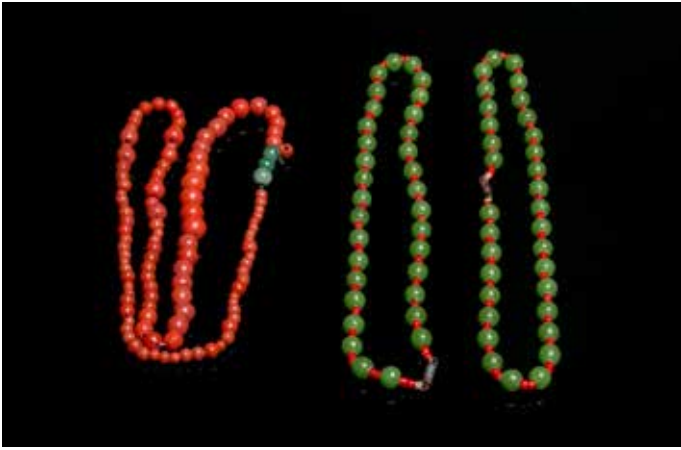


166
翡翠饰件一组

A group of Emerald pieces and pendants, total of 25 pieces.

\$300-\$500





167
料器挂链一组三条

A set of three glassware chains, two of green balls with same length, and the longer one of red balls. Perimeter: 41cm, 41cm, 62cm

\$300-\$500



168
紫晶兔带底座

Lively carved in the shape of a rabbit, with red eyes of other hardstone, the fur has been carved vividly, accompanied with a fitted wooden stand. H:5cm W:10cm without stand.

\$200-\$300



169
汉 绿松石嵌铜扁壶

Han Dynasty, of flattened oval form, supported on a spreading rectangular foot, the body inlaid with turquoise for decoration, the waisted cylindrical neck raising to an onion-ball mouth. H:22.5cm

\$6000-\$8000



170
西周 青铜公羊面具

Each with curled horns and forehead with raised flange, eyes on either side, incised with stylized scroll motifs, green malachite encrustation overall and traces of azurite. H: 6.5 cm

\$1000-\$1500



171
青铜带钩一组两件

The slender rounded shaft one with no decoration and one decorated with geometric motifs, all below a tapering hook, the reverse with a flat knob for attachment. L:15.2cm; 20.5cm

\$500-\$800



172
汉 青铜三足提梁壶

Of compressed globular body rising to a cylindrical neck and upright rim, all supported by three slim legs, two loop handles at the side suspending loose rings attached to the double-chain connected to a handle with a mythical animal head at the end, the domed cover cast with a ring knob at the top. H:17.5cm

\$2000-\$4000



173
汉 青铜点纹豆

The deep rounded body supported by a stem and flared foot, carved with dragons, flanked by two loop handles on the sides, the cover centre with a flaring knob. H: 24.5cm

\$2000-\$4000



174
黄铜兽面纹觚

Of slender form rising from a spreading hollow base to a trumpet mouth, the neck cast with four tapering thunder patterns rising above four confronted Kui dragons, the central bulb and foot crisply cast with taotie masks set with raised eyes and brows divided by notched flanges. H: 28.8cm

\$2000-\$3000



175
北宋至金 磁州窑瓷枕

Of rectangular form, with a flattened top, curved inward in the middle, two sides decorated with orchid, overall covered with white glaze and small cracks. L:33 cm

\$1500-\$2500



176
金 磁州窑牡丹枕

The body sculpted with an inward-tilting concave top carved with a large standing peony within a double line-border, the front and back panels of the sides moulded with a diaper ground, covered overall with an ivory tinted glaze, the base unglazed, one hair-line crack on top, some restoration on the rim. L:25 cm

\$1000-\$1500



177
元 / 明 均瑶系天蓝釉紫斑碗

The deep sides rising from a short foot to an upright rim, covered overall with a sky-blue glaze punctuated with pale purple splashes to the interior, the glaze falling short of the foot to reveal the buff ware. Diam: 19 cm

\$1000-\$1500



178
金 磁州窑白釉剔荷花纹碗

Of rounded shape on a straight foot rim of broad section applied with an almost colourless glaze over a creamy slip, the interior freely incised with a large stylised lotus on a combed ground. Diam: 21.5 cm

\$1000-\$1500



179
宋 白釉执壶

A white-glazed Ovid form ewer with simple waisted neck applied with a double loop handle, and a narrow cylindrical spout, incised with concentric horizontal rings at the shoulder, the ivory glaze stopping irregularly above the shallowly cut base. H:13.5 cm

\$800-\$1200



180
青花宫碗 《大清光绪年制》款

A blue and white 'palace' bowl painted with a frieze of lotus meander above a petal lappet band on the exterior and with a similar single lotus roundel in the interior, the base with six-character Guangxu seal. Diam: 16.1cm

\$1000-\$1500



181
均窑天蓝釉三足炉

Of compressed globular body rising from three short conical legs to a broad tapering neck with everted rim, covered overall with blue glaze falling short to a buff-tone of the base of the legs to reveal the body. H:7.5cm

\$500-\$800



182
瓷板屏一对

Each of rectangular form, writing in ink with one artist's seal on each panel. 16.5cm x 26cm

\$400-\$600



183
清 藏教青白玉银铃挂饰

An antique necklace, decorated with jade carved fishes decoration facing each other, along with jade beads and other hard stone beads.

\$1000-\$1500



184
清 料器烟嘴

The Cigarette-holder carved from a smoothly polished Peiking Glass material of an even white colour. L:6.7cm

\$200-\$300



185
清 白玉葫芦挂坠

The pendant carved in the form of a large double gourd borne on stems suspending a smaller double gourd, the stone of pale celadon tone with russet marks. L:6cm W:3.2cm

\$300-\$500



186
清 白玉 '蝙蝠寿桃' 挂饰带架

Carved with a bat resting on two peaches, the stone of white tone, hanging on a wooden hanger which carved with a dragon head. Jade H: 8cm

\$300-\$500



187
翡翠巧雕笔洗带底座

Carved with a bat resting on two peaches, the stone of white tone, hanging on a wooden hanger which carved with a dragon head. Jade H: 8cm W:11cm

\$200-\$300



188
沈仲强 (1893-1974) 菊花
镜心 设色纸本

Depicting chrysanthemum with branches and leaves, titled and signed Shen Zhongqiang, with three artist's seal mark, ink and colour on paper, accompanied with original Suanzhi frame. 33cm x 103cm without frame

\$1500-\$2000



189
赵少昂 (1905-1998) 牡丹
镜心 设色纸本

Signed and inscribed, stamped with three artist's seals, depicting poney and two birds, ink and colour on paper, accompanied with original frame, from recipient. 96.5cm x 47cm

\$30,000-\$40,000



190
邓石如款 八条屏
立轴 水墨纸本

Total of 8 scrolls, ink on paper, signed with one artist's seal. 41.5cm x 123cm each

\$6000-\$10,000



191
于右任 (1879-1964)
镜心 设色纸本

A framed calligraphy, with artist's photo, titled and signed with two artist's seal. H:65.5 W:29cm with frame.



192
斗彩荷花池碗 《大清光绪年制》款

The exterior decorated with lotus pond design with lotus leaf, lotus blossom, lotus root, and the pond, with the similarly designed roundel in the interior, the base with six-character Guangxu seal in the middle. Diam: 14.1cm

\$1000-\$1500



193
粉彩锦葵纹碗 《大清嘉庆年制》款

The deep rounded sides rising to a lobed rim, the exterior decorated with repeated flower and Ganoderma design, the base with six characters Jiaqing seal mark. 13.5cm

\$200-\$350

194
十八世纪 / 十九世纪 青釉暗刻笔筒

Of cylindrical form supported on circular feet, the exterior incised with bold stylized foliage and vines, the underglazed base reveals the buff body. H: 15.5cm Diam: 20.5cm

\$500-\$800



195
晚清 粉彩人物碟

The rounded sides rising from a flat foot to an everted rim, brightly enamelled to the interior with a scene depicting a female with nine children playing in a yard, the rim with depictions of chrysanthemum, lotus and plum blossom, the exterior decorated with three red bats. Diam: 20.5cm

\$500-\$800



196
哥窑水盂

Of compressed globular body rising to an inverted mouth rim, body applied overall with a thick pale greyish celadon glaze suffused with dark brown crackle. H:9cm Diam:23cm

\$800-\$1000





197
青釉琮式瓶

Modeled after an archaic jade cong, each long edge of the square-sectioned body with eight raised horizontal bands within a raised rectangular frame, all supported on a short foot and surmounted by a gently tapered neck, covered overall save for the footring with a lustrous celadon glaze. H: 22.2cm

\$500-\$800



198
十九世纪 剔红雕漆人物山水纹长方盖盒

Of rectangular form, the flat cover deeply and crisply carved with a scholar strolling with his attendant carrying a bag on a stick, within a landscape of mountains and trees, the sides of the cover and the base carved with Greek key motif, the interior and base lacquered black. L:9.5cm W:14.3cm H:4.5cm

\$500-\$800



199
粉彩「七政宝」纹杯一对

Each of deep 'U' - shape, supported on a short foot, decorated around the exterior with a parade of auspicious animals and deities of the Qi zheng bao ("Seven Treasures"), each set on a lotus flower within a mandorla above the sea, below alternating gold animal masks suspending tassels and between bands of the Bajixiang ("Eight Buddhist Emblems") in iron-red divided by Shou characters at the foot and rim, the interior with a lotus medallion centred with a vajra motif, the white base inscribed with an iron-red 'Baragon Tumed' mark in Mongolian script. H: 6.7cm each

\$3000-\$5000



200
宋 暗刻纹青花碗

Of conical form, the wide flattering sides supported on a short straight foot, interior deftly carved with branches pattern, covered overall in a pale celadon glaze save for the underglazed base revealing the buff-coloured body. Diam: 18.5cm

\$500-\$800



201
出口 青花葫芦瓶 《大清康熙年制》款

The blue and white porcelain vase of triple-gourd form rising to a long waisted neck, the body decorated with interlaced flowers, the base with a six-character seal mark. H: 19.5cm

\$1000-\$1500



202
德化白瓷花觚 带座

Of Gu form, rising from a splayed foot to a flaring mouth, applied overall with an even white glaze, accompanied with a fitted wooden stand. H: 15.2cm

\$2000-\$2500



203
民国 灰色山水大碗 《洪宪年制》款

The Republic period bowl of deep side with an everted rim, the bowl decorated on the exterior with grisaille landscape design, including mountains, trees, lake and pavilion, the base with four-character Hongxian seal mark. Diam: 16.6cm

\$300-\$500



204
北宋 青白釉印花盒

Song Dynasyu, each of circular section, the cover moulded with double phoenix, the shallow side partly glazed, flaring from the slightly concave and unglazed base burn cream in the firing, covered inside and out with a light-blue colour, minor chips. Diam: 9.5cm

\$600-\$800



205
宋 黑釉茶盏

Of conical form, rising from a small foot to a flared rim, body with a rich black glaze, with traces of brown splashes, the unglazed base reveals the buff ware. D: 17 cm

\$1000-\$1500



206
北宋至金 河南窑黑釉酱斑碗

The interiors splashed in reddish brown with three irregular poutine spots, all on a lustrous black ground below a line of iron-rust at the upcurved rim and repeated on the exterior where it pools in a line atop a thin iron rust which falls halfway of the knife-cut foot to expose the buff ware; The other with deep rounded sides rising from a straight foot to a slightly incurved lipped rim, applied with a black glaze with five splashes radiating from the center of the interior, the glaze to the exterior stopping irregularly above the foot to reveal the buff body. Diam: 20 & 17 cm

\$800-\$1200



207
元至明 磁州窑花卉纹罐

Of tapered globular form, supporting on a short foot, the exterior decorated with black and orange painted twig on a pale russet glazed body, interior glazed black, the unglazed base reveals the buff body. H:13 cm

\$400-\$600



208
西晋 越窑橄榄釉 '南瓜' 盒带盖

Of circular section, the cover moulded with a pumpkin shape, the body glazed with an olive colour, the body decorated with small cracks. D 10 cm

\$500-\$700



209
北宋至金 河南窑棕釉罐

The well potted globular body decorated on the exterior with thick black glaze with brown coloured striped, stopping short in drips over the unglazed buff, the interior with the black glaze with the mouth unglazed. H: 10 & 11.5 cm

\$600-\$800



210
晋 越窑青釉鸡圈

An olive glazed porcelain ware, depicting a chicken house with three chickens either sit on the house or moving out of the house. L:13.5 cm

\$600-\$800



211
粉彩无双谱盘一对 《大清道光年制》款

Each painted to the interior with four heroes from the Qing Dynasty woodblock prints Wushuangpu [Table of Peerless Heroes], the centre depicting a female figure, the base with a six-character Daoguang seal mark. Diam:22cm; 25cm

\$800-\$1200



212
金 / 元 磁州暗刻大罐

The vase is decorated with four ribbed leaf-shaped handles to the neck, the upper body is covered with a cream slip with double band in brown glaze and with stylised character decorated the body. H:28cm

\$1000-\$1500



213
明 / 清 三彩釉人物瓷砖

The tile modelled with a figure hanging on a branch, decorated in shades of yellow and green. L:28.5cm

\$400-\$600



214
十九世纪 镶玉剔红盒

Of rectangular form, the flat upper surface carved with the interlaced floral pattern with jade decoration inlaid in the middle, the straight sides deftly carved with key patterns, the box similarly carved, the interior and base lacquered black. 10cm x 14.5cm x 5cm

\$300-\$500



215
十八九世纪 出口瓷器一组

A set of five porcelain ware, comprising two plates, three teacups and one tea bowl with cover, the cups, bowl, cover are decorated with figures within the interior scene, one plate painted with the figure within a garden scene and one with depictions of different objects. Plate Diam: 12.5cm

\$200-\$300



216
日本明治末期 青铜盘口瓶

Of usabata-style with tall straight neck and wide lip encircling the mouth, the vase includes two parts, the lower vase of the globular body rising to a cylindrical neck and an everted rim, accompanied with two handles attached on the shoulder and all supported by three legs, the body carved with landscape and birds. H:28.5cm D:30cm

\$300-\$400



217

十九 / 二十世纪 牡丹木制围棋容器

A pair of wooden Weiqi container comes with Weiqi pieces, the containers of globular form with a cover, the body decorated with painted poney, the Weiqi pieces including two different colours, one is transparent and the other one with a darker tone. H:12.5cm
Diam:11.5cm each

\$300-\$400

218

红木小花几

With circular top, supported on four elegantly curved cabriole legs connecting with a circular stretcher. H:58.5cm

\$300-\$500



219

长形老地毯

Of long rectangular form, the carpet decorated with floral design with five sections, overall of a red tone. 62cm x 305cm

\$400-\$600



220
吉祥图案老地毯

Of rectangular form, the carpet decorated with auspicious motifs. 170cm x 270cm

\$500-\$800

221
景泰蓝花盆玉盆景

Peony made of jade with different colours, the leaf also vividly depicted with jade, all set within a tapered-square planter, which decorated with landscape scene and crane. H:50.5cm W:26cm

\$500-\$600



222
青白玉项链一串

Comprising slightly graduated vivid emerald green jadeite beads of exceptionally glassy material. Perimeter:96cm

\$200-\$300



223
秘鲁精雕葫芦

The double gourd carved with an extremely detailed depiction of a Peru city, including animals, architectures, scene of the market, etc., the bottom incised with artists' name. H:21.5cm

\$300-\$500



224
晚清 粉彩笔筒青花矾红水洗

The brush pot of cylindrical form, decorated with poney, scholar's rock, butterfly and branches, the base with a four-character seal; The brush-washer of circular form, painted with blue and white and iron red two dragons chasing flaming pearls surrounded by scrolling clouds. H:6cm, 12cm
Diam:8cm, 8cm

\$300-\$500

225
金木雕

Carved in relief depicting figures dressed in ancient costume, fighting among buildings, the back with lacquered to red. 38.5cm x 61cm x 6cm

\$300-\$500



TERMS & CONDITIONS

STUNNING ARTS GALLERY AND AUCTION INC AS AGENT

The lots listed in this catalog will be offered by Stunning Arts Gallery and Auction Inc as owner or as agent for consignor(s) subject to the following terms and conditions. By bidding at auction you agree to be bound by these Conditions of Sale.

BEFORE THE AUCTION

Prospective buyers are strongly advised to personally examine any property in which they are interested before the auction takes place. All lots are sold "AS IS" and without recourse and neither Stunning Arts Gallery and Auction Inc nor its consignor(s) makes any warranties or representations, express or implied with respect to such lots. No statement, whether written or oral, and whether made in catalog, or in supplements to the catalog, an advertisement, a bill of sale, a saleroom posting or announcement, the remarks of an auctioneer, or otherwise, shall be deemed to create any warranty, representation or assumption of liability. It is the responsibility of prospective purchasers to inspect or have inspected each lot upon which they wish to bid, relying upon their own advisers, and to bid accordingly.

BIDDING IN THE SALE

Refusal of Admission Stunning Arts Gallery and Auction Inc has the right, at our complete discretion, to refuse admission to the premises or participation in any auction and to reject any bid.

Registration before Bidding

A prospective buyer must complete and sign a registration form and provide identification before bidding. We require bank or other financial references.

Bidding as Principal

To bid in person, the bidder will need to register for and collect a numbered paddle before the auction begins. Proof of identity will be required. Should you be the successful buyer of a lot, please ensure that your paddle can be seen by the auctioneer and that it is your number that is called out. All lots sold will be invoiced to the name and address in which the paddle has been registered and cannot be transferred to other names and addresses. When making a bid, a bidder is accepting personal liability to pay the purchase price, including the buyer's premium, all applicable taxes and all other applicable charges.

Absentee Bids

If the bidder cannot attend the auction, we will be happy to execute written bids on your behalf. Absentee bids in writing must be submitted to Stunning Arts Gallery and Auction Inc at least 24 hours prior to the sale by letter or fax. In the event of identical bids, the earliest received will take precedence.

Reserves

Each lot may be subject to an unpublished reserve which may be changed at any time by agreement between the auctioneer and the consignor.

Auctioneer's Discretion

The auctioneer has the right at his or her absolute and sole discretion to refuse any bid, to advance the bidding in such a manner as he or she may decide, to withdraw any lot, and in the case of error or dispute, and whether during or after the sale, to determine the successful bidder, to continue the bidding, to cancel the sale or to re-offer and resell the item in dispute. If any dispute arises after the sale, our sale record is conclusive.

Successful Bid

The highest bidder acknowledged by the auctioneer will be the purchaser. In the case of a tie bid, the winning bidder will be determined by the auctioneer at his or her sole discretion. In the event of a dispute between bidders, the auctioneer has final discretion to determine the successful bidder or to re-offer the lot in dispute.

AFTER THE SALE

Buyer's Premium

In addition to the hammer price, the buyer agrees to pay Stunning

Arts Gallery and Auction Inc a buyer's premium and the applicable sales tax added to the final total. Each lot sold is subject to a premium of 20% of the successful bid price of each lot up to and including \$50,000 and 18% on any amount in excess of \$50,000 as part of the purchase price. Online bidding is subject to a 23% buyers premium.

Deposit

The contact information provided by the purchase must be accurate and true. The auctioneer reserves the right to request a deposit to be provided before bidding and will be used against any and all purchases made at the auction.

Taxes

Unless exempted by law, the buyer is required to pay HST on the total purchase price including buyer's premium. For international buyers, taxes are not applicable when purchases are shipped out of country. Items shipped out of Ontario, the buyer is required to pay taxes as per the tax status of that province, whether is HST or GST.

Payment

Immediately after the purchase of a lot, the buyer shall pay or undertake to the satisfaction of the auctioneer with respect to payment of the whole or any part of the purchase price requested by the auctioneer, failing which the auctioneer in his sole discretion may cancel the sale, with or without re-offering the item for sale.

The buyer shall pay for all lots within 7 business days from the date of the sale, after which a late charge of 2% per month on the total invoice may be incurred or the auctioneer, in his sole discretion, may cancel the sale. The buyer shall not become the owner of the lot until paid for in full. Items must be removed within 10 days from the date of sale, after which storage charges may be incurred.

Each lot purchased, unless the sale is cancelled as above, shall be held by the auctioneer at his premises or at a public warehouse at the sole risk of the buyer until fully paid for and take away.

Payment for purchases must be by cash, INTERAC direct debit (Canadian clients in person only), certified cheque (U.S. and Overseas not applicable), bank draft, electronic transfer (fee applies), and VISA or MASTER or AMERICAN EXPRESS card.

Should the item not be paid for within the time limit stated, the auctioneer, without limitation of the rights of the consignor and the auctioneer against the buyer, may resell any of the articles affected.

SHIPPING

Shipping is provided at the buyers' expense. Stunning Arts Gallery will provide a list of shippers. The purchased items will be released with the buyers' written consent and until payment has been made in full. Shipping, packing and handling is at the entire risk of the buyer. SAG will have no liability of any loss or damage to such items.



STUNNING ARTS GALLERY & AUCTION

竞价出价表 ABSENTEE/TELEPHONE BIDDING FORM

表格应以墨水笔填写，并电邮、邮寄或传真至本公司

FORMS SHOULD BE COMPLETED IN INK AND EMAILED, MAILED, OR FAXED TO THE AUCTION HOUSE

Name: 名字:				Telephone <input type="checkbox"/>	Absentee <input type="checkbox"/>
Phone: 联系电话:			Email: 电子邮件:		
Address: 地址:					
City: 城市:			Province: 省:	Postal Code: 邮编:	
Credit Card Number: 信用卡号码:				Expiry Date: 到期日期:	
Name on Card: 持卡人姓名:				CVV: 卡后三位安全码:	
Billing Address (if different): 账单邮寄地址:					

IMPORTANT 重要事项

Please note that the execution of written and telephone bids is offered as an additional service for no extra charge, and at the bidder's risk. It is undertaken subject to Stunning Arts' other commitments at the time of auction, Stunning Arts, therefore cannot accept liability for failure to place such bids, whether through negligence or otherwise. 请注意书面及电话竞拍是免费提供之附加服务，风险由竞投人承担，而该等服务会在本公司于拍卖时其他承诺之限下进行；因此，无论是由于疏忽或其他原因引致，本公司无需就未能做出该竞拍承担责任。

DEPOSIT 押金

All absentee bidder and telephone bidder are requested by Stunning Arts to deliver to Stunning Arts a deposit of CAD\$2,000 or such higher amount as may be determined by Stunning Arts, and any financial references, guarantees and/or such other security as Stunning Arts may require in its absolute discretion as security for the bid. 本公司可要求电话竞拍者以及最高单价竞拍者完成预先登记程序及交付本公司 2,000 加币或其他由本公司决定之更大金额的定金及任何财务状况证明，担保或/及其他由本公司可全权酌情决定要求的抵押作为参加本公司竞拍的保障。

The contract between the buyer and the seller is concluded on the striking of the auctioneer's hammer, and payment of the purchase price for any lot and any buyer's expenses is due 7 business days after the conclusion of the auction. 买家及卖家之合约于拍卖官击锤时订立，而阁下作为买家必须于拍卖会结束后 7 个工作日支付拍品之买入价及任何买家费用。

NUMBER 编号	DESCRIPTION 名称	MAXIMUM BID 最高竞价
		CAD\$
		CAD\$
		CAD\$
		CAD\$
		CAD\$
		CAD\$
		CAD\$

TELEPHONE NUMBER DURING THE SALE 拍卖联络电话:

FOR WRITTEN/FIXED BIDS 书面竞拍

- Bids will be executed for the lowest price as is permitted by other bids or reserves. 竞拍将以尽可能低之价格进行
- Where appropriate your written bids will be rounded down to the nearest amount consistent with the auctioneer's bidding increments. 如适当时，阁下之书面竞拍价将会被大概调整至最接近拍卖官递增之竞拍金额

FOR TELEPHONE BIDS 电话竞拍

- Please clearly specify the telephone number on which you may be reached at the time of the sale, including the country code. We will call you from the saleroom shortly before your lot is offered. 请清楚注明于拍卖期间可联络阁下之电话号码，包括国家号码。我们会于阁下之拍品竞拍前致电给阁下。

I agree that I am bound by the Condition of Business for Buyer and the Authenticity Guarantee which are published in the catalogue for the sale on purchases at auction that I make. If any bid is successful, I agree that all sales are subjected to a 20% buyer's premium added to the hammer price, 18% on any bids over CAD \$ 50,000. 本人同意接受图册内列明之给卖家的规则及保证书，是次拍卖会上的一切交易均受以上条款所约束。若竞拍成功，本人愿意支付附加成交价之上的 20% 买家佣金，或以 50,000 加币以上成交的拍品之 18% 的买家佣金。

I consent to the use of this information and any other information obtained by Stunning Arts Gallery and Auction in accordance with the Guide for Absentee Bidders and Conditions of Business. I am aware that all telephone bid lines may be recorded. 本人同意 Stunning Arts Gallery and Auction 使用本人资料及根据给委托竞拍者指引与给买家业务规则内而取得至其他资料。本人明白所有电话竞拍会被录音。

SIGNED 签署 _____

DATE 日期 _____