



STUNNING ARTS  
GALLERY & AUCTION

六月多伦多亚洲艺术周重要拍卖会  
June Toronto Asian Art Week Auction



Vertical calligraphy text on the right side of the poster.





**Lot 001**  
**二十世纪早期 红木百宝格对**  
**PAIR OF ROSEWOOD CURIO CABINETS, EARLY 20TH C.**

With two drawers at the bottom, divided into various section for display, all above two drawers, supported on four slim cylindrical foot. 87\*34\*150cm

Provenance: Acquired in Hong Kong during the 1960's and 1970's.

\$1000-\$1500

**Lot 002**  
**十七 / 十八世纪 硬木酒桌**  
**HARD WOOD TABLE, 17/18TH C.**

Of rectangular top, supported by four slim feet connected with five stretchers. 111.5\*73\*85.5cm

\$500-\$800



**Lot 003**  
**晚清 酸枝花几对**  
**PAIR OF DOUBLE LOZENGE FORM PLANT STANDS, LATE QING**

Of double lozenge form, the wood of dark red tone. 32\*33\*73cm.

Provenance: Acquired in Hong Kong during the 1960's and 1970's.

\$400-\$600



**Lot 004**  
**民国 酸枝石面花几对**  
**PAIR OF ROSEWOOD PLANT STANDS WITH MARBLE INLAY TOPS, REPUBLICAN P.**

Comprising of two white marble inset stand, the wood of dark red tone. 93\*29cm.

\$600-\$800



**Lot 005**  
**晚清 酸枝八仙桌**  
**ROSEWOOD SQUARE FORM TABLE, LATE QING**

Of square form, supported on square section legs, ending in hoof feet, inset with two floating panels, the wood of dark red tone. 92\*92\*87cm.

Provenance: Acquired in Hong Kong during the 1960's and 1970's.

\$600-\$800



**Lot 006**  
**晚清 酸枝大公座椅对**  
**PAIR OF ROSEWOOD BAT AND CHIME CHAIRS, LATE QING**

the chairs with scrolling back brace and twin arm rests, both backsplat carved with bat and chime, the wood of dark purple tone. 56\*70\*100cm

Provenance: Acquired in Hong Kong during the 1960's and 1970's.

\$600-\$800



**Lot 007**  
**民国 酸枝云石太师椅配几三件套**  
**MARBLE INLAY ROSEWOOD CHAIRS & STAND SET, REPUBLICAN P.**

The chairs with scrolling back brace and twin arm rests, both chairs and table inset with circular and rectangular marble plaques, along with one stand set inlaid with marble on its top. Chairs: 46\*62\*98cm Stand Set: 42\*42\*81cm

Provenance: Acquired in Hong Kong during the 1960's and 1970's.

\$1,500-\$2,500



**Lot 008**  
**二十世纪 红木圈椅对**  
**HUALI STYLE ROSEWOOD HORSESHOE BACK CHAIRS, 20TH C.**

Of Huali Style Horseshoe back form, with curving top rail sloping down to the arms supported on serpentine side posts and terminating in a curved hook beyond the corner posts set with shaped spandrels, the back corner posts continuing below the rectangular frame, to the back legs joined by stretchers and a footrest with plain shaped apron, the wood of brownish-red tone. 63\*43\*90cm

Provenance: Acquired in Hong Kong during the 1960's and 1970's.

\$600-\$800



**Lot 009**  
**晚清 花梨木嵌牙木雕四方桌**  
**HUALI AND BURLWOOD INLAY TABLE, LATE QING**

Of square form, the table is finely decorated with burlwood inlay on top, the decoration depicts scholar's objects and horses, as well as auspicious symbols. 91\*91\*84.5cm.

Provenance: Acquired in Hong Kong during the 1960's and 1970's.

\$2,000-\$3,000



**Lot 010**  
**套几一组**  
**LACQUERED WOOD FOUR-PIECE NESTING TABLES SET, 20TH C.**

Carved delicately with various figures, comprising of four tables of various size, the wood of dark yellow tone. 31\*35\*66cm.

Provenance: Acquired in Hong Kong during the 1960's and 1970's.

\$150-\$250



**Lot 011**  
**十七 / 十八世纪 硬木酒桌**  
**HARD WOOD TABLE, 17/18TH C.**

Of rectangular top, with a pierced apron and supported on four slim legs. 102\*50.7\*83cm.

\$500-\$800



**Lot 012**  
**民国 花梨花几一对**  
**PAIR OF HUALI WOOD STANDS, REPUBLICAN P.**

Each with circular top supported on four elegantly curved cabriole legs connecting with a circular stretcher. 34.5\*89cm.

\$300-\$500



**Lot 013**  
**二十世纪 花梨茶棚**  
**HUALI WOOD TEA SHELF, 20TH C.**

A wood tea shelf, divided into open compartments of varying sizes, above two enclosed space including a double-open door space and a drawer. 107\*76.5cm.

\$300-\$500



**Lot 014**  
**民国 酸枝云石书桌**  
**SUANZHI WOOD MARBLE INLAID TABLE, REPUBLIC P.**

The oval form top inlaid with marble, framed in suanzhi wood and supported on four curved legs connected by three stretchers. 102\*21\*80cm.

\$600-\$1,000



**Lot 015**

**民国 酸枝四套几**

**SET OF FOUR SUANZHI NESTING TABLES SET, REPUBLICAN P.**

The set comprising of four stands with a square top and four straight legs connected with four stretchers. Biggest:71\*40\*40cm.

\$500-\$800

**Lot 016**

**民国 硬木四方高几**

**HARDWOOD SQUARE FORM TABLE, REPUBLICAN P.**

Of square top panel set within a narrow frame above openwork scrolling aprons, the four slender beaded legs joined by low humpback stretchers.82\*35\*35cm.

\$200-\$400



**Lot 017**

**晚清 酸枝大理石半月台**

**A SUANZHI MARBLE-INLAID DEMI-LUNE TABLE, LATE QING**

A Suanzhi rosewood marble-inlaid demi-lune table, late Qing dynasty, the semicircular top with an openwork carved scrolling apron, connecting with four slender legs joined by stretchers. 90cm x 45cm x 82.5cm

\$600-\$1,000



**Lot 018**  
**清 窑变釉赏瓶 带座**  
**FLAMBE GLAZE VASE WITH STAND, QING DYNASTY**

The body of tapering form, covered overall with a vitreous burgundy-red glaze streaked with deep purple. H:20cm

\$1,500-\$2,500



**Lot 019**  
**元或更早 褐釉双耳执壶 带座**  
**BROWN GLAZE DOUBLE EARS EWER, YUAN/EARLIER**

Of ovoid form, the body decorated with dark brown glaze with splash of yellowish orange glaze, the shoulder flanked with two loop handles and with a curved large handle, and a short straight mouth, the unglazed base reveals the buffware. H:25cm

\$1,500-\$2,500



**Lot 020**  
**清 青瓷小花盆**  
**CELADON GLAZE LOBED**  
**PLANTER, QING**

The body of slightly tapering form with lobes, covered overall in light apple green tone, the base drilled with a hole in the middle. H:10cm D:9cm

\$200-\$400



**Lot 021**  
**建窑小盏**  
**JIAN-TYPE TEA BOWL**

Of tapering form, the body covered with brown glaze and shortened to the base, the unglazed base reveals the buffware. D:10cm H:6cm

\$1,000-\$1,500



**Lot 022**  
**钧窑碗**  
**A LARGE JUN PURPLE SPLASHED BOWL**

Superbly potted with deep rounded sides rising from a slightly splayed foot, applied overall with a rich glaze of milky lavender blue suffused with a pale crackle and transmuting to a mushroom color at the rim, the interior decorated with vibrant splashes of purple. D:18cm H:8.5cm

Provenance: H.H. PAO Family Collection 鲍恒发家族旧藏

\$800-\$1,200

LOT 023-L0T 032 征集于多伦多资深香港移民藏家



**Lot 023**  
**张鸣珂 (1829-1908) 圆光书法**  
**ZHANG MINGKE (1829-1908) CALLIGRAPHY FAN**

Calligraphy, ink on a fan, signed by the artist with one seal, mounted.

\$500-\$800



**Lot 024**  
**温其球 (1862—1941) 山水扇面**  
**WEN QIQIU (1862-1941) LANDSCAPE FAN**

Depicting landscape, ink and color on a fan, signed by the artist with three seals, mounted.

\$600-\$1,000



**Lot 025**  
**容祖椿 (1872—1944) 花卉扇面**  
**RONG ZUCHUN (1872-1944) FLOWER FAN**

Painted landscape, floral and birds, dated 1291, ink on paper, signature and 3 seals of the artist, mounted.

\$600-\$1,000



**Lot 026**  
**樊浩霖 (1885-1962) 山水扇面**  
**FAN HAOLIN (1885-1962) LANDSCAPE FAN**

Painted landscapes and flowers, dated 1950, ink and color on paper, signature and 2 seals of the artist.

\$800-\$1,200





**Lot 027**

**汪亚尘 (1894--1983) 金鱼扇面**  
**WANG YACHEN (1894-1983) GOLDFISH FAN**

Painted flowers and fish, dated 1945, color on paper, signature and 3 seals of the artist.

\$800-\$1,200



**Lot 028**

**赵浩公 (1881 - 1947) 花卉扇面**  
**ZHAO HAOGONG (1881-1947) FLOWER FAN**

Painted landscapes, bird and flowers, dated 1944, color on paper, signature and 3 seals of the artist.

\$600-\$1,000



**Lot 029**

**张士保 (1805—1878) 书法扇面**  
**ZHANG SHIBAO (1805-1878) CALLIGRAPHY FAN**

Calligraphy, ink on gold-flecked paper, signature and 2 seals of the artist.

\$500-\$800



**Lot 030**

**梁绍熙 (光绪十四年举人) 书法圆光**  
**LIANG SHAOXI CALLIGRAPHY FAN, LATE QING**

Calligraphy, ink on paper, signature and 2 seals of the artist.

\$500-\$800



**Lot 031**  
**杨之光 (1930-2016) 《朝鲜舞女》 设色纸本 连框**  
**YANG ZHIGUANG (1930-2016), DANCING LADY**

Depicting an ethnic minority female dancer, ink and color on paper, framed. 41.5cm x 133cm without frame, 63.5\*39cm.

老藏家八十年代购自多伦多加华画廊

\$10,000-\$15,000



**Lot 032**  
**周思聪 (1939 ~ 1996), 《闽南五月》 设色纸本 立轴**  
**ZHOU SICONG (1939 - 1996), MAY IN MINNAN**

Depicting a lady holding a basket of fruits, titled and signed by the artist. with one artist's seal. Color and Ink on paper. Hanging Scroll. 35\*46cm

老藏家八十年代购自多伦多加华画廊

\$10,000-\$15,000



**Lot 033**  
**十八 / 十九世纪 水彩画一对**  
**A PAIR OF CHINESE EXPORT GOUACHE PAINTINGS, 18TH&19TH C**

Together with an early 19th-century Chinese Export watercolor and gouache painting of a tea plantation. 2 pieces. 40\*29cm each

\$1,000-\$2,000



**Lot 034**  
**赵少昂 (1905-1998) 题关山月**  
**(1912-2000) 梅竹鸟图 设色纸本 镜心**  
**ZHAO SHAOANG(1905-1998) AND**  
**GUAN SHANYUE(1912-2000)**

Depicting bamboo, prunus, and birds, color and ink on paper, with signature and four artist's seal. 82.7 cm x 50.5 cm

\$6,000-\$10,000



**Lot 035**  
**丁衍庸 (1902-1978) 小鸟 水墨**  
**纸本 镜心**  
**DING YANYONG (1902-1978) BIRD**

Depicting bird and scholar's rock, ink on paper, signature and one seal of the artist. 70 cm x 46 cm

\$1,500-\$2,500



**Lot 036**  
**黄磊生 (1928-2011) 花鸟四屏连框 设色纸本**  
**HUANG LEISHENG (1928-2011) FLOWER AND BIRD**

Comprising of four paintings, depicting bird and flowers, color and ink on paper, signature and 6 seals of the artist, framed. 22.2 cm x 68 cm each

\$5,000-\$8,000



**Lot 037**  
**徐庶之 (1922-2002) 山水斗方 设色纸本**  
**XU SHUZH (1922-2002) LANDSCAPE**

Depicting figures within the landscape with trees and mountains, color on paper, signed by the artist with three artist's seals, mounted. 68.5 cm x 68 cm

\$4,000 - \$6,000



**Lot 038**  
**哥釉青花香炉仔连坐 & 景泰蓝三足炉**  
**GE-TYPE AND CLOISSONNE ENAMEL CENSERS**

Of compressed globular form rising to an everted rim, the shoulder flanked with two lion head ears, the body covered with a crackle glaze and decorated with a blue-painted landscape, the base with a bluemark, accompanied with a fitted wood stand. H:7cm D:10cm The censer of compressed globular form rising to a domed cover, the body flanked with two upright ears and supported on three beast head feet. H:15cm.

\$500-\$700



**Lot 039**  
**晚清 佛像一组**  
**FAMILLE ROSE FIGURE OF HAPPY BUDDHA AND SHOULAO, LATE QING**

Depicting Shou lao, wearing a long and finely decorated robe, holding a wooden stick in his left hand, accompanied with a fitted wooden stand. H:28cm & Modeled wearing open robes, holding prayer beads in his right hand, the unglazed base drilled with a hole in the middle, accompanied with a fitted wooden stand, the base with four-character seal. H:30cm.

\$600-\$1,000



**Lot 040**  
**晚清 雕瓷小香插两件**  
**TWO FAMILLE ROSE INCENSE HOLDERS, 19TH CENTURY**

The group comprising of two carved porcelain vases, the first depicting two boys and painted with peach in orange glaze, the base with four-character Ding yisheng mark; the other of a figure form holding a vase. H:9.5cm each.

\$200-\$400



**Lot 041**  
**晚清 紫砂水盂 & 小香炉**  
**ZISHA WATERPOT AND CENSER, LATE QING**

The waterpot of slightly tapering form with a straight cylindrical rim, the body decorated with colored butterfly and florals, the censer of compressed globular form, glazed in brown. H:5cm;H:9cm.

\$300-\$500



**Lot 042**  
**青花小将军罐 & 青花花插 《康熙年制》款**  
**GROUP OF TWO BLUE AND WHITE VASES, KANGXI MARK**

The 'soldier' vase of baluster form, the body decorated with panels of flowers and birds, the domed cover attached with a beast handle; the gu vase of cylindrical form rising to an everted rim; both base with four-character Kangxi mark.H:18cm both.

\$300-\$500



**Lot 043**  
**晚清 青花赏瓶一组**  
**TWO BLUE AND WHITE VASES, LATE QING**

The vase of gourd form, the body painted with blue and white depicting flying dragon amidst scrolling clouds, the base with six-character Kangxi mark. H:20cm; The body of baluster form decorated with 'hundred antiques' motifs, the waisted neck flanked with two beast handles rising to an inverted rim, the unglazed foot ring reveals the buff ware. H:58cm

\$500-\$800



**Lot 044**  
**晚清 云石硬木插屏**  
**INSCRIBED DALI MARBLE PANEL AND STAND, LATE QING**

Of rectangular form, the marble of creamy beige tone suffused with dark russet streaks, set within a wood screen. Marble:29\*38cm, Including the stand:62cm

\$1,000-\$1,500



**Lot 045**  
**民国 紫砂加彩茶壶两个**  
**SET OF TWO ENAMELLED ZISHA TEAPOTS, REPUBLIC P.**

The set comprising of two teapots, one of cylindrical form enameled with flower and bird on the body. H:14cm D:13cm; the other of tapering form enameled with a blue flower on the body. H:18cm D:15cm

\$600-\$1,000



**Lot 046**  
**民国 四方广彩大花瓶 《大清嘉庆年制》款 连座**  
**CANTON ROSE SQUARE FORM VASE W/ STAND, LATE QING**

Of square-tapering form, the body decorated with figures within an indoor scene, surrounded by hundred antique motifs, the shoulder flanked with two bead head ears, the base with six-character Jiaqing mark, accompanied with a fitted wood stand. H:64cm

\$500-\$800



**Lot 047**  
**晚清 赏瓶一组**  
**GROUP OF TWO VASES, LATE QING**

Of globular form rising to an elongated cylindrical neck, the body decorated with red glaze, the unglazed foot ring reveals the buff ware, accompanied with a fitted wood stand.H:43cm; Of globular form, the body covered with rich red glaze mottled with blue and purple streaks, all lightening to a white mouth rim the base with four-character Jingdezhen mark. H:17cm

\$300-\$500



**Lot 048**  
**青瓷观音**  
**L O N G Q U A N**  
**SEATED FIGURE OF**  
**GUANYIN**

A celadon glazed Guanyin figure seated, overall covered in celadon glazed with the face and Buddhist chest and foot ring unglazed, hollow out from the base. H:35cm.

\$300-\$500



**Lot 049**  
**木座一组 6 件**  
**SET OF SIX CHINESE WOOD STANDS**

The group comprising of six wood stands in various forms. Largest: 10\*20.5\*9

\$200-\$400



**Lot 050**  
**粉彩大观音**  
**LARGE FAMILLE ROSE**  
**STANDING FIGURE**  
**OF GUANYIN**

Depicting a standing Guanyin, with long robes decorated with flowers and birds, standing on a lotus stand above the weaving sea. H:96cm

\$600-\$1,000



**Lot 051**  
**石湾公仔两个**  
**GROUP OF TWO SHIWAN**  
**FIGURES**

The group comprising of two shiwan figures, one figure wearing a long robe with hair tied on the top of the head holding a guqin in hands, the other also wearing a long robe with brown highlights, accompanied with a fitted wooden stand.H:20cm; H:28cm

\$200-\$400



**Lot 052**  
**孔雀蓝暗刻天球瓶 《景德**  
**镇制》款 (有冲线)**  
**TURQUOISE GLAZED**  
**BOTTLE VASE, JINGDEZHEN**  
**MARK**

Of baluster form rising to an elongated cylindrical neck, the body decorated with peonies, the unglazed base reveals the buffware. H:36cm

\$300-\$500



**Lot 053**  
**开光青花粉彩大罐 《大清康熙年制》款**  
**BLUE, WHITE, AND FAMILLE ROSE JAR, KANGXI MARK**

The jar of baluster form tapering to the everted foot, rising to a cylindrical neck, the body decorated with panels of bird and flowers against an interlaced blue floral background, the base with six-character Kangxi mark. H:27cm

\$600-\$1,000



**Lot 054**  
**清中晚 剔红盖盒**  
**CINNABAR LACQUER BOX, MID TO LATE QING**

The cover with layers of lacquer in red, black, and brown is deeply and crisply carved with Daoist figure Zhang Guolao, his donkey and another Daoist figure between pine trees and rocks. The exterior carved finely with peony rolls and auspicious symbols. The interior and the bottom of the box are lacquered black D:26cm

\$2,500-\$3,500



**Lot 055**  
**晚清 窑变釉小赏瓶**  
**MINIATURE FLAMBE GLAZE VASE, LATE QING**

Of globular form, rising to a waisted elongated neck to a straight mouth, the body covered in red glaze mottled with green streaks, the base with three-character red seal. H:14cm

\$300-\$500



**Lot 057**  
**十七/十八世纪 青花罐**  
**BLUE AND WHITE PLANTER, 17/18TH C.**

Of tapering form, the planter covered with blue and white floral motifs, including lotus and poney, rising to a rounded rim, the unglazed foot ring reveals the buff ware. 24.5\*16cm

\$2,000-\$3,000



**Lot 056**  
**晚清 三阳开泰窑变釉大赏瓶**  
**FLAMBE GLAZE VASE, LATE QING**

of a slightly compressed globular body rising to an elongated waisted neck to an everted rim, covered with black and red glaze. H:28cm

\$1,000-\$1,500



**Lot 058**  
**粉彩花卉纹碗 《大清道光年制》款**  
**FAMILLE ROSE FLORAL BOWL, DAOGUANG MARK**

The famille rose bowl decorated with poney, daisy and lotus blossom, the base with six-character Daoguang mark. 16.5\*8cm

\$600-\$1,000



**Lot 059**  
**粉彩花盆 《洪宪年制》款**  
**FAMILLE ROSE 'QUAILS' JARDINIERE, HONGXIAN MARK**

The jardiniere of tapering form, the body decorated with two birds within a landscape scene with flowers and scholar's rock, finely decorated with calligraphy in the upper section, the base with four-character Hongxian mark along with two holes. 22\*25cm.

Provenance: H.H. PAO Family Collection 鲍恒发家族旧藏

\$2,500-\$3,500



**Lot 060**  
**小花口碟 《康熙年制》款**  
**EXPORT BLUE AND WHITE LANDSCAPE DISH, KANGXI MARK**

With lobed rim, the interior decorated with five panels of landscape scene separated with five panels of fern and lingzhi motif, surrounded by a band of floral design, the base with four-character Kangxi mark. D:15cm

\$500-\$800



**Lot 061**  
**紫檀观音像**  
**POSSIBLY ZITAN SEATED**  
**FIGURE OF GUANYIN**

Seated in dhyanasana, the bodhisattva dressed in long flowing robes, falling open at the chest, her hair piled neatly atop her head. H:25cm

\$300-\$500





**Lot 062**  
**白玉雕件一组**  
**GROUP OF TWO JADE CARVINGS**

of cylindrical shape, finely carved white jade with archaic patterns. 5\*2cm of rectangular form, finely carved in low relief to one side with flower and bird. 5.4\*3.5cm

\$300-\$500



**Lot 063**  
**玉雕两件**  
**TWO CELADON JADE CARVINGS**

the recumbent creature carries a peach on its shoulder, detailed with bulging eyes and tail, the stone of an even celadon tone with natural inclusions. 5\*3cm; depicting an old man sitting on a chair, stone of even whitetone. 6\*4cm

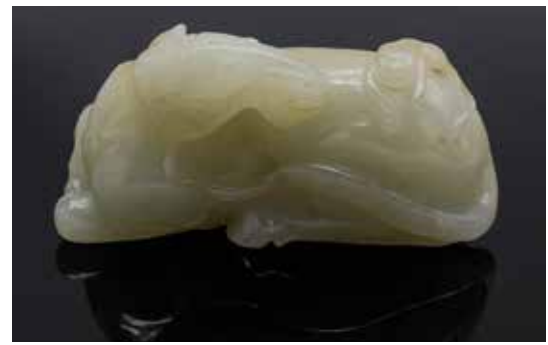
\$300-\$500



**Lot 064**  
**青白玉牛雕件**  
**CELADON JADE BUFFALO CARVING W/STAND**

The celadon jade naturalistically carved in a recumbent position with the head slightly turned, the long ridged horns pointing backward over the laid back ears, legs tucked beneath the body, tail flicked to one side, the underside showing the carved limbs with incised hooves. 11\*6cm

\$500-\$800



**Lot 065**  
**马上封侯白玉摆件**  
**A WHITE JADE HORSE AND MONKEY CARVING**

Carved in the form of a recumbent horse with its leg tucked beneath, its bushy tail wrapped around its body, with a small monkey perched on its back, the stone of an even color with some faint white and russet inclusions. 4\*8cm.

Provenance: H.H. PAO Family Collection 鲍恒发家族旧藏

\$2,000-\$3,000



**Lot 066**  
**青白玉小炉 & 青白玉卧马**  
**MOTTLED JADE CENSER AND HORSE**

The group comprising of a jade horse and a jade censer, the recumbent horse resting its head on the tail, the body of celadon tone with russet inclusions, 7\*3cm; the censer of compressed form supporting on three tapering feet, the rim flanked with two handles. 6\*3cm

\$300-\$500



**Lot 067**  
**玉雕小件七件**  
**GROUP OF SEVEN JADE ARTICLES**

The set comprising of a tubular jade figure, and a few pierced jade pieces decorated with either flower and bird or fu character. biggest width: 5cm.

\$300-\$500



**Lot 068**  
**核桃雕一对**

**PAIR OF CARVED WALNUT CARVINGS**

Two pieces of walnuts, carved with figures with pruned, the walnut has been well polished. 4cm x 3.5cm x 4cm

\$200-\$400



**Lot 069**  
**青白玉扳指一对**

**TWO JADE ARCHER RINGS**

The ring is of characteristic cylindrical shape, carved with deer, pine tree and crane on the exterior, stone of dark celadon tone with icy inclusions. 4\*3.5(outer diameter)\*2cm(inner diameter); The ring is of characteristic cylindrical shape, carved with floral scrolls all around the body from inside and out, stone of an even white tone, 3\*2.5(outer diameter)\*2cm(inner diameter)

\$300-\$500



**Lot 070**  
**青玉瑞兽摆件**

**CELADON JADE BEAST CARVING**

A celadon jade model of a unicorn, carved with the recumbent beast holding a lingzhi spray in its mouth. 7\*3cm

\$300-\$500



**Lot 071**  
**白玉戒指、翡翠手镯两件**  
**WHITE JADE RING AND JADEITE BANGLE**

Cylindrical jadeite bangle measuring approximately 30mm Outer Diameter, 20mm Inner Diameter; octagonal white jade ring measuring 80mm outer diameter, 60mm inner diameter.

\$300-\$500



**Lot 072**  
**古玉四件**  
**FOUR ARCHAISTIC JADE CARVINGS**

The group comprising four antique jade pieces, including a figure, a turtle carving, a bi disc, and a cylindrical carving. Largest L: 4.5cm W:3cm

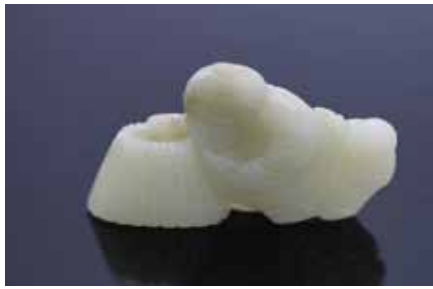
\$300-\$500



**Lot 073**  
**白玉翎管**  
**WHITE JADE HAT FINIAL**

Of tubular form, the stone of even white color with icy inclusions. 7\*1.5cm

\$600-\$800



**Lot 074**  
**青白玉鱼翁摆件**  
**CELADON JADE FISHERMAN CARVING**

The stone of pale celadon color with russet inclusions depicts a fisherman with his basket and a little boy beside him. 6\*4cm

\$300-\$500



**Lot 075**  
**青白玉回头兽**  
**CELADON JADE MYTHICAL BEAST**

Depicting a recumbent mythical beast with a horn on the head and a curling tail, the body of celadon tone with russet inclusions. 10\*5cm

\$600-\$800



**Lot 076**  
**白玉剑首**  
**WHITE JADE BI DISC**

of oval form, the color of a pale white tone with some russet inclusions, carved with archaic mystical patterns. 4.5\*3.5cm

\$300-\$500



**Lot 077**  
**白玉三多呈瑞牌**  
**WHITE JADE SANDUO PENDANT**

The plaque of circular form, one side decorated with peach and pomegranate, the reverse carved with San Duo Cheng Rui, the stone of an even creamy white tone 5\*4cm

\$500-\$800



**Lot 078**  
**十九世纪 浅绛彩洗手盆**  
**QIANJIANG ENAMELLED BASIN, 19TH C.**

The basin of rounded form, the interior decorated with ladies within a garden scene, surrounded by flowers, the unglazed base reveals the buff ware. D:37.5cm H:12cm

\$200-\$400



**Lot 079**  
**乾隆 出口粉彩碟一对**  
**PAIR OF EXPORT FAMILLE ROSE DISHES, QIANLONG PERIOD**

Each plate decorated with poney in the middle interior surrounded by poney, daisy, and branches, enclosed by a band of brown patterns, the unglazed foot ring reveals the buff ware. D: 22.5cm each

\$300-\$500



**Lot 080**  
**民国 料器一套三件**  
**THREE BLUE OVERLAY WHITE PEKING GLASS VESSELS, REPUBLICAN P.**

The group comprising of a vase and two bowls, the exterior decorated with same lotus blossom and leaves the pattern in transparent light blue tone, highlighted on the mouth and foot rim. H:24cm; 5.5cm; 5.5cm

\$500-\$800



**Lot 081**  
**十九世纪 蓝釉笔筒**  
**BLUE GLAZED BRUSHPOT, 19TH C.**

Of slightly waisted cylindrical form, the exterior covered with dark blue glaze, the unglazed foot ring reveals the buff ware. 14\*11cm

\$300-\$500



**Lot 082**  
**十九世纪 玉石盆景**  
**CHINESE HARDSTONE BONSAI, 19TH C.**

A gemstone prunus tree bonsai, the cloisonne jardiniere planted with a tree bearing agate, jade and various gemstone blossom and leaves. H:27cm

\$500-\$800



**Lot 083**  
**清 德化犀角杯一对**  
**PAIR OF BLANC DE CHINE LIBATION CUPS, QING**

The group comprising of two white glaze libation cups, the exterior carved with prunus blossom, accompanied with a fitted box. H:6cm D:9cm

\$500-\$800



**Lot 084**  
**清 西藏法器两件**  
**TWO TIBETAN BUDDHIST RITUAL OBJECTS, QING**

The rounded eight-pronged vajra with knob center finely cast in bronze, decorated with religious figures and symbols. 41cm<sup>1</sup>/<sub>4</sub> The instrument is decorated with a seashell on the top, along with flower carvings on its bronze body. 45cm

\$1,000-\$1,500



**Lot 085**  
**洪宪年制粉彩小碗**  
**FAMILLE ROSE BOWL, HONGXIAN MARK**

Of rounded form, decorated with chrysanthemum and butterfly in a famille rose palette, with Hongxian Nianzhi mark on the bottom. Diam: 12.3cm H:5.5cm

\$500-\$800



**Lot 086**  
**十九世纪 粉彩大花瓶**  
**LARGE FAMILLE ROSE JARDINIERE, 19TH C.**

Of slightly tapering cylindrical form, two panels of flower and bird against lotus and peony background, with unglazed base and drilled on the base. D:35.5cm H:31cm

\$300-\$500



**Lot 087**  
**十九世纪 青花赏瓶**  
**BLUE AND WHITE LANDSCAPE VASE, 19TH C.**

Of baluster form, depicts landscape scene on the body, with unglazed foot rim. H:23.5cm

\$200-\$400



**Lot 088**  
**彩墨一套**  
**SET OF FU LU SHOU INK STICKS**

Four ink sticks decorated with various auspicious patterns in Fu Lu Shou Xi form, accompanied with a box. approx. 10cm x 13cm each

\$200-\$400



**Lot 089**  
**玉雕鹅**  
**RUSSET JADE GOOSE**

of oval form, carved in openwork with a wild goose against a ground of lotus leaves, the stone with enhanced brown striations. 10\*6.5cm

\$200-\$400



**Lot 090**  
**三件玉件**  
**THREE JADE OBJECTS**

One cong, one smaller cong, and one cylindrical form tube, carved with archaic patterns, with russet inclusions. 4\*1.5cm, of cong form, celadon jade pendant with even natural tone 3\*1cm, of cylindrical form with brown-ish inclusions. 1.8\*2.3cm

\$300-\$500



**Lot 091**  
**玉手镯**  
**JADE BANGLE**

the bangle carved in low relief with grain pattern, 6.8cm

\$200-\$400



**Lot 092**  
**玉雕两件**  
**TWO JADE CARVINGS**

the long-tailed bird perched atop rockwork issuing lingzhi sprays, the wings neatly folded over the back, the slightly calcified stone of pale celadon tone with dark brown inclusions. 3\*4.5cm well worked in the form of two bats with the head turned towards its back and auspicious cloud pattern 4\*2.5cm

\$200-\$400



**Lot 093**  
**玉雕两件**  
**TWO JADE OBJECTS**

the saddled beast standing foursquare, its lowered head detailed with narrow almond-shaped eyes and a curled trunk between pointed tusks, caparisoned with an elaborate long tasseled rug incised with flowers and drapery, the stone of a celadon tone flecked with russet 3.5\*2.5cm of archaic knife money form, carved with cloud pattern, celadon jade with brown-ish inclusions 4\*3cm

\$200-\$400



**Lot 094**  
**玉雕两件**  
**GROUP OF TWO JADE CARVINGS**

well rendered as a deer resting before pine tree, the stone of a warm celadon color with russet skin skilfully worked to accentuate the pine branches, 6.5\*4cm; carved recumbent with wings neatly tucked back, the crested head with long elegant neck turned back over the body, the stone of pale celadon color with russet inclusions to the crest and underside. 2.5\*4cm

\$300-\$500



**Lot 095**  
**玉刀**  
**JADE BLADE**

of slightly tapered rectangular shape, three sides with thin rounded edges, the cutting edge cut slightly obliquely as is the roughly-finished grooved edge of the butt, with a single circular aperture showing traces of a hole of smaller diameter, the stone a mottled grayish-green color with black flecks and some buff flaws 5\*6cm

\$200-\$400



**Lot 096**  
**玉雕三件**  
**THREE JADE CARVINGS**

The group comprising of three jade bird carvings including two geese and a crane. 2.5\*3.5cm; 3\*3.5cm; 2.5\*2cm

\$300-\$500



**Lot 097**  
**玉手链**  
**JADE BRACELET**

composed of 9 miniature cong form jade pieces, with natural russet inclusions. 2.3cm\*0.8cm

\$200-\$400



**Lot 098**  
**玉扳指**  
**JADE THUMB RING**

the cylindrical jade carved with cloud pattern, with natural brownish russet inclusion, 3 2.5 2.3cm height

\$200-\$400



**Lot 099**  
**玉雕两件**  
**TWO JADE CARVINGS**

deftly carved with the animal lying on its stomach, lifting its head, and bearing its teeth, its legs tucked under the body and its front left paw grasping its tail, with icy-brownish inclusion, 4.5\*1.5cm, 4.5\*3cm

\$300-\$500



**Lot 100**  
**玉雕两件**  
**TWO JADE PENDANTS**

of cylindrical form, two jade pendant carved with archaic cloud pattern, 7\*2cm, 4\*2cm

\$300-\$500



**Lot 101**  
**青铜带钩**  
**BRONZE BELT HOOK**

the terminal superbly worked in the form of a mythical beast, inlaid with archaic pattern. 13\*5cm

\$200-\$400



**Lot 102**  
**玉雕件两件**  
**TWO JADE CARVINGS**

The bell finely carved, stone of pale celadon-white colour faintly mottled with icy and russet inclusion. 4\*3cm; the recumbent animal with its head tilted upwards in alert position, the stone of an even white tone with icy inclusions 3.5\*3cm

\$200-\$400



**Lot 103**  
**高古水晶圆环三件**  
**THREE ARCHAIC CRYSTAL BI DISCS**

of bi form, three archaic crystal pendant, one of vivid green 3cm, carved with archaic cloud pattern with icy inclusion 2.5cm, with icy inclusion 4cm

\$300-\$500



**Lot 104**  
**玉璧**  
**ARCHAIC JADE BI DISC**

worked on both sides with the 'grain' pattern, the stones of a greyish-green celadon tone with calcified milky inclusions. 5.2cm

\$200-\$400



**Lot 105**  
**玉带钩两件**  
**TWO JADE CARVED BELT HOOKS**

an archaic rectangular jade sword slide, carved to the top surface with rows of cloud pattern above a taotie mask, the stone of celadon tone with russet inclusions 8.5\*2.5cm, an archaic rectangular jadesword slide, carved with archaic cloud pattern, the stone of pale celadon-white tone. 4.5\*2 cm

\$200-\$400





**Lot 106**  
**徐彦洲 (1961-) 油画《小山村》**  
**XU YANZHOU, OIL PAINTING (GIRL)**

Depicting a girl standing against the door frame, oil on canvas, signed by the artist, framed. 120\*101cm

Provenance: Purchased from artist, Cowperwaite Family Collection; Published in 'Writing the Mind' by University Museum and art Gallery of the University of Hong Kong

\$15,000-\$25,000



**Lot 107**  
**徐彦洲 (1961-) 人物油画**  
**XU YANZHOU, OIL PAINTING (CAT)**

Depicting an old lady feeding a baby with a cat on the side, oil on canvas, signed by the artist, framed. 119\*119cm.

Provenance: Purchased from artist, Cowperwaite Family Collection

\$10,000-\$20,000



**Lot 108**  
**清 鑲金嵌綠松石度母像**  
**GILT BRONZE SEATED FIGURE OF TARA, QING**

The graceful and finely cast statue representing the primordial Adi Buddha Vajradhara seated in vajraparyankasana with arms crossed at the wrist, holding the vajra and Ghanta, adorned with turquoise insect jewelry, earrings and five leaf crown, scarves fluttering at his shoulders, wearing a short dhoti with sashes and scarves falling from the waist at either side and down on the pedestal before him. H:15cm.

Provenance: Cowperthwaite family collection.

\$7,000-\$12,000



**Lot 109**  
**清 阎摩铜佛像**  
**GILT BRONZE FIGURE OF YAMA DHARMA RAJA, QING**

Depicting a beast face figure stepping on a recumbent beast, the body decorated with turquoise. H:17cm

\$2,000-\$3,000



**Lot 110**  
**清 释迦摩尼 佛像**  
**GILT BRONZE SEATED FIGURE OF BUDDHA SHAKYAMUNI, QING**

Seated in vajraparyankasana, the right hand held in bhumisparshamudra and the left in dhyanamudra, wearing tight-fitting robe draped over the left shoulder and falling in undulous, folds over his arms and knees, these serene face with downcast eyes set in a meditative expression, flanked by a pair of long pendulous ears, all supported on a double lotus pedestal.

H:22cm

\$2,000-\$3,000



**Lot 111**  
**晚清 小多罗菩萨铜像**  
**GILT BRONZE SEATED FIGURE OF TARA, LATE QING**

The bodhisattva is shown seated in lalitasana with the right foot supported on a lotus stem that projects from the front of the double-lotus base. The hands are held in vitarkamudra with the left hand held in front of the chest and the right hand resting on the knee, each holding the ends of a lotus stem, extending up to the arms to flank the shoulders. H:8cm

\$300-\$500



**Lot 112**  
**清 青瓷花瓶 《大清乾隆年制》**  
**CELADON GLAZED OVOID JAR, QIANLONG MARK AND PERIOD**

The ovoid-tapering body is carved on two sides with a pair of flat crescent-shaped handles, and is covered overall with a glaze of a pale blue-green color. H:18.5cm.

Provenance: Christie's Paris 2006. Christies New York 2018, lot 615.

\$10,000-\$15,000



**Lot 113**  
**汉陶马头对**  
**TWO POTTERY HORSE HEADS, HAN DYNASTY**

A powerfully pair sculpted ancient Chinese Han Dynasty horse heads, of beautiful angular style, with an imposing sense of monumentality. 17\*7.5cm

Provenance: Cowperthwaite family collection.

\$600-\$1,000



**Lot 114**  
**蓝釉红龙赏瓶 《大清康熙年制》款**  
**UNUSUAL BLUE, WHITE AND COPPER RED BOTTLE VASE, KANGXI**

Of globular body tapering to a flared foot, rising to a straight cylindrical neck, the neck decorated with an iron red dragon and the lower body covered with dark blue glaze, the base with six-character Kangxi mark. H:24cm

Provenance: Cowperthwaite Family Collection

\$600-\$1,000



**Lot 115**  
**宜兴钧窑 《葛明祥制》款**  
**LARGE YIXING FLAMBE TRAY**

Of shallow oval form, the exterior is covered with a lavender-blue glaze shading to brilliant purple color. 57\*38cm

Provenance: Cowperthwaite family collection.

\$300-\$500



**Lot 116**  
**明代青花碗一组四件**  
**GROUP OF FOUR BLUE AND WHITE BOWLS, MING**

The group comprising of four blue and white bowls, one covered with interlaced floral design, the base with a fu character. 14\*8cm; the other bowl decorated with the key-fret pattern along the mouth rim, the base with a 'fu' seal. 12\*6.5cm; two decorated in the interior with a bird standing on a plant branch, the unglazed foot ring reveals the buff ware. D:10cm each.

\$500-\$800



**Lot 117**  
**青花碗对 《大清光绪年制》款**  
**PAIR OF BLUE AND WHITE DRAGON MEDALLION BOWLS, GUANGXU**

Each decorated with rounded panels of phoenix and dragon, the base with six-character Guangxu mark, the unglazed foot ring reveals the buffware. 12.5\*6cm.

Provenance: Cowperthwaite family collection.

\$1,200-\$2,000



**Lot 118**  
**青花洪福齐天盘 《大清光绪年制》款**  
**GUANGXU BLUE, WHITE & IRON-RED BAT DISH**

The shallow plate painted with an iron-red bat flying amidst scrolling clouds on the exterior and interior, the base with six-character Guangxu mark. D:20cm.

Provenance: Cowperthwaite Family Collection

\$400-\$600



**Lot 119**  
**十七世纪 鎏金面铜佛像**  
**PARCEL GILT BRONZE**  
**SEATED FIGURE OF**  
**GUANYIN, MING**

Depicted as a seated Buddhist figure, the gilt face cast vividly, with a tall tiara, wearing a long robe with one hand raised up in front of the chest and the other holding a hand. H:16.5cm

Provenance: Cowperthwaite Family Collection

\$500-\$800



**Lot 120**  
**曾小俊 枯木图 水墨纸本 立轴**  
**ZENG XIAOJUN, TREE STUDY**  
**1954**

Depicting two pine trees interlock together, signed by the artist with one seal, ink on paper, mounted, hanging scroll. 70.5\*60cm, 1991.

Provenance: purchased directly from artist, Estate of William Lipton, New York. Cowperthwaite family collection.

\$6,000-\$10,000



**Lot 121**  
**汉代黑陶罐**  
**LARGE BLACK POTTERY**  
**AMPHORA, HAN DYNASTY**

A black glazed amphora, Han dynasty, of a globular body rising to a square mouth, body decorated with carved with a spiral pattern, flanked by a pair of curved handle. H:32cm

Provenance: Cowperthwaite Family Collection

\$1,500-\$2,500



**Lot 122**  
**汉代黑陶茧型罐**  
**LARGE CHINESE BLACK POTTERY COCOON**  
**JAR, HAN DYNASTY**

Well potted, the body of 'cocoon' shape supported on a high splayed ringed foot, encircled by vertical triple-incised bands, set with a neck molded with horizontal ridges before the everted rim, the pottery of smooth texture, burnished to a deep grey color. H:30cm

Provenance: Cowperthwaite Family Collection

\$800-\$1,200



**Lot 123**  
**汉代彩陶茧型罐**  
**CHINESE POTTERY POLYCHROME**  
**PAINTED COCOON JAR, HAN**

Of horizontal ovoid shape, the pot has a slender neck rising to an everted rim and a pedestal foot, with excellent polychrome, painted decoration to the entire circumference. The strong remnants of the original polychrome decoration show vertical bands with geometric pattern alternating with repetitive scrolls. H:26cm

Provenance: Cowperthwaite Family Collection

\$800-\$1,200



**Lot 124**

**宋 & 金 定窑鹿纹刻花碗**

**FINE DING WHITE CARVED PEONY DEER BOWL, SONG/JIN**

The conical bowl incised with interlaced floral and deer in the interior rising to a lobed rim, the unglazed foot ring reveals the buff ware. 18\*7.5cm

Provenance: Cowperthwaite Family Collection

\$4,000-\$7,000



**Lot 125**

**明早期 松石釉人物一组**

**PAIR OF TURQUOISE GLAZE POTTERY FIGURES, EARLY MING**

Each figure depicted with a long mustache, wearing a loose turquoise tone robe, seated on a bronze stand which inscribed with 'made in china Yamanaka'. H:24.5cm including stand.

Provenance: Cowperthwaite Family Collection

\$500-\$800



**Lot 126**

**宋 黑釉陶罐**

**LARGE CHINESE BLACK & WHITE RIBBED JAR, SONG DYNASTY**

of compressed globular form rising from a short foot to a short wide neck flanked by a pair of strap handles with raised ribs terminating at the shoulder, the body applied in white slip with fifty-four slender horizontal ribs, covered overall save for the foot ring with a glossy rich black glaze thinning to white at the ribs and brown at the base, h. 20 cm.

Provenance: Cowperthwaite family collection.

\$3,000-\$5,000



**Lot 127**

**宋 钧窑碗**

**CHINESE JUNYAO PURPLE SPLASHED DISH, SONG DYNASTY**

The bowl of conical form rising to a slightly inverted rim, overall covered with greyish-green glaze and a purple splash to the interior. 16\*5.5cm.

Provenance: Cowperthwaite family collection.

\$500-\$800



**Lot 128**

**宋 耀州窑花口尊**

**CHINESE YAOZHOU CELADON GLAZE FOLIATE RIM BOWL, SONG**

with the compressed globular body rising to a slightly waisted neck opening into a wide, six-lobed rim with downturned petal tips, covered overall with an olive-green glaze 5\*11cm.

Provenance: Cowperthwaite family collection.

\$500-\$800



**Lot 129**  
**钧窑花口碗**  
**CHINESE JUN YAO LOTUS PETAL BOW**

in the shape of a lotus blossom, covered with blue-purplish crackled glaze. H:8cm. D:12cm.

Provenance: Cowperthwaite family collection.

\$600-\$1,000



**Lot 130**  
**元或更早 白釉执壶**  
**CHINESE WHITE GLAZE EWER, YUAN&EARLIER**

The globular body divided into eight lobes, rising from a short foot to a straight neck, flanked by a handle and a curved spout, covered in an even white glaze. H:18cm.

Provenance: Cowperthwaite family collection.

\$2,000-\$3,000

**Lot 131**  
**明早期 定窑卧佛像**  
**CHINESE DING TYPE RECUMBENT BUDDHA FIGURE, EARLY MING**

The Buddha lying peacefully on her right side, her head resting on a cushion or relying on her right elbow, supporting her head with her hand, evenly applied overall with a lustrous white glaze. 19\*15cm.

Provenance: Cowperthwaite family collection.

\$600-\$1,000



**Lot 132**  
**唐三彩随从像**  
**CHINESE SANCAI GLAZE IMPERIAL ATTENDANT FIGURE, TANG RUOSHEN MARK**

The standing figure wearing a tall hat with a long robe decorated in green and orange glaze standing straight on a tall base. H:76cm.

Provenance: Cowperthwaite family collection.

\$1,000-\$1,500



**Lot 133**  
**汉仕女像**  
**LARGE CHINESE FEMALE IMPERIAL ATTENDANT, HAN DYNASTY**

The pottery women figure depicted in long hair tied to a bun on the top left side of her head, wearing a long loose robe standing on a wood stand. H:49cm.

Provenance: Cowperthwaite family collection.

\$600-\$1,000



**Lot 134**  
**唐 黄釉执壶**  
**CHINESE YELLOW STRAW**  
**GLAZE EWER, TANG**  
**DYNASTY**

The base of overall a teardrop form, the mouth attached with a curved handle joining together at the lower end, the body glazed in yellow with unglazed lower body reveals the buffware. H:24cm

Provenance: Cowperthwaite family collection.

\$600-\$1,000



**Lot 135**  
**汉 青铜器两件**  
**GROUP OF A BRONZE BLADE AND CENSER SPOON,**  
**HAN DYNASTY**

The blade of crescent shape with beveled edges ending at the tapered point, 29.5\*3cm; The spoon of comprising of a flat rounded head and a long square-form handle. L:34cm.

Provenance: Cowperthwaite family collection.

\$400-\$600



**Lot 136**  
**鸡骨石高古帽饰**  
**CHINESE CHICKEN BONE**  
**JADE ZODIAC HEAD DRESS**  
**FINIAL**

The head dresser finial carved with the face of a mythical beast, the stone of greyish-brown tone, accompanied with a fitted stand. H:20cm

Provenance: Cowperthwaite family collection.

\$600-\$1,000



**Lot 137**  
**高古臂搁**  
**CHINESE ARCHAIC CARVED WRIST**  
**REST OR FITTING**

The wrist rest of overall rectangular form, the top raises and down smoothly, the body decorated with archaic pattern. 23\*6cm

Provenance: Cowperthwaite family collection.

\$400-\$600



**Lot 138**  
**龙山文化 玉刀**  
**CHINESE JADE BLADE, NEOLITHIC PERIOD**  
**LONGSHAN CULTURE**

The blade of a rectangular form with rounded edges, narrowing down to one end, the stone of orange tone with dark green inclusions, a hole drilled close to one end, accompanied with a fitted stand. H:21.5cm

Provenance: Sir David Percival collection (1892-1964). Cowperthwaite family collection.

\$2,500-\$3,500



**Lot 139**

**汉 / 战国时期 青、白玉璧**

**GROUP OF TWO JADE BI DISC, HAN & WARRING STATE P.**

The group comprising of two jade bi discs of ring form, one body decorated with grain pattern, the stone of celadon tone, Outer Diameter:3.5cm, Inner Diameter: 2cm; the other stone of dark green tone goes lighter to the edges as which is getting thinner. Outer diameter:9cm, Inner diameter: 5cm

Provenance: Harry Beasley (1880-1939) Anthropologist and Chinese Art Museum Curator, Canmore Museum, UK. Cowperthwaite family collection

\$800-\$1,200



**Lot 140**

**汉 祖母绿玉珠挂件**

**EARLY CHINESE EMERALD GREEN JADE LARGE BEAD PENDANT, HAN DYNASTY**

The bead of oval form with two narrow ends, the body decorated with repeated geometric form, the stone of dark green tone. 6.5\*2cm.

Provenance: Harry Beasley (1880-1939) Anthropologist and Chinese Art Museum Curator, Canmore Museum, UK. Cowperthwaite family collection

\$400-\$600



**Lot 141**

**珊瑚帽顶、鼻烟壶一组**

**PEKING GLASS SNUFF BOTTLE AND A CORAL BEAD HAT FINIAL**

Woven coral seed bead hat button, served as a finial during formal court ceremonies. The coral finial was used for 2nd rank officials .3.5\*3cm.; The bottle is carved through the deep-red semi-translucent overlay to the translucent, 'snowstorm' ground, with a continuous grapevine laden with heavy clusters of grapes and a katydid, with glass stopper.7\*5.5cm.

Provenance: Harry Beasley (1880-1939) Anthropologist and Chinese Art Museum Curator, Canmore Museum, UK. Cowperthwaite family collection

\$400-\$600



**Lot 142**

**战国 鎏金带钩**

**GILT BRONZE ORDOS BELT PLAQUE, WARRING STATES P.**

The belt plaque decorated with horses, the reverse attached with two loops. 8.5\*4cm

Provenance: Harry Beasley (1880-1939) Anthropologist and Chinese Art Museum Curator, Canmore Museum, UK. Cowperthwaite family collection

\$600-\$1,000



**Lot 143**

**汉 摇钱树装饰三件**

**THREE CHINESE BRONZE MONEY TREE ORNAMENTS, HAN DYNASTY**

The group comprising of three money-tree decoration of light green tone, each decorated with an archaistic dragon on the top. 10\*5cm.

Provenance: Harry Beasley (1880-1939) Anthropologist and Chinese Art Museum Curator, Canmore Museum, UK. Cowperthwaite family collection

\$600-\$1,000





**Lot 144**  
**明 白玉佛龕吊墜**  
**CHINESE WHITE JADE HIDDEN BUDDHA BEAD PENDANT, MING**

The pendant comprising of a Buddha-figure and a domed cover which carved with repeated cloud motifs, the stone of yellow tone with some russet inclusions. 4\*2cm

Provenance: Harry Beasley (1880-1939) Anthropologist and Chinese Art Museum Curator, Canmore Museum, UK. Cowperthwaite family collection

\$500-\$800



**Lot 145**  
**汉 猛犸象化石熊雕**  
**RARE CHINESE FOSSILIZED MAMMOTH TOOTH BEAR FIGURE, HAN**

Vividly depicting a bear, the stone tone separated from the middle, one side of yellow tone and the other of pale white tone, the body covered with russet lines. 8\*5cm.

Provenance: Harry Beasley (1880-1939) Anthropologist and Chinese Art Museum Curator, Canmore Museum, UK. Cowperthwaite family collection

\$1,000-\$1,500



**Lot 146**  
**清 端砚金盖鼻烟壶**  
**RARE CHINESE DUAN STONE ARCHAIC DRAGON SNUFF BOTTLE, QING**

Of flattened rounded shape with a slightly flared mouth, resting on a well finished oval foot, intricately carved in low relief on one face with two confronting dragons among wisps of smoke, the reverse with a four-character inscription in seal script ('precious treasure [from the] Duan stream'), the shoulders with animal-mask handles suspending mock elongated rings. 7\*5cm

Provenance: Cowperthwaite family collection

\$2,000-\$3,000



**Lot 147**  
**清 珐琅彩鑲金鼻烟壶**  
**BEIJING ENAMEL EUROPEAN SUBJECT SNUFF BOTTLE, QING**

The snuff bottle of tapering form, each side painted with a western women figure within a bat surrounded panel against a red ground with poney and branches, accompanied with a gold-tone stopper. 7\*5cm

Provenance: Cowperthwaite family collection

\$1,500-\$2,500



**Lot 148**  
**清 玛瑙鼻烟壶 & 玛瑙巧雕莲花鼻烟壶**  
**TWO AGATE CARVED SNUFF BOTTLES, QING DYNASTY**

Of tapering form, the body carved with sunflowers and branches, the stone of transparent orange tone darker to deep red at the top and lightening to creamy white at the base, accompanied with a bronzestopper.7\*4.5cm; the caramel-colored agate of rounded square form, relief-carved with goldfish and lotus flower, with green stopper.4\*7cm.

Provenance: Cowperthwaite family collection

\$500-\$800



**Lot 149**  
**清 矾红龙纹鼻烟壶 《道光年制》款**  
**IRON RED DRAGON SNUFF BOTTLE, DAOGUANG MARK&PERIOD**

Of rounded form, the snuff bottle by Jingdezhen imperial kilns is decorated with the dragon in iron red glaze. The base with four-character Daoguang mark.c.1840.8\*5cm.

Provenance: Cowperthwaite family collection

\$1,500-\$2,500



**Lot 150**  
**清 青花釉里红鼻烟壶**  
**BLUE WHITE COPPER RED SNUFF BOTTLE CORAL LID, QING**

The snuff bottle of cylindrical form, the body decorated with blue, white and iron red depicting a few figures within landscape scene, accompanied with an orange stopper.8.5\*2.5cm

Provenance: Cowperthwaite family collection

\$500-\$800



**Lot 151**  
**老坑翡翠鼻烟壶**  
**FINE CHINESE ICE-GREEN JADEITE SNUFF BOTTLE**

Of rounded form, the body of celadon tone with darker green inclusions, accompanied by a red and blue stopper. 6.5\*6cm

Provenance: Cowperthwaite family collection

\$1,000-\$1,500



**Lot 152**

**清 乾隆宝刀**

**IMPORTANT CHINESE IMPERIAL SWORD, QING DYNASTY**

The sheath superbly inlaid with Lac Burgaute abalone shell & gold wire work. The gilt-silver mounts decorated with twelve five claw imperial dragons among clouds chasing flaming pearls. The handle in Mughal style finished in black lacquer inlaid with gold, ruby, and emerald cabochons. 93.5\*5cm.

Provenance: Harry Beasley 1880-1939, Anthropologist and Chinese Art Museum Curator, Canmore Museum, UK. Cowperwaite family descent.

\$25,000-\$35,000



**Lot 153**

**明 宝刀**

**IMPORTANT CHINESE IMPERIAL SWORD, MING DYNASTY**

The sheath superbly decorated with lacquer, the handle with gold gilded flower pattern. 91.5\*5cm.

Provenance: Harry Beasley 1880-1939, Anthropologist and Chinese Art Museum Curator, Canmore Museum, UK. Cowperwaite family descent.

\$3,000-\$5,000



**Lot 154**  
**绢本册页片连框三个 仇英、文征明 款**  
**THREE PAINTINGS ON SILK, QING**  
**DYNASTY**

The group comprising of three silk paintings, depicting figures within an interior scene with calligraphy on the left, ink and color on silk, with three seals on each painting, framed. 61\*36cm each

Provenance: Harry Beasley(1880-1939) Anthropologist and Chinese Art Museum Curator, Canmore Museum, UK. By family decent.

\$6,000-\$10,000



**Lot 155**  
**双龙铜花插 《乾隆年制》款**  
**QIANLONG BRONZE DOUBLE DRAGON VASE**

The body of two oval form vase attached to each other mounted with archaic dragon design and beast heads, the base with four-character Qianlong mark. 12\*11.5cm

Provenance: Estate Harry Beasley (1880-1939) Anthropologist and Chinese Art Museum Curator, Canmore Museum, UK. By family decent.

\$10,000-\$15,000



**Lot 156**  
**乾隆铜制九龙玺**  
**LARGE IMPERIAL 9 DRAGON BRONZE SEAL QIANLONG PERIOD**

This square seal cast, carved and chased in extremely deep and detailed relief with a central crouching dragon chasing a pearl and accompanied by eight other dragons within waves and cloud bands in various poses. Two panels on the impression of the seal are decorated with sealed character script in Manchu and Chinese. The front is inscribed with the date. 17\*17cm

Provenance: Purchased Sotheby's 1967. Cowperthwaite family collections.

\$15,000-\$25,000



**Lot 157**  
**十八世纪 童子戏猫白玉雕件 连座**  
**WHITE JADE BOY AND CAT GROUP, QIANLONG PERIOD**

Depicting a boy playing with a cat, the stone of slightly transparent creamy white tone, accompanied with a fitted wooden stand. 4\*5cm.

Provenance: Harry Beasley (1880-1939) Anthropologist and Chinese Art Museum Curator, Canmore Museum, UK. By family decent.

\$3,000-\$5,000



**Lot 158**  
**黄玉龙凤刀**  
**FINE CHINESE YELLOW JADE DRAGON & PHOENIX KNIFE, QING**

The yellow jade knife of curved form, the end carved in openwork with a mythical beast, accompanied with a fitted wooden stand. 18.5\*3.5cm

Provenance: Harry Beasley (1880-1939) Anthropologist and Chinese Art Museum Curator, Canmore Museum, UK. By family decent.

\$1,000-\$1,500



**Lot 159**  
**清 玉猴雕件**  
**MOTTLED JADE MONKEY GROUP, 19TH CENTURY**

Vividly depicting two monkeys, the smaller one is standing on top of the bigger one, carved online its natural tone, the smaller monkey of brown tone and the bigger monkey of celadon tone, accompanied with a fitted wooden stand. 6\*4cm

Provenance: Harry Beasley (1880-1939) Anthropologist and Chinese Art Museum Curator, Canmore Museum, UK. By family decent.

\$500-\$800



**Lot 160**  
**清 双鹿莲花雕件**  
**WHITE JADE DOUBLE DEER LOTUS PENDANT, 17/18TH, KANGXI P**

Vividly depicting two deers recumbent with the head on each other's tail, the stone of a creamy white tone with some russet inclusions. 3\*3cm

Provenance: Harry Beasley (1880-1939) Anthropologist and Chinese Art Museum Curator, Canmore Museum, UK. By family decent.

\$1,000-\$1,500



**Lot 161**  
**十九世纪 老坑翡翠牌**  
**APPLE GREEN & WHITE JADEITE PLAQUE PENDANT, 19TH C.**

The plaque of rectangular form, one side carved with huge peach and the reverse carved with characters, all below the scrolling cloud, the stone of an apple green tone with white and dark green inclusions. 7.5\*4\*1cm

Provenance: Harry Beasley (1880-1939) Anthropologist and Chinese Art Museum Curator, Canmore Museum, UK. By family decent.

\$1,000-\$1,500



**Lot 162**

**十八/十九世纪 白玉璧 连座**

**VERY FINE CHINESE JADE DOUBLE QILIN DRAGON BI DISC, 18&19 TH C. W/STAND**

The bi disc carved in high-relief with two qilin facing head to head, the stone of celadon tone, accompanied with a fitted wooden stand. D:5cm

Provenance: Harry Beasley (1880-1939) Anthropologist and Chinese Art Museum Curator, Canmore Museum, UK. By family decent.

\$1,200-\$1,800



**Lot 163**

**十八世纪 / 十九世纪 玉雕、玛瑙雕一组**

**CARNELIAN CARVING AND JADE MANDARIN DUCK, 18&19 TH C.**

Vividly depicting a mandarin duck, the stone of creamy white tone with some russet and brown spots at the edges. 5cm\*2.5cm; Depicting peach, bat and pomegranate, the stone of slight transparent orange tone, accompanied with a fitted wooden stand. 4\*3cm.

Provenance: Harry Beasley (1880-1939) Anthropologist and Chinese Art Museum Curator, Canmore Museum, UK. By family decent.

\$600 - \$1,000



**Lot 164**

**玉雕摆件 连座**

**FINE WHITE JADE GOOSE AND PEACH GROUP, W/STAND**

Depicting vividly a recumbent goose, with head turning to the back grasping a peach, the stone of celadon tone, accompanied with a fitted wood stand. 6.5\*3.5cm

Provenance: Harry Beasley (1880-1939) Anthropologist and Chinese Art Museum Curator, Canmore Museum, UK. By family decent.

\$1,000 - \$1,500



**Lot 165**

**民国 掐丝珐琅太平有象对**

**A PAIR OF CLOISSONNE ENAMEL ELEPHANTS, REPUBLICAN P.**

This pair of elephants are modeled in mirror image, each standing foursquare with its head slightly turned to one side. The bodies are executed in gilt-bronze and decorated with colorful trappings. The back is set with a small gilt-bronze saddle cast and chased with lotus scrolls and embellished on both sides, surmounted by a square vase with loose ring handles. 27\*13.5cm

\$3,000 - \$5,000



**Lot 166**  
**夏商 古玉把件**  
**ARCHAIC JADE PIECE, XIA&SHANG**

The jade of rectangular form, drilled with a hole in the middle, the stone of green tone, attached to a russet tone pierced jade piece with a long rope. 6.8\*5.9

\$3,000-\$5,000



**Lot 167**  
**晚清 描金龙纹天球瓶 《大清光绪年制》款**  
**FAMILLE ROSE DRAGON VASE, GUANGXU MARK, LATE QING**

The globular body rising to an elongated waisted neck, the body decorated with the dragon in pursuit of a flaming pearl amidst scrolling cloud, base with six-character Guangxu mark. H:39.5cm

\$5,000-\$8,000



**Lot 168**  
**明 老提油瑞兽把件**  
**MOTTLED JADE MYTHICAL BEAST TOGGLE, MING**

The recumbent animal is depicted with head turned over its back, the face delicately carved. The stone is of an opaque greyish-brown tone with mottling and dark veining .5.5\*4cm

\$1,500-\$2,500



**Lot 169**  
**清 金钱纹青白玉挂件**  
**CELADON MONEY PATTERN JADE PENDANT, QING**

The stone of pale white jade with orangish inclusions depicts a dragon surrounded by two roles of money pattern. 8\*3cm

\$300-\$500



**Lot 170**  
**清 青白玉鼻烟壶两个**  
**TWO CELADON JADE SNUFF BOTTLES, QING**

The group comprising of two celadon jade snuff bottles, one of compressed globular form and stone of green tone and the other of oval form with creamy white tone stone, both with an orange stopper. H:6.5cm; 6.8cm

\$400-\$600



**Lot 171**  
**清 龙带钩三件**  
**THREE JADE DRAGON BELT HOOKS, QING**

the first with a curved shaft gently tapering towards the hook worked in the form of dragon and auspicious symbols, the underside with an oval knob for attachment, 9.5\*1.5cm; the second with a curved body and a hook rendered as a dragon head, the underside with an oval knob for attachment, the stone of a pale celadon colour, 8.5\*1.5cm; the third with a curved body and a hook rendered as a dragon head, the underside with an oval knob for attachment, the stone of a pale celadon colour, 9.5\*2cm.

\$600-\$1,000



**Lot 172**  
**清 喜字玉牌**  
**JADE DOUBLE HAPPINESS PENDANT, QING**

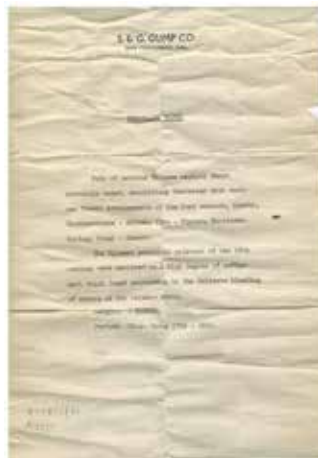
Carved in shallow relief on one side with a bird perched atop a planter, the middle carved with a Xi (happiness) character above a stylized lotus flower, the top and bottom with reticulated addorsed dragons. 5.5\*5cm

\$600-\$1,000

**Lot 173**  
**十七/十八世纪 粉彩花瓶一对**  
**PAIR OF FAMILLE ROSE 100 ANTIQUE VASES, 17&18 TH C.**

A pair of Chinese amphora vase, exquisitely decorated with various floral arrangements of four seasons, namely, Chrysanthemum-Autumn; Pine-Winter; Narcissus-Spring; Peony-Summer. H:17cm.

\$2,000-\$4,000







**Lot 174**  
**十七/十八世纪 青釉香炉 带座**  
**CELADON TRIPOD CENSER WITH STAND, 17&18 TH C.**

the compressed globular body rising from three short tapering legs to a short straight neck and broad everted rim, each leg with a narrow flange running up to a band at the shoulder, covered overall with an even dark-green glaze. 9\*11cm.

\$500-\$800



**Lot 175**  
**清 鸟食罐一组四个**  
**A GROUP OF FOUR BIRD FEEDERS, QING**

the slightly compressed globular lobed body rising from a flat base to a narrow incurved mouth, set to one side with bamboo handle for suspension; ¼ depicts blue and white landscape scene, H:3cm; the gently tapering deep 'U'-shaped vessel set with a small loop to one side for suspension, covered overall with a greyish-brown glaze with a network of golden-beige crackles, H:3.5cm; two bird feeders finely decorated with Kirin and clouds, H:3cm each

\$500-\$800



**Lot 176**  
**清 窑变釉水洗**  
**FLAMBE GLAZED BRUSHWASHER, QING**

Delicately potted of compressed circular form, supported on a shallow tapered foot, the incurved, rounded sides covered with a rich raspberry-red glaze with blue and purple flecks, the base unglazed. 10.5\*7.5\*4cm

\$500-\$800

**Lot 177**  
**民国 金木雕挂屏**  
**CARVED GILT WOOD PANEL, REPUBLICAN P.**

Chinese gilded carved wood relief panel intricately hands carved in high relief and gilded. depicts magpie and plum blossom. 91\*46cm

\$300-\$500





**Lot 178**  
**玉雕两件**  
**TWO JADE CARVINGS**

one mythical beast, one toad well worked in the form of two catfish grasping a lingzhi stem, their curled bodies detailed with finely incised fins, the smoothly polished stone of an even celadon color 3.5\*2.7cm

\$200-\$400



**Lot 179**  
**清 双兽耳铜香炉**  
**CHINESE BRONZE INCENSE BURNER, QING**

Of compressed globular form. the body flanked with two beast head ears, the base carved with a circular shape in the middle.H: 5.5cm

\$1,000-\$1,500



**Lot 180**  
**清 铜观音像**  
**CHINESE BRONZE STANDING GUANYIN STATUE, QING**

The Guanyin figure is shown standing on a base of swirling waves with her head turned to one side, offering a serene expression. The long, flowing robes are pulled tightly around the body and draped over her head in a cowl. Both hands are held in front of the body and hidden under voluminous robes, with pendent jewelry chains and bare feet exposed. H:15.5cm

\$500-\$800



**Lot 181**  
**灵璧石 带座**  
**LARGE LINGBI SCHOLARS ROCK AND STAND**

The black Lingbi stone with off-white calcitic veining in a classic mountain range form with peaks and valleys, and sharp ridges and deeply-furrowed hollows. The irregular surface is characteristically softly crumpled.120\*50cm

\$8,000-\$15,000



**Lot 182**  
**天然木笔洗**  
**ROOT WOOD CARVED BRUSH WASHER**

Depicting in the form of a mythical beast, the body carved along the natural shape of the material, supporting on three stands. 19\*13\*7cm

\$500-\$800



**Lot 183**  
**绿泥菊瓣紫砂壶**  
**YIXING GREEN CLAY TEAPOT**

The compressed body finely molded with narrow petals radiating from the similarly molded neck and foot rim, molded as a chrysanthemum blossom. H: 8cm D:12cm

\$500-\$800



**Lot 184**  
**李朝 白釉茶碗 & 清 白开片小茶杯 & 1960年代日本乐烧茶碗**  
**GROUP OF THREE BOWLS AND CUPS**

of the circle shape, covered with lustrous celadon-white glaze. D:11cm H:7.5cm of cylindrical shape, covered with thick snowy-white. D:7cm H:6cm The deep cylindrical bowl on ring foot with undulating rim, decorated overall in a thick black glaze, the ring foot with one seal marks, shallow depression to the interior of base D:12cm H: 8 cm

\$300-\$500



**Lot 185**  
**高丽 青瓷白鹤茶碗 & 元 青白瓷刻莲纹碗 & 清 汕头青花瓷碗**  
**GROUP OF THREE BOWLS**

On raised circular base, floral and sanggam interior, covered with light green glaze. D:14.5CM, H:6CM of conical form, incised with lotus pattern on the outside, covered with grey-greenish glaze. D:15.5cm, H:6cm.

\$300-\$500



**Lot 186**  
南宋 建窑小盏  
JIAN WARE SMALL TEA BOWL, SOUTHERN SONG DYNASTY

The Jian bowl is covered with a thick black glaze, stopping irregularly above the foot exposing the chocolate-brown body. D:9cm H:4.5cm

\$300-\$500



**Lot 187**  
建窑茶盏  
JIAN TEA BOWL

Of tapering body, covered in brownish-black glaze. 11.5\*6cm.

Provenance: Hong Kong Crafts Merchants Association, 1983

\$300-\$500



**Lot 188**  
清 定窑黑釉碗  
DING-STYLE HENAN BLACK GLAZED BOWL, QING DYNASTY

Of tapering body, covered in a black glaze. The foot ring is unglazed, exposing the fine brownish body. 14\*6cm

\$300-\$500



**Lot 189**  
铜炉 带座  
BRONZE BEAST CENSER WITH STAND, LATE QING

The censer of globular form the body decorated with panels of flowers and birds, the side flanked with two mythical beasts, accompanied with a domed cover with a beast handle on the top, the body supported on three legs carved as boys, accompanied with a fitted wooden stand. H:23cm

\$200-\$400

**Lot 190**  
宜兴彩泥雕刻紫砂壶  
YIXING CYLINDRICAL TEAPOT

of cylindrical shape, decorated with bamboo branches and lake landscape in relief. Of light brown on a reddish-brown color. The base with 4 character seal mark. H:14cm D:12cm

Provenance: Ex. Peking Gallery. Hang Hwie Pao, 1980 (receipt)

\$1,000-\$2,000





**Lot 191**  
**宜兴加彩紫砂壶**  
**YIXING ENAMEL TEAPOT**

of tapering square form, decorated with enamel panels of orchids and peony on the exterior. H:19cm D:11cm.

Provenance: Ex Coll. Hang Hwie Pao, ca 1980

\$1,000 - \$2,000



**Lot 192**  
**宜兴紫砂壶**  
**YIXING BALUSTER TEAPOT**

of baluster form, with flat cover and Metal handles. four character seal mark on the bottom, a pair of seal mark on top of the lid. H:16cm D:15cm

\$1,000 - \$2,000



**Lot 193**  
**宜兴孟臣紫砂壶**  
**YIXING BOMBE TEAPOT**

of bombe form, the teapot is in export style with brass handle, the base with four-character seal Chenghua Mengchen. H:8cm D:11cm

\$800 - \$1,200



**Lot 194**  
**宜兴瓜形紫砂壶**  
**YIXING FRUIT-SHAPED TEAPOT**

a melon form teapot and cover. The compressed circular body divided into four shallow lobes. The short spout and loop handle molded to simulate vine stalks, the cover carved with bamboo frame and twisted stem knob. The stoneware of red-brown color. The inner of the lid is marked with artist's seal Chen Xixian. H:10cm D:11cm

Provenance: H.H.Pao (tag)

\$1,000 - \$2,000



**Lot 195**  
**宜兴汲直紫砂壶**  
**YIXING CYLINDRICAL**  
**TEAPOT**

of cylindrical form, incised with calligraphy on the exterior, inner lid marked with artist's seal Shang Fu on the bottom. D:11cm H:12.5cm.

Provenance: Ex Peking Gallery, Hang Hwie Pao, ca 1980.

\$1,000 - \$2,000



**Lot 196**  
**宜兴钟式紫砂壶**  
**YIXING BELL-SHAPED**  
**TEAPOT**

of Inverted Bell Shape, incised with Calligraphy. Chips on the lid. Dragon seal mark on the bottom. H:12cm D:11cm

Provenance: Oriental Artland Co.1990 (receipt)

\$1,000 - \$2,000



**Lot 197**  
**宜兴六边竹段紫砂壶**  
**YIXING HEXAGON**  
**TEAPOT**

Of hexagon shape, imitates Bamboo form. The lid is depicted as the Yin Yang symbol. Seal mark on the bottom. H:8.5cm D:10cm.

Provenance: Hong Kong Art Craft Merchants, 1984 (receipt)

\$1,000 - \$2,000



**Lot 198**  
**宜兴桃型紫砂壶**  
**YIXING PEACH-SHAPE**  
**TEAPOT**

of peach shape. Incised scholar portrait and calligraphy, the top is depicted as a peach. H:7.5cm D:11cm

\$1,000 - \$2,000



**Lot 199**  
**宜兴汲直紫砂壶**  
**YIXING CYLINDRICAL TEAPOT**

A zisha teapot, of tall cylindrical form, carved with an inscription on the exterior, inner lid and the base marked with artist Wen Yuan-fang seal marks. The base with four character seal mark. D:12cm H:10.5cm.

Provenance: Ex Peking Gallery, Hang Hwie Pao, ca1980

\$1,000 - \$2,000



**Lot 200**  
**宜兴竹段紫砂壶**  
**YIXING BAMBOO BRANCH TEAPOT**

Of cylindrical form, depicted in the shape of the bamboo joint shape, with a tree shrew on top. Bottom with four character seal mark Yixing Zisha. D:12cm, H:8.5cm.

Provenance: Ex Galerie de Chine, Montreal ca 1980.

\$1,000 - \$2,000



**Lot 201**  
**宜兴六边紫砂壶**  
**YIXING HEXAGONAL TEAPOT**

of hexagonal form with metal handles and flat lid. The lid is marked with 6 character seal Yixing Zisha Minghu. H:12cm D:10cm.

Provenance: Ex. Peking Gallery, Hang Hwie Pao, ca 1980.

\$800 - \$1,200



**Lot 202**  
**宜兴竹段紫砂壶**  
**YIXING BAMBOO BRANCH TEAPOT**

of cylindrical form with button cover carved with bamboo on the exterior, incised with calligraphy, marked with two artist's seal Chen Chuanqin and Qisheng. H:6.5cm D:11cm.

Provenance: From a very famous Toronto Collector Hang Hwie Pao's previous collection

\$1,000 - \$2,000



**Lot 203**  
**宜兴加彩紫砂壶**  
**YIXING ENAMEL TEAPOT**

Of bombe form, depicts plum and Chinese Boy, metal handles. Enamel Plum and Chinese Boy. D:15cm H: 9cm



\$1,000 - \$2,000



**Lot 204**  
**十八 / 十九世纪 宜兴加彩紫砂壶**  
**YIXING ENAMEL TEAPOT, 18&19TH C.**

a good Yixing stoneware ewer and cover. Modeled with a flattened tall spout, circular domed cover painted in famille rose palette with bamboo and landscape in panel, trees and ruyi band and flora; sprays between the panels, the base unglazed with an impressive landscape seal mark. Rounded Square section. Metal handles. Enamel panels of landscapes. H:18cm D:15cm.

Provenance: Ex Coll. Hang Hwie Pao, ca 1980(tag)

\$1,000 - \$2,000



**Lot 205**  
**宜兴四方竹段紫砂壶**  
**YIXING SQUARE TEAPOT**

Of square form, imitates the shape of bamboo, with Ying Yang knob, floral seal mark at the bottom. H:9cm D:9cm

Provenance: Hong Kong Art Craft Merchants, 1984

\$1,000 - \$2,000



**Lot 206**  
**十八世纪 铜烛台对**  
**PAIR OF BRONZE GUARDIAN CANDLE PRICKETS, 18TH C.**

The two candlesticks each potted as an immortal figure standing straight supporting the pointed top with one hand, standing on a hexagonal stand. H:31cm.

\$600 - \$800





**Lot 207**  
**黄地粉彩缠枝莲纹碗 《大清嘉庆年制》款**  
**FAMILLE ROSE DRAGON BOWL, JIAQING MARK**

The bowl painted with Pheonix and interlaced poney against a bright yellow ground, the interior glazed green, the base with six-character Jiaqing mark. H:22cm

\$600-\$800



**Lot 208**  
**窑变釉双耳赏瓶 《大清乾隆年制》款**  
**FLAMBE GLAZED BOTTLE VASE, QIANLONG MARK**

The vase of tapering form narrowing to a waisted neck and an everted rim, all supported on a flared foot, the neck flanked with two ears, the body covered in a rich red glaze with purple and blue streaks. H:22cm

\$1,200-\$1,500



**Lot 209**  
**清 狮耳铜赏瓶 《珍玩》款**  
**BRONZE LION HANDLE VASE, QING**

The bronze vase of tapering form rising to a rounded mouth rim, the shoulder flanked with two beast head ears, the base with two characters Zhenwan mark. H:22cm.

\$500 - \$700



**Lot 210**  
**斋戒牌**  
**CARVED WOOD ZHAIJIE PENDANT**

The wood pendant carved in low-relief with archaistic pattern and Zhaijie character on the top, attached with a long rope through the drilled hole. 7.5\*5.5cm

\$300-\$500



**Lot 211**  
**十八世纪 嵌银铜赏瓶**  
**BRONZE LEI SILVER INLAY VASE, 18TH C.**

Of compressed globular form rising to a waisted neck and a straight mouth, supported on a tapering foot, the body decorated with circular rivet and two loose ring ears flanked on the side. H:32cm.

\$3,000-\$5,000



**Lot 212**  
**十九世纪 铜佛像**  
**BRONZE SEATED FIGURE OF AMITAYUS, 19TH CENTURY**

Depicting a Buddhist figure with eyes looking downward, wearing a tight robe with a high tiara, two hands resting on the feet, sitting on a rectangular stand, accompanied with a fitted box. H: 17cm

\$800 - \$1,200

**Lot 213**  
**十六 / 十七世纪 鎏金释迦牟尼像**  
**LACQUERED GILT BRONZE FIGURE OF BUDDHA SAKYAMUNI, 16&17 TH C.**

Depicting a Buddhist figure with beaded hairstyle, sitting on a lotus base, wearing loose robe reveals the check the figure is attached to a fitted wooden stand. H:39cm

\$3,000 - \$5,000



**Lot 214**  
**十九世纪或更早 释迦牟尼铜坐像**  
**SEATED TIBET/NEPAL BUDDHA SHAKYAMUNI, 19TH C. & EARLIER**

Depicting a gilt sitting Buddhist figure with beaded hair and hands resting on his legs. H 40 cm

Provenance: Waddington's Toronto, 11 December 2009, Lot 79.

Chinese Art from an Important Toronto Estate. The owner of this collection was a former minister with the Canadian government stationed in Ottawa during the 1980's. From a young age, he had a passion for Chinese and Japanese ceramics, inspired by fond visits to the Royal Ontario Museum during the 1950's. His Asian Art collection contains over 150 objects collected from the 1960's to the 2000's, with many objects acquired locally in Toronto from dealers such as Weisbrod and Dy, the Hundred Antiques, Pao and Moltke, and C. C. Lai Antiques. His favourite pieces were always his Chinese ceramics, which include Song ceramics, Ming and Qing porcelain, and blue and white export wares.

\$3,000 - \$4,000

**Lot 215**  
**青瓷水洗 《乾隆年制》款**  
**BRUSHWASHER, QIANLONG M.**

The rounded shallow bowl incised with repeated cloud patterns and lotus blossom, the body covered with celadon glaze, accompanied with a fitted box. D:17cm H:4.5cm

\$4,000 - \$6,000





**Lot 216**  
**清 茶晶鼻烟壶**  
**SMOKY QUARTZ SNUFF BOTTLE, QING**

The snuff bottle of oval form, the body of transparent brown tone carved in low-relief with an elder figure with two geese under a pine tree, and the reverse carved with an elder sitting under a pine tree with his attendant, accompanied with a creamy white translucent stopper. 7\*6\*3cm

\$800-\$1,200

**Lot 217**  
**江建祥制紫砂壶**  
**YIXING ZISHA TEAPOT JIANG JIANXIANG**  
**ZHI MARK**

Of rounded form, the clay of greenish Yixing clay, decorated with polychrome clay in goose head form on the lid, the bottom with 4-character artist's seal Jiang Jianxiang Zhi. H:8cm D:9cm

\$300-\$500



**Lot 218**  
**汉 / 西晋 青铜嵌金银弩零件一组**  
**A RARE GOLD-INLAID BRONZE CROSSBOW MECHANISM,**  
**HAN/WEST JIN**

A group of archaic bronze crossbow parts. Biggest width: 20cm

\$8,000-\$12,000

**Lot 219**  
**十九世纪 西洋人物座钟**  
**LARGE FRENCH GILT AND MANTEL**  
**CLOCK, 19TH C.**

With a detachable western goddess figure on the top, working condition. 64.5\*54.5\*26.5

\$4,000-\$7,000





**Lot 220**  
**十九世纪 珐琅彩座钟**  
**CLOISSONNE ENAMEL MANTEL CLOCK, 19TH C.**

With a cloisonné exterior and a lion on the top, working condition. 38\*18\*20.5CM  
 \$6,000-\$10,000

**Lot 221**  
**十九世纪 英格兰木座钟**  
**ENGLISH WOOD MANTEL CLOCK, RUSSELLS LTD., MANCHESTER, 19TH C.**

The rare clock with wood frame and three open door panels, by Russells Ltd. Manchester, with 8 bells and 9 gongs, working condition 53\*36.5\*27CM  
 \$4,000-\$7,000



**Lot 222**  
**矾红龙纹大缸 《大清光绪年制》款**  
**FAMILLE ROSE DRAGON JARDINIERE, GUANGXU MARK**

Of tapering form, the body decorated with a dragon in pursuit of a flaming pearl amidst scrolling cloud, the base with six-character Guangxu mark along with two drilled hold. H:19cm D:29.2cm

\$1,500-\$2,500



**Lot 223**  
**明 克拉克瓷小碟对**  
**PAIR OF BLUE AND WHITE KRAAK DISHES, MING DYNASTY**

Each with lobed rim, the interior decorated with hundred antique motifs, the unglazed foot ring reveals the buff ware. D:16.5cm

\$300-\$500



**Lot 224**  
**汉 茧型彩绘陶罐**  
**PAINTED COCOON JAR, HAN DYNASTY**

Well potted of oval form, rising to an everted rim and supported on a flared foot, the body decorated with a colorful archaic pattern. H:26cm.

Provenance: property from a Canadian Family acquired in Singapore during the early 1990s

\$800-\$1,200

**Lot 225**  
**鹤顶红小赏瓶雕件 《乾隆年制》款**  
**WELL CARVED HORNBILL HANGING VASE, QIANLONG MARK**

The hornbill carved vase with Qian Long Nian Zhi mark the body decorated with dragons connected by a red string to a wooden stand. H:8cm

\$4,000-\$7,000



**Lot 226**  
**十八 / 十九世纪 缅甸漆佛头**  
**LACQUER BUDDHA HEAD, BURMA, 18TH/19TH C.**

Vividly depicted Buddhist head, the face lacquered red and with closed eyes and a slightly smiling mouth, two long ears attached on the side, beaded hair tied to a bun on the top, accompanied with a fitted stand. 41\*22\*20cm

\$1,500-\$2,500



**Lot 227**

**十八/十九世纪 黄花梨盒**

**A RARE AND FINE HUANGHUALI BOX, 18/19TH C.**

Of rectangular section, the box and cover with straight sides and subtle horizontal beading, the top fitted with a single pristine panel of huanghuali wood containing multiple 'ghost face' graining and ruyi-formwhite metal inlays on the corners, the reverse hinged and the front with a central circular plate with lock receptacle and ruyi-shaped clasp, the edges protected with baitong mounts and the sides flanked with pair of baitong handles.

Provenance: The collection of an extremely important Vancouver Collector, acquired in Hong Kong during the 1980's. 5.5 x 14 x 8 inches 35.5\*21\*13cm

\$15,000-\$20,000

**Lot 228**

**十七世纪 黄花梨提盒**

**THREE TIERED HUANGHUALI SCHOLARS BOX, 17TH CENTURY**

All supported on a larger rectangular base frame of corresponding form, with an openwork spandrelled upright rising from each short side to meet the handle framing the three-tier box and cover, the interior of the top tier with a shallow tray resting on its rim, the cover centred with an opening on each short side aligned with the openings on the uprights for the metal rods securing the entire carry box in the base frame, the edges of the frame and handles with metal mounts. 34.5\*21cm.

Provenance: H.H. PAO Family Collection 鲍恒发家族旧藏

\$5,000-\$8,000



**Lot 229**

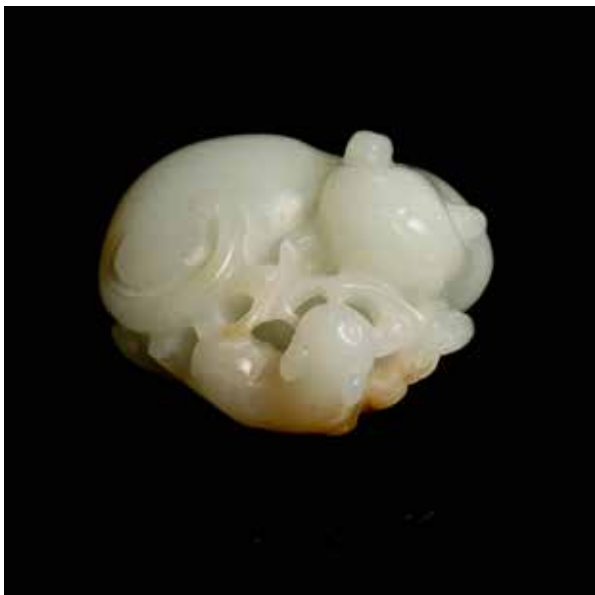
**十八世纪 白玉猫雕件**

**WHITE JADE CAT GROUP, 18TH C.**

Lively carved with two cats, a bigger one and a baby one, both recumbent and resting head on a branch, the stone of creamy white tone with russet inclusions. 4.5\*3.5\*3

Provenance: Formerly from the Alsdorff Collection. Purchased from Sotheby's New York 28 March 2000.

\$3,000-\$5,000



## LOT 230-243: Property from the Maklaiheung Gallery (励香堂)

The founder of the Maklaiheung Gallery is an international traveler and passionate collector of Asian Art. His acquisitions, with a particular focus on Chinese ceramics and archaeological curiosities, have spanned over sixty years. After graduating from the University of Oxford, he moved to Hong Kong during the late 1950's to begin a career as professor of English Literature at the University of Hong Kong. After living in Asia for over ten years, he now resides in the Greater Toronto Area. He spends his time teaching and maintaining his large collection of Asian artifacts.



**Lot 230**  
**十九世纪 黑玉龙雕件**  
**MOTTLED BLACK JADE ARCHAISTIC DRAGON ORNAMENT, 19TH C.**

The jade of bell shape, the body carved in low-relief with chilong, the stone of russet tone with dark greyish brown inclusions and dark brown splashes. 6\*3.8\*2.5cm.

Provenance: Property from the Maklaiheung Gallery.

\$1,500-\$2,000



**Lot 232**  
**十七/十八世纪 青玉剑饰**  
**RUSSET AND CELADON JADE SWORD ORNAMENT, 17/18TH. C**

The ornament of bell form, the body carved in low relief with an archaistic pattern, the stone of celadon tone with red and brown inclusions. 5.5\*3.5\*1.5cm.

Provenance: Property from the Maklaiheung Gallery.

\$2,000-\$3,000



**Lot 234**  
**新石器时代 玉鱼**  
**JADE FISH, NEOLITHIC PERIOD**

In the form of an archaic fish, stone of celadon green with russet inclusion. L: 5.2cm

Proveance: Purchased from the Estate of Harry Geoffrey Beasley (1881-1939), British anthropologist and museum curator.

\$300-\$400



**Lot 231**  
**宋/元 青玉狗雕件**  
**CELADON JADE DOG, POSSIBLY SONG/YUAN**

The stone of an even celadon tone with russet inclusions depicts a dog resting on the ground. W: 5.5cm.

Provenance: Property from the Maklaiheung Gallery.

\$1,000-\$1,500



**Lot 233**  
**周 青玉环**  
**CELADON JADE ARCHED HUAN, ZHOU DYNASTY**

The stone of celadon tone with russet inclusions. W:10.2cm.

Provenance: Acquired in 2007 from the Collection of Gustav Ralph von Konigswald (1902 - 1982). Konigswald was among the most significant paleoanthropologists of the world, who became famous through the discovery of the Homo erectus in Java. Koenigswald stayed in Peking in the late 1930s and was especially occupied with the acquisition of jades.

Provenance: Property from the Maklaiheung Gallery.

\$2,000-\$3,000



**Lot 235**  
**汉 铜铃对**  
**TWO BRONZE BELLS, HAN DYNASTY**

The group comprising of two bells, the body decorated with repeated grain patterns. H: 6.5cm, 4.5cm.

Provenance: Property from the Maklaiheung Gallery

\$300-\$400



**Lot 236**  
**十九世纪 黄地山水小碟一组两只**  
**TWO YELLOW GROUND LANDSCAPE DISHES, 19TH**

The group comprising of two dishes, the interior incised with a boat within a landscape, the other decorated with a similar pattern, the plate covered with bright yellow glaze. 8.2\*10.5\*1.5 each

Provenance: Acquired from Eldreds, Cape Cod. Property from the Maklaiheung Gallery

\$600-\$800



**Lot 237**  
**十九世纪 哥窑葫芦小赏瓶**  
**MINIATURE GUAN TYPE DOUBLE GOURD VASE, 19TH CENTURY**

of miniature form and generous proportions, the compressed globular lower bulb rising from a recessed base to a tall upper bulb, covered overall in a celadon-green glaze, the unglazed foot rim revealing the grey body, covered evenly all over in a celadon crackle glaze H:10.5cm.

Provenance: Property from the Maklaiheung Gallery.

\$300-\$400



**Lot 238**  
**越窑 吉州窑茶碗**  
**A YUEYAO AND JIZHOU TEA BOWL, SONG TO MING DYNASTY**

well potted with rounded sides resting on a straight hollow foot, applied with a lustrous brown glaze around the rim save for the base and foot and a swirl-shaped motif reserved in the biscuit on the interior D:14cm;15.3cm.

Provenance: Property from the Maklaiheung Gallery.

\$400-\$600



**Lot 239**  
**宋 青白瓷碗一组四只**  
**SET OF FOUR QINGBAI BOWLS, SONG DYNASTY**

The group comprising of four celadon glazed bowls in various sizes and form. Acquired in the early 2000s. D: 14.2cm; 14.4cm; 14.8cm; 15cm.

Provenance: Property from the Maklaiheung Gallery.

\$600-\$800





**Lot 240**  
**1969 年 粉彩文革宣传瓷板画**  
**FAMILLE ROSE CULTURAL REVOLUTION PORCELAIN PANEL, 1969**

The panel depicts three revolution figures in famille rose palette, one female warrior, one male commander and one militia. 36.5\*25.5cm.

Provenance: Property from the Maklaiheung Gallery.

\$600-\$800

**Lot 241**  
**晚清 黄釉花鸟纹琮瓶**  
**YELLOW GLAZED CONG FORM 'FLOWER AND BIRD' VASE,**  
**LATE QING**

Modeled after an archaic jade cong, each long edge of the square-sectioned body with eight raised horizontal bands within a raised rectangular frame, all supported on a short foot and surmounted by a gently tapered neck, covered overall save for the foot ring with a rich yellow glaze, decorated with a landscape scene. H:24cm.

Provenance: Acquired from Sloans and Kenyons in 2006, property from the Maklaiheung Gallery.

\$600-\$800



**Lot 242**  
**一世纪 玛瑙项链**  
**CARNELIAN & INDO PACIFIC BEAD NECKLACE, 1ST C. BC**

The necklace composed of 34 poppy-ish globular beads, length:64cm.

Provenance: Property from the Maklaiheung Gallery.

\$800-\$1,200

**Lot 243**  
**清 龙泉青瓷三足香炉**  
**LONGQUAN CELADON TRIPOD CENSER, 19TH CENTURY**

The compressed body has three narrow flanges formed by slip beginning at a slight molded ridge on the shoulder and trailing down each of the three slightly splayed, conical legs, all below the cylindrical neck that rises to a flat, everted rim. The censer is covered overall with a celadon green glaze of even tone that thins on the flanges and ends at the bottom of the legs to expose the pale grey ware. In the style of Southern Song, or more accurately, that of the ancient bronze Li (a ceremonial cooking vessel, similar to Ding but without ears), the glaze is of typical Longquan celadon color but the body and the rim are fluted in chrysanthemum petal style which is rare. H:9.5cm.

Provenance: Property from the Maklaiheung Gallery.

\$600-\$800





**Lot 244**  
**杂家册页六件**  
**CHINESE SCHOOL SIX ALBUM PAGES**

Each ink and color and includes After Yun Shouping (1633-1690), Plum Blossom; Attributed to Li Shan (1686-1762), Mantis and Florals; Signed Li Shan, Orchids; and three unknown artists. With various collector seals and notes written in the margins. Bamboo:32\*26cm; Mantis:32\*24.5cm; Plum:32.5\*30.5; Orchid:34\*25.5; Purple Flower:23.5\*33cm; Lotus:20\*30cm.

Provenance: The Collection of Late Paul Duval (1922-2018), Esteemed Canadian Art Author. Acquired at Parke-Bernat Galleries, New York, Chinese Art from the Estate of the Late C.T.Loo', 10-11 October 1962 (卢芹斋旧藏)

\$1,500-\$2,500



**Lot 245**  
**四本中国绘画书籍**  
**FOUR VOLUMES ON CHINESE PAINTING**

The group comprising of four Chinese painting books. Li and Watt, 'The Chinese Scholar's Studio: Artistic Life in the Late Ming' (1987); Cahill, 'Treasure of Asia: Chinese Painting' (1960); Cahill 'Chinese Painting' (1977); Hejzlar 'Chinese Watercolours' (1988).

Provenance: The Collection of Late Paul Duval (1922-2018), Esteemed Canadian Art Author.

\$150-\$250



**Lot 246**  
**十一本中国艺术书籍**  
**ELEVEN VOLUMES ON CHINESE ART**

Ayers, 'Far Eastern Ceramics in the Victoria and Albert Museum' (1980); Loehr 'Ritual Vessels of Bronze Age China' (1968); 'Imperial Taste: Chinese Ceramics from the Percival David Foundation' (1989); Los Angeles County Museum, 'The Arts of the T'ang Dynasty' (1957); Hobson, 'Chinese Pottery and Porcelain' (1976); Lee, 'A History of Far Eastern Art, 4th Edition' (1982); 'The Museum of East Asian Art, Inaugural Exhibition' (1993); Yang, Zhang, and Shao, 'The Ceramics of China' (1985); 'The Genius of China' (1973); Fong, 'The Great Bronze Age of China' (1980); Lion-Goldschmidt 'Chinese Art: Bronze, Jade, Sculpture, Ceramics' (1961).

Provenance: The Collection of Late Paul Duval (1922-2018), Esteemed Canadian Art Author.

\$300-\$400



**Lot 247**  
**十七 / 十八世纪 青白玉杯**  
**PALE CELADON ARCHAIC FORM JADE WATER CUP,**  
**17/18 TH C.**

The cup of shallow cylindrical form, the body attached with two ears and a curved handle, the body decorated with grain patterns, the stone of celadon tone with some russet inclusions. D:6.5cm H:3cm

Provenance: Old TaiwaneseCollection

\$4,000-\$6,000



**Lot 248**  
**1916 年 浅绛彩人物瓷板插屏**  
**QIANJIANG ENAMEL PORCELAIN PANEL, DATED 1916**

Portraying two scholars playing chess under a pine tree with their attendants on the side watching, amidst a landscape scene with scholar's rock and river in the background, titled and signed by the artist with a seal, accompanied with a fitted wooden stand. Porcelain panel: 25.8cm x 38.7cm

Provenance: A Montreal Estate.

\$6,000-\$10,000



**Lot 249**  
**青釉描金葵形花盆对带原座 《大清道光年制》**  
**GILT DECORATED TURQOISE GLAZE PLANTERS, DAOGUANG MARK AND PERIOD**

Each of quatrefoil section, the exterior with stylized lotus blossoms issuing exuberant scrolling stems in gilt outlines, the base with six-character Daoguang mark. 16.5\*21.5\*8.5cm

\$8,000-\$12,000

## LOT 250-LOT 277

The owner of this collection was a former minister with the Canadian government stationed in Ottawa during the 1980's. From a young age, he had a passion for Chinese and Japanese ceramics, inspired by fond visits to the Royal Ontario Museum during the 1950's. His Asian Art collection contains over 150 objects collected from the 1960's to the 2000's, with many objects acquired locally in Toronto from dealers such as Weisbrod and Dy, the Hundred Antiques, Pao and Moltke, and C. C. Lai Antiques. His favourite pieces were always his Chinese ceramics, which include Song ceramics, Ming and Qing porcelain, and blue and white export wares.



### Lot 250

#### 喜上梅梢大碗 《大清光绪年制》

#### LARGE MAGPIE AND PRUNUS BOWL, GUANGXU MARK AND PERIOD

Painted magpies standing on prunus branches on a yellow ground, six character Guangxu mark at the base, D 19.5 cm.

Published "Colour and Clay: An Exhibition of Chinese Qing Dynasty Porcelain from Toronto Collections," Waddingtons.ca, December 2014, no. 32. Frank Crane, The Hundred Antiques Toronto; Chinese Art from an Important Toronto Estate.

\$2,000-\$3,000



### Lot 251

#### 斗彩竹子碟对 《大清嘉庆年制》

#### RARE PAIR OF DOUCAI BAMBOO DISHES, JIAQING MARK & PERIOD

The dishes are painted with bamboos, signify youth, perseverance and humility, six character mark Jiaqing at the base, D 14.7 cm.

Published "Colour and Clay: An Exhibition of Chinese Qing Dynasty Porcelain from Toronto Collections," Waddingtons.ca, December 2014, no. 24. Pao & Moltke, Toronto; Chinese Art from an Important Toronto Estate.

\$5,000-\$7,000



### Lot 252

#### 清青花人物故事碗 《大清康熙年制》

#### LANDSCAPE & WESTERN FIGURES' ENAMEL VASE, KANGXI MARK

The bowl decorated with figures with scenes from 'Romance of the Western Chamber', the base with six-character Kangxi mark. D 19.5 cm

Chinese Art from an Important Toronto Estate.

\$5,000-\$7,000



**Lot 253**  
**八吉祥莲纹碗 《大清光绪年制》 (有冲线)**  
**BLUE AND WHITE BUDDHIST EMBLEM BOWL, GUANGXU (HAIRLINE)**

The bowl decorated with Buddhist motifs and repeated lotus blossom, the base with six-character Guangxu mark. D 13.5 cm

\$3,000-\$4,000



**Lot 254**  
**民国 粉彩“万寿”碗对 《大清光绪年制》**  
**PAIR OF FAMILLE ROSE WAN SHOU BOWLS, REPUBLICAN PERIOD**

Each bowl decorated with characters within rounded panel against a bright yellow ground with repeated motifs, the base with six-character Guangxu mark. D 17 cm

\$400-\$600



**Lot 255**  
**青花龙盘 《大清光绪年制》**  
**BLUE AND WHITE DRAGON DISH, GUANGXU MARK AND PERIOD**

The plate decorated with a flying dragon amidst flaming clouds chasing a flaming ball, the base with six-character Guangxu mark. D 18.5 cm

\$2,000-\$3,000



**Lot 256**  
**青花矾红蝠纹 《大清光绪年制》**  
**BLUE, WHITE AND IRON RED BAT DISHES, GUANGXU MARK AND PERIOD**

Each of iron red and blue and white porcelain dish painted in delicate shades depicting auspicious bats amidst cobalt blue clouds, the base with six-character Guangxu seal mark in blue. D14.1 cm

\$1,000-\$1,500



**Lot 257**  
**光绪 青花莲纹碗对 《大清光绪年制》**  
**PAIR OF BLUE AND WHITE LOTUS DISHES, GUANGXU MARK & P.**

The dishes painted with a frieze of lotus meander above a petal lappet, six character Guangxu mark at the base, D 15.5 cm

Published "Colour and Clay: An Exhibition of Chinese Qing Dynasty Porcelain from Toronto Collections," Waddingtons.ca, December 2014, no. 24. Pao & Moltke, Toronto; Chinese Art from an Important Toronto Estate.

\$2,500 - \$3,500



**Lot 258**  
**民国 粉彩牡丹碗**  
**FAMILLE ROSE PEONY BOWL, REPUBLICAN PERIOD**

The bowl decorated with peonies along the exterior, the base with six-character Guangxu mark, the unglazed foot ring reveals the buff ware. D 12.5 cm

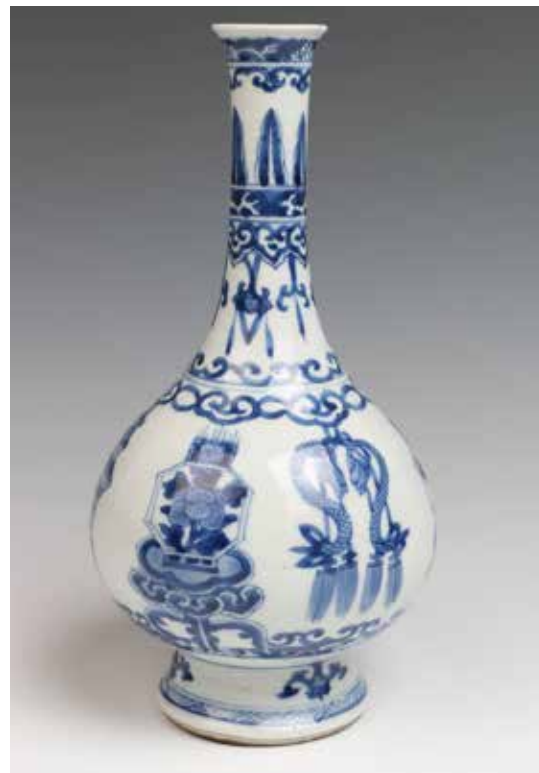
\$400 - \$600



**Lot 259**  
**十九世纪 料器赏瓶对**  
**PAIR OF REALGAR IMITATION GLASS BOTTLE VASES, 19TH**

Each vase of oval form, rising to a waisted neck, the body covered with a red tone with black streaks. H 23 cm

\$1,500 - \$2,500



**Lot 260**  
**康熙 出口青花赏瓶**  
**RARE EXPORT BLUE AND WHITE BOTTLE VASE, KANGXI PERIOD**

Of compressed globular form rising to an elongated waisted neck and an everted rim, all supported on a splayed foot, the body decorated with Buddhist motifs, the base with a blue mark seal. Michael B. Weisbrod, New York. H 24 cm

Provenance: Chinese Art from an Important Toronto Estate.

\$3,000 - \$4,000



**Lot 261**  
**矾红双龙纹大盘对《大清光绪年制》**  
**PAIR OF LARGE IRON RED DRAGON CHARGERS, EARLY 20TH**

Each decorated with two dragons in pursuit of a flaming ball amidst scrolling cloud, the base with six-character Guangxu Mark D 34.5 cm

\$2,000 - \$3,000



**Lot 262**  
**康熙 松石釉将军罐**  
**PAIR OF EXPORT TURQUOISE GLAZED GINGER JARS, KANGXI P.**

Each of globular form, the body glazed turquoise blue, each accompanied with a domed wooden cover, the unglazed base and mouth rim reveals the buff ware. H 19.5 cm

\$400 - \$600



**Lot 263**  
**明 磁州竹纹葫芦罐**  
**UNUSUAL CIZHOU BAMBOO DOUBLE GOURD VASE, MING DYNASTY**

Of double gourd form, the body decorated with bamboo against a yellowish brown crackle glaze, the unglazed base rim reveals the buff ware. Provenance: Weisbrod and Dy, Toronto. H 30 cm

\$1,000 - \$1,500



**Lot 264**  
**十九世纪 出口粉彩喜鹊将军罐**  
**PAIR OF EXPORT FAMILLE VERTE MAGPIE GINGER JARS, 19TH C.**

Each of baluster form rising from a splayed foot to a straight mouth, accompanied with a domed cover, the body decorated with birds, poney, and scholar's rock, accompanied with a fitted wooden stand. H 41 cm

\$3,000 - \$4,000



**Lot 265**  
**民国 粉彩柠檬绿釉葫芦瓶 《大清乾隆年制》**  
**FAMILLE ROSE LIME GREEN DOUBLE GOURD VASE, REPUBLICAN**

Of double gourd form, the body decorated with scholar's rock, chicken, prunus and poney, all against a lime green ground, the base with six-character Qianlong Mark H 32 cm

\$2,000 - \$3,000



**Lot 266**  
**光绪 黑地龙纹碗 《大清光绪年制》**  
**BLACK GROUND DRAGON BOWL, GUANGXU MARK AND PERIOD**

Depicting a flying dragon amidst flaming clouds against a black ground on the exterior, the base with six-character Guangxu mark. D 16 cm

\$800 - \$1,200



**Lot 267**  
**康熙 出口青花仕女碗 《大明成化年制》**  
**EXPORT BLUE AND WHITE LADIES BOWL, KANGXI PERIOD**

The bowl of slightly conical form with eight lobes, each lobe painted with some ancient ladies on the exterior, the base with six-character Chenghua Mark D 15 cm

\$1,000 - \$1,500



**Lot 268**  
**粉彩莲纹蝙蝠碗 《大清嘉庆年制》**  
**FAMILLE ROSE BOWL, JIAQING MARK AND PERIOD**

The globular body decorated with interlaced lotus blossom below bats and scrolling clouds surrounding panels of Chinese characters, the base with six-character Jiaqing mark. D 14 cm

\$400 - \$600





**Lot 269**  
**十九世纪 粉彩八仙人物四方瓶 连座**  
**FAMILLE ROSE IMMORTALS VASE W/ STAND, MID 19TH CENTURY**

The slightly tapering body of square section, the body painted with Daoist figures and landscape, the base with six-character Daoguang Mark, accompanied with a fitted wood stand. H 29.5cm

\$1,000-\$1,500

**Lot 270**  
**十九世纪 青花寿字赏瓶**  
**BLUE AND WHITE SHOU BOTTLE VASE W/ STAND, LATE 19TH**

Of globular body rising to a waisted neck and supported on a straight foot, the exterior painted with interlaced floral design surrounding a shou character, the base with six-character Qianlong Mark, accompanied with a fitted wooden stand. H 22 cm

\$600 - \$800



**Lot 271**  
**民国 百花不落地大笔洗**  
**LARGE FAMILLE ROSE MILLEFLEUR POT W/ STAND, REPUBLICAN P.**

One famille rose mille fleurs jar, of compressed globular body, the exterior enameled with a profusion of mixed flowers including peony, chrysanthemum, hibiscus and morning glory, the recessed base inscribed with a four-character Qianlong mark, accompanied with a fitted wooden stand. D: 24 cm

\$1,000 - \$1,500



**Lot 272**  
**民国 粉彩大龙盘 《大清乾隆年制》**  
**LARGE FAMILLE ROSE DRAGON CHARGER, REPUBLICAN PERIOD**

Depicting two dragons in pursuit of a flaming ball amidst scrolling cloud against a bright yellow ground, the base with six-character Qianlong Mark, D 28 cm

\$400 - \$600





**Lot 273**  
**光绪 暗刻龙纹大盘**  
**LARGE WHITE GLAZED ANHUA DRAGON CHARGER, GUANGXU MARK**

The shallow circular plate covered with white glaze, the base with six-character Guangxu mark, the unglazed foot ring reveals the buff ware. D 33 cm

Provenance: Waddington's Toronto, 18 June 2010, Lot 290.

\$3,000 - \$4,000

**Lot 274**  
**明 道教仙人铜立像**  
**LARGE STANDING BRONZE FIGURE OF A DAOIST SAGE, MING**

A standing bronze figure of Daoist sage with ancient long robe, and tall hat standing on a four-leg stand. H 55 cm

\$2,000 - \$3,000



**Lot 275**  
**创汇期 瓷板硬木插屏**  
**FAMILLE ROSE FIGURAL PANEL AND STAND, CHUANGHUI**

The porcelain panel of rectangular form, delicately painted with four figures standing, fishing and chatting within a landscape scene with a willow tree, the porcelain screen inset within a pierced wooden frame. Porcelain panel: 25\*17.5cm, Total Height: 60cm

\$400 - \$600

**Lot 276**  
**二十世纪 各式木座一组**  
**24 ASSORTED CHINESE WOOD STANDS, 20TH CENTURY**

a group of 24 wood stands in different forms.

\$400 - \$600



**Lot 277**

**青花加彩描金玉壶春瓶 《大清光绪年制》**

**BLUE & WHITE PEAR SHAPED VASE W/ STAND, GUANGXU M. & P.**

Of baluster form rising from a straight foot to a waisted neck, the body decorated with bamboo and scholar's rock, the top mounted with a silver mouth, the base with six-character Guangxu mark, accompanied with a fitted wood stand. H 33 cm

\$5,000 - \$7,000



**Lot 278**

**嵌玉木盖盒**

**JADE INSERT WOOD BOX WITH COVER**

Wood box with loose jade stone set in middle. The stone of a pale celadon tone with some russet inclusions depicts a crane carrying lingzhi with its beak. 11.5\*9cm

\$500 - \$800



**Lot 279**

**白玉把件**

**JADE CARVED BOYS**

stone of an even white tone, depicts two Chinese boys resting. 4.5\*4.5cm

\$500 - \$800



**Lot 280**

**玉璧**

**JADE BI**

The bi is carved in high relief with archaic mystical patterns, the stone of a yellowish-beige tone with some inclusions. D:5.5cm

\$500 - \$800



**Lot 281**  
**玉山子带座**  
**JADE SCHOLAR'S ROCK WITH STAND**

of an even pale celadon tone with some icy and russet inclusions, the composition of the horizontally oriented jade resembles a mountainscape, accompanied with a fitted wooden stand. 7\*12.5cm

\$500 - \$800



**Lot 282**  
**翡翠牌带座**  
**CHINESE JADEITE PLAQUE, WITH STAND**

of rectangular form, the stone of icy-green jadeite, carved with archaic mystical pattern. 5.5\*3cm

\$500 - \$800



**Lot 283**  
**青玉把件**  
**CELADON JADE CARVING TOGGLE**

Of an even celadon tone, depicts pine tree, prunus and bamboo branches. 4.5\*4cm

\$500 - \$800



**Lot 284**  
**白釉刻花碗《大清乾隆年制》款**  
**WHITE GLAZE BOWL, QIANLONG MARK AND PERIOD**

of rounded form, decorated with archaic patterns on the exterior, covered in a lustrous white glaze, the base with six-character Qianlong mark and of the period. D:16cm H:7cm

\$5,000 - \$8,000



**Lot 285**  
**白玉大象带座**  
**WHITE JADE ELEPHANT CARVING, WITH STAND**

of an even pale celadon tone, the caparisoned animal is finely carved standing foursquare with its head turned slightly to one side. Its wrinkled skin, saddle, tasseled side cloth, and facial details are naturalistically rendered, accompanied with a fitted wooden stand. 8\*5\*5.5cm.

\$2,000 - \$3,000



**Lot 286**  
**带皮玉牌**  
**JADE PLAQUE**

of a pale celadon tone with some russet inclusions, the plaque depicts a Chinese boy under a pine tree on one side, depicts archaic cloud pattern and auspicious characters on the other side. 6.5\*3.5cm

\$800 - \$1,200



**Lot 287**  
**带皮扳指**  
**JADE ARCHER'S RING**

stone of a pale celadon tone with some russet inclusions, the ring is decorated with archaic patterns on top. D:3.5cm

\$800 - \$1,200



**Lot 288**  
**带皮翎管**  
**JADE HAT FINIAL**

Of tubular form, the jade of pale white tone suffused with brownish inclusions. 7.5\*1.5cm

\$800 - \$1,200



**Lot 289**  
**二十世纪 越黄官皮箱**  
**HUANGHUALI SEAL CHEST BOX, 20TH CENTURY**

One twentieth century huanghuali seal chest, comprising a top compartment with hinged cover, and doors at the front that open to reveal five drawers of varying size, the corners mounted with brass hardware and the sides set with brass handles, 30.5 cm x 31.5 cm x 23 cm

\$400 - \$600

# TERMS & CONDITIONS

## STUNNING ARTS GALLERY AND AUCTION INC AS AGENT

The lots listed in this catalog will be offered by Stunning Arts Gallery and Auction Inc as owner or as agent for consignor(s) subject to the following terms and conditions. By bidding at auction you agree to be bound by these Conditions of Sale.

### BEFORE THE AUCTION

Prospective buyers are strongly advised to personally examine any property in which they are interested before the auction takes place. All lots are sold "AS IS" and without recourse and neither Stunning Arts Gallery and Auction Inc nor its consignor(s) makes any warranties or representations, express or implied with respect to such lots. No statement, whether written or oral, and whether made in catalog, or in supplements to the catalog, an advertisement, a bill of sale, a saleroom posting or announcement, the remarks of an auctioneer, or otherwise, shall be deemed to create any warranty, representation or assumption of liability. It is the responsibility of prospective purchasers to inspect or have inspected each lot upon which they wish to bid, relying upon their own advisers, and to bid accordingly.

### BIDDING IN THE SALE

Refusal of Admission Stunning Arts Gallery and Auction Inc has the right, at our complete discretion, to refuse admission to the premises or participation in any auction and to reject any bid.

#### Registration before Bidding

A prospective buyer must complete and sign a registration form and provide identification before bidding. We require bank or other financial references.

#### Bidding as Principal

To bid in person, the bidder will need to register for and collect a numbered paddle before the auction begins. Proof of identity will be required. Should you be the successful buyer of a lot, please ensure that your paddle can be seen by the auctioneer and that it is your number that is called out. All lots sold will be invoiced to the name and address in which the paddle has been registered and cannot be transferred to other names and addresses. When making a bid, a bidder is accepting personal liability to pay the purchase price, including the buyer's premium, all applicable taxes and all other applicable charges.

#### Absentee Bids

If the bidder cannot attend the auction, we will be happy to execute written bids on your behalf. Absentee bids in writing must be submitted to Stunning Arts Gallery and Auction Inc at least 24 hours prior to the sale by letter or fax. In the event of identical bids, the earliest received will take precedence.

#### Reserves

Each lot may be subject to an unpublished reserve which may be changed at any time by agreement between the auctioneer and the consignor.

#### Auctioneer's Discretion

The auctioneer has the right at his or her absolute and sole discretion to refuse any bid, to advance the bidding in such a manner as he or she may decide, to withdraw any lot, and in the case of error or dispute, and whether during or after the sale, to determine the successful bidder, to continue the bidding, to cancel the sale or to re-offer and resell the item in dispute. If any dispute arises after the sale, our sale record is conclusive.

#### Successful Bid

The highest bidder acknowledged by the auctioneer will be the purchaser. In the case of a tie bid, the winning bidder will be determined by the auctioneer at his or her sole discretion. In the event of a dispute between bidders, the auctioneer has final discretion to determine the successful bidder or to re-offer the lot in dispute.

### AFTER THE SALE

#### Buyer's Premium

In addition to the hammer price, the buyer agrees to pay Stunning

Arts Gallery and Auction Inc a buyer's premium and the applicable sales tax added to the final total. Each lot sold is subject to a premium of 20% of the successful bid price of each lot up to and including \$50,000 and 18% on any amount in excess of \$50,000 as part of the purchase price. Online bidding is subject to a 23% buyers premium.

#### Deposit

The contact information provided by the purchase must be accurate and true. The auctioneer reserves the right to request a deposit to be provided before bidding and will be used against any and all purchases made at the auction.

#### Taxes

Unless exempted by law, the buyer is required to pay HST on the total purchase price including buyer's premium. For international buyers, taxes are not applicable when purchases are shipped out of country. Items shipped out of Ontario, the buyer is required to pay taxes as per the tax status of that province, whether is HST or GST.

#### Payment

Immediately after the purchase of a lot, the buyer shall pay or undertake to the satisfaction of the auctioneer with respect to payment of the whole or any part of the purchase price requested by the auctioneer, failing which the auctioneer in his sole discretion may cancel the sale, with or without re-offering the item for sale.

The buyer shall pay for all lots within 7 business days from the date of the sale, after which a late charge of 2% per month on the total invoice may be incurred or the auctioneer, in his sole discretion, may cancel the sale. The buyer shall not become the owner of the lot until paid for in full. Items must be removed within 10 days from the date of sale, after which storage charges may be incurred.

Each lot purchased, unless the sale is cancelled as above, shall be held by the auctioneer at his premises or at a public warehouse at the sole risk of the buyer until fully paid for and take away.

Payment for purchases must be by cash, INTERAC direct debit (Canadian clients in person only), certified cheque (U.S. and Overseas not applicable), bank draft, electronic transfer (fee applies), and VISA or MASTER or AMERICAN EXPRESS card.

Should the item not be paid for within the time limit stated, the auctioneer, without limitation of the rights of the consignor and the auctioneer against the buyer, may resell any of the articles affected.

### SHIPPING

Shipping is provided at the buyers' expense. Stunning Arts Gallery will provide a list of shippers. The purchased items will be released with the buyers' written consent and until payment has been made in full. Shipping, packing and handling is at the entire risk of the buyer. SAG will have no liability of any loss or damage to such items.

## 竞投出价表 ABSENTEE/TELEPHONE BIDDING FORM

表格应以墨水笔填写，并电邮，邮寄或传真至本公司

FORMS SHOULD BE COMPLETED IN INK AND EMAILED, MAILED, OR FAXED TO THE AUCTION HOUSE

Name: 名字:				Telephone	Absentee
Phone: 联系电话:		Email: 电子邮件:			
Address: 地址:					
City: 城市:		Province: 省:		Postal Code: 邮编:	
Credit Card Number: 信用卡号码:				Expiry Date: 到期日期:	
Name on Card: 持卡人姓名:				CVV: 卡后三位安全码:	
Billing Address (if different): 账单邮寄地址:					

### IMPORTANT 重要事项

Please note that the execution of written and telephone bids is offered as an additional service for no extra charge, and at the bidder's risk. It is undertaken subject to Stunning Arts' other commitments at the time of auction, Stunning Arts, therefore cannot accept liability for failure to place such bids, whether through negligence or otherwise. 请注意书面及电话竞投是免费提供之附加服务，风险由竞投人承担，而该等服务会在本公司于拍卖时其他承诺之限下进行；因此，无论是由于疏忽或其他原因引致，本公司无需就未能做出该竞投承担责任。

NUMBER 编号	DESCRIPTION 名称	MAXIMUM BID 最高竞投价
		CAD\$
		CAD\$
		CAD\$
		CAD\$
		CAD\$
		CAD\$
		CAD\$

### DEPOSIT 押金

All absentee bidder and telephone bidder are requested by Stunning Arts to deliver to Stunning Arts a deposit of CAD\$2,000 or such higher amount as may be determined by Stunning Arts, and any financial references, guarantees and/or such other security as Stunning Arts may require in its absolute discretion as security for the bid. 本公司可要求电话竞拍者以及最高单价竞拍者完成预先登记程序及交付本公司 2,000 加币或其他由本公司决定之更大金额的定金及任何财务状况证明，担保或/及其他由本公司可全权酌情决定要求的抵押作为参加本公司竞投的保障。

The contract between the buyer and the seller is concluded on the striking of the auctioneer's hammer, and payment of the purchase price for any lot and any buyer's expenses is due 7 business days after the conclusion of the auction. 买家及卖家之合约于拍卖官击锤时订立，而阁下作为买家必须于拍卖会结束后 7 个工作日支付拍品之买入价及任何买家费用。

### TELEPHONE NUMBER DURING THE SALE 拍卖联络电话:

\_\_\_\_\_

#### FOR WRITTEN/FIXED BIDS 书面竞投

- Bids will be executed for the lowest price as is permitted by other bids or reserves. 竞投将以尽可能低之价格进行
- Where appropriate your written bids will be rounded down to the nearest amount consistent with the auctioneer's bidding increments. 如适当时，阁下之书面竞投价将会被大概调整至最接近拍卖官递增之竞投金额

#### FOR TELEPHONE BIDS 电话竞投

- Please clearly specify the telephone number on which you may be reached at the time of the sale, including the country code. We will call you from the saleroom shortly before your lot is offered. 请清楚注明于拍卖期间可联络阁下之电话号码，包括国家号码。我们会于阁下之拍品竞投前致电给阁下。

I agree that I am bound by the Condition of Business for Buyer and the Authenticity Guarantee which are published in the catalogue for the sale on purchases at auction that I make. If any bid is successful, I agree that all sales are subjected to a 20% buyer's premium added to the hammer price, 18% on any bids over CAD \$ 50,000. 本人同意接受图册内列明之给卖家的规则及保证书，是次拍卖会上的一切交易均受以上条款所约束。若竞投成功，本人愿意支付附加成交价之上的 20% 买家佣金，或以 50,000 加币以上成交的拍品之 18% 的买家佣金。

I consent to the use of this information and any other information obtained by Stunning Arts Gallery and Auction in accordance with the Guide for Absentee Bidders and Conditions of Business. I am aware that all telephone bid lines may be recorded. 本人同意 Stunning Arts Gallery and Auction 使用本人资料及根据给委托竞投者指引与给买家业务规则内而取得至其他资料。本人明白所有电话竞投会被录音。

SIGNED 签署 \_\_\_\_\_

DATE 日期 \_\_\_\_\_



長城畫廊



Stunning Arts Gallery  
8333 Kennedy Rd., Unit 28-31 (P1)  
Markham ON L3R 1J5 朝暉坊  
Phone/Fax: 905-604-8288  
Email: [stunningartsgallery@gmail.com](mailto:stunningartsgallery@gmail.com)  
[www.stunningartsgallery.com](http://www.stunningartsgallery.com)