



STUNNING ARTS GALLERY & AUCTION

夏季亚洲艺术拍卖

SUMMER ASIAN ART AUCTION

2019/08/08 星期四 19:00 EST

是園瑞瑞大年花四九事之佳地而善中三月廿五日
今日幸也以此致誌廿二時三十分在嘉德拍賣行



可郡德有









Lot 001
晚清 酸枝云石台桌椅五件套
SUANZHI TABLE WITH FOUR STOOLS, LATE QING

The group comprising of five hardwood furniture: a circular table with marble-inlaid top and covered with glass and four marble-inlaid round stools. Table Diam: 83cm H: 80cm Chairs (x4) D: 35cm H: 45cm

CA\$1,500 - CA\$2,000

Lot 002
晚清 酸枝玫瑰椅连几三件套
TWO SUANZHI SPRINDLEBACK ARMCHAIRS
WITH TABLE, LATE QING

The group comprising of two chairs and a table, the square form seat framed by a straight crest rail above gently curved spindles, the rear stiles joined to the straight armrest supported by shorter curved spindles, accompanied with a side table. Chair: 79cm x 52.5cm x 46cm Table: 69cm x 41cm x 41.5cm

CA\$1,000 - CA\$1,500



Lot 003
二十世纪 红木翘头案
RED WOOD ALTAR TABLE, 20TH C.

The single panel floating top and frame of attractively wood, over an associated base with carved grapes apron, all supported with four legs joined by a panel with oval shape cutout on the side, accompanied with two drawers. 134cm x 111cm x 50.5cm

CA\$600 - CA\$1,000



Lot 004
晚清 酸枝嵌云石圆凳一对
GROUP OF TWO MARBLE INLAD SUANZHI STOOLS,
LATE QING

The group comprising of two circular shape marble-inlaid stools with a finely decorated apron. Diam: 34.5cm H: 44cm

CA\$200 - CA\$300



Lot 005
西式硬木小桌
WESTERN HARDWOOD TABLE

The top panel of symmetrical lobed form connected with two feet and a central stretcher. 101.3cm x 51cm x 76.5cm

CA\$300 - CA\$500





Lot 006
清 榆木长案
ELMWOOD LONG TABLE, QING

Of rectangular form, the top with a single-board floating panel set in a molded edge frame, the side with pierced beast figures, all supported on four rectangular feet. 52cm x 33.7cm x 79.5cm

CA\$200 - CA\$300



Lot 007
云石花几一对
PAIR OF MARBLE INLAID WOOD STANDS

Each of square form top the side carved with scrolling patterns, supported on four slim legs connected with a stretcher. 107.5cm x 36cm x 33cm

CA\$500 - CA\$800



Lot 008
民国 酸枝圈椅三件套
SUANZHI HORSESHOE BACK ARMCHAIRS SET, REPUBLIC P.

The group comprising of two horseshoe back chairs and a small side table. Chairs: 69cm x 45.5cm x 101cm each; table: 44.5cm x 75cm x 34.8cm

CA\$1,500 - CA\$2,000



Lot 009
晚清 酸枝长椅
SUANZHI LONG CHAIR, LATE QING

The back of the key-fret pattern, all supported on four curved legs attached with four stretchers. 180cm x 53cm x 88cm

CA\$2,000 - CA\$3,000



Lot 010
民国 酸枝四方长几嵌瓷板
PORCELAIN PANEL INLAID SUANZHI TABLE, REPUBLIC P.

The rectangular floating panel top inlaid with a famille rose porcelain panel, depicting two peacock, birds, cranes, mandarine duck and poney, the table supported on four slim feet. 86cm x 54.5cm x 76.5cm

CA\$1,000 - CA\$1,500



Lot 011
二十世纪 硬木家具套一组八件
EIGHT PIECES HARDWOOD LIVING ROOM SET, 20TH C.

The group comprising of 8 pieces, including a sofa, two-handled chairs, and two chairs with no handles, including three tables. Sofa:78cm x 51cm x 105.5cm; chair with handle: 101.5cm x 60.5cm x 49.5cm; chair:43cm x 102cm x 47cm; table: 101cm x 50cm x 52cm; side table: 51cm x 50.5cm x 51cm

CA\$1,500 - CA\$2,000

Lot 012
民国 镶云石螺钿硬木圆凳对
PAIR OF MARBLE & RADEN INSET HARDWOOD CHAIRS REPUBLICAN P.

The group comprising of two hardwood stools, each modelled in the form of a barrel, the circular top resting on a shaped apron extending into four curved legs bulging near the centre of the stool. Diam:31cm H:47cm

CA\$300 - CA\$500



Lot 013
晚清 皮箱
BIG HINGED BOX, LATE QING

Of rectangular form, accompanied with a hinged cover, the front embellished with a diamond shape metal lock plate set with a lobed ruyi-shaped clasp, the sides flanked by a pair of 'C' - shaped metal loop handle suspending from cross shape roundels. 76.5cm x 55cm x 38cm

CA\$100 - CA\$200



Lot 014
晚清 花几一组两件
GROUP OF TWO SUANZHI STANDS, LATE QING

The group comprising of two stands, each with circular top supported on four elegantly curved cabriole legs connecting with a shaped stretcher. H: 91.3cm; 61.5cm

CA\$600 - CA\$800



Lot 015

**民国 花鸟小梅瓶 《洪宪年制》款
FAMILLE ROSE MEI VASE, HONGXIAN MARK, REPUBLICAN PERIOD**

Of Baluster form rising from a spread foot to a waisted neck and everted rim, the body decorated with poney, bird, bat and scholar's rock, the base with four-character Hongxian mark. H:22cm

CA\$500 - CA\$800



Lot 016

**元 四系罐
POTTERY HANDLED JAR, YUAN**

Of baluster form rising to a waisted neck and an everted rim, the shoulder flanked with three loop ears, a curved handle and a spout, the body covered with greenish-blue glaze thinner to the base reveals the buffware. H:20cm

CA\$500 - CA\$800



Lot 017

**晚清 红釉盘口水洗
RED GLAZE WATERPOT, LATE QING**

Of compressed globular form, the waterpot covered with rich red glaze, the interior, and base covered with crackles, the unglazed foot-ring reveals the buffware. D: 17.5cm

CA\$300 - CA\$500



Lot 018

**晚清 蓝釉水钵
BLUE GLAZE WATER-POT, LATE QING**

Of tapering-globular form to an inverted rim, the body covered with dark blue glaze, the interior glazed in white, the base and interior center unglazed and reveals the buffware, D:16cm H:7cm

CA\$300 - CA\$500



Lot 019

**蓝地矾红福寿碗 《大清光绪年制》款
BLUE-GROUND IRON-RED BOWL, GUANGXU MARK**

The slightly conical form bowl decorated on the exterior with iron red bats and 'fu' characters reserved on a dark blue ground, the base with six-character Guangxu mark. D: 15.5cm H:7cm

CA\$300 - CA\$500



Lot 020
晚清 浅绛彩将军罐
LARGE FAMILLE ROSE
JAR, LATE QING

Of well potted baluster form, boldly painted with bird and peony, with poem, accompanied with a fitted cover. H: 42cm

CA\$500 - CA\$800



Lot 021
晚清 熨斗一对
GROUP OF TWO IRONS, LATE QING

The group comprising of two irons, one of circular form, the handle attached with a celadon jade thumb ring 20.5cm x 9.9cm x 5cm; the other of square form, decorated with enameled bird and poney 11.1cm x 16.7cm x 4cm

CA\$200 - CA\$300

Lot 022
珊瑚项链
CHINESE CORAL NECKLACE

The centre panel decorated with coral in various shape, connecting with two strings of coral beads. Approx. perimeter 44cm

CA\$500 - CA\$800



Lot 023
翠玉 18K 金项链
CELADON JADE AND 18K
GOLD NECKLACE

The necklace comprising of 18 tubular beads connecting with gold chain, the stone of dark green tone. Approx. perimeter: 84cm

CA\$1,500 - CA\$2,000



Lot 024
清 太上老君、达摩石湾像一组
GROUP OF TWO SHIWAN PORCELAIN FIGURES

The group comprising of two figures, one depicting a sitting figure of Taishang Laojun with a monkey, and a pot all above the scholar's rock, the other depicting Dharma with eyes open big and big beard. H: 23cm;21.5cm

CA\$500 - CA\$800



Lot 025
清 铁拐李石湾立像
GLAZED SHIWAN
FIGURE OF TIE GUAI LI

Depicting a standing figure, wearing a long robe open at the chest showing dark brown body, the face with eyes open big and mouth open within a long beard, the rope glazed in purple and green tone. H: 23.5cm

CA\$300 - CA\$500



Lot 026

陶冷月 (1895-1985) 山水小品一对 连框 水墨纸本
TAO LENGYUE (1895-1985) LANDSCAPE.

The lot comprising of two landscape paintings, both depicting trees and scholar's rock, ink on paper, both signed by the artist with one seal, framed. 36cm x 22cm each

CA\$1,500 - CA\$2,000

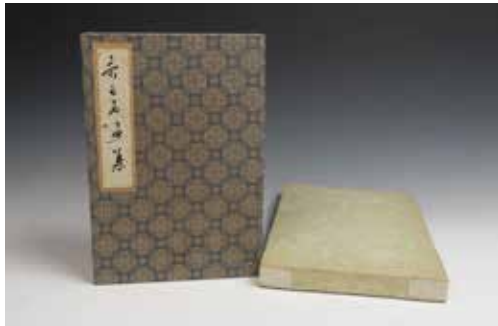
Lot 027

齐白石 (1864-1957) 木板水印二十二开册页 设色纸本

QI BAISHI (1864-1957) WOODBLOCK PRINT ALBUM

Depicting flowers, fruits, animals, and vegetables, ink, and color on paper, accompanied by a box. Box: 22cm x 32.2cm x 2.6cm

CA\$1,500 - CA\$2,000



Lot 028

查士标 (1615-1698) 款 山水 水墨纸本 挂轴
AFTER ZHA SHIBIAO (1615-1698) LANDSCAPE

Depicting landscape, ink on paper, signed by the artist with one seal. hanging scroll. 110cm x 35.5cm

CA\$5,000 - CA\$7,000



Lot 029

贾又福 (1941-) 多福多寿 设色纸本
JIA YOUFU (1941-) FISH AND WATERMELON

Depicting a fish and watermelon, ink and color on paper, titled and signed by the artist with two artist's seals. 47.4cm x 44.5cm

CA\$2,500 - CA\$3,000



Lot 030

田桓 (1893-1982) 书法 水墨纸本 挂轴
TIAN HUAN (1893-1982) CALLIGRAPHY

Calligraphy, signed by the artist, mounted. 92cm x 33.5cm

CA\$1,500 - CA\$2,000



Lot 031
十九世纪 双耳百鹿尊 《大清乾隆年制》款
LARGE FAMILLE ROSE VASE, QIANLONG MARK, 19TH C.

Robustly potted of archaic hu form, the generously rounded sides sweeping up to a tapering neck flanked by a pair of iron-red handles modeled in the form of dragons, the body finely painted with a continuous scene depicting a herd of deer in a verdant mountainous landscape, the base with six-character Qianlong mark. H:38cm

CA\$5,000 - CA\$8,000

Lot 032
十九世纪 豇豆红水盂太白尊 《大清康熙年制》款
PEACHBLOOM BEEHIVE WATERPOT, KANGXI MARK, 19TH C.

The slightly tapering sides rising from a countersunk base to a rounded shoulder surmounted by a short neck and lipped mouth-rim finely incised with dragon roundels, the base with a six-character mark in underglaze blue. D: 12.8cm

CA\$500 - CA\$800



Lot 033
清晚期 水仙青花盘
BLUE AND WHITE NARCISSUS BOWL, LATE QING

The shallow planter of four-lobed form, the exterior decorated with interlaced floral design, the mouth rim painted with repeated blue patterns, all supported on four legs. 23.3cm x 17.9cm x 4.5cm

CA\$300 - CA\$500



Lot 034
清 乌金釉赏瓶一组两件 (底有洞)
GROUP OF TWO BLACK GLAZE VASES (DRILLED), QING

One of cylindrical form with a waisted neck and everted rim, the other of baluster form with a waisted neck and everted rim, both covered in black glaze, the base drilled with a hole. H:25cm; 29.5cm

CA\$300 - CA\$500



Lot 035
民国 黄地三彩赏瓶一对
PAIR OF YELLOW-GROUND GREEN & AUBERGINE ENAMELLED VASES, REPUBLIC P.

Each of diamond shape body rising to a waisted neck and an everted mouth, the body decorated with bajixiang emblems, the unglazed base ring reveals the buffware. H: 20.5cm

CA\$500 - CA\$800



Lot 036

青花、粉彩小碟一组两件 连盒

GROUP OF FAMILLE-ROSE, BLUE & WHITE PLATES, W/ BOX

The group comprising of two plates, one interior decorated with blue and white poney, the exterior with lotus, chrysanthemum, and poney against the brown ground; The other interior decorated with famille-rose and iron-red figures. D: 12.3cm; 13.1cm

CA\$300 - CA\$500

Lot 037

刺绣挂轴

EMBROIDERY HANGING SCREEN

Depicting a bird standing on prunus blossom branches, titled and with one artist's seal, mounted in a hanging scroll. 91.5cm x 23.5cm

CA\$300 - CA\$500



Lot 038

翡翠镯子

JADEITE BANGLE

The jadeite bangle of slightly transparent tone with light yellow and russet tone. Outer Diam: 6.7cm Inner Diam: 5.7cm; W: 1.1cm

CA\$500 - CA\$800



Lot 039

青釉暗刻八卦纹琮瓶 《大清光緒年制》款

CELADON GLAZE CONG VASE, GUANG XU MARK

Modeled after an archaic jade cong, each long edge of the square-sectioned body with six raised horizontal bands within a raised rectangular frame, all supported on a short foot and surmounted by a gently tapering neck, covered overall with an unctuous celadon glaze, the base with six-character Guangxu mark. H: 30.5cm

CA\$5,000 - CA\$8,000



Lot 040
蓝釉赏瓶 《大清光绪年制》款
BLUE GLAZE VASE, GUANG XU MARK

Of globular form rising to a waisted neck and an everted rim, the body covered with blue glaze, the base with six-character Guangxu mark. H:37.5cm

CA\$1,000 - CA\$1,500



Lot 041
康熙 出口青花博古纹冬瓜瓶对 带红木盖
PAIR OF EXPORT BLUE AND WHITE JARS W/ COVER, KANGXI P.

Each of tapering ovoid form. covered with a hundred antique pattern and floral patterns, the unglazed foot-ring reveals the buffware, accompanied with a fitted wooden cover. H:24.5cm

CA\$4,000 - CA\$7,000



Lot 042
民国 黄地龙纹赏瓶 (有修补)
YELLOW DRAGON VASE, REPUBLIC PERIOD (RESTORED)

Of lightly compressed globular body to an everted rim, the exterior decorated with flying dragon in pursuit of a flaming pearl, all against a yellow ground. H: 39cm

CA\$300 - CA\$500



Lot 043
民国 粉彩赏瓶 《大清乾隆年制》款
LANDSCAPE VASE, QIANLONG MARK, REPUBLIC P.

Of cylindrical form rising to a waisted neck and an everted rim, the body decorated with a landscape scene, the base with six-character Qianlong mark. H: 32cm

CA\$4,000 - CA\$6,000



Lot 044
十八 / 十九世纪 三足双耳铜炉 《宣德年制》款
BRONZE DRAGON CENSER W/ XUANDE MARK, 18/19TH C.

Of compressed globular form, the body decorated with dragon and scrolling cloud, supported on three curved feet, the rim flanked with two loop handles, the base with four-character Xuande mark. H: 14cm

CA\$800 - CA\$1,200



Lot 044A
十九世纪 三足铜香炉 《大明成华》款
TRIPOD BRONZE CENSER, CHENGHUA MARK, 19TH C.

Of globular body form rising to a waisted neck and to an everted rim, all supported on three ball-shaped feet, the base with four-character Chenghua mark. H: 9.3cm

CA\$500 - CA\$800



Lot 045
明 绿松石釉双耳三足炉 连座
TILE-WARE CENSER WITH STAND, MING

Of compressed body supported on three beast legs, the shoulder flanked with two handles, the body covered turquoise glaze, attached with a stand covered in turquoise and red glaze. H:15cm

CA\$300 - CA\$500



Lot 046
暗刻纹龙泉香炉
LONGQUAN CELADON CENSER

Of compressed globular body, supported on three beast head legs, the body decorated with scrolling leaves, covered overall with celadon glaze. H:12.8cm

CA\$500 - CA\$700



Lot 047
民国 粉彩花卉纹碗对 《九江远东》款
PAIR OF FAMILLE ROSE BOWLS, JIUJIANG M.REPUBLIC P.

Each of globular form, the exterior decorated with chrysanthemum and the other decorated with poney, the base with four-characters Jiujiang Yuandong mark. H:7cm
 Diam:16.5cm each

CA\$400 - CA\$600



Lot 048
十九世纪 铜狮印
BRONZE LION SEAL, 19TH C.

Vividly depicted a lion sitting on a square form base. H: 6cm

CA\$300 - CA\$500



Lot 049
菊瓣紫砂壶 《陈顺林制》款
YIXING CHRYSANTHEMUM TEAPOT, CHEN SHUNLIN MARK.

Of cylindrical form, subtly moulded with two rows of narrow lobes radiating from a central band bordering the body, flanked by a short spout and a loop handle on the side, accompanied with a fitted cover, base with four-character Chen Shunlin seal. H: 10cm x 17cm x 10cm

CA\$300 - CA\$500



Lot 050
小紫砂壶 《仲小琴制》款
SMALL YIXING TEAPOT, ZHONG XIAOQIN MARK

Of compressed form resting on three feet, the body flanked with two circle handles and a small spout, the base with four characters Zhongxiaoqin mark. 11.2cm x 8cm x 4.5cm

CA\$600 - CA\$800



Lot 051
钱载 (1708-1793) 款 梅竹图 水墨纸本 挂轴
AFTER QIAN ZAI (1708-1793) PRUNUS AND BAMBOO

Depicting bamboo, prunus blossom and scholar's rock, ink on paper, signed by the artist with two seals, hanging scroll. 89cm x 39.8cm

CA\$1,000 - CA\$1,500



Lot 052
陈淳 (1483-1544) 款 白阳山人墨画 水墨纸本 挂轴
AFTER CHEN CHUN (1483-1544) BAMBOO & SCHOLAR'S ROCK

Depicting bamboo, chrysanthemum, scholar's rock and an animal, ink on paper, signed by the artist with one seal, hanging scroll. 88.5cm x 54cm

CA\$1,000 - CA\$1,500



Lot 053
恽寿平 (1633-1690) 款 牡丹桃
山 设色纸本 挂轴
AFTER YUN SHOUPIN (1633-1690)
PONEY BLOSSOM

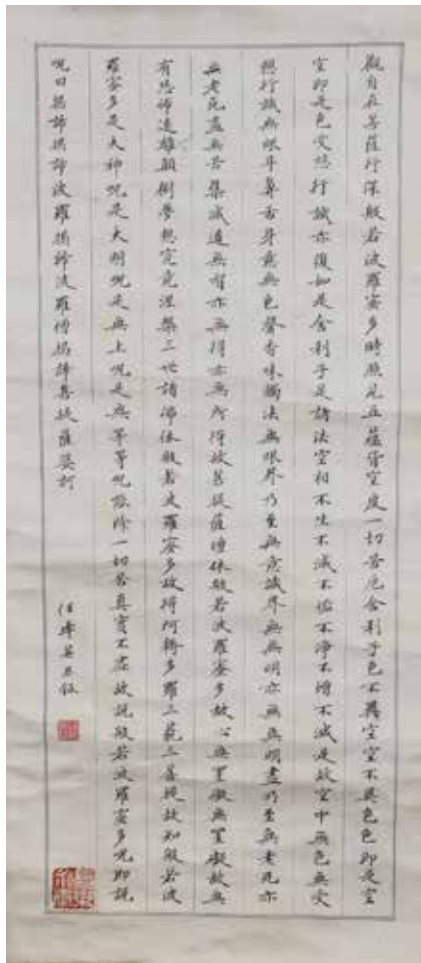
Comprising of calligraphy and painting of poney and, signed by the artist with five artist's seals, ink and color on paper, hanging scroll. 79.5cm x 38.7cm

CA\$1,000 - CA\$1,500

Lot 054
钱禄新 人物 设色纸本 挂轴
QIAN LUXIN, IMMORTAL FIGURES

Depicting two immortal figures, one male and one female, standing on a mountain cliff with a bafulo, with cloud and pine tree, titled and signed by the artist with one seal, ink and color on paper, hanging scroll. 149.5cm x 39.5cm

CA\$300 - CA\$500



Lot 055
任率英 (1911-1989) 心经 水
墨纸本 挂轴
REN SHUAIYIN
(1911 - 1989)
THE HEART
OF PRAJNA
PARAMITA

A calligraphy of the heart of prajna paramita sutra, signed by the artist with two seals, ink on paper, hanging scroll. 63.7cm x 28.5cm

CA\$500 - CA\$800



Lot 056
若瓢 (1905-1976) 钟馗
设色纸本
RUO PIAO (1905-1976)
ZHONGKUI

Depicting Zhong Kui, color and ink on paper, signed by the artist with two seals. 98.5cm x 42.8cm

CA\$300 - CA\$500



Lot 057
十九世纪 路易十八风格高柜
LOUIS XVIII STYLE EUROPEAN CABINET, 19TH C.

Opening with two doors supported on four slim legs, the exterior decorated with gold decorations. 159cm x 36cm x 92cm

CA\$3,000 - CA\$5,000

Lot 058
十九世纪 路易十八风格立柜
LOUIS XVIII STYLE BREAKFRONT SIDES CABINET, 19TH C

Of overall a rectangular form, opening with three doors, exterior decorated with gold decorations. 137cm x 119cm x 38.5cm

CA\$3,000 - CA\$5,000



Lot 059
清 竹雕纹纯银餐具一套九件
SET OF 9 CHINESE SILVER BAMBOO TABLEWARES, QING

The group comprising of nine silverwares, including a teapot, a sugar container, a milk/cream container and six cups. Highest: 14.7cm Total Weight approx. 1320 grams

CA\$1,500-CA\$2,000

Lot 060
清 纯银寿星公两件
SET OF 2 CHINESE SILVER SHOU LAO FIGURES, QING

The group comprising of two silver shoulao figures. H: 30cm; 21cm Total weight approx. 668 grams

CA\$2,000 - CA\$3,000



Lot 061
清 纯银高脚托盘四件
SET OF 4 CHINESE SILVER TRAYS, QING

The group comprising of four silver high foot trays. H: 9.5cm each; Total Weight approx: 722 grams

CA\$500 - CA\$800





Lot 062
清 纯银托盘小碗配勺十二件
SET OF 12 CHINESE SILVER TEAWARES, QING

The group comprising of four sets and a total of twelve pieces of silver bowls, trays, and spoons. Cup H: 5.5cm Total weight approx. 610 grams.

CA\$600 - CA\$1,000



Lot 063
清 纯银酒具七件
SET OF 7 CHINESE SILVER WINEWARES, QING

The group comprising of a total of seven pieces silver wares including six cups and one pot. Highest Height: 16.5cm; total weight approx: 778 grams

CA\$600 - CA\$1,000



Lot 064
清 纯银餐具、酒杯、茶杯连盖各十套
SET OF 70 CHINESE SILVER TABLEWARES, QING

The group comprising of total seventy pieces silver wares including 10 sets of the teacup with cover, 10 sets of chopsticks, 10 sets of teawares and 10 sets of chopsticks stand. Total Weight approx. 2787 grams

CA\$2,000 - CA\$3,000



Lot 065
清 西洋银器茶壶三件
SET OF 3 EUROPEAN SILVER TEAWARES, QING

The group comprising of three western style silver teawares, including a teapot, a milk/cream container and a sugar container. Highest H: 24.5cm Total Weight approx. 1433 grams.

CA\$200 - CA\$300



Lot 066
清 纯银茶杯两件、酒杯六件、盅两件
SET OF 10 CHINESE SILVER TABLEWARES, QING

The group comprising of a total of ten silver pieces, including two teacups, six wine cups, and two bowls. Total Weight approx: 1049 grams

CA\$1,000 - CA\$1,500



Lot 067
清 纯银餐具共五十四件
SET OF 54 CHINESE SILVER TABLEWARES, QING

The group comprising of total fifty-four silver pieces, including spoons, and knives. Total weight approx. 1839 grams.

CA\$500 - CA\$800



Lot 067A
清 百宝嵌挂屏
JADE AND HARDSTONE INLAID HANGING PANEL, QING

The hanging panel inlaid with various hardstone and jade depicting antique items, the top with two characters (鸿 禧), all against a black lacquered wood ground. 75cm x 126cm x 3cm

CA\$3,000 - CA\$5,000

Lot 067B
明末清初 如意纹螭龙玉璧连座
JADE CHILONG BI DISC W/ STAND, LATE MING TO QING

Carved in high relief to one side with a chilong, the other side decorated with ruyi pattern, of celadon tone with russet inclusion, accompanied with a stand. Diam: 6.3cm; center aperture diam: 1.4cm

CA\$1,000 - CA\$1,500



Lot 067C
明末清初 谷纹螭龙玉璧连座
JADE CHILONG BI DISC W/ STAND, LATE MING TO QING

Carved in low relief to one side with three sinuous chilong encircling the center aperture, the other side decorated with grain pattern, the stone of celadon tone with some russet inclusion, accompanied with a stand. Diam: 6.7cm Inner diam: 1.7cm

CA\$800 - CA\$1,200

Lot 067D
十七至十八世纪 玉把件
JADE CARVING, 17/18TH C.

Carved in a form of an abstract dragon, the body decorated with scrolling patterns, the stone of greyish green tone with some black inclusions. 14cm x 2.9cm x 0.5cm

CA\$500 - CA\$800



Lot 068

**晚清 刺绣挂屏
EMBROIDERY HANGING SCREEN, LATE
QING**

Depicting landscape with trees, pavillion ,
bridge, two boats on river, framed. 137cm
x 40.2cm with frame

CA\$200 - CA\$300



Lot 069

刺绣一组两幅 连酸枝框

**GROUP OF TWO EMBROIDERY PIECES WITH
SUANZHI FRAMES**

The group comprising of two embroidery pieces,
depicting chrysanthemum, willow, eagle, and crane.
framed. 48.7cm x 31.7cm each

CA\$400 - CA\$600



Lot 070

晚清 酸枝框一对

GROUP OF TWO SUANZHI FRAMES, LATE QING

The frame decorated with bamboo carved in low-relief,
attached with a bronze hinged hanger. 68.2cm x 58.5cm
x 1.7cm

CA\$200 - CA\$300



Lot 071

**余文襄 (1910-1993) 雪景山水瓷板挂屏
YU WENXIANG (1910-1993) PORCELAIN PANEL**

Depicting a winter landscape scene with architecture and mountain
and trees, titled and signed by the artist with two seals, framed.
28cm x 39cm panel only

CA\$4,000 - CA\$6,000





Lot 072
十九世纪 浅绛彩人物瓷板
QIAN JIANG SCHOOL FIGURE PORCELAIN PANEL, 19TH C.

Of rectangular form, the panel decorated with thirteen figures with a landscape scene with scholar's rock and pine trees and mountains. 25.3cm x 39cm x 0.8cm

CA\$1,500 - CA\$2,000



Lot 073
民国 薄胎粉彩瓶对 连座 王大凡款
PAIR OF FAMILLE ROSE FIGURE VASES WITH STAND, REPUBLICAN P.

Each of baluster form, the body decorated with The Romance of Western Chamber story scene, accompanied with a fitted stand. H: 12cm without stand

CA\$8,000 - CA\$12,000



Lot 074
1973年 粉彩蝉碟 《景德镇瓷器厂制》李明亮款
REPUBLIC FAMILLE ROSE PLATE, 1973

The flat plate decorated with cicada resting on a branch painted with an iron red tone, titled and signed by the factory artist Li Mingliang with a seal, the reverse dated 1973. Diam: 23.5cm

CA\$300 - CA\$500



Lot 075
民国 紫檀笔筒
ZITAN WOOD BRUSH POT, REPUBLICAN P.

Of irregular form, the body decorated with orchid, along the natural color. H: 15.4cm

CA\$500 - CA\$800



Lot 076
灵璧赏石笔架山 连座
LINGBI SCHOLAR'S ROCK BRUSH REST, W/STAND

A lingbi scholar's rock, the stone formed in three three mountain peaks, accompanied with a fitted wood stand. 15.5cm x 8.5cm x 5.5cm Weight: 351 grams

CA\$600 - CA\$1,000



Lot 077
赏石 连座
BROWN SCHOLAR'S ROCK, W/STAND

A yellow, russet, creamy white, and dark brown scholar's rock, with a fitted wood stand. 10cm x 12.5cm x 4cm. weight: 870 grams

CA\$100 - CA\$200



Lot 078
民国 粉彩坐狮一对
PAIR OF FAMILLE ROSE LIONS, REPUBLICAN P.

Each vividly potted as a seated lion, seating on a brown stand, the lion glazed in dark blue, green and yellow, the unglazed base reveals the buffware. H:39.5cm

CA\$600 - CA\$1,000



Lot 079
绿松石仙女像
TURQUOISE LADIES STATUE WITH STAND

Vividly carved as an immortal lady, holding a vase in the right hand with a peacock next to her, the stone of bluish-green tone, with brown inclusions. H: 12.2cm

CA\$500 - CA\$800



Lot 080
清 青白玉鼻烟壶 连座
SNUFF BOTTLE W/ STAND, LATE QING

Of baluster form, the snuff bottle accompanied with a celadon stopper, the stone of greyish brown tone with black inclusions, accompanied with a fitted wood stand. H:5.7cm

CA\$300 - CA\$500



Lot 081
清 玛瑙鼻烟壶
AGATE SNUFF BOTTLE, LATE QING

Of rounded form, the body incised with an elder fishing with a landscape at the background, the reverse incised with lotus leaf and blossom and birds. H:7cm

CA\$200 - CA\$300



Lot 082
清 绿松石鼻烟壶
TURQUOISE SNUFF BOTTLE W/
BOX, QING

Of flattened globular form, the body covered in bluish-green tone, accompanied with a stopper and a fitted box. H: 5.1cm

CA\$2,000 - CA\$3,000



Lot 083
清 白玉人物牌 带座
JADE PLAQUE W/ WOOD STAND,
QING

The jade piece of lobed form carved in low-relief with an elder within a landscape, it is attached to a wooden stand. Jade size: 6.1cm x 5.4cm x 0.7cm H:13cm

CA\$1,000 - CA\$1,500



Lot 084
清 童子玉牌 带座
CARVED JADE PLAQUE W/ WOOD STAND, QING

The jade of circular form, pierced and incised with two children playing with lotus blossom, the stone of celadon tone, accompanied with a fitted wood stand. D:8cm

CA\$600 - CA\$1,000

Lot 085
斗彩花卉纹碗 《大清光绪年制》款
DOUCAI FLORAL BOWL, GUANGXU MARK

Of globular form, the exterior decorated with floral and branches, the base with six-character Guangxu mark, accompanied with a fitted wooden stand. H:5.5cm; D:12.5cm

CA\$2,000 - CA\$3,000





Lot 086
晚清 料器朝珠
PEKING GLASS BEAD COURT NECKLACE, LATE QING

Composed of 108 black glass beads divided by four green glass foutou, the foutou at back connected to a gourd-shaped foutou. Perimeter approx. 117cm

CA\$1,200 - CA\$1,500



Lot 087
十九世纪 五彩棒槌瓶
FAMILLE VERTE ROULEAU VASE, 19TH C.

Of tapering form rising to a waisted neck and an everted rim, the body decorated with panels of the peacock, poney, magpie, and prunus blossom, all against an interlaced floral designed background, the unglazed foot ring reveals the buffware. H: 43cm

CA\$1,000 - CA\$1,500



Lot 088
十九世纪 双象耳衔环三足炉 《石叟》款
DOUBLE ELEPHANT EARS CENSER, SHISOU MARK, 19TH C.

Of globular form, the shoulder attached with two elephant ears attached with a ring, the body decorated with butterfly and repeated patterns, all supported on three conical feet, the base with two-character shisoumark. H: 9.5cm

CA\$300 - CA\$500



Lot 089
十九世纪 小铜炉 《大明宣德年制》款
BRONZE SMALL CENSER, XUANDE MARK, 19TH C.

Of compressed form, the everted rim attached with two handles, the interior carved with dragon surrounding four 'da ming Xuan de' characters, all supported on three conical feet, the base with Xuande mark. H: 4cm Diam: 6.5cm

CA\$300 - CA\$500



Lot 090
十九世纪 仿雄黄料器赏瓶一组两件
GROUP OF TWO PEKING GLASS REALGER VASES, 19TH C.

The group comprising of two Peking glass vases, one of baluster form and the other of tapering form, both covered with red and brown inclusions. H: 20.5cm; 11cm

CA\$300 - CA\$500



Lot 091
十九世纪 料器鸭形水洗
PEKING GLASS DUCK FORM BRUSH WASHER, 19TH C.

The waterpot carved in the form of a duck, the body decorated with scrolling patterns, covered overall in a reddish-brown tone. 10.5cm x 7.5cm x 5.5cm

CA\$300 - CA\$500



Lot 092
十九世纪 青金石贝形鼻烟壶
LAPIS LAZULI SHELL FORM SNUFF BOTTLE, 19TH C.

The snuff bottle potted in the form of a shell, the body decorated with blue lapis and golden flecks, accompanied with a fitted gem-inlaid stopper. 5.5cm x 5cm x 3cm

CA\$800 - CA\$1,200



Lot 093
绞胎撇口碗
TANG STYLE MARBLED BOWL

The slightly tapering form, to a short foot, the bowl covered overall in a spinach green glaze decorated with brown glazed marbled to produce a design of light and dark irregular whorls. H: 3.5cm Diam: 8.4cm

CA\$300 - CA\$500



Lot 094
绞胎三足炉
TANG STYLE MARBLED TRIPOD CENSER

Of slightly compressed globular form, the censer supported with three curved feet, the body covered overall in an orangish-yellow tone, covered with brown glaze marbled to produce a design of light and dark irregular whorls, H: 5.5cm

CA\$300 - CA\$500



Lot 095
十九世纪 法华瓷八仙小瓶
SMALL FAHUA EIGHT IMMORTAL VASE, 19TH C.

A small Fahua vase, of pear-shaped body flanked by a pair of ruyi handles, moulded in low relief with medallions of eight immortals, further decorated with Shou roundels and other auspicious emblems, height 10.5 cm

CA\$300 - CA\$500



Lot 096
十九世纪 窑变釉苹果尊 连座
**FLAMBE GLAZE VASE W/
 STAND, 19TH C.**

The jar of globular form applied overall with a purple-red glaze splashed with lavender-blue and thinning to a mushroom tone around the rim, the base unglazed and reveals the buff ware, accompanied with a fitted stand. H: 8cm

CA\$500 - CA\$800



Lot 097
清 白瓷双耳小瓶
**SMALL WHITE GLAZE
 VASE, QING**

Of globular body rising to an everted rim and supported on a waisted leg to a spreading feet, covered in white glaze with two beast head ears flanked from the body. H: 14cm

CA\$200 - CA\$300



Lot 098
一组三件故宫博物院青铜器复制品
**SET OF 3 PALACE MUSEUM REPRODUCTION ZHOU
 BRONZES**

The group comprising of three replicas of Ancient Bronze in the Collection of Palace Museum, Beijing, including a Dou (30.5cm x 23.5cm), a Zhou (10.7cm x 11.8cm), and a Xu (15.4cm x 28.7cm).

CA\$500 - CA\$700



Lot 099
翡翠龙带钩
JADEITE LONG DRAGON BELT HOOK

The spinach tone stone depicted with a dragon's head forming the hook and facing an undercut and reticulated chilong, the underside with a round knob, the stone of green tone lighter to celadon tone at the hook. L: 14.5cm

CA\$500 - CA\$700



Lot 100
清 蓝晶雕狮子把件
AQUAMARINE CARVED LION PENDANT, QING

Of overall an oval form, the body carved with two chilong facing head to head, the center of coin form, attached with a long robe. 4.8cm x 3cm x 1.4cm

CA\$1,500 - CA\$2,000



Lot 101
十八世纪 西藏度母像 带木座
TIBET-CHINESE TARA WITH WOOD STAND, 18TH C.

Wearing a dhoti, crown and beaded jewelry, left hand lowered in varadamudra and the right raised to the chest, each holding a stem of the flower, accompanied with a wood stand. H:16.5cm without stand

CA\$4,000 - CA\$6,000



Lot 102
韩国 观音铜像
KWAN-UM POSAL BRONZE BODHISATTVA, KOREA

Depicting standing on a double lotus stand, wearing a long robe and a tiara, with two hands raising in front of the chest holding a ritual object in hands. H: 23cm

CA\$500 - CA\$700



Lot 103
十八世纪 狮面空行母
TIBET BRONZE SIMBAVAKTRA DAKINI, 18TH C.

Depicting with lion face with three eyes, standing on one leg attached to the base by stepping on a lying figure, surrounded with a detachable flaming background. H: 18.2cm (total)

CA\$400 - CA\$600

Lot 104

十八世纪 西藏铜法器连座

TIBET GILT BRONZE RITUAL KNIFE PHURBA-KILA W/ STAND, 18TH C.

The handle carved with three-headed deity wearing a robe with six hands, the primary hand holding together in front of the chest and the rest holding ritual equipment, with a pair of wings on the back, accompanied with bronze stand. L: 24cm without stand; 29cm with stand.

CA\$800 - CA\$1,200



Lot 105

康熙 (1663-1722) 鎏金漆圣观音 带木座

GILT LACQUERED PADMAPANI, W/ STAND, KANGXI P.

Cast seated in lalitasana on a double lotus base, the right hand lowered in varadamudra and the left hand raised to the chest, dressed in dhoti with beaded jewellery with a tiara, accompanied with a fitted woodstand. H: 10cm without stand

CA\$2,000 - CA\$3,000



Lot 106

明 青铜观音随从像

BRONZE GUANGYIN ATTENDANT, MING (BROKEN BASE)

Depicting a standing figure of guanyin attendant, with hair tied up into two buns on top of the head, hands rising to the chest holding a religious instrument, standing on a lotus base on a wood base. Approx. H: 36.8cm with base

CA\$500 - CA\$700





LOT 107-LOT 190
Acquired from H. H. Pao Previous Collection
鲍恒发家族旧藏



Lot 107
清 黄花梨首饰盒
A FINE HUANGHUALI BOX, QING

of rectangular section, the front with a central circular plate with lock receptacle and ruyi-shaped clasp and the sides flanked with a pair of baitong handles, 39.7x 20x15cm.

Provenance: Acquired from H. H. Pao Previous Collection

CA\$3,000 - CA\$4,000

Lot 108
明以前 河南窑玉壶春瓶
HENAN YAO YUHUCHUN VASE BEFORE MING

Of pear-shaped body decorated in black glaze and brown splashes, H:17.5 cm

Provenance: Acquired from H. H. Pao Previous Collection

CA\$1,000 - CA\$1,500



Lot 109
明以前 建窑茶盏，定窑暗刻茶盏两个
GROUP OF JIAN WARE AND DING YAO TEA BOWLS BEFORE MING

A small Jian ware tea bowl overall covered in black glaze and a small dingyao tea bowl, incised with phoenixes to the interior. D: 10.9 cm & 10.3 cm.

Provenance: Acquired from H. H. Pao Previous Collection

CA\$500 - CA\$800



Lot 110
明以前 三彩刻花盖盒
SANCAI GLAZE COVER BOX BEFORE MING

A round-shaped pottery cover box, the cover part decorated with scrolling foliage, the interior is painted with yellow glaze, D: 9.8 cm

Provenance: Acquired from H. H. Pao Previous Collection

CA\$500 - CA\$800





Lot 111
清 地毯
A WOOL CARPET/ RUG, QING

Of rectangular form, of overall black tone decorated with 'hundred antiques' motifs, with the border depicting branches. 238.5cm x 152cm 93.9 inch x 59.8 inch

Provenance: Acquired from H. H. Pao Previous Collection

CA\$500 - CA\$800

Lot 112
清 洋蓝描金大盘
LARGE GILT-DECORATED BLUE-GROUND CHARGER, QING

The interior decorated in gilt with poney and peacock, all against a rich blue ground, the unglazed foot-ring reveals the buff ware, the exterior-mounted with metal support for hanging display purposes. D: 55.5cm

Provenance: Acquired from H. H. Pao Previous Collection

CA\$800 - CA\$1,200



Lot 113
明以前 褐釉螭龙小执壶 连盖
BROWN GLAZE DOUBLE GOURD EWER, MING OR EARLIER

Of double gourd form, the body decorated with the uneven dark brown tone with some light russet marks, one side attached with a long slim curving spout and the other side attached with a chalong, the unglazed base reveals the buffware. H: 13cm

Provenance: Acquired from H. H. Pao Previous Collection

CA\$600 - CA\$1,000



Lot 114
北魏 灰陶猎狗 连座
GREY POTTERY FIGURE OF A HOUND, NORTHERN WEI DYNA.

Vividly depicting a crouching hound, front legs crossed at the front, staring to the front alertly, the body decorated with paint, accompanied with a fitted wood stand. 16.1cm x 6cm x 8cm without stand.

Provenance: Acquired from H. H. Pao Previous Collection

CA\$800 - CA\$1,200



Lot 115
十八 / 十九世纪 蓝釉堆白座凳
BLUE GLAZE STOOL, 18/19TH C.

Of drum shape, molded around the exterior with bamboo, poney, orchid, and bird, the top pierced with a coin symbol, covered in white glazed against a dark blue ground. H:46cm Top diam: 30cm

Provenance: Acquired from H. H. Pao Previous Collection

CA\$600 - CA\$1,000

Lot 116
十九世纪 料器小碗连座
PEKING GLASS BOWL WITH STAND, 19TH C.

With rounded sides rising to the everted mouth rims, the body of transparent brown glass material, accompanied with a fitted wood stand. D:5.5cm H:10.6cm without stand

Provenance: Acquired from H. H. Pao Previous Collection

CA\$300 - CA\$500



Lot 117
酱釉花口香薰
BROWN GLAZE LOBED TRIPOD CENSER

Of slightly tapering - globular form, rising to a lobed rim, the censer supported on three beast-head feet resting on a cylindrical foot. the body covered with brown glaze, the unglazed base reveals the buff ware. H:11.5cm D:13.5cm

Provenance: Acquired from H. H. Pao Previous Collection

CA\$500 - CA\$800



Lot 118
马家窑釉罐
MAJIAYAO CULTURE PAINTED POTTERY JAR

Of compressed globular form, the body decorated with geometric patterns with paint, the body potted with four conical bulbs. H: 11.5cm

Provenance: Acquired from H. H. Pao Previous Collection

CA\$500 - CA\$800



Lot 119
宋 建窑茶盏
CHINESE JIAN-TYPE TEA BOWL, SONG

Of slightly tapering form, the exterior covered overall with a lustrous black glaze thinning at the rim, the glaze falling short of the foot to reveal the stoneware body underneath. D: 11.3cm H: 5.5cm

Provenance: Acquired from H. H. Pao Previous Collection

CA\$500 - CA\$800

Lot 120

宋 吉州窑茶盏一对

PAIR OF CHINESE JIZHOU YAO BOWLS, SONG

Each of conical form, the body decorated with buff-colored leaf reserved against a rich dark chocolate-brown ground. H:4.5cm; 4.5cm D:10.7cm; 11.2cm

Provenance: Acquired from H. H. Pao Previous Collection

CA\$600 - CA\$1,000



Lot 121

宋 建窑斗笠碗

CHINESE JIAN-TYPE CONICAL BOWL, SONG

Elegantly potted of shallow conical form rising to a five-lobed rim, covered with a light brown glaze, the unglazed base reveals the buff ware. D: 16cm H:4cm

Provenance: Acquired from H. H. Pao Previous Collection

CA\$500 - CA\$800



Lot 122

明 哥窑三足炉

GE-TYPE TRIPOD INCENSE BURNER, MING

Of cylindrical form, the body covered with Ge-type crackle glaze, overall of grayish tone, the burner supported on three feet the unglazed interior reveals the buff ware. H:13.5cm D:13.8cm

Provenance: Acquired from H. H. Pao Previous Collection

CA\$400 - CA\$700



Lot 124

十九世纪 仿哥窑青花赏瓶 《若深珍藏》款

GE-TYPE BLUE AND WHITE VASE, RUOSHEN MARK, 19TH C.

Of tapering form, the body decorated with a blue and white landscape scene, all against a russet crackle Ge-type base, the base with four-character Ruoshen Zhencang mark. H:24.5cm

Provenance: Acquired from H. H. Pao Previous Collection

CA\$300 - CA\$500



Lot 123

清 青釉青花釉里红寿桃赏瓶

CELADON, BLUE & RED GLAZE PEACH VASE, QING

Of globular form rising to a waisted neck and an everted mouth rim, all supported on a slightly tapering foot, the body covered with celadon crackle glaze, decorated with blue and copper red peaches. H: 19.5cm

Provenance: Acquired from H. H. Pao Previous Collection

CA\$300 - CA\$500



Lot 125
青花山水赏瓶 连盒
BLUE AND WHITE LANDSCAPE VASE W/ BOX

Of baluster form rising to a waisted neck and an everted mouth rim, the body painted with a willow tree, scholar's rock and river, the unglazed foot-ring reveals the buffware. H:13.1cm

Provenance: Acquired from H. H. Pao Previous Collection

CA\$300 - CA\$500



Lot 126
晚清 四方笔插一对 连盒
PAIR OF BLUE & WHITE BRUSH HOLDERS, LATE QING

Each of rectangular form, the body decorated in blue and white with bamboo, the four sides pierced in repeated coin pattern, all supported on four legs, accompanied with a fitted box. 6.6cm x 6.6cm x 6.1cm

Provenance: Acquired from H. H. Pao Previous Collection

CA\$300 - CA\$500

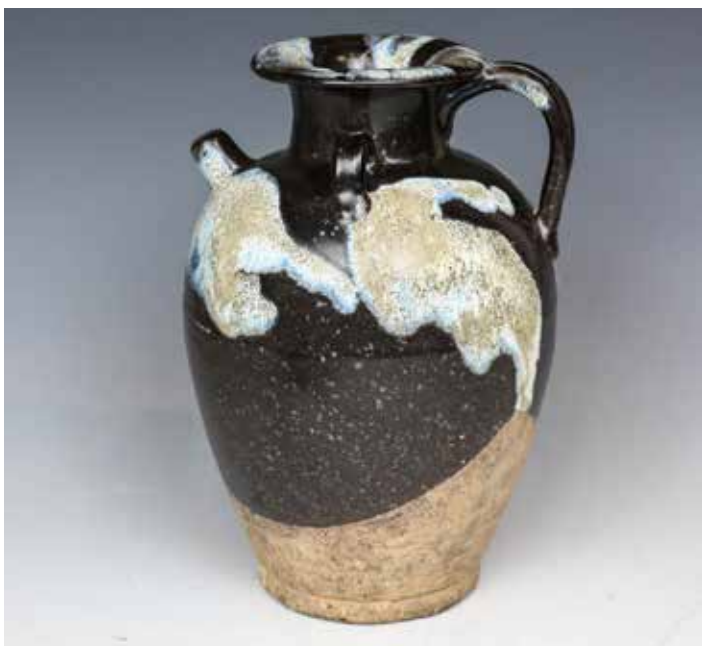


Lot 127
宋 / 金 河南窑钵 连盒
CHINESE JUNYAO PURPLE SPLASHED DISH, SONG/JIN

The bowl of conical form rising to a slightly inverted rim, overall covered with greyish-green glaze and a purple splash to the interior. 16*5.5cm.

Provenance: Acquired from H. H. Pao Previous Collection

CA\$1,500 - CA\$2,000



Lot 128
二系执手壶 连盒
SPLASHED BROWN GLAZE DOUBLE-EAR EWER, WITH BOX

The body of baluster form rising to a waisted neck with everted rim, set to one side with a strap handle and the other a short cylindrical spout, two-loop ears on the other sides, covered with brown glaze decorated with russet and blue marks, the glaze thinner to the foot which reveals the buffware, accompanied with a fitted box. H:22.5cm

Provenance: Acquired from H. H. Pao Previous Collection

CA\$1,000 - CA\$1,500

Lot 129
越窑高瓶 连座盒
YUE YAO VASE, WITH STAND AND BOX

The tall vase of slim tapering body, the waisted neck covered with well-potted figures and mystical animals, the rounded mouth rising to an everted rim, the body covered in celadon tone. the unglazed base reveals the buff ware, accompanied with a fitted stand and cover. H:35.5cm

Provenance: Acquired from H. H. Pao Previous Collection

CA\$500 - CA\$800



Lot 130
唐 加彩陶牛一对 连盒
CHINESE WHITE GLAZE EWER, YUAN&EARLIER

Each standing on a pierced base with tail flicked over one flank, the humped neck with heavy folds, the head held to the front and molded with short horns and wide flared nostrils, the eyes picked out in black, the body covered in orange tone, accompanied with a fitted box. L: 17.5 each

Provenance: Acquired from H. H. Pao Previous Collection

CA\$1,000 - CA\$1,500



Lot 131
晚清 累丝首饰一组四件
GROUP OF FOUR FILIGREE ORNAMENTS, LATE QING

The group comprising of three pins and a hair ornament, two pins in a fan shape, the other pin and the hair ornament of butterfly form. W: 6.5cm; 6.5cm; 4.7cm; 17.3cm

Provenance: Acquired from H. H. Pao Previous Collection

CA\$300 - CA\$500



Lot 132
晚清 青花文房一组三件
GROUP OF BLUE & WHITE SCHOLAR'S OBJECTS, LATE QING
RUOSHEN MARK

The group comprising of a seal paste box and cover (D:9.2cm), a brush washer (H:3cm), and a small vase (H:10.3cm), each decorated with double 'xi' character and the unglazed foot ring reveals the buff ware.

Provenance: Acquired from H. H. Pao Previous Collection

CA\$300 - CA\$500



Lot 133
晚清 掐丝珐琅杯一组六件
GROUP OF 6 CLOISSONNE ENAMEL DRAGON CUPS,
LATE QING

The group comprising of six cups, each exterior decorated with a dragon in pursuit of a flaming pearl amidst scrolling cloud, the interior covered in sky-blue color. H: 4.5cm D:7.1cm each.

Provenance: Acquired from H. H. Pao Previous Collection

CA\$300 - CA\$500



Lot 134
宋 高古陶器俑一组两件
GROUP OF TWO ANTIQUE POTTERY FIGURES, SONG

The group comprising of two pottery figures, the female figure wearing a long dress with hair tied to a bun, the male figure with curly hair and wearing a long robe. H: 23cm; 25.5cm

Provenance: Acquired from H. H. Pao Previous Collection

CA\$300 - CA\$500



Lot 135
晚清 仿成华斗彩盘对 《大明成华年制》款
PAIR OF DOUCAI DISHES, CHENGHUA MARK, LATE QING

Each of shallow rounded form resting on a short foot, painted with a central medallion enclosing boys playing in a landscape scene, the base with six-character Chenghua mark. D: 15.3cm each

Provenance: Acquired from H. H. Pao Previous Collection

CA\$500 - CA\$800



Lot 136
晚清 绿松石盖瓶 连座
TURQUOISE VASE AND COVER WITH STAND, LATE QING

The flattened vase of baluster form, the body decorated with an archaistic beast pattern, accompanied with a fitted cover and a fitted wood stand. H: 9.5cm without stand

Provenance: Acquired from H. H. Pao Previous Collection

CA\$300 - CA\$500



Lot 137
明 磁州窑罐 (有冲线)
CHINESE CIZHOU FLORAL JAR, MING (HAIRLINE)

The globular body rising to a waisted neck, to an everted rim, the body painted in dark brown around the shoulder with floral and leaf design, reserve on a creamy-white glaze ground. H: 21cm

Provenance: Acquired from H. H. Pao Previous Collection

CA\$500 - CA\$800



Lot 138
青花釉里红苹果尊 《大清光緒年制》连座
BLUE, WHITE & COPPER-RED VASE, GUANGXU MARK & P.

Of slightly-tapering globular form rising to a rounded mouth rim, the body decorated in blue and grisaille with floral design, the base with six-character Guangxu mark, accompanied with a fitted wood stand. H: 9cm without stand

Provenance: Acquired from H. H. Pao Previous Collection

CA\$2,000 - CA\$3,000

Lot 139

民国 墨彩双耳人物尊

GRISAILLE DECORATED DOUBLE LION HEAD VASE, REPUBLICAN P.

Of baluster form rising to a short slightly everted mouth, the body decorated with immortal female figures in grisaille glaze, the shoulder flanked with two lion head ears, the unglazed foot-ring reveals the buffware. H: 22cm

Provenance: Acquired from H. H. Pao Previous Collection

CA\$1,000 - CA\$1,500



Lot 140

宋 钧窑金银双耳炉 连盒

EARLY CHINESE EMERALD GREEN JADE LARGE BEAD PENDANT, HAN DYNASTY

Of compressed globular body rising to an everted rim, the shoulder flanked with two dragon ears, accompanied with a fitted box. D: 10cm H:6.1cm

Provenance: Acquired from H. H. Pao PreviousCollection

CA\$1,500 - CA\$2,000



Lot 141

料器鼻烟壶

YELLOW PEKING GLASS SNUFF BOTTLE

Of overall an ovoid form, the body cut with a geometric surface in different angles, overall of a yellow tone. H:7cm

Provenance: Acquired from H. H. Pao Previous Collection

CA\$300 - CA\$500

Lot 142

明以前 酱釉卧狗一对

PAIR OF BROWN GLAZE BULLDOGS, BEFORE MING

Each vividly potted as a recumbent dog, head raised toward the front alertly, wearing a collar with a bell at the neck, the body glazed in chocolate - brown glaze. 17.5cm x 7.3cm x 9cm (Each)

Provenance: Acquired from H. H. Pao Previous Collection

CA\$1,500 - CA\$2,000

Lot 143

鼻烟壶 连盒

SNUFF BOTTLE W/ BOX

Of globular form, the body covered with transparent yellow with russet inclusions, accompanied with a celadon stopper, accompanied with a fitted box. H: 8cm

Provenance: Acquired from H. H. Pao Previous Collection

CA\$200 - CA\$300





Lot 144
定窑青瓷印花盒
DING-TYPE CELADON GALZE PASTE BOX W/ COVER

Of compressed globular form, carved on the top with flowering leafy peony branches, the side with decorative stripes, applied overall, except the base and inner rim with a celadon glaze. H: 4.5cm

Provenance: Acquired from H. H. Pao Previous Collection

CA\$500 - CA\$800



Lot 145
明或更早 骨雕 连盒
CARVED BONE PIECE, W/ BOX, MING OR EARLIER

The bone of leaf shape, the interior incised with characters, the back with interlocking webs, the color of yellowish-brown tone, accompanied with a fitted box. 10cm x 11cm

Provenance: Acquired from H. H. Pao Previous Collection

CA\$1,000 - CA\$1,500



Lot 146
晚清 小唐卡一组两件 多罗、阿闍佛
TWO TARA AND BUDDHA AKSHOBHYA
THANGKA, LATE QING

The group comprising of two miniature thangkas depicting Tara and Buddha akshobhya. 30cm x 21.3cm; 29.5cm x 23cm

Provenance: Acquired from H. H. Pao Previous Collection

CA\$1,000 - CA\$1,500

Lot 147
晚清 曼荼罗
BUDDHIST MANDALA, LATE QING

Depicting four Buddhist figure in the middle of a square within circles. 32cm x 42cm

Provenance: Acquired from H. H. Pao Previous Collection

CA\$1,000 - CA\$1,500





Lot 148
晚清 唐卡 圣观世音
TWO AGATE CARVED SNUFF
BOTTLES, QING DYNASTY

Avalokiteshvara seated in vajraparyankasana on a lotus base surrounded by various manifestations of a bodhisattva. 51cm x 70.5cm

Provenance: Acquired from H. H. Pao Previous Collection

CA\$1,000 - CA\$1,500



Lot 149
晚清 唐卡 多杰羌佛
THANGKA OF VAJRADHARA, LATE QING

Depicting a pink vajradhara sitting against a pink halo, surrounded by various Buddhist figures within a landscape setting. 49cm x 74.5cm

Provenance: Acquired from H. H. Pao Previous Collection

CA\$1,000 - CA\$1,500



Lot 150
晚清 唐卡 宗嘎巴大师
THANGKA OF TSONGKHAPA, LATE QING

Depicting the lama Tsongkhapa wearing the yellow Pandita cap sitting in the middle surrounded by various Buddhist figures. 68.5cm x 44cm

Provenance: Acquired from H. H. Pao Previous Collection

CA\$1,000 - CA\$1,500



Lot 151
晚清 唐卡 宗嘎巴大师
THANGKA OF TSONGKHAPA, LATE QING

The lama Tsongkhapa wearing the yellow Pandita cap with lappets, seated at the center surrounded by a rainbow halo. 81cm x 51.5cm

Provenance: Acquired from H. H. Pao Previous Collection

CA\$1,000 - CA\$1,500



Lot 152
清 香樟木贴金千手观音
GILTED CAMPHOR WOOD FIGURE OF GUAN YIN, QING

The multi-armed deity seated in dhyanasana, the principal hands in namasakaramudra, the face with a peaceful benevolent expression; body covered with gold-leaves and the base reveals the original wood material. Approx. Height: 105cm without arms

Provenance: Acquired from H. H. Pao Previous Collection

CA\$1,000 - CA\$1,500

Lot 153
民国 玉雕挂件一组两件
GROUP OF TWO JADE CARVED PENDANTS, REPUBLIC P.

The group comprising of two jade pendant, pierced and carved as a butterfly and a vase with chrysanthemum, the stone of russet and celadon tone. 5.1cm x 5cm x 0.5cm; 6.3cm x 5cm x 0.5cm

Provenance: Acquired from H. H. Pao Previous Collection

CA\$300 - CA\$500



Lot 154
玉镯子一组四个
GROUP OF FOUR JADE BANGLES

The group comprising of four jade bangles in various sizes. Inner size: 48.6mm; 54.37mm; 57.65mm; 58mm;

Provenance: Acquired from H. H. Pao Previous Collection

CA\$300 - CA\$500



Lot 155
玉镯子一组三个
GROUP OF THREE JADE BANGLES

The group comprising of three jade bangles in various sizes. Inner size: 58.5mm; 57mm; 49.7mm

Provenance: Acquired from H. H. Pao Previous Collection

CA\$300 - CA\$500



Lot 156
玉挂件一组两件
GROUP OF TWO JADE PENDANT

The group comprising of a cylindrical jade pendant and a celadon jade carving, the jade carved in low-relief with an archaistic pattern. H: 2.9cm; 7.4cm x 3.8cm x 1cm

Provenance: Acquired from H. H. Pao Previous Collection

CA\$300 - CA\$500



Lot 157
宋 黄釉执壶
YELLOW GLAZE HANDLED EWER, SONG

Of ovoid form potted with a waisted neck and a garlic mouth, to a flared foot, attached with a curved handle and a curved spout. covered with yellow crackle glaze. H:22.5cm

Provenance: Acquired from H. H. Pao Previous Collection

CA\$500 - CA\$800



Lot 158
明 青白瓷竹形壶
CELADON GLAZE BAMBOO TEAPOT, MING

Of overall compressed cylindrical form, the body potted as bamboo form, accompanied with a fitted cover, attached with a curved spout and a curved handle. 8cm x 14.5cm x 5.5cm

Provenance: Acquired from H. H. Pao Previous Collection

CA\$300 - CA\$500



Lot 159
西周至汉 玉璧一组两件 连盒 **GROUP OF TWO ARCHAISTIC JADE BI DISC, WESTERN ZHOU TO HAN**

The group comprising of two celadon jade bi discs, with some brown inclusions, accompanied with a fitted box. Outer Diam: 11.2cm; 14.2cm Inner Diam: 4.9cm; 5.2cm

Provenance: Acquired from H. H. Pao Previous Collection

CA\$1,500 - CA\$2,000

Lot 160
鼻烟壶一组三件
GROUP OF THREE SNUFF BOTTLES

The group comprising of three snuff bottle, all of the globular form accompanied with a stopper, one of a yellow tone, one of pale white tone, and one with red decoration against a transparent background. H: 6.5cm; 5.8cm; 6cm

Provenance: Acquired from H. H. Pao Previous Collection

CA\$300 - CA\$500





Lot 161
鼻烟壶一组两件
GROUP OF TWO SNUFF BOTTLES

The group comprising of two snuff bottles, one of globular form covered in white tone, the body surrounded with a flying dragon, the base with a four-character seal, the other of baluster form of green tone. H: 7.3cm;7.5cm

Provenance: Acquired from H. H. Pao Previous Collection

CA\$300 - CA\$500



Lot 162
元 青瓷执壶 连座
CELADON EWER W/ WOOD STAND, YUAN

Of compressed globular form, the body of lobed form, the exterior carved with a repeated pattern, the shoulder attached with a spout and a curved handle, the unglazed base reveals the buffware, accompanied with a fitted wood stand. H:7.5cm

Provenance: Acquired from H. H. Pao Previous Collection

CA\$2,000 - CA\$3,000



Lot 163
十九世纪 红木嵌螺钿烟斗
RADEN INLAID HARDWOOD TOBACCO PIPE, 19TH C.

Of overall cylindrical form, the body decorated with raden depicting scholar's rock characters, figures and animals, the upper body decorated with a metal pipe and hooks. H: 20.5cm

Provenance: Acquired from H. H. Pao Previous Collection

CA\$1,000 - CA\$1,500



Lot 164
元 白釉四耳盖罐
WHITE FOUR-EAR JAR W/ COVER, YUAN

A white glazed jar and cover, of ovoid body with a cylindrical neck, supported on a short splayed foot, surmounted by a flattened cover, the shoulder set with four loop handles, covered in white glaze suffused with transparent crackles, the base is unglazed, height 13 cm

Provenance: Acquired from H. H. Pao Previous Collection

CA\$800 - CA\$1,200

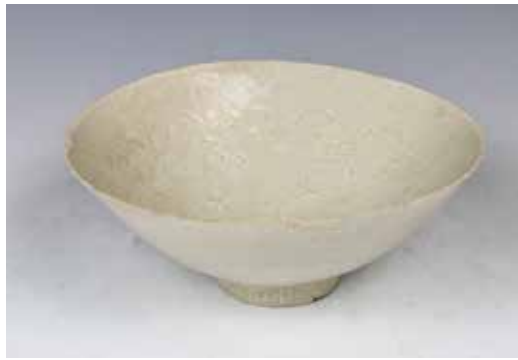


Lot 165
首饰珠串一组连盒
GROUP OF VARIOUS BEADS AND JEWELRIES W/ BOX

The group comprising of various beads, and necklace, accompanied with a wood box. box: 31.5cm x 16.5cm x 6cm

Provenance: Acquired from H. H. Pao Previous Collection

CA\$200 - CA\$300



Lot 166
元 青瓷暗刻纹碗
CELADON GLAZE BOWL, YUAN

Of conical form, the interior incised with decorative patterns, covered overall in celadon tone, the unglazed footring reveals the buffware. Diam: 16.7cm H: 6.5cm

Provenance: Acquired from H. H. Pao Previous Collection

CA\$300 - CA\$500



Lot 167
瓷器一组两件
GROUP OF A PORCELADIN TRAY AND A BROWN GLAZE VASE

A wooden panel tray, engraved two flying birds upside down and clouds, overall painted in green, the rim edge covered by an iron steel, red mark on reverse side, diameter 19.5 cm.; Of baluster form rising to an everted rim, covered with brown glaze and flanked with two ears on the neck. H: 14.5cm

Provenance: Acquired from H. H. Pao Previous Collection

CA\$500 - CA\$700



Lot 168
褐釉双系执壶
BROWN GLAZE DOUBLE EAR EWER

Of baluster form, the glaze thinner to the base and reveals the buffware, the shoulder attached with two loop ears, a handle and a curved spout. H:12cm

Provenance: Acquired from H. H. Pao Previous Collection

CA\$600 - CA\$1,000

Lot 169
溥仪 (1906-1967) 书法 水墨龙纹纸本 挂轴
PU YI (1906-1967) CALLIGRAPHY

Calligraphy of character "shou", with one seal of Xuan Tong Yu Bi, ink on yellow paper with a dragon pattern, hanging scroll. 43.5cm x 84cm

Provenance: Acquired from H. H. Pao Previous Collection

CA\$1,000 - CA\$1,500





Lot 170

载洵 (1885-1949)、溥儒 (1896-1963)、载涛 (1887-1970) 合作挂轴 设色纸本
A I S I N J I O R O
Z A I X U N (1 8 8 5 - 1 9 4 9) &
P U R U (1 8 9 6 - 1 9 6 3 & Z A I T A O

Calligraphy on the top and below depicting an elder walking with a horse, signed by the artists, with six seals, hanging scroll. 29.5cm x 29.5cm; D: 31cm

Provenance: Acquired from H. H. Pao Previous Collection

CA\$3,000 - CA\$5,000



Lot 171

何绍基 (1799-1873) 水墨洒金纸本 对联
HE SHAOJI (1799-1873) CALLIGRAPHY COUPLET

Calligraphy, ink on green paper splashed in gold, signed by the artist with three seals. hanging scroll. 130cm x 30cm each

Provenance: Acquired from H. H. Pao Previous Collection

CA\$10,000 - CA\$15,000



Lot 172

李思训 (651-718) 款 山水 设色纸本 挂轴
AFTER LI SIXUN (651-718)
LANDSCAPE

Depicting pavillions among landscape with mountains, signed by the artist with one seal, hanging scroll. 81.5cm x 36.5cm

Provenance: Acquired from H. H. Pao Previous Collection

CA\$1,500 - CA\$2,000

Lot 173

圆光、扇面 一组两幅
GROUP OF TWO FANS

The group comprising of two fans, one of circular form, painted with peony, ink and color on gold-flecked paper, signed by the artist with two seals; calligraphy, ink on gold-flecked paper, signed by the artist with two seals.

Provenance: Acquired from H. H. Pao Previous Collection

CA\$600 - CA\$1,000



Lot 174

汪克燠 (清) 扇面一组两幅
WANG KEXUN (QING) GROUP OF TWO FANS

The group comprising of two fans, both calligraphy, ink on paper and ink on golden fleak paper, each with one seal.

Provenance: Acquired from H. H. Pao Previous Collection

CA\$600 - CA\$1,000



Lot 175

明青花人物碗
BLUE AND WHITE FIGURE BOWL, MING

Of globular form, the body decorated with figures and animals within landscape scene, the base with a mark. H: 7.3cm Diam: 14.3cm

Provenance: Acquired from H. H. Pao Previous Collection

CA\$500 - CA\$800



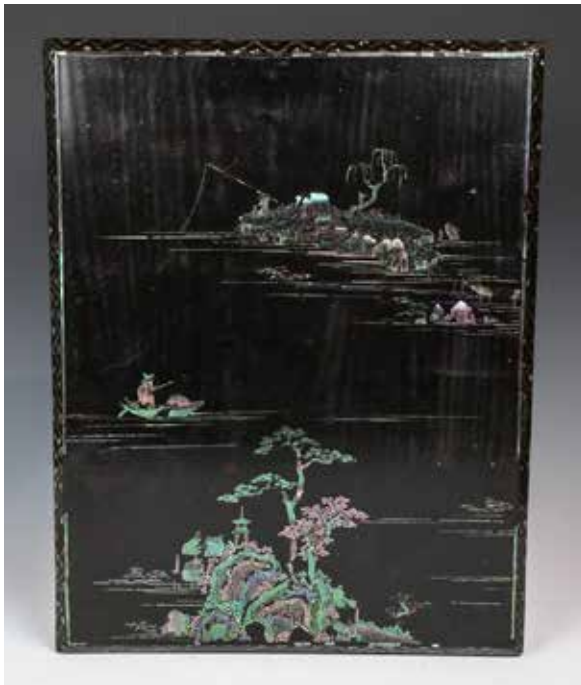
Lot 176

清白玉鸟连座盒
JADE BIRD WITH STAND AND BOX

Depicting a jade bird grasping lingzhi stem in its mouth, accompanied with a stand and a box. 8cm x 4.4cm x 3.5cm

Provenance: Acquired from H. H. Pao Previous Collection, Waddington's Asian Art Auction June 9, 2014 Lot 204

CA\$2,000 - CA\$3,000



Lot 177
十七 / 十八世纪 黑漆嵌螺钿木盒
RADEN INLAID LACQUERED BOX, 17/18TH C.

The surface depicting with inlaid Raden of fishermen within a landscape including Pavillion, tree, bamboo, and scholar's rock, all reserved on a black lacquered surface. 41.7cm x 32cm x 14.2cm

Provenance: Acquired from H. H. Pao Previous Collection

CA\$600 - CA\$1,000

Lot 178
清 银器一组八件
GROUP OF EIGHT SILVER ARTICLES, QING

The group comprising of eight silver pieces, including two finely carved ashtray and three circular boxes and three silver covered box. Highest H: 6cm

Provenance: Acquired from H. H. Pao Previous Collection

CA\$800 - CA\$1,200



Lot 179
清 银器一组十三件
GROUP OF THIRTEEN SILVER ARTICLES, QING

The group comprising of thirteen pieces silver articles, including eleven pieces of bangles and two of covered containers. Highest H: 8cm

Provenance: Acquired from H. H. Pao Previous Collection

CA\$500 - CA\$800



Lot 180
元或更早 陶罐连盖
BEIGE POTTERY JAR W/ COVER, YUAN OR EARILER

The jar of globular form tapering down to the flat base, the body covered with beige glaze, the unglazed base reveals the buffware, accompanied with a cover glazed in olive tone. H: 12cm

Provenance: Acquired from H. H. Pao Previous Collection

CA\$500 - CA\$800





Lot 181
元或更早 褐釉盖罐
BROWN GLAZE JAR WITH COVER, YUAN OR EARLIER

The jar of baluster form accompanied with a wooden domed cover, overall covered in olive-brown glaze, the unglazed base reveals the buffware. H: 25cm

Provenance: Acquired from H. H. Pao Previous Collection

CA\$800 - CA\$1,000



Lot 182
晚清 瓷器一组三件
GROUP OF 3 PORCELAIN ARTICLES W/ COVER, LATE QING

The group comprising of two circular box, decorated with gilt orchid and peony, against an orange ground, the base with four-character seal. Diam: 8cm The jar of globular form tapering down to the foot, the exterior decorated with morning glory and accompanied with a fitted dome cover. H: 10.8cm

Provenance: Acquired from H. H. Pao Previous Collection

CA\$300 - CA\$500



Lot 183
晚清 粉彩碟碗一组四件
GROUP OF FOUR FAMILLE ROSE ARTICLES, HONGXIAN MARK, LATE QING

The group comprising of a pair of famille rose bowls painted with plum blossoms, orchids, bamboo, and chrysanthemums, four-character hongxian mark on the base, diameter 14.5 cm; and two famille rose cups decorated with flowers on the exterior. H: 4cm

Provenance: Acquired from H. H. Pao Previous Collection

CA\$300 - CA\$500



Lot 184
骨雕、玉雕、木雕一组二十件 连盒
GROUP OF TWENTY OBJECTS W/ BOX

The group comprising of twenty various articles, including bone carvings, jade carvings and wood carvings, each of various design and sizes, accompanied with a box. Highest H: 10cm

Provenance: Acquired from H.H. Pao Previous Collection

CA\$300 - CA\$500

Lot 185
盒子一组三个
GROUP OF THREE BOXES

The group comprising of three boxes. Largest box: 43.5cm x 21.5cm 54cm

Provenance: Acquired from H. H. Pao Previous Collection

CA\$100 - CA\$200





Lot 186
晚清 点翠头饰
GROUP OF TWO HAIR PINS,
W/ BOX, LATE QING

The group comprising of two kingfisher feather hair pins, and three storage boxes. Biggest box: 43.5cm x 21.5cm x 54cm; hair pins longest L: 16cm

Provenance: Acquired from H. H. Pao Previous Collection

CA\$1,000 - CA\$1,500



Lot 187
傅抱石款 山水 设色纸本

AFTER FU BAOSHI (1904-1965) LANDSCAPE

Depicting landscape, ink and color on paper, signed by the artist with two seals, mounted. 64.5cm x 40.5cm

Provenance: Acquired from H. H. Pao Previous Collection

CA\$500 - CA\$800



Lot 188
晚清 刘廷柏 骏马 设色纸本
LIU TINGBAI (LATE QING)
HORSES

Depicting two horses, eating grass, signed and titled by the artist with one seal, ink and color on silk, mounted. 106cm x 48.5cm

Provenance: Acquired from H. H. Pao Previous Collection

CA\$1,000 - CA\$1,500



Lot 189
铜胎画珐琅流苏挂饰
RED TASSEL AND ENAMELED
HANGING

Delicately painted in bright enamels, attached with red tassels. L:115.5cm

Provenance: Acquired from H. H. Pao Previous Collection

CA\$300 - CA\$500



Lot 190
料器流苏挂饰
PEKING GLASS AND
TASSEL HANGING

A green Peking glass circular pendant attached with white tassels, the other end attached with two coins. L: 67.5cm

Provenance: Acquired from H. H. Pao Previous Collection

CA\$200 - CA\$300



Lot 191
青花缠花碗 《大清乾隆年制》款
BLUE AND WHITE BOWL, QIANLONG MARK

Of globular form, the body decorated with four shou character surrounded by interlaced floral design, the inner rim decorated with scrolling patterns, the base with six-character Qianlong mark. H: 7cm D:15cm

CA\$400 - CA\$600

Lot 192
十八/十九世纪 青花人物故事大缸
LARGE BLUE AND WHITE JARDINIERE,
18/19TH C.

Of ovoid form rising to an everted rim, the exterior decorated with soldiers within a landscape scene, the unglazed base reveals the buffware. D: 62cm H:58cm

CA\$2,000 - CA\$3,000



Lot 193
阿难铜像
BRONZE FIGURE OF THE ANANDA

Cast standing upright on a lotus stand with hands joined in anjalimudra, dressed in a wide long-sleeve monk's robes, draped with a kashaya fastened over the left shoulder with a loop and hook tied with chords. H: 20.5cm

CA\$500 - CA\$800



Lot 194
铜佛像
BRONZE FIGURE OF BUDDHA

The Buddha depicted as a standing figure, wearing a long rope standing on a lotus stand. H:26cm with stand.

CA\$500 - CA\$700



Lot 195
不空索罗铜菩萨像
NEPAL AMOGHAPASA BRONZE BUDDHA

The Buddha depicted as a standing figure, with eight hands, each hand holding an object, standing on a lotus stand. H:19cm with the stand.

CA\$800 - CA\$1,200



Lot 195A
十八世纪 出口粉彩人物插屏盘
EXPORT FAMILLE-ROSE PRONK ARBOR CHARGER
SCREEN, 18TH C.

The interior of the plate painted with figures within a garden scene surrounded by a band of flowers and insects, the reverse with an iron-red and purple frieze under the rim, accompanied with a screen. Plate Diam: 23cm; stand 53.8cm x 42cm x 15.4cm

CA\$2,000 - CA\$3,000



Lot 195B
蓝地描金龙纹大盘 《大清光绪年制》款
GILT-DECORATED BLUE GROUND CHARGER, GUANGXU MARK

The plate decorated in the interior with a golden dragon flying amidst scrolling clouds, in the middle of four Chinese characters surrounded by interlaced floral design and ruyi patterns, all against a deep blue ground, the base with six-character guangxu mark. H: 5.5cm Diam: 29.5cm

CA\$1,500 - CA\$2,000



Lot 196
宝石手镯
HARDSTONE BRACELET

Each link set with an oval plaque of hardstone, within a surround set with incised gold tone base, Approx. L: 18cm

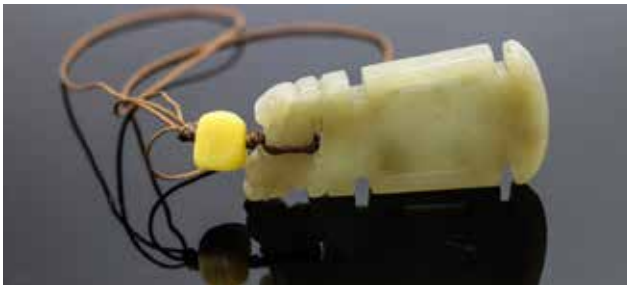
CA\$500 - CA\$800



Lot 197
玉螭龙荷花洗
JADE CHILONG LOTUS WASHER

Cast in the form of a lotus blossom, roots, and leaf, two chilong climbing on the rim, the stone of dark celadon tone with russet inclusions. 8cm x 15cm x 10.5cm

CA\$600 - CA\$1,000



Lot 198
青玉雕件
CELADON JADE PENDANT

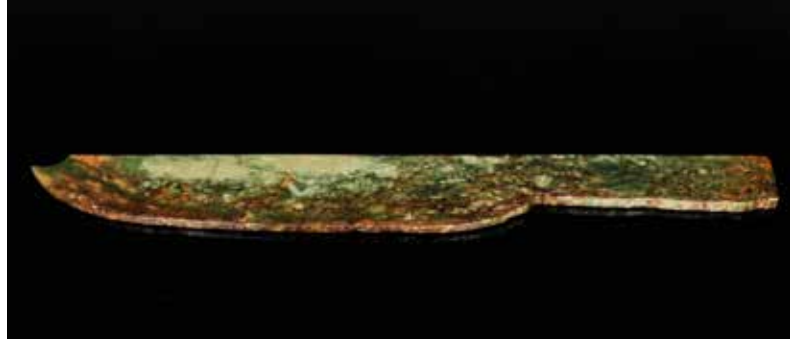
Carved with a mythical beast on top of a rectangular base decorated with archaistic patterns, the stone of celadon tone attached with a yellow stone and string. 6.5cm x 3.2cm x 0.7cm

CA\$300 - CA\$500

Lot 199
十九世纪 青玉大刀 连盒
ARCHAIC CELADON JADE BLADE, W/ BOX, 19TH C

Carved in the form of a blade, carved on the handle with an archaistic pattern, the stone of celadon tone splashed in gold and russet inclusions, accompanied with a fitted box. L: 42.1cm Thickness:0.7cm

CA\$500 - CA\$800



Lot 200
十九世纪 兽形印章 连盒
ARCHAIC BEAST FORM SEAL,
W/ BOX, 19TH C.

Of a beast form standing straight with two archaistic characters on the base the stone of creamy light brown tone, accompanied with a fitted box. 12.5cm x 6.5cm x 4.5cm

CA\$300 - CA\$500



Lot 201
叶公超 (1904-1981) 竹石
水墨纸本 连框
YE GONGCHAO (1904-1981)
BAMBOO W/ DEDICATION

Depicting bamboo and scholar's rock, ink on paper, signed by the artist with two seals, acquired from dedication, framed. Xu Qitao. 102cm x 34.5cm

CA\$600 - CA\$1,000

得自上款人：许锜弢



Lot 202

张大千 (1899-1983) 花卉 设色纸本 挂轴

ZHANG DAQIAN (1899-1983) PONEY

Depicting poney blossoms, ink, and color on paper, signed with three artist's seal, hanging scroll. 102.4cm x 40cm

CA\$50,000 - CA\$80,000

上跋人：陈从周 (1918 - 2000) 原名郁文，晚别号梓室，自称梓翁，浙江杭州人。中国著名古建筑园林艺术学家，上海市哲学社会科学大师，同济大学教授、博士生导师。擅长文、史、兼工诗词、绘画、大风堂入室弟子，曾任上海“大风堂”同门协会会长。



Lot 203

清 仕女图 设色绢本 连酸枝框

LADIES, WITH SUANZHI FRAME, QING

Depicting a lady sitting in a garden scene with tree, bamboo, and scholar's rock, a Pheonix flying at the top left corner, color and ink on silk, with a seal of the artist, framed. 34.5cm x 32.5cm

CA\$600 - CA\$1,000



Lot 204

《挥扇仕女图》印刷版

COURT LADIES PRINT

The printed piece depicting court ladies life scene with the thirteen figures, a print version of the Hui Shan Shi Nv Tu by artist Zhou Fang from Tang dynasty, the original work with 18 seals. 88.5cm x 33cm

CA\$300 - CA\$500



Lot 205
康熙 青花山水人物凤尾
尊
BLUE AND WHITE
LANDSCAPE YENYEN
VASE, KANGXI P.

The round-shouldered body rising from a spreading foot to a tall trumpet neck, the exterior painted in varying shades of blue of scholars in a continuous mountainous landscape. H:45.5cm

CA\$5,000 - CA\$6,000



Lot 206
民国 瘿木大笔海
BURLWOOD BRUSH POT,
REPUBLICAN P.

In an overall cylindrical form, remains the natural shape of the material, the wood of brown tone. 24.5cm x 20cm x 19.7cm

CA\$500 - CA\$1,000



Lot 207
晚清 粉彩大花缸 连座
FAMILLE ROSE FLORAL JARDINIÈRE W/ STAND, DRILLED,
LATE QING

Of slightly tapering form, the body decorated with florals such as chrysanthemum and poney, the base unglazed and drilled with a hole in the middle, accompanied with a fitted stand. H:39cm Diam:39.5cm

CA\$1,000 - CA\$1,500



Lot 208
青釉小盘 连盒 《大清乾隆年制》款
CELADON GLAZE PLATE W/ BOX, QIANLONG MARK

The plate glaze in the light sweet celadon glaze on the exterior, the interior, and base glazed in white, the base with six-character Qianlong mark, accompanied with a fitted box. Diam: 16.7cm H:4cm

CA\$1,500 - CA\$2,500



Lot 209
晚清 玉山子 连盒
**JADE SCHOLAR'S ROCK W/
 PLANTER, LATE QING**

The jade in the form of a scholar's rock, the stone of dark green tone, set within a russet and celadon planter, filled with various red stones. H:14.5cm

CA\$500 - CA\$1,000



Lot 210
赏石 连座
REDDISH BROWN SCHOLAR'S ROCK

A reddish-brown, orange, and dark brown scholar's rock, accompanied with a fitted wood stand. 11cm x 11cm x 6cm Weight: 1114 grams

CA\$100 - CA\$200



Lot 211
赏石 连座
BROWN SCHOLAR'S ROCK

A light russet, dark brown, and white inclusion scholar's rock, accompanied with a fitted wood stand. 13.5cm x 18.5cm x 4cm Weight: 1126 grams

CA\$100 - CA\$200



Lot 212
灰绿赏石 连座
GREY-ISH GREEN SCHOLAR'S ROCK

A greyish-green, dark green, and russet scholar's rock in the form of a mountain, accompanied by a fitted wood stand. 10cm x 10cm x 28cm weight: 2047 grams

CA\$800 - CA\$1,200

Lot 213
**大雅斋小天球瓶 《永庆
 长春》款**
**FAMILLE ROSE
 FLORAL VASE,
 YONGQINGCHANGCHUN
 MARK**

Of globular body rising to an elongated cylindrical neck, the body decorated with crane and prunus and poney against a dark purple ground, the mouth decorated with interlaced floral design against the yellowground, the base with four character Yong Qing Chang Chun mark. H:23cm

CA\$1,000 - CA\$1,500



Lot 214
明代风格青花青蛙碗 连盒
**MING DYNASTY - STYLE BLUE AND WHITE FROG BOWL W/
 BOX**

Of globular form rising from a high cylindrical foot to an everted rim, the interior and exterior decorated with blue glaze, the interior potted with a frog in the center, the unglazed foot-ring reveal the buffware, accompanied with a fitted box. H:7cm Diam:14.2cm

CA\$300 - CA\$500

Lot 215

刺绣一组两幅 带酸枝框

GROUP OF TWO EMBROIDERY PIECES WITH SUANZHI FRAMES

The group comprising of two embroidery pieces, depicting poney, lotus, mandarin duck, and bird. framed. 48.7cm x 31.7cm each

CA\$400 - CA\$600



Lot 216

黄花梨木盒

HUANGHUALI WOOD HINGED BOX

Of rectangular section, the hinged cover attached with the body, the wood of brown tone. 22.8cm x 11.8cm x 6cm

CA\$1,000 - CA\$1,500



Lot 217

晚清 青花花卉纹开片大盘

GE-TYPE BLUE AND WHITE FLORAL CHARGER, LATE QING

The interior decorated with blue and white floral and scholar stone, against a crackle glaze ground of creamy russet tone, the foot-ring reveals the buffware. Diam: 26.5cm H: 5.5cm

CA\$300 - CA\$500



Lot 218

粉彩碗一组两件

GROUP OF TWO FAMILLE ROSE BOWLS

The group comprising of two famille rose porcelain bowl, exterior decorated with flowers, animals, and scholar's rock. H: 5.7cm; 6cm

CA\$800 - CA\$1,200

Lot 219

瓷器一组两件

GROUP OF A GE-TYPE PLATE AND A BLUE AND WHITE JAR

A porcelain dish, of shallow sides supported on a short circular foot, overall covered with a greyish-cream glaze with a network of dark brown crackles, diameter 21.5 cm; A blue and white porcelain ginger jar, of ovoid body, decorated with three blooming lotus sprays and scrolling vines and a cover, height 12cm

CA\$500 - CA\$700





Lot 220
十八/十九世纪 五彩人物故事双耳瓶
WUCAI FIGURES VASE, 18/19TH C.

Of baluster form, rising to a waisted neck and to an everted rim, the body decorated with figures, two ears flanked on the neck. H:24.5cm

CA\$300 - CA\$400

Lot 221
民国 料器赏瓶一对
GROUP OF TWO PEKING GLASS VASE,
REPUBLICAN P.

The group comprising of two vases, one of baluster form, the exterior decorated with blue mandarine duck swimming H: 23.5cm; Of globular form rising from a spreading foot to an everted rim, covered with yellow fish and sea waves H: 23.5cm

CA\$200 - CA\$300



Lot 222
陶俑
POTTERY FIGURE OF AN
ATTENDANT

A male attendant, standing tall on a square shape base, one arm reaches to the chest, with the other one on the side. H:22cm

CA\$200 - CA\$400

Lot 223
晚清 德化开片白瓷观音立像《博及渔人》款
DEHUA CRACKLE GLAZE
GUANYIN, LATE QING,
BOJIYUREN MARK

Standing barefoot on a bank of flowers. the face modeled with a serene expression with downcast eyes, the back with four-character bojiyuren mark. H: 41.5cm

CA\$2,500 - CA\$3,000



Lot 224
带皮白玉扳指
WHITE AND RUSSET JADE ARCHER'S RING

The stone of pale celadon tone with russet inclusions on the square form. Inner diam: 2.2cm

CA\$2,000 - CA\$2,500



Lot 225
青花莲花纹碗 《大清雍正年制》款
BLUE AND WHITE BOWL, YONG ZHENG MARK

Of globular form, rising from a high cylindrical form, the body decorated with lotus floral pattern and sea wave pattern, the base with six-character Yongzheng mark. H:9cm Diam: 14.7cm

CA\$4,000 - CA\$6,000



Lot 226
‘喜鹊登梅’青玉鼻烟壶
JADE SNUFF BOTTLE W/ STOPPER

Of overall oval form, the surface carved with prunus and bird in low-relief, the stone of celadon tone, accompanied with a green stopper. H:8cm

CA\$500 - CA\$800



Lot 227
十九世纪 粉彩鸡缸杯 《大清乾隆仿古》款
FAMILLE ROSE CUP, QIANLONG MARK FANGGU, 19TH C.

Finely potted with steep rounded sides rising from a recessed base, painted on the exterior with a boy approaching a rooster, a hen tending four small chicks behind the rocks, the scene further decorated with blooming peonies and roses, inscribed with an imperial poem by Qianlong Emperor, base with six-characters Qianlong Fanggu mark, accompanied with a fitted stand. H: 7.3cm

CA\$2,000 - CA\$3,000



Lot 228
人物雕件 连盒
SLEEPING FIGURE CARVING, W/ BOX

Depicting a sleeping figure reclining against a jardiniere, the stone of reddish-brown and russet tone, accompanied with a fitted box. 12cm x 17cm x 9.5cm

CA\$400 - CA\$600

Lot 229
老红木如意嵌楠木瘿瓦头
NANMU BURLWOOD INSET REDWOOD RUYI SCEPTRE

The redwood curved shaft carved with three nanmu burlwood shaped panel. L: 46cm x W:11cm

CA\$1,500 - CA\$2,500





Lot 230
明 双耳玉杯连座
DOUBLE EARS CELADON JADE CUP WITH STAND, MING

Of compressed globular form to an slightly everted rim, the body decorated with archaistic motifs in low and high relief, and flanked with two beast head ears, accompanied with a fitted wooden stand. H: 5.5cm without stand.

CA\$5,000 - CA\$8,000



Lot 231
明 帽顶连座
CELADON JADE RETICULATED 'DEER' FINIAL, MING

Meticulously carved with reticulated lingzhi, branches and deer, with four pierced hole on the base, the stone of celadon tone, accompanied with a fitted wood stand and box. 3.8cm x 3.1cm x 2.9cm

CA\$3,000 - CA\$5,000



Lot 232
十九世纪 酱釉琮瓶对 连座 《大清乾隆年制》款
PAIR OF BROWN GLAZE CONG VASES, QIANLONG MARK, 19TH C.

Each body of square section rising from a short straight circular foot to a tapering circular neck with a lipped rim, molded with the 'Eight Trigrams' to each of the four sides in white glaze all against a dark brown glaze, the base with six-character qianlong mark, accompanied with a fitted stand. H: 19.5cm

CA\$1,000 - CA\$1,500

Lot 233
仿石纹碗 《大清乾隆年制》款
MARBLE-INIMITATION' BOWL, QIANLONG MARK

Of globular form rising from a cylindrical foot, the body covered overall with a pale beige glaze decorated with grey and brown streaks simulating marble, the base with six-character Qianlong mark. H: 8.5cm

CA\$2,000 - CA\$3,000





Lot 234

黄地青花竹石芭蕉纹玉壶春瓶 《大清光绪年制》款 带原紫檀底座
YELLOW-GROUND YUHUCHUNPING, W/ ZITAN STAND, GUANGXU MARK

Well potted with a pear-shaped body supported on a gently splayed foot, elegantly rising to a waisted neck and flared rim, the exterior painted with long leafy stems of bamboo and plantain growing beside craggy rocks all against the yellow ground, the base with six-character Guangxu mark and with original Zitan wood stand. H:29cm

CA\$30,000 - CA\$50,000



Lot 235

元或更早 高古玉杂件 连锦盒
ARCHAISTIC JADE GROUP W/ BOX, YUAN OR EARLIER

The group comprising of ten jade pieces in various shape and color, accompanied with a fitted box. Tallest Height: 4.8cm Box size: 20.2cm x 11.7cm x 4.2cm

CA\$2,500 - CA\$3,500



Lot 236

商 玉鱼形佩 连锦盒
ARCHAISTIC JADE FISH W/ BOX, SHANG

The jade in the form of a fish, the stone of russet tone, with white and dark green inclusions. accompanied with a fitted box. 69.29mm x 23.89mm x 1.93mm

CA\$600 - CA\$1,000



Lot 237
明 龙泉窑大盘
LONGQUAN CELADON GLAZE CHARGER, MING

The charger covered in celadon glaze with lotus blossom decorated in the middle. H: 5cm Diam: 26.5cm

CA\$600 - CA\$1,000

Lot 238
十八/十九世纪 鼻烟壶一组两件
GROUP OF TWO SNUFF BOTTLES, 18TH/19TH C.

The group comprising of two snuff bottles, one jade and one agate, both of oval form, the jade of celadon tone with brown inclusion and the agate of russet tone with yellow inclusions, both with stoppers. H: 6.2cm;7.7cm

CA\$500 - CA\$1,000



Lot 239
景泰蓝一组三件
THREE CLOISSONNE ENAMEL ARTICLES

The group comprising of three cloisonne enameled articles, including a cup (H: 5.5cm), a covered container (H: 8cm), and a seal box (Diam: 5.5cm).

CA\$300 - CA\$400



Lot 240
十九世纪 玉雕插屏
CARVED WHITE JADE PLAQUE IN FRAME, 19TH C.

The jade plaque of oval form, carved in high-relief with 'hundred antiques' motifs, mounted within a pierced wood frames with four 'shou' characters. Total H: 16cm; Jade: 8.5cm x 6.5cm

CA\$1,500 - CA\$2,000



Lot 241
十九世纪 嵌玉牌纯银插屏
CHINESE SILVER TABLE SCREEN W/ JADE DISC, 19TH C.

The circular shape jade disc mounted in a pierced silver frame, decorated with flower and bamboo leaf design. Total H: 8.5cm Diam of jade: 3.5cm

CA\$600 - CA\$800



Lot 242
清 掐丝珐琅镶玉捧盒
JADE-INSET CLOISSONNE ENAMEL BOX AND COVER, QING

The box and cover of compressed globular form, decorated to the side of mythical beasts against a reddish-brown ground, inlaid to the center with a rounded celadon jade plaque carved in low relief and pierced with 'shou' character with bats surrounding, the interior enameled in similar design except the ground decorated with blue ground. H: 10cm

CA\$1,000 - CA\$1,500

Lot 243
康熙 出口西洋风格粉彩盖盒
EXPORT WESTERN-STYLE COIN BOX, KANGXI P.

Of compressed globular form, the paste box decorated with a western figure on the top and surrounding with western characters on the side, the base decorated with a code of arm image, all against a white ground. H:4.6cm

CA\$1,000 - CA\$1,500



Lot 244
十七 / 十八世纪 青白玉蝴蝶佩
JADE BUTTERFLY CARVING, 17TH/18TH C.

The jade carved in a form of a butterfly, the carved and pierced with detailed decoration in low relief. The stone of a creamy white tone, one side with slightly purple color, accompanied with a fitted box. 10.4cm x 6.6cm x 0.9cm

CA\$600 - CA\$800



Lot 245
十七 / 十八世纪 三足青花大香炉
BLUE AND WHITE FIGURE TRIPOD CENSER, 17TH/18TH C.

Of slightly compressed form supported on three feet, the body decorated with blue and white figures including shoulao at a garden scene with pine trees. H: 13.5cm

CA\$1,500 - CA\$2,000



Lot 246
高古玉雕件四件一组
GROUP OF FOUR ARCHAIC JADE CARVINGS

The group comprising of four jade carvings, including a mythical beast (L: 4.5cm), a cong form pendant (H:2.2cm), a russet pendant (H: 1.7cm) and a chilong carving (L: 3.1cm)

CA\$500 - CA\$800



Lot 247
明或更早 (古玉) 料器古玉项链
PEIKING GLASS AND ARCHAIC JADE, MING OR EARLIER

The necklace comprising of three archaic jade dated Ming dynasty or earlier, connected with 34 green peiking glass beads. Approx L: 50cm

CA\$1,500 - CA\$2,000

Lot 249
17/18 世纪 白玉水滴连座
WHITE JADE WATER DROP 17/18 CENTURY

A white jade water drop pot with phoenix shape and carving comes with a fitted wood stand, H: 3 cm

CA\$5,000 - CA\$6,000



Lot 248
清 螭龙白玉环
WHITE CHILONG JADE QING

A white chilong jade disc ring, D: 5 cm

CA\$800 - CA\$1,200



Lot 250
清 大子冈玉牌连座
A LARGE JADE PLAQUE QING

Painted magpies standing on prunus branches on a yellow ground, six character Guanxu mark at the base, D 19.5 cm.

\$2,000-\$3,000



Lot 251
民国 竹雕山水笔筒对
A PAIR OF BAMBOO CARVED BRUSH POTS REPUBLIC PERIOD

A pair of bamboo carved landscape brush pots, H: 16 cm

CA\$500 - CA\$1,000

Lot 252
18/19 世纪 日本铁壶
A JAPANESE IRON TEAPOT 18/19TH CENTURY

A Japanese iron teapot of round shape and the body decorated with four crabs, 16.5cm x 12.5cm

CA\$500 - CA\$800



Lot 253
17/18 世纪 鹦鹉瓷雕摆件对
A PAIR OF PARROT CARVING PORCELAINS 17TH/18TH C.
 A pair of parrot carving porcelains with blue glaze standing on green stands, H: 21.5 cm

CA\$500 - CA\$800



Lot 254
民国 景泰蓝大碗
A LARGE CLOISSONNE ENAMEL BOWL REPUBLIC PERIOD

A large cloisonné enamel bowl, the exterior decorated with mythical beasts and interior with scrolling foliage, 25.8cm x 13.5cm

CA\$300 - CA\$500

TERMS & CONDITIONS

STUNNING ARTS GALLERY AND AUCTION INC AS AGENT

The lots listed in this catalog will be offered by Stunning Arts Gallery and Auction Inc as owner or as agent for consignor(s) subject to the following terms and conditions. By bidding at auction you agree to be bound by these Conditions of Sale.

BEFORE THE AUCTION

Prospective buyers are strongly advised to personally examine any property in which they are interested before the auction takes place. All lots are sold "AS IS" and without recourse and neither Stunning Arts Gallery and Auction Inc nor its consignor(s) makes any warranties or representations, express or implied with respect to such lots. No statement, whether written or oral, and whether made in catalog, or in supplements to the catalog, an advertisement, a bill of sale, a saleroom posting or announcement, the remarks of an auctioneer, or otherwise, shall be deemed to create any warranty, representation or assumption of liability. It is the responsibility of prospective purchasers to inspect or have inspected each lot upon which they wish to bid, relying upon their own advisers, and to bid accordingly.

BIDDING IN THE SALE

Refusal of Admission Stunning Arts Gallery and Auction Inc has the right, at our complete discretion, to refuse admission to the premises or participation in any auction and to reject any bid.

Registration before Bidding

A prospective buyer must complete and sign a registration form and provide identification before bidding. We require bank or other financial references.

Bidding as Principal

To bid in person, the bidder will need to register for and collect a numbered paddle before the auction begins. Proof of identity will be required. Should you be the successful buyer of a lot, please ensure that your paddle can be seen by the auctioneer and that it is your number that is called out. All lots sold will be invoiced to the name and address in which the paddle has been registered and cannot be transferred to other names and addresses. When making a bid, a bidder is accepting personal liability to pay the purchase price, including the buyer's premium, all applicable taxes and all other applicable charges.

Absentee Bids

If the bidder cannot attend the auction, we will be happy to execute written bids on your behalf. Absentee bids in writing must be submitted to Stunning Arts Gallery and Auction Inc at least 24 hours prior to the sale by letter or fax. In the event of identical bids, the earliest received will take precedence.

Reserves

Each lot may be subject to an unpublished reserve which may be changed at any time by agreement between the auctioneer and the consignor.

Auctioneer's Discretion

The auctioneer has the right at his or her absolute and sole discretion to refuse any bid, to advance the bidding in such a manner as he or she may decide, to withdraw any lot, and in the case of error or dispute, and whether during or after the sale, to determine the successful bidder, to continue the bidding, to cancel the sale or to re-offer and resell the item in dispute. If any dispute arises after the sale, our sale record is conclusive.

Successful Bid

The highest bidder acknowledged by the auctioneer will be the purchaser. In the case of a tie bid, the winning bidder will be determined by the auctioneer at his or her sole discretion. In the event of a dispute between bidders, the auctioneer has final discretion to determine the successful bidder or to re-offer the lot in dispute.

AFTER THE SALE

Buyer's Premium

In addition to the hammer price, the buyer agrees to pay Stunning

Arts Gallery and Auction Inc a buyer's premium and the applicable sales tax added to the final total. Each lot sold is subject to a premium of 20% of the successful bid price of each lot up to and including \$50,000 and 18% on any amount in excess of \$50,000 as part of the purchase price. Online bidding is subject to a 23% buyers premium.

Deposit

The contact information provided by the purchase must be accurate and true. The auctioneer reserves the right to request a deposit to be provided before bidding and will be used against any and all purchases made at the auction.

Taxes

Unless exempted by law, the buyer is required to pay HST on the total purchase price including buyer's premium. For international buyers, taxes are not applicable when purchases are shipped out of country. Items shipped out of Ontario, the buyer is required to pay taxes as per the tax status of that province, whether is HST or GST.

Payment

Immediately after the purchase of a lot, the buyer shall pay or undertake to the satisfaction of the auctioneer with respect to payment of the whole or any part of the purchase price requested by the auctioneer, failing which the auctioneer in his sole discretion may cancel the sale, with or without re-offering the item for sale.

The buyer shall pay for all lots within 7 business days from the date of the sale, after which a late charge of 2% per month on the total invoice may be incurred or the auctioneer, in his sole discretion, may cancel the sale. The buyer shall not become the owner of the lot until paid for in full. Items must be removed within 10 days from the date of sale, after which storage charges may be incurred.

Each lot purchased, unless the sale is cancelled as above, shall be held by the auctioneer at his premises or at a public warehouse at the sole risk of the buyer until fully paid for and take away.

Payment for purchases must be by cash, INTERAC direct debit (Canadian clients in person only), certified cheque (U.S. and Overseas not applicable), bank draft, electronic transfer (fee applies), and VISA or MASTER or AMERICAN EXPRESS card.

Should the item not be paid for within the time limit stated, the auctioneer, without limitation of the rights of the consignor and the auctioneer against the buyer, may resell any of the articles affected.

SHIPPING

Shipping is provided at the buyers' expense. Stunning Arts Gallery will provide a list of shippers. The purchased items will be released with the buyers' written consent and until payment has been made in full. Shipping, packing and handling is at the entire risk of the buyer. SAG will have no liability of any loss or damage to such items.

竞价出价表 ABSENTEE/TELEPHONE BIDDING FORM

表格应以墨水笔填写，并电邮、邮寄或传真至本公司

FORMS SHOULD BE COMPLETED IN INK AND EMAILED, MAILED, OR FAXED TO THE AUCTION HOUSE

Name: 名字:				Telephone Absentee
Phone: 联系电话:		Email: 电子邮件:		
Address: 地址:				
City: 城市:		Province: 省:		Postal Code: 邮编:
Credit Card Number: 信用卡号码:				Expiry Date: 到期日期:
Name on Card: 持卡人姓名:				CVV: 卡后三位安全码:
Billing Address (if different): 账单邮寄地址:				

IMPORTANT 重要事项

Please note that the execution of written and telephone bids is offered as an additional service for no extra charge, and at the bidder's risk. It is undertaken subject to Stunning Arts' other commitments at the time of auction, Stunning Arts, therefore cannot accept liability for failure to place such bids, whether through negligence or otherwise. 请注意书面及电话竞价是免费提供之附加服务，风险由竞投人承担，而该等服务会在本公司于拍卖时其他承诺之限下进行；因此，无论是由于疏忽或其他原因引致，本公司无需就未能做出该竞价承担责任。

NUMBER 编号	DESCRIPTION 名称	MAXIMUM BID 最高竞价
		CAD\$
		CAD\$
		CAD\$
		CAD\$
		CAD\$
		CAD\$
		CAD\$

DEPOSIT 押金

All absentee bidder and telephone bidder are requested by Stunning Arts to deliver to Stunning Arts a deposit of CAD\$2,000 or such higher amount as may be determined by Stunning Arts, and any financial references, guarantees and/or such other security as Stunning Arts may require in its absolute discretion as security for the bid. 本公司可要求电话竞拍者以及最高单价竞拍者完成预先登记程序及交付本公司 2,000 加币或其他由本公司决定之更大金额的定金及任何财务状况证明，担保或/及其他由本公司可全权酌情决定要求的抵押作为参加本公司竞拍的保障。

The contract between the buyer and the seller is concluded on the striking of the auctioneer's hammer, and payment of the purchase price for any lot and any buyer's expenses is due 7 business days after the conclusion of the auction. 买家及卖家之合约于拍卖官击锤时订立，而阁下作为买家必须于拍卖会结束后 7 个工作日支付拍卖品之买入价及任何买家费用。

TELEPHONE NUMBER DURING THE SALE 拍卖联络电话:

FOR WRITTEN/FIXED BIDS 书面竞价

- Bids will be executed for the lowest price as is permitted by other bids or reserves. 竞价将以尽可能低之价格进行
- Where appropriate your written bids will be rounded down to the nearest amount consistent with the auctioneer's bidding increments. 如适当时，阁下之书面竞价将会被大概调整至最接近拍卖官递增之竞价金额

FOR TELEPHONE BIDS 电话竞价

- Please clearly specify the telephone number on which you may be reached at the time of the sale, including the country code. We will call you from the saleroom shortly before your lot is offered. 请清楚注明于拍卖期间可联络阁下之电话号码，包括国家号码。我们会于阁下之拍卖品竞价前致电给阁下。

I agree that I am bound by the Condition of Business for Buyer and the Authenticity Guarantee which are published in the catalogue for the sale on purchases at auction that I make. If any bid is successful, I agree that all sales are subjected to a 20% buyer's premium added to the hammer price, 18% on any bids over CAD \$ 50,000. 本人同意接受图册内列明之给卖家的规则及保证书，是次拍卖会上的一切交易均受以上条款所约束。若竞价成功，本人愿意支付附加成交价之上的 20% 买家佣金，或以 50,000 加币以上成交的拍品之 18% 的买家佣金。

I consent to the use of this information and any other information obtained by Stunning Arts Gallery and Auction in accordance with the Guide for Absentee Bidders and Conditions of Business. I am aware that all telephone bid lines may be recorded. 本人同意 Stunning Arts Gallery and Auction 使用本人资料及根据给委托竞拍者指引与给买家业务规则内而取得至其他资料。本人明白所有电话竞价会被录音。

SIGNED 签署 _____

DATE 日期 _____

剔

開

畫

閑

安

香

榻

小泉



集陶贈
 七弟併題血馬
 丈夫志四海生者
 與豈名清聽矯雲翮
 猛氣充長纓良辰誰可
 待中宵尚孤征忽值山河
 改奇功遂不存問君何能
 爾曰吳不遠研筭人得生楚
 百劫為誰傳書翮里查齋
 蘇興感悲泉恨不及周
 穆願速增慨然
 兄載洵書



年冬
 物神
 其
 楚
 聖
 居士

心

倚

書

臺

作

射

岑

子如





長城藝術



Stunning Arts Gallery
8333 Kennedy Rd., Unit 103, 104
Markham ON L3R 4P8 錦繡街
Phone/Fax: 905-604-8288
Email: stunningartsgallery@gmail.com
www.stunningartsgallery.com