



**1**  
A HARDSTONE-INLAIED RED LACQUER CABINET  
百宝嵌红漆立柜

Of rectangular form, the doors and two sides finely embellished with hard stones, to depict flowers and birds, all against a red lacquer ground, the interior with mirror and the top with a later glass cover. 66.5cm x 38.5cm x 112cm

\$500-1000



**2**  
A HARDSTONE-INLAIED BLACK LACQUER CABINET  
百宝嵌黑漆立柜

Of rectangular form, the doors and two sides finely embellished with hard stones, to depict ladies within a garden scene, all against a black lacquer ground, the interior with mirror and the top with a later glass cover. 79cm x 38cm x 111cm

\$500-1000



**3**  
A RED LACQUER WOOD CABINET  
朱红小立柜

The cabinet composed of two drawers and a solid door enclosed two separated space, the drawers attached with a metal handle and the doors attached with a metal panel with hooks for the lock; the surface lacquered red, all supported with for legs. 49cm x 76cm x 82cm

\$200-300



**4**  
BLACK LACQUERED BOX WITH STAND  
漆盒带底座

The box of rectangular form, with landscape decoration on the top, covered with a later glass, the box accompanied with a fitted wooden stand, similarly decorated, the interior lacquered black. 49.5cm x 49.5cm x 50cm

\$800-1200



**5**  
A GROUP OF THREE JADE HAIR PINS  
玉钗一组三件

The set composed of three jade hair pins, two have the panel carved and pierced with different decorations, and one carved as twisted rhizome leading to a lotus at the end. L:17.7cm, 20.3cm, 22cm

\$400-700



**6**  
A CELADON JADE PAPER WEIGHT  
青白玉莲子镇纸

The jade paperweight curved in shape mimicking lotus roots, the stone of celadon white jade tone. 6cm x 5.5cm x 3cm

\$2000-3000



**7**  
WHITE JADE INK BOX  
白玉印泥盒

The ink box of circular form, the stone of translucent celadon tone. D:5cm

\$700-1000



**8**  
A JADE CURVED OBJECT, QING  
清如意大玉瓦头

The jade object of curved circular form, the exterior curved with peaches. 12.1cm x 11.9cm

\$800-1500



**9**  
A ROBIN'S EGG GLAZED SLENDER  
NECK VASE  
炉钧釉细颈瓶

A porcelain vase of pear-shaped body surmounted by a slender neck and a trumpet mouth rim, the mouth rim is asymmetric, applied overall with a lustrous robin's egg blue glaze thinning at the mouth in russettone, H: 17.5 cm

\$500-800



**10**  
A RED GLAZED VASE  
红釉赏瓶

A red-glazed vase, of compressed globular body surmounted by a slender neck, overall covered in deep red glaze leaving the base unglazed with the buff body, H: 14 cm

\$400-700



**11**  
A BIG PORCELAIN JARDINIERE  
WITH WOODEN STAND, QING  
清粉彩大缸带木座 (有修补)

Painted on the exterior with scholar's rock, willow, frogs and butterfly, accompanied with a fitted wooden stand. H: 35.5cm without stand, D:39cm

\$1000-1500



**12**  
A 18th C. FAMILLE ROSE 'FIGURAL'  
VASE  
十八世纪粉彩人物瓶

Of baluster body tapered to the round foot, with a straight cylindrical mouth, the body decorated with human figures within a garden scene. H:24.5cm

\$300-500



**13**  
A FLAMBE-GALZE JAR WITH WOOD COVER, QING  
清窑变釉罐带木盖

The flambe-glazed jar of ovoid shape, the jar is overall covered with a red tone that darker to purple on the mouth edges, the jar accompanied with a fitted wooden cover with a round knob in the middle. D:30.5cm

\$500-800



**14**  
A GREEN GLAZE TRIPOD JAR  
汉绿釉三足罐

The green glazed tripod jar of cylindrical form, rising to an inverted mouth, all supported on three beast-like feet, the body covered with green glaze, with the base unglazed. H:32cm

\$1500-2000



**15**  
A CINNEBAR LACQUER PLATE  
剔红盘

The interior decorated with a band of design, including three flowers and diamond-shape repeated patterns, the middle of the interior and the exterior remain flat and smooth. D:24cm

\$300-500



**16**  
A CINNEBAR LACQUER 'FIGURAL' BOX WITH COVER  
剔红人物小盒

The cover carved with two boys within an exterior scene, with trees and scholar's stone, the background decorated with a diamond-shaped pattern, the sides of the cover and the body decorated with same diamond-shape patterns, the base and interior lacquered black. 11.6cm x 10cm x 4.3cm

\$300-500



**17**  
A WOOD CARVE PANEL  
金木雕挂件

The panel of rectangular form, depicting figures within a garden scene in high-relief, the figures, architectures, and trees covered in gold color, all against a red ground. 74.5cm x 26.5cm

\$300-500



**18**  
EMBROIDERY PIECE, QING  
清刺绣饰件

An embroidery piece decorated with two figures with different types of animals and plants, the middle with a Ba Gua pattern, attached to a piece of paper. 36cm x 38.5cm

\$300-600



**19**  
A SET OF THREE SNUFF BOTTLES  
鼻烟壶一套三件

A set of three snuff bottles, one of rectangular form and the stone of creamy, russet tone with black marks, one of rectangular form with blue Xi against a transparent ground, one of ovoid form with red decoration against an orange ground. H:8cm, 6.5cm, 6cm

\$500-1000



**20**  
A SET OF THREE SNUFF BOTTLES  
鼻烟壶一套三件

A set of three snuff bottles, one of ovoid form with red decorations, one of tapered form with yellow decorations, one circular form with blue decorations. H:7.3cm, 7cm, 8.2cm

\$500-1000



**21**  
A SET OF TWO SNUFF BOTTLES  
鼻烟壶一套两件

A set of two blue and white snuff bottles, one of cylindrical form rising to a small waisted neck, one of an ovoid body with a waisted neck. H:8.6cm, 6.6cm

\$500-1000



**22**  
A SET OF TWO SNUFF BOTTLES  
鼻烟壶一套两件

A set of two blue and white snuff bottles, one of double gourd form and one with globular body rising to a waisted long neck. H:6cm, 6.9cm

\$500-1000



**23**  
A SET OF THREE SNUFF BOTTLES  
鼻烟壶一套三件

The set composed of three snuff bottles, one of cylindrical form with pink exterior and green cover, one of rectangular form decorated with red flowers on the surface, one of rectangular shape and brown and greytone. H:9.4cm, 7.4cm, 6.5cm

\$500-1000



**24**  
A SET OF THREE SNUFF BOTTLES  
鼻烟壶一套三件

The set composed of three snuff bottles, all of the ovoid form, one of celadon and brown tone with a dark brown mark, one of transparent color, one of the reddish-brown tone. H:6.5cm, 8.8cm

\$500-1000



**25**  
A SET OF THREE THUMBRINGS  
扳指一套三件

A set of three thumb rings, one of octagon form and the stone of celadon and russet tone, one of red and yellow tone, and one black thumb ring. D: 3.1cm, 3.3cm, 3.6cm

\$400-700



**26**  
A SET OF SMALL OBJECTS  
小摆件一组

A set of small objects composed of a jade goat, a wooden tortoise, a wooden chestnut, a small wooden figure, a small wooden plate and a string of small wooden objects.

\$400-700



**27**  
A CRYSTAL GUANYIN, QING  
清 水晶观音立像

A crystal Guanyin, the whole body of transparent stone, with some small bubbles within, accompanied with a fitted wooden stand. H:40cm

\$6000-8000



**28**  
A SET OF TWELVE SMALL  
OBJECTS  
小物件一组十二件

A set of twelve small objects, accompanied by a six grids box.

\$400-700



**29**  
A RED GLAZE VASE, QING  
清 红釉赏瓶

The red glazed vase of overall tapered form, with a globular body that raising to a waisted long neck to an everted mouth, the mouth edge, the base and the interior glazed white with crackles and the vase exterior covered mostly in red. H:40cm

\$500-1000



**30**  
A SET OF FOUR FAMILLE-ROSE  
CIRCULAR BOXES WITH COVER  
粉彩小盖盒一组四件

A set of four famille-rose circular boxes with cover, of a globular body, with a tapered foot, the body and the foot decorated with goldfishes and water grasses, the cover decorated with a similar design, three boxes with a poney design in the middle. D:6cm H:5.5 each

\$200-400



**31**  
A GREEN GLAZE BRUSH REST,  
QING

清 绿釉雕瓷笔架山

The green glazed brush rest is mimicking two beasts resting and climbing on scholar's stone. W:13cmH:5.5cm

\$500-800



**32**  
A PURPLISH-RED PEIKING GLASS  
WINE CUPS, 19TH C.

十九世纪 红色料器杯一对

A set of two Peking glass wine cups, of a deep bell-shaped body, stands on a tall foot rising to a flared rim, the body with translucent purplish-red tone. H:6cm D:6.2cm

\$400-700



**33**  
A FAMILLE-ROSE CIRCULAR BOX  
AND COVER, HONG XIAN

胭脂红开光盖盒《洪宪年制》款

The famille-rose circular box with cover, the cover painted with flower design, the side with peach bloom glaze and the base with a four-character seal, the interior with a flat disk with four-character on the surface. D:9.5cm

\$1000-1500



**34**  
A SET OF TWO PORCELAIN  
WARES

瓷器一组两件

A set of two porcelain wares, comprising a small jar and a small bowl. The jar covered overall with a soft grayish glaze suffused with a matrix of brown and black crackles, the bowl covered overall with a creamy glaze. D:8.7cm;4.5cm H:3cm; 5cm

\$300-500



**35**  
BIG JADE BOWL  
清 大玉碗

A big white jade bowl, the body of globular form rising to an everted mouth rim, supported on a cylindrical foot. the stone of pale celadon tone. D:21cm H:8cm

\$4000-6000



**36**  
A BLUE GLAZE BASIN  
蓝釉小盆

The basin of ovoid shape, with an everted mouth, supported on three legs, the body and interior covered with blue glaze and the base remain unglazed. 40cm x 25cm x 6.5cm

\$500-800



**37**  
A WOODEN BRUSH POT  
十八 / 十九世纪 紫檀笔筒

The brush pot of cylindrical form, supported on three feet, the wooden brush of dark black tone. H:12.5cm D:10.5cm

\$1000-1500



**38**  
A CELADON GLAZE BRUSH REST  
青釉雕瓷笔架山

The brush rest modeled in the form of a mountain, the upper part covered with celadon glaze, the lower part with brown glaze and the unglazed base reveals the buff body. W:9.5cm H:6cm

\$300-500



**39**  
A BROWN CIRCULAR BOX AND COVER  
褐石小印泥盒

The small box of circular form with cover, the whole body decorated with brown circular patterns, the interior with some red powders. D:5.5cm

\$700-1000



**40**  
A BRONZE TRIPOD WATER POT  
鸡头三足铜水注

The bronze container with a globular body, rising from three feet, attached with a chicken's head shape spout, the handle decorated like a fish and the cover is attached to the handle. W:11cm H:7.5cm

\$300-500



**41**  
A PAIR OF POTTERY PIGS, HAN  
汉陶野猪一对连盒

Of a pair of pottery pig, one has the ear decorated with orange paint; the body remains unglazed. 10.2cm x 4.7cm x 3.5cm each

\$1500-2000



**42**  
A SET OF TWO SMALL BLACK  
GLAZED BOWLS  
黑釉茶盏一对

The set of two small black glazed bowls, both unglazed base reveals the buff body, one bowl's interior with reddish-brown splashes. D:9.2cm ; 9.5cm

\$500-800



**43**  
THE EXPORT BOWL AND COVER.  
18TH CENTURY

**十八世纪 蓝地金纹大碗**

The bowl of globular form, rising on a short cylindrical foot, the fitted cover with a short cylindrical knob and an everted mouth rim, the deep blue bowl painted on the exterior with poney enameled in gilt, the interior with a painted poney in the middle. D:36.5cm

\$2000-3000



**44**  
A JADE BRUSH REST, QING  
清 玉笔架山

The jade brush rest is mimicking the form of a scholar's stone, the stone of celadon tone with some russet inclusions. 17.8cm x 7.1cm x 5cm

\$2000-3000



**45**  
A GREEN HETIAN JADE CUP WITH  
STAND. QING

**清 河田碧玉双耳杯 连座**

The cup of compressed tapered form, with a four-petal mouth and supported on a short foot, the side attached with two handles carved with beast head, accompanied with a fitted wood stand. H:7.6cm W:15.5cm L:7.4cm without stand

\$3000-3500



**46**  
A JADE QILONG CUP, MING  
明 骑龙玉杯

The cup of rectangular form, side attached to a dragon decoration, the stone of russet tone with some darker inclusions. 11cm x 7.5cm x 5.4cm

\$3000-4000



**47**  
A JADE TAPIR/BEAR  
玉熊

The jade curved mimicking a bear, the stone of green tone, the body with some brown and red inclusions, accompanied with a stand. 17.5cm x 9.5cm x 7cm without stand

\$1000-1500



**48**  
A 19TH C. JADE WHITE QUAIL  
白玉鹤鹑

The jade curved mimicking the shape of quail, the stone of celadon tone. 8cm x 4.6cm x 3.3cm

\$1000-1500





**49**  
A SET OF TWO SNUFF BOTTLES  
鼻烟壶一套两件

The set composed of two snuff bottles, all of the cylindrical form, both decorated with famille-rose paintings on the exterior, one without cover. H:6.9cm, 7.9cm

\$500-1000



**50**  
A SET OF TWO SNUFF BOTTLES  
鼻烟壶一套两件

A set of two snuff bottles, one of cylindrical form painted with a garden scene on the exterior, one of hexagon form, the body decorated with iron red human figures within an outdoor scene. H:7.9cm, 7.6cm

\$500-1000



**51**  
A SET OF TWO SNUFF BOTTLES  
鼻烟壶一套两件

A set of two snuff bottles, all of the cylindrical form, one with horses painted in blue on the exterior and one decorated with an iron-red dragon in pursuit of peals. H:7cm, 8.1cm

\$500-1000



**52**  
A SET OF THREE SNUFF BOTTLES  
鼻烟壶一套三件

A set of three snuff bottles, one of ovoid form with the white and green exterior, one of rectangular shape with a transparent green body, one vividly mimicking a cucumber. H:6.8cm, 6.5cm, 10cm

\$500-1000



**53**  
A SET OF THREE SNUFF BOTTLES  
鼻烟壶一套三件

A set of three snuff bottle, one of circular form with the red translucent body, one of rectangular shape with green body, one of conical form with red, yellow and black lines. H:6.3cm, 7.3cm, 6.5cm

\$500-1000



**54**  
A SET OF THREE SNUFF BOTTLES  
鼻烟壶一套三件

A set of three snuff bottles, two of circular form, the stone of creamy russet tone and the other with black inclusions, one of tapered form, the stone of celadon tone. H:6.5cm, 6.7cm, 6.7cm

\$500-1000



**55**  
A KOREAN BUDDHA  
韩国佛像

The Buddha depicted as a standing figure, wearing a long rope standing on a lotus stand. H:26.3cm with stand.

\$500-700



**56**  
A NEPAL AMOGHAPASA BUDDHA  
尼泊尔不空羼索观音

The Buddha depicted as a standing figure, with eight hands, each hand holding an object, standing on a lotus stand. H:19.4 with the stand.

\$800-1200



**57**  
A TIBET MANJUSRI BUDDHA  
西藏文殊菩萨

The Buddha depicted as a sitting figure, sitting on a lotus stand. H:11.4cm

\$800-1200



**58**  
AN USNISAVIJAYA GILT BRONZE  
18TH C.  
十八世纪 尊胜菩萨像

The Buddha depicted as a sitting figure, the figure with eight hands and three heads, sitting on a lotus seat, gilded exterior. 17cm x 13cm x 6.5cm

\$3000-5000



**59**  
A ZISHA TEAPOT, CHEN GUAN  
HOU, 18TH C.  
清 陈观候 紫砂壶

The Zisha teapot of an overall conical form, the base model to a three-petal form, with a four-character seal. H:12.5cm

\$600-1000



**60**  
A ZISHA TEAPOT, GU JINGZHOU  
MARK  
顾景舟款 紫砂壶

The Zisha teapot of a compressed globular form, body curved with calligraphy and depiction of landscape, the base with three seals and the cover with one seal. H:10cm

\$600-1000



**61**  
AN ENAMELLED YIXING TEAPOT AND COVER  
加彩紫砂壶

Of overall conical form with a compressed globular lower body, the Zisha teapot painted with flowers and dots, the gilt handle and short spout attached to the body, accompanied with fitted cover decorated with a similar design, the interior and base reveal the Zisha ware, the base incised with four-character seal. W:12cm H:5.6cm

\$200-400



**64**  
A SET OF THREE TIBETAN OBJECTS  
藏式物件三件一组

The set composed of a headband, a small box, and a brooch, all of the metal base, with hardstone decoration, the box with a mirror inlaid. W:14cm; W:8.5cm; 5.5cm x2cm x2cm

\$300-500



**62**  
A CORAL AND TURQUOISE BRACELET  
珊瑚绿松石银手链

The bracelet is composed of a coral carved with bat and clouds, and two pieces of turquoise all inlaid in a silver interlaced floral base.

\$1500-2000



**63**  
A TURQUOISE NECKLACE  
老绿松石圆珠挂链

The necklace composed of fifty turquoise beads, with different green tones and some russet marks. Perimeter: 70cm

\$1500-2500



**65**  
A FLAMBE-GLAZE VASE  
窑变釉赏瓶

The flambe-glazed vase with ovoid body rising to a waisted neck with an everted mouth rim, the body covered overall with red glaze and some yellow splashes, the interior and the base glazed white, the vase accompanied with a long yellow rope on the neck. H:50cm

\$400-700



**66**  
A PAIR OF BROWN GLAZE BOWLS  
褐釉茶盏一对

The bowls of conical form, applied on the interior and part of the exterior with a rich lustrous bluish-black glaze and a transparent brown glaze, both with an unglazed base that reveals the buff ware. D:11cm H:5cm; 5.5cm each

\$400-700



**67**  
A GLASS BRUSHPOT, REPUBLIC PERIOD

**民国 玻璃笔筒**

The brush pot of hexagonal form, the body decorated with landscape paintings and depiction of bamboo and scholar's stones, the sides covered with glass, the base incised with ten words suggesting the period and producer. H:26cm W:13.3cm L:11.5cm

\$200-400



**68**  
AN EMBROIDERY PIECE

**晚清 绣品挂件**

The piece of peach and pomegranate form, decorated with flowers, birds and fishes, the leaf connected to tassels. W:25cm L:17cm

\$200-300



**69**  
AN INK STONE  
'博古斋' 款石砚

The ink stone of rectangular form, composed of three parts: the cover, the stone, and the base, all made of same material, the cover carved with words, the stone with a water pool. 9cm x 12cm x 3cm

\$300-500



**70**  
A JADE PLUM BLOSSOM  
**玉石梅花**

Plum blossom made of hard stones with different colors, the leaf also vividly depicted with hard stone, all set within a tapered-square planter. 40cm x 42cm x 22cm

\$400-700



**71**  
A JADE BONSAI  
**玉石盆景**

Green flowers made of hard stones with vivid colors, the leaf also similarly depicted with hard stone, all set within a jade-like tapered-square planter attached to a fitted wooden stand. 26cm x 18cm x 10cm

\$100-200



**72**  
A PAIR OF FAMILLE ROSE WINE CUPS, 19TH CENTURY  
**十九世纪《大清康熙年制》款粉彩小杯一对**

The two wine cups with deep rounded sides sweeping up from a straight foot to an everted rim, the body decorated with calligraphy, flowers, and scholar's stone, the base with six-character Kang Xi sealmark. H:5cm D:6.5cm each

\$500-800



**73**  
A SET OF TWO SNUFF BOTTLES  
鼻烟壶一套两件

A set of two snuff bottles, one of ovoid form carved with lotus and birds, the other of circular form and the stone of greenish-blue tone. H:7cm, 7.3cm

\$400-700



**74**  
A SET OF TWO SNUFF BOTTLES  
鼻烟壶一套两件

A set of two snuff bottles, one of human figure shape without a cover, one of tapered form and the stone of greenish brown tone. H:6.3cm, 6.5cm

\$400-700



**75**  
A WHITE JADE SNUFF BOTTLE  
白玉鼻烟壶

The snuff bottle of rectangular form, the body carved with a dragon in pursuit of a pearl, the stone of celadon tone, accompanied with a fitted wooden stand. H:6cm

\$2000-3000



**76**  
A SET OF TWO SNUFF BOTTLES  
鼻烟壶一套两件

The snuff bottles both of circular form, one of red tone and one of a brown tone. H:6.6cm; 6.2cm

\$500-1000



**77**  
A CELADON JADE SNUFF BOTTLE  
青白玉鼻烟壶

A snuff bottle of tapered form, the body curved with birds and chrysanthemum, the stone of celadon tone with black marks on one side. H:7cm

\$2000-3000



**78**  
A SET OF THREE PITH PAPER  
PAINTINGS  
通草人物画一组三件

The set composed of three pith paper paintings, one painted with a couple, one painted with five scenes with human figures, one painted with boats. 30.5cm x 23cm; 39.5cm x 65cm; 31cm x 20cm without frame.

\$500-1000



**79**  
THE ADMONITIONS SCROLL  
PRINT  
顾恺之《女史箴图》复制品  
带原盒

A narrative painting depicting figures and their stories. 351.5cm x 25cm

\$300-500



**80**  
A JAPANESE SCROLL PAINTING  
日本画手卷 带原盒

Depicts landscape with calligraphy which marked by red brush. 308.5cm x 27.3cm

\$300-500



**81**  
THE SCROLL PRINT  
李嵩《西湖图卷》复制品带原盒

Depicts the West Lake as it appeared in the Southern Sung Dynasty. 280.5cm x 28cm

\$300-500



**82**  
LI KUCHAN STYLE, THREE FISHES  
李苦禅 (1899-1983) 款三  
鱼水墨纸本

Depicting three fish, with calligraphy, signed Li Kuchan, with two artist's seals, ink on paper, hanging scroll. 65.5cm X 33cm without frame

\$300-500



**83**  
A BLACK WOOD-ALIKE PENDANT,  
QING  
清吊牌

The wooden pendant of ovoid shape. With two holes at the head and the toe for ropes, the middle incised with a monkey and a lion. The pendant of dark black tone with a yellow rope. 7cm x 3cm

\$200-400



**84**  
A SET OF TWO SMALL OBJECTS  
清紫砂鸟食罐、汉陶骑士

The set comprising of two small objects, the Zisha object of globular form, with a pointed foot, a handle attached on the side, the pottery equestrian figure glazed green, the unglazed horse feet reveals the buffware, all accompanied with a box. W:4.5cm H:3.5cm; W: 6.5cm H:6.5cm

\$200-400



**85**  
A GROUP OF THREE WOODEN  
NETSUKE

黄杨木雕件三个

A set of three wooden objects, one carved with a frog and a crab resting on a lotus leaf, one depicting four mushrooms formed in a Ruyi shape, the last one vividly depicted as four peanuts. 5cm x 6cm; 5.5cm 2.5cm; 5cm x 3cm

\$200-400



**86**  
A JADE PENDANT NECKLACE,  
QING

清 玉牌挂件项链

The pendant of square form, the jade of brown tone, surrounded by a band of blue decoration, the pendant connected to two strings of jade beads. 7.2cm x 5.2cm Perimeter: 68cm

\$800-1200



**87**  
A BAT JADE PENDANT, QING  
清 蝙蝠纹玉花牌

The jade pendant of triangle form, carved with a bat and interlaced pomegranate, the stone of celadon tone, accompanied with a small box. 8.7cm x 5cm x 0.7cm

\$2000-3000



**88**  
A BEAST' JADE PENDANT, QING  
清 兽纹玉花牌

The jade pendant of rectangular form, carved with two beasts, the stone of celadon tone, accompanied with a red bag. 5.5cm x 4cm x 0.7cm

\$2000-3000



**89**  
A JADE PENDANT WITH WOODEN  
STAND, QING  
清 玉挂饰带架

The jade pendant carved with pomegranate and branches, the reverse side carved with two words, the jade pendant connected by a red string to a wooden stand. 6cm x 5.3cm x 0.5cm

\$2000-3000



**90**  
A WHITE JADE 'BOYS AND  
LOTUS LEAF'  
白玉连生贵子

Depicting two boys playing with lotus leaves and bat, the stone of creamy white color flecked with russet, accompanied with a wooden stand. H: 12cm without stand

\$500-800



**91**  
A SHOUSHAN SOAPSTONE SEAL  
"王福厂" 寿山石闲章

The Shoushan soapstone seal carved around in low relief with a landscape of trees, mountain, bridge, pavilion, and boat. 7cm x 6.5cm x 2.3cm

\$300-600



**92**  
A TIANHUANG SOAPSTONE SEAL  
"李鸿章" 田黄狮钮带盒

Of circular form, the Tianhuang soapstone seal carved with a lion on the top, accompanied with a fitted wooden box. H:5.2cm

\$1500-2000



**93**  
A SIX-PANEL HARDSTONE INLAID SCREEN  
百宝嵌六屏屏风

The black lacquered ground enlivened with rich symbolism in jade, carnelian, agate, and mother-of-pearl appliques and semi-precious stones. 183cm x 40.5cm each panel

\$5000-8000



**94**  
A HARDWOOD CABINET  
清楠木长柜

The cabinet of rectangular form, with five drawers mounted with handle, surrounding a double-hinged door, the bottom with two doors pulled to open from the top. 141.5cm x 56.5cm x 90cm

\$1000-2000



**95**  
A BRONZE DEER DISPLAY  
铜鹿摆件

The deer carved by bronze, with a branch of flower in its mouth, the back with a hole and a fitted cover decorated with flowers. H:34cm

\$200-400



**96**  
A SET OF EIGHT SILVER OBJECTS  
银器八件组

The set composed of eight silver pieces, including two silver hooks, two silver roses, two small containers, one box, and one leaf decoration.

\$300-500





**97**  
A RED LADY'S INFORMAL ROBE,  
QING  
清代贵妇服饰

A red-ground robe decorated with flowers and bats, the sleeve and the edges decorated with blue-ground flower design.

\$1000-2000



**98**  
A BIRD AND FLOWER GILT  
WOODEN BOX  
花鸟金木雕佛龕

The wooden box pierced with gilded wooden decoration. The box of rectangular form, the door frames mounted with a metal handle, enclosed an interior painted with golden decorations. 29cm x 44cm x 12.5cm

\$800-1500



**99**  
BIRD AND FLOWER ENAMEL VASE  
花鸟纹开光搪瓷赏瓶

Of compressed globular body, raising to a waisted long neck with two rings attached on the neck, the body decorated with plum blossom, chrysanthemum, and begonia, all against a yellow ground, the base with a dark red seal. H:20cm

\$200-400



**100**  
A LACQUERED WOODEN BOX,  
17TH/ 18TH C.  
十七 / 十八世纪 漆雕木盒

The square wooden box decorated with lacquered design, the cover with a band of bamboo, orchid, chrysanthemum, and plum blossom, and a landscape within the middle surrounded by four groups of peaches, the sides decorated with bats cloud pattern, the base and interior lacquered black. 44.5cm x 44.5cm x 13.5cm

\$600-1000



**101**  
AN OPIUM PIPE  
清烟斗

The pipe with a bronze mouth incised with crane decoration, the end with similar decoration, with a yellow bamboo-like material in the middle. L:20cm

\$100-200



**102**  
A CLOISSONNE TEAPOT, REPUBLIC  
PERIOD  
民国 景泰蓝茶壶

The cloisonné teapot of globular form, with a long spout, the body decorated with the interlaced floral pattern on a blue background, the fitted cover decorated with a similar pattern and a small knob attached in the middle, two ears attached to the shoulder and connected by two string-like handles. 14cm x 11cm x 10cm

\$500-800



**103**  
A BLUE AND WHITE FIGURAL PLATE. QING  
清青花人物故事盘

The blue and white plate painted with two figures within an exterior scene, with a deer and a crane, all surrounded by a band depicting landscapes, the plate with a small minor chip on the edge. D:22.5cm

\$800-1200



**104**  
A FAMILLE-ROSE TEAPOT, QING  
清粉彩茶壶

The famille-rose teapot with a globular body and a long spout, the curved handle attached on the side, the body painted with figures within an outdoor scene, the fitted cover depicts trees similar to the trees on the body. W:20cm H:17cm

\$500-800



**105**  
AN EXPORT KWON-GLAZED PORCELAIN BOWL, QING  
清出口广彩执手小壶

The Kwon-glazed porcelain bowl of globular form, with a twisted handle attached on the side, the body decorated with a vividly depicted human figure within an indoor scene, all supported on a short cylindrical foot. D:14.5 H:7.5cm

\$500-800



**106**  
A PAIR OF QING CLOISSONNE VASES  
清景泰蓝长颈尊一对

The cloisonné vases of the pear-shape body rising from a tapered foot to an elongated waisted neck, with an everted mouth rim, the body decorated with gold chrysanthemum against the dark blue background, the base with a band of decorated petals, the glaze reveals the bronze ware. H:21cm

\$2000-3000



**107**  
A DECORATIVE CARPET  
地毯

Decorative carpet? Depicting bats and lotus blossom within flaming clouds, all against a dark blue background. 67.5cm x 730cm

\$1000-2000



**108**  
A HANGING CARPET (SMALL)  
挂毯

A hanging carpet, of overall yellow and orange tone. 100cm x 172cm

\$200-400



**109**  
A HANGING CARPET (BIG)  
挂毯

A hanging carpet, of overall red and gold tone. 112cm x 210cm

\$200-400



**110**  
A GLASS-PAINTING  
玻璃画人物故事挂屏

Painted on the glass, depicting immortals with cranes and deer within an exterior scene, framed. 89cm x 43cm without the frame

\$300-500



**111**  
BIRD AND FLOWER  
徐华 (民国) 花鸟图 镜心 设色纸本

Depicting a bird standing on a branch with chrysanthemum and plum blossom, and scholar's stone, with one artist's seal, framed. 46.5cm x 31cm without frame

\$300-500



**112**  
A ROUND MARBLE-INSET  
CIRCULAR SCREEN  
老红木云石座屏

The circular marble panel is enclosed by an openwork wood frame and supported on a wood stand with carved and pierced decoration, the top of the marble is inscribed with a title, Fu Lan Zhou Yu followed by a signature and a seal of the artist. H:62.5cm; marble D:23.5cm

\$1000-1500



**113**  
A JADE HANDLE MAGNIFYING  
GLASS  
玉柄放大镜

The handle decorated with flower design and the stone of celadon tone, mounted with a metal fitting as a magnifying glass. L15cm, Glass D:6.3cm

\$200-400



**114**  
A WHITE GLAZE WOODEN COVER  
SENSOR  
清德化双耳炉连紫檀木座紫檀木盖

The sensor of compressed form, rising to a waisted neck to an everted mouth rim, the body attached with two handles carved with beast decoration, all supported on a tapered foot. H:17cm

\$8000-12000



**115**  
A FAMILLE-ROSE BOWL, KANGXI  
康熙 神兽纹彩绘碗

The bowl of globular form, rising to an everted mouth rim, the rim has been repaired with yellow marks, the body painted with beasts, the interior with a band of decoration near the mouth rim, the centerpainted with a fish, all supported on a short cylindrical foot, accompanied with a box. H:9.5cm D:19.7cm

\$1500-2500



**116**  
A BLUE GLAZED ROULEAU VASE  
蓝釉棒槌瓶

The cylindrical body sweeping to a tall neck encircled by a collar and tapering slightly towards the galleried rim, covered with blue glaze, the mouth and foot rim glazed white. H:36cm

\$400-700



**117**  
A POCKET WATCH  
老怀表

The pocket watch of circular form, the two exterior sides decorated with oil paint flower and lady. D:4.6cm

\$700-1000



**118**  
A JIAN TEA BOWL  
建窑茶盏

The Jian-type bowl of conical form with brown glaze and a reddish-brown glaze across the mouth rim, the unglazed base reveals the buff ware. D:12.2cm H:7cm

\$300-500



**119**  
A SILVER KAPAL BOWL WITH  
STAND  
藏教银法器

The bowl of globular form accompanied with a triangular stand, the exterior curved with skulls. H:11cm

\$500-1000



**120**  
A POTTERY FIGURE  
陶人像

A male attendant, standing tall on a square shape base, one arm reaches to the chest, with the other one on the side. H:22cm

\$200-400



**121**  
GREEN GLAZE  
'CHRYSANTHEMUM' DISH  
青釉菊瓣大盘

With rounded sides delicately molded in the form of thirty-two chrysanthemum petals curving upwards to a lobed rim, the middle curved with a gold-fish, all supported on a circular foot rim, applied overall with a celadon glaze. D:46.5cm

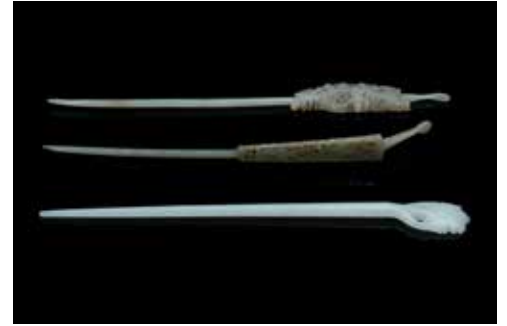
\$500-800



**122**  
A SET OF FIVE SILVER OBJECTS  
银器一组五件

The set composed of two finely carved ashtray and three circular boxes.

\$200-400



**123**  
A SET OF THREE JADE HAIR PINS  
玉发钗一组三件

The set composed of three jade hairpins, two with a circular spoon-shaped finial and the panel carved and pierced with decorations, one engraved with a flower at the end. L:21.5cm, 22.5cm, 23cm

\$300-500



**124**  
A JADE INLAID WOOD BOX  
镶玉木盒

The box of rectangular form, the cover inlaid with a jade decoration, carved with interlaced flowers and birds. 9cm x 27cm x 10cm

\$600-1000



**125**  
A TURQUOISE NECKLACE  
绿松石镶银项链

The necklace composed of turquoise and silver, with a turquoise disk in the middle stabilized by the silver decoration. D:6.5cm Perimeter:76cm

\$1500-2000



**126**  
A 19TH C. TRIPOD FAMILLE ROSE  
PORCELAIN CENSOR  
十九世纪 双耳三足粉彩洪福  
齐天纹炉

Of compressed body supported on three triangular feet and set with two rope shape handle at the rim, covered overall with iron-red bats amongst ruyi clouds. Diam: 13.5cm H: 6cm

\$200-400



**127**  
LATE QING FAMILLE-VERTE  
'FIGURAL' DISH  
晚清 五彩人物碟

Enamelled to the interior with a lady resting on rockery watching three boys and a cat playing, all set within a garden landscape detailed with palm tree and scholar rock. Diam: 20.5cm

\$200-400



**128**  
LATE QING GREEN GROUND  
FAMILLE-ROSE 'PEACH' DISH  
晚清 青地粉彩寿桃碟

Painted with nine ripe peaches borne on a flowering, leafy bough and two flying bats, depicting with a scholar rock and Ganoderma, a blue painted seal at the base. Diam 17.5cm

\$200-300



**129**  
REPUBLIC PERIOD YELLOW  
GLAZED HU  
民国 黄地暗刻纹鹿耳尊

Of pear shape, slip-decorated around the exterior with dragon surrounding with clouds, applied at the shoulder with a pair of deer-head handles and covered overall with a green glaze, base with a six-character blues seal mark. H: 11.5cm

\$300-500



**130**  
REPUBLIC PERIOD FAMILLE-  
ROSE VASE  
民国 双狮耳粉彩赏瓶 《大清  
光绪年制》款

Of pear form with a waisted neck rising to a flared rim, all supporting on a short straight foot, applied at the shoulder with a pair of lion-head handles, base with six-character seal. H: 23cm

\$200-400



**131**  
A PAIR OF COPPER-RED GLAZED  
'DRAGON' TEACUP  
白地矾红云龙戏珠纹杯一对  
《大清光绪年制》款

Each finely potted with rounded sides rising steeply from a short foot to a slightly flared rim, inscribed to the base with a six-character reign mark within a double square. H: 6.3cm each

\$2000-3000



**132**  
A SHIWAN GLAZED POTTERY  
ZHONGKUI FIGURE  
钟馗接福 石湾人物像

A Shiwan glazed pottery walking figure, depiction a burly man holding a Ruyi in his right hand, his body slightly leaning forward with eyes and mouth open big toward the front, the figure is wearing red cloth with gold highlights, could be possibly depicting Zhong Kui. 40cm x 20cm

\$400-700



**133**  
A SHIWAN GLAZED POTTERY  
FIGURE OF LIBAI FIGURE  
李白 石湾人物像

A Shiwan glazed pottery sitting figure, could be possibly depicting Li Bai, sitting on a stone and leaning on an alcohol container, wearing a red cloth and a black hat, with a white wine cup holding in his right hand. 26cm x 24cm

\$400-700



**134**  
A SHIWAN GLAZED POTTERY  
FIGURE OF SITTING ZHONGKUI  
钟馗 石湾人物像

A Shiwan glazed pottery sitting figure, with one leg stepping on the ground and the other on the stone, left hand holding a wine cup right arm rest on his right leg, wearing red cloth with some yellow highlights. 34cm x 30cm

\$400-700



**134A**  
NE ZHA' PORCELAIN FIGURE,  
REPUBLIC PERIOD  
民国 哪吒闹海雕瓷

Depicting the story of Nezha Conquers the Dragon King. H: 23cm

\$300-500



**135**  
A WHITE JADE 'DRAGON AND  
PHOENIX' PENDANT, QING  
清代 白玉龙凤呈祥佩

Skilfully pierced and carved in elaborate openwork, the jade carved with dragon and phoenix with interlaced florals, the pattern carved carefully on both side, the stone of even creamy white tone. W: 9.2cm L: 8.1cm H: 0.7cm

\$1000-1500



**136**  
A WHITE AND RUSSET JADE  
'DRAGON' PENDANT, LIAO  
辽代 白玉云龙纹玉佩

Of oval form, carved with dragon writhing amidst trailing cloud scrolls, the stone of pale celadon-white tone highlighted with russet skin. 9.5cm x 7.4cm x 0.9cm

\$700-1200



**137**  
ANCIENT JADE CONG HAN DYNASTY PERIOD

汉代玉琮

Of square cross-section carved with cylindrical apertures extending to form the rim and foot, with four sections of raised horizontal bands or elements of trigrams, the stone of white and russet tone.

\$1000-2000



**138**  
A JADE SWORD FITTING, HAN DYNASTY

汉代剑扣

Of characteristic form with a rectangular top and incurved ends resting on a square lug, carved to the top surface with rows of raised bosses, the stone of white tone with brown inclusions along the edges.

\$500-1000



**139**  
A PAIR OF FAMILLE ROSE HAT STANDS

开光粉彩帽筒一对 《同治年制》款

A pair of famille rose hat stands, of cylindrical form pierced with ruyi-shaped holes, painted with bogu "hundred antiques" including precious archaic objects, jardinières and flower, the base inscribed with six-character Tongzhi seal mark. H:28cm Diam:12.7cm Each.

\$700-1200



**140**  
AN 18TH CENTURY OCTOGONAL PEAR-SHAPE FLAMBE VASE

十八世纪 窑变釉八角瓶

The body of octagonal pear shape, rising from a short spreading foot to the tall straight neck, covered overall with a rich red glaze of crushed strawberry tone, with white streaks thinning to as pale buff tone at the rim and edges, the drilled base and interior glazed white, accompanied with a fitted wooden stand. H: 37.5cm

\$2000-3000



**141**  
A PAIR OF CLOISONNE VASES  
景泰蓝花瓶一对

Of globular body rising to a waisted neck with a straight mouth rim, all supported on a straight foot, the body decorated with peacock, bird, and flowers. H:17.5cm

\$200-400



**142**  
A 'LI GUI' TIANHUANG 'FIGURE AND LANDSCAPE' SEAL

清“李圭(1842-1903)”田黄乌鸦皮印《小池》款印文《心造》

Of rectangular section, the shaft thinning irregularly towards the top, finely carved in low relief with figures and landscape with signature 'Xiao Chi'. H: 3.5 cm Weight: 29 grams

\$300-500





**143**  
A 'PU XINYU' TIANHUANG  
'DRAGON' SEAL REPUBLIC  
民国 "溥心畲 (1896-1963)"  
田黄刻龙钮印 《西山逸士》  
款 印文: 《心畲》

Of upright rectangular section, the seal face carved with a two-character seal, the stone of a variegated warm amber-honey colour. H:4.6cm Weight:14 grams

\$400-800



**144**  
A 'GAO SHIXIAN' TIANHUANG  
SEAL  
民国 "高时显 (1978-1952)"  
田黄梅兰竹纹印 《乙酉中冬  
野侯刻》款 印文: 《月下听琴》

The well-patinated rich caramel-yellow soapstone of natural pebble form, the seal face carved with four-character seal. H: 5.9cm Weight 65.9 grams

\$400-800



**145**  
A RECTANGULAR 'CROCUS'  
CINNABAR LACQUER BOX  
19 世纪 剔红雕漆番花纹长方  
盖盒

Of large rectangular form, the flat upper surface with carved interlaced crocus, the sides carved with similar patterns, the interior and base lacquered black. L:9.3cm W:15.4cm H:4.3cm

\$300-600



**146**  
SQUARE INK STONE  
方形端砚

The black inkstone of square form with rounded corner, interior carved with a deep circular water pool, inscribed on the cover with signature. 14.5cm x 14.5cm x 4cm

\$200-400



**147**  
A BRONZE SENSOR WITH LOTUS  
LEAF STAND  
铜炉带座

The sensor of compressed globular form, with two handles attached on the mouth rim, all supported on three tapered feet, accompanied with a fitted lotus leaf-like stand, the sensor has a carved six-character seal on the bottom. H:105cm with stand, D:11cm

\$400-700



**147A**  
NINE-DISHES SET, LATE QING  
晚清 九子果盒

The set comprising nine shaped dishes with a fitted wooden container and a glass cover. 28cm x 28cm

\$500-1000



**148**  
A FAMILLE ROSE 'CONG' VASE  
粉彩琮瓶

The famille-rose Cong type vase, of rectangular form with a rounded foot and mouth, mock elephant head and ring handles at the sides, decorated with figures within a landscape scene, plum blossom, orchid, and calligraphy. 33cm x 13cm x 13cm

\$500-800



**149**  
A PAIR OF CARVED 'FIGURAL' SHELLS, REPUBLIC PERIOD  
晚清 贝雕人物故事摆件一对

A pair of carved shells, the interior of the shells vividly depicting figures within an outdoor scene, with river, trees and pavilion, one of the shells has a chip on the edge. 21.5cm x 18cm each

\$700-1200



**150**  
A JADE BERGAMOT, 18TH CENTURY  
十八世纪 白玉佛手

Depicting bergamot, the stone of celadon tone, with some russet inclusions at the end. L:7cm

\$1500-2500



**151**  
A JADE PLAQUE, REPUBLIC PERIOD  
白玉 '玉堂锦绣' 玉佩

A jade plaque, one side carved with mythical beast, the reverse carved with four-character seal. L:5.5cm

\$800-1200



**152**  
A JADE BUDDHA PENDANT, REPUBLIC PERIOD  
白玉观音

The jade buddha pendant depicting Guanyin, the stone of celadon tone, with russet inclusions L:8cm

\$2000-3000



**152A**  
A WHITE JADE ARCHAISTIC VASE AND COVER  
白玉雕双耳瓶

Superbly worked after ancient bronze vases, the flattened vase of pear-shape body with two beast head handle attached on the side, accompanied with a fitted wooden stand. 13.3cm x 9cm

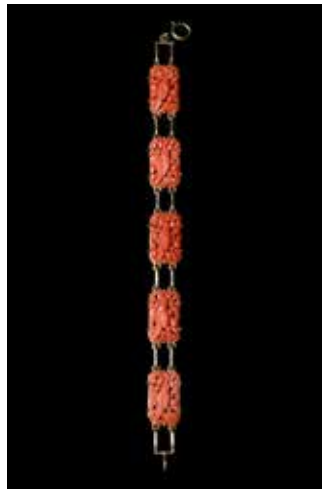
\$3000-5000



**153**  
A CORAL BEADS NECKLACE  
意大利珊瑚圆珠挂链

The necklace composed of coral beads with various sizes. Perimeter:52cm

\$2000-3000



**154**  
A CORAL BRACELET  
珊瑚 K 金手链

The bracelet is composed of five pieces of corals, all carved with a bird within branches, all of the five corals with the same design, connected by gold pieces. Perimeter:18.5cm

\$600-1000



**155**  
A SET OF EMERALD BRACELET  
AND EARRING  
翡翠手链耳环一套

A set of two pieces of earrings and a bracelet, with similar design inlaid with emerald which covered by silver decoration. 2cm x 4cm; Perimeter:20cm

\$700-1200



**156**  
EMERALD PENDANT  
翡翠雕花花牌

The emerald pendant carved with bat and branches, of a ring shape, the stone of green tone. D:5cm

\$400-700



**156A**  
YUN ZHU (1771-1833), FAN  
恽珠 (1771-1833) 金笏扇  
面连框

Calligraphy, Title by the artist with one artist's seal, Ink on golden paper. 66cm x 32cm

\$1000-2000



**157**  
 QIAN SHOU TIE (1897-1967)  
 AND LIU BO NIAN (1902-1990),  
 BUDDHA, HANGING SCROLL  
 钱瘦铁 (1897-1967) 刘伯年  
 (1902-1990) 合作佛像 设色  
 纸本 挂轴

Depicting a Buddha sitting on a circular mat, signed Qian Shou Tie and Liu Bo Nian, with three artist's seals, color and ink on paper, hanging scroll. 13cm x 31cm without frame

\$800-1000



**158**  
 LIN YONG (1942-), LADY,  
 HANGING SCROLL  
 林壖 (1942-) 仕女人物 设  
 色纸本 挂轴

Depicting a standing lady, signed Lin Yong, with two artist's seals, color and ink on paper, hanging scroll. 81cm x 32.5cm without frame

\$3000-5000



**159**  
 LIANG BO YU (1903-1978),  
 LANDSCAPE AND PAVILLION,  
 HANGING SCROLL  
 梁伯誉 (1903-1978) 茅斋读  
 易图 设色纸本 挂轴

Depicting a man sitting in a pavilion within a landscape, signed Liang Bo Yu, with two artist's seals, color and ink on paper, hanging scroll. 93cm x 37cm without frame

\$800-1200



**160**  
SHI QI, GODDESS OF MERCY  
石齐 (1939-) 观音

Depicting the head of Goddess of Mercy, mix medium, signed Shi Qi, with one artist's seal. 56.5cm x 64cm

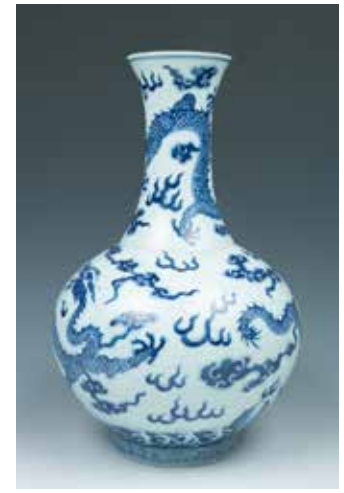
\$3000-5000



**161**  
A PAIR OF FAMILLE-ROSE VASES  
绿地粉彩双耳大瓶对 同治款

The two vases both of tapered form rising to a waisted neck and an everted mouth, the body painted with peacock, Phoenix, poney, lotus, and plum blossom, all against a green ground, the neck attached with modeled beasthandle and the base with eight-character Tong Zhi seal. H:58cm

\$700-1200



**162**  
A BLUE AND WHITE VASE  
青花龙纹天球瓶 《大清同治  
年制》款

The blue and white vase, of globular body rising to a long waisted neck with an everted mouth, all supported by a straight cylindrical foot, the body decorated with dragons in pursuit of flaming pearls amidst flames and cloud scrolls above crashing waves, all above a band of fret pattern, the base with six-character Tong Zhi seal. H:39cm

\$1000-2000



**163**  
A PAIR OF YELLOW GROUND  
'BEAST' PLATES  
黄地龙纹小碟一对 《大清光  
绪年制》款

The two small dishes, the interior center decorated with two green beasts in pursuit of flaming pearls amidst flames, against a yellow ground, the exterior decorated with a similar design, the base with six-character Guang Xu seals. D:15.6cm each

\$200-400



**164**  
A "PLUM BLOSSOM' JAR  
冰梅小罐

Of globular form, the body decorated with white plum blossom against a dark blue ground, the short cylindrical mouth surrounded by a band of lines. D:12cm H:12cm

\$100-200



**165**  
A PAIR OF BLUE AND WHITE  
'INTERLACE FLORAL' JARS  
青花缠花纹小罐对 《成化年  
制》款

Of baluster form, decorated in rich, inky underglaze-blue with an interlaced floral design, the fitted cover decorated with a similar pattern, the base with a blue four-character Cheng Hua seal. H:23.5cm

\$400-700



**166**  
A SET OF THREE WATER POTS  
小水盂一套三件

The set composed of a green glazed double-gourd shape water pot, a white dog-shape water pot, and a green glazed beast-shape water pot. W:7.5cm; 7.5cm; 9.5cm

\$500-800



**167**  
A GREEN JADE BOWL WITH  
STAND  
碧玉碗 带座

The bowl with the deep rounded sides sweeping up from a straight foot to an everted rim, the exterior decorated with bamboo weave patterns, the bowl accompanied with a fitted wooden stand. D:16cm

\$600-1000



**168**  
A CORAL CARVED FIGURE WITH  
STAND  
沙丁红珊瑚雕件

The coral of pink tone, carved with two female figures and a child, with a dragon among clouds, the coral attached to a fitted wooden stand. W:30cm H:18cm

\$1500-2500



**169**  
A QINGTIAN SOAPSTONE SEAL  
“来楚生” 青田石蓝星方章

Of rectangular form, the Qingtian soapstone seal with the stone of celadon tone with blue dots, accompanied with a fitted box. H:6.3cm

\$300-600



**170**  
A FURONG SOAPSTONE SEAL  
“赵之琛” 刻字山红芙蓉曾钮

Of circular form, the Furong soapstone seal curved with a mythical beast on the top, accompanied with a box. H:4.4cm

\$300-600



**171**  
POTTERY ROOF FIGURAL  
ARCHITECTURAL ORNAMENT  
明 彩绘雕塑瓷构件

The pottery architectural ornament with rich color, depicting a scene of figures watching a Chinese Opera. 63.5cm x 82.5cm x 30cm

\$3000-5000



**172**  
**A SET OF ELM DESK AND CHAIR**  
**榆木桌椅一套**  
 The desk with a rectangular top suspending a row of four drawers and supported on four legs, with a low open trelliswork shelf, accompanied with a horseshoe back armchair. Desk: 63.5cm x 82.5cm x 30cm Chair: 93cm x 61.5cm x 60cm

\$500-1000



**173**  
**A HARDWOOD CURVED SCREEN**  
**硬木巧雕屏风**  
 A four-panel screen, comprised of four rectangular panels carved and pierced with decorations. 222.5 x 55 each panel

\$300-500



**174**  
**A PAIR OF SUANZHI RECLINING ARMCHAIRS W/ TABLE**  
**清酸枝木躺椅一对带高低几**  
 A pair of Suanzhi rosewood reclining armchairs with a matching table, end of Qing dynasty, the chair with a curved back splat with a floating panelled seat, the table with two conjoined rectangular stands with different heights, the slender legs are connected with shaped stretchers, chair height 82 cm, length 95 cm, table height 76 cm, length 66 cm

\$3000-6000



**175**  
**A RARE INLAID CINNABAR LACQUER SCREEN**  
**70-80年代剔红百宝嵌屏风**  
 A magnificent inlaid cinnabar lacquer three-fold throne screen, each panel inlaid with semi-precious stones including lapis lazuli, amethyst, mother-of-pearl, coral, carnelian, jade and agate, the back painted with cranes, flowers and birds, bamboo and rocks on black-lacquered ground, height 200 cm, width 240 cm

\$10000-20000



**176**  
**A RED CORAL PENDANT AND A PINK CORAL BROOCH**  
**珊瑚胸针及挂件**  
 A red coral pendant and a pink coral brooch, the pendant carved with portrait of a Japanese woman in low relief, the brooch portraying a floral spray, W: 23.59 mm (pendant) L: 57.23 mm (brooch) 19.5 grams both

\$200-400



**177**  
**A PAIR CELADON JADE CHILDREN**  
**绣玉人物摆件一对**  
 Depicting two girls holding ingots while hanging an illusion of copper coins over their shoulder, overall of a green tone, one with russet at the end of the dress, accompanied with a fitted wooden stand. H: 7.5cm each without the stand.

\$300-500



**178**  
A SET OF THREE CELADON JADE FIGURES AND RABBIT  
青白玉雕摆件一组

A set of three jade figures and animal, depicting Longevity God holding a peach along with a deer, a rabbit, and two boys holding Ruyi and copper coins, overall of green and white tone. H: 2.4cm & 5cm & 7.5cm without stand.

\$300-500



**179**  
CELADON JADE BEADED NECKLACE  
青绿珠串

The translucent stone of a pale celadon colour, the long necklace strung with round beads of unified size, the stones of pale celadon colour. Perimeter: 99cm

\$200-400



**180**  
A SET OF THREE PENDANTS  
翡翠饰件三件

The set composed of three objects: Of cicada shape resting on a leaf, of green and russet colour, reverse carved with leaf marks. 3cm x 5cm; Of circular form, the stone of bluish-green color D:5.5cm; Carved with a Guan Gong, the stone of red tone. 4cm x 2cm

\$300-500



**181**  
LANDSCAPE OIL PAINTING  
田园风光 油画

Oil on Canvas. 24cm x 16cm

\$200-300



**182**  
THE FAMILLE-ROSE MILLE FLEURS PLATE  
百花不落地盘 《大清乾隆年制》款

Painted on the interior and exterior in famille-rose enamels with a dense profusion of flowers arranged in an overall scroll pattern, the base with six-character Qian Long seal in iron red. D:18cm

\$500-800



**183**  
FANG CHU XIONG (1950-), SNOW  
方楚雄 (1950-) 初雪 镜心 设色纸本

Depicting two squirrels playing on a scholar's stone which covered with snow, and two branches of red berries, signed Fang Chu Xiong, with one artist's seal, ink and color on paper. 68.5cm x 57cm

\$2000-4000





**184**

DING YAN YONG (1902-1978), BAMBOO AND BIRD

丁衍庸 (1902-1978) 竹鸟 水墨纸本

Depicting bamboo and a bird, titles and signed Ding Yanyong with one artist's seal, ink on paper. 109cm x 38cm

\$2000-4000



**185**

YAN MEI HUA (1927-), MONKEYS

颜梅华 (1927-) 双猴图 设色纸本

Depicting monkeys hanging on a tree, with red berries, signed Yan Mei Hua, with two artist's seals, color and ink on paper. 48cm x 78cm

\$2000-4000



**186**

ZHAO SHAO ANG (1905-1998), BAMBOO AND BIRD

赵少昂 (1905-1998) 墨竹小鸟 镜心 设色纸本

Depicting a bird resting in bamboo, signed Zhao Shao Ang, with two artist's seal, color and ink on paper. 42cm x 36cm

\$2000-4000



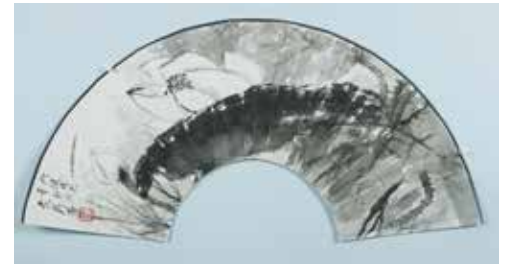
**187**

MI CHUN MAO (1938-), BUTTERFLY AND CAT

米春茂 (1938-) 猫蝶图 镜心 设色纸本

Depicting a cat standing on a scholar's stone observing a butterfly, with chrysanthemum and bamboo, signed Mi Chun Mao, with one artist's seal, color and ink on paper. 32cm x 54.5cm

\$800-1200



**188**

TANG YUN (1910-1993), LOTUS  
唐云 (1910-1993) 墨荷扇面 设色纸本

Depicting lotus blossom and lotus leaf, signed Tang Yun with one artist's seal, ink on a fan.

\$2000-4000



**189**  
CHENG SHI FA (1921-2007),  
CALLIGRAPHY  
程十发 (1921-2007) 书法对联  
水墨纸本 卷轴

A pair of calligraphies by Cheng Shi Fa, signed by the artist with two artist's seals, ink on paper. 33cm x 136cm each

\$2000-4000



**190**  
A PAIR OF 'FIGURAL' VASES  
清代刀马人物双耳对瓶 “成化” 款

A pair of big figural vases, the body of cylindrical form rising to a waisted neck and an everted mouth, the body decorated with figures and brown glaze handle, the unpainted base reveals the crackles and with a brown seal on each vase. H:45cm

\$1500-2000



**191**  
A PAIR OF BLUE AND WHITE  
'FLORAL' PLATES  
青花小碟对

The two small plates, interior decorated with a flower in the middle surrounding by a band of interlaced floral design, the base with six-character blue seal. D:17cm

\$200-400



**192**  
A SOUPSTONE FIGRUE WITH  
STAND  
寿山石人物雕件

The stone of triangular form, carved with an old man, the stone of creamy tone, accompanied with a fitted wooden stand. H:10cm with stand

\$300-500



**193**  
ONE CELADON JADE PLAQUE  
WITH MATCHING WOOD STAND  
貔貅碧玉摆件

One celadon jade plaque with matching wood stand, of ruyi-head silhouette, carved in high relief with a crouching mythical beast Bixie atop another beast standing foursquare with mouth agape, the stone of pale greencolour, H: 21 cm, W: 16.5 cm without stand

\$50-100



**194**  
A PAIR OF WOOD DOOR PANELS  
金木雕板一对

The two wooden panels lacquered red, with gilt leaf decorations, the middle with a vase-shape cut out, the top with extended wood pieces, could be used as a door panel. 26.5cm x 48.5cm

\$50-100



**195**  
A LARGE TURCO PERSIAN RUG  
地毯

A large Turco Persian rug, of rectangular section, decorated with European style floral emblem framed by a similar border, reserved on yellow ground, 9' x 6'

\$50-100



**196**  
WOOD CARVING GUANDI  
木雕关帝像

Depicting Guan Gong standing mightily on a scholar's stone, with the left hand grabbing his beard and the other hand fist behind his back, all supported on a square base. H:14.5cm

\$50-100



**197**  
A PORCELAIN SLEEPING BOY  
睡童瓷像

Vividly depicting a sleeping boy, facing down sleeping on a wood-like bed. 22cm x 22cm x 14cm

\$50-100



**198**  
A SET OF TWO FAMILLE ROSE  
PORCELAINS  
粉彩瓷器一组两件

The set comprising of a plate and a bowl with cover, the plate decorated with scholar's stone, chrysanthemums, a bird and calligraphy, the bowl and cover decorated with a similar pattern and with figures within exterior scene and calligraphy, both porcelain bottoms with four-character red seal. D:21.5cm H:5.5cm; H:2.5cm

\$50-100



**199**  
A BLUE GLAZE VASE  
蓝釉小瓶

With compressed ovoid body, rising to a waisted neck and an everted mouth, all supported on a straight cylindrical foot, body, and interior covered with blue glaze, the base with four-character seal. H:15cm

\$50-100



**200**  
A WOOD CARVED HANGING  
PIECE  
木雕人物挂件

Carved with a human figure holding a vertical flute, vividly depicted facial details and draperies, a hook attached at the back. 48cm x 13cm x 14cm

\$50-100



**201**  
A BLUE AND WHITE PORCELAIN  
JAR

**青花小罐带盖**

The small blue and white jar of globular form, the body decorated with an interlaced floral design and a double Xi on two sides, accompanied with a fitted cover with a small knob in the middle, the cover with a small chip on the edge. H:15 cm

\$50-100



**202**  
A GUANYIN INK CAKES SET  
**观音八善套墨**

A set of eight ink sticks, painted with eight versions of Guanyin, each with a unique shape and color, the reverse carved with the name of the Guanyin, and the side carved with the maker's name - "Cheng Junfang", accompanied with a fitted box. 29cm x 19.5cm x 2cm

\$50-100



**203**  
AN EIGHT SCHOLARS INK  
CAKES SET

**唐宋八大家套墨**

A set of eight ink sticks, painted with the eight great scholars between Tang and Song Dynasties, the reverse incised with the scholar's brief introduction, and the side carved with 'Cheng Junfang', accompanied with a fitted box. 28cm x 18.5cm x 2cm

\$50-100



**204**  
THE SHEN YAO INK CAKES SET  
**神尧勤耕图套墨**

A set of eight ink sticks, painted with the story of Shen Yao working in the field, the reverse carved with calligraphy, and the side carved with 'Hu Kaiwen' and 'Liang Huai Gong Mo,' accompanied with a fitted box. 22cm x 31cm x 2.5cm

\$50-100



**205**  
A PAIR OF GILT QILIN WOOD  
FIGURES  
**老木雕麒麟一对**

A pair of gilt wood figures, depicting seated Qilin mythical beasts on rectangular base, covered in gilt red lacquer, height 110 cm each

\$50-100



**206**  
A SMALL ALTAR CABINET  
**八十年代花梨翘头小案**

The plain rectangular top with flared end pieces, over an apron composed of three drawers mounted with handles, all above a cupboard, the two doors spreading slightly to the base, the sides with shaped and pierced flanges. 126.5cm x 96.5cm x 64.5

\$50-100



**207**  
A PAIR OF FLOWER AND BIRD  
EMBROIDERY

花鸟刺绣一对

The two embroidery paintings embroidered with bird and flower theme. 76cm x 35cm each

\$50-100



**208**  
SHAN BOQIN (1936-),  
DEPICTION OF A LADY

单伯钦 (1936-) 醉翁嗣意图 设色纸本

Depicting a lady standing among leaves; titled and signed Shan Boqin, with four artist's seals; color and ink on paper, framed. 135cm x 67cm

\$50-100



**209**  
A SET OF THREE BRUSHPOTS  
笔筒一组三件

H: 13.5cm x 11.5cm x 13cm

\$50-100



**210**  
A SET OF FOUR JADE CARVED  
FIGURES

玉雕人像带座一组四件

H: 19.3cm x 21cm x 13.5cm x 18.5cm without stand

\$50-100



**211**  
A SET OF TWO WOOD CARVED  
FIGURES

木雕人像一组两件

H: 31cm x 43cm

\$50-100



**212**  
A SET OF THREE ZISHA  
TEAPOTS

紫砂茶壶一组三件

12cm x 6.7cm; 14cm x 8cm; 10.1cm x 7.5cm

\$50-100



**213**  
A SET OF FIVE STONE CARVED  
OBJECTS  
石雕塑一组五件  
Highest H: 23cm

\$50-100



**214**  
A SET OF TWO PAIRS OF PAPER  
WEIGHT & CHOPSTICKS  
黄花梨镇纸等共三组  
Paper weight: L: 24cm each; 17.7cm each;  
Chopstick: L:25cm (box)

\$50-100



**215**  
A SET OF SCHOLAR'S ROCKS  
WITH STAND  
赏石带底座一组  
H:17cm; 20cm; 20cm with stand

\$50-100



**216**  
AN ENORMOUS TEAPOT  
多蜜罗波岩般卷大茶壶一个  
36.5cm x 10cm x 26cm

\$50-100



**217**  
A WOOD ALTAR TABLE  
硬木翘头小案  
40.5cm x 84cm x 121.5cm

\$50-100



**218**  
A CIRCULAR PORCELAIN PLAQUE  
瓷板挂屏  
D:32cm; 40.5cm x 40.5cm

\$50-100



**219**  
A WOOD SCREEN  
木雕屏风

Composed of four panels, each H:32.5cm  
panel:45cm x 79cm

\$50-100



**220**  
A FAMILLE-ROSE VASE  
粉彩双耳瓶

\$50-100



**221**  
A GROUP OF FOUR ROCKS  
赏石一组

Highest H:24cm

\$50-100



**222**  
A FINE TALL-CASE CLOCK  
立钟

H:183cm

\$50-100



**223**  
A PAIR OF YELLOW VASES  
黄地粉彩人物故事大花瓶一对

H:81cm each

\$50-100



**224**  
A GROUP OF TWO ZHANG DAQIAN  
PRINT COPIES  
张大千画作复制件连框一组  
两件

68cm X 34.5cm, 48cm X 38cm

\$50-100



**225**  
A PAIR OF LARG LACQUERED  
VASES  
老大漆描绘故事人物赏瓶一对

A pair of red lacquered vases, of baluster form, painted with rectangular panels of landscape on red ground, with abraded mouth and foot rim, height 132 cm, diameter 64 cm each

\$50-100



**226**  
BRONZE GUANYIN FIGURE  
铜观音像

A bronze Guanyin figure, seated in lalitasana on a double lotus base with beaded rims, with the right leg resting on an extended lotus blossom, the hands in vitarkamudra, adorned in various jewelry and flanked by lotus blossoms at the shoulders, the serene face surmounted by a foliate tiara, overall covered in patina, height 58 cm, width 31 cm

\$50-100



**227**  
A LARGE GREEN JADE MOUNTAIN  
玉石山子带座

A large green jade mountain, of emerald green tone with white inclusions, accompanied with fitted wood stand, height 19.5 cm, weight 3535 grams

\$50-100



**228**  
A CIRCULAR TIGER MARBLE  
SCREEN YANG CHUNFENG MARK  
大理石立屏 虎 王觉刻 杨春风  
题字

A marble screen, of circular form with rectangular stand, incised with a painting of crouching tiger, signed by the artist Yang Chunfeng, diameter 76.5 cm

\$50-100



**229**  
AN ENORMOUS SCHOLAR'S  
ROCK  
赏石

An enormous scholar's rock, of boulder form, with irregular craggy surface, accompanied with fitted wood stand, height 46 cm, width 59 cm

\$50-100



**230**  
A HARD WOOD DISPLAY SHELF  
硬木博古阁

A wood display shelf, divided into open compartments of varying sizes, decorated with borders of scroll ends, height 91 cm, width 144 cm

\$50-100





**231**  
 A GILT LACQUERED CARVED BUDDHA FIGURE  
 硬木雕布袋和尚  
 A large wood figure, carved with a standing laughing Buddha, covered in gilt lacquer, height 117.5 cm

\$50-100



**232**  
 A PAIR OF JAPANESE STYLE NEEDLEPOINT FIRE SCREENS  
 日式刺绣立屏一组两件  
 A pair of Japanese style needlepoint fire screens. 106cm x 91.5cm; 111cm x 93cm

\$50-100



**233**  
 A SET OF AFRICAN HUANGHUALI FURNITURE WITH STOOLS  
 二十世纪非洲黄花梨桌椅一套  
 A set of Africa huanghuali table with four square-shaped stool, table 89.5 cm x 89.5 cm x 81 cm, stool 37.5 cm x 37.5 cm x 48 cm

\$50-100



**234**  
 AN OLD JAPANESE IRON TEAPOT  
 日式铜壶  
 An old Japanese iron teapot, of square shape body, height 9 cm.

\$50-100



**235**  
 A PAIR OF BRONZE CRANE FIGURES  
 铜立鹤一对  
 A pair of gilt bronze figures, depicting cranes standing on the back of turtles, the body with several patina rust spots, height 124 cm each

\$50-100



**236**  
 JADE CARVED FLOWER FIGURE  
 绣玉花朵雕件  
 H: 24.5cm without stand

\$50-100



**237**  
JADE QILIN BEAST  
麒麟玉石雕件  
H:13.5cm without stand

\$50-100



**238**  
A JADE CARVED FISH  
绣玉鱼雕件  
H:2.5cm

\$50-100



**239**  
A SET OF TWO AGATE  
OBJECTS  
琥珀两件  
11cm x 24cm (Large One)

\$50-100



**240**  
AMETHYST 'FIGURAL'  
AGATE CARVED  
OBJECTS  
紫晶玛瑙人物雕件两  
件  
H:13.5cm without stand

\$50-100



**241**  
JADE CARVED DRAGON  
绣玉龙雕件  
H:16cm without stand

\$50-100



**242**  
AMETHYST BUDDHA FIGURE  
紫晶笑佛雕件  
7.5cm x 12.5cm without stand

\$50-100



**243**  
PINK CRYSTAL 'BIRD'  
粉晶小鸟雕件  
10cm x 17.5cm

\$50-100

# TERMS & CONDITIONS

## STUNNING ARTS GALLERY AND AUCTION INC AS AGENT

The lots listed in this catalog will be offered by Stunning Arts Gallery and Auction Inc as owner or as agent for consignor(s) subject to the following terms and conditions. By bidding at auction you agree to be bound by these Conditions of Sale.

### BEFORE THE AUCTION

Prospective buyers are strongly advised to personally examine any property in which they are interested before the auction takes place. All lots are sold "AS IS" and without recourse and neither Stunning Arts Gallery and Auction Inc nor its consignor(s) makes any warranties or representations, express or implied with respect to such lots. No statement, whether written or oral, and whether made in catalog, or in supplements to the catalog, an advertisement, a bill of sale, a saleroom posting or announcement, the remarks of an auctioneer, or otherwise, shall be deemed to create any warranty, representation or assumption of liability. It is the responsibility of prospective purchasers to inspect or have inspected each lot upon which they wish to bid, relying upon their own advisers, and to bid accordingly.

### BIDDING IN THE SALE

Refusal of Admission Stunning Arts Gallery and Auction Inc has the right, at our complete discretion, to refuse admission to the premises or participation in any auction and to reject any bid.

#### Registration before Bidding

A prospective buyer must complete and sign a registration form and provide identification before bidding. We require bank or other financial references.

#### Bidding as Principal

To bid in person, the bidder will need to register for and collect a numbered paddle before the auction begins. Proof of identity will be required. Should you be the successful buyer of a lot, please ensure that your paddle can be seen by the auctioneer and that it is your number that is called out. All lots sold will be invoiced to the name and address in which the paddle has been registered and cannot be transferred to other names and addresses. When making a bid, a bidder is accepting personal liability to pay the purchase price, including the buyer's premium, all applicable taxes and all other applicable charges.

#### Absentee Bids

If the bidder cannot attend the auction, we will be happy to execute written bids on your behalf. Absentee bids in writing must be submitted to Stunning Arts Gallery and Auction Inc at least 24 hours prior to the sale by letter or fax. In the event of identical bids, the earliest received will take precedence.

#### Reserves

Each lot may be subject to an unpublished reserve which may be changed at any time by agreement between the auctioneer and the consignor.

#### Auctioneer's Discretion

The auctioneer has the right at his or her absolute and sole discretion to refuse any bid, to advance the bidding in such a manner as he or she may decide, to withdraw any lot, and in the case of error or dispute, and whether during or after the sale, to determine the successful bidder, to continue the bidding, to cancel the sale or to re-offer and resell the item in dispute. If any dispute arises after the sale, our sale record is conclusive.

#### Successful Bid

The highest bidder acknowledged by the auctioneer will be the purchaser. In the case of a tie bid, the winning bidder will be determined by the auctioneer at his or her sole discretion. In the event of a dispute between bidders, the auctioneer has final discretion to determine the successful bidder or to re-offer the lot in dispute.

### AFTER THE SALE

#### Buyer's Premium

In addition to the hammer price, the buyer agrees to pay Stunning

Arts Gallery and Auction Inc a buyer's premium and the applicable sales tax added to the final total. Each lot sold is subject to a premium of 20% of the successful bid price of each lot up to and including \$50,000 and 18% on any amount in excess of \$50,000 as part of the purchase price. Online bidding is subject to a 23% buyers premium.

#### Deposit

The contact information provided by the purchase must be accurate and true. The auctioneer reserves the right to request a deposit to be provided before bidding and will be used against any and all purchases made at the auction.

#### Taxes

Unless exempted by law, the buyer is required to pay HST on the total purchase price including buyer's premium. For international buyers, taxes are not applicable when purchases are shipped out of country. Items shipped out of Ontario, the buyer is required to pay taxes as per the tax status of that province, whether is HST or GST.

#### Payment

Immediately after the purchase of a lot, the buyer shall pay or undertake to the satisfaction of the auctioneer with respect to payment of the whole or any part of the purchase price requested by the auctioneer, failing which the auctioneer in his sole discretion may cancel the sale, with or without re-offering the item for sale.

The buyer shall pay for all lots within 7 business days from the date of the sale, after which a late charge of 2% per month on the total invoice may be incurred or the auctioneer, in his sole discretion, may cancel the sale. The buyer shall not become the owner of the lot until paid for in full. Items must be removed within 10 days from the date of sale, after which storage charges may be incurred.

Each lot purchased, unless the sale is cancelled as above, shall be held by the auctioneer at his premises or at a public warehouse at the sole risk of the buyer until fully paid for and take away.

Payment for purchases must be by cash, INTERAC direct debit (Canadian clients in person only), certified cheque (U.S. and Overseas not applicable), bank draft, electronic transfer (fee applies), and VISA or MASTER or AMERICAN EXPRESS card.

Should the item not be paid for within the time limit stated, the auctioneer, without limitation of the rights of the consignor and the auctioneer against the buyer, may resell any of the articles affected.

### SHIPPING

Shipping is provided at the buyers' expense. Stunning Arts Gallery will provide a list of shippers. The purchased items will be released with the buyers' written consent and until payment has been made in full. Shipping, packing and handling is at the entire risk of the buyer. SAG will have no liability of any loss or damage to such items.



# STUNNING ARTS GALLERY & AUCTION

## 竞投出价表 ABSENTEE/TELEPHONE BIDDING FORM

表格应以墨水笔填写，并电邮、邮寄或传真至本公司

FORMS SHOULD BE COMPLETED IN INK AND EMAILED, MAILED, OR FAXED TO THE AUCTION HOUSE

Name: 名字:				Telephone <input type="checkbox"/>	Absentee <input type="checkbox"/>
Phone: 联系电话:			Email: 电子邮件:		
Address: 地址:					
City: 城市:	Province: 省:		Postal Code: 邮编:		
Credit Card Number: 信用卡号码:				Expiry Date: 到期日期:	
Name on Card: 持卡人姓名:				CVV: 卡后三位安全码:	
Billing Address (if different): 账单邮寄地址:					

### IMPORTANT 重要事项

Please note that the execution of written and telephone bids is offered as an additional service for no extra charge, and at the bidder's risk. It is undertaken subject to Stunning Arts' other commitments at the time of auction. Stunning Arts, therefore cannot accept liability for failure to place such bids, whether through negligence or otherwise. 请注意书面及电话竞投是免费提供之附加服务，风险由竞投人承担，而该等服务会在本公司于拍卖时其他承诺之限下进行；因此，无论是由于疏忽或其他原因引致，本公司无需就未能做出该竞投承担责任。

### DEPOSIT 押金

All absentee bidder and telephone bidder are requested by Stunning Arts to deliver to Stunning Arts a deposit of CAD\$2,000 or such higher amount as may be determined by Stunning Arts, and any financial references, guarantees and/or such other security as Stunning Arts may require in its absolute discretion as security for the bid. 本公司可要求电话竞拍者以及最高单价竞拍者完成预先登记程序及交付本公司 2,000 加币或其他由本公司决定之更大金额的定金及任何财务状况证明，担保或/及其他由本公司可全权酌情决定要求的抵押作为参加本公司竞投的保障。

The contract between the buyer and the seller is concluded on the striking of the auctioneer's hammer, and payment of the purchase price for any lot and any buyer's expenses is due 7 business days after the conclusion of the auction. 买家及卖家之合约于拍卖官击锤时订立，而阁下作为买家必须于拍卖会结束后 7 个工作日支付拍卖品之买入价及任何买家费用。

NUMBER 编号	DESCRIPTION 名称	MAXIMUM BID 最高竞价
		CAD\$
		CAD\$
		CAD\$
		CAD\$
		CAD\$
		CAD\$
		CAD\$

### TELEPHONE NUMBER DURING THE SALE 拍卖联络电话：

#### FOR WRITTEN/FIXED BIDS 书面竞投

- Bids will be executed for the lowest price as is permitted by other bids or reserves. 竞投将以尽可能低之价格进行
- Where appropriate your written bids will be rounded down to the nearest amount consistent with the auctioneer's bidding increments. 如适当时，阁下之书面竞投价将会被大概调整至最接近拍卖官递增之竞投金额

#### FOR TELEPHONE BIDS 电话竞投

- Please clearly specify the telephone number on which you may be reached at the time of the sale, including the country code. We will call you from the saleroom shortly before your lot is offered. 请清楚注明于拍卖期间可联络阁下之电话号码，包括国家号码。我们会于阁下之拍卖品竞投前致电给阁下。

I agree that I am bound by the Condition of Business for Buyer and the Authenticity Guarantee which are published in the catalogue for the sale on purchases at auction that I make. If any bid is successful, I agree that all sales are subjected to a 20% buyer's premium added to the hammer price, 18% on any bids over CAD \$ 50,000. 本人同意接受图册内列明之给卖家的规则及保证书。是次拍卖会上的一切交易均受以上条款所约束。若竞投成功，本人愿意支付附加成交价之上的 20% 买家佣金，或以 50,000 加币以上成交的拍品之 18% 的买家佣金。

I consent to the use of this information and any other information obtained by Stunning Arts Gallery and Auction in accordance with the Guide for Absentee Bidders and Conditions of Business. I am aware that all telephone bid lines may be recorded. 本人同意 Stunning Arts Gallery and Auction 使用本人资料及根据给委托竞投者指引与给买家业务规则内而取得至其他资料。本人明白所有电话竞投会被录音。

SIGNED 签署 \_\_\_\_\_ DATE 日期 \_\_\_\_\_