



STUNNING ARTS GALLERY & AUCTION

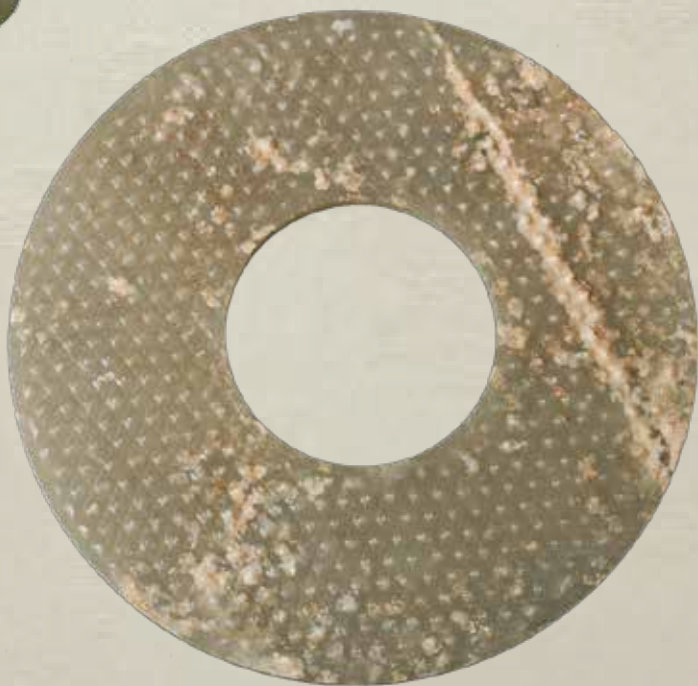
新年东方艺术拍卖会

NEW YEAR ASIAN ART COLLECTION AUCTION

2019.01.19 6:00PM



预览时间 PREVIEW DATE & TIME:
Jan 17th-18th 2019 [11:00AM - 6:00 PM]
Jan 19th 2019 [11:00AM - 2:00 PM]





**001
酸枝百鸟朝凤沙发八件套**

A SET OF EIGHT PIECES SUANZHI WOOD FURNITURE

A set of symmetrically carved in high relief furnitures decorated with various species of birds and plants and flowers pierced through with openwork key-fret pattern on the reverse back: the bench with 3 eight-lobe-ruyi stone inlaid and a fitted cushion; four chairs with beast arm handle carving; a pair of console table with an organic form stone inlaid; the coffee table with a lengthy stone inlaid. Bench: L:75cm, W:83cm, H:131cm; Chair (x4): L:57cm, W:74cm, H:107cm; Console table (x2): L:71cm, W:49cm, H:53.5cm; Coffee table: L:67cm, W:160cm, H:47cm

Estimate CA\$9,000 - CA\$13,000

**002
花梨木沙发八件套**

A SET OF EIGHT PIECES FURNITURE

A set of furniture finely carved in relief of figures and architectural scenery comprising of four rectilinear chairs and a rectilinear long chair in the similar style with crest rail, arm rails extending in outward to scrolling hand grips; a pair of tall slim console table; and a coffee table; Chairs x4: L:58cm, W:85.5cm, H:88.8cm; Long chair: L:58cm, W:215cm, H:88.8cm; Pair of console table: L:40.7cm, W:40.7cm, H:90.5cm; Coffee table L:50cm, W:119.5cm, H:45cm

Estimate CA\$3,000 - CA\$5,000



**003
民国 酸枝云石沙发四件套**

A SET OF FOUR PIECES SUANZHI FURNITURE REPUBLIC

The set of stone inlaid suanzhi wood furniture comprising a pair of chairs and a sofa with elaborated carved backrest, with cushions; a console table with two levels, Republican period. Pair of chairs: L:47.5cm, W:53cm, H:102.5cm; Sofa:L:64cm, W:165cm, H:128cm; Console table: L:37cm, W:49.5cm, H:86.5cm

Estimate CA\$2,500 - CA\$4,000



**004
晚清 酸枝化妆台**

SUANZHI WOOD DRESSING TABLE LATE QING

An oval shape mirror surmounted with floral openwork motif set in between two storage towers of a cabinet with "double happiness" carving door, shelves and a small pull out drawer, surmounted with beast carvings on the top, four pull out drawers of two sizes beneath the dressing table, late qing dynasty. L:61.23cm, W:123 cm, H:170cm

Estimate CA\$1,000 - CA\$1,500



**005
硬木小案**

HARDWOOD ALTAR TABLE

The single panel floating top and frame of attractively grained wood, over an associated base with openwork spandrel aprons and legs joined by a panel with fan shape cutout on either side. L:43cm, W:53.5cm, H:92cm

Estimate CA\$400 - CA\$600



006
清 白玉童子骑牛
JADE FIGURE RIDING AN OX, QING

Depicting a person on an ox pulling the rope, a mouse on the ground under the ox, the stone of celadon tone with russet inclusions, accompanied with a fitted box. H:7cm

Estimate CA\$800 - CA\$1,200



007
清 白玉镂空香囊
JADE PIERCED POMANDER, QING

Of a archaic hu form, intricately carved in openwork around the sides with a band of key fret related pattern sandwich between carving leaf and lotus base, celadon tone with russet inclusion, accompanied with a fitted box. L:2cm, W:6.3, H:6.5

Estimate CA\$1,500 - CA\$2,000



008
清 青白玉兽面纹双耳洗
BEAST BRUSH WASHER, QING

The walled vessel of a four-lobed ruyi form rising from a square foot, flanked with two carvings of beast head handles at the rim and beast symbol carved on the exterior, celadon tone with russet inclusions, accompanied with fitted box. L:6cm, W:12.5cm, H:3.7cm

Estimate CA\$1,000 - CA\$1,500



009
清 “事事如意” 玉把件
JADE LION PENDANT, QING

Depicting a carved lion with a ruyi in the mouth, four limbs positioned neatly under its belly and the tails coiled over to the back. W: 5.3cm, L:4.7cm

Estimate CA\$800 - CA\$1,200



010
白玉羊摆件
JADE CARVING OF A RAM

Depicting a kneeling goat carving with vivid gestures and detail horns, the stone of creamy white tone. L:5.5cm

Estimate CA\$300 - CA\$500



011
玉雕海兽
JADE BEAST CARVING

Depicting a recumbent beast finely carved in gently rounded form, with its head turned to the back, the stone of celadon tone with reddish-brown and russet inclusions. L:7.2cm

Estimate CA\$2,000 - CA\$3,000



012
玉挂饰
 JADE PENDANT

A jade carving of circular shape and irregular attachments, base with branches carvings, celadon tone with russet and white inclusions. W:4 cm

Estimate CA\$300 - CA\$500



013
清 白玉环
 JADE DISC, QING

The jade disc carved with swirling lines, the stone with faint icy and russet inclusions. D:5.2cm

Estimate CA\$800 - CA\$1,200



014
清 白玉勒子
 JADE TUBULAR BEAD, QING

The tubular bead with dense scrolls, the stone with faint icy and russet inclusions. L:4.4cm

Estimate CA\$800 - CA\$1,200



015
清 荷花童子玉牌
 CARVED 'LOTUS' JADE PLAQUE, QING

Carved in low relief of a rectangular frame with the motif on top, inside the carving frame depicting a child holding tree branch of two peaches, a lotus carving on the other side in the rectangular frame. 3.2cm x 4.8cm x 0.8cm

Estimate CA\$3,000 - CA\$4,000



016
十八/十九世纪 青白玉划海棠纹填金水丞连勺
 PALE CELADON JADE INCISED WATERPOT, QING

The exterior delicately incised with a flowering begonia and rocks infilled with gilt lacquer, the smoothly polished stone of a pale celadon with areas of white mottling, together with a pale celadon jade spoon. H:3 cm spoon L:5 cm Provenance: Sotheby's New York 2015 sept. 15th - 16th, Lot 182

Estimate CA\$5,000 - CA\$7,000



017
清 白玉水盂带皮带座
 WHITE JADE WATER POT WITH STAND

The waterpot of irregular form carved in low-relief with a lotus leaf and vine, the stone of creamy white tone with orange and dark brown inclusions. accompanied with a fitted wooden stand. D:4.5cm

Estimate CA\$3,000 - CA\$4,000



018
清 白玉翎管
 WHITE JADE HAT FINIAL

Of a straight tubular form, partially hollowed out and surmounted by a small loop, the smooth polished stone of an even white tone. L:7.5cm

Estimate CA\$600 - CA\$1,000



019
青白玉鼻烟壶
 JADE SNUFF BOTTLE

The snuff bottle of an oval form, the stone of pale white tone with some dark greyish-brown inclusions, the body carved with a fruit design with leaves and vine, accompanied with a pinkish-purple cover. H:7cm

Estimate CA\$2,000 - CA\$3,000



020
白玉盖盒
 JADE COSMETIC BOX AND COVER

Of circular section on short foot, the exterior centered with an ancient Chinese character carving in relief, the stone of celadon tone with white inclusions. D:6.3cm, H:3.5cm

Estimate CA\$800 - CA\$1,200



021
清 玉雕人物挂坠
 JADE 'FIGURAL' PENDANT

Depicting a standing figure holding a flower bouquet dress in ancient Chinese clothing with a lively carved feature, glazed in copper red with white spots, accompanied with a fitted wood stand, a chip in the flower bouquet. H:6.6cm

Estimate CA\$300 - CA\$500



022
张星阶 (1909-1991) 岁朝图 设色纸本 挂轴
 ZHANG XINGJIE (1909-1991) MEILANZHUJU

Depicting plum blossoms, orchid, bamboo, chrysanthemum and scholar's rock, ink and color on paper, signed by the artist with three seals, hanging scroll. L:125.5cm, W:60.5cm

Estimate CA\$1,000 - CA\$1,500



023
金梦石 (1869-1952) 海鹤添寿图 设色纸本 挂轴
 JIN MENGSHI (1869- C.1952) CRANE

Depicting flying cranes above mountains and sea, ink and color on paper, titled and signed by the artist with two seals, hanging scroll. L:125.5cm, W:65.5cm

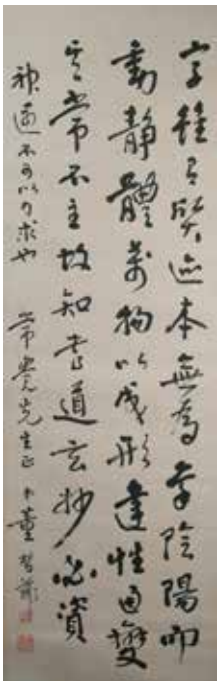
Estimate CA\$1,000 - CA\$1,500



024
李石君 (1867-1933) 猫蝶图 设色纸本 挂轴
 LI SHIJUN (1867-1933), CAT

Depicting cat, butterfly, peony and scholar's rock, ink and color on paper, signed by the artist with two seals. L:96cm, W:39.5cm

Estimate CA\$600 - CA\$1,000



025
董哲彊 (同治年間 -1936) 书法 水墨纸本 挂轴
DON ZHE XIANG (TONGZHI PERIOD -1936),
CALLIGRAPHY

Calligraphy, ink on paper, signed by the artist with two seals. L:132.5cm, W:41.5cm

Estimate CA\$600 - CA\$1,000



026
花鸟 扇面双挖 设色纸本 挂轴
CRABS AND BIRD, FANS

Comprising of two rounded fans, the first depicting a bird standing on a blossoming plum tree branches, signed by the artist with one seal, ink and color on paper; the second depicting four crabs, ink on paper, signed with two artist's seals, hanging scroll. D:29; D:30

Estimate CA\$600 - CA\$1,000



027
许乃钊 (1799—1878) 对联 水墨纸本 挂轴
XU NAIZHAO (1799-1878) CALLIGRAPHY COUPLET

Calligraphy, ink on paper, signed by the artist with two seals, a pair of hanging scrolls. L:127cm, W:27.7cm

Estimate CA\$2,000 - CA\$3,000



028
牡丹 扇面 设色纸本
 PONEY, FAN

Depicting a blossoming poney, ink, and color on paper, signed with two seals.

Estimate CA\$500 - CA\$800



029
四美图 扇面 设色纸本
 FOUR WOMEN, FAN

Depicting four women with poems, ink, and color on paper, sign with one artist's seal

Estimate CA\$500 - CA\$800



030
吕清翰 马 圆扇 水墨绢本
 LV QINGHAN, HORSE, FAN

Depicting three horses, ink on silk, signed by the artist with one seal. D: 24.5cm

Estimate CA\$500 - CA\$800



031
玛瑙鼻烟壶
 AGATE SNUFF BOTTLE

Of compressed ovoid body on short foot, the rose-colored banded stone with black streaked inclusions, accompanied with a stand. L:3.8cm, W:5cm, H:8.2cm

Estimate CA\$300 - CA\$500



032
玛瑙巧雕人物鼻烟壶
 AGATE SNUFF BOTTLE WITH FIGURES RELIEF

Of compressed globular body and straight neck, carved in high relief a scenery with two figures seated under the tree with cups in the hand, accompanied with a stopper. W:5.5cm, H:7.5cm

Estimate CA\$500 - CA\$800



033
囍字玉鼻烟壶
 JADE HAPPINESS SNUFF BOTTLE

Of compressed rectangular form with relief carving of "double happiness", the cream brownstone streaked with russet inclusion, accompanied with a stopper and a stand. L:4cm, W:1.7cm, H:7cm

Estimate CA\$300 - CA\$500



034
青白玉鼻烟壶
SQUARE SHAPED JADE SNUFF BOTTLE

Of rectangular form on straight foot, a relief carving of the frame on the exterior, the celadon stone with russet inclusions. L:2cm, W:3.3cm, H:7cm

Estimate CA\$300 - CA\$500



035
豇豆红鼻烟壶
PEACHBLOOM GLAZED SNUFF BOTTLE

Of an elongated tapered form rising to a flat rim, covered in peachbloom glazed. H:5.7cm

Estimate CA\$300 - CA\$500



036
白玉籽料刻诗文鼻烟壶
WHITE JADE SNUFF BOTTLE WITH INCISED CHARACTERS

Of gourd form, the stone incised with sixteen characters, the body of celadon tone with reddish-orange tone inclusions and dark brown mark. H:7.5cm

Estimate CA\$4,000 - CA\$6,000



037
白玉鼻烟壶 佛山
FOSHAN WHITE JADE SNUFF BOTTLE

Of irregular pear shape decorated with immortal figures and mountain scene and two characters "Foshan" carving in high relief, the stone of creamy white with russet inclusions, accompanied with a fitted wooden stand. H:8cm

Estimate CA\$1,000 - CA\$1,500



038
青白玉葫芦形鼻烟壶
CELADON JADE GOURD SHAPED SNUFF BOTTLE

Of flatten double gourd shape, the exterior decorated with gourd leaf carved in relief, the stone of celadon tone with white inclusions, accompanied with a stopper. L:6.3cm, W:3.5cm, H:1.4cm

Estimate CA\$300 - CA\$500



039
白玉素身鼻烟壶
WHITE JADE SNUFF BOTTLE WITH RUSSET INCLUSIONS

Of an ovular form, the natural stone of creamy white tone with russet inclusions, accompanied with a stopper. L:2.5cm, W:5cm, H:7.5cm

Estimate CA\$600 - CA\$1,000



040
清 水草玛瑙鼻烟壶
AGATE SNUFF BOTTLE

Of compressed rectangular form with beast mask carving on the shoulder, the bottle of semitransparent with copper red and green inclusions, accompanied with a stopper. L:2.8cm, W:7cm, H:8.5cm

Estimate CA\$500 - CA\$800



041
清 青花鼻烟壶
BLUE AND WHITE SNUFF BOTTLE

Of a pear shape body rising to a narrow neck with an everted mouth rim, exterior painted with two sets of flower blossom circled by four coiled leaves, painted with a leaf mark on the base. H: 7cm

Estimate CA\$300 - CA\$500



042
硬木佛像
ROSEWOOD BUDDHA FIGURE

Depicted seated in dhyanasana, hands held in dhyana mudra with a lotus, dressed in long flowing robes, the chest marked with the wan symbol, the eyes cast downwards with a meditative expression flanked by a pair of pendulous earlobes, the hair arranged in an ushnisha surmounted by an ovoid jewel, the back incised with four characters seal. L:16.5cm, W:19.5cm, H:21cm

Estimate CA\$400 - CA\$700



043
清道光 鐵鐘 銘文：大清道光十八年九月中旬謹獻
A CAST IRON TEMPLE BELL, QING

Of bell shape form with two holes on the top section and four holes on the second section welded to a wristed body and eight splayed legs, decorated body with relief floral decoration and inscription dated Daoguang eighteenth year, ninth month. D: 26.5cm, H:29.6cm

Estimate CA\$600 - CA\$1,000



044
藏法器
GLASS AND BRASS HOOK

The glass of the "J" shape similar to brush stroke from broad to narrow tip with brass hanger surmounted on atop, one large ring with four lion head holding four smaller rings. L: 14.5cm

Estimate CA\$300 - CA\$500



045
清 三足铜炉宣德款
BRONZE TRIPOD CENSER XUANDE MARK

Of compressed globular form body with an everted mouth, supported by three upside-down cone shape legs, two flank shoulders attached and two eight-lobes-ruyi curved on the body, the base incised with six-characters Xuande mark. D: 14.5cm, H: 8cm

Estimate CA\$1,000 - CA\$1,500



046
清 双兽耳铜炉
BRONZE DOUBLE EARS CENSER

Of compressed globular body to a circular band rising to a cylindrical neck and flat mouth trim, two molded beast masks on the opposite side, supported on three splayed legs from broad to narrow. D: 10.5cm, H:8.5cm

Estimate CA\$500 - CA\$1,000



047
17-18 世纪 竹、木雕把拂尘一对
PAIR OF TWO FLY WHISKS 17-18th

Two fly whisks, the first, a bamboo stalk with dark hairs attached on the end and drilled hole on the other end for hanging; the second, a curving wooden stick with a hanging string attached, a carved figure at the end and lighter color hairs mounted. L:26cm; L: 33cm

Estimate CA\$300 - CA\$500



048
清 东珠朝珠
PEARL COURT NECKLACE, QING

Comprising of a strand of 108 pearls, divided into four groups of 27 pearls by the three decorative beads, attached at the back a gourd-shaped fotouta suspending a flower shape pendant terminating with a tourmaline pear-shaped bead, and three other strands of plum color beads each further suspending a similar tourmaline tear-shaped drop. L:160cm

Estimate CA\$1,500 - CA\$2,000



049
清 玉蝉及黄花梨盒
JADE CICADA WITH AGARWOOD BOX, QING

Modeled in the form of a stylised cicada with protruding eyes on a smoothly polished stone of creamy white tone and russet inclusions; fitted into an Agarwood box, of cicada shaped with cicada features finely carved on the cover. L:6cm; L:13.3, W:8 cm, H:3cm

Estimate CA\$1,500 - CA\$2,000



050
晚清 黄花梨笔架山
HUANGHUA WOOD BRUSH REST, QING

The low curved brush rest of natural form and reddish-brown color, carved in high relief plum blossom and plum tree branches, accompanied with fitted wooden stand. L:15.7cm H:5.5cm

Estimate CA\$1,000 - CA\$1,500



051
清 太湖石形玉山子
JADE SCHOLAR'S STONE, QING

Of vertical orientation, expanding towards the top with numerous grooves, troughs, and round perforation, the stone of creamy white tone with russet inclusions, accompany with fitted stand. W: 7.5cm, H:13cm

Estimate CA\$300 - CA\$500



052
清 竹雕笔筒
CARVED BAMBOO BRUSH POT, QING

Of cylindrical form, the exterior gnarled with a plum tree, blossom plum flowers and small recessed holes carved in relief, the wood of rich patina color. D: 12cm, H:13.5cm

Estimate CA\$1,000 - CA\$1,500



053
清 硬木笔筒
HARDWOOD BRUSHPOT, QING DYNASTY

Of cylindrical body on a flat base drilled with a perforation(D:4.5), the warmly painted wood strikingly figured with natural attractive grain pattern of concentric rings and variegated brown streaks. D:12.3cm,H:13.3cm

Estimate CA\$1,000 - CA\$1,500



054
清 竹笔搁
 BAMBOO BRUSHREST, QING DYNASTY

Of an elongate form with a band in the mid-width though the whole length, carved in high relief in the convex side depicting old men playing Weiqi in Chinese ancient clothing on mountain scenery. L:27cm, W:7.3cm, H:2cm

Estimate CA\$300 - CA\$500



055
洒金铜炉 《宣德年制》款
 GILT-SPLASHED BRONZE CENSER

Of compressed globular body rising from three short tapering feet to a slightly everted rim, flanked by a pair of upright loop handles, the exterior patinated to a warm russet tone accentuated by gilt splashes, the base with a four-character Xuande mark. D:16.5cm, H:10.5cm

Estimate CA\$300 - CA\$500



056
晚清 景泰蓝烛台对
 PAIR OF CLOISSONNE CANDLESTICKS, LATE QING DYNASTY

A set of two candlesticks of overall long cylindrical form with a hexagonal tubular body tapering down slightly and splaying to a hexagonal foot, rising up to the top section with a wristed band and globular body the body to a broad circular drip pan and close in with a straight rim, cloisonné enamel with leafy branches issuing floral blooms on the exterior, perforation through the length. H:23.3cm

Estimate CA\$300 - CA\$500



057
清 铜鎏金大黑天擦擦
 GILT-BRONZE MAHAKALA TSHA TSHA, QING

Depicting Mahakala Tsha Tsha with wide opened mouths carved in relief, stepping on a flat laying figure and above the lotus base in a fire background, incised with calligraphy on the back of the plaque. L:6.6cm, W:4.9cm

Estimate CA\$500 - CA\$800



058
清 玛瑙 "心中有佛" 佩
 AGATE 'BUDDHA' PENDANT, QING

Of octagonal prism surmounted by a spiral pattern ball carving, a seated Buddha hidden inside the prism attached to the lotus base pull out, two small red beads decorated on the top and the end, the stone of pale tone with russet inclusions. L:7cm

Estimate CA\$200 - CA\$300



059
清 玛瑙 " 心中有佛 " 佩
AGATE 'BUDDHA' PENDANT, QING

Of octagonal prism surmounted by a seated Buddha carving, a second seated Buddha hidden inside the prism attached to the lotus base pull out, two small red beads decorated on the top and the end, creamy white tone with russet inclusions. L:6.6cm

Estimate CA\$200 - CA\$300



060
晚清民国 铜鹿镇纸
BRONZE DEER PAPERWEIGHT, LATE QING TO REPUBLICAN

Depicting a seated deer covered in blanket carrying scrolls at the back, incised with two character seal on the base. W:6cm, H:6.5cm

Estimate CA\$200 - CA\$300



061
晚清 铜胎画珐琅碗 《乾隆年制》款
BRONZE-GROUND ENAMEL BOWL, QING

Of a bell shape form, the interior enabes with a band of continuous leaf-vine scrolls close to the rim, the exterior enabled with blooming flowers interlaced vines against a marigold-yellow ground on top of a lappetband that surround the foot, the base with four-characters Qianlong seal mark and period. D:16.2cm, H:7cm

Estimate CA\$1,000 - CA\$1,500



062
紫檀梅花墨床
ZITAN WOOD INK STICK REST

A rectangular floating top pierced with plum and bamboo branches set over four rounded legs with finely carved plum blossom and bamboo leaves. L:8.5cm, W:12.8cm, H: 8.5cm

Estimate CA\$300 - CA\$500



063
黄花梨文具盒
 HUANGHUALI WOOD STATIONERY BOX

Of rectangular form showing eight tenons on the sides, fitted on a cover, the thick wood walls attractively figured the natural, tightly grained and shirling pattern of huanghuali wood. L:12.5, W:18.7, H:6.8cm

Estimate CA\$500 - CA\$800



064
老沉香十八子手持 带盒
 AGARWOOD BEADED BRACELET, WITH BOX

Comprising a total of 20 beads, divided into two groups of nine agarwood beads by two blue beads with strand attached, accompany with fitted box. D:10cm

Estimate CA\$1,000 - CA\$1,500



065
清 青花六角瓶
 BLUE AND WHITE PORCELAIN VASE, QING

A blue and white porcelain vase of hexagonal elongated form to a cylindrical neck, painted with four-lobes ruyi shape design on six sides of the body, supported with six bracket feet. H: 17cm

Estimate CA\$600 - CA\$1,000



066
清 黄杨木寿桃笔架
 HUANGYANG WOOD BRUSH REST, QING

Of an irregular curving stick shape, decorated with carvings with branches and peaches in high relief, the wood of reddish-russet tone. L:13cm, H:5cm

Estimate CA\$300 - CA\$500



067
黄花梨镂雕“福祿”纹小几
 HUANGHUALI WOOD PIERCED STAND

Of a rectangular top on four feet with open works of bats and peaches on two sides and the other two sides with carvings in relief of mystical beast, the wood of deep russet color. L:18.5cm, W:44.7cm, H:17.5cm

Estimate CA\$1,000 - CA\$1,500



068
清 白玉摆件
 PHOENIX RUYI CARVING, QING

Depicting a carved phoenix holding Ganoderma 'ruyi' in the mouth standing on Ganoderma stems and leaves carvings, celadon tone with russet inclusions, accompanied with a box. L:12cm

Estimate CA\$1,500 - CA\$2,000



069
二十世纪中 珍珠 K 金小树
 HARSTONE, PEARL & GOLD MINIATURE TREE, MID 20TH C.

Golden branches protruding from an octagonal form pot sprinkled with mixed hardstone chunks, two vertical branches decorated with jadeite leaves and a horizontally grown tree decorated with pearl and coin shape jadeite, the pot is the glue to a wooden stand and surmounted onto a rectangular base with a detachable glass cover, accompanied with a fitted box. H: 10cm (pot and branch)

Estimate CA\$1,500 - CA\$2,000



070
十九世纪 玛瑙骑龙雕水洗
 CARVED AGATE VESSEL, 19TH C.

Of upside down bell shape rising to an irregular flaring rim, decorated with a monster face and a ring on the exterior and a clambering Chilong handle on the opposite side extending its tail to the base forming the foot, accompanied with a fitted stand. W:12cm, H:6.5cm

Estimate CA\$800 - CA\$1,200



071
十九世纪 水晶雕瑞兽纹双耳盖瓶
 CARVED ROCK CRYSTAL VASE AND COVER, 19TH C.

Of hu-form crystal vase supported on straight foot with two flanked handles, decorated with a circular key-fret band on the neck, surmounted with an animal sculpture cover, accompanied with a fitted crystal stand, cracks on the vase. W:8.5cm, H:15.5cm

Estimate CA\$800 - CA\$1,200



072
17-18 世纪 雕瓷龙纹双耳对瓶带底座
 17-18TH PAIR OF YELLOW AND BLUE GLAZE VASE

Of baluster form surmounted by a straight neck with a Chiong handle attached, the body carved in high-relief of two dragons on the turquoise-glazed ground, a spot on the mouth rim repaired, attached with stand. D:10 cm, H:25cm

Estimate CA\$600 - CA\$1,000



073
粉珠手串
PINK HARDSTONE BEADS BRACELET

A bracelet of 13 smoothly polished stone in creamy soft pink with white inclusions. L:24cm

Estimate CA\$300 - CA\$500



074
念珠
BEADED ROSARY

A strand of 54 prayers beads in russet color with irregular white inclusions and a gourd-shaped fotouta attached at the back. L:68cm

Estimate CA\$300 - CA\$500



075
18K 白金私人订制嵌钻石戒指
DIAMOND AND PLATINUM RING

Custom designed band ring with three round diamonds in 18k gold. D:16.5mm wt:2.59g with box and certificate

Estimate CA\$2,000 - CA\$3,000



076
10K 金嵌钻石及绿宝石古董戒指
EMERALD AND GOLD RING

Of an almond shape design with emerald and diamonds inlaid in 10k gold. D:17.5mm wt:7.9g with box and certificate

Estimate CA\$1,500 - CA\$2,300



077
18K 黄金嵌黄水晶项链
CITRINE AND GOLD NECKLACE

Citrine emerald on an interlaced knot design in 18K gold. wt:17.22g with box and certificate

Estimate CA\$1,500 - CA\$2,200



078
10K 金手工制古董嵌钻石戒指
DIAMOND AND GOLD RING

Depicting a flower bouquet, the ring is accented with a diamond in the center with small diamonds and surrounding it, in 10K gold. D:17mm wt:20.25g with box and certificate

Estimate CA\$2,000 - CA\$3,800



079
青金石人物雕两个
 GROUP OF TWO LAZURITE FIGURE CARVINGS

Depicting two seated figures dressed in free-flowing clothing with vividly carved facial features. H:6cm

Estimate CA\$300 - CA\$500



080
清晚期 铜壶
 BRONZE POT, LATE QING DYNASTY

The pot of globular body, with a long curved mouth, set with two hinged semi-circular handles folding to each side of the round shoulder, the body incised with figures and landscape, the pot accompanied with a fitted cover carved with lotus petals and with a pointed knob.

Estimate CA\$200 - CA\$300



081
寿山石章
 SHOUSHAN STONE SEAL

The top of the seal carved in high-relief of a phoenix standing on a scholar's rock against blossoming poney below carved with the artist's name and year, the seal face carved with four characters. L:5.2cm,W:5.2cm, H:15.2cm

Estimate CA\$100 - CA\$200



082
金 汉白玉阿难和尚
 STONE LOHAN, JIN DYNASTY

The Lohan with the face carved vividly, his eyes looking downwards, hands in praying to position in front of his chest, wearing a long robe and standing on a tall stand, the robe painted with red and green paint.L:9cm, W:9.7cm, H:28.5cm

Estimate CA\$1,500 - CA\$2,000



083
十八世纪 喇嘛唐卡
 LAMA THANGKA, 18TH CENTURY

Depicting three Buddhas, two cross-legged Buddhas above the cloud on the right corner, one Buddha sitting on a floating chair with a tribute in front, on mountain scenery background. W: 32cm, L: 55.5cm

Estimate CA\$2,000 - CA\$4,000



084
清 珊瑚辑米珠包东珠朝珠
CORAL AND PEARL COURT NECKLACE, QING

Comprising of a strand of 108 coral-pearl beads, divided into four groups of 27 coral-pearl beads by the three blue coral-stone beads, attached at the back a gourd-shaped fotouta suspending a pendant and terminating with a tear-shaped coral-stone, and three other strands each further suspending a similar tourmaline tear-shaped drop; accompanied with fitted box. L:160cm

Estimate CA\$5,000 - CA\$8,000



085
清 珊瑚辑米珠包沉香十八子串
CORAL & AGARWOOD BEADED BRACELET, QING

Comprising 18 coral and Agarwood beads, with gourd-shaped fotouta attached at back suspending a pendant and terminating with a tear-shaped coral-stone. D:11.3cm

Estimate CA\$2,000 - CA\$3,000



086
清 白玉太湖石形山子
JADE SCHOLAR'S STONE, QING

Standing on a foot relatively narrower than the top, expanding towards the top with numerous grooves, troughs, and round perforation, the stone of celadon tone with russet inclusions, accompany with fitted stand. W: 5cm, H:11cm

Estimate CA\$300 - CA\$500



087
17-18 世纪 铜香炉
17-18TH BRONZE INCENSE BURNER

Of cylindrical form supported on three short legs, scrolling designs and patterns band carved on the body, accompanied with a wooden lid with three ganoderma carving pierced through and a fitted wood tripod stand. D:9.7cm, H(bronze):9cm

Estimate CA\$800 - CA\$1,200



088
晚清 福寿纹铜炉 《宣德》款
 BRONZE CENSER, LATE QING TO REPUBLICAN

Of a compressed globular body rising to a small everted rim, flanked with two ears on the opposite side, decorated with ten flying bats on the exterior, the base incised with six-characters Xuande seal mark and period. L:6.5, H:3.3cm

Estimate CA\$100 - CA\$200



089
黄蜜蜡貔貅
 YELLOW AMBER PIXIU CARVING

A piyou on four limbs carved in high-relief with a coin under the forward limbs, lively carved features on the yellow honey color stone, cracks on the underbelly. L:5cm

Estimate CA\$200 - CA\$300



090
清 玉印章
 SQUARE JADE SEAL, QING

A semicircular handle on a cube base, in celadon tone with russet inclusion. L:2.6cm, W:2.6cm, H:2cm

Estimate CA\$300 - CA\$500



091
晚清 乌铜走银盒 《云南岳应》款
 BLACK COPPER SILVER BOX

Of a squared form, the top panel incised a scenery of mountains and houses and a person rowing on the river, a repeated pattern on the exterior sides, exposed interior, the base incised with four-characters Yueying Mark. L:9.7cm, W:9.7cm, H:2.5cm

Estimate CA\$600 - CA\$1,000



092
玉璧、玉斧一组
 GROUP OF A JADE BI AND AN AXE

Jade Bi, of octagonal shape with a cut out through the center (2.5cm diameter), green tone with russet inclusions; the axe, of five straight sides and a curved side with a drilled hole (3.5cm diameter), earthy tone streaked with badge, orange and celadon inclusions, engravings on the surface of the axe. W:13.5cm; W: 19.5cm

Estimate CA\$500 - CA\$700



093
鍍金木佛像
GILT-LACQUERED BUDDHA FIGURE

Seated Buddha with detachable right hand curling the second and third finger, left hand holding beads, dressed in a long robe tied under the chest and covering the shoulders, the face a meditative expression, eyes downcast, smile slightly outlined, ears with long lobes falling, all supported on a matched pedestal base densely decorated with overlapping layers of lotus petals. W:17cm, H:39cm

Estimate CA\$600 - CA\$1,000



094
民国 雕刻料器花瓶
YELLOW PEKING GLASS GU VASE

A yellow peking-glass vase of cylindrical form rising from a splayed base to a flared rim with a compressed globular in the mid section, decorated with plum flower and branch carved in high relief around the exterior. D:12cm, H:21.5cm

Estimate CA\$500 - CA\$800



095
八卦纹玉璧
'BAGUA' JADE PLAQUE

A circular pendant of eight-lobes with a mobile centerpiece circulated by key-fret bands, incised with eight Bagua motifs and twelve-characters of time on the exterior surfaces, four tiny pierced 'ruyi' shaped holes around the perimeter, celadon tone with russet inclusion with some chips and cracks. D:5.8cm

Estimate CA\$500 - CA\$800

哈利 杰弗里 比斯利 Harry Geoffrey Beasley (1881-1939) 拍品 96-130 号

此次拍卖涵盖哈利 杰弗里 比斯利 Harry Geoffrey Beasley (1881-1939) 的数件收藏品。比斯利是位著名的英国人物学家，他在生前创立了 Cranmore Ethnographical Museum (克兰莫尔民族志博物馆)，并收录了多达 6000 多件藏品。比斯利于 1939 年去世，其创立的克兰莫尔博物馆在二战期间被炸毁，所幸在战争期间比斯利的藏品多数存放于大英博物馆中得以幸免。战争结束后，其藏品大部分被转递至大英博物馆、爱丁堡皇家博物馆、剑桥大学考古与人类学博物馆、牛津皮特河博物馆及利物浦博物馆中，并保留了一部分藏品留给他的遗孀。拍品 96 号到 130 号是由比斯利的遗孀于 1974 年去世后，他的一位艺术史学家朋友从其手中购得这批藏品

Estate of the late Harry Geoffrey Beasley (1881-1939).

Beasley was a British anthropologist and museum curator who set up the Cranmore Ethnographical Museum, which eventually held more than 6000 objects. Beasley died in 1939 and a large portion of his collection was stored within the British Museum collection during the war, which was fortunate, as the Cranmore Museum was destroyed by a bomb during WW2. After the war, substantial portions of the Beasley Collection were passed to the British Museum, the Royal Museum in Edinburgh, Cambridge University Museum of Archaeology & Anthropology, the Pitt River Museum in Oxford and the Liverpool Museums. Several hundred examples were also kept by Beasley and passed onto his widow. This portion of the collection was acquired by my grandfather whom was a close fellow Archaic art historian from Beasley's Widow who passed away in 1974. Additional examples in the collection were acquired from the David Percival, Lord Elgin, Marchant, and Sothebys Parke Bernet collections during the 1950-1975 era.



096
玉龙凤一对
TWO JADE 'DRAGON' PENDANTS

A set of two flat pieces elegantly and delicately carved, of a dragon with the scrolling tail; and a phoenix of a long pointy tail with rope-life effect. They were made from a faintly translucent yellow and brown jade, accompanied with a cushioned box. Dragon: W:10.2cm; Bird: W:8.2cm Sotheby's Parke Bernet, c1970.

Provenance: Estate of the late Harry Geoffrey Beasley (1881-1939) a British anthropologist and curator of Cranmore Ethnographical Museum.

Estimate CA\$1,500 - CA\$2,000



097
玉手镯
 JADE BANGLE BRACELET

Jade bangle bracelet circled by three wavy bands design carving, this ivory white jade stone with brown markings and a smooth but dull finish, accompanied with a cushioned box. D:10cm, H:2.2cm

Provenance: Estate of the late Harry Geoffrey Beasley (1881-1939) a British anthropologist and curator of Cranmore Ethnographical Museum.

Estimate CA\$500 - CA\$800

098
神兽纹玉管
 LARGE JADE MYTHICAL BEAST BEAD

A carving of elongated ovoid form with a hole drilled through the length, the exterior decorated with a mythical beast in relief and scrolling lines incised, accompanied with a fitted silk box. L: 6cm, H:2 cm

Provenance: Estate of the late Harry Geoffrey Beasley (1881-1939) a British anthropologist and curator of Cranmore Ethnographical Museum.

Estimate CA\$300 - CA\$500



099
玉猪
 STONE ARCHAIC PIG FIGURE

A carving of a pig in elongated form with an accented nose, laying on four limbs, the stone of celadon tone with white and russet inclusions, accompanied with a cushioned box. L:6.7cm, H:1.4cm

Provenance: Estate of the late Harry Geoffrey Beasley (1881-1939) a British anthropologist and curator of Cranmore Ethnographical Museum.

Estimate CA\$300 - CA\$500

100
水晶圆环三个
 THREE CARVED ROCK CRYSTAL BI DISC RINGS

A set of three carved circular rings of clear crystal with transparency and white inclusions. D:6.5, H:0.6cm

Provenance: Estate of the late Harry Geoffrey Beasley (1881-1939) a British anthropologist and curator of Cranmore Ethnographical Museum.

Estimate CA\$300 - CA\$500

101
10-15 世纪 玉璧
 EARLY JADE "HOUSE GOD" BI DISC

Of a circular section with the flower motif carved on the two sides, the perforation was done bilaterally, the edge is not uniformly smooth, rough surfaces with russet tones. D:12.4cm, H:1.5cm

Provenance: Estate of the late Harry Geoffrey Beasley (1881-1939) a British anthropologist and curator of Cranmore Ethnographical Museum.

Estimate CA\$600 - CA\$1,000



102
春秋战国 龙形玉片
 ARCHAIC JADE DRAGON PENDANT

Made of calcified jade, the surface of the pendant has almost no polish. Its incised details and spirals are displayed on both sides. Stylized dragon info best carving style form, w. Zhou to Spring Autumn (1100 BC- 700 BC). Cremated + absorption from earth, accompanied with a box. L:1.7cm, W:6.3cm, H:0.7cm

Provenance: Estate of the late Harry Geoffrey Beasley (1881-1939) a British anthropologist and curator of Cranmore Ethnographical Museum.

Estimate CA\$600 - CA\$1,000



103
玉珠
 LARGE JADE BEAD PENDANT

Of a sphere carving with numerous grooves and perforation oriented to the center, the stone of white tone with russet inclusions. D:2.8, H:2.3cm

Provenance: Estate of the late Harry Geoffrey Beasley (1881-1939) a British anthropologist and curator of Cranmore Ethnographical Museum.

Estimate CA\$200 - CA\$400



104
蝙蝠纹玉佩
 JADE BAT BI DISC

A carving of pierced mandala design with four repeated bats surrounding the coin in the center, the stone of celadon tone attached with rusted metal band close to the center, accompanied with a cushioned box. D:5 cm, H:0.45cm

Provenance: Estate of the late Harry Geoffrey Beasley (1881-1939) a British anthropologist and curator of Cranmore Ethnographical Museum.

Estimate CA\$200 - CA\$400



105
玉片三块
 THREE EARLY CHINESE ARCHAIC PENDANT

The set comprising of three plaques of black stone with a circular cut out and two pierced holes; green jadeite incised with a motif on one side; a dark semi-circular bend with three holes pierced though, accompanied with cushioned box. Black: W:6.2cm, H:0.4cm; Green: W:6.2, H:0.3cm; Dark: W:5.6cm, H:0.4cm

Provenance: Estate of the late Harry Geoffrey Beasley (1881-1939) a British anthropologist and curator of Cranmore Ethnographical Museum.

Estimate CA\$500 - CA\$800



106
玉石串链一组
 LARGE COLLECTION JADE CONG FORM BEADS

The set comprised of three strands of mix stone beads, accompanied with a cushioned box. Strand 1: L:60cm; Strand 2: L:50cm; Strand 3: L:34 cm

Provenance: Estate of the late Harry Geoffrey Beasley (1881-1939) a British anthropologist and curator of Cranmore Ethnographical Museum.

Estimate CA\$500 - CA\$800



107
玉璧组合
 LARGE THREE-PIECE SECTIONED BI DISC

Of a fan shape sectioned pierced thought with two holes at the edge, the edge is not uniformly smooth, the stone of celadon tone with white and russet inclusions. W:17.5cm, H:0.4cm

Provenance: Estate of the late Harry Geoffrey Beasley (1881-1939) a British anthropologist and curator of Cranmore Ethnographical Museum.

Estimate CA\$1,000 - CA\$1,500



108
春秋战国时期 谷纹玉璧
 VERY FINE WHITE JADE BI DISC

Of circle sectioned with a cutout in the center, carved on both sides with fine plastic spirals, well-spaced and fully formed. The design is traditionally known in Chinese as "gu" grain pattern, the stone of pale celadon tone with white and russet inclusions, accompanied with a box. D:13.6cm, H:0.4cm

Provenance: Estate of the late Harry Geoffrey Beasley (1881-1939) a British anthropologist and curator of Cranmore Ethnographical Museum.

Estimate CA\$2,000 - CA\$4,000



109
玉剑鞘
JADE SCABBARD SLIDE

Carved scabbard slide of rectangular form with two rounded edges, incised with repeated carvings of symmetrical arrangements on the top surface, the stone of dark celadon with white and russet inclusions, accompanied with a cushioned box. L:2.3cm, W:5.2cm, H:1.3cm

Provenance: Estate of the late Harry Geoffrey Beasley (1881-1939) British anthropologist and curator of Cranmore Ethnographical Museum.

Estimate CA\$300 - CA\$500



110
玉翁仲
JADE FIGURAL PENDANT SONG 960-1279

Made from a mottled green stone, this figure has one perforation drilled through the center from top to base, this capped, robed and the bearded figure is carved in imitation of the Han dynasty abstract style, the figure body is triangular in section, accompanied with a cushioned box. D:1.3cm, H:4.9cm

Provenance: Estate of the late Harry Geoffrey Beasley (1881-1939) a British anthropologist and curator of Cranmore Ethnographical Museum.

Estimate CA\$200 - CA\$400



111
谷纹玉剑鞘
CHICKEN-BONE WHITE JADE SCABBARD SLIDE

Carved scabbard slide of rectangular form with a bending top, incised with repeated spirals pattern on the bumpy surface top, the stone of creamy white tone with russet inclusions. L:2cm, W:9.5cm, H:1.2cm

Provenance: Estate of the late Harry Geoffrey Beasley (1881-1939) a British anthropologist and curator of Cranmore Ethnographical Museum.

Estimate CA\$300 - CA\$500



112
玉鸟
EARLY CHINESE ARCHAIC JADE BIRD PENDANT

A carving of a bird, elongated form with wings close to the body, accompanied with a box, with a crack. W:9.2cm, H:1.9cm

Provenance: Estate of the late Harry Geoffrey Beasley (1881-1939) a British anthropologist and curator of Cranmore Ethnographical Museum.

Estimate CA\$1,500 - CA\$2,000



113
玉斧
JADE ARCHAIC 'DAO' BLADE

Of a nearly rectangular ceremonial shape ax with two drilled holes, green stone with russet inclusions, accompanied with a cushioned box. W:16.8, H:0.8cm

Provenance: Estate of the late Harry Geoffrey Beasley (1881-1939) a British anthropologist and curator of Cranmore Ethnographical Museum.

Estimate CA\$300 - CA\$500



114
铜观音像 (有损)
 EARLY BRONZE GUANYIN

Depicting a Guanyin carving surmounted on a stand, accompanied with a cushioned box. W:3cm, H:9.9cm

Provenance: Estate of the late Harry Geoffrey Beasley (1881-1939) a British anthropologist and curator of Cranmore Ethnographical Museum.

Estimate CA\$200 - CA\$300



115
龙纹玉饰
 FINE EARLY CHINESE JADE PENDANT

A pendant made on tan-brown-red jade, both edges are several carved lateral "flanges", details are carved in outlines on both sides, with accompanied by a cushioned box. W:8.3cm, H:0.4cm

Provenance: Estate of the late Harry Geoffrey Beasley (1881-1939) a British anthropologist and curator of Cranmore Ethnographical Museum.

Estimate CA\$1,500 - CA\$2,500



116
玉璧一组
 THREE-PIECE CHINESE JADE BI DISC SET

The discs are of mottled brown and green, but all surfaces are smoothly polished and plain. The perforation is larger than usual, and one disc edge is not uniformly smooth, D:12.75cm, H:0.6cm; D:13cm, H:0.8cm; D:12.9cm, H:0.5cm

Purchased Sotheby's Parke Bernet, c1970 (labeled) Further provenance: Estate of the late Harry Geoffrey Beasley (1881-1939) a British anthropologist and curator of Cranmore Ethnographical Museum.

Estimate CA\$1,500 - CA\$2,500



117
勾连纹玉管
 LARGE JADE TUBULAR BEAD PENDANT

This cylindrical bead is a brown, amber and cream jade, the bead is incised with an all over design of curl-ended C-forms interlocking pattern, a drilled hole through the length. D:1.3cm, H:10.4cm

Provenance: Estate of the late Harry Geoffrey Beasley (1881-1939) a British anthropologist and curator of Cranmore Ethnographical Museum.

Estimate CA\$300 - CA\$500



118
玉雁
FINE CHINESE JADE GOOSE PENDANT

The goose is made from a mottled brownstone, the decoration is carved in very low relief with incised lines, accompanied by a cushioned box. W:5.5cm, H:0.5cm

Provenance: Estate of the late Harry Geoffrey Beasley (1881-1939) a British anthropologist and curator of Cranmore Ethnographical Museum.

Estimate CA\$300 - CA\$500



119
玉猪一对
TWO EARLY CHINESE JADE PIG FIGURES

Made from a light brown possibly calcified stone, a pair of pig carvings in elongated form with an accented nose, laying on four limbs, W:10.8cm, H:1.5cm; W:11.4cm, H:1.5cm

Provenance: Estate of the late Harry Geoffrey Beasley (1881-1939) a British anthropologist and curator of Cranmore Ethnographical Museum.

Estimate CA\$300 - CA\$500

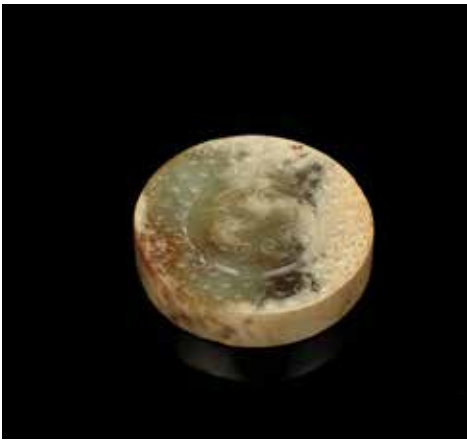


120
白玉雕仿古螭龙纹玉璧
JADE DRAGON BI DISC

Of disc form carved with a four-legged creature crawling with a bifurcated tail in higher rounded relief, the reverse side shows an archaic design of interlocking spiral-ended "C" around hatched lozenges in a four-part scheme, the celadon stone with russet inclusions, accompanied with a cushioned box. D:3.6cm, H:0.9cm

Provenance: Estate of the late Harry Geoffrey Beasley (1881-1939) a British anthropologist and curator of Cranmore Ethnographical Museum.

Estimate CA\$500 - CA\$800

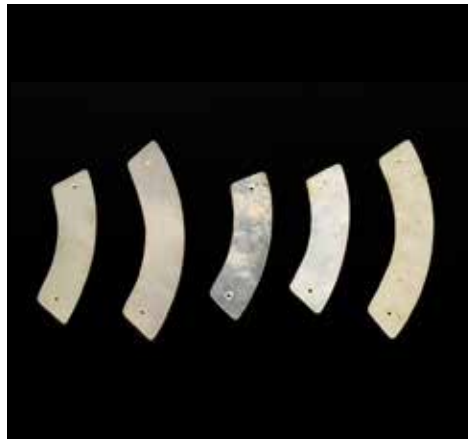


121
早期 玉劍頌 (首)
EARLY CHINESE JADE SWORD POMMEL

Of a circle sectioned, decorated with scrolling patterns and circular bands encircling a lozenges incision in the center, and three oval shape perforation encircled by circle bands carved on the other side, the stone of green and white tones with russet inclusions, accompanied with a box. D:4.6cm, H:1 cm

Provenance: Estate of the late Harry Geoffrey Beasley (1881-1939) a British anthropologist and curator of Cranmore Ethnographical Museum.

Estimate CA\$500 - CA\$800



122
白玉璜一组五个
FIVE THINLY CARVED WHITE JADE HUANG PENDANTS

Of a horizontally elongated fan shape with a drilled hole at each end, the plain stone of semitransparent white tone with white or russet inclusions, accompanied with a cushioned box. Short(x3): W: 5.6cm; Long(x2): 7.5cm

Provenance: Estate of the late Harry Geoffrey Beasley (1881-1939) a British anthropologist and curator of Cranmore Ethnographical Museum.

Estimate CA\$300 - CA\$500



123
玉斧
EARLY JADE AXE TOOL

The body appears mottled brown and green, plain on all surfaces, of roughly rectangular form, relatively flat on one side and slightly convex on the other side and sloped to a "cutting" edge with a small perforation, an accompanied with a cushioned box. W:13.2cm, H:2.5cm

Provenance: Estate of the late Harry Geoffrey Beasley (1881-1939) a British anthropologist and curator of Cranmore Ethnographical Museum.

Estimate CA\$2,000 - CA\$3,000



124
玉劍
 EARLY JADE SWORD FITTING SHAPE

The jade appears in dark green with markings of brown and other shades of green, of an almond shape sectioned rising up slightly tapered with three shallow perforations on the top, plain base, incised with detailed scroll key-fret designs on the sides, accompanied with a box. L:1.8cm, W:5cm, H:2.4cm

Provenance: Estate of the late Harry Geoffrey Beasley (1881-1939) a British anthropologist and curator of Cranmore Ethnographical Museum.

Estimate CA\$800 - CA\$1,200



125
明代 老提油玉手鐲
 FINE BLACK JADE BANGLE BRACELET, MING

The bracelet in a continuous circle with rounded edges and polished surface repeated with curl-ended C-forms design, the stone of black and celadon tone with russet inclusions. D:8.6cm, H:2 cm

Provenance: Estate of the late Harry Geoffrey Beasley (1881-1939) a British anthropologist and curator of Cranmore Ethnographical Museum.

Estimate CA\$1,000 - CA\$2,000



126
玉手鐲
 EARLY JADE BANGLE BRACELET

Of a continuous circle bracelet, the light green jade is mottled with amber and brown carved with volutes in a uniform pattern on the exterior. D:7.8cm, H:2 cm

Provenance: Estate of the late Harry Geoffrey Beasley (1881-1939) a British anthropologist and curator of Cranmore Ethnographical Museum.

Estimate CA\$800 - CA\$1,200



127
面具纹玉饰
 EARLY JADE MASK PENDANT

The raw material has features of pale-grey-green translucency with white clouding and traces of earth and red pigment remain, the pendant is in the shape of a mask incised with beasts decoration only on one side with biconical perforation on the top for stringing, accompanied with a cushioned box. W:7.1cm, H:0.4cm

Provenance: Estate of the late Harry Geoffrey Beasley (1881-1939) a British anthropologist and curator of Cranmore Ethnographical Museum.

Estimate CA\$800 - CA\$1,200



128
玉鸟
JADE BIRD PENDANT

The raw material features a dark green tone mottled with amber and brown markings, the jade bird-fitting is roughly rectangular and carved as though seen from above, polished surface with two perforated eyes, accompanied with a cushioned box. W:4.7cm, H:1.1cm

Provenance: Estate of the late Harry Geoffrey Beasley (1881-1939) British anthropologist and curator of Cranmore Ethnographical Museum.

Estimate CA\$1,000 - CA\$1,500



129
面具纹龙山串珠
JADE MASK CARVED TUBULAR LONGSHAN BEAD

Of a cylindrical form tapering to the top and perforation through the length, decorated with a monster mask carving incised on the body, accompanied with a box. D:1.8cm, H:3 cm

Provenance: Estate of the late Harry Geoffrey Beasley (1881-1939) a British anthropologist and curator of Cranmore Ethnographical Museum.

Estimate CA\$1,000 - CA\$1,500



130
玉挂坠
JADE PENDANT

Designed with S and C form spiral patterns on the four sides of the rectangular prism, attached with a strand through the center lengthwise perforation from the top to the base, the stone of celadon tone cloud with russet inclusions, accompanied with a cushioned box. L:1cm, W:1.7cm, H:5.8cm

Provenance: Estate of the late Harry Geoffrey Beasley (1881-1939) a British anthropologist and curator of Cranmore Ethnographical Museum.

Estimate CA\$500 - CA\$800



131
18 世纪 皇子成龙玉带钩
WHITE JADE BELT HOOK, 18TH C.

Carved with a dragon head terminal facing the shaft with high relief leafy sprig carving, the underside with a floral circular knob and incised motif, the stone of white tone, the back is flat with a round stud, accompanied with a fitted wood stand. L:8.5cm, W:1.4cm, H:2 cm

Provenance: Certified item of Marchanson Limited: Chinese and Japanese Work of Art with original Marchant London purchase receipt, 16th August 1974.

Estimate CA\$3,000 - CA\$5,000



132
18 世纪 童子戏金蟾玉牌连座
JADE PIERCED PLAQUE WITH STAND, QING DYNASTY

Carved with openwork depicting a gourd and a figure holding instrument and coin, the stone of pale grey tone, all supported on a fitted wooden stand. L:7cm, W:9cm, H:0.5cm 26th June 1973.

Provenance: Certified item of S. Marchant and Son: Chinese and Japanese Works of Art with original Marchant London purchase receipt.

Estimate CA\$1,200 - CA\$1,800



133
18 世纪 双欢白玉摆件连座
 JADE DOUBLE BADGERS PENDANT, QING DYNASTY

A carving of a pierced flower design encircled by two badgers, the stone of creamy white tone, accompanied with a fitted wood stand. W:4 cm, H:2 cm

Provenance: Item from S. Marchant and Son: Chinese and Japanese Works of Art with Marchant London purchase receipt, 20th March 1970.

Estimate CA\$1,200 - CA\$1,800



134
18 世纪 麒麟灵芝雕白玉摆件
 JADE QILIN JADE WITH RUYI LOTUS PENDANT, QING

A carving of a dragon holding a strand of Linzi branch pierced, the stone of pale grey tone with russet inclusions. W:4 cm, H:1.8cm

Provenance: Certified item from Y.F. Yang & Co., Chinese Snuff Bottles & Works of Art with purchase receipt, 25th March 1991.

Estimate CA\$1,000 - CA\$1,500



135
18 世纪 马上封猴白玉摆件
 JADE HORSE WITH MONKEY PENDANT, QING DYNASTY

A carving of a monkey on a horse's back, the stone of celadon tone with white and russet inclusions. A traditional gift to express wishes for promotion. W:4.8, H:1.6cm

Provenance: Item from C. Barrett & Co. Est. 1818, jewellery & Silverware- Antiques & Curios with purchase receipt 1968.

Estimate CA\$500 - CA\$800



136
18 世纪 含苞待放白玉摆件
 HARDWOOD BRUSHPOT, QING DYNASTY

A carving of a lotus bud, the stone of pale celadon tone with russet inclusions. W:6.7cm, H:1.3cm

Provenance: with signed purchase invoice from 9th November 1974.

Estimate CA\$500 - CA\$800



137
18 世纪 青白玉麒麟摆件连座
SPOTTED JADE FU LION, QING DYNASTY

A carving a Kirin turning the head to the back with four limbs tuck underneath, the pale greenish-white stone with dark and russet inclusions, accompanied with a fitted wood stand. W:4.9, H:1.6cm

Provenance: Certified item of Richard Marchant Limited: chinese and Japanese Works of Art with Marchant London purchase receipt, 6th October 1981.

Estimate CA\$600 - CA\$1,000



138
玉斧
EARLY MINIATURE JADE AXE TOOL

Of a jade axe carving with two perforations, a larger perforation close to the middle and the second perforation close to the edge with a string attached, the stone of celadon tone with white and russet inclusions, accompanied with a box. L:7.5, H:0.6cm

Estimate CA\$500 - CA\$1,000



139
十六 / 十七世纪 龙泉青瓷三足水仙花盆
LONGQUAN CELADON TRIPOD NARCISSUS BOWL, 16TH/17TH C.

Of short squat form and raised on three rounded legs, a recessed border above the bulging waist. D:31.5cm

Estimate CA\$2,000 - CA\$3,000



140
明以前 龙泉刻花大盆
LONGQUAN BOWL MING

Of ovoid body with double everted rim, the interior carved with wave patterned and a chevron patterned band close to the inner rim, all covered in celadon glaze. D:41.3, H:8.5cm

Estimate CA\$5,000 - CA\$6,000



141
粉彩百子赏瓶 《大清乾隆年制》款
 FAMILLE-ROSE 'HUNDRED BOYS' VASE

The vase of pear shape rising from a tapered foot to a waisted neck and an everted mouth, the body decorated with boys within a garden scene, the neck and the foot decorated with interlaced floral patterns against a light green ground, the with six-character Qianlong seal. H:34cm

Estimate CA\$3,000 - CA\$5,000



142
晚清 粉彩开光风景图天球瓶 《大清乾隆年制》款
 FAMILLE-ROSE 'LANDSCAPE' VASE

Of a compressed globular body to a straight neck painted with peach and flowers and two eight-lobed ruyi frame with mountain-waterfall scenery painting in it, a ruyi band at the rim and lappet band at the foot, the base with a six-character mark in Qianlong seal and period. H: 32.5cm

Estimate CA\$500 - CA\$800



143
粉彩龙凤纹盘 《大清光绪年制》款
 FAMILLE-ROSE 'DRAGON AND PHOENIX' CHARGER

The charger of a deep rounded body with an everted mouth, the exterior decorated with phoenix and dragon playing with a flaming ball amidst clouds above the sea, the base with six-character Guangxu seal. D:20cm, H:4.5cm

Estimate CA\$500 - CA\$600



144
晚清 青花冰梅纹盖罐
 BLUE AND WHITE 'PRUNUS' JAR WITH COVER

The globular body painted in reserve with prunus limbs branching at angles and extending slender shoots of new growth bearing clusters of buds and blossoms all against a bright cobalt-blue ground, the domed cover similarly decorated. D:10cm, H:11.5cm

Estimate CA\$100 - CA\$200



145
晚清 博古纹冬瓜罐 带盖
 FAMILLE-ROSE 'HUNDRED ANTIQUES' JAR WITH COVER

Of ovoid tapered form, the vase decorated with poney and painted vases on the body, and calligraphy on the reverse side, base with a decorative band, the lid with a pointed cover and painted with a similar pattern. D:19cm, H:32cm

Estimate CA\$500 - CA\$1,000



146
青花古典人物赏瓶 《康熙年制》款
 BLUE AND WHITE 'FIGURAL' VASE KANGXI MARK

The vase of long tapered form, rising to a waisted short neck and an everted mouth, the body painted in blue and white with figures within a landscape scene, the foot and the mouth mounted with metal, the base with four-character Kangxi mark. H:30cm

Estimate CA\$300 - CA\$500



147
白釉如意双耳赏瓶
 WHITE WARE VASE RUYI HANDLE

Of archaic hu form flanked with two handles on the neck, decorated with a horizontal lotus-petal-band on the body, covered overall with white glazed. D(top):11.2cm, H:30cm

Estimate CA\$1,500 - CA\$2,000



148
建窑小盏
 JIAN TYPE BOWL

The bowl of conical form supported on a straight footing with brown to black flambé glazed finish on the interior, the brown to black flambé glazed end in a midsection of the exterior to an unglazed base. D:12.7cm, H:6.8cm

Estimate CA\$200 - CA\$400



149
青花龙纹小碗 《仿古珍藏》款
 BLUE AND WHITE 'DRAGON' BOWL

A blue and white dragon bowl, the exterior decorated with a circular framed lotus and tree painting and a motif band close to the rim, a dragon painted with mountain and cloud and flowers on the exterior, the base with four-character Fangyu Zhencang seal. D:12.8cm, H:6.2cm

Estimate CA\$200 - CA\$400



150
青花龙纹大盘 《大清雍正年制》款
 BLUE AND WHITE 'DRAGON' CHARGER
 YONGZHENG MARK

Of short inverted bell shape plate supported on straight foot, painted in blue on white a lively dragon with vivid features and claws surrounded by floating clouds with the dragon body extended from the interior to exterior, the base with six-characters Yongzheng seal. D:18.5cm, H:5cm

Estimate CA\$500 - CA\$1,000



151

黄釉暗刻龙纹蒜头瓶 《大明成化年制》款
YELLOW GLAZE DRAGON VASE CHENGHUA MARK

Of a pear shape body to a wristed neck to an ovoid top and short rim, painted with clouds and a dragon meander above a petal lappet band on the exterior and frieze leaves the band on the neck, the base with six-character Chenghua seal mark and period. H:14.8cm

Provenance: Estate of the late Harry Geoffrey Beasley (1881-1939) British anthropologist and curator of Cranmore Ethnographical Museum.

Estimate CA\$1,500 - CA\$2,000



152

青釉暗刻双耳瓶 《大清乾隆年制》款 (底有洞)
CELADON GLAZE DOUBLE EAR VASE QIANLONG MARK

The vase of globular form with a slightly waisted neck, the shoulder flanked with two ears on the sides and attached with a ring, the body incised with decorative patterns, the vase covered overall in light-blue tone and the base with a damaged six-character Qianlong Seal. H:19.5, D(rim):7.8cm

Povenance: Estate of the late Harry Geoffrey Beasley (1881-1939) a British anthropologist and curator of Cranmore Ethnographical Museum.

Estimate CA\$2,000 - CA\$3,000



153

明花瓣龙泉水洗
LONGQUAN BRUSH WASHER

The side of the brush washer potted in the form as a band of petals, with a ring in the middle, the body covered overall with celadon glaze, the base with a ring of unglazed surface revealing the buff body. D:12.8cm,H:4cm

Provenance: Estate of the late Harry Geoffrey Beasley (1881-1939) a British anthropologist and curator of Cranmore Ethnographical Museum.

Estimate CA\$3,000 - CA\$4,000



154

宋 龙泉碗 带座 (鲍氏旧藏)

LONGQUAN CELADON LOTUS BOWL,
SONG

The rounded sides lightly molded on the exterior with a band of upturned lotus petals, covered overall in a glaze of soft blueish sea-green tone, pooling in the recesses, which ends neatly at the foot. D: 18cm, H: 7 cm

Provenance: H. H. PAO's previous collections.

Estimate CA\$3,000 - CA\$5,000



155

明以前 青釉小碟

CELADON GLAZE PLATE, BEFORE MING

Of five petal everted form rising from a straight foot, overall celadon glazed with finely lined a strip of brown at the rim. W: 17.5cm, H: 3.3cm

Provenance: Estate of the late Harry Geoffrey Beasley (1881-1939) a British anthropologist and curator of Cranmore Ethnographical Museum.

Estimate CA\$2,000 - CA\$4,000



156

明以前 哥窑小碟

GE-TYPE PLATE, BEFORE MING

The dish of deep sides with a four-lobed mouth, the body covered overall with a greyish-blue glaze suffused with a matrix of dark and golden crackle, the mouth rim glazed brown. W: 16.3cm, H: 3.4cm

Provenance: Estate of the late Harry Geoffrey Beasley (1881-1939) a British anthropologist and curator of Cranmore Ethnographical Museum.

Estimate CA\$2,000 - CA\$4,000



157
釉里红荷花杯对 《大清康熙年制》 款 带座
 PAIR OF IRON-RED GLAZE CUPS

Each cup of deep side rising from a short foot ring, the mouth potted with petal-like pattern and the body decorated in an iron-red glaze with lotus blossom petals, the interior, and base glazed white with six-character Kangxi seal. D:8cm, H:7.4cm

Provenance: Estate of the late Harry Geoffrey Beasley (1881-1939) a British anthropologist and curator of Cranmore Ethnographical Museum.

Estimate CA\$2,000 - CA\$4,000



158
二十世纪 粉彩八仙人物瓷片
 GROUP OF FOUR FAMILLE-ROSE TILES, 20TH C.

The tiles each painted with two figures, calligraphy on the left corner, signed with two seals. L:20.1, W:13.1cm, H:0.3cm

Provenance: Estate of the late Harry Geoffrey Beasley (1881-1939) a British anthropologist and curator of Cranmore Ethnographical Museum.

Estimate CA\$300 - CA\$500



159
青瓷凤尾尊
 CELADON GLAZE VASE

The vase of the globular body raised from a tapered foot to a long waisted neck with an everted big mouth, the neck potted with nine rings and the body decorated with poney and vines the base with petal decorations, covered in a celadon glaze with the unglazed foot ring revealing the buff ware. D(rim): 11.1cm, H:29.5cm

Provenance: Estate of the late Harry Geoffrey Beasley (1881-1939) a British anthropologist and curator of Cranmore Ethnographical Museum.

Estimate CA\$3,000 - CA\$4,000



160
黄釉暗刻龙纹大碗 《大清康熙年制》 款
 YELLOW GLAZE BOWL

The bowl of globular form with a slightly everted mouth, the body incised with the dragon in pursuit of a flaming ball amidst scrolling clouds above the sea, the exterior and the interior covered with bright yellow glaze except the base glazed white with six-character Kangxi seal. D:18.2cm, H:8.3cm

Provenance: Estate of the late Harry Geoffrey Beasley (1881-1939) a British anthropologist and curator of Cranmore Ethnographical Museum.

Estimate CA\$500 - CA\$800



161
冰梅碗 《康熙年制》款
 BLUE AND WHITE 'PRUNUS' BOWL

The bowl of globular form with a slightly everted mouth, the body decorated with a blossoming plum tree against a blue ground, the base with four-character Kangxi seal. D:23.3cm, H:10cm

Provenance: Estate of the late Harry Geoffrey Beasley (1881-1939) a British anthropologist and curator of Cranmore Ethnographical Museum.

Estimate CA\$200 - CA\$400



162
龙纹小碗 《大清光绪年制》款
 FAMILLE-ROSE 'DRAGON AND PHOENIX' BOWL

The bowl of a tapered body with an everted mouth all supported on a short cylindrical foot, the body decorated with a band of a key-fret pattern on the mouth rim with dragon and Phoenix in pursuit of a flaming ball against scrolling clouds under, the base with six-character Guangxu seal. D:12.6cm, H:5.5cm

Provenance: Estate of the late Harry Geoffrey Beasley (1881-1939) a British anthropologist and curator of Cranmore Ethnographical Museum.

Estimate CA\$200 - CA\$400



163
青花婴戏罐
 BLUE AND WHITE 'BOYS' JAR

The jar of tapered globular form rising to a short waisted neck and an everted mouth, the body decorated with three pairs of boys holding lotus leaf and blossom against the dark blue ground. D(rim):8.9cm, H:17 cm

Provenance: Estate of the late Harry Geoffrey Beasley (1881-1939) a British anthropologist and curator of Cranmore Ethnographical Museum.

Estimate CA\$1,500 - CA\$2,000



164
铂金 900 红珊瑚戒指
 RED CORAL RING PLATINUM 900

A band ring designed with an accented red coral sphere, with platinum 900 band. D:10mm

Estimate CA\$1,500 - CA\$2,000



165
古董 16K 黄金沙丁红珊瑚镶天然珍珠胸针
 CORAL AND PEARL BROOCH

A delicate flower coral carving decorated with pearls surmounted leaf and vine carvings, in 16K gold, accompanied with a box. W:5.5cm

Estimate CA\$1,000 - CA\$1,500



166
蜜蜡银手镯
 YELLOW AMBER AND SILVER BRACELET

This bangle features an open shank punctuated with a yellow amber semi-sphere in the middle and intricate carving designs around. W:7cm

Estimate CA\$300 - CA\$500



167
清 绿松石老玛瑙项链
 TURQUOISE AND AMBER NECKLACE

Comprising 4 small turquoise bead and 4 almond shape amber decoration and a large turquoise bead, attached at the back two suspending strands with smaller turquoise beads and terminated with a cylindrical turquoise drop. L:76cm

Estimate CA\$700 - CA\$1,200



168
民国 紫水晶项链
 AMETHYST NECKLACE

Supporting an openwork jade carving pendant framed in gold, the stone of pale white tone with violet inclusions. W(pendant): 4cm; 80 beads

Estimate CA\$800 - CA\$1,200



169
晚清 绿松石项链
 TURQUOISE NECKLACE

Comprising 18 semi-spherical turquoises mounted on the chain and a pendant with openwork floral design circled by 13 semi-spherical turquoises mounted on the pendant suspending 7 irregular turquoise drop. L:49cm

Estimate CA\$500 - CA\$800



170
清末银链带宝石
 SILVER CHAIN WITH GEMS, LATE QING

Suspending a carved pendant beneath the jade mounted teapot decoration terminating with a suspended orange bead drop in between two suspended turquoise bead drop, further suspending from the chain two other standstear-shape orange beads. L:82cm

Estimate CA\$600 - CA\$1,000



171
晚清 银宝石小项链
 SILVER AND GEMSTONE NECKLACE

Supporting a pendant with coral piece framed in silver terminating with coral bead and turquoise tear-shaped drop from a front sautoir design set with coral and turquoise and blue beads. L:57cm

Estimate CA\$400 - CA\$700



172
清 银宝石挂件一对
 PAIR OF SILVER GEMSTONE PENDANTS

The set comprised of two strands of suspending chain with beads decorated beneath a mobile bottled vase incised with floral design and figure, a butterfly carving hanger and a flower carving hanger molded on the two separate chains. Butterfly hanger: L:20cm; Flower hanger: L:18cm

Estimate CA\$300 - CA\$500



173
清末银链带宝石
 SILVER CHAIN WITH GEMS, LATE QING

Supporting a carved openwork pendant terminating with five stands of the orange or turquoise bead from a sautoir design decorated with two silver triangular shape carvings and turquoise and coral beads and almond-shaped silver carved beads and terminated with two suspending three-legged frog drop. L:100cm

Estimate CA\$600 - CA\$1,000



174
清 银绿松石瓶型挂件
 SILVER AND TURQUOISE 'VASE' SHAPE PENDANT

Comprising of a strand of suspending chain with a green bead attached beneath the mobile openwork bottle design terminating with peach carving bead. L:21.5cm

Estimate CA\$300 - CA\$500



175
晚清 绿松石烧蓝手链
 TURQUOISE AND ENAMELED BRACELET

Comprised of six raised enamels rectangular bent pieces attached together, decorated with turquoise stone inset in the center of the middle four bend pieces and two pieces at the end attached with closure design. L:19.2cm

Estimate CA\$1,000 - CA\$1,500



176
晚清 白玉烧蓝手链
 WHITE JADE WITH ENAMELED BRACELET

Comprised of six raised enamels rectangular bent pieces attached together, decorated with openwork jade carving inset in the center of the middle four bend pieces and two pieces at the end attached with closure design. L:20cm

Estimate CA\$1,000 - CA\$1,500



177
晚清 珊瑚胸针及绿松戒指一组
 SET OF CORAL BROOCH AND TURQUOISE RING

The set comprised of a floral design mandala coral brooch with the flowers painted with precision; and a turquoise ring with detailed pattern frame, accompanied with a box. Pendant: D:3.8, Ring: D:1.8cm

Estimate CA\$500 - CA\$800



178
晚清 银链带宝石
 SILVER CHAIN WITH GEMS, LATE QING

Supporting a pendant set with intricate openwork depicting a figure riding on the back of a flying bird holding an instrument with both hands and terminating with five suspended tear-shaped coral or turquoise bead, and suspending from the chain two other stands tear-shaped coral and turquoise beads. L:82cm

Estimate CA\$600 - CA\$1,000



179
玛瑙手链
BANDED AGATE STONE BEAD BRACELET

Comprised of six olive shape banded agate stone beads. L(bead): 3.75cm Provenance: Prominent family of UK decent, jade acquired c1950-1975. Provenance: Prominent Canadian family collection of British descent items acquired c1950-1975. Further provenance: Estate of the late Harry Geoffrey Beasley (1881-1939) a British anthropologist and curator of Cranmore Ethnographical Museum.

Estimate CA\$300 - CA\$500



180
玛瑙手链
BANDED AGATE STONE BEAD BRACELET

Comprised a strand of banded agate stone beads joined together forming a bracelet. 22 beads Provenance: Prominent family of UK decent, jade acquired c1950-1975. Provenance: Prominent Canadian family collection of British descent items acquired c1950-1975. Further provenance: Estate of the late Harry Geoffrey Beasley (1881-1939) a British anthropologist and curator of Cranmore Ethnographical Museum.

Estimate CA\$300 - CA\$500



181
红玉笔洗
RED JADE BRUSH WASHER

Of octagonal prism tapering to a straight foot, overall plain and polished surface, the interior with a rounded edge rectangular hollow, the stone of celadon with russet and copper-red inclusions. L:6cm, W:7.5cm, H:4cm

Estimate CA\$300 - CA\$500



182
晚清 绣品一组三件
THREE EMBROIDERY SILK PIECES

A set of three embroidery pieces on white paper, the bell shape piece with flower and patterned outline embroideries; the oval-shaped piece attached with two Chinese knots; the long piece with flowers and scrolling line embroideries. Bell: L:11.8cm; Oval: W:10cm; Long: L:30cm

Estimate CA\$300 - CA\$500



183
清 硬木文盘
HARDWOOD TRAY

Of rectangular form with mortise and tenon frame construction with the tongue-and-groove floating panel, the wood of the rich reddish-brown wood finely figured with attractive dark brown streaks. L:49cm, W:30cm, H:1.75cm

Estimate CA\$600 - CA\$1,000



184
赏石连座
YELLOW SCHOLAR'S ROCK

Expanding vertically on a narrow foot to a broad top with numerous grooves, troughs and round perforation, the stone of yellow tone on a fitted hardwood stand. W:20cm, H:44 cm

Provenance: Estate of the late Harry Geoffrey Beasley (1881-1939) a British anthropologist and curator of Cranmore Ethnographical Museum.

Estimate CA\$300 - CA\$500



185
赏石连座
COPPER RED SCHOLAR'S ROCK

Of vertical orientation towering in an irregular outline towards a peak, the stone of copper red with white inclusions on a fitted hardwood stand. W:19.5cm, H:43cm

Provenance: Estate of the late Harry Geoffrey Beasley (1881-1939) a British anthropologist and curator of Cranmore Ethnographical Museum.

Estimate CA\$300 - CA\$500



186
民国 铜手炉
COPPER HAND WARMER AND COVER

With rounded shoulders and a tapering body, set with two hinged semi-circular handles folding to each side of a short raised mouth rim fitted with a pierced cover, the top of the cover cast with interlaced floral design and the base carved with an immortal old man playing chess next to bamboo. D:15.3cm. H:9 cm

Provenance: Estate of the late Harry Geoffrey Beasley (1881-1939) a British anthropologist and curator of Cranmore Ethnographical Museum.

Estimate CA\$200 - CA\$400



187
晚清 搪瓷九子攒盘
SET OF CLOISONNE SWEETMEAT TRAYS

The set comprising of nine plates, one of circular shape and eight of fan shape with petal-like side surrounding the round plate to form a bigger circle, all plates decorated with the similar pattern with white flowers and green tree against a dark blue background, the reverse covered in light blue. fan shapex8: W:13.5cm, H:2cm; plate: D:17.3cm, H:1.7cm

Provenance: Estate of the late Harry Geoffrey Beasley (1881-1939) a British anthropologist and curator of Cranmore Ethnographical Museum.

Estimate CA\$300 - CA\$500



188

**晚明 鑲金銅海獸紋龍耳簋式爐帶木蓋
「雲間胡文明製」刻款**

A RARE PARCEL-GILT BRONZE CENSER 17TH
C. YUNJIAN SEAL

YUNJIAN HU WENMING ZHI SEAL MARK.
Of a globular body supported on a slightly
everted foot, flanked with two beast carving
handles, bronze with golden tone exterior
decorated with mythical creatures in a fire
scenery sandwiched between horizontal
bands and repeated vines meander and
butterfly carvings in relief, accompanied
with a openwork floral cover with a jade
surmounted, damage on the cover. W:18cm,
H:16cm

Provenance: Estate of the late Harry Geoffrey
Beasley (1881-1939) a British anthropologist
and curator of Cranmore Ethnographical
Museum.

Estimate CA\$15,000 - CA\$20,000



189

清 白玉太湖石形山子

JADE SCHOLAR'S STONE, QING

Standing on a foot relatively narrower than the top, expanding
towards the top with numerous grooves, troughs, and round
perforation, the stone of celadon tone with russet inclusions,
accompany with fitted stand. W: 9cm, H:17cm stand.

Estimate CA\$600 - CA\$1,000



190

玉卵石珮

WHITE AND RUSSET JADE PEBBLE

Of oval pebble form, the stone of white tone with russet inclusions.
L:7cm W:4cm

Estimate CA\$400 - CA\$700



191
清 竹雕水盂
 CARVED BAMBOO 'FROG' WATERPOT

Of compressed body, incised with a key-fret band and three lively carved frogs at the rim. D:8.9cm, H:4.5cm

Estimate CA\$500 - CA\$800



192
明末清初 德化白瓷犀角式盃
 CHINESE BLANC DE CHINE LIBATION CUP 18TH CENTURY

Of a short cylinder rising up to a fluted rhombus shape opening, decorated with animals and trees carvings on the exterior, covered with white glaze, accompanied with a fitted stand and a fitted box. W:10.4cm, H:6 cm

Provenance: Estate of the late Harry Geoffrey Beasley (1881-1939) a British anthropologist and curator of Cranmore Ethnographical Museum.

Estimate CA\$800 - CA\$1,200



193
铜嵌银丝活环象首耳大炉 石叻款
 DOUBLE ELEPHANT EARS TRIPOD INCENSE BURNER SHISOU MARK

The censer modeled in the form of a rhinoceros horn libation form with two elephant ears, the side carved with pine tree, crane and goat, silver inlay, Shisou seal mark, accompanied with a fitted stand and a fitted box. W:28cm, H:16.2cm

Provenance: Estate of Dr. Peter M. Greiner, Author Astronomical Instruments End of the Shang or Beginning of the Chou Dynasty, University of Pittsburgh, Pennsylvania

Estimate CA\$1,000 - CA\$1,500



194
清 银镶白玉镇纸
 JADE PAPER WEIGHT

Divide into two sections of the five-robe ruyi bronzed base to a seven-robe shape jade top with a high-relief carving of figures, tree and mountain scenery. W:10cm, H:3.7cm

Estimate CA\$3,000 - CA\$5,000



195
玉把木盖龙双耳香炉 《大明宣德年制》款
 BRONZE CENSER WITH JADE HANDLE WOOD COVER

Of a compressed archaic hu form supported on a slightly flared galleried foot, flanked with two detailly carved dragon handles, the exterior decorated with a horizontal band and the extended dragon tails carvings in relief, accompanied with an openwork floral carving cover surmounted by the seated figure jade carving, the base with six characters Xuande seal and period. W:16.8cm, H:15cm

Estimate CA\$3,000 - CA\$5,000



196
硬石龙纹盖盒
 ROUND HARD STONE BOX WITH DRAGONS

Of circular sections with repeated flower motif bands on the body all the way to the top of the cover decorated with carvings of two beasts surrounding the circle, the stone of pale celadon tone. D:19.5cm, H:8cm

Estimate CA\$500 - CA\$700



197
清 硬木镶白玉如意
 JADE RUYI SCEPTRE

The scepter is inset with three jade plaques to the terminal, mid-section, and bottom of the shaft, carved with peaches and floral design. L:45.7cm
 Provenance: Estate of the late Harry Geoffrey Beasley (1881-1939) a British anthropologist and curator of Cranmore Ethnographical Museum.

Estimate CA\$1,000 - CA\$1,500



198
清代 颜维锦画像 罗葆祺题字轴
 ANCESTOR PORTRAIT
 HANGING SCROLL

Of two sections, calligraphy on golden paper at the top and portrait below depicting a person sitting straight wearing winter robe with flower blossoms on the background, ink and color on paper, signed one artist seal. L:200cm, W:113 cm

Estimate CA\$1,500 - CA\$2,000



199
恭親王 (1833-1898) 书法绫本
 AISIN GIORO YIXING (1833-1898) CALLIGRAPHY

Calligraphy, ink on colour patterned paper, sign by the artist with one seal, mounted and glass framed. W:33.3cm, L:41.8cm

Estimate CA\$2,500 - CA\$3,500



200
谭延闿 (1880-1930) 对联 水墨纸本连框
 上款人为著名哲学家缪篆 (名画家范曾外祖父)
 TAN YANKAI (1880-1930) CALLIGRAPHY
 COUPLET

Calligraphy, ink on paper, signed by the artist with five seals, a dedication to Zicai MiuZhuan, a pair mounted for framing. L:147cm, W:39.5cm

Estimate CA\$3,000 - CA\$5,000



201
吴道镛 (1852-1936) 对联 水墨纸本连框
 上款人为著名哲学家缪篆 (名画家范曾外祖父)
 WU DAORONG (1852-1936) CALLIGRAPHY
 COUPLET

Calligraphy, ink on paper, signed by the artist with two seals, a dedication to Zicai MiuZhuan, a pair mounted for framing. L:133cm, W:30.5cm

Estimate CA\$2,000 - CA\$3,000



202

“伴云” 灵璧赏石 带座 (1759 年 刻款)

LINGBI SCHOLAR'S ROCK, INCISED 1759

Of irregular craggy outline with a towering peak bordered by a pierced out-cropping, the dark greyish black stone with white veining, with numerous lengthy inscriptions, one composed and signed by Cao Xiu Yuan; another by Huang Yi (1744-1802) with accompanying seal of the artist. H:42.5cm Provenance: Sotheby's New York March 24th, 1998.

Estimate CA\$20,000 - CA\$30,000

203

灵璧赏石 带座

LINGBI SCHOLAR'S ROCK WITH STAND

Towering in an irregular outline towards a massive peak, the dark grey stone with veining, on a correspondingly carved hardwood stand. W:67cm, H:31cm Provenance: Sotheby's New York March 24th, 1998.

Estimate CA\$20,000 - CA\$30,000





204
青花矾红景观鼻烟壶 《大清雍正年制》款
 CHINESE BLUE WHITE & COPPER-RED SNUFF BOTTLE

Of cylindrical body with rounded shoulders, depicting a figure sitting behind a table between two standing figures in an architecture background with a donkey laying on the ground, blue and white and copper-red glazed, base with six characters Yongzheng mark and period, accompanied with a stopper. D:3.5cm, H:9.3cm

Provenance: From Doctor Peter Greiner estate collection.

Estimate CA\$300 - CA\$500



205
青花矾红莲纹鼻烟壶
 CHINESE BLUE WHITE & COPPER-RED LOTUS SNUFF BOTTLE

Of archaic "hu" form, the exterior painted with 12 copper-red lotus blossom painted on blue line patterned background, blue and white and copper-red glazed, accompanied with a stopper. D:4.3cm, H:7.8cm

Provenance: From Doctor Peter Greiner estate collection.

Estimate CA\$300 - CA\$500



206
玛瑙料器内画鼻烟壶
 AMBER PEKING GLASS REVERSE PAINTED SNUFF BOTTLE

Of rectangular body with rounded shoulder, painted inside the Peking amber glass of a child and an old man talking to each other, accompanied with apple jadeite lid stopper. (1874-1908) W:5cm, H:7 cm

Provenance: From Doctor Peter Greiner estate collection.

Estimate CA\$200 - CA\$400



207
清白玉鹅卵石形鼻烟壶
 WHITE & RUSSET PEBBLE STONE SNUFF BOTTLE, QING

Of irregular pebble form, the stone of creamy white with russet inclusions, accompanied with a stopper. H:6.75cm

Provenance: From Doctor Peter Greiner estate collection.

Estimate CA\$600 - CA\$1,000



208
玻璃内画鼻烟壶
 CHINESE GLASS REVERSE INSIDE PAINTED SNUFF BOTTLE

Of flatten rectangular body and rounded shoulders tapering to a short foot, reverse painted glass depicting children playing on grassland with artist seal mark, accompanied with a stopper. W:5cm, H:7.8cm

Provenance: From Doctor Peter Greiner estate collection.

Estimate CA\$200 - CA\$400



209
清莲花石雕鼻烟壶
 AGATE STONE LOTUS CARVED SNUFF BOTTLE, QING

Of flatten rectangular body tapering to a flat base, lotus scene with fish carved in high relief on the front, flower incised on the back, accompanied with a stopper. W:4 cm, H:6.75cm

Provenance: From Doctor Peter Greiner estate collection.

Estimate CA\$300 - CA\$500



210
晚清 银质鼻烟壶
CHINESE SILVER FOUR-SECTION SNUFF BOTTLE, QING

Of flattened globular body surmounted in flared footing, flanked with lion carvings on the shoulder, the exterior decorated with mandala carving accented with coral and turquoise stone in the center, accompanied with a coral and turquoise mount stopper. W:4 cm, H:6.3cm

Provenance: From Doctor Peter Greiner estate collection.

Estimate CA\$200 - CA\$400



211
清 白玉鼻烟壶
WHITE JADE SNUFF BOTTLE APPLE JADEITE LID, QING

Of rounded rectangular body and shoulder rising to a straight neck, creamy white stone accompanied with apple jadeite lid stopper. W:3cm, H:6.5cm

Provenance: From Doctor Peter Greiner estate collection.

Estimate CA\$300 - CA\$500



212
清 天然琥珀鹅卵石形鼻烟壶
AMBER PEBBLE FORM SNUFF BOTTLE, QING

Of a pebble from natural amber stone snuff bottle, accompanied with a matching stopper, break to the center. w:4 cm, H:8 cm

Provenance: From Doctor Peter Greiner estate collection.

Estimate CA\$200 - CA\$400



213
清 白玉鹅卵石形鼻烟壶

Of a pebble form white jade snuff bottle, the stone of pale white tone with white inclusions, accompanied with a stopper. W:4 cm, H:6.8cm

Provenance: From Doctor Peter Greiner estate collection.

Estimate CA\$300 - CA\$500



214
清 青玉鼻烟壶
CELADON JADE SNUFF BOTTLE, QING

Of flattened ovoid body rising to a straight neck, the stone of celadon tone, accompanied with a stopper. W:4 cm, H:5.8cm

Provenance: From Doctor Peter Greiner estate collection.

Estimate CA\$300 - CA\$500



215
清 翡翠石刻鼻烟壶
JADEITE STONE SCENIC CARVED SNUFF BOTTLE, QING

Of flattened ovoid body on straight neck and foot, carved in relief of birds and ducks around the exterior, accompanied with a stopper. W:3.8cm, H:6.8cm

Estimate CA\$300 - CA\$500



216
玻璃内画风景双联鼻烟壶
 GLASS REVERSE PAINTED "DOUBLE" SNUFF BOTTLES

Of flattened ovoid body on straight neck and foot, carved in relief of birds and ducks around the exterior, accompanied with a stopper. W:3.8cm, H:6.8cm

Provenance: From Doctor Peter Greiner estate collection.

Estimate CA\$300 - CA\$500



217
18/19 世纪 青玉鼻烟壶
 CELADON JADE FACETED SNUFF BOTTLE, 18/19TH CENTURY

Two snuff bottle attached, each of flattened rectangular form, reverse painted glass depicting bird and duck and sceneries with calligraphy and artist seal, accompanied with a jadeite cover stopper. W:3.8cm, H:6.3cm

Provenance: From Doctor Peter Greiner estate collection.

Estimate CA\$500 - CA\$800



218
晚清民国 铜炉 宣德款
 XUANDE BRONZE CENSER, LATE QING TO REPUBLICAN

A light celadon jade bottle accompanied with an orange coral cover stopper, carved in a flattened globular shape, accompanied with a cushioned box. W:4.7cm, H:5.9cm

Provenance: From Doctor Peter Greiner estate collection.

Estimate CA\$200 - CA\$300



219
硬木三屉都承盘 (文盘)
 HARDWOOD TRAY WITH THREE DRAWERS

Of a rectangular section, the shallow box constructed with plain straight sides resting on four short bracket feet extending from the four corners with three push in drawers beneath the tray surface, the wood patinated to an attractive brown colour with dark brown streaks. L:27.5cm, W:38cm, H:5.5cm

Estimate CA\$1,200 - CA\$1,500



220
清中期 紫砂彩绘壶
 ZISHA POLYCHROME TEAPOT 18TH CENTURY

The pot of globular form, attached with a curved short mouth and metal handle, the lid with a rounded knob, the body painted with scholar's rock, chrysanthemum, blossoming plum tree, and pine tree. all against a reddish-brown ground. D:12.5cm H:14.5cm

Estimate CA\$800 - CA\$1,200



221
明 龙泉三足炉
 LONGQUAN TRIPOD CENSER

Heavily potted and raised on three mask-and-paw feet, the shallow rounded sides incised with decoration pattern, the body covered with a celadon glaze, the center of the basin with an unglazed part revealing the buff ware. H:12.5cm x 26.5cm

Estimate CA\$2,500 - CA\$3,500



222
17-18 世纪 三彩人物壁瓶对
 PAIR OF SANCAI 'FIGURAL' WALL VASES

Each vase decorated with colored blossoms and leaves with a band of key-fret pattern supporting by two children with a 'shou' motif connected with tassel between them. the reverse drilled with a small hole for hanging purposes, accompanied with a fitted stand and a fitted box for both vases.

Estimate CA\$3,000 - CA\$5,000



223
明 料器荷花仙鹤赏瓶对
 A PAIR OF PEKING GLASS 'LOTUS' VASE

Each vase of tapered form rising to an everted mouth, the body carved in low-relief with blossoming lotus and flying cranes, the decoration, mouth rim and foot rim all glazed yellow against the white background. H:25.5cm

Estimate CA\$500 - CA\$800



224
清 粉彩孔雀大盘对
 A PAIR OF FAMILLE ROSE 'PEACOCK' PLATE

Each plate decorated with two peacocks standing on scholar's rock with poney and prunus, surrounded by a band of blossoming prunus. the unglazed foot ring reveals the buff ware. D:25.6cm

Estimate CA\$500 - CA\$800



225
19 世纪 绿釉八卦纹琮式瓶对
 PAIR OF GREEN GLAZED SQUARED 'BAGUA' VASES

Each vase of square form body rising from a short cylindrical foot to a tapered mouth, the body glazed with a blue-ish green tone, the sides decorated with Bagua pattern against a yellow ground, the base with redmark of 'China'. H:18.5cm

Estimate CA\$1,000 - CA\$1,500



226
19 世纪 龙纹大盘
 CLOISONNE ENAMEL 'DRAGON' PLATE

The shallow flat plate of circular form, the rim decorated with a band of ruyi pattern, the interior painted a dragon with a ball in the middle surrounded by two pairs of the dragon in pursuit of a flaming ball, all against a black background with gold cloud patterns, the base with same background design. D:38cm

Estimate CA\$500 - CA\$800



227
墨绿釉小瓶带座
 GREEN GLAZED VASE WITH STAND

The vase of the globular body rising from a straight foot to a slightly waisted long neck, the body covered with dark green glaze, the vase accompanied with a fitted wooden stand. H:17cm

Estimate CA\$2,000 - CA\$3,000



228
清 酱色小碗一对《大清光绪年制》款
 PAIR OF BROWN GLAZE BOWLS, QING

Each bowl in an iridescent brown glaze on the exterior and interior, the rim and base glazed white, the base with the six-characters Guangxu mark in underglaze blue, accompanied with a fitted box. D:12.2cm

Estimate CA\$10,000 - CA\$15,000



229
粉彩寿字纹四方扁瓶 《大清乾隆年制》款
 FAMILLE ROSE 'SHOU' FLAT VASE

The vase of rectangular form, two sides decorated with different styles of 'shou' characters and the other two sides decorated with depiction of ruyi pendant attached with two bats and tassels, each side surrounded by a band of key-fret pattern against a yellow ground, the mouth and base decorated with colorful clouds, the base with six-character Qianlong seal and accompanied with a fitted box. 4cm x 7.1cm x 16cm

Estimate CA\$10,000 - CA\$15,000



230
康熙 青花将军尊 (有损)
 BLUE AND WHITE VASE (REPAIRED), QING

The blue and white vase of the tapering body rising from a spreading recessed base to a rounded shoulder and with a short straight neck, the body decorated with cranes and deer within a mountain with pine trees, the base, and body with lines. H:26cm D:16.5cm

Estimate CA\$500 - CA\$800



231
清中期 山水画瓷板挂屏
 FAMILLE-ROSE PORCELAIN HANGING PANEL 18TH/19TH CENTURY

The porcelain panel painted with an old scholar walking on a bridge, the background painted with houses and pavilion built among mountains with pine trees and river, framed with wooden frame and attached with a robe on the back for hanging purposes. 47cm x 71.5cm

Estimate CA\$2,000 - CA\$3,000



232
粉彩小碗对 《大清乾隆年制》款
 PAIR OF FAMILLE ROSE BOWLS

A pair of small bowls of the tapered body rising to a flat everted mouth with a petal-like rim, the interior decorated with a band of green decoration and the middle painted with Lingzhi and orchid. The exterior painted with Lingzhi and orchid on scholar's rock. The base with six-character Qianlong seal. D:11cm

Estimate CA\$300 - CA\$500



233
清 紫檀百宝嵌扇形盒
 INLAID ZITAN FAN-SHAPED BOX, QING

Of a fan shape box sectioned inlaid with semi-precious stones, depicting flowers and birds and bees, cranes on the concave side and bamboo on the convex side, close to the flared foot carved with a key fret band all around, the timber well-figured and patinated to a smooth dark brown colour. W:35cm, H:11.5cm

Estimate CA\$2,000 - CA\$3,000



234
清 龙纹缂丝挂屏连框 (大)
 'DRAGON' KESI PANEL

The texture of rectangular form with blue ground border decorated with sea wave and scrolling cloud, the central image thread with three dragons playing with flaming balls amidst clouds and bats against a blueground, above a weaving sea. 138cm x 87.5cm with frame

Estimate CA\$1,500 - CA\$2,000



235
清 龙纹缂丝挂屏连框 (小)
 'DRAGON' KESI PANEL

The textile of rectangular form with blue ground border, central images of a blue ground thread with a yellow dragon in pursuit of a flaming ball amidst scrolling clouds above the sea. 82cm x 40cm with frame

Estimate CA\$800 - CA\$1,200

236
清 刺绣仙鹤图挂屏 连框
 AN EMBROIDERED CRANE PANEL

Depicting a crane in the center, surrounded by cloud and objects above the sea on golden background, glass framed. L:25.5cm, W:25.5cm
 Provenance: Prominent Canadian family collection of British descent items acquired 1950-1975. Further provenance: Estate of the late Harry Geoffrey Beasley (1881-1939) a British anthropologist and curator of Cranmore Ethnographical Museum.

Estimate CA\$300 - CA\$500





237

清 墨彩牡丹大将军罐

FAMILLE NOIR EGREEN ENAMELLED JAR, QING

Of baluster body rising from a slightly spreading base, narrowing to a straight mouth rim. The jar has superbly detailed scrolling lotus designs throughout with a unique and rarely found green enamel on black enamel ground. With original lid with fu lion finial. The jar dates from the late Kangxi to earlier Qianlong period, c1700-1750. H:65 cm

Provenance: Prominent Canadian family collection of British descent items acquired 1950-1975. Further provenance: Estate of the late Harry Geoffrey Beasley (1881-1939) a British anthropologist and curator of Cranmore Ethnographical Museum.

Estimate CA\$6,000 - CA\$10,000

238

清 竹根雕

BAMBOO CARVED BOWL

Of organic oval form rising from the straight foot with a naturally occurred hairline crack on the base, interior covered with black lacquered, the exterior of natural wood texture and colour. W:18cm, H:7.3cm

Provenance: Estate of the late Harry Geoffrey Beasley (1881-1939) a British anthropologist and curator of Cranmore Ethnographical Museum.

Estimate CA\$500 - CA\$800



239

清 玉瓦头座屏

FRAMED JADE CARVED OBJECT

Of oval shaped jade finely carved in relief of an elephant covered with mountain scenery rug with a flower pot on top, circulated by vinal and carved objects, flower blossom carved on the reverse side, framed in the mother-of-pearl wood stand. L:9cm, W:22.3cm, H:20 cm

Provenance: Estate of the late Harry Geoffrey Beasley (1881-1939) British anthropologist and curator of Cranmore Ethnographical Museum.

Estimate CA\$3,000 - CA\$4,000



240
龙泉三足炉 (有冲)
 LONGQUAN TRIPOD CENSER

Of compressed globular body rising to a straight neck and an everted rim, supported on three upside-down cone shape legs, celadon glazed with a horizontal band and three textured lines extend from body to the foot, crack in the interior. D:16.1cm, H:12cm

Estimate CA\$500 - CA\$800



241
清碧玉翎管
 CELADON JADE HAT FINIAL

An arched semicircular carving surmounted on a long cylindrical tube with drilled hollow space in the cylindrical tube, the stone of pale white tone with celadon inclusions. D:1.4cm, H:6.6cm

Estimate CA\$500 - CA\$800



242
青玉小碗
 CELADON JADE BOWL

The jade carved cup of a bell-shaped body supported on straight foot with a smooth polished exterior, the stone of celadon tone with black inclusions. D:8.5cm, H:5.4cm

Estimate CA\$500 - CA\$800



243
明青瓷小碟, 甜白小碗一组
 GROUP OF CELADON PLATE AND WHITE BOWL

Of two porcelain objects, the small plate of everted rim decorated with molded fish and flower design in the center and molded ket fret band on the interior, all over celadon glazed except the rim with no glaze; the dish of a hemispherical form supported on short foot with mandala floral design molded on the interior, unglazed base and rim edge. Plate: D:10cm, H:1.8cm; Dish: D:9.5cm, H:3.4cm

Estimate CA\$500 - CA\$800



244
清料珠漆盒
 LACQUERED BOX AND PEIKIN GLASS SPHERE

Of circular sections with fabric attached on the side and cushions on the top cover decorated with a large Peking glass sphere and two styles of Chinese lucky tie hanging, lacquered interior, and base. D:19cm

Estimate CA\$200 - CA\$300



245
晚清掐丝珐琅长颈瓶
 LONG NECK CLOISSONNE VASE

Of compressed globular body to a narrow cylindrical neck to a gallery rim, sturdily cast on straight foot, the exterior decorated with three bright cloisonné enamels ruyi decorated bands on the rim and midsection and foot, flowers and patterns cloisonné enamels on a green background. H:31.5cm

Estimate CA\$600 - CA\$1,000



246
民国 掐丝珐琅盖罐黑色
 CLOISONNE JAR WITH COVER

Of globular body to short straight neck with gallery rim, paired with a cover with the interior painted in blue, the exterior decorated with floral design and scroll pattern all over the vessel and the cover. H:20.5cm

Estimate CA\$500 - CA\$800



247
17-18 世纪 双耳字身炉
 DOUBLE-EARED CENSER

Of globular body rising from flared foot to a slightly recessed wrist and everted rim, flanked with two beast ears, decorated with key fret decorated bands on the body and the foot, holes on the base. H:10.4cm

Estimate CA\$600 - CA\$1,000



248
豆青釉堆白堆瓷梅花天球瓶
 CELADON GLAZE VASE

Of globular body rising to a long cylindrical neck, supported on a short foot, celadon glazed with branches and flower blossoms and birds carved in white. H:19.5cm

Estimate CA\$200 - CA\$300



249
19 世纪 茶叶末釉方瓶一对
 PAIR OF TEA-DUST GLAZE VASES

Of rectangular form tapering to a square shape indented base, rising to a recessed neck to a gallery rim, the vessel glazed in greenish-brown color, small color chipped off on the rim of the one vase. H:20cm

Estimate CA\$1,500 - CA\$2,000



250
珊瑚人物雕件
 CORAL FIGURE CARVING

Depicting a vividly carved figure standing with the free-flowing clothes, pierced with a hole and a strand attached at the top, the stone of creamy white with russet inclusions. H:5.3cm

Estimate CA\$300 - CA\$500



251
刘文西 (1933-) 铅笔画两幅连框
 LIU WENXI (1933-) PENCIL DRAWINGS

A portrait, pencil on paper, signed and dated 1998 by the artist, glass framed. L:36cm, W:25.5cm; Depicting a person sitting with barefoot holding a piece of paper with both hand, pencil on paper, signed and dated 1987 by the artist, glass framed. L:35.5cm, W:25.5cm

Estimate CA\$2,000 - CA\$3,000

252
章友芝 (1917-1983) 对联
 ZHANG YOUZHI (1917-1983)
 COUPLET

Calligraphy, ink on paper, signed by the artist with five seals. Each: L:46cm, W:39.5cm

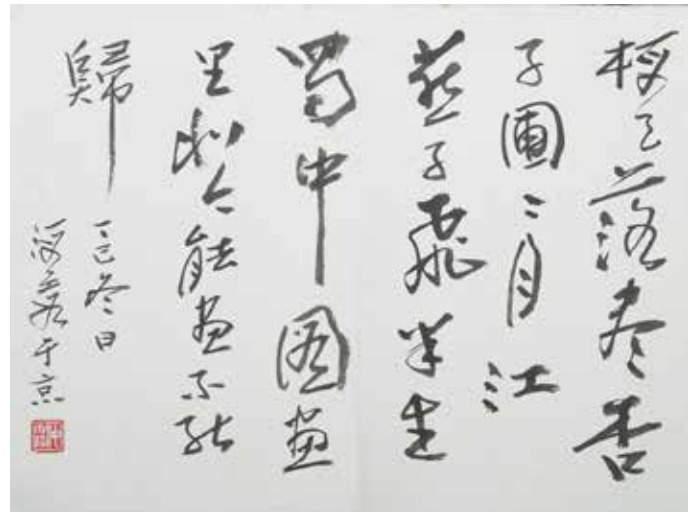
Estimate CA\$600 - CA\$1,000



253
星云大师 (1927-) 书法
 HSING YUN (1927-)
 CALLIGRAPHY

Calligraphy, ink on paper, signed with two seals. L:70cm, W:33.5cm

Estimate CA\$1,000 - CA\$1,500



254
何海霞 (1908—1998) 书法
 HE HAIXIA (1908-1998) CALLIGRAPHY

Calligraphy, ink on paper, signed by the artist with one seal. L:22.8cm, W:31.8cm

Estimate CA\$600 - CA\$1,000



255
首饰一组三件
 SET OF THREE JEWELLERIES

The set comprised of two blue stone earrings in lever back design; a coral pendant framed floral pattern design; accompanied with a box. Bluestone: L:1.8cm; Pendant: L:3 cm

Estimate CA\$300 - CA\$500



256
白玉鹅把件连座
 JADE GOOSE CARVING

Depicting a vivid carving stone of a small goose beside the large duck hold the stem extension of the lotus leaf on the bottom, of celadon tone with white inclusions, accompanied with a wooden stand. L:2.5cm,W:5cm, H:4cm

Estimate CA\$600 - CA\$1,000



257
清 铜制太平有象烛台
 MINIATURE 'ELEPHANT' INCENSE HOLDER, QING

Of four-lobe globular body the midsection with two elephant head carving, surmounted by a flaring rim, supported on a base of an vivid elephant carving, decorated with ruyi decorated jewelries and mixed colour stones on the exterior, the elephant on the base carrying a blanket in gold colour with a drilled hole under the elephant's belly. H:25.7cm

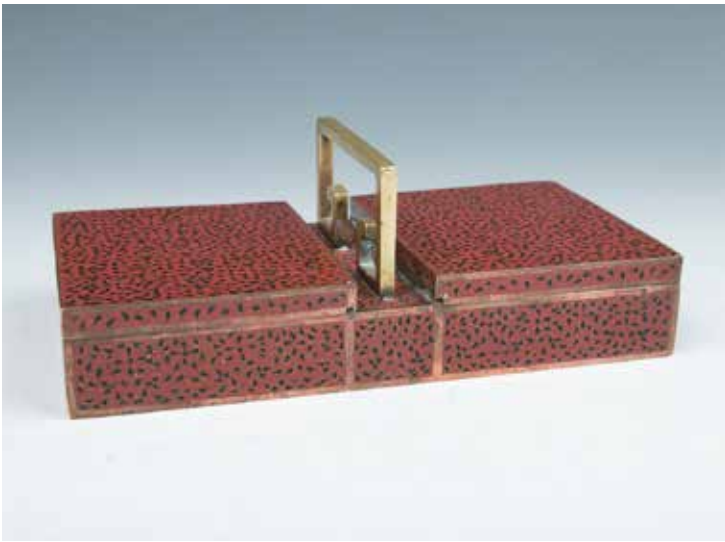
Estimate CA\$4,000 - CA\$6,000



258
清 宝石镶嵌玉柄宝刀
 A TURQUOISE AND CORAL INLAID SWORD, QING

Flanked with hanging ear, caring patterns and turquoise and coral molded on the golden cover, the hard stone hilt of celadon tone with dark inclusions. L:53.5cm

Estimate CA\$1,500 - CA\$2,000



259
铜胎掐丝珐琅方提盒
 RECTANGULAR CLOISSONNE BOX

Of rectangular form with a key fret design handle mold in the middle between the two square-shaped storage section with latch cover that opens upward, blue interior and the base. L:8.9cm, W:20cm

Estimate CA\$500 - CA\$800



260
粉彩大盘《大清乾隆年制》款（有缺口）
 FAMILLE ROSE QIANLONG BIG CHARGER (W CHIP)

Of shallow rounded sides rising from a short foot to a gently flared rim, painted on the interior six sceneries with purple and yellow and blue depicting figures or animals framed in a mandala pattern design and Bagua in the center, base with six-character Qianlong mark and period, with chips on the plate. D:33.6cm, H:4.8cm

Provenance: Estate of the late Harry Geoffrey Beasley (1881-1939) a British anthropologist and curator of Cranmore Ethnographical Museum.

Estimate CA\$200 - CA\$400



261
柠檬绿釉小天球瓶《大清雍正年制》款
 VERY RARE CHINESE LIME-GREEN VASE,
 YONGZHENG MARK

Of ovoid body rising to a cylindrical neck, the exterior cover in a lime-green glaze, the interior and the base white glazed, base with six characters Yongzheng mark and period, accompanied with a wood stand. D:12.5cm, H:21 cm Provenance: Prominent Canadian family collection of British descent items acquired c1950-1975. Further provenance: Estate of the late Harry Geoffrey Beasley (1881-1939) a British anthropologist and curator of Cranmore Ethnographical Museum.

Estimate CA\$20,000 - CA\$30,000



262
清 鎏金银鱼羽毛和橙色珊瑚珠吊坠
KINGFISHER FEATHER, ORANGE CORAL BEAD
PENDANT, QING

Of double gourd shape gilt-silver pendant with kingfisher feather decorated, filled with coral beads in the center, suspending a tear shape drop filled with coral beads. L:7cm, W:3.5cm

Provenance: Estate of the late Harry Geoffrey Beasley (1881-1939) a British anthropologist and curator of Cranmore Ethnographical Museum.

Estimate CA\$200 - CA\$400



263
清 鎏金银器, 金鱼羽毛收藏 (四件)
KINGFISHER FEATHER HAIR -ORNAMENTS,
QING

A set of four gilt-silver kingfisher feather ornaments: a hairpin attached with flower and butterfly carvings, a decoration piece with leaves and flowers carvings, a butterfly brooch, and a goldfish brooch. Hairpin:W:14.5cm; Decoration piece: W:4 cm; Butterfly brooch: W: 4.8cm; Goldfish brooch: W:5.5cm

Provenance: Estate of the late Harry Geoffrey Beasley (1881-1939) a British anthropologist and curator of Cranmore Ethnographical Museum.

Estimate CA\$200 - CA\$400



264
晚清 绿松石雕及掐丝银项链 + 耳环套装 纯度标记
TURQUOISE & FILIGREE NECKLACE &
EARRING SET, QING

The set comprised of two items, a pair of stud earrings of openwork turquoise carving mounted in filigree silver frame; the necklace comprised of eight openwork turquoise mounted in silver pieces alternating with eight smaller openwork silver carved pieces. Earrings: L:3 cm, W:2.3cm; Necklace: L41cm

Provenance: Estate of the late Harry Geoffrey Beasley (1881-1939) a British anthropologist and curator of Cranmore Ethnographical Museum.

Estimate CA\$300 - CA\$500



265
蜜蜡项链 14K 金扣
CORAL GRADUATED BEAD NECKLACE

A strand of salmon-orange coral glazed graduated beaded necklace, ascending from large to small from the center to the back attached with a 14k gold clasp. L:74cm, 110 beads

Provenance: Estate of the late Harry Geoffrey Beasley (1881-1939) a British anthropologist and curator of Cranmore Ethnographical Museum.

Estimate CA\$300 - CA\$500



266
20 世纪早期 绿硬石珠子项链
HARDSTONE BEADED NECKLACE, EARLIER
20TH C.

A strand of semi-transparent green hardstone beaded necklace, placed in order from larger beads to smaller beads from the center to the back attached with an oval shape flower filigree silver clasp. L:60cm, 45 beads

Provenance: Estate of the late Harry Geoffrey Beasley (1881-1939) a British anthropologist and curator of Cranmore Ethnographical Museum.

Estimate CA\$300 - CA\$500



267
蜜蜡项链
AMBER GRADUATED BEADED NECKLACE

A strand of rare natural butterscotch amber graduated beaded necklace, ascending from large to small from the center to the back with an oval shape flower filigree silver clasp. L:67cm, 53 beads

Provenance: Estate of the late Harry Geoffrey Beasley (1881-1939) a British anthropologist and curator of Cranmore Ethnographical Museum.

Estimate CA\$800 - CA\$1,200



268
明晚期 椰壳杯
 CARVED COCONUT WINE CUP, LATE MING

Of globular body to an everted rim on a flat base, carved in high-relief a panoramic landscape of birds and clouds above boats on water and architectures on land surrounding the wine cup, rough interior with a seal on the base. D:7.5cm, H:5.5cm

Provenance: Estate of the late Harry Geoffrey Beasley (1881-1939) a British Anthropologist and curator of Cranmore Ethnographical Museum.

Estimate CA\$300 - CA\$500



269
明晚期 紫檀雕刻酒杯一对
 PAIR OF ZITAN WINE CUPS, LATE MING

A pair of upside-down bell shape supported on straight foot, the exterior with natural wood grain pattern, silver interior with russet inclusions. D:6.4cm, H:3.2cm

Provenance: Estate of the late Harry Geoffrey Beasley (1881-1939) a British anthropologist and curator of Cranmore Ethnographical Museum.

Estimate CA\$300 - CA\$500



270
粉彩蝠“寿”碟《大清雍正年制》款
 FAMILLE ROSE DISH YONGZHENG MARK, REPUBLIC PERIOD

The dish is decorated to the interior with a Shou character surrounded by five bats and a decorative floral band on the golden linseed edge, white glazed on the exterior, base with six-characters Yongzheng marks, with small rim hairline. D:18.5cm, H:3.8cm

Provenance: Estate of the late Harry Geoffrey Beasley (1881-1939) British anthropologist and curator of Cranmore Ethnographical Museum.

Estimate CA\$200 - CA\$400



271
19 世纪 黄釉长颈瓶连座
 YELLOW GLAZED VASE

Of a pear shape body rising to a narrow tubular neck, applied all over with yellow glaze, accompanied with a fitted base. W:6cm, H:14cm

Estimate CA\$300 - CA\$500

TERMS & CONDITIONS

STUNNING ARTS GALLERY AND AUCTION INC AS AGENT

The lots listed in this catalog will be offered by Stunning Arts Gallery and Auction Inc as owner or as agent for consignor(s) subject to the following terms and conditions. By bidding at auction you agree to be bound by these Conditions of Sale.

BEFORE THE AUCTION

Prospective buyers are strongly advised to personally examine any property in which they are interested before the auction takes place. All lots are sold "AS IS" and without recourse and neither Stunning Arts Gallery and Auction Inc nor its consignor(s) makes any warranties or representations, express or implied with respect to such lots. No statement, whether written or oral, and whether made in catalog, or in supplements to the catalog, an advertisement, a bill of sale, a saleroom posting or announcement, the remarks of an auctioneer, or otherwise, shall be deemed to create any warranty, representation or assumption of liability. It is the responsibility of prospective purchasers to inspect or have inspected each lot upon which they wish to bid, relying upon their own advisers, and to bid accordingly.

BIDDING IN THE SALE

Refusal of Admission Stunning Arts Gallery and Auction Inc has the right, at our complete discretion, to refuse admission to the premises or participation in any auction and to reject any bid.

Registration before Bidding

A prospective buyer must complete and sign a registration form and provide identification before bidding. We require bank or other financial references.

Bidding as Principal

To bid in person, the bidder will need to register for and collect a numbered paddle before the auction begins. Proof of identity will be required. Should you be the successful buyer of a lot, please ensure that your paddle can be seen by the auctioneer and that it is your number that is called out. All lots sold will be invoiced to the name and address in which the paddle has been registered and cannot be transferred to other names and addresses. When making a bid, a bidder is accepting personal liability to pay the purchase price, including the buyer's premium, all applicable taxes and all other applicable charges.

Absentee Bids

If the bidder cannot attend the auction, we will be happy to execute written bids on your behalf. Absentee bids in writing must be submitted to Stunning Arts Gallery and Auction Inc at least 24 hours prior to the sale by letter or fax. In the event of identical bids, the earliest received will take precedence.

Reserves

Each lot may be subject to an unpublished reserve which may be changed at any time by agreement between the auctioneer and the consignor.

Auctioneer's Discretion

The auctioneer has the right at his or her absolute and sole discretion to refuse any bid, to advance the bidding in such a manner as he or she may decide, to withdraw any lot, and in the case of error or dispute, and whether during or after the sale, to determine the successful bidder, to continue the bidding, to cancel the sale or to re-offer and resell the item in dispute. If any dispute arises after the sale, our sale record is conclusive.

Successful Bid

The highest bidder acknowledged by the auctioneer will be the purchaser. In the case of a tie bid, the winning bidder will be determined by the auctioneer at his or her sole discretion. In the event of a dispute between bidders, the auctioneer has final discretion to determine the successful bidder or to re-offer the lot in dispute.

AFTER THE SALE

Buyer's Premium

In addition to the hammer price, the buyer agrees to pay Stunning

Arts Gallery and Auction Inc a buyer's premium and the applicable sales tax added to the final total. Each lot sold is subject to a premium of 20% of the successful bid price of each lot up to and including \$50,000 and 18% on any amount in excess of \$50,000 as part of the purchase price. Online bidding is subject to a 23% buyers premium.

Deposit

The contact information provided by the purchase must be accurate and true. The auctioneer reserves the right to request a deposit to be provided before bidding and will be used against any and all purchases made at the auction.

Taxes

Unless exempted by law, the buyer is required to pay HST on the total purchase price including buyer's premium. For international buyers, taxes are not applicable when purchases are shipped out of country. Items shipped out of Ontario, the buyer is required to pay taxes as per the tax status of that province, whether is HST or GST.

Payment

Immediately after the purchase of a lot, the buyer shall pay or undertake to the satisfaction of the auctioneer with respect to payment of the whole or any part of the purchase price requested by the auctioneer, failing which the auctioneer in his sole discretion may cancel the sale, with or without re-offering the item for sale.

The buyer shall pay for all lots within 7 business days from the date of the sale, after which a late charge of 2% per month on the total invoice may be incurred or the auctioneer, in his sole discretion, may cancel the sale. The buyer shall not become the owner of the lot until paid for in full. Items must be removed within 10 days from the date of sale, after which storage charges may be incurred.

Each lot purchased, unless the sale is cancelled as above, shall be held by the auctioneer at his premises or at a public warehouse at the sole risk of the buyer until fully paid for and take away.

Payment for purchases must be by cash, INTERAC direct debit (Canadian clients in person only), certified cheque (U.S. and Overseas not applicable), bank draft, electronic transfer (fee applies), and VISA or MASTER or AMERICAN EXPRESS card.

Should the item not be paid for within the time limit stated, the auctioneer, without limitation of the rights of the consignor and the auctioneer against the buyer, may resell any of the articles affected.

SHIPPING

Shipping is provided at the buyers' expense. Stunning Arts Gallery will provide a list of shippers. The purchased items will be released with the buyers' written consent and until payment has been made in full. Shipping, packing and handling is at the entire risk of the buyer. SAG will have no liability of any loss or damage to such items.

竞投出价表 ABSENTEE/TELEPHONE BIDDING FORM

表格应以墨水笔填写，并电邮、邮寄或传真至本公司

FORMS SHOULD BE COMPLETED IN INK AND EMAILED, MAILED, OR FAXED TO THE AUCTION HOUSE

Name: 名字:				Telephone	Absentee
Phone: 联系电话:		Email: 电子邮件:			
Address: 地址:					
City: 城市:		Province: 省:		Postal Code: 邮编:	
Credit Card Number: 信用卡号码:				Expiry Date: 到期日期:	
Name on Card: 持卡人姓名:				CVV: 卡后三位安全码:	
Billing Address (if different): 账单邮寄地址:					

IMPORTANT 重要事项

Please note that the execution of written and telephone bids is offered as an additional service for no extra charge, and at the bidder's risk. It is undertaken subject to Stunning Arts' other commitments at the time of auction, Stunning Arts, therefore cannot accept liability for failure to place such bids, whether through negligence or otherwise. 请注意书面及电话竞投是免费提供之附加服务，风险由竞投人承担。而该等服务会在本公司于拍卖时其他承诺之限下进行；因此，无论是由于疏忽或其他原因引致，本公司无需就未能做出该竞投承担责任。

DEPOSIT 押金

All absentee bidder and telephone bidder are requested by Stunning Arts to deliver to Stunning Arts a deposit of CAD\$2,000 or such higher amount as may be determined by Stunning Arts, and any financial references, guarantees and/or such other security as Stunning Arts may require in its absolute discretion as security for the bid. 本公司可要求电话竞拍者以及最高单价竞拍者完成预先登记程序及交付本公司 2,000 加币或其他由本公司决定之更大金额的定金及任何财务状况证明，担保或/及其他由本公司可全权酌情决定要求的抵押作为参加本公司竞投的保障。

The contract between the buyer and the seller is concluded on the striking of the auctioneer's hammer, and payment of the purchase price for any lot and any buyer's expenses is due 7 business days after the conclusion of the auction. 买家及卖家之合约于拍卖官击锤时订立，而阁下作为买家必须于拍卖会结束后 7 个工作日支付拍品之买入价及任何买家费用。

NUMBER 编号	DESCRIPTION 名称	MAXIMUM BID 最高竞价
		CAD\$
		CAD\$
		CAD\$
		CAD\$
		CAD\$
		CAD\$
		CAD\$

TELEPHONE NUMBER DURING THE SALE 拍卖联络电话:

FOR WRITTEN/FIXED BIDS 书面竞投

- Bids will be executed for the lowest price as is permitted by other bids or reserves. 竞投将以尽可能低之价格进行
- Where appropriate your written bids will be rounded down to the nearest amount consistent with the auctioneer's bidding increments. 如适当时，阁下之书面竞投价格会被大概调整至最接近拍卖官递增之竞投金额

FOR TELEPHONE BIDS 电话竞投

- Please clearly specify the telephone number on which you may be reached at the time of the sale, including the country code. We will call you from the saleroom shortly before your lot is offered. 请清楚注明于拍卖期间可联络阁下之电话号码，包括国家号码。我们会于阁下之拍品竞投前致电给阁下。

I agree that I am bound by the Condition of Business for Buyer and the Authenticity Guarantee which are published in the catalogue for the sale on purchases at auction that I make. If any bid is successful, I agree that all sales are subjected to a 20% buyer's premium added to the hammer price, 18% on any bids over CAD \$ 50,000. 本人同意接受图册内列明之给卖家的规则及保证书，是次拍卖会上的一切交易均受以上条款所约束。若竞投成功，本人愿意支付附加成交价之上的 20% 买家佣金，或以 50,000 加币以上成交的拍品之 18% 的买家佣金。

I consent to the use of this information and any other information obtained by Stunning Arts Gallery and Auction in accordance with the Guide for Absentee Bidders and Conditions of Business. I am aware that all telephone bid lines may be recorded. 本人同意 Stunning Arts Gallery and Auction 使用本人资料及根据给委托竞投者指引与给买家业务规则内而取得至其他资料。本人明白所有电话竞投会被录音。

SIGNED 签署 _____

DATE 日期 _____

天



天
地
人
三
才



地
人
三
才



良玉比德君子珪
 璋見美詩人晉之
 垂棘魯之璆璠宋
 之結綵楚之和璞
 價越萬金貴重都
 城有稱疇昔流聲
 將來

臣英訢敬書



長城畫廊

Stunning Arts Gallery and Auction Inc.
 Location: 8333 Kennedy Rd., Unit 28-31 (P1)
 Markham ON L3R 1J5
 Phone/Fax: 905-604-8288
 Email: stunningartsgallery@gmail.com
www.stunningartsgallery.com

