



001  
出口粉彩花鸟碟

An 18th Century Famille-rose porcelain dish, of oval form, interior painted with peacock and peony, the underglaze base revealing buff-body, W: 19.7cm L: 14.4cm

\$100 - \$150



002  
青花双耳小瓶《成化年制》款

Circa 1900, A Hu shaped porcelain vase, painted with blossoming lotus branch and ducks, attached handle covered in bronze glaze, four-character Cheng Hua seal mark on the base, H:12cm

\$100 - \$200



003  
民国 粉彩瓶《居仁堂制》款

A famille-rose bottle vase, Republican Period, the baluster form body supported on a spreading foot, surmounted by an elongated neck with a trumpet mouth, painted with chrysanthemum, peony and branches, Juren Tang seal mark on the base, H:25.5cm

\$700 - \$900



004  
民国 粉彩人物碟一对《大清光绪年制》款

A pair of famille-rose dishes, depicting boys and rooster with peony and branches, Republican Period, iron red six-character Guangxu seal mark on the base, Diam: 12.2cm

\$1000 - \$1500



005  
铜制天球瓶

A bronze Tianqiuping vase, of the compressed body, rising to a tall cylindrical neck with everted waisted rim, neck and tapered feet incircled with the carved archaistic pattern, H: 22cm

\$400-\$600



006  
蛾形刺绣香囊

An embroidered sachet with tassels, of moth shape, decorated with two Chinese knots connected to two attached yellow tassels, W: 8.5cm, L: 31cm

\$100-\$150



007  
豇豆红釉赏瓶《大清康熙年制》款

A peachbloom vase, the tapered body surmounted by a short waisted neck and supported by a tapered foot, the exterior applied with peachbloom glazed leaving the unglazed foot revealing the buff-body, six-characters Da Qing Kang Xi seal mark on the base, H: 15cm

\$800-\$1200



008  
粉彩茶杯一套《洪宪年制》款

A set of famille-rose porcelain teacups, one with cover and fitting support, painted with narcissus and Ling Zhi, red four-characters Hong Xian seal marks on the cover and the base, Diam: 8.9cm; three cups without cover, decorated with landscape and beast, Diam: 9.9cm

\$400-\$500



009  
**红釉仿剔红盘《大清乾隆年制》款**

A red-glazed porcelain dish imitating cinnabar lacquer, interior decorated with fret pattern, the exterior decorated with the floral pattern, unglazed base reveal the buff-body, six-characters Da Qing Qian Long seal mark on the base, W: 17.7cm L: 11.5cm

\$300-\$400



011  
**清 玉带扣**

A jade belt buckle, carved and pierced in Ruyi design, W: 8.8cm, L: 3.5cm

\$500-\$600



010  
**玉把镜**

A mirror with jade handle, connected by iron support engraved with Phoenix, reverse side embedded with dragons in pursuit of pearls design, L:22cm, W:9.5cm

\$300-\$400



012  
**清 鸡翅木和榆木柜子**

A Jichimu and Elmwood small cabinet, Early Republican, of rectangular form, with two drawers, the pair of single panel doors with two handles mounted in the centre, 35cm x 59.5cm x 65.5cm

\$800-\$1200



013  
花梨木方凳

A huali and mixed hardwood stool, of the square section in dark brown shades, humpback stretchers joining the hoof feet legs, 46.5 cm x 46.5 cm x 51.5 cm

\$400-\$600

013



014  
红木方凳 (带藤座)

A Rosewood square form stool, of square top centered with rattan mat panels, waist brackets demonstrating mortise and tenon work, 52 cm x 52 cm x 47 cm

\$300-\$400

014



015  
樟木大箱一對

A pair of large camphorwood storage chests, each of rectangular form, the paneled cover and chest joined by brass hinges and a circular lockplate with a ruyi-form hasp, with bail handles set to either side, one box with one missing handle, 61.8 cm x 93 cm x 42 cm

\$500-\$700

015



016  
老紅木長凳 (带藤座)

A rosewood long bench, the single panel top set within a rectangular frame centered with rattan mat panels, above a narrow thumb-grooved waist and plain apron, the legs of square section joined by humpback stretchers and terminating in hoof feet, 106 cm x 34 cm x 50 cm

\$300-\$400

017  
四抽矮案

A stained Elmwood side table, the top panels rounded and continuing to the sides enclosing a row of four short drawers, with brass bat shaped pulls, 33.5cm x 41cm x 53cm

\$400-\$600





018  
老紅木南官椅

A rosewood high backed armchair, the top rails rounded and shaped above a curved vertical splat. The arms support to the rectangular seats. All resting on plain legs below a shaped apron, the feet united by stretchers, 46cm x 60.5cm x 111.5cm

\$600-\$800



019  
藤座老紅木靠背椅

A small guanmao huaili chair, the shaped crest rail is supported on a plain s-curved backplate and curved rear posts which continue through the seat to form the rear legs, the rectangular seat frame encloses a mat seat, above the plain aprons and rounded curved aprons and straight spandrels. The legs are of round section joined by stepped stretchers at the side and footrest at the front, 48 cm x 39 cm x 91 cm

\$300-\$400



020  
榆木大衣架

This unique clothing rack would make a stunning display of towels in the master bath or even as a room divider, 163cm x 175cm

\$600-\$800



021  
花梨套几

A three-tiered huaili nesting stands, each with a square top with pierced geometric frieze on sides, four slim legs joined by feet stretchers, 17.5 cm x 17.5 cm x 35.2 cm

\$200-\$300



022  
硬木竹形套几

Two hardwood nesting stands, each with a square top, joining by bamboo like feet, 21.5 cm x 22 cm x 22 cm

\$200-\$400



023  
碧玉山子

A green jade mountain, accompanied with a fitted wood stand, H: 8.5 cm without a stand

\$200-\$300

024  
賞石

A mottled grey and black scholar's stone, L: 24.5 cm, weight 4818 grams

\$400-\$600



025  
女媧遺石

A yellow wax stone scholar's rock, covered with crevices, ridges and jagged protrusions, the side incised with nu wa bu shi, L: 32 cm, weight 6402 grams

\$500-\$700





026  
清 时辰 / 八卦纹玉佩

A jade pendant of rectangular form, with hour and eight trigrams pattern on each side, carved child figure in the center, along with a red rope, W: 6.2cm L: 9.5cm

\$2000-\$4000



027  
清 玛瑙鼻烟壶

A caramel agate snuff bottle with russet and black inclusions of square form, H: 6.5cm

\$300-\$400



028  
清 绿釉蟾蜍水盂

A Qing dynasty green glazed water pot of toad shape, H: 11cm

\$300-\$500



029  
玛瑙鼻烟壶两件

A cream and caramel agate snuff bottle of tapered form, carved with fox, butterfly, and bat, H:6.5cm; A caramel translucent agate snuff bottle of rectangular form, carved with symbolic illustrations, H: 7.5cm

\$200-\$300



030  
**十九世纪 漆器圆形食盒一對**

A pair of red and gilt lacquer boxes, each of circular section, the cover decorated with the gilt drawing of Hehe Erxian in garden scene enclosed within an archaistic band, around the 19th century, D: 40.7 cm

\$700-\$900



031  
**十八/十九世纪 油画三件**

Three large export landscape paintings, around 18th/19th century, oil on the paper frame, image area: 126 cm x 30 cm

\$800-\$1200



032  
**银镶嵌宝石藏刀**

A knife with beautiful appearance, with a delicately made silver scabbards, decorated with coral and green stone inlaid, L: 46 cm.

\$400-\$600



033  
**西藏四翼金刚法器**

This Tibetan Buddhism Meditation Object has five spokes that close in each end in lotus shape, the 'handle' in the middle is dome-shaped, and engraved with leafy tendrils and dotted surfaces, L: 23 cm.

\$500-\$700





034  
硬木大画筒

A large hardwood scroll holder of cylindrical form, H:26cm, Diam: 27.3cm  
\$800-\$1200



035  
清末 四方小砚带盒

A late Qing ink stone, in rectangular form, supported by four short corner feet, accompanied with a fitted wood cover, L:11cm, W:7.5cm, H:2cm  
\$50-\$200



036  
玉勒子

A jade tubular bead, of cylindrical form, carved around the exterior by a band of grain motifs, the stone of a deep brown color with some dark veining, H: 4 cm, D: 1.3 cm  
\$300-\$500



037  
红釉宜兴赏瓶

A 19th-century red glazed porcelain vase, of compressed globular form rising to a waisted neck, underglazed feet and base revealing buff-body, H:16cm  
\$400-\$600



038  
十九世纪 豇豆红苹果尊

A 19th-century peach bloom glazed brush washer, of apple form rising to an inverted mouth, rounded sides covered with a dusty purplish-pink glaze with other half areas of mushroom-green tones, underglazed foot-ring revealing the buff-body, Diam: 8.5cm, H: 7cm  
\$400-\$600



039  
粉彩花束纹盘

A 19th Century famille-rose porcelain plate, interior decorated with a bouquet of peony, begonia, and daisy, Diam:18cm  
\$800-\$1200



040  
**十八世纪 出口 粉彩酒杯九件**

Nine 18th or 19th-century famille-rose wine cups, with petal rim, some exterior decorated with floral and animal design, some painted with human figures and landscape, H: 5.7cm Diam: 8.2cm

\$150-\$250



041  
**珐琅茶具五件**

A set of five 19th/20th century enamel wares, including 3 cups and 2 dishes, the exterior decorated with flowers, birds, and beasts, Diam: 8.5cm

\$100-\$200



042  
**粉彩花蝶纹圆罐《雍正年制》款**

A famille-rose vase, a globular body connecting to the base with a round foot, surmounted by a waisted neck with a trumpet mouth, exterior painted with flower and butterfly, four-character Yong Zheng seal mark on the base, H: 13cm

\$300-\$400



043  
**粉彩花纹杯《雍正年制》款**

A famille-rose porcelain wine cup, the exterior decorated with floral design, four-character Yongzheng seal mark at the bottom, H: 5.3cm Diam: 9cm

\$200-\$400



044  
**宜兴紫砂茶具一组**

A set of Zisha Teapot and six cups, of a compressed globular body with a curved handle and long spout, bottom with four-character seal mark, H: 6cm

\$100-\$200



045  
**蓝釉钵**

A 19th-century porcelain alms bowl, with an incurved rim, exterior body in lapis blue glaze, underglazed bottom revealing the buff-body, Diam: 21cm H: 10.3cm

\$300-\$500



046  
新石器时代 陶土罐三件

Three Neolithic pottery vessels, made of red pottery, of a compressed body, flanked by a pair/ single handle, painted on the exterior in brown symmetrical geometric design, H: 15.5 cm

\$600-\$800



047  
唐代 黄釉罐

A yellow glazed jar, Tang dynasty, of an ovoid body with half body unglazed, revealing the buff-body, H: 17cm

\$500-\$700



048  
晚清 花梨木书卷式炕几

A late Qing dynasty rosewood stand, with a rectangular top curving down at each end to form scrolled support, W: 50cm L:27.5cm H:10.5cm

\$1000-\$1500



049  
青花大碗一組

Two blue and white bowls, each potted of rounded sides rising from a short foot, painted with floral design, Ming Dynasty, Diam: 20 cm

\$500-\$700



050  
青花小碗一組

Four blue and white porcelain bowls, Ming dynasty, one pair with interlaced floral design to the exterior, another pair of bowls painted with beasts design, Diam: 14 cm

\$500-\$700



051  
釉下彩水仙盆 / 粉彩小茶壺

A green underglazed narcissus basin of rectangular section supported on four angled feet, rising onwards to a flat rim, each side decorated with plants pattern sprays on celadon glazed ground W: 24.5cm H: 9cm; A famille-rose teapot of globular body with an upright side spout decorated with human figure and animal pattern, the base with four-character and red standing seal mark, H: 10.5 cm

\$200-\$400



052

**052  
两个刺绣眼镜袋**

Two silk embroidery glass cases featuring bamboo, malus spectabilis, orchids, peony and calligraphy, 13 cm x 6 cm

\$200-\$300



053

**053  
银制鹰爪项链**

A silver necklace along with hard stones, 19th Century, eagle claw accompanied with animal figures in the middle, approx length 90 cm

\$400-\$600



054

**054  
孔雀石玉挂件一组**

Three turquoise and jade pendants, late Qing dynasty, of sphere body carved in low relief of dragons reserved on a turquoise ground, along with white jade carving, one of white jade with brown inclusions, approx length: 14 cm

\$400-\$600



055

**055  
二十世纪初 长命百岁锁 / 刺绣手袋**

A silver longevial lock necklace, flanked by ruyi-form hooks that hold the lock-form pendant, centered with four characters reading zhand ming bai sui (longevity), the reverse decorated with figures, all along with bell shape objects and amber tone stones, early 20th century

\$400-\$600



056

**056  
核桃一对**

Two pieces of wood carved exercise walnuts, of organic form and color, H: 4.5 cm

\$200-\$300



057

**057  
十九世纪 仕女手链和耳环一组**

A pair of silver bracelets, of four separate bone panels inlaid with lady figures images, L: 18 cm; two pairs of earrings, of rectangular section, the center inlaid with ladies and birds images, L: 1.9 cm, and a silver brooch, L: 3.1 cm

\$300-\$500



058  
青花冰梅大碗《康熙年制》款

A large blue and white bowl, 19th century, exterior and interior decorated with interlaced prunus and hawthorn pattern, four-character Kangxi seal mark on the base, cracks, Diam: 25.5 cm, H: 9.5 cm

\$300-\$500



059  
綠釉小扁瓶

A green glazed porcelain moonflask with flower reliefs, of flattened body with flared mouth, flanked with two small handles, supported on a short foot rim, unglazed at the base, H:16 cm, Diam: 10 cm

\$200-\$300



060  
战国 黑釉陶罐

A grey glazed earthenware jar, warring state period, of the compressed globular body, rising to a short neck, body curved with geometrical patterns, accompanied with two attached handle, underglazed bottom revealing the buff-body, H: 8 cm, Diam: 19 cm

\$600-\$800



061  
清 河南窑黑釉执壶

A Qing dynasty Henan black glazed wine ewer, exterior with large brown splashes on the lustrous black ground glaze, the glaze falling short of the splayed ring foot, H: 21.8cm

\$400-\$600



062  
十九世紀 牛血红釉三足爐帶底座

A 19th-century red glazed porcelain censor, of cylindrical shape with two tie-bow rings, supported on three tapered feet, underglazed bottom revealing the buff-body, accompanied with a wooden stand, H:10.5cm

\$400-\$600



063  
酱色描金开光人物大茶壶一对 清

A pair of the large export teapots, body covered in brown glaze, center decorated with blue and white decoration on each side, depicting figures and landscape, cover decorated with floral design, attached with a curve handle and long spout, H: 18.5 cm

\$800-\$1200



064  
清 花梨木方几

A rectangular wooden stand with a square top panel, with geometric pattern openwork panel beneath, 49.5cm x 49.5cm x 75.5cm

\$1000-\$1500



065  
清 硬木炕桌

A low wood table, of two floating boards, set flush into the rectangular frame of standard mitered, mortise and tenon construction, the molded edge tapering to a beaded lower edge over a short recessed waist, 44 cm x 75 cm x 3 cm

\$300-\$400

066  
清 老红木顶箱柜

Constructed with a top cabinet and a lower and larger cabinet supported on four legs, the top, and lower cabinet both with a pair of hinged doors and the metal plate with suspending door pulls, with two drawers and whole cabinet divided into six sections, 48.5cm x 98.5cm x 197.5cm

\$2000-\$3000





067  
清 硬木大柜带锁

A rectangular form wooden cabinet, supported by four square feet, with two drawers and a big section beneath, decorated with a tripartite metal plate with a lock receptacle and suspending reticulated door pulls, accompanied with a lock, 96.5cm x 48.5cm x 86.5cm

\$1500-\$2000



068  
清 带锁红木主柜

A rectangular elmwood cabinet, supporting by four square feet, attached with two single panel door, the metal panel with a lock, cabinet divided into three levels of shelves, 85.5cm x 43.5cm x 171cm

\$1000-\$1500



069  
青瓷双耳罐

A celadon jar, of globular body with upright mouth rim, set on the shoulder with a pair of loop handles, applied with olive green glaze, the base burnt russet in the firing, Diam: 8.5 cm, H: 10 cm

\$800-\$1000

070  
青瓷执壶

A white glazed ewer, of the ovoid body, connecting to a garlic-shaped mouth, the unglazed base burnt reddish brown in the firing, H: 15 cm

\$300-\$500



071  
镀金铜西藏金刚手菩萨

An 18th century gilt bronze figure, depicting the Tibet Vajrapani stepping on a carved figure facing down the lotus stand, H: 9.8 cm

\$3000-\$4000







072  
镀金铜西藏金刚手菩萨

An 18th-century gilt bronze figure, depicting the Tibet Vajrapani standing on the Lotus stand, H: 7.5cm

\$2000-\$3000



073  
十七/十八世纪 唐卡  
六臂白玛哈嘎啦

Six-armed White Mahakala is one of the most famous forms of Mahakala and well known for his power to grant wishes and support the comfort and economic well-being of tantric practitioners, 46 cm x 67 cm

\$3000-\$5000



074  
**朱梦庐 (1826-1900) 花鸟 设色纸本 镜心**

Bird and flower, signed by Zhu Meng Lu with one seal mark of the artist, ink and color on paper 53x30.5cm

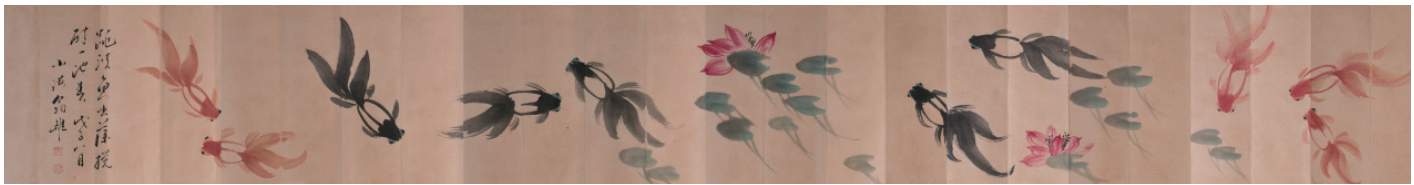
\$500-\$800



075  
**清末 楼阁仕女 设色绢本 立轴**

Painting of female figure in pavilion scene, with two seal marks of the artist, color on silk, hanging scroll

\$500-\$800



076  
**翁雒 (1790-1849) 金鱼册页 设色纸本**

Album painted by Weng Luo, in and color on paper depicting goldfish and lotus, signed with two seals of the artist 28cm x 243cm x 2cm

\$300-\$400



077  
**溥心畲 (1896-1963) 款 骑驴过桥 设色纸本 立轴**

Figure and waterfall, signed with two artist's seal marks, ink and color on paper, hanging scroll, 113 cm x 39.5 cm

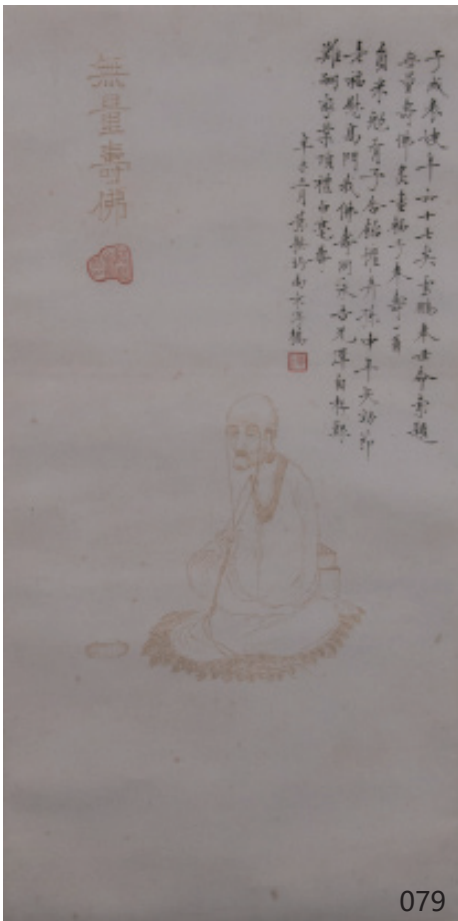
\$200-\$300



078  
**清 唐卡**

Hanging Thangka depicting buddha ridding on an elephant, 41cm x 66cm

\$300-\$500

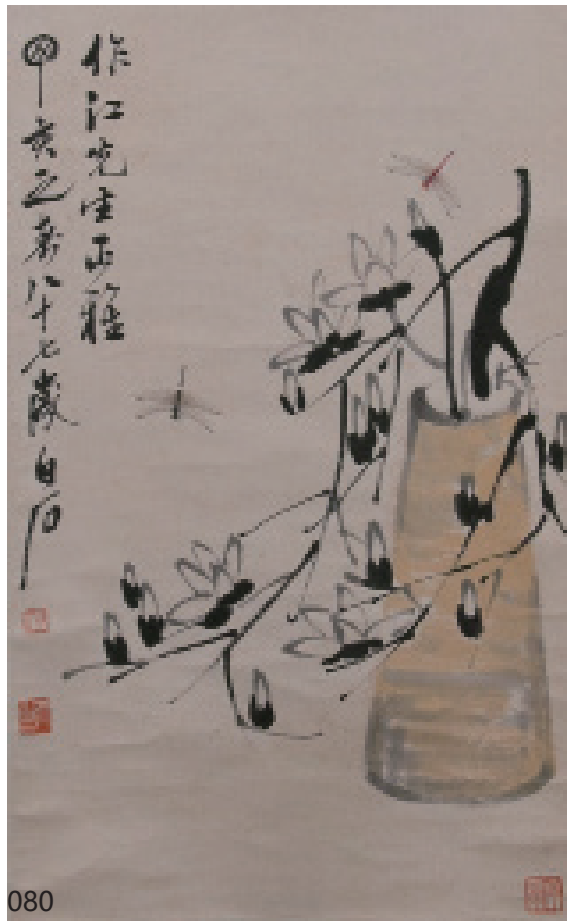


079

079  
陆桂山 (1866-1941)  
烫画孙揆均题款 罗汉  
像 立轴

Luohan and calligraphy,  
with two artist's seal  
marks, hanging scroll,  
31.4cm x 59.5cm

\$200-\$300



080

080  
齐白石 (1864-1957) 款  
花鸟工虫 立轴

Dragonflies and Florals and  
calligraphy, with three artist's  
seal marks, hanging scroll, 69cm  
x 43cm

\$300-\$500



081

081  
郑珊 (1810-1897) 人物  
立轴

Drunken Man and calligraphy,  
with two artist's seal marks,  
hanging scroll, 66cm x 31 cm

\$400-\$600

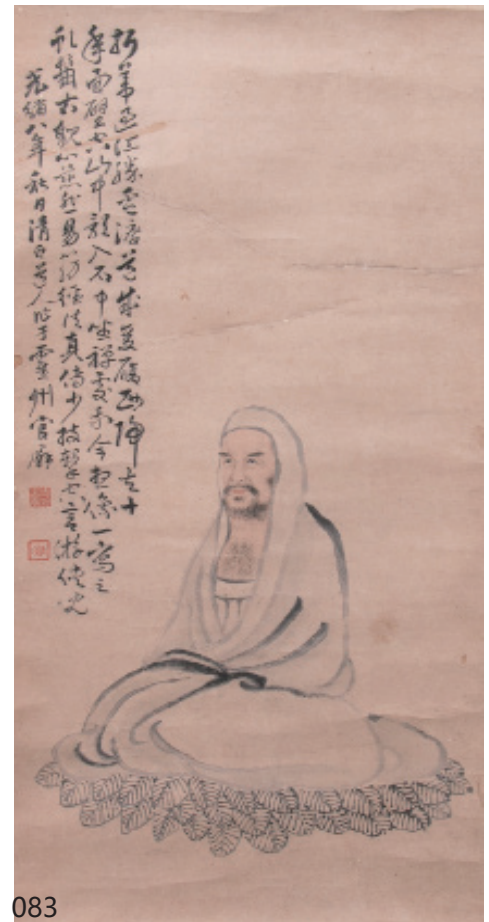


082

082  
王云 (1887-1938)  
大雁 立轴

Geese and calligraphy,  
with two artist's seal  
marks, hanging scroll,  
133cm x 132cm

\$400-\$600

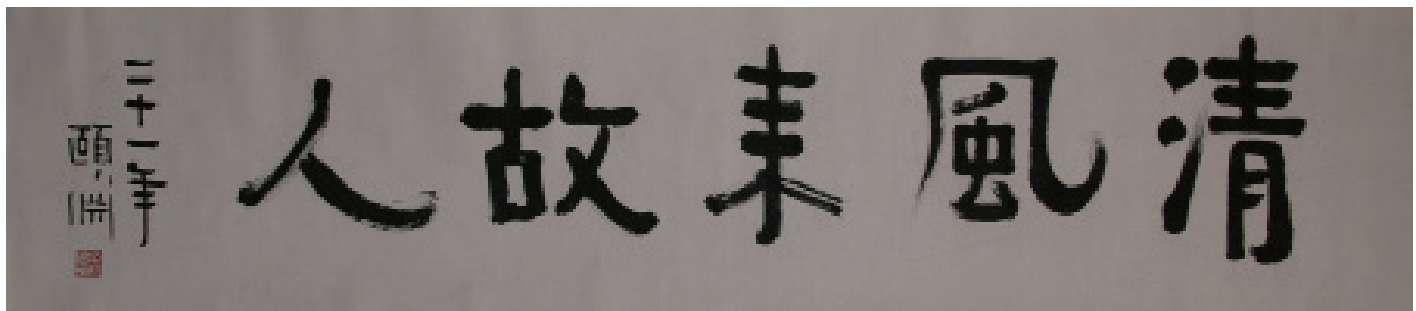


083

083  
周济 (1781-1839) 罗汉 立  
轴

Monk and calligraphy, with two  
artist's seal marks, hanging  
scroll, 72cm x 35.5cm

\$400-\$600



084  
**经颐渊 (1877-1938) 书法 水墨纸本 横轴**

Calligraphy, signed and dated by Yiyuan, with one artist seal mark, ink on paper, hanging scroll, 130 cm x 31 cm

\$200-\$300

085  
**明 神像图 设色纸本 立轴**

Ming God's Painting, ink and color on paper, hanging scroll, 115cm x 54.5

\$600-\$800



086  
**青花龙纹笔筒**

A blue and white porcelain brush pot, of cylindrical form, exterior painted with two dragons in pursuit of pearls, unglazed bottom reveals the buff-body, Diam: 16cm H: 14.5cm

\$200-\$400



087  
**囍字青花罐**

A blue and white porcelain jar, of a globular body, painted with double happiness emblems amongst interlaced floral design, the body with red Jianding seal mark, H:19.5cm

\$200-\$400





088

**088  
三彩侍者像一对**

A pair of Sancai glazed attendants, both dressed in long robes, standing steady with hands over-lapped in front of chest, underglazed cap and base revealing the buff-body, accompanied with two fitted wooden stands, H: 27.5cm

\$600-\$800



089

**089  
镀金观音坐像**

A gilt lacquered figure of Guanyin, Ming dynasty portraying Avalokitesvara seated and dressed in pooling robes pulled up around his crossed legs, holding a begging bowl in one hand and a Padma stem in the other, his high pierced lotus crown cast with a smaller figure of Amitabha, H: 17.5cm

\$2000-\$4000

**090  
乾隆 出口粉彩人物图纹瓶一对**

A pair of export famille-rose bottle vases, Qianlong Period, of the tapered body, rising to a cylindrical mouth, decorated with the human figure, landscape, and floral design, H: 18.5cm

\$1000-\$1500



090



91  
民国 粉彩竹鸟碗《大清光绪年制》款

A republican period famille-rose porcelain shallow bowl, exterior painted with birds and bamboo, base with iron red six-characters Guangxu seal mark, Diam: 13 cm

\$400-\$600

92  
汉代 橄榄釉壶瓶

An olive glazed vase, Han dynasty, of the globular body rising to a waisted neck, supported on a cylindrical base, rounded sides depicting animals and beasts, underglazed bottom revealing the buff-body, H: 20 cm

\$600-\$800



93  
宋 酱色釉缸

A brown glazed pottery jar, of globular body with two small beast face ear handles, the base is unglazed revealing buff body, H: 14 cm, Diam: 14.5cm

\$300-\$500





094  
建窑小盏

A small Jian ware bowl, of deep rounded sides rising from a short straight foot-ring to a lipped rim, covered overall in black glaze falling short of the foot to reveal the buff-body, H: 6 cm, Diam: 11.5 cm

\$300-\$500



095  
葵花粉彩大碗

A famille-rose porcelain bowl of quatre-lobed form, the exterior decorated with chrysanthemum, stone and birds, turquoise green glazed interior, the base with four-character and red Jianding seal mark, minor chips to ring. Diam: 23cm H: 9cm

\$100-\$200



096  
粉彩碗碟

Each enamelled on the exterior with flowers and branches; hand-stamped "lin" character and red Chinese knot cell mark at the base of the bowl, hand-stamped "shu" character in the center interior along with an orchid, the body with red Jianding seal mark, Bowl: Diam: 16.5cm H: 6.5cm; Plate: Diam: 18.5cm

\$200-\$400



097  
粉彩碟 / 青花釉里红碟

Late Qing Famille-rose porcelain plate, interior decorated with peony and branches, red mark at the base, 20.5cm diam; Late Qing plate with interior decorated with fish in underglazed blue and red, the unglazed base reveals the buff-body, the base with red Jianding seal mark, Diam: 21cm.

\$200-\$400



098  
同治 黄甫，马元德，祁兆熙 水墨绢本 圆光

Landscape and calligraphy, signed Ma Yuande with one artist's seal; signed Huang Fu with one artist's seal; signed Qi Zhaoxi, ink on gold fan paper, Diam: 24.6cm

\$400-\$600



099  
光绪 张梦查 设色绢本 圆光

Wild goose and calligraphy, signed Mengcha with two artist's seal, ink and color on silk, Diam: 28.3cm

\$400-\$600



100  
光绪 邓启昌，俞越 设色绢本 圆光

Chrysanthemum and branches, signed Deng Qichang with one artist's seal, ink on silk, Diam: 25cm; Calligraphy, signed Yu Yue with one artist's seal, ink on gold fan paper, Diam: 24.5cm

\$400-\$600



101  
光绪 吴陵，晏端 水墨绢本 圆光

Landscape and scholar's stone, signed Wu Ling with one artist's seal, ink on silk, Diam: 27.8; Calligraphy, signed Yan Duan with two artist's seals, ink on silk, Diam: 25.5cm

\$400-\$600







102  
**光绪 李丹 设色绢本 圆光**

Cicada on branch, with artist's seal mark, ink and color on silk, Diam: 24.6cm

\$300-\$400



103  
**光绪 松小梦 水墨绢本 圆光**

Bird on branch, signed Song Xiaomeng with one artist's seal, ink on silk, Diam: 25.2cm

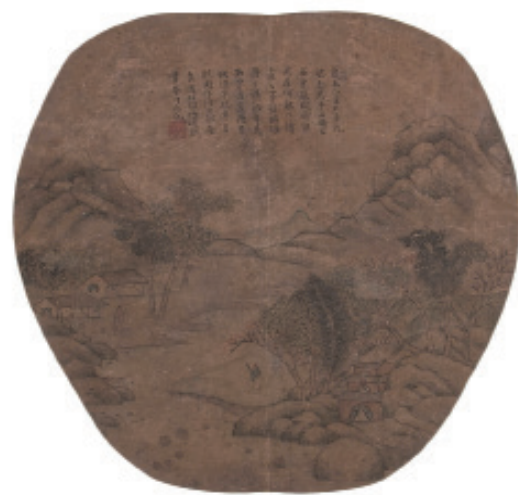
\$300-\$400



104  
**光绪 吴颺 设色绢本 圆光**

Landscape, signed by Wu Yang with two artist's seals, ink and color on silk, Diam: 25cm

\$400-\$600



105  
**光绪 宋研畊 设色绢本 圆光**

Landscape and human figure, with one artist's seal mark, ink and color on silk, Diam: 25.1cm

\$400-\$600



106  
十八 / 十九世纪 粉彩关公像

A porcelain figure, depicting Guan Gong reading a book, sitting on a chair covered by tiger skin, unglazed base reveal the buffbody, H: 38cm

\$3000-\$4000



107  
十九世纪 素三彩花鸟笔筒

A famille -verte brush pot of cylindrical form, painted with peony on leafy branch with insects and bird, inscribed and titled by the artist with painted red seal mark, unglazed base reveals the buffbody, Diam: 10cm, H: 12cm

\$500-\$800



108  
粉彩万寿碗《大清光绪年制》款

A famille rose bowl, the side decorated with Wan Shou Wu Jiang and interlaced floral design, the base with six-character Da Qing Guang Xu seal mark, Diam: 20.5cm H: 9.5cm

\$100-\$200



109  
明 青铜器

A bronze mirror with handle, along with a stand, engraved with clouds pattern, L: 30 cm

\$100-\$200



110  
小铜瓶

A small bronze vase, of rectangular baluster form, supported by four-legs base, body carved with landscape on each side, H: 10.5cm

\$300-\$500



111  
玉石镶嵌漆雕挂屏一对

A pair of hanging cinnabar lacquer panels, inlaid with jade stones, depicting goats, dogs, pine, willow and scholar's stone, mid 20th century, 90cm x 39cm

\$800-\$1200



112  
"国香服媚" 博古纹百宝嵌挂屏

A mid 20th century panel enamelled with jade and cloisonne, depicting a censor, a vase, a lucky buckle, and three scholar's stones, 75.5cm x 54.5cm

\$600-\$800



113  
十九/二十世纪 缂  
絲画掛屏一對

A pair of silk kesi panels featuring '100 Antique' motif, around 19th/20th century, 67 cm x 27 cm

\$300-\$500



114  
十九世纪 漆器山水長方食盒

A large black, red and gilt lacquer 'landscape' rectangular box, 19th century, 61 cm x 34 cm x 15 cm

\$700-\$900

115  
二十世纪早期 漆器人物花鸟長方食盒

A red and black lacquer rectangular box painted with figures and flowers, 43cm x 21.5cm x 18.5cm

\$400-\$600





116  
胭脂紅小碟 洪憲年制款

A small porcelain dish, of shallow rounded sides, covered overall with a pink glaze, the white-glazed base with a four-character Hongxian mark in iron red, Diam: 10 cm

\$300-\$500



117  
窑变釉铜锣洗 十九世纪

A flambe glazed brush washer, of low rounded sides, incurved at the mouth and supported on a low tapered foot, overall covered in a purple and lilac glaze, Diam: 12.5 cm

\$500-\$700



118  
粉彩人物小茶壶

An export mandarin rose porcelain creamer, painted with figures and flowering plants, H: 10.5 cm

\$100-\$150

119  
宋 褐釉乳钉柳斗纹量罐

A Gangzhouyao measuring jar, of globular body standing on a flat base and with combed decoration on the unglazed brown body, rising to the wide neck with horizontal combed bands enclosing a bank of thick cream glaze spots, applied on the exterior and over lipped rim in a persimmon glaze, accompanied with a wood stand and a box, Diam: 10 cm

\$1500-\$2500





120

**十八/十九世纪 珍珠母贝漆饰酒杯四件**

A set of four lacquer and mother-of-pearl wine cups, each of square section supported on a short tapered foot, decorated to the exterior with figures and landscape scenes, D: 5.5 cm, H: 4.2 cm

\$600-\$800



121

**十八/十九世纪 粉彩盘一对**

A pair of export mandarin rose plates, of fluted sides rising to a flat bracket-lobed rim, painted in the center with figures in courtyard scene, all within floral outer border along the rim, D: 22.5 cm

\$300-\$400



122

**粉彩人物像对 带底座**

A pair of export famille rose models of boys, depicting two seated boys, each wearing colorful robes and with a circular aperture on the top, unglazed base reveals the buff-body, accompanied with fitted wood stands, H: 16.5 cm

\$300-\$500



123

**十八世纪 八角青花小碟**

A blue and white miniature hexagonal dish, the exterior painted with figures, flowers and landscape scenes, gilt on the rim and unglazed base, Diam:11.5 cm

\$100-\$150



124  
青白玉锭带灯头一对

A set of pale celadon jade ingot along with two lamp finials, 19th/20th century, 9.5 cm x 4.5 cm x 4 cm

\$500-\$700



125  
青白玉刘海戏金蝉把件

A 19th Century pale celadon jade figure, depicting the story of Liu Hai plays with golden toad, the stone of celadon tone with russet inclusions, L: 6cm

\$800-\$1200



126 青白玉首饰盒带盖

An 18th/19th-century cosmetic box and cover, the translucent pale celadon jade body of the compressed form, Diam:5.5cm

\$400-\$600



127  
青白玉挂件

A jade hanging pendant, 19th century, of tubular body, the stone of white tone with russet inclusions, height 7 cm

\$400-\$600



128  
青白玉印泥盒带盖

A 19th-century jade seal-ink covered box, pale celadon jade finely carved in circular, the cover with a subtle round dom, the fitted box with a short inner lop and a circular foot trim, Diam: 6cm

\$400-\$600



129  
清 酱釉小罐一对

A pair of pottery jars with covers, of ovoid form, applied overall with a brown glaze, leaving the interior unglazed to reveal pale buff pottery body, two Chinese characters in the inner lid, H: 11.5 cm

\$300-\$500



130  
元代 磁州窑四系瓶

A Cizhou wine container, of ovoid body surmounted by a short flaring mouth, the neck set with four handles, inscribed with Ren He Guan to the exterior, applied creamy-white glaze on top and dark brown glaze on the bottom part, unglazed base reveals the buff-body, H: 25.5 cm

\$1500-\$2500



131  
硬木香炉大底座

A large hard wood center stand, of circular section with openwork carvings, D: 31 cm

\$400-\$600

132  
灰陶土茧形罐

A large cocoon jar, well potted of oval form rising to an everted rim and supported on a flared foot, with a burnished grey glaze throughout, the body encircled by double concentric grooves, H: 37 cm

\$2000-\$4000





133  
磁州窑童子瓷枕一对

A pair of Cizhou porcelain pillows, in form of kneeling boys, overall covered in crackled white glaze, H: 20 cm, W: 35 cm

\$300-\$500



134  
清末 出口 通草画一对

A pair of export pith paper painting, each similarly painted with flowers in vase and fruits in plate all together on a marble table, with frames, around the 19th century, image size 14.5 cm x 21.7 cm

\$100-\$200



135  
十九世纪 老红木嵌大理石插屏 (有残)

A large Dali marble panel and stand, a larger Spanish green marble accented with light brown and creamy-white veins on top, and another smaller white with grey inclusion marble inlaid on the bottom, all together mounted in a hongmu frame further supported on a carved wood stand, with missing pieces, 61 cm x 71 cm

\$1000-\$1500



136  
晚清 花梨木小柜

A late Qing dynasty Huali table cabinet, the pair of single panel doors enclosed the eight drawers within, with plates in the middle, pulls and pin, 34.5cm x 35.5cm x 24cm

\$600-\$800





137  
晚清 花鸟瓷版画挂屏

A pair of framed famille rose porcelain plaques, each of rectangular section, one painted with magpie perching on prunus blossom, another painted with egret beside blossoming lotus and stock, all in an attractive soft palette, image area 21 cm x 13.5 cm

\$400-\$600



138  
玉雕犀牛带底座

A Chinese jade carved rhinoceros in a standing position, accompanied with a fitted wood stand and a box, 11 cm x 23 cm x 7 cm

\$800-\$1200



139  
金焕基 (1913-1974) 款 油画

An oil painting, untitled, signed whanki lower middle, oil on canvas, 37cm x 44.5 cm without frame

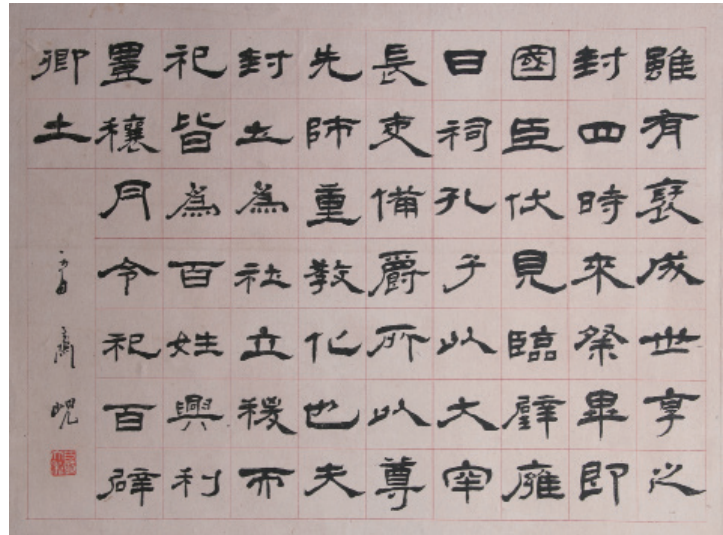
\$3000-\$5000

金焕基是韩国第一位抽象艺术家，于1913年出生于韩国。1960年年初移居美国纽约，成为重要的亚洲艺术家，并于1974年逝世。50年代前，金焕基的作品主要呈现韩国的传统情操，移居纽约后，便开始用线条和圆点发展他独特的抽象艺术风格。



140  
油画两幅

Two oil paintings, 30 cm x 23 cm without frame  
\$200-\$300



141  
书法 水墨纸本 镜心

Calligraphy, signed, 32.5cm x 24cm  
\$300-\$400



142  
成扇

Grapes, lotus root, and fruit, signed with one artist's seal mark, ink and color on the fan; on reserve with calligraphy, signed by Bai Jiao, with two artist's seal marks, ink on fan  
\$500-\$1000

143  
建国时期 李方膺墨竹册 木板水印

Album leaf of ink bamboo, woodblock printing, 49 cm x 31.5 cm  
\$800-\$1200





144

**齐良己 (1923-1988) 蜜蜂 设色纸本 立轴**

Bee and flowers, signed Qi Liang Ji, with one artist's seal mark, ink and colour on paper, hanging scroll, 72.5 cm x 30.2 cm

\$1500-\$2000



145

**圆光 仕女**

Lady figure, signed, with two artist's seal marks, ink and colour on paper, Diam: 28.2 cm

\$300-\$500



146

**黄君璧 (1898 - 1991) 云山晓色 设色纸本 立轴**

Landscape and clouds, with three artist's seal marks, ink and colour on paper, hanging scroll, 40cm x 63 cm

\$20,000-\$30,000

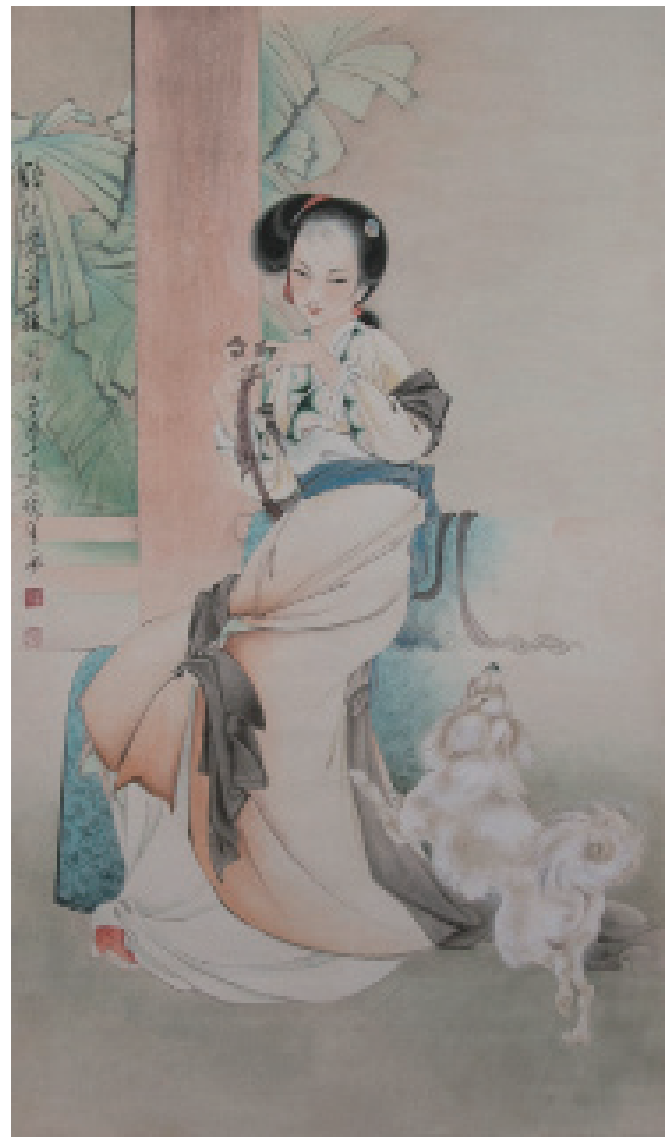
黄君璧 (1898年11月12日 - 1991年10月29日)，原名允瑄，本名韞之，号君璧，广东南海禄舟人，曾从李瑶屏学国画。黄君璧是二十世纪中华民族享有国际声誉的杰出美术家，美术教育家。在海峡两岸及海内外都具有崇高的声望和深远的历史影响力。在大陆时期，黄君璧与黄宾虹、张大千、徐悲鸿等20世纪最杰出的美术家共同创造了20世纪上半叶的辉煌。1949年赴台湾后，黄君璧与张大千、溥心畲一起被尊为‘渡海三家’，是台湾当年具有巨大国际影响力的艺术大师群体的中坚人物。黄君璧于1898年出生于广州市，喜爱收藏古玩字画，父亲仰荀公对其一生影响甚大。1950年之前的三十多年为黄君璧的“初学时期”。在此期间，他游历全国大小名山大川，广结艺文名流，学习鉴赏，临摹名迹。黄君璧先生的艺术以山水最为擅长，尤以画云水瀑布为世所称道。同时兼擅人物、花鸟。他具有深厚的传统功底，既有北派山水的雄强，也不乏南派山水的典雅。他和他的时代一同经历了中国画的继承、演变和革新的过程。在这个过程中，黄君璧先生始终保持着守护传统、以不变应万变的艺术个性，成为20世纪中国传统绘画的有力捍卫者。



147  
**叶绿野 (1922 - ) 小狗 设色纸本 立轴**

Puppies and pumpkin root, color on paper, with one artist's seal mark, hanging scroll, 66 cm x 66.5 cm

\$1000-\$2000



148  
**刘悦笙 (1941-2007) 暗捻装带结同心 设色纸本 立轴**

Female figure with dog, ink and color on paper, signed Yue Sheng with two artist's seals, hanging scroll, 114.5 cm x 66 cm

\$2000-\$3000



149  
**王小松 (民国) 猫戏图 设色纸本 镜心**

Cat and butterflies, signed, with one artist's seal mark, ink and colour on paper

\$1000-\$2000



150  
**胡铁梅 (1848-1899) 梅花 设色纸本 立轴**

Plum blossom, with two artist's seal marks, ink and colour on paper, hanging scroll, 44 cm x 23 cm

\$2000-\$3000



151  
**丁衍庸 (1902-1978) 竹鸡 水墨纸本 立轴**

Bamboo and Chicken, one seal mark of the artist, ink on paper, hanging scroll, 34cm x 45.5cm

\$1000-\$1500

152  
**丁衍庸 (1902-1978) 齐天大圣 设色纸本 镜心**

上款人为香港知名画家郑嵩，曾与司徒奇，陈秋言，邱炳良，何百里等共组画会

The Monkey King fighting a demon, with one artist's seal, ink and colour on paper, 82.5cm x 30.5cm without frame

\$5000-\$8000





153  
双耳小铜炉 宣德款

A small bronze censor, of compressed globular body flanked by a pair of handles, with a cover, 2-characters Xuan De seal mark on the base, accompanied with fitted round wood support, H: 4.8cm

\$1000-\$1500



154  
明 铜鎏金韋馱像

A gilt bronze figure of Wei Tuo, the guardian of Buddhist teaching, dressed as a warrior, standing with feet astride on a stand, the face with a stern expression, one hand is holding a tower, H: 26.5 cm.

\$2500-\$3500



155  
清 阿弥陀佛铜佛像

The figure seated above a double lotus plinth in dhyanasana with both hands folded at the front, wearing a dhoti and a draped shawl, the naked upper body adorned with beaded jewelry, the face cast with a gentle smile underneath a five-leaf tiara, all hair pulled to a high chignon, H:15.5cm.

\$3500-\$4500



156  
晚清 玉柄花纹小刀

A jade inlaid handle knife, the metal knife body, decorated with interlaced floral pattern, the jade handle, of oblong shape, stone with creamy white tone, curved with the archaic pattern, accompanied with a fitted box, L: 25cm

\$500-\$1000



157  
窑变釉贯耳瓶 (耳损)

A flambe glazed Hu vase, 18th/19th century, of globular form raising from a short rounded foot to an elongated cylindrical neck, flanked by a pair of lug handle, applied overall with a thick copper-red glaze transiting from a crushed raspberry hue to a deeper tomato-red, with cascade of vivid lavender-blue, one broken ear, H: 36cm

\$600-\$800



158  
十九世纪 镀金佛教器皿盖豆三件

A set of three 19th Century gilt Buddhist vessels, the deep rounded sides rising to a straight rim, supported on a columnar base encircled with a raised band and terminating in a flared pedestal foot, surmounted by a conforming dome cover, with a knot shape knob, H: 27cm

\$400-\$600



159  
公元前 彩绘陶器罐

A Neolithic period double handled earthenware jar, with bulbous body rising from a low foot to a trumpet mouth, painted with geometrical patterns, H: 12cm

\$600-\$800



160  
汉代 黑釉双耳罐

A black glazed amphora, Han dynasty, of the globular body rising to a square mouth, body decorated with carved with the spiral pattern, flanked by a pair of curved handles, H: 19.5 cm

\$600-\$800





161  
锦盒五个

Five extra large storage boxes, 61 cm x 34 cm x 15cm, size varies

\$200-\$400



162  
两个刺绣眼镜袋

Two silk embroidery glass cases featuring malus spectabilis, and calligraphy, 13 cm x 6 cm

\$200-\$300



163  
清 刺绣凤凰补

Two silk thread embroidery on silk stains featuring phoenix and cloud patterns, 25.5cm x 25.5cm

\$300-\$500



164  
锦盒六个

Six black and yellow ground storage boxes, 43.5 cm x 23 cm x 20 cm, size varies

\$200-\$400



165  
锦盒九个

Nine miscellaneous storage boxes, 41 cm x 27 cm x 10.5 cm, size varies

\$50-\$200



166  
清 三彩人物立像

A female figure wears long robe, all hair pulled to a high chignon standing tall on a square shape base, arms crossed and hands holding beads, H: 28 cm

\$200-\$300



167  
清 胭脂红龙纹暗刻小杯 《大清光绪年制》款

A small carmine glazed cup engraved with two dragons playing with a pearl, a six character Guangxu mark on the base, accompanied with a fitted wood stand, H: 5 cm, Diam: 6 cm

\$100-\$200



168  
明 云雷纹白玉璧

A round piece of jade with a hole in its center, decorated with clouds and lightning pattern, overall of cream tone with russet inclusion, accompanied with a box, Diam: 5.3cm Weight: 45 grams

\$3000-\$5000



169  
清 竹雕人物笔筒

A bamboo carved brushpot, decorated with low-relief figure and high-relief landscape, Qing Dynasty, the brushpot of rectangular form supported on four short angle feet, H: 12.5cm

\$800-\$1200



170  
料器小圆环四个

Four pieces of rock crystal napkin rings, of circular form, in crystal tone, accompanied with a box, D: 5 cm

\$200-\$300



171  
景泰蓝饰品若干件

A group of cloisonné accessories, one blue floral design cloisonné necklace; one silver bracelet of ruyi shape, inlaid with jixiang Chinese character and archaic pattern; a pair of floral design hair clips; and two sphere shape openwork objects

\$300-\$500



172  
项链若干串

A collection of seven necklaces

\$500-700



173  
晚清 青花缠花罐

A blue and white ginger jar, of globular body, painted with floral sprays and scrolling vines Republic period, D: 22.5 cm, H: 24 cm

\$200-\$300



174  
清 佛像图带木盒

A buddha painting featuring a Gautama Buddha sitting on a lotus blossom, one hand in vitarkamudra, ink, and color on paper, 114 cm x 73.5 cm painting size, 85 cm x 15.5 cm x 9 cm, box size

\$600-\$800



175  
蓝地双耳龙纹赏瓶 (有修补)

A double ear porcelain vase, of subtly tapered square body surmounted by a waisted neck supporting a pair of simplified dragon-form handles, each side decorated with the dragon, and peony on blue glaze ground, H: 34 cm

\$300-\$500



176  
**葵花六瓣方壶 王寅春  
 (1897-1977)**

A zisha teapot, of narcissus flower shape form, with two seals of the artist Wang Yin Chun in the lid and base, height 10.3 cm

\$1000-\$2000

177  
**宜兴百果紫砂壶**

Of compressed globular form beneath a fitted cover molded as a mushroom, the sides suspending a water-chestnut handle and opposing lotus-shoot spout, separated by molded fruits and nuts applied to the shoulder in clays and slips of varied hues, all raised upon additional nut-form feet including a lotus pod enclosing individually potted seeds, bearing an impressed seal to the side of the spout reading jian (old damage to collar of lid) height 11.5 cm

\$1000-\$2000



178  
**炉壶 李宝珍 (1888-1941)**

A zisha teapot, of square-form raised on four feet, two sides inscribed with calligraphy, inner lid and the base marked with artist Xing Baozhen seal marks, 12 cm x 11.5 cm

\$1000-\$2000





179  
**十八世纪 梨形孟臣小壶 孟臣款**

A zisha teapot, of pear shape form, overall cover in black tone, the base with one artist Men Chen seal mark, H 9 cm.

\$2000-3000



180  
**紫砂壶**

A zisha teapot, of hexagonal compressed globular form, with a straight spout and curved handle, surmounted by hexagonal lid and knob, the base with an artist seal mark, H: 11 cm

\$300-\$500



181  
**杨彭年制 陈曼生刻字 曼生壶**

A zisha teapot, of pear shape form, overall cover in black tone, the base with one artist Men Chen seal mark, H: 9 cm.

\$2000-3000



182  
**十九世纪晚期 圆筒壶 蒋裕泰制 二泉刻**

A zisha teapot, of tall cylindrical form, carved with an inscription on the exterior, inner lid and the base marked with artist Jiang Yutai seal marks, H: 13 cm

\$1000-\$2000



183  
二十世纪 紫砂象生杂果一组

Rendered in clay of varied hues to depict a water caltrop, a water chestnut, a peanut, a sunflower seed, a walnut, an arrowroot, a ginkgo seed, and a tree chestnut together with a small dish marked Zhongguo Yixing, diameter of dish 14 cm

\$2000-\$3000

184  
二十世纪 紫砂壶

A Yixing pottery teapot, of gold fish form, the inner lid and base with artist seal marks, height 7.5 cm.

\$500-\$1000



185  
清 紫砂鸟食小盂

A Yixing water container for bird feeding, of cylindrical form, the base with a seal mark, diameter 3 cm.

\$300-\$500





186

**186  
高古玉配件一套**

Two pieces of jade accessories, flat lucky buckle, cylindrical, fish shape jade; another with ingot shape along with two beads, both pieces of dark tone suffused with russet inclusions

\$200-\$400



187

**187  
黄水晶戒指**

A topaz color stone ring, center set with topaz surmounted with brilliant-cut diamonds, D:1.4 cm

\$300-\$400



188

**188  
宝石耳坠两组**

A pair of cat's eye chrysoberyl cabochon earrings, clip fittings, D:1.7 cm; another pair of black stone cabochon earrings, clip fittings, D:1.7 cm

\$500-\$700



189

**189  
十九世纪 鸟食盆**

A blue and white porcelain bird feeder, of barrel form with the top cut open to reveal the interiors, later flanked on the sides with a later stylistic plastic handle, the exterior painted with lotus sprays, H:4.5 cm

\$100-\$200



190

**191  
唐 人物纹玛瑙带板**

A set of 12 agate textile plaques, each of rectangular shape, carved in low relief of figures playing various instruments, of grey agate with milky inclusions, accompanied with a box, the largest length: 8 cm

\$1000-\$1500



191

**190  
木雕底座三个**

A group of three imitations of root wood display stands, each carved to imitate a natural root, flat upper surface supported on a winding branch, two dark brown tones, one boxwood, H: 16.5 cm

\$400-\$600



192  
琥珀雕竹形笔筒

An amber carved brush pot, late Guangxu period, carved as conjoined bamboo stems and a cicada, applied with a bone rim, H: 10.5 cm. Provenance: Hartmut Richter, Berlin, Germany

\$1000-\$1500



193  
粉彩花盆 洪憲年制款

A famille rose porcelain planter and dish, each painted with the floral design on two panels, the base with two circular apertures and four-character Hongxian mark in iron red, H: 16.8 cm, D: 18 cm; ;

\$600-\$800



194  
黄地三彩龙纹小盘 《大清道光年制》款

A small porcelain saucer dish, the center painted with green and eggplant color dragons chasing each other, a six-character Daoguang mark on the base, diameter 14 cm.

\$300-\$500



195  
晚清 绿釉雕龙水呈

A porcelain waterpot, of globular form, mounted with a bat and a dragon on mouth rim, the exterior carved in low-relief of floral design, overall applied with green, yellow and aubergine glaze, D: 12.5 cm

\$200-\$400



196  
老硬木底座

A wood stand, of natural form, 26 cm x 10 cm

\$300-\$500



197  
晚清 银制三足香炉

A silver tripod censer, of compressed globular form, stand on three stylish cloud handles, the rim decorated with a key-fret band, inscribed with letter R on one side, 8 cm x 13 cm

\$500-\$700





198  
清光绪 粉彩八吉祥纹盘

The dish is decorated to the interior with a central roundel enclosing elaborate lime-green enameled lotus scrolls, all encircled by the Eight Buddhist Emblems, Bajixiang. The exterior is enameled with three floral sprays, Guangxu six-character seal mark in iron red and of the period, Diam:15 cm.

\$700-\$900

199  
清 青花双联鼻烟壶

Two blue and white porcelain snuff bottles attached together, both of pear shape body, decorated with painted landscape, female and male figure, accompanied with fitted wooden stand, both base with blue seal mark, W: 5.5cm H: 5.5cm

\$1000-\$1500



200  
青花矾红云蝠纹小盘 《大清光绪年制》款

A copper red and blue and white porcelain dish, painted in delicate shades of iron-red depicting auspicious bats amidst cobalt blue clouds, the base with six characters Guangxu seal mark in blue, D: 13cm

\$400-\$600



201  
老铜胎掐丝珐琅花瓶 一对 (有钻孔)

With wire inlays on cloisonné vases, the exterior painted with chrysanthemums and peonies on the blue ground body, flower and leaf patterns around neck and foot areas, the foot has pierced wholes used as table lamps before, H:40 cm

\$500-\$800



202  
清 五彩人物盖罐 大清康熙年制款

A wucan jar with cover, of baluster body with knobbed lid, the exterior painted with children playing in a garden scene landscape, the base with a six character Kangxi seal double ring mark, H: 20 cm

\$300-\$500



203  
民国 料器小黄杯一对 带底座

A pair of Peking glass cups, each made with deep rounded sides rising to a gently flaring rim, the glass in translucent yellow tone, accompanied with fitted wood stands, H: 4.5 cm

\$100-\$200



204  
老景泰蓝三足香炉

Three cabriole legs supporting a body of compressed bombe shape surmounted by two handles, painted with color foliate patterns, H: 17.5 cm

\$200-\$300



205  
清 缸豆红苹果水孟

An apple shape waterpot covered in a mottled red and green peach-bloom glaze, bearing an underglaze blue six-character Kangxi mark to the base, H: 7.5 cm

\$300-\$500



206  
均窑蛙形水注带底座 / 绿釉八角盖盒

A Junware frog shape waterpot accompanied with a fitted wood stand, H: 5 cm; An octagon cover box, with engraved flower pattern on the cover, painted overall in green colour, H: 4 cm

\$400-\$500



207  
宋 黑釉小碗带底座

A small black glazed bowl, of steep rounded side with short foot rim, accompanied with a fitted wood stand, the unglazed base is revealing buff body, H: 5.6 cm, Diam: 10.5 cm

\$200-\$300



208  
清 均窑赏瓶

A Junware vase of pearl shape, overall covered with a blue glaze accentuated with splashed purple markings, H:16 cm

\$200-\$300



209  
老景泰蓝瑞兽水注

A cloisonné waterpot, of oval body attached with the head and tail of a mystic beast, accompanied with a cover, with a turtle shape knob, body decorated with mystic beast design, raising from a tapered foot, H: 8cm

\$200-\$300



210  
清 青瓷小胆瓶连座 / 哥窑小梅瓶连座

A celadon glazed porcelain vase, of globular body with elegant waisted neck, supported with a tapered foot, with overall green glaze covered with russet crackles, accompanied with a fitted wooden stand, H: 10 cm;  
A Ge-type porcelain vase, of pear shape body raising to a short waisted neck with inverted rim, overall covered with russet crackles, accompanied with a fitted wooden stand, H: 6.5cm

\$300-\$500



211  
清 黄地龙纹玉壶春瓶带底座 / 素胎白釉扁腹瓶连座

A yellow ground porcelain Yuhuchun vase, of pear shape body raising to a waisted neck and garlic mouth, decorated with two dragons playing with a pearl, attached with a wooden base, H: 7.6 cm;  
A white glazed bottle vase, of compressed body raising to a cylindrical neck, supported with a short round foot, accompanied with a fitted wooden base, H: 7.7 cm

\$400-\$500

# TERMS & CONDITIONS

## STUNNING ARTS GALLERY AND AUCTION INC AS AGENT

The lots listed in this catalog will be offered by Stunning Arts Gallery and Auction Inc as owner or as agent for consignor(s) subject to the following terms and conditions. By bidding at auction you agree to be bound by these Conditions of Sale.

### BEFORE THE AUCTION

Prospective buyers are strongly advised to personally examine any property in which they are interested before the auction takes place. All lots are sold "AS IS" and without recourse and neither Stunning Arts Gallery and Auction Inc nor its consignor(s) makes any warranties or representations, express or implied with respect to such lots. No statement, whether written or oral, and whether made in catalog, or in supplements to the catalog, an advertisement, a bill of sale, a saleroom posting or announcement, the remarks of an auctioneer, or otherwise, shall be deemed to create any warranty, representation or assumption of liability. It is the responsibility of prospective purchasers to inspect or have inspected each lot upon which they wish to bid, relying upon their own advisers, and to bid accordingly.

### BIDDING IN THE SALE

Refusal of Admission Stunning Arts Gallery and Auction Inc has the right, at our complete discretion, to refuse admission to the premises or participation in any auction and to reject any bid.

#### Registration before Bidding

A prospective buyer must complete and sign a registration form and provide identification before bidding. We require bank or other financial references.

#### Bidding as Principal

To bid in person, the bidder will need to register for and collect a numbered paddle before the auction begins. Proof of identity will be required. Should you be the successful buyer of a lot, please ensure that your paddle can be seen by the auctioneer and that it is your number that is called out. All lots sold will be invoiced to the name and address in which the paddle has been registered and cannot be transferred to other names and addresses. When making a bid, a bidder is accepting personal liability to pay the purchase price, including the buyer's premium, all applicable taxes and all other applicable charges.

#### Absentee Bids

If the bidder cannot attend the auction, we will be happy to execute written bids on your behalf. Absentee bids in writing must be submitted to Stunning Arts Gallery and Auction Inc at least 24 hours prior to the sale by letter or fax. In the event of identical bids, the earliest received will take precedence.

#### Reserves

Each lot may be subject to an unpublished reserve which may be changed at any time by agreement between the auctioneer and the consignor.

#### Auctioneer's Discretion

The auctioneer has the right at his or her absolute and sole discretion to refuse any bid, to advance the bidding in such a manner as he or she may decide, to withdraw any lot, and in the case of error or dispute, and whether during or after the sale, to determine the successful bidder, to continue the bidding, to cancel the sale or to re-offer and resell the item in dispute. If any dispute arises after the sale, our sale record is conclusive.

#### Successful Bid

The highest bidder acknowledged by the auctioneer will be the purchaser. In the case of a tie bid, the winning bidder will be determined by the auctioneer at his or her sole discretion. In the event of a dispute between bidders, the auctioneer has final discretion to determine the successful bidder or to re-offer the lot in dispute.

### AFTER THE SALE

#### Buyer's Premium

In addition to the hammer price, the buyer agrees to pay Stunning

Arts Gallery and Auction Inc a buyer's premium and the applicable sales tax added to the final total. Each lot sold is subject to a premium of 20% of the successful bid price of each lot up to and including \$50,000 and 18% on any amount in excess of \$50,000 as part of the purchase price. Online bidding is subject to a 23% buyers premium.

#### Deposit

The contact information provided by the purchase must be accurate and true. The auctioneer reserves the right to request a deposit to be provided before bidding and will be used against any and all purchases made at the auction.

#### Taxes

Unless exempted by law, the buyer is required to pay HST on the total purchase price including buyer's premium. For international buyers, taxes are not applicable when purchases are shipped out of country. Items shipped out of Ontario, the buyer is required to pay taxes as per the tax status of that province, whether is HST or GST.

#### Payment

Immediately after the purchase of a lot, the buyer shall pay or undertake to the satisfaction of the auctioneer with respect to payment of the whole or any part of the purchase price requested by the auctioneer, failing which the auctioneer in his sole discretion may cancel the sale, with or without re-offering the item for sale.

The buyer shall pay for all lots within 7 business days from the date of the sale, after which a late charge of 2% per month on the total invoice may be incurred or the auctioneer, in his sole discretion, may cancel the sale. The buyer shall not become the owner of the lot until paid for in full. Items must be removed within 10 days from the date of sale, after which storage charges may be incurred.

Each lot purchased, unless the sale is cancelled as above, shall be held by the auctioneer at his premises or at a public warehouse at the sole risk of the buyer until fully paid for and take away.

Payment for purchases must be by cash, INTERAC direct debit (Canadian clients in person only), certified cheque (U.S. and Overseas not applicable), bank draft, electronic transfer (fee applies), and VISA or MASTER or AMERICAN EXPRESS card.

Should the item not be paid for within the time limit stated, the auctioneer, without limitation of the rights of the consignor and the auctioneer against the buyer, may resell any of the articles affected.

### SHIPPING

Shipping is provided at the buyers' expense. Stunning Arts Gallery will provide a list of shippers. The purchased items will be released with the buyers' written consent and until payment has been made in full. Shipping, packing and handling is at the entire risk of the buyer. SAG will have no liability of any loss or damage to such items.



# Stunning Arts Gallery & Auction

20 Steelcase Road W., #1A

Markham, ON L3R 1B2

Phone/Fax: 905-604-8288

Email: [stunningartsgallery@gmail.com](mailto:stunningartsgallery@gmail.com)

## ABSENTEE/TELEPHONE BIDDING COMMISSIONS FORM 电话委托竞拍表格

Name: 名字:			Telephone Bid <input type="checkbox"/>	Absentee Bid <input type="checkbox"/>
Phone: 联系电话:	Email: 电子邮件:			
Address: 地址:				
City: 城市:	Province: 省:	Postal Code: 邮编:		
Credit Card Number : 信用卡号码 :		Expiry Date : 到期日期 :		
Name on Card: 持卡人姓名 :		CVV: 卡后三位安全码:		
Billing Address (if different): 账单邮寄地址:				

LOT NUMBER	DESCRIPTION	MAXIMUM BID

All absentee bids will be accepted until 5 hours before the beginning of the auction. Phone lines are limited and telephone bids are taken on a first come, first serve basis for each lot. If all the phone lines are reserved for a lot you requested, you will be contacted in order for you to leave an absentee commission bid. While we are pleased to offer telephone bidding as a service to our clients, and take great care in their commission, we will not be held responsible for any errors or omissions. All sales are subjected to a 20% buyer's premium added to the hammer price, 18% on any bids over CAD \$ 50,000. I request Stunning arts gallery & auction to execute these bids on my behalf and I agreed to the auction terms and condition.

Signature 签名	Print Name 正楷签名	Date 日期
-----------------	--------------------	------------

Please send all completed forms to Stunning arts gallery & auction by mail, email or fax provided above.