



001
賞石

A grey scholar's rock, accompanied with fitted wood stand, height 9cm, weight 1638g.

\$100-\$200



002
賞石

A taupe limestone rock, covered with crevices, ridges and jagged protrusions, accompanied with fitted wood stand,height 16cm weight 2134g.

\$100-\$200



003
賞石

A brown limestone scholar's rock, in screen form, accompanied with fitted wood stand, height 9cm, weight 2064g.

\$100-\$200



004
賞石

A scholar's rock, of dark beige tone, with smooth and polished surface, accompanied with fitted wood stand, height 9.5cm, weight 720g.

\$100-\$200



005
賞石

A khaki limestone scholar's rock, accented with ridges, crevices and jagged protrusions, height 19cm, weight 2777g.

\$100-\$200



006
天然賞石

A scholar's rock, in form of a mountain peak, accented with ridges and jagged protrusions, accompanied with fitted wood stand, height 16cm, weight 2371g.

\$100-\$200

007
天然賞石

A taupe stone boulder, of circular shape, suffused with white veining, accompanied with fitted wood stand, height 14cm, weight 2361g.

\$100-\$200



008
黑禪石

A black dhyana stone boulder, accompanied with fitted wood stand, height 11cm, weight 3138g.

\$100-\$200



009
天然賞石

A limestone stone, of horizontal orientation, featuring multi-layered height 10cm, weight 3380g.

\$100-\$200





010
黃蠟石

A yellow wax stone, of vertical orientation, featuring several small openings, accompanied with fitted wood stand, height 14.5cm, weight 1490g.

\$100-\$200



011
賞石

A black pottery stone, with smooth and polished surface, accompanied with fitted wood stand, height 16cm, weight 2664g.

\$100-\$200



012
黃蠟石

A yellow wax stone, of, accompanied with fitted wood stand, height 21cm, weight 4038g.

\$100-\$200

013
黄蜡石

A yellow wax stone, featuring a central crave, with dark brown inclusions, accompanied with fitted wood stand, height 10cm, weight 3371g.

\$100-\$200



014
黄蜡石

A yellow wax stone boulder, featuring several small openings, accompanied with fitted wood stand, height 14cm, weight 2370g.

\$100-\$200



015
赏石

A weathering scholar's rock, covered with crevices and jagged protrusions, accompanied with fitted wood stand, height 13cm, weight 2787g.

\$100-\$200





016
賞石

A yellow agtized, accompanied with fitted wood stand, height 12.5cm, weight 2001g.

\$100-\$200



017
賞石

A sedimentary scholar's rock, accompanied with fitted wood stand, height 12.5cm, weight 2440g.

\$100-\$200



018
黄蠟石

A yellow scholar's rock, covered with crevices, ridges and jagged protrusions, accompanied with wood stand, height 17.5cm, weight 6485g.

\$100-\$200

019
賞石

A agatized rock boulder, accompanied with fitted wood stand, height 8cm, weight 863g.

\$100-\$200



020
暗刻青瓷小碗

A celadon bowl, of deep rounded sides rising from circular foot rim, overall applied with olive-green glaze suffused with transparent crackles inside the bowl, with white ribs incised to the exterior. the unglazed base reveals the buff body and the recessed base, height 8 cm, diameter 13 cm.

\$200-\$300



021
龍泉暗刻青瓷花卉碗

A longquan celadon bowl, of rounded sides rising from a short foot, the interior incised with human figures and repeated key fret motif surrounded the exterior rim , overall covered with a rich see-green glaze and the recessed base, height 8.8 cm, diameter 15.9 cm.

\$300-\$400





022
雙魚小盤

A celadon dish interior carved with a pair of carps to the cavetto and with ribs incised to the exterior, diameter 20 cm.

\$300-\$400



023
青瓷小罐

A celadon jar, of of globular body, supported on a short slender spreading foot, potted with copper apple green glaze applied to the bodies, double-raised fillets around the mouth, unglazed base, foot rim is missing some parts, height 10 cm, diameter 6 cm.

\$300-\$400



024
泥鰍黃雙耳小罐

A miniature jar, of globular body molded with two lug handles, suffused with loach yellow- glazed excluding the base, height 7 cm, diameter 9 cm.

\$300-\$400

025
哥釉水罐

A Ge-type jar, of globular body with a tapered mouth rim, rim molded with copper-imitating design, overall covered in a glaze with subtle splashes of brown tone, suffused with a matrix of dark iron crackles and the recessed base, height 11.5 cm, diameter 10.5 cm.

\$300-\$500



026
油燈和小杯

An oil lamp, of rectangular form, glazed with blue, green and yellow surrounded by lattice openwork, supported on a high splayed foot. A miniature jar, of cylinder form, the amber glaze extending to the lowest quadrant of the vessel exposing the buff body beneath, red mark on the bottom, oil lamp height 16 cm, cup height 6.2 cm.

\$300-\$500



027
刻花小盤

A celadon dish, the cavetto incised with a blooming flora and floral sprays, sloping gently to the rim with a celadon glaze throughout excluding the base, diameter 14.5 cm.

\$500-\$700





028
清末 青花番花紋大盤

A large blue and white porcelain plate, decorated with five blooming lotus sprays and scrolling vines contained between double blue line borders, diameter 36.8 cm. Minor chipping to rim.

\$500-\$800



029
三彩圓瓷板

A wooden panel tray, engraved two flying birds upside down and clouds, overall painted in green, the rim edge covered by an iron steel, red mark on reverse side, diameter 19.5 cm.

\$200-\$300



030
廣彩人物圓盤

A large porcelain plate, polychrome painted of figural garden scenes, birds, butterflies. The flat side with a narrow band of floral and foliage scrolls around the rim, marked China in red on base, diameter 21 cm.

\$200-\$300



031
二十世紀早期 廣彩人物大碗

A large porcelain bowl, well potted and with polychrome enamel, painted on the interior and around the exterior with alternating panels of cartouches with court scenes, birds, butterflies and flowers reserved on a gilt ground throughout, diameter 27.5 cm., with a sticker to the base.

\$500-\$800



032
清道光 豆青釉粉彩花鳥紋盤一對

A pair of porcelain plates, decorated to the interior with birds, butterflies and blooming floral sprays, applied turquoise glaze throughout, the rim decorated with gilt, blue mark seal on the base, diameter 15 cm.

\$200-\$300



033
清光緒 珊瑚紅地纏枝牡丹紋茶杯組

A pair of red-coral porcelain tea sets, potted with deep rounded sides, raised on a short foot, the exterior decorated with peony and encircled by leafy tendrils, the base with six-character Guangxu mark in red, diameter 12 cm.

\$200-\$300



034
磁州窯白地黑花梅瓶

A meiping vase, well potted with rounded shoulders supporting a waisted neck and tapering down to a broad base, painted in dark ink with plum bloom, height 20.5 cm.

\$300-\$500



035
三彩三足盤

A tri-color tripod dish, of shallow rounded sides resting on three short beast-mask feet, incised on the flat interior with a central roundel of a goose in flight encircled by radiating lotus leaves and foliate tendrils, glazed alternately with green and amber, base revealing the buff body, diameter 20.5 cm.

\$300-\$500



036
黃地青花龍紋圓瓷板

A flat round porcelain charger, decorated with two dragons flying and auspicious clouds in blue and white on yellow ground, double blue line borders and unglazed base, diameter 25 cm.

\$700-\$900



037
青花龍紋筒瓶 康熙年制款

A blue and white verte gu-shaped vase, of slender cylindrical body, terminating to a flared mouth rim, exterior painted with two dragons, blooming peony, and scrolling floral, four-character Kangxi mark in blue on the base, height 25 cm, diameter 10.5 cm.

\$300-\$500



038
青花花鳥大罐帶木蓋

A blue and white jar, of baluster body, the exterior painted with blooming flowers, plant sprays, hollow rocks and butterfly hovering above, a key-fret encircled the neck, with a pierced design dome cover, height 23 cm, diameter 21.5 cm.

\$500-\$800



039
白釉刻花斗笠碗

A celadon conical bowl, of steep sides with a slightly flared mouth rim, all supported on a short foot, the interior incised with flowers and tendrils, overall covered in an ivory white glaze, diameter 17 cm.

\$300-\$500



040
哥釉開片圓盤

A porcelain dish, of shallow sides supported on a short circular foot, overall covered with a greyish-cream glaze with a network of dark brown crackles, diameter 21.5 cm.

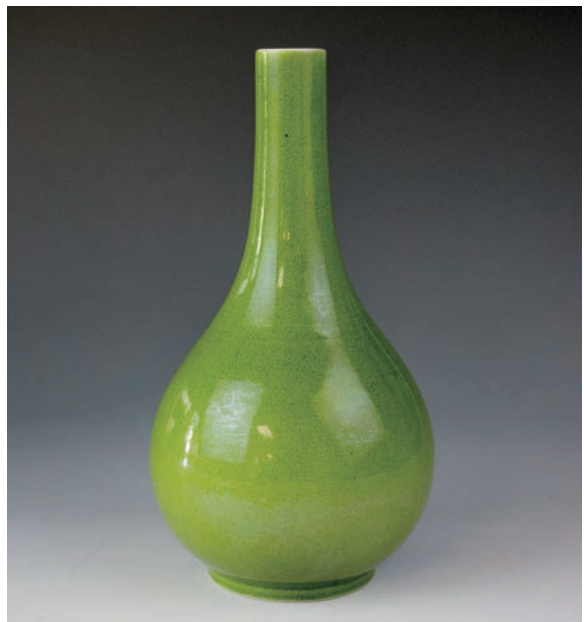
\$300-\$500



041
鈞窯天藍釉大碗

A junyao bowl, of deep rounded sides resting on a short foot ring, covered overall with a blue glaze accentuated with splashed purple markings, and the recessed base, height 9.5 cm, diameter 19.5 cm.

\$300-\$500



042
瓜皮綠釉長頸瓶 大清雍正年制款

A porcelain flask, of a globular body surmounted by a tall cylindrical neck, raised on a slight flared foot, covered with the opaque glass of water melon green glaze, six-character Yongzheng mark to base, height 26cm.

\$1,000-\$1,500



043
童子玉雕擺件

A white jade, carved with two boys and a beast, height 5 cm, width 5 cm.

\$500-\$700



044
清 翡翠玉環挂件

A jadeite Yuhuan pendant, with the tone of milky celadon and small russet inclusions, diameter 5 cm.

\$200-\$300



045
清 和田玉煙嘴

A Hetain white jadeite cigarette holder, of barrel body with tapered mouth, the stone of white tone with light russet inclusions, height 4.5 cm.

\$200-\$300



046
清末 和田青白玉玉貴人

A Hetian celadon- white jade, Qing dynasty, depicting a women figure, the stone of pale greyish-white tone with light russet inclusions, height 4.3 cm.

\$300-\$500



047
玉雕件兩件

Two pieces of white jade, one in form of a recumbent pixu mythical beast, the other one carved in a stretching neck tortoise, height 3.5 cm.

\$200-\$300



048
清“福壽綿綿”玉佩

A jade pendant, Qing dynasty, craved in low relief with four Chinese characters Fushoumianmian on the observe, carved with deer figure on the reserve, slightly irregular in thickness, diameter 5.5 cm.

\$500-\$700



049
玉璧一對

A pair of Jade bi discs, each of flattened circular form pierced with a central aperture, incised with a dense pattern of spiral scrolls on the reserve, the stone of light brown, yellow and russet tone, diameter 6.8cm.

\$400-\$500



050
竹雕小獅子一對

A pair of bamboo carved lion, both lion depicted with head turning sideways and with a playful expression by spiting tongue, both lions are playing ball with another lion underneath, height 7 cm.

\$100-\$200



051
清末 粉彩山水花盆

A famille rose jardiniere, of deep rounded sides terminating to an everted rim, all raised on a circular foot ring, painted with an aged pine tree at riverside and continuous landscape scenery a sticker on the interior, the base pierced with a drainage holes, accompanied with a Over 100 Years certificate issued by China Arts Merchants, height 18 cm, diameter 26.5 cm.

\$800-\$1,200



052
銀鑲金蓋托帶杯子一對

A pair of Tibetan agate teacups, the repousse cup and stand finely chased with eight Buddhist symbols on eight petals, the stem finely carved with lotus, and flower in panels; the silver lid with dragon, Garuda, snow lion and lion in four panels, with floral designs in four panels above and topped with a single coral stone, a coral porcelain cup, of steep rounded sides on the stand, height 16 cm.

\$200-\$300



053
龍鬚銅燙斗

A bronze pan-like vessel, of silk-iron form with a handle, carved with floral motif on exterior, black patina with brass, wood and cloth material inside the handle, height 13.5 cm.

\$200-\$300



054
麻將盒

A complete set of Chinese mahjong pieces in wood box, of rectangular form, surmounted by a pair of swing handles, a rectangular shaped sliding plaque depicting bird on the tree branch enclosed by a darkwood border, each tiles are bone and bamboo adorned with Chinese-themed art and calligraphy, five wood drawers, five circular apertures on the rear of box, blackish-red tone of the wooden box, height 23.5 cm, length 19 cm, width 14.5 cm.

\$300-\$500



055
康熙 道光 印泥盒两件

Two pieces of ink boxes, a blue and white porcelain, of circular form, the lid decorated with a scholar and his student, with a floral motif partially encircling the base, six-character Da Qing Kangxi mark in unglazed blue, diameter 8.7cm, a famille rose porcelain, painted with auspicious flowers of pomegranate, the base inscribed with six-character Da Qing Daoguang Nian Zhi mark in red, diameter 10 cm.

\$500-\$1,000



056
廣彩人物紋溫盤

A famille rose porcelain warming plate, of circular body supported on a straight foot with shallow rounded side, two water spouts on both side, central figural scene depicting court life, floral sprays and birds on the border, minor chips on rim and spout, diameter 23.6 cm.

\$500-\$700



057
青花茶壺

A blue and white porcelain teapot, of cylindrical form, set with a slender 'S' spout, decorated with eight scholars scene around the exterior, a Chinese character longevity within a double-circle on the lid, height 12 cm, diameter 11 cm.

\$300-\$500



058
清 鏤空雕如意轉心佩挂件

A white jade pendant, mid Qing dynasty, carved with double serpentine ring, swirling clouds, diameter 5 cm.

\$800-\$1,200



059
清 黃玉瑞獸挂件

A yellow jade pendant, mid Qing dynasty, carved in a crouched position with head turned sharply over the left shoulder, four legs with hooves tucked under the belly, length 4 cm.

\$3,000-\$5,000



060
清 白玉鏤空如意壽字佩挂件

A white jade pendant, openwork carved with floral scroll and a Chinese character longevity, height 5 cm.

\$3,000-\$5,000



061
玉蟾蜍把件帶珊瑚珠子

A white jade, carved with toad, the stone of white tone with russet inclusion, decorated with a coral bead on the chain, width 5cm.

\$3,000-\$5,000



062
斗方一組六幅

Various paintings, of birds, fishes, and flowers, watercolour on paper, four paintings with seals of the artist, two paintings without seal, approx 30 cm x 41 cm, all measurements are estimated and each painting size is varied, please contact auction house for details.

\$600-\$800



063
清胡臻畫七幅

Various paintings, signed and titled, with one or two seals of the artist, ink and watercolour on paper, approx 93 cm x 32cm, all measurements are estimated and each painting size is varied, please contact auction house for details.

\$600-\$800



064
條幅一組八幅畫

Various subjects, eight paintings without seal, watercolour on paper, approx 150cm x 45cm, all measurements are estimated and each painting size is varied, please contact auction house for details.

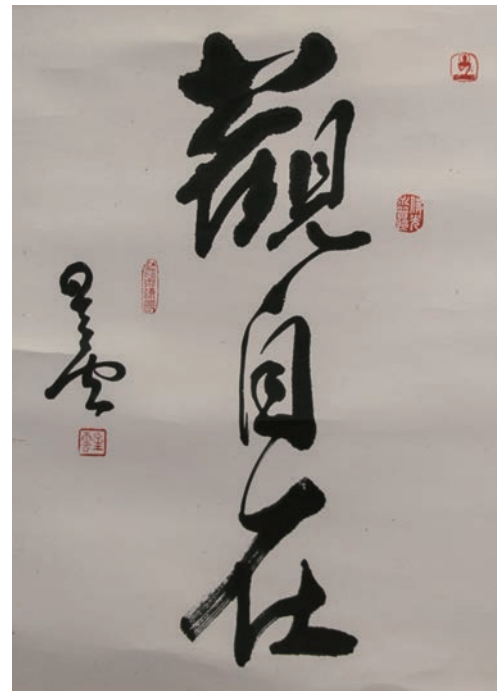
\$600-\$800



065
艾軒 (1947 -) 素描

Girl figure, signed and dated Aixuan, pencil on paper, 54cm x 39.5cm.

\$500-\$800



066
星雲大師 (1927 -) 書法

Calligraphy, signed Hsingyun, with four seals of the artist, ink on paper, 50cm x 37.5cm.

\$500-\$800



067
黎龍生 歸漁 立軸

Landscape and boats, signed Li Longsheng, with two seals of the artist, watercolour on paper, hanging scroll, 76.5cm x 44.5cm.

\$500-\$800



068
黎龍生 嶺南春色 立軸

Flowers and butterflies, signed Li Longsheng, with one seal of the artist, watercolour on paper, hanging scroll, 69cm x 37.5cm.

\$500-\$800



069
馬鵬 (1933-) 松之韻 鏡心 / 帶出版畫冊

Pine tree, inscribed and signed Ma Peng, with three seals of the artist, ink and watercolour on paper, comes with a Peng Ma Paintings book, 68cm x 68cm.

\$500-\$1,000



070
黃金領帶鏈

A gold tie chain, surmount of circular form, carved Gold Star on the textured gold, suspended in a 9999 yellow gold link chain, length 11.5cm.

\$500-\$1,000



071
LOUIS VUITTON 手提包

Exterior is in dark brown Damier Ebene coated canvas with gold hardware, interior is in a red Alcantara lining and offers organization with two slip pockets, excellent condition. Included a dust bag and a receipt voucher from Holt Renfrew Toronto, guaranteed authentic. 33 cm x 14 cm x 24 cm.

\$1,500-\$2,000



072
老珊瑚圓珠項鍊

One red coral necklace, comprised of numerous rounded red coral beads, Bead diameter 1.1 cm -1.7 cm, 83.97 grams, necklace length 60 cm.

\$3,000-\$5,000



073
玉石項鍊

A Jade stone necklace, mainly comprised of 13 alternating spherical carved jade beads with longevity character in the center and abstract foliate and floral shapes, animal figures beads and small amber colour beads, diameter 3 cm.

\$200-\$300

074
料器朝珠

A necklace consisting of sixty-three opaque glass beads, each inlaid with blue enamel florals, each bead approx. diameter 0.5 - 1.3 cm.

Provenance: A Toronto private collector purchased from Waddingtons June 2013 Asian Art Auction.

多倫多藏家 2013 年 6 月購自 Waddingtons

\$1,500-\$2,000



075
沉香木山子擺件

A large aromatic aloeswood boulder, carved to depict a mountainous landscape intricately detailed with huts, bridge, and human figures engaged in horse bathing activities, with stand box, height 25 cm, width 18.5 cm.

\$5,000-\$8,000



076
清末十三行 描金竹筆筒

A bamboo brush pot, of cylindrical body, with flat opening and base, the exterior portrayed figures in courtyard, height 14.5 cm, diameter 11.7 cm.

\$1,000-\$2,000



077
灑金雙耳三足銅爐

A bronze censer, of compressed globular body franked with two arched handles and supported on three pointed feet, mottled with irregular gilt speckles on the exterior, four-character incised on the base, diameter 12 cm.

\$500-\$1,000



078
鈞窯藍釉如意形水洗連座

A Jun ware washer, of shallow ruyi shaped body supported by four cabriole feet, overall covered with a blue glaze accentuated with splashed purple markings, accompanied with a fitted wood stand, height 2 cm, length 8 cm.

\$200-\$300



079
雙圈款 豇豆紅鎏羅洗

A peachbloom-glazed brush washer, with low rounded sides, incurved at the mouth, the interior with a crack in the middle, the recessed base with a double circle mark, height 3.5 cm, diameter 12 cm.

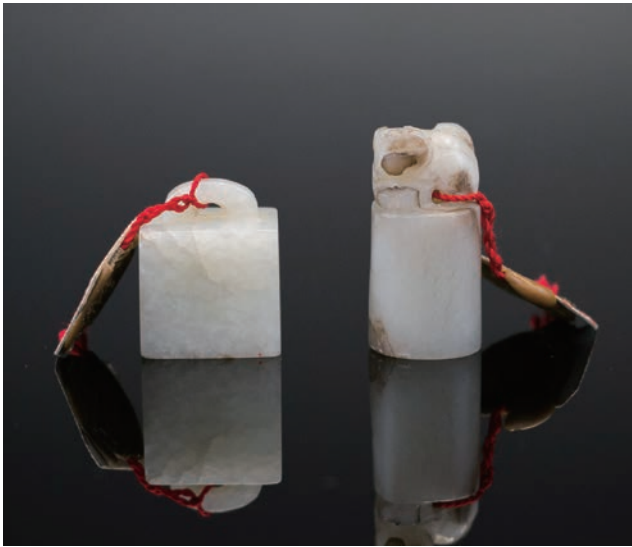
\$800-\$1,200



080
雍正款 牛血紅釉搖鈴尊

A copper red glazed vase, the mallet-shaped, with a slender neck, raised on a low foot, the white base with a six-character Yong Zheng mark, height 11 cm.

\$500-\$1,000



081
玉印章兩件

Two pieces of jade seals, one in the form of a lock, the seal face carved with four characters, height 1.6 cm, width 2 cm, another one of oval section, carved a mythical beast on the top, uncarved seal face, height 3 cm, width 1.7 cm.

\$300-\$500



081A
19 世紀 白玉雕龍鈕印章

A pale celadon jade dragon seal, 19th century, height 5 cm.

\$600-\$1,000



081B
清 白玉雕龍把件

A white jade dragon and bi disc, Qing dynasty, height 4.5 cm.

\$600-\$1,000



081C
清 白玉雕靈猴把件

A white jade monkey pebble, Qing dynasty, height 3 cm.

\$600-\$1,000



082
竹臂攔

A pair of bamboo wrist rests, incised with cursive script calligraphy couplet, height 28cm, width 6.4cm.

\$300-\$500



083
金木雕公仔一對

Two gilt wood sculpture, one carved a soldier riding on the horse, another one carved a soldier holding a boy on the lion, with black wood stand, height 15 cm, width 6 cm.

\$300-\$600



084
壽山石人物

One Shoushan stone figure, depicting a figure holding a jar in his right hand and a string of Buddhist beads in his left hand, the stone of pinkish white color, height 7 cm.

\$300-\$500



085
王炳榮款 雕瓷藍釉瓶

A blue glazed vase, of globular body connecting to a slender neck, decorated in the low relief with flower patterns on the mouth rim; leaves patterns on the neck; ducks and flowers on the body, the base with four-character Wang Bingrong mark, height 22 cm.

\$300-\$500



086
哥釉地粉彩刀馬人物瓶

A famille rose vase, of a baluster form set with brown handles on the neck, decorated in low relief with auspicious clouds on the rim and bottom, painted with figures fighting on horses; the base with a two-character mark, height 32 cm.

\$500-\$1,000



087
汪章款 茶葉罐

A Chinese lidded porcelain tea caddy, of a cylindrical form, painted with a lady standing by the window scene, inscribed with poem, signed by Wang Zhang, a famous Chinese ceramic painting master of late Qing Dynasty, height 12 cm, diameter 9.5 cm.

\$300-\$500



088
清中期十三行 玳瑁扇

A tortoiseshell fan, comprised with 20 pieces, length 24.5 cm.

\$800-\$1,200



089
清中期 螺鈿扇骨西洋人物故事扇

The face of the fan painted with five western figures, the framework of the fan made by raden with gilt flower and leaf patterns, cased in a semicircle shadow box, length 55 cm, height 31 cm.

\$500-\$1000



090
寶鼎款 銅爐配沉香

A rectangular bronze Censer, accompanied with a piece of aloeswood, supported on four stylized cabriole feet, with a pair of lion head knobs, the base with Bao Ding mark, height 6 cm, length 13 cm, width 7.5 cm.

\$500-\$1,000



090A
清 粉彩人物三角水盂一對

A pair of famille rose triangular bowls, Qing Dynasty, height 7.5 cm.

\$500-\$1,000



091
清 任淇 竹雕筆筒 竹林雅集

A bamboo brushpot, carved and decorated in high relief with many scholars around bamboo groves, inscribed by Renqi Qing Dynasty, the brushpot of short cylindrical form supported on three bracketed feet, height 21 cm, diameter 16.5cm.

\$800-\$1,200

任淇，生年不詳，卒於1861年。字竹君，號建齋，浙江蕭山人，任熊族叔。工書法，精篆刻，擅畫花鳥、人物、界畫。畫風工細。



092
清 硬木嵌銀絲壽星公像

A wood carved figure, depicting Shou longevity immortal holding his staff in his left hand and a peach in his right hand, decorated with silver flower patterns and lines on the body, height 38 cm.

\$800-\$1200



093
小金木刀馬人物

One gilt openwork wood panel, of rectangular form, carved with armed figures on horseback amongst pavilions, 26.5 cm x 14.5 cm.

\$200-\$400



094
金木雕掛屏

One gilt wood hanging screen, of a rectangle form, divided into five sections with a black background, three sections depicting birds and flowers on the right side, one section openwork carved and pierced with entanglement flowers and branches in the middle, one section carved flowers and branch on the pink background on the left side, 37cm x 152cm

\$500-\$1,000



095
翡翠獅子印章

A jade seal, of rectangle section surmounted by a lion, the jade of white tone and green inclusions, uncarved seal face, height 6.5 cm.

\$800-\$1,200



096
出口描金大盒

A Chinese export black lacquer work box, from 19th century, with gilt decoration overall including buildings and figures in landscape settings, supported by four dragon-foot-shaped feet, with some lines of shrinkage, the inside in black lacquer and surface of the whole body with some age cracks and chipping, 13 cm x 37 cm x 29.5 cm.

\$300-\$500



097
紅漆雕方形盒

A Chinese red cinnabar lacquer box, in a rectangle section, deeply carved with two figures in a garden, the sides in peony, leaf and bat patterns; inside and base in black lacquer, light age related wear with small touch-ups to edges, with some cracks, 7.5 cm x 18 cm x 12.5 cm.

\$200-\$400



098
荷葉形木雕

A wood 'lotus leaf' saucer, well rendered and carved in the round as an open lotus, the leaf with incised details, the base carved with two stems connecting two small lotus besides the lotus leaf, one of lotus missing a small part, 18 cm x 13 cm

\$200-\$300



099
清 酸枝梳妝台

A dressing case, of a rectangle section with a pair of curved handles on both sides, applied with many copper hinges, containing a bust mirror, one long drawer and seven short drawers, 20 cm x 34 cm x 26 cm.

\$800-\$1,200



100
石灣瓷 笑佛 庄稼款

A Shiwán pottery porcelain figure, depicting seated Laughing Buddha wearing voluminous robes open to expose the chest and ample belly, with a rosary round the neck, three ZhuangJia seal marks inside the unglazed base, with fitted wood stand, height 25 cm.

\$1,000-\$1,500



101
石灣瓷 呂祖 劉澤綿款

A Shiwán pottery porcelain figure, depicting LuiZu seated with one leg crossed, holding a hossu in his right hand, carrying a sword and hat on his back, three LiuZemian seal marks inside the unglazed base, height 39 cm.

\$1,000-\$1,500



102
石灣瓷 李白 劉炳款

A Shiwán pottery porcelain figure, depicting Li Bai draped in long robes holding a scroll in his hand, applied with greyish, russet and dark brown glaze, two LiuBing seal marks inside the base, with fitted wood stand, height 25 cm.

\$1,000-\$1,500



103
石灣瓷 降龍羅漢 劉澤綿款

A Shiwán pottery porcelain figure, depicting Xianglong Arhat wearing loose robe revealing partial of his chest, sitting on top of a cliff with a bowl aside, dragon under the cloud, three LiuZemian seal marks inside the unglazed base, height 29 cm.

\$1,000-\$1,500



104
藍釉頸瓶

A porcelain vase, of globular body connecting to a slender neck, raised on a low foot, overall covered in turquoise glaze, height 18.5cm.

\$500-\$800



105
紫檀筆筒

A Zi Tan wood brush pot, of cylindrical form, the exterior smoothly polished, with rich dark brown hue in colour, height 15.5 cm, diameter 16 cm.

\$1000-\$1,500



106
粉彩花鳥對碗 大清光緒年制款

A pair of famille rose porcelain bowls, with foliate rim, painted with six cranes and auspicious flowers, gilt on mouth rims, the base inscribed with six-character Da Qing Guangxu Nian Zhi in blue mark, height 6.2 cm, diameter 10 cm.

\$4,000-\$6,000



107
鐘山 淺絳彩象鼻小尊

A qianjiang painted porcelain vase, Republic period, of pear-shaped body flanked by a pair of trunk like handles, decorated with bird perching on blossom tree surrounded by peony clusters, inscribed with poems, unglazed base, height 23.5cm.

\$1,000-\$1,500



108
剔紅百寶嵌人物掛屏

An embellish cinnabar lacquer hanging screen, depicting two female figures, inlaid with carved jade and jadeite, carved with geometric pattern on background, enclosed by rosewood frame, height 48 cm, width 27.8 cm.

\$500-\$800



109
康熙年制四字款 青花刀馬人物故事抱月瓶一對

A pair of blue and white porcelain moonflask vases, of the circular body rising from a splayed oval foot to a cylindrical neck flanked by a pair of lizard-like handles, painted with figures fighting on horses, key-fret border encircles the mouth rims and scrolling floral on the outer edges the base with four-character Kangxi mark in blue, height 25cm, diameter 14cm.

\$1,000-\$2,000



110
酸枝木桌屏

A Suanzhi rosewood table screen of rectangular shaped plaques, painted with cicada on flower, meticulous on silk, accompanied with fitted Suanzhi rosewood frame and stand, height 61cm, painting 26.5cm.

\$500-\$800



111
爐鈞釉細頸瓶

A porcelain vase of pear-shaped body surmounted by a slender neck and a trumpet mouth rim, the mouth rim is asymmetric, applied overall with a lustrous robin's egg blue glaze thinning at the mouth in russet tone, height 17.5cm.

\$1,000-\$1,500



112
馬慶雲 淺絳彩 “吉星拱照” 方瓶一對

A Pair of Qianjiang porcelain vases, of contoured squared form with applied dog finials, body decorated with blooming flowers, birds and chrysanthemum and figural painting, rendered with black and red calligraphy on two sides, the base pierced with a hole on six character mark in red seal on base, height 43cm, width 15.5cm.

\$7,000-\$10,000



113
清康熙 青花西廂記故事盤一對

A pair of blue and white porcelain plates, each interior painted a scene from Romance of the Western Chamber within a double-circle border, profusion florets in various tones of chrysanthemum, peony, pomegranate and morning glory within further double-circles border and additional court scene figure to the outer rim, the exterior painted with band of composite floral scroll, diameter 22.3cm.

\$800-\$1,200



114
清初 青花纏枝牡丹大盤

A large blue and white porcelain charger, of rounded sides rising from a short tapering foot, the interior decorated with leafy scrolling blooming lotus sprays, single leafy branches on the exterior, gilt around the rim, the recessed base, diameter 37.8cm.

\$1,200-\$2,000



115
霽藍茶壺

A porcelain teapot, a hemp rope tied to the lid and the handle, overall applied with deep blue glazed, the base with a fluorescent green sticker, height 7.5 cm.

\$700-\$1,200



116
劉童款 紫砂井欄壺

A Zisha teapot, of pear-shaped body, all of an even dark green colour, underside of top maked and seal mark to base of the artist Liu Hao, height 7.5 cm.

\$300-\$500



117
范建華款 漢鐸壺

A Zisha teapot, in form of bell shape, with angled shoulder to a waisted rim, four artist seal marks FanJianhua on the base, inner lid, and handle, height 6.5 cm.

\$800-\$1,200



118
王偉子款 大紅袍紫砂壺

A zisha teapot, of globular body with curved handle and short spout, incised three marks on base, inner lid, and handle, Dahongpao carved below the artist seal on the base, height 6.5 cm.

\$1,200-\$2,000



119
和田白玉雕雙鷹把件

A well carved jade eagle groups with clouds shape carving on the base, 9cm.

\$2,500-\$3,500



120
和田白玉雕獅子捧繡球擺件

A well carved lion holding a ball on its hands, 9.5cm.

\$3,000-\$4,000



121
和田白玉雕鳳鳥擺件

A carved magpie, 11cm.

\$4,000-\$5,000



122
和田白玉雕佛手瓜掛件

A well carved double chayotes pendant, 7.5cm.

\$1,000-\$2,000



123
白玉雕鵝筆架

A well carved jade goose brush rest, 10.5 cm.

\$3,000-\$5,000



124
藏文壓金板

A wood plank, of rectangular form, carved with Tibetan Buddhist scriptures in the center, five Buddha figures seated in dhyanasana on one of the flank, 66.6cm x 22cm.

\$500-\$1,000



125
三張老月份牌

Three pieces of Chinese old calendar pictures, advertising pictures for cloth and cigarette, two of them signed Zhiying as the representative painters of calendar picture at its peak time, 53cm x 69cm

\$300-\$500



126
"志在春秋" 瓷板掛屏

A porcelain plaque, with wood frame and hook, painted with figural scene, signed and inscribed with the artist seal, 38 cm x 24 cm.

\$500-\$800



127
山水人物瓷板畫

A famille rose porcelain plaque, of rectangular section, painted with riverside landscape with many figures, year of 1908, 38 cm x 25 cm.

\$1,500-\$2,500



128
清 故事瓷板掛屏

A porcelain plaque, of rectangular section, depicted figures in courtyard scene, with frame, 36cm x 24.5cm.

\$800-\$1,200



129

瓷板許褚戰馬超 仙槎 1916 年作品

A famille rose porcelain plaque, of rectangular section, painted with battle scene from the story of Three Kingdom with warriors and horses, signed by Xianchai and inscribed with the artist seal, 37.8cm x 25.5 cm.

\$5,000-\$10,000

130

" 老天利制 " 掐絲琺瑯蒜頭瓶

A vase with a bulbous body and long, slender neck with mouth in a garlic shape. The body is enameled overall with scrolling lotus roots and flowers, and base with incised four characters LaoTianLiZhi, height 30 cm.

\$5,000-\$8,000



131

清中期 霽藍釉鳳尾尊

A porcelain beaker vase, of globular body surmounted by a tall cylindrical neck and a wide flared rim, the exterior applied overall with a rich blue glaze, the base and rim white, height 41 cm, diameter 22 cm.

\$1,500-\$2,500



132
酸枝小姐椅

A pair of Suanzhi rosewood chairs, the back of the chair set with marble panels, intricately carved around with lotus and archaistic scrolls, 40 cm x 36.5 cm x 90 cm.

\$800-\$1,200



133
酸枝花几

A Suanzhi rosewood table, of two rectangular top surmounting the carved geometric apron above four straight legs, 84 cm x 29 cm x 97.5 cm.

\$800-\$1,200



134
酸枝嵌雲石半月台

A Suanzhi rosewood marble-inlaid demi-lune table, the top with some carved flowers, connected with four slender legs and united by three layers of shelves beneath, 81.5 cm x 40 cm x 88.5 cm.

\$1,000-\$1,500



135

136



135

丁衍壟 (1902-1978) 竹雀 鏡框 1973 年作品

Bamboo and sparrow, signed Ding Yanyong with one seal of the artist, a person in the preceding paragraph is a well-known Toronto painting artist Wingo Woo, ink on paper with frame, 109 cm x 30 cm without frame.

上款人為旅加畫家胡維道先生

\$2,000-\$2,500

136

胡維道 仿八大山人筆意 立軸

Imitation Badashanren, dated and signed Wingo Woo, with one seal of the artist ink and watercolour on paper, hanging scroll, 136cm x 41cm.

\$1,000-\$2,000



137
司徒奇 (1904-1997) 荷花 鏡心 / 石榴 鏡框

Lotus, titled and signed Situ Qi, with one seal of the artist, ink and watercolour on paper, 44.5 cm x 29 cm, Pomegranate, signed Situ Qi, with two seals of the artist, ink and watercolour on paper, with frame, 29 cm x 58cm.

\$500-\$800



138
鄭諤 (1918-2010) 花鳥 鏡心

Flowers and butterflies, titled and signed Kuang E, with three seals of the artist, ink and watercolour on paper, 136cm x 68.5cm.

\$500-\$1,000



139
伍彝生 (1929-2009) 引福圖 鏡心

Figure of Zhong Kui and a bat, signed and dated Wu Yisheng, with two seals of the artist, watercolour on paper, 92.5 cm x 59 cm.

\$500-\$1,000



140
龐諤 (1918-2010) 梅花 鏡心

Plum blossom, signed and dated Kuang E, with three seals of the artist, ink and watercolour on paper, 86cm x 44cm.

\$500-\$1,000



141
趙准旺 (1945 -) 山水斗方

Landscape, signed Zhao Zhunwang, with two seals of the artist, watercolour on paper, dimension 67cm x 67cm.

\$1,000-\$2,000



141A
歐豪年 (1935-) 兔 設色紙本 立軸

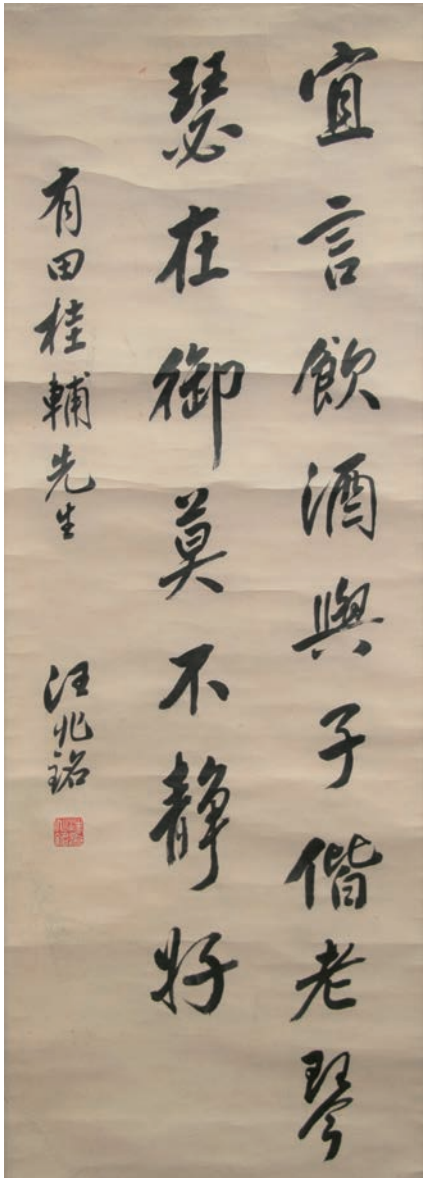
A black rabbit and a basket of carrots, signed Ou Haonian, with two seals of the artist, ink and watercolour on paper, hanging scroll, 68 cm x 42 cm.

\$600-\$1,000



142

143



142

李鑑 (1923-) 江南春色 設色紙本 鏡心

Landscape and boats, signed Li Jian, with three seals of the artist, watercolour on paper, 94.5 cm x 177cm without frame.

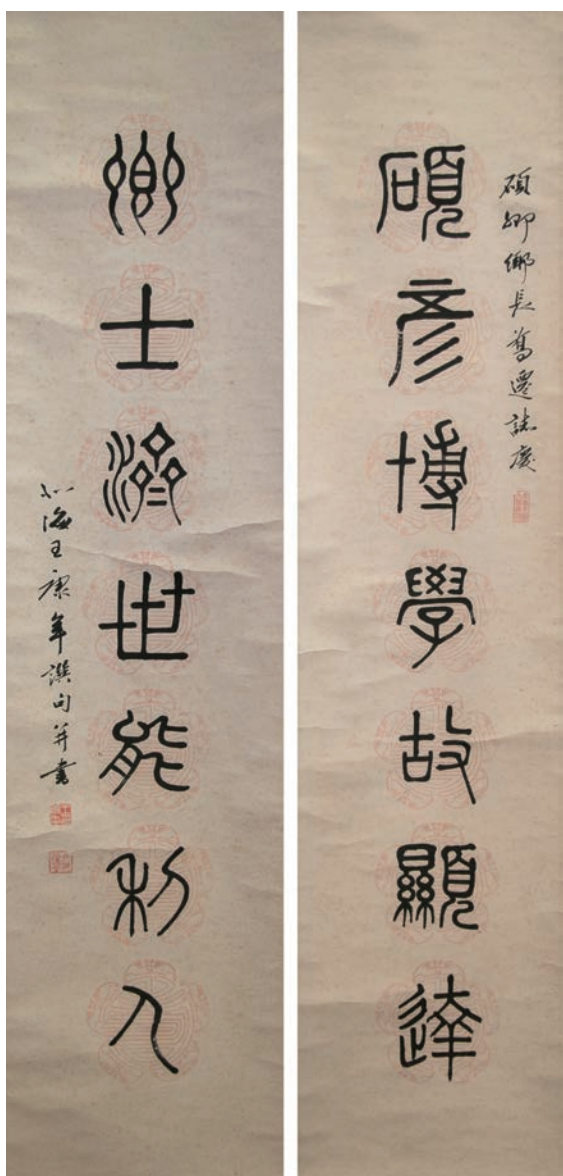
\$500-\$1,000

143

汪昭銘 (1883-1944) 書法 立軸

Calligraphy, signed Wang Zhaoming, with one seal of the artist, ink on paper, 100cm x 35.8cm.

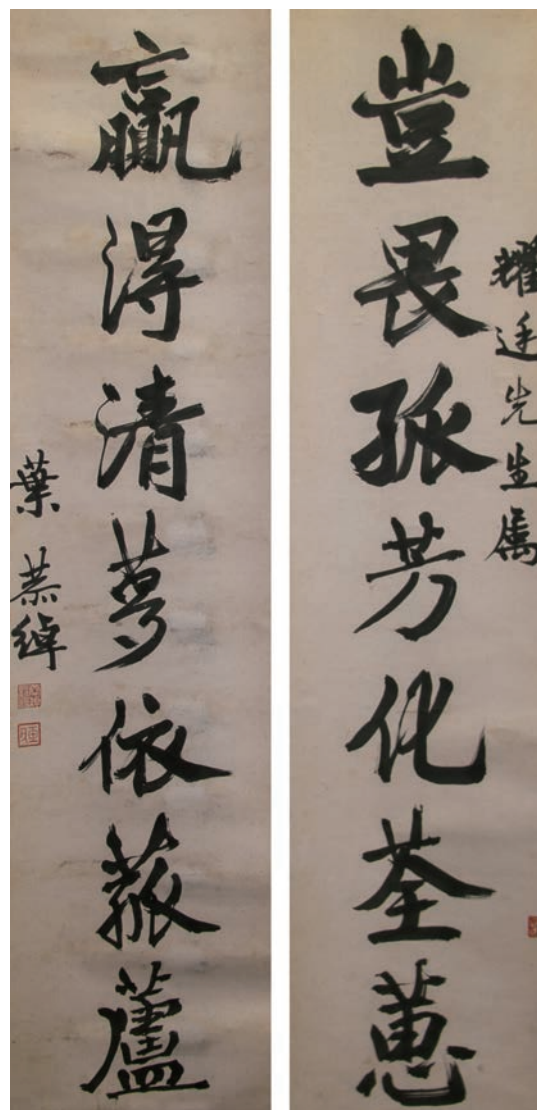
\$2,000-3,000



144
民國 王康年 對聯 立軸

Calligraphy couplet, signed Wang Kangnian, with three seals of the artist, ink on paper, 134cm x 33.5cm.

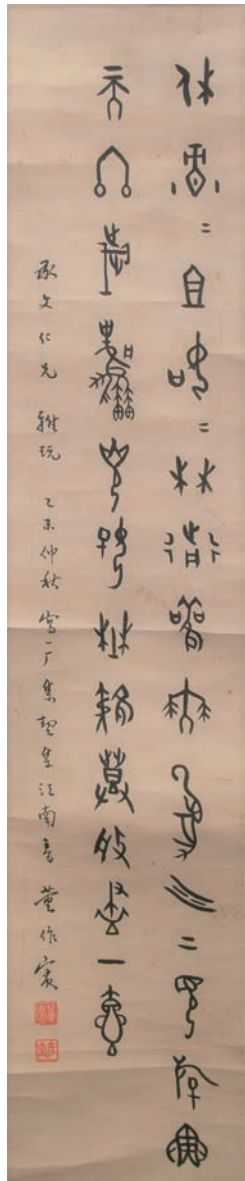
\$2,000-\$3,000



145
葉恭綽 (1881-1968) 對聯 立軸

Calligraphy couplet, signed Ye Gongchuo with three red seals of artist, ink on paper, hanging scroll, 130 cm x 31cm.

\$1,500-\$2,500



146
董作賓 (1895-1963) 書法 立軸

Calligraphy, signed Dong Zuobin, with two seals of the artist, ink on paper, 81 cm x 16 cm.

\$2,000-\$3,000



146A
林則徐 (1785-1850) 八言聯 立軸

Calligraphy couplet, signed Lin ZeXu. with two seals of the artist, ink on paper, hanging scroll, 164 cm x 35.5 cm each.

\$3,000-\$5,000



147
康熙 青花葫蘆瓶

A triple gourd vase with three globular sections surmounted by a tall waisted neck, painted with brilliant underglaze blue decoration of '100 antiques' motif and blossoming flowers on clear white porcelain, double circle mark to base, height 25.5 cm.

Provenance: A Toronto private collector purchased during 1970's from Sotheby's New York.

多倫多藏家七十年代購自 Sotheby's New York.

\$5,000-\$8,000



148
民國 淺絳彩瓷紙鎮 汪友棠，程煥文款

A pair of small Qianjiang porcelain paperweights painted with landscape scenes, Republic period, Cheng huanwen and Wang youtang style, 7.3 cm x 5.5 cm.

\$1,500-\$2,000



149
雕瓷印盒 大清乾隆款

A small square shaped porcelain carving box, the cover part decorated with a figure holding a frog on his hand standing among waves and flowers, the body part is decorated with butterflies and flowers reserved on turquoise blue, the interior is painted with watermelon green glaze, a six character Qianlong mark to base, height 8 cm.

\$500-\$800



150
清 青花三足爐

A blue and white porcelain censer, of compressed globular body supported by three cabriole feet, exterior painted with continuous landscape, unglazed base with three red quadrilateral mark, diameter 15 cm, height 8 cm.

\$500-\$800



151
青花九攢盤

A blue and white porcelain sweetmeat set, comprised of nine dishes, with an octagonal central dish surrounded by eight fan-shaped dishes, each painted with scrolling foliage, diameter 28.8 cm.

\$300-\$500



152
清 仿哥釉水洗 成化年制款

A crackle glazed water pot, of domed shape pierced with an aperture on top, the base with a four-character Chenghua mark, accompanied with wood stand, height 5 cm, width 8 cm.

\$500-\$1,000



153
民國 粉彩花鳥鳳尾尊

A famille rose beaker vase, the rounded baluster body surmounted by a tall cylindrical neck with a trumpet mouth, painted with yellowbirds perching on peach blossom trees, height 34 cm, diameter 18.7 cm.

\$300-\$500



154
景泰藍大盤

A cloisonne plate, featuring a basket of flowers and filled with floral design, designed curved edge, accompanied with a custom fitted wood stand, the base with a sticker "made in the People's Republic of China, diameter 38cm.

\$500-\$800



155
扇面兩幅 鏡框

Two fan paintings of calligraphy, with two seals of the artist, ink on fan paper, with frames, 38.5 cm x 61 cm.

\$500-\$1,000



156
陳秋草 (1906-1988) 水墨山水 成扇

Landscape, signed Chen Qiucao with one seal of the artist, ink and watercolor mounted on bamboo fan.

\$400-\$700

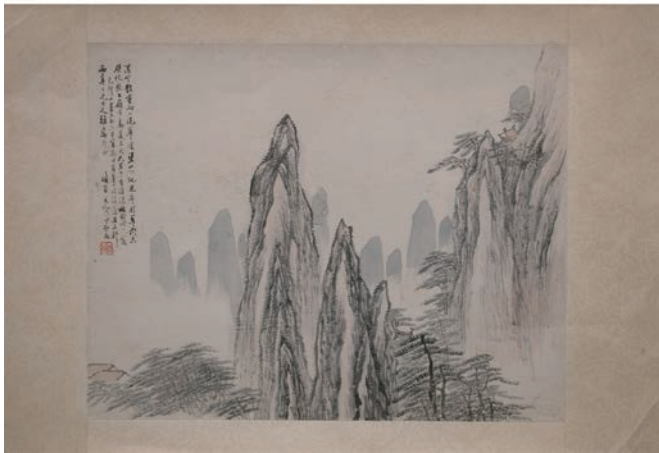


157

清 蒙而著

Mountain landscape, with one seal of the artist, watercolour on paper, 36 cm x 46 cm. Landscape, with one seal of the artist, watercolour on paper.

\$800-\$1,200



158

吳樹本 (1869-1938)/ 陳康候 (1866-1937)

A calligraphy on fan by Wu Shuben(1869-1938), with one seal of the artist, ink on fan paper. A fan painting of cicada, mantis, dragonfly and flowers by Chen Kanghou(1866-1937), with one seal of the artist, watercolor on fan paper.

\$800-\$1,200



159
汪英福 (1821-1850)

Man and two horses, signed Wang Yingfu, with one seal of the artist and a paper backing, watercolour on paper, dimension 51 cm x 17 cm.

\$400-\$600



160
沙馥 (1831-1906)

Figures, signed Sha Fu, with one seal of the artist, watercolour on gold-flecked fan paper, dimension 25 cm x 24 cm

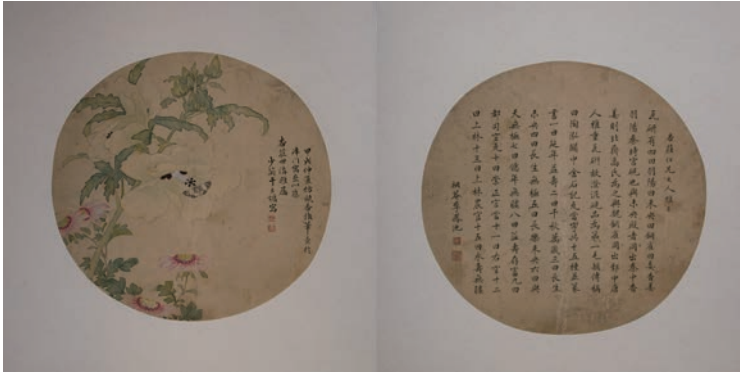
\$300-\$500



161
沙馥 (1831-1906)

Lady Figure by a tree, signed Sha Fu, with one seal of the artist, watercolour on silk, dimension 27 cm x 24 cm.

\$300-\$500



162
清末畫家 李鳳池 / 于立壩

A script calligraphy, signed Li Fengchi, with one seal of the artist, watercolour on circular silk fan, Butterfly and flowers, signed and dated Yu Liyong, with one seal of the artist, watercolour on circular silk fan, dimension 25.5cm x 25cm.

\$600-\$1,000



163
陳康侯 (1866-1937)

A script calligraphy painting by Chen Kanghou, ink on circular gold- flecked paper. A painting of figures resting under a tree, signed Chen Kanghou, with two seals of the artist, watercolour on circular silk, dimension 25cm x 24cm.

\$500-\$800



164
沙馥 (1831-1906)

Fishing man, signed Sha Fu, with one seal of the artist, watercolour on circular silk, dimension 23cm x 24 cm.

\$300-\$500



165
郵票 11 本

A variety collection of stamps from a private Hong Kong collector. Please contact auction house for more details.

\$4,000-\$6,000



166
佳士得 / 蘇富比圖錄

All together 20 catalogues about China ceramics and paintings dating from 1985 to 1995, including Christie's and Sotheby's.

\$300-\$500



166A
17 世紀 西藏大黑天神鑲金銅凸紋板

A gilt bronze repousse panel of Mahakala Tibet, 17th Century, 26 cm x 22.5 cm.

\$2,000-\$3,000



166B
19 世紀 尼泊爾獅面空行母銅像

A bronze figure of Simhavaktra, Nepal 19th century, height 17.5 cm.

\$500-\$1,000



167
翡翠戒指帶證書

One green jadeite ring, set with an oval-cut jadeite cabochon, accompanied with Grade A certificates issued by Hong Kong Gems Laboratory and Beijing Jewelry Quality Testing Center, jadeite diameter 11.4 mm, ring size 12.6 mm, weight 8 grams.
\$3,000-\$5,000



168
葉形翡翠掛件帶證書

A jadeite pendant, the 18K white gold frame set with a leaf-shaped jadeite pendant, of apple green tone, accompanied with Grade A certificates issued by Hong Kong Gems Laboratory and Beijing Jewelry Quality Testing Center, weight 10 grams.

\$500-\$1,000



169
靈芝翡翠掛件帶證書

A jadeite pendant, the 18K white gold frame set with a lingzhi-shaped jadeite pendant, of translucent spinach green tone, accompanied with Grade A certificates issued by Hong Kong Gems Laboratory and Beijing Jewelry Quality Testing Center, weight 9 grams.

\$1,000-\$1,500



170
翡翠手鐲帶證書

One rounded jadeite bangle, the stone of apple green colour, accompanied with Grade A certificates issued by Hong Kong Gems Laboratory and Beijing Jewelry Quality Testing Center, inner diameter 56.15 mm, outer diameter 78.6 mm, weight 70.5 grams.

\$5,000-\$10,000



171
翡翠彌勒項鍊帶證書

A jadeite pendant necklace, set with a Budai jadeite pendant, of translucent spinach green tone, accompanied with Grade A certificates issued by Hong Kong Gems Laboratory and Beijing Jewelry Quality Testing Center, weight 6.5 grams.

\$800-\$1,200



172
雕瓷粉彩人物一對

A pair of famille rose porcelain figures, depicting two ladies wearing long robes and holding books on their hands, height 24.5 cm.

\$200-\$300



173
青花小罐

A blue and white porcelain ginger jar, of ovoid body, decorated with three blooming lotus sprays and scrolling vines and a cover, height 12cm.

\$300-\$500



174
康熙年制四字款 博古紋青花瓶

A blue and white porcelain vase, well decorated with the '100 antiques' motif objects and leaves around the neck and body, four character Kangxi mark to base, height 30 cm.

\$300-\$400



175
玉雕花鳥擺件一對

A pair of celadon jade, carved with songbirds perching on blooming flowers, with fitted wood stands, height 29.5 cm.

\$400-\$500



176
玉雕駿馬一對

A pair of jade carved horses with fitted wood stands, height 7cm.

\$300-\$500



177
玉雕花鳥擺件

A celadon jade, carved in a morning glory shape with scrolling vines and leaves attach to it, two harvest flies are climbing on the vines and leaves, with fitted wood stand, height 17.5cm.

\$200-\$300



178
玉雕雙耳銜環三獸足香爐

A carved Chinese jade of hexagon body raised on three cabriole legs, the lid with a mythical kirin, two dragon mask handles surmounted on the body, displayed on a carved wood stand, 18.5 cm x 23 cm x 14.5 cm.

\$600-\$800



179
吉州窯梅瓶

A Jizhou meiping vase, of globular oval shape, short neck with narrow flat base and opening, the exterior decorated with two prerotted leaves, overall covered in mirror black glaze, the foot ring left unglazed, height 30 cm.

\$300-\$400



180
黃地如意耳扁瓶壺

A yellow ground porcelain moonflask, of flatten body with garlic form mouth, flanked with two thin curved handles, supported on a short square foot rim, painted with yellow glaze, height 30cm, diameter 19.5cm.

\$300-\$400



181
清 豆青釉地青花福壽紋碟

A celadon porcelain dish, with a shallow cavetto, decorated with special characters pattern and a longevity character in the center ,overall applied with pale sea-green glaze, a blue mark on the base, diameter 23.5cm.

\$200-\$300



182
雞嘴高古壺

A porcelain ewer, the bulbous body set with a chicken-head spout, an arched handle flanked on the rim to the shoulder, two hooks flanked on the shoulder, overall applied with black glaze and unglazed base, height 18.6 cm.

\$200-\$300



183
清末 青花人物筆筒

A blue and white brushpot, end of Qing dynasty, painted with a group of scholars, all in long robes, face vividly expressed, gathering together in one's house, height 15.5cm, diameter 13cm.

\$300-\$500



184
清 青花博古紋罐

A blue and white ginger jar decorated with precious objects in the '100 Antiques' motif, with a band collar around the neck, height 13cm, diameter 12 cm.

\$300-\$400



185
大清雍正年制款 花鳥瓶

A famille rose vase, the ovoid body rising from a short spreading foot to a waisted neck and flaring mouth, brightly painted with a group of magpies standing on a plum flower tree, six character Yongzheng mark to base, height 29 cm.

\$300-\$400



186
陶土蓋罐

An ancient pottery jar with wave shaped rim, height 18cm.

\$200-\$300

187
五彩大盤

The interior of the plate is decorated with a profusion of plants and flowers, including peach trees, daffodils, chrysanthemums, pumpkins, amidst scrolling foliage. There is one butterfly on each side of the plate, diameter 33.8cm.

\$300-\$400



188
銅胎琺瑯彩花卉盤

The plate is in an elegant flower-shaped form, the central medallion decorated with phoenix design pattern, the foliate rim decorated with eight set of peonies, all reserved on yellow enamelled ground, diameter 20 cm.

\$200-\$300



189
粉彩花鳥湯盆

A famille rose porcelain soup pot of the globular body flanked with four small and thin curved handles, painted with magpies perched on blossoming branches, diameter 27 cm.

\$300-\$400



190
窯變釉花邊碟一對

The shallow plate delicately potted with gently rounded sides molded with barbed foliate rim, all under a glaze of purple thinning to the rim, diameter 17cm.

\$300-\$400





191
古黃玉 玉虎

A jade carved tiger eating a fish, 8cm.

\$500-\$800



192
18K 金鑲沉香龍吊墜

An aloeswood carved dragon pendant with 18k gold, total weight for agarwood is 12.4 g, 7 cm.

\$4,000-\$5,000



193
壽山石印章 邱東霖製款

A shoushan stone seal with two eagles on top, 8 cm.

\$300-\$500



194
壽山石印章

A shoushan stone seal, 3.7 cm.

\$300-\$500



195
古黃玉 雙龍佩掛件

An openwork carving double dragons pendant, diameter 5.5 cm.

\$1,500-CA\$2,000



196
鈞窯藍釉花邊碗

A conical shape with foliate rim bowl, carried by a narrow foot, covered with a blue colored glaze with deep purple splash inside, diameter 17cm, height 8.4cm.

\$300-\$600



197
鈞窯罐

A Junyao glazed jar, of ovoid body with a tapered mouth rim supported on a short foot, covered in a blue glaze with a deep purple splash suffused with a network of crackles, the unglazed foot rim burnt a brown colour, height 19 cm, diameter 14 cm.

\$300-\$400



198
鈞窯藍釉紫斑單柄洗

A bowl shaped washer, one side of the rim is an extended petal-shaped along fold and there is a handle underneath of it. The interior of the washer is covered with purple splash over a blue glaze, diameter 21.5 cm, height 7 cm.

\$500-\$600



199
鈞窯小碗兩件

Two small bowls covered with blue glaze thinning to mushroom tone on the rims, the unglazed foot rims burnt a brown colour, diameter 7.5cm, height 4cm.

\$200-\$300



200
粉彩天球瓶一對 乾隆六字款

A globular body with rounded shoulder leading to straight neck, and a slightly concaved base. Decorated with reserves of baijixiang emblems amidst floral, leaf scrolling stems, and red dragons and clouds, six character Qianlong mark to the base, height 41cm, diameter 21cm.

\$300-\$400



201
仕女俑

A pottery female figure of wearing long robe in a standing position, height 30 cm.

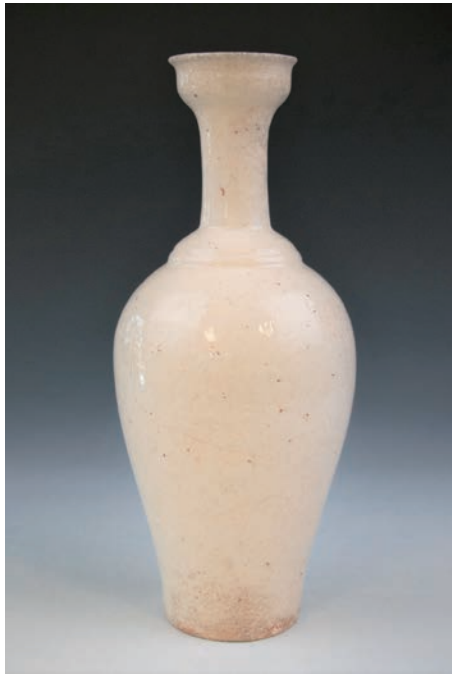
\$200-\$300



202
胡人騎獸俑

A pottery male figure of riding on a beast, height 25 cm.

\$200-\$300



203
定窯白瓷刻紋立瓶

The cylindrical neck with flaring rim emerging from the rounded shoulders, the sides gently taper towards a recessed foot, covered in white glaze, suffused with a network of crackles, decorated with carved scrolling vines and flowers, height 28 cm.

\$300-\$400



204
瓷筆架一對

One blue and vivid white flower glazed and one color painted brush rests, of crescent shape and are molded as five mountain peaks of graduated height, height 6 cm, width 9 cm.

\$200-\$300



205
三彩桃托盤

A peach is attached to the center of a wave-shaped rim plate and raised on a three semi-circular shaped legs, diameter 18.5cm.

\$200-\$300



206
雙圈款 缸豆紅玉壺春瓶

Elegantly potted with a pear-shaped body rising to a trumpet mouth, supported on a short foot, covered with a glaze of celadon green with grayish-pink infusion, double ring mark to the base, height 24 cm.

\$200-\$300



207
青瓷暗刻花紋碗

A celadon conical bowl, of steep rounded sides rising from a short foot, covered in an even layer of light greenish glaze, incised with a medallion of floral spray to the interior, diameter 16 cm.

\$200-\$300



208
鈞窯小水盂

A small waterpot, of globular body rising to a trumpet mouth supported on a very short foot, covered with a glaze of blue, height 9cm, diameter 9 cm.

\$200-\$300



209
哥釉小罐

A small ge glazed jar, of ovoid body with a tapered mouth rim, supported on a short foot, overall covered in a celadon glaze suffused with a matrix of dark brown crackles, height 9cm, diameter 8.5 cm.

\$200-\$300



210
白瓷雕塑

A white- yellowish porcelain with a network of crackles all of the body in a dimensional rectangle pavilion form, openwork carved with building and figures, 15cm x 12cm x 26cm.

\$300-\$500



211
花草紋水呈紙鎮

Two porcelain paper weights, of round shape with jagged edges, painted with floral pattern, diameter 6.5 cm.

\$200-\$300



212
花草紋水呈紙鎮

Two porcelain paper weights, of round shape with jagged edges, one painted with cobalt floral pattern, the other one covered with pale sea-green glaze, diameter 8 cm.

\$200-\$300



213
花草紋水呈紙鎮

Two porcelain paper weights, of round shape with jagged edges, one painted with cobalt floral and openwork flower carvings on the side, the other decorated with red butterfly and plant, diameter 9 cm.

\$200-\$300



214
紅釉小瓶

A copper red glazed vase, of globular body with a slender neck, raised on a low foot, the exterior covered in a lustrous deep red glaze thinning at the mouth, a red circle mark on the base, height 19.5 cm.

\$300-\$500



215
青花博古罐

A blue and white jar, of baluster body, the exterior painted with figures at leisure, height 13.5 cm, diameter 13.5 cm.

\$800-\$1,200



216
粉彩公雞花紋賞瓶

A famille rose vase of baluster form, painted in roosters and peony flowers, height 35.5cm.

\$300-\$500



217
藍釉小碗帶底座

A jun ware bowl, of round body rising from a short footring, covered overall with a blue glaze, russet on the mouth rim, accompanied with a fitted wood stand, diameter 7.5cm.

\$200-\$300



218
木雕一組

A set of wood carved figures, comprised of a Buddha carving, frog carving, a pair of cranes and a man figure, crane height 38.5 cm.

\$50-\$100

219
織錦三星加對聯掛屏

A Chinese style needlepoint tapestry, featuring embroidery on silk of figures and characters with theme of wishing one's longevity, height 114 cm, width 69 cm.

\$1,000-\$1,500

219





220
紫檀雕彌勒佛

Depicting the seated Buddha, dressing in long robe and reveling his ample belly, height 6cm, width 15 cm.

\$400-\$700



221
木雕觀音

A standing figure of Guanyin, dressed in long robe, height 26.5 cm.

\$500-\$700



222
銅佛像

A large bronze sculpture of seated Buddha, the hands in dharmachakra mudra, the serene face surmounted by a foliate tiara, height 40cm.

\$500-\$1,000



223
銅獅鈕印章

A bronze square seal chop, depicted a seat guard lion, incised two-character on the base, height 5cm.

\$200-\$400

TERMS & CONDITIONS

STUNNING ARTS GALLERY AND AUCTION INC AS AGENT

The lots listed in this catalog will be offered by Stunning Arts Gallery and Auction Inc as owner or as agent for consignor(s) subject to the following terms and conditions. By bidding at auction you agree to be bound by these Conditions of Sale.

BEFORE THE AUCTION

Prospective buyers are strongly advised to personally examine any property in which they are interested before the auction takes place. All lots are sold "AS IS" and without recourse and neither Stunning Arts Gallery and Auction Inc nor its consignor(s) makes any warranties or representations, express or implied with respect to such lots. No statement, whether written or oral, and whether made in catalog, or in supplements to the catalog, an advertisement, a bill of sale, a saleroom posting or announcement, the remarks of an auctioneer, or otherwise, shall be deemed to create any warranty, representation or assumption of liability. It is the responsibility of prospective purchasers to inspect or have inspected each lot upon which they wish to bid, relying upon their own advisers, and to bid accordingly.

BIDDING IN THE SALE

Refusal of Admission Stunning Arts Gallery and Auction Inc has the right, at our complete discretion, to refuse admission to the premises or participation in any auction and to reject any bid.

Registration before Bidding

A prospective buyer must complete and sign a registration form and provide identification before bidding. We require bank or other financial references.

Bidding as Principal

To bid in person, the bidder will need to register for and collect a numbered paddle before the auction begins. Proof of identity will be required. Should you be the successful buyer of a lot, please ensure that your paddle can be seen by the auctioneer and that it is your number that is called out. All lots sold will be invoiced to the name and address in which the paddle has been registered and cannot be transferred to other names and addresses. When making a bid, a bidder is accepting personal liability to pay the purchase price, including the buyer's premium, all applicable taxes and all other applicable charges.

Absentee Bids

If the bidder cannot attend the auction, we will be happy to execute written bids on your behalf. Absentee bids in writing must be submitted to Stunning Arts Gallery and Auction Inc at least 24 hours prior to the sale by letter or fax. In the event of identical bids, the earliest received will take precedence.

Reserves

Each lot may be subject to an unpublished reserve which may be changed at any time by agreement between the auctioneer and the consignor.

Auctioneer's Discretion

The auctioneer has the right at his or her absolute and sole discretion to refuse any bid, to advance the bidding in such a manner as he or she may decide, to withdraw any lot, and in the case of error or dispute, and whether during or after the sale, to determine the successful bidder, to continue the bidding, to cancel the sale or to re-offer and resell the item in dispute. If any dispute arises after the sale, our sale record is conclusive.

Successful Bid

The highest bidder acknowledged by the auctioneer will be the purchaser. In the case of a tie bid, the winning bidder will be determined by the auctioneer at his or her sole discretion. In the event of a dispute between bidders, the auctioneer has final discretion to determine the successful bidder or to re-offer the lot in dispute.

AFTER THE SALE

Buyer's Premium

In addition to the hammer price, the buyer agrees to pay Stunning

Arts Gallery and Auction Inc a buyer's premium and the applicable sales tax added to the final total. Each lot sold is subject to a premium of 20% of the successful bid price of each lot up to and including \$50,000 and 18% on any amount in excess of \$50,000 as part of the purchase price. Online bidding is subject to a 23% buyers premium.

Deposit

The contact information provided by the purchase must be accurate and true. The auctioneer reserves the right to request a deposit to be provided before bidding and will be used against any and all purchases made at the auction.

Taxes

Unless exempted by law, the buyer is required to pay HST on the total purchase price including buyer's premium. For international buyers, taxes are not applicable when purchases are shipped out of country. Items shipped out of Ontario, the buyer is required to pay taxes as per the tax status of that province, whether is HST or GST.

Payment

Immediately after the purchase of a lot, the buyer shall pay or undertake to the satisfaction of the auctioneer with respect to payment of the whole or any part of the purchase price requested by the auctioneer, failing which the auctioneer in his sole discretion may cancel the sale, with or without re-offering the item for sale.

The buyer shall pay for all lots within 7 business days from the date of the sale, after which a late charge of 2% per month on the total invoice may be incurred or the auctioneer, in his sole discretion, may cancel the sale. The buyer shall not become the owner of the lot until paid for in full. Items must be removed within 10 days from the date of sale, after which storage charges may be incurred.

Each lot purchased, unless the sale is cancelled as above, shall be held by the auctioneer at his premises or at a public warehouse at the sole risk of the buyer until fully paid for and take away.

Payment for purchases must be by cash, INTERAC direct debit (Canadian clients in person only), certified cheque (U.S. and Overseas not applicable), bank draft, electronic transfer (fee applies), and VISA or MASTER or AMERICAN EXPRESS card.

Should the item not be paid for within the time limit stated, the auctioneer, without limitation of the rights of the consignor and the auctioneer against the buyer, may resell any of the articles affected.

SHIPPING

Shipping is provided at the buyers' expense. Stunning Arts Gallery will provide a list of shippers. The purchased items will be released with the buyers' written consent and until payment has been made in full. Shipping, packing and handling is at the entire risk of the buyer. SAG will have no liability of any loss or damage to such items.



Stunning Arts Gallery & Auction

20 Steelcase Road W., #1A

Markham, ON L3R 1B2

Phone/Fax: 905-604-8288

Email: stunningartsgallery@gmail.com

ABSENTEE/TELEPHONE BIDDING COMMISSIONS FORM

电话委托竞拍表格

Name: 名字:			Telephone Bid <input type="checkbox"/>	Absentee Bid <input type="checkbox"/>
Phone: 联系电话:	Email: 电子邮件:			
Address: 地址:				
City: 城市:	Province: 省:	Postal Code: 邮编:		
Credit Card Number : 信用卡号码 :		Expiry Date : 到期日期 :		
Name on Card: 持卡人姓名 :		CVV: 卡后三位安全码:		
Billing Address (if different): 账单邮寄地址:				

LOT NUMBER	DESCRIPTION	MAXIMUM BID

All absentee bids will be accepted until 5 hours before the beginning of the auction. Phone lines are limited and telephone bids are taken on a first come, first serve basis for each lot. If all the phone lines are reserved for a lot you requested, you will be contacted in order for you to leave an absentee commission bid. While we are pleased to offer telephone bidding as a service to our clients, and take great care in their commission, we will not be held responsible for any errors or omissions. All sales are subjected to a 20% buyer's premium added to the hammer price, 18% on any bids over CAD \$ 50,000. I request Stunning arts gallery & auction to execute these bids on my behalf and I agreed to the auction terms and condition.

Signature 签名	Print Name 正楷签名	Date 日期
-----------------	--------------------	------------

Please send all completed forms to Stunning arts gallery & auction by mail, email or fax provided above.