

001

001
紫砂仿生猪对 带款
PAIR OF CHINESE ZISHA PIGS

The group comprises of two vividly carved pigs, both covered in reddish-brown color, with a four-character seal on the base, each with a drilled hole on the back. H: 11.2 cm

Estimate CA\$300 - \$500



002

002
玉兽把件
CHINESE ARCHASTIC BEAST CARVING PENDANT

A beast carving with perforation drilled through the body attached with a string, the stone of white to beige colour with russet inclusions. 6.3 x 4.4 x 2.5 cm

Estimate CA\$200 - \$400



003

003
清中期 出口青花盘
CHINESE EXPORT BLUE AND WHITE PLATE, MID QING DYNASTY

A blue and white plate, of short round sides painted on the center plants and birds encircled by two circular rings and decorated with a flower band to the barbed rim. D: 22.7 cm

Estimate CA\$200 - \$400



004

004
青花绣球花包袱瓶 《大清乾隆年制》款
CHINESE BLUE AND WHITE VASE, QIANLONG MARK

A blue and white porcelain vase, of ovoid body connecting to a foliated mouth rim, the neck decorated with a tied sash, overall painted with flower medallions, reserved on crackle-glazed ground, the base inscribed with a six-character Qianlong mark, pierced at the centre and repaired afterwards, the mouth rim is chipped and repaired as well. H: 34 cm

Estimate CA\$500 - \$800



005

005
康熙 青花花卉纹茶壶
CHINESE BLUE AND WHITE TEAPOT, KANGXI PERIOD

A blue and white teapot with cover, of pear shape body flanked by a handle and a spout, detailly painted with flowers drawings orbiting the body. H: 9.2 cm

Estimate CA\$400 - \$600

006
 十九世纪 铜钟酸枝嵌银连座
 CHINESE BRONZE BELL WITH SUANZI WOOD CARVED STAND,
 19TH C.

A bronze bell, accompanied with a carved figures wood stand.
 H: 48 cm

Estimate CA\$800 - \$1,000



006



007

007
 铜佛像
 CHINESE BRONZE FIGURE OF A BUDDHA

A Buddha figure seated in royal ease on top of a rock above the water pattern foundation, base hollowed out. 16 x 12.6 x 25.5 cm

Estimate CA\$400 - \$600



008

008
 北方斯基特人金饰牌
 NORTHERN SCYTHIA STYLE
 GOLD PLATE

A circular head portrait gold plate of Northern Scythia style.
 D: 5.1 cm, 9 grams

Estimate CA\$600 - \$800



009

009
 硬木雕荷叶墨床
 CHINESE HARDWOOD LOTUS LEAF INK
 STICK REST

Carved in openwork lotus leaves and lotus buds resting on four lotus root framed base. 12.5 x 8 x 3.5 cm

Estimate CA\$300 - \$500



010

010
 水晶瑞兽摆件 连座
 CHINESE CRYSTAL BEAST CARVING WITH
 STAND

A crystal carving with good transparency, depicting a small Pixiu behind another Pixiu with coin pattern ball under its paw, carved with precision scrolling furs patterns at the back, accompanied with a fitted wood stand. 10.5 x 6.5 x 5 cm

Estimate CA\$400 - \$600



011

011
 清 青白玉童子大象摆件
 CHINESE CELADON JADE ELEPHANT
 CARVING, QING DYNASTY

A detailedly carved stone rendered a child on an elephant holding a Ruyi scepter terminated with a fish, both the elephant and the boy features eyes downcast with a smile, the stone in smooth polished white color punctuated with light tinged areas of rust. H: 9.5 cm

Estimate CA\$600 - \$800



012

012
民国 粉彩笑佛雕瓷
CHINESE FAMILLE-ROSE BUDDHA FIGURE OF MAITREYA,
REPUBLIC PERIOD

A famille-rose figure of Buddha seated in royal ease, holding a string of prayer beads in his right hand, with chest open wearing Shou character clothing, surmounted on a patterned stand. H: 36 cm

Estimate CA\$800 - \$1,000



013

013
白玉童子戏牛把件
CHINESE WHITE JADE BOY AND BUFFALO CARVING

A finely carved jade portraying a boy in recumbent leaning against a kneeling buffalo while holding one of the horn, the polished stone of creamy white with russet streaks, accompanied with a cushioned box. 4.5 x 9.5 x 4 cm

Estimate CA\$2,000 - \$3,000



014

014
玉花摆件
CHINESE WHITE JADE FLOWER CARVING

A flower carving with perforation drilled at the back, the stone of pale white tone punctuated with light tinged areas of russet inclusion. 5 x 4.5 x 2.7 cm

Estimate CA\$200 - \$400



015

015
瘿木笔筒
CHINESE BURLWOOD BRUSHPOT

A heavy brush pot hollowed in the center, the exterior with a tree trunk resemblance form gnarled with small recessed holes, all on the natural attractive wood grain. D:14.5 cm, H:16 cm

Estimate CA\$800 - \$1,200



016

016
玉雕花牌 带座
CHINESE CARVED JADE 'FLORAL' PLAQUE WITH STAND

A lotus medallion plaque carved with dented petals and scrolling patterns, on the reverse side two perforations in the center, the stone of pale celadon with white inclusions, all supported on a fitted wood stand. D: 7.8cm, Thickness 7.18 mm

Estimate CA\$300 - \$500

017
 粉彩人物瓶对 (灯)
 PAIR OF CHINESE FAMILLE-ROSE VASES
 (LAMP)

A pair of famille-rose lamps, depicting four-lobed Ruyi framed with boys inside, applied all over with scrolling flower on a yellow background, all mounted on a wood stand as a lamp. H: 72 cm

Estimate CA\$200 - \$400



017



018

018
 清 粉彩无双谱人物花盆对
 PAIR OF CHINESE FAMILLE-ROSE JARDINIERS,
 QING DYNASTY

A pair of flower pots of circle section tapering down to a straight foot, painted on the exterior various figures signed with name and title, applied white glazed from the exter to mid interior, unglazed basereveal the buff-ware with a drilled hole. D: 36.7 cm, H: 33.8 cm

Estimate CA\$1,500 - \$2,500



019

019
 民国 粉彩六角开光帽筒一对
 PAIR OF CHINESE FAMILLE-ROSE HAT STANDS, REPUBLIC
 PERIOD

A pair of hexagon cylinder, each with six four-lobe-Ruyi shaped cutouts on the top-vers-bottom correspondence, the exterior molded with arbitrary objects painted on the colored background of yellow and black and blue, white glazed interior, the base with six character mark and seal. H: 37 cm

Estimate CA\$300 - \$500



020

020
 晚清 酸枝对几
 PAIR OF RED SUANZHI WOOD STANDS, LATE QING DYNASTY

A pair of stands, elegantly carved with five wristed cabriole legs supporting a circular top, attached to the bottom a bent ring, the warmly painted natural wood strikingly figured with attractive grain pattern of variegated brown streaks. D: 16.5 cm; H: 19.5 cm

Estimate CA\$500 - \$800



021

021
粉彩八吉祥纹茶杯对《大清乾隆年制》款
PAIR OF FAMILLE-ROSE 'BAJIXIANG' CUPS, QIANLONG MARK

A pair of teacups, of upside-down bell shape supported on a straight foot, painted on the body four ribboned items, with a key-fret band on the rim and a ruyi band to the foot ring, the base with a six-character Qianlong mark and seal. D: 8.5 cm, H: 6.2 cm (each)

Estimate CA\$600 - \$800



022

022
寿桃玉牌 带座
CHINESE CARVED JADE 'PEACH' PLAQUE WITH STAND

A plaque carved in low relief openwork style, depicting peaches encircled by a rectangular dotted frame polished and incised with detail on the front side, the stone of translucent white, all supported on a fitted wood stand. 7.5 x 5.9 x 0.42 cm

Estimate CA\$200 - \$300



023

023
康熙 瓷笔架山
CHINESE PORCELAIN BRUSH REST, KANGXI PERIOD

A porcelain brush holder, depicting a mouse beneath curling tendrils attached to a oval pond. L: 10.5 cm, H: 7.5 cm

Provenance: From E&J Frankel, Ltd. located in New York. Established in 1967, is one of the oldest galleries in the United States specializing in Asian Art.

Estimate CA\$600 - \$800

024
玉件一组五件
GROUP OF FIVE CHINESE JADE OBJECTS



024

A set of five items: a crouching horse, the stone of white tone with apple-green incisions, a cicada carving of white tone with russet inclusions, a dark green cup with a wood stand, two bone carved bangle. Bangle inner diameter 6.5 cm

Estimate CA\$300 - \$500

025
民国 酸枝圆桌带四圆凳
A SET OF SUANZHI TABLE AND FOUR STOOLS, REPUBLIC PERIOD

A set of five suanzhi furniture: a circular table with marble-inlaid top and four marble-inlaid round stools. Table D: 80.5, H: 79 cm; Chairs (x4) D: 35, H: 45.5 cm

Estimate CA\$1,500 - \$2,500



025



026

026

晚清 墨彩开口杯一套四件 连盒

A SET OF FOUR CHINESE GRISAILLE CUPS WITH BOX, LATE QING DYNASTY

A set of four cups in a square section with four cut out corners, each painted with one of the four gentlemen of the flowers (plum, orchid, bamboo chrysanthemum) with poem and mark on the exterior, the base incised with four character mark, accompanied with a bamboo box with four cushioned compartments. Each 5.2 x 5.2 x 4.5 cm

Estimate CA\$400 - \$600

027

玉把件一组三件

SET OF THREE CHINESE JADE CARVINGS

A set of three carvings: a buffalo carving carrying a gourd at the back; a dragon carving with bifurcated leafy tail; an elongated ovoid section box. L: 7.4 cm; L: 6.2 cm; L: 6 cm

Estimate CA\$300 - \$500



027



028

028

玉雕件一组三件

SET OF THREE CHINESE ARCHAISTIC JADE CARVINGS

A set of three items: a rabbit carving, the stone of overall russet tone with black lines, with one of the rabbit ear chopped off; a carved plaque, the stone of white and grey with areas resembling calcification; a seal surmounted with a beast carving, the stone of moss green tone with russet inclusions. 8.2 x 4 x 2.5 cm; 5.2 x 2.5 x 0.9 cm; 5 x 3.8 x 1.8 cm

Estimate CA\$200 - \$300



029

029

琥珀饰品两件

SET OF AMBER PENDANT AND NECKLACE

A set of two amber accessories: a necklace, composed of graduated geometric flattened beads, the stone of clear and yellow tone with dark inclusions trapped; a triangular shaped agate pendant mounted below a tubular attachment, the stone of orange tone with trapped debris. Necklace Thickness 6.57 mm, 17 grams; Pendant 3 x 4 cm Thickness 7.08 mm, 14 grams

Estimate CA\$600 - \$1,000

030

清 粉彩 '花鸟人物' 鸟食罐两件

SET OF TWO CHINESE-FAMILLE ROSE BIRD FEEDERS, QING DYNASTY

A set of two bird feeders: of a globular form to a pointed foot, the shoulder connected attached with a small handle; and a globular form with a flat base, with a small handle attached at the midsection. H: 4.3 cm; H: 4.7 cm

Estimate CA\$300 - \$500



030

031

绿松石佛雕两件

SET OF TWO CHINESE TURQUOISE BUDDHA CARVINGS

A set of two Buddha carving: a laughing Buddha with right hand resting on his upturned leg; a seated Buddha carving with left hand resting on his leg. H: 3.5 cm; H: 6.5 cm

Estimate CA\$200 - \$400



031



032

032
宋 青瓷小碟对
PAIR OF CHINESE CELADON GLAZE DISHES, SONG DYNASTY

A set of two dishes, the round sides rising to an everted unglazed rim, covered allover with celadon crackle glazed, the buff-base with four character mark; small round sides rising to a slightly barbed rim, covered allover with a celadon crackle glazed, the base with buff glazed. D: 14.2 cm; D:11.8 cm

Estimate CA\$200 - \$400

033
粉彩人物盘、粉彩茶壶两件
SET OF CHINESE FAMILLE-ROSE PLATE AND TEAPOT

A set of two famille-rose pottery ware: a plate with figures and coins painted on the interior; a teapot painted with greenery and insects. Plate D: 20 cm; Teapot H: 11.5 cm

Estimate CA\$400 - \$600



033

034
晚清 粉彩、青花盖罐两件
SET OF CHINESE FAMILLE-ROSE, BLUE AND WHITE JARS, LATE QING

A set of two jars: a famille-rose jar, painted with flowers and bird and calligraphy, the base incised with a seal, accompanied with a cover; a blue and white jar, painted with figures with rock and pine, accompanied with a cover. H:11.7 cm; H: 13.7 cm

Estimate CA\$200 - \$400



034



035

035
琥珀耳饰、挂件
SET OF AMBER EARRINGS AND PENDANT

A set of two pieces of jewelry include: an amber pendant with residues retained laid in a leaf-shaped frame; and a pair of amber drop earrings. Pendant: 3.7cm x 3.2cm 16 gram; 3 grams each

Estimate CA\$500 - \$800



036
玉璧两件
TWO CHINESE ARCHAISTIC BI DISC

A set of two plain bi disc plaque: a plaque, the stone of moss green tone; a plaque, the stone of white tone with black inclusion. D: 41.63 mm, Thickness 4.65; D: 38.09 mm, Thickness 4.22 mm

Estimate CA\$200 - \$400



037
古玉暗刻璧牌两个
TWO CHINESE JADE INCISED ARCHAISTIC BI DISC

A set of two plaque of bi disc form, one with bamboo and lotus leave incisions, the stone of overall pale white tone; the second disc incised with flower and patterns on the reverse side, the stone of pale white tone, with moss green and russet highlights. D: 53.36 mm, Thickness: 7.7 mm; D: 55.00 mm, Thickness: 6.12 mm

Estimate CA\$200 - \$400



038
银器首饰两件
GROUP OF TWO JEWELRY AND SILVER WARE

A set of two silver items, a peach shape silver box and cover incised with a spreading phoenix and curling lappets; a pink stone pendant mounted on three levels of scrolling bands. L: 4.5 cm, 39 grams; L: 5 cm, 24 grams

Estimate CA\$300 - \$500



039
晚清 出口锡制茶叶罐对
A PAIR OF PEWTER TEA CADDIES AND COVER, LATE QING DYNASTY

A set of two tea caddies, of four-lobed-ruyi section supported on four bracket legs on the corners, rising to a rounded shoulder with an everted edge to a cylindrical mouth opening, accompanied with fitted covers. 19.5 x 14 x 36.5 cm (each with cover)

Estimate CA\$200 - \$400



040
烧蓝挂链
CLOISSONNE ENAMEL BUTTERFLY NECKLACE

A silver-tone chain with four small detailed decorations, supporting a colorful cloisonné enamel butterfly pendant suspending two small drops. Pendant: 6.2 wide, 55 cm long, 81 grams

Estimate CA\$500 - \$800



041
翡翠挂链
JADEITE LOTUS BLOSSOM NECKLACE

A silver-tone chain with four small detailed decorations, supporting a lotus jadeite pendant with bilateral lotus from incisions suspending three long chains and sword design attachments. 52cm long, pendant 7.6cm wide, 72 grams

Estimate CA\$500 - \$800



042

042
 民国 酸枝木方几
 CHINESE RED SUANZHI CABINET, REPUBLIC PERIOD

A small suanzhi cabinet, Republic period, with square shaped top, a drawer is mounted under above associated legs, 28 x 28 x 53 cm

Estimate CA\$400 - \$700



043

043
 蜜蜡项链
 CHINESE AMBER BEADED NECKLACE

A strand of overall honey-orange hue amber beads with some interesting russet mark trapped, divided into three groups of 11 by two flattened beads, attached at the back a gourd-shaped fotouta. 33 beads, 46 gram, L:22cm

Estimate CA\$300 - \$500



044

044
 西藏普巴杵
 TIBET IRON AND BRONZE PHURBA

A three-sided stake, traditionally associated Vedic traditions, carved with three fierce bull faces with fangs bared plaited at the top. 22 cm long

Estimate CA\$300 - \$500



045

045
 硬木镶嵌贝雕笔筒
 CHINESE MOTHER-OF-PEARL INLAID HARDWOOD BRUSH POT

A tubular brush pot with a perforation and wood stopper on the base featured bird and scenery intricately carved on shells in various tone on attractive natural wood grains. D: 14.5cm, H:16cm

Estimate CA\$600 - \$800



046

046
 玛瑙雕牛摆件 连座
 CHINESE AGATE BUFFALO CARVING WITH STAND

A vivid carving of a buffalo nursing two babies, the polished stone of good transparency in pale celadon to copper red tone with interesting dark spots, accompanied with a fitted wood stand. 12.2 x 8.6 x 5 cm

Estimate CA\$400 - \$600



047

047
 布袋佛紫檀坐像
 FINELY CARVED CHINESE ZITAN BUDAI FIGURE

A well carved as a seated Budai, the laughing Buddha wearing loose robes draped over his corpulent body, his chest and large stomach bare, his left hand resting on his upturned leg, his head bald with a round and broadsmiling face, the wood of rich reddish-brown color. 16 x 10 x 6.5 cm

Estimate CA\$500 - \$800



048

048
荷叶玉笔洗
PAIR OF LOTUS LEAF BRUSH WASHERS

A pair organic form jade brush wash in lotus leaf resemblance, detailedly carved with stems incised at the back, the stone of celadon tone with russet inclusions, note one of the jade brush washers with lines. 15.5 - 16 cm wide

Purchased statement from Legor de Saint Hippolyte, auctioneer at Iegor Hotel des Encas in Montreal. Provenance: Lot 0582 of the October 19th, 1995 auction catalog on behalf of the Saydie Bronfman Foundation.

Estimate CA\$800 - \$1,200



049

049
执手玉杯 带底座
CHINESE NEPHRITE TEACUP WITH
CARVED HANDLES

In overall a greenish tone, elegantly carved round cup with the handle attached, accompanied with a fitted wood stand. H: 3.8 cm

Purchased statement from Legor de Saint Hippolyte, auctioneer at Iegor Hotel des Encas in Montreal. Provenance: Lot 0584 of the October 19th, 1995 auction catalog on behalf of the Saydie Bronfman Foundation.

Estimate CA\$800 - \$1,200



050

050
十九世纪 双耳玉香炉 带座盖
CHINESE CELADON JADE INCENSE BURNER, 19TH C.

A double handled bowl with Baku head handles, the body with masks and trigrams in a mottled oily greyish stone with wood cover and nephrite finial. W: 14.5 cm

Purchased statement from Legor de Saint Hippolyte, auctioneer at Iegor Hotel des Encas in Montreal. Provenance: Lot 0578 of the October 19th, 1995 auction catalog on behalf of the Saydie Bronfman Foundation.

Estimate CA\$2,000 - \$4,000



051

051
清 刺绣挂件
CHINESE EMBROIDERY PIECE, QING DYNASTY

An embroidery silk piece with dragon and tiger against a black background, with an octagonal golden frame. L: 30 cm

Estimate CA\$300 - \$500



052

052
玉金鱼把件
CHINESE WHITE JADE GOLDFISH PENDANT

An exquisite goldfish carving with three perforations on the tail, the stone of pale white tone with white and russet inclusion. 3.7 x 3 x 1.4 cm

Estimate CA\$300 - \$600



053

053
吉庆有鱼玉佩
CHINESE WHITE JADE 'FISH' PLAQUE

An openwork carved plaque in symmetry and bilateral depicting 'Ji' character between two fishes and under a V-shaped band on the smoothly polished white stone. 6.9 cm x 4.9 cm x 4.16mm

Estimate CA\$400 - \$600



054

054
 溥心畬 (1896-1963) 书法对联 挂轴 水墨纸本
 PU XINYU (1896-1963) CALLIGRAPHY COUPLET

Calligraphy, ink on gold-flecked paper, signed by the artist with three artist's seals, a pair of hanging scrolls. 64.3 x 11.5 cm

Estimate CA\$2,000 - \$4,000

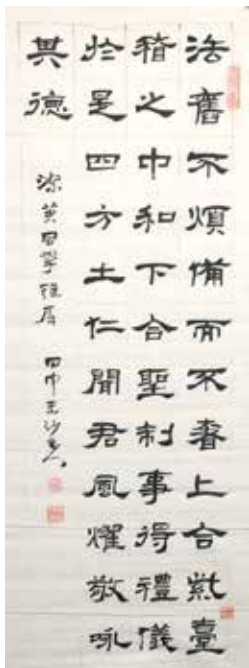


055

055
 冯汉 (1875-1950) 书法对联
 FENG HAN (1875-1950), CALLIGRAPHY COUPLET

Calligraphy. Ink on paper. Signed, with seven seals. 30.5 x 144 cm (each)

Estimate CA\$8,000 - \$10,000



056

056
 冯汉 (1879-1950) 书法条幅
 FENG HAN (1875-1950),
 CALLIGRAPHY BANNER

Calligraphy. Ink on paper. Signed, with three seals. 33.7 x 88.2 cm

Estimate CA\$2,000 - \$3,000



057

057
 冯汉 (1879-1950) 书法扇面
 FENG HAN (1875-1950), FAN

Calligraphy. Ink on paper. Signed, with two seals of the artist.

Estimate CA\$800 - \$1,200



058

058
出口创汇期 珊瑚胸针
18K CORAL PONEY PENDANT, EXPORT PERIOD

Carved as a blossoming poney mounted in an 18K gold frame with brooch hook and a hanging bail at the back, the stone of orange color with white inclusions, accompanied with a cushioned box. L: 5.5 cm, 23 grams

Estimate CA\$1,200 - \$1,800



059

059
翡翠 18K 金镶钻胸针
JADEITE AND 7 DIAMONDS INLAID 18K GOLD BROOCH

Carved as lotus leaves in openwork style bordered and surmounted in 18 karat gold set with 7 diamonds, accompanied with a cushioned box. 5.7 x 3.6 cm, 14 grams

Estimate CA\$600 - \$800



060

060
端石太平有象宝瓶砚
CHINESE 'DUAN' INKSTONE

Carved with Ruyi key-fret band with "Shou" character and bats, the reverse side with apocryphal inscriptions. L: 23.3 cm, Thickness 2.3 cm

Estimate CA\$100 - \$200



061

061
玉神兽把件
CHINESE WHITE JADE BEASTS CARVING

Carved with two antique beasts in pursuit of a ball, each biting on the rope attached to the ball, the stone of light brown tone on the top and getting darker at the bottom. H: 3 cm

Estimate CA\$1,000 - \$1,200



062

062
 烧蓝拉丝翡翠手镯
 ENAMELED JADEITE BRACELET

Composed a strand of five bent rectangular plaque cloisonné enamel with blue flowers, each panel mounted with hemispherical shape jadeite. L:16.5 cm, 36 grams

Estimate CA\$400 - \$700

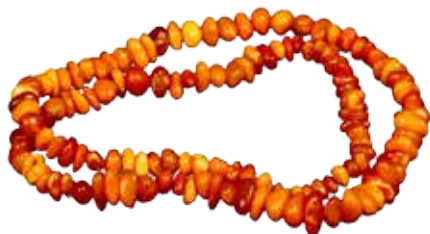


063

063
 琥珀项链、耳环
 GROUP OF AMBER NECKLACE AND EARRINGS

Comprised a set of a graduated cube beaded necklace and a pair of matching earrings, the stone of transparent yellow with trapped russet debris flows on the top. Necklace: 52 beads, L: 64 cm, 104 grams; Earring (each): 2 beads, L: 2.4 cm, 6 grams

Estimate CA\$600 - \$1,000



064

064
 蜜蜡项链
 CHINESE AMBER BEADED CHAIN

Comprised a strand of irregular pebble form beads, the stone of various transparency of yellow tone, with white and russet inclusions. L: 42 cm, 47 grams

Estimate CA\$300 - \$500



065

065
 老蜜蜡手串
 CHINESE COUNTER BEADS AND AGATE BRACELET

Comprised a strand of round beads and flattened round beads in alteration, enclosed by an octagon cylindrical bead. L: 21 cm, 28 grams

Estimate CA\$500 - \$800



066

066
珊瑚项链
CHINESE CORAL
NECKLACE

Comprised a strand of three layers of coral strips attached to a sterling tab-insert closure, the stone of copper-red tone. L:41 cm, 67 grams

Estimate CA\$500 - \$800

067
珊瑚胸针两件
SET OF TWO CORAL
BROOCHES

Comprised of two coral pendant: a pendant with nine beads mounted in a diamond section; a pendant carved in openwork style with flowers and birds in 18K gold. L: 4 cm, 11 grams; L: 5.9 cm, 47 grams

Estimate CA\$1,000 - \$1,500



067

068
铜印章五件
GROUP OF FIVE CHINESE BRONZE SEALS

Comprising a group of five seals: a monkey carving seal; toad carving seal; a leopard carving seal; a lion carving seal; a bail attached seal. Money 2 x 2 x 4 cm; Toad 2 x 1.9 x 2.5 cm; Leopard 2.3 x 2.2 x 2.3 cm; Lion 1.3 x 1.3 x 1.7 cm; Seal 1.5 x 1.1 x 1.1 cm

Estimate CA\$300 - \$500



068



069

069
18K 0.25 克拉戒指
0.25 CARAT DIAMOND INLAID 18K GOLD RING

Comprising a ring design, collet-set to the center accented with brilliant-cut diamonds, accompanied with a fitted ring box. Inner diameter: 16.64 mm, 3 grams

Estimate CA\$400 - \$600

070
1936 年伦敦中国艺术品国际展览会图录一套四本
SET OF YEAR 1936 LONDON CHINA ART EXHIBITION CATALOGUES

Comprising a set of 4 volumes, illustrated catalog, with a detached but present spine cover for the book, accompanied with a Sotheby's bag. L: 17.3 cm, W: 20 cm (each)

Estimate CA\$600 - \$800



070



071

071
天珠项链
DZI BEADS NECKLACE

Comprising a silver-tone beaded necklace decorated with wooden beads and a carved dragon ball within the center, suspending two small drops on the sides. L:37 cm, 46 grams

Estimate CA\$500 - \$800



072

072
翡翠木珠项链
JADEITE AND WOOD BEAD NECKLACE

Comprising a strand of 26 wooden beads, divided into four group of three beads, attached at the back a toggle closure, suspending a lotus shape pendant and terminating with five chain drops. 39 cmlong, Pendant: 7 cm wide, 72 grams

Estimate CA\$500 - \$800



073

073
琥珀项链
AMBER NECKLACE

Comprising a strand of 48 amber beads with some silver division decorations, suspending a large amber bead with an attractive polish further suspending a flower pendant and terminating with five chain drops. L: 37 cm, 57 grams

Estimate CA\$500 - \$800



074

074
绿松石项链
TURQUOISE NECKLACE

Comprising a strand of compressed circular turquoise beads supporting a turquoise plaque pendant. L: 40 cm, 79 grams

Estimate CA\$200 - \$400



075

075
18K 白金私人订制嵌钻石戒指 带证书
DIAMOND INLAID 18K PLATINUM RING

Custom designed ring with diamonds mounted 18k gold, accompanied with a box and certification. D:16.5 mm, 4.48 grams

Estimate CA\$500 - \$800



076

076
竹雕太狮一对
PAIR OF CHINESE BAMBOO 'BUDDHIST LION' CARVINGS

Deftly carved in the form of a pair of recumbent Buddhist lions with its head turned to the side and their mouth open, one's front paw resting on a pierced brocade ball (xiu qiu), the other with its front paw on acub. Lion with xiu qiu 7 x 5.8 x 6 cm

Estimate CA\$400 - \$600



077

077
玉山羊摆件
CHINESE JADE GOAT CARVING

Depicting a lively carved goat, detailed horn and kneeling on four limbs with a perforation drilled between the front knees, the stone of pale white with russet streaks. 6.5 x 3.5 x 2.1 cm

Estimate CA\$300 - \$500



078

078
银镀金烧蓝拉丝蝴蝶胸针
SILVER ENAMELED BUTTERFLY BROOCH

Designed as a butterfly with openwork wired wings, applied with green, orange and red enamel. 6.2 x 5 cm, 12 grams

Estimate CA\$200 - \$400



079

079
翡翠玉手花篮胸针
JADEITE AND GEMSTONES INLAID SILVER BROOCH

Designed as a flower basket, decorated with jadeite and butterfly enamels. 3.8 x 2 cm, 7 grams

Estimate CA\$400 - \$600



080

080
北洋造光绪元宝一组四枚
SET OF FOUR CHINESE SILVER COINS

Dollar, undated, legend in Chinese and Manchu, reverse with dragon, legend in Chinese and English around. D: 39.04 mm, Weight:27 grams (each)

Estimate CA\$1,000 - \$1,500



081

081
白玉虎头佩
CHINESE WHITE JADE TIGER HEAD PLAQUE PENDANT

Carved bilaterally tiger's face pendent, peiced with holes on the head and the chin attached with a string on the top perforation, the stone of white tone. 6.1 x 4.5 cm, Thickness 5.46 mm

Estimate CA\$8,000 - \$12,000

082

黄地粉彩梅瓶 《大清光绪年制》款
YELLOW GROUND FAMILLE-ROSE VASE, GUANGXU MARK

Of baluster form rising to a short neck and everted rim, painted on the body flowers sprays and phoenixes reserved on a yellow ground, decorated with ruyi band on the shoulder and lappet band to the base, the base with six character Guangxu mark. H: 22 cm

Estimate CA\$800 - \$1,000



082

083

龙凤纹玉佩
CHINESE WHITE JADE CARVED CIRCULAR PENDANT

Elegantly carved in bilateral openwork style, a circular plaque carved with dragon and phoenix and curling tendrils encircling a coin in the center, the stone of overall white tone. D: 5.6 cm, Thickness 0.5 cm



083

Estimate CA\$200 - \$400



084

084

硬木松云纹雕件
HARDWOOD PINE TREE AND CLOUD CARVING

Exquisitely carved in high relief openwork style depicting pine tree on circular moire pattern. 13.5 x 10 x 4 cm

Estimate CA\$200 - \$500



085

085

王成喜 (1940-) 牵牛花 设色纸本 带框
WANG CHENG XI (1940-) MORNING GLORY

Flower and leaf. Ink and color on paper. Mounted and framed. Titled and signed by the artist, with three seals 45.5 x 67.5 cm

Estimate CA\$600 - \$800



086

086

十七, 十八世纪 白玉莲藕挂件
CHINESE WHITE JADE LOTUS ROOT CARVING PENDANT, 17-18TH C.

A carving with holes pieced through mimicing the lotus root form mounted with a lotus flower and leaf carvings on top, attached with a string, the stone of white tone. 4.2 x 2 x 3.2 cm

Estimate CA\$8,000 - \$12,000



087
 吴筠生 (约苍) 晚清民国 花鸟 挂轴 设色纸本
 WU JUNSHENG (LATE QING TO REPUBLIC P) FLOWER
 & BIRD

Flower ground with bird rested on a pine tree branch.
 Ink and color on paper. Mounted on a hanging scroll.
 Titled and signed with two artist seals. 27.4 x 98.5 cm

Estimate CA\$500 - \$800



088
 吴作人 (1908-1997) 款 金鱼图 设色纸本 挂轴
 AFTER WU ZUOREN (1908-1997) GOLDFISH

Goldfish and lotus scene. Ink and color on paper
 mounted as a hanging scroll. Sign and dated 1980 with
 two artist seals. 88 x 48 cm

Estimate CA\$400 - \$600

088

089
 二十世纪 酸枝案台
 CHINESE SUANZHI ALTAR TABLE SET, 20TH C.

A set of two alter table: of a rectangular top with straight extruded flange and a drawer on both sides, with spandrelled apron carved in openwork style floral foliate patterns, supported on two pairs of legs conjoined on the shorter side with reticulated stretchers; the small squared tables carved in samilar pattern, accompanied with a total of four pull-out drawers on the both sides. Alter table (rectangular) 210 x60.5 x 126 cm; Alter table (lower) 78.3 x 103.3 x 87 cm

Estimate CA\$5,000 - \$8,000

087



089



090

090
绿地粉彩花瓶一对《大清乾隆年制》款
PAIR OF GREEN GROUND FAMILLE-ROSE VASES, QIANLONG MARK

Of square-baluster form, the body decorated with various of florals, all against a green ground, the base with six character Qianlong Mark. H: 36 cm

Estimate CA\$500 - \$800



091

091
清粉彩人物开光花瓶对《大清同治年制》款
PAIR OF FAMILLE-ROSE VASES, TONGZHI MARK, QING DYNASTY

Of round body rising from an splayed foot to an everted mouth, the body decorated with figures within two lobed panels. the side flanked with two elephant heads, the base with six-character Tongzhi mark. H: 39.5 cm

Estimate CA\$600 - \$1,000



092

092
晚清粉彩人物花瓢《大清同治年制》款
FAMILLE ROSE GU VASE, LATE QING DYNASTY W. TONGZHI MARK

In the form of a gu vase, the exterior with two sections of children playing within a garden scene, separated with a patterned band, the unglazed foot ring reveals the buff ware, and the base with six-character Tongzhi mark. H: 32.5 cm

Estimate CA\$400 - \$600



093

093
清青花'双龙戏珠'将军盖罐带座
CHINESE BLUE AND WHITE 'DRAGON' JAR WITH COVER, QING DYNASTY

With a spreading foot rising to a baluster body, the exterior decorated with two dragons in pursuit of a flaming ball amidst scrolling clouds, the domed cover similarly painted and surmounted with a beast finial, accompanied with a fitted wooden stand. H: 45 cm (with cover)

Estimate CA\$2,500 - \$3,000



094

094
清粉彩花瓶灯架(底部钻洞)
CHINESE FAMILLE-ROSE VASE LANTERN STAND, QING DYNASTY

Of baluster form vase mounted on the top with a table lamp mechanism, painted on the vase flower foliage on yellow ground, the base with a six character seal and a drilled hole, all supported on the fitted wood stand with plug-in attached. Vase H: 24.5 cm, Total H: 45.5 cm

Estimate CA\$600 - \$1,000



095

095
王雪涛 (1903-1982) 款 花鸟 设色纸本 挂轴
AFTER WANG XUETAO (1903-1982)
FLOWER AND BIRD

Insects and blossoms with rock scene. Ink and color on paper mounted as a hanging scroll. Signed to top left with two artist seals. 101 x 48 cm

Estimate CA\$200 - \$400



096

096
黄地雀梅大盘 《大清道光年制》款
CHINESE YELLOW GROUND 'PRUNUS' PLATE W. DAOGUANG MARK

Interior enameled on the yellow background with prunus branch and blossoms with birds in alternate forms, the exterior decorated with flower motifs, turquoise glazed base with six character mark. D: 35 cm

Estimate CA\$800 - \$1,000



097

097
晚清漆盒 《慎德堂制》款
BLACK AND RED LACQUERED WOOD BOX, SHENDETANG MARK

A rectangular box carved with scrolling motif in black ground and red line lacquer, the box and hinged cover opened upward with a ruyi lock design, the interior with copper-red lacquer, the base with with four character Shendetangzhi mark. 17.5 x 11.6 x 7 cm

Estimate CA\$600 - \$800



098

098
1900-1910 日本双耳萨摩盖罐
DOUBLE EARS JAPANESE SATSUMA JAR, 1900-1910

The jar of cylindrical form, the body decorated with numbers of immortal figures including Kanon (Guanyin) and Rakan (Lohan), two triangular form handle flanked on the side, accompanied with a fitted bronze cover, the base with nine-character Japanese seal. 27.5cm x 21cm

Estimate CA\$800 - \$1,200

099

清 青花神兽八方花盆
BLUE AND WHITE
CHINESE BEASTS
JARDINIÈRE, QING
DYNASTY

Sturdily potted with straight side to a wide everted rim, the exterior painted with Chinese ancient beasts on the sea, the mouth decorated with a key-fret bands and the unglazed base reveals the buff ware. 38.5cm x 37cm x 23cm

Estimate CA\$12,000 - \$18,000



099



100

100

清 翡翠青蛙雕件
JADIETE FROG CARVING,, QING DYNASTY

Vividly carved as a crouching frog, the stone of green tone with darker inclusions. 4.5cm x 3cm x 2cm

Estimate CA\$300 - \$500



101

101

王翬 (1632-1717) 款 山水
设色纸本 带框
AFTER WANG
HUI (1632-1717),
LANDSCAPE

Landscape scene: mountain and people in bird's eye view. Ink and color on paper. Mounted and framed. Titled and signed by Wang Hui, with seven seals 137 x 60.5 cm

Estimate CA\$600 - \$1,000

102



102

元 青玉鏤雕一路連科紋鈕

CELADON JADE RETICULATED 'EGRET' FINIAL, YUAN DYNASTY

Meticulously carved with reticulated flowers and cranes, with four pierced hole on the base, the stone of white tone, accompanied with a box. 3.5 x 3.6 x 4.5 cm

Provenance: Sotheby's New York September 15-16th. 2015

Estimate CA\$8,000 - \$12,000

103

陈光豫 (1860-1924) 山水 设色纸本 挂轴

CHEN GUANGYU (1860-1924), LANDSCAPE

Mountain and landscape scene. Ink and colour on paper. Title by the artist, with one seal. 38.5 x 148 cm

Estimate CA\$500 - \$800



103

104

赵奇 (1954-) 东峰雪霄 设色纸本 挂轴

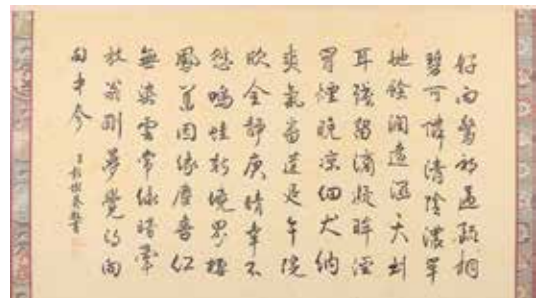
ZHAO QI (1954-), MOUNTAIN AND SNOWY LANDSCAPE

Mountain and snowy landscape scene. Ink and colour on paper. Signed and titled by the artist, with one seal. 88 x 29 cm

Estimate CA\$500 - \$800



104



104A

104A

彭树葵 (1710-1775) 书法 水墨纸本

PENG SHUKUI (1710-1775) CALLIGRAPHY

Calligraphy, signed Peng Shukui with two artist's seals, ink on paper, mounted. 66.8cm x 40.5cm

Estimate CA\$600 - \$1,000



105

105
多彩宝石翡翠 14K 戒指
14K GOLD RING WITH JADEITE
MULTI-COLORED GEM-SET

Multi-colored gemstone set in three levels mounted in 14 karat gold, accompanied with a cushioned box. Inner diameter: 18.51 mm, 5 grams

Estimate CA\$400 - \$600



106

106
晚清民国 顽童敲鼓铜像
BOY AND DRUM BRONZE
STATUES, LATE QING/
REPUBLIC PERIOD

Of a circular drum supported on a carved half-moon shape stand and carved foot with two boys, one standing on the side holding Ruyi-shape drumstick and the other climbing on the drum with a big smile on the face. H:16.5 cm

Estimate CA\$300 - \$500



107

107
仿生壶《周定芳制》款
CHINESE TEAPOT WITH
ZHOU DING FANG MARK

Of a cube form teapot with a matching cover, the body flanked by a hammer resemblance handle and a geometric spout, the base incised with a four-character Zhou Ding Fang Zhi seal mark. H: 10.7 cm

Estimate CA\$600 - \$1,000



108

108
十九世纪 瓷仿绿松石鲤鱼洗
A CHINESE TURQUOISE
GLAZED 'FISH' WASHER 19TH
C.

Of a pebble shape section, carved with a lotus leaf resemblance base and a fish carving on the side, covered all over with turquoise glaze. L: 11 cm

Estimate CA\$200 - \$400



109

109
民国 圆形墨盒
CHINESE ROUNDED INK BOX, REPUBLIC
PERIOD

Of a flat cylindrical form incised with apocryphal inscriptions on top, with a fitted mid-division box and cover, the base incised with characters. D: 4.8 cm, H: 2 cm

Estimate CA\$200 - \$400



110

110
清中期 漆雕花卉纹笔筒 《乾隆年制》
款
CINNABAR LACQUER BRUSHPOT WITH
QIANLONG MARK, MID-QING DYNASTY

Of a cylindrical, incised with latticework patterns all over the body and the rim, decorated with two circular bands and Ruyi shape frame in lacquered lining encircling tree branches and bird incision, lacquerbase, and interior, the base glued with a sticker and incised with four characters Qianlong mark. D: 13 cm, H: 15.3 cm

Estimate CA\$1,500 - \$2,000



111

111
鼻烟壶一对
PAIR OF CHINESE SNUFF BOTTLES

Of a flattened archaic "hu" form and a flattened globular form bottles, bilateral decorated with turquoise and coral and phoenix carvings, accompanied with matching stoppers. H: 7.6 cm; H: 8.2 cm

Estimate CA\$400 - \$600



112

112
剔红雕纹鼻烟壶
CHINESE CARVED CINNABAR LACQUER SNUFF BOTTLE

Of a flattened globular body, deftly carved in high relief with a deer and a leopard on the reverse side in landscape scene, the shoulder carved with latticework patterns, gold-tone rim and black lacquered base. H:8.7 cm

Estimate CA\$300 - \$500



113

113
十七世纪 三足双耳铜炉 《大明宣德年制》款
TRIPOD BRONZE CENSER, XUANDE MARK, 17TH C,
Of a flattened globular form supported on three cabriole legs, flanked with a up-curve-in ears, the base incised with six character Xuande mark. H:20 cm

Estimate CA\$3,000 - \$5,000



114

114
白玉四方挂件
CHINESE WHITE JADE CARVED RECTANGULAR PENDANT

A rectangular plaque in openwork style attached with a strand, bilaterally incised free-floating with scrolling patterns, the stone of white tone. 8 x 3 cm, Thickness 6 mm

Estimate CA\$3,000 - \$5,000



115

115
葫芦玉鼻烟壶
CHINESE JADE GOURD SNUFF BOTTLE

Of a flattened ovoid shape in a gourd resemblance, lively carved in high relief vine leaves and butterfly on the body. H: 4.9 cm

Estimate CA\$2,000 - \$4,000



116

116
吉州窑水盂
CHINESE JIZHOU-GLAZED WATERPOT

Of a globular body tapering down to straight foot and a flat base, three green marks on the body, covered with honey-mustard tone glazed end in a midsection of the exterior to an unglazed base. H: 4 cm

Estimate CA\$300 - \$500



117

117
粉彩人物花瓶
CHINESE FAMILLE-ROSE FIGURAL SCENE VASE

Of a globular form tapering down to a flat base, decorated with a key-fret band on the shoulder and a Ruyi band to the base, painted in between sceneries of two ladies playing chess and Guzheng. H: 41.5 cm

Estimate CA\$1,000 - \$1,500



118

118
五彩水盂 《大清康熙年制》款
CHINESE FAMILLE-VERTE DRAGON WATER POT, KANGXI MARK

Of compressed globular body rising to a short mouth rim, decorated on the body two green dragons with a flaming ball amidst the clouds, the base with six-character Kangxi mark. D: 18 cm, H: 10.5 cm

Estimate CA\$1,000 - \$1,200



119

119
民国 山水纹茶盘
CHINESE LANDSCAPE TEA TRAY, REPUBLIC PERIOD

Of a lightly barbed ovoid section rising to an everted rim, painted with mountain and water scene with calligraphy, base unglazed. 26 x 28.5 x 2 cm

Estimate CA\$400 - \$600



120

120
十三行雕名片盒
CHINESE CANTON CARVED WOODEN CARD CASE AND COVER

Of a rectangular box exquisitely carved, depicting figures and architectures submerged in carved trees and blossom with a matching fitted cover. 6.7 x 10.6 x 1.5 cm

Estimate CA\$200 - \$400



121

121
白玉雕人物插牌
CHINESE WHITE JADE 'FIGURAL' PLAQUE

Of a rectangular plaque, carved with precision depicting figures in an architectural and mountain landscape setting, the stone of white tone, accompanied with a cushioned box. 8.8 x 4.9 x 1.04 cm

Estimate CA\$2,000 - \$3,000



122

122
如意龙纹玉挂件
CHINESE CARVED JADE 'DRAGON' PENDANT

Of a rectangular section with barbed corner and a centre aperture, incised with four Ruyi design on one side, the reverse carved with a bifurcated leaf tail dragon, the stone of white colour with russet spots, with chain. 2.9 x 3.5 x 0.8 cm

Estimate CA\$200 - \$400



123

123
德化白瓷梅花杯 带座
CHINESE BLANC-DE-CHINE LIBATION
CUP WITH STAND

Of a short cylinder rising up to a fluted rhombus shape opening, decorated with plum trees and animal carvings on the exterior, covered with white glazed, accompanied with a carved wood stand. H:6.5 cm

Provenance: from an important Toronto Collector

Estimate CA\$600 - \$800



124

124
十六、十七世纪 德化白瓷炉带座盖
BLANC-DE-CHINE BURNER WITH STAND &
COVER, 16/17TH C.

Of a compressed archaic hu form supported on a slightly flared foot, flanked with two beast mask ears, applied all over in white glazed, accompanied with an openwork floral carving cover surmounted by the seated lion and a carved wood stand. H (w. cover): 13.5 cm

Provenance: from an important Toronto Collector

Estimate CA\$3,000 - \$5,000



125

125
青花纹盘
CHINESE BLUE AND WHITE 'HUNDRED
ANTIQUES' CHARGER

Painted with flower vase in the center surrounded by latticework pattern with four objects and circular band, painted on the exterior four flower blossoms. D: 23.3 cm

Estimate CA\$300 - \$500



126
清末 老红木螺钿石面八仙桌
RADEN MARBLE INLAID ROSEWOOD TABLE, LATE QING DYNASTY

Of a square marble-inlaid table top set into a mitered, mortise and tenon frame over an carved openwork style apron with raden inlaid, depicting plum blossoms with items and Chinese character, supported on four legs. 93.7 x 93 x 75 cm

Estimate CA\$600 - \$800

126



127

127
哥窑堆瓷龙纹瓶 《成化年制》
款
GE-TYPE VASE, CHENGHUA MARK

Of a tubular form white crackle glazed vase, carved with a dragon on the exterior and decorated with a circular band to the bottom white four character seal. D: 11 cm, H: 30 cm

Estimate CA\$200 - \$400



128

128
粉彩八吉祥纹碗对 《大清光绪年制》款
PAIR OF FAMILLE-ROSE 'BAJIXIANG' BOWL GUANGXU MARK

The deep rounded sides supported on a straight foot, decorated on the exterior with eight bajixiang emblems interlinked by foliate strap work between key-fret band on the top and riyi band on the bottom, with six character seal. D: 8.8cm, H: 6 cm

Estimate CA\$300 - \$500

129
十九世纪 硬木画盒
HARDWOOD PAINTING STORAGE BOX , 19TH C.

Of a rectangular box with a fitted slide-in lid, with the side exposed mitred mortise and tenon joinery. 50 x 16 x 13.5 cm

Estimate CA\$600 - \$1,000



129

130
清 白玉转心佩 带座
CHINESE WHITE JADE LOBED PLAQUE WITH STAND, QING DYNASTY

A circular pendant of eight-lobes with a mobile centerpiece circulated by key-fret bands, incised with eight Bagua motifs and twelve-characters of time on the exterior surfaces, four tiny pierced 'ruyi' shaped holes around the perimeter with a bail attached, the stone of white tone. D: 5.5 cm, Thickness 5.62 mm

Estimate CA\$1,500 - \$2,000



130



131

131 二十世纪 榆木官帽椅对带小几
PAIR OF ELMWOOD ARMCHAIRS WITH SMALL TABLE 20TH C.

The chair each with an arched crestial with projecting upturned ends, the curved splat foliate medallion, the serpentine armrests supported by 'S'-curved posts, all supported on four straight cylindrical feet with plain stretchers and footrests. Chair (x2) 55.8 x 44 x 111.5 cm; Table 44.5 x 33 x 70.9 cm

Estimate CA\$500 - \$800



132

132 石雕葵口洗 (汉白玉)
HARD STONE CARVED LOBED BRUSH WASHER

Of an eight-sided barbed shape rising straight up from four short foot, the marble of creamy white tone with tiny tinted reflections and russet staining. D: 10 cm, H: 4.5 cm

Estimate CA\$400 - \$600



133

133 红山风格兽型古玉匕首雕件
HONGSHAN STYLE CELADON JADE DAGGER PENDANT

Of an elongated beast carving with perforation pierced through, the stone of apple green and buff tone. 8.5 x 2.7 x 0.6 cm

Provenance: Acquired from H. H. Pao Xie, Toronto.

Estimate CA\$600 - \$800



134

134 晚周至汉 古玉鸟雕件
CALCIFIED JADE BIRD-FORM PENDANT, LATE ZHOU TO HAN DYNASTY

An archaic calcified bird carving with perforation pierced at the base, the stone of opaque white and apple green inclusions. 3.2 x 3 x 0.3 cm

Provenance: Acquired from H. H. Pao Xie, Toronto.

Estimate CA\$400 - \$600

135

周古玉璜三件

THREE ARC-SHAPED JADE PENDANTS, PROBABLY ZHOU DYNASTY

A set of three arc-shaped pendants pierced on the two ends, the stone of moss green with russet inclusions. L: 6.6 cm, Thickness 0.3 cm

Provenance: Acquired from H. H. Pao Xie, Toronto.

Estimate CA\$800 - \$1,200

135



136

商代风格人物跪像古玉雕

SHANG-STYLE KNEELING FIGURE

An archaic arm crossed figure carving with perforation pierced at the back, the stone of moss green tone with areas of white calcified at the back. H: 8.4 cm, Thickness 1 cm

Provenance: Acquired from H. H. Pao Xie, Toronto.

Estimate CA\$400 - \$600

136



137

新石器时代风格人物古玉雕

JADE NEOLITHIC STYLE FIGURAL PENDANT

An archaic mask pierced with eyes and mouth, the stone of buff tone with mottled opaque alternation. L: 3 cm, Thickness: 0.4 cm

Provenance: Acquired from H. H. Pao Xie, Toronto.

Estimate CA\$400 - \$600

137



138

金琥珀银镶吊坠

AMBER INLAID SILVER PENDANT

Of an organic-pebble shape, amber mounted in a gold frame with bail, the stone of semi-transparent with russet inclusions. 5.5 x 4 cm, 23 grams

Estimate CA\$200 - \$400

138



139

清花瓶纹玉盖盒

CELADON JADE-INSET METAL BOX AND COVER, QING DYNASTY

The hinged cover inset with a pale celadon jade plaque depicting lotus blossom and leaves within a vase, the box of oval form, the side of the box incised with butterfly, the base with 'China' mark. 10.3 x 6.9 x 6 cm

Estimate CA\$800 - \$1,200

139





140

140
 端砚带木盒 ‘左田’ 款
 'DUAN' INKSTONE WITH HARDWOOD COVER, ZUOTIAN MARK

Of an ovoid section engrave with calligraphy next the artist sign Zuotian above a concave dent, accompanied with a fitted wood box decorated with figure and three character Litieguai mark. 18.9 x 15.6 x 2.3 cm

Estimate CA\$200 - \$400



141

141
 丹桂五芳墨 《大清光绪年制》款
 CHINESE INK STICK, GUANGXU MARK

Of archaic 'hu' section, carved with scholar and parents and boys around a table, the reverse side with miscellaneous objects, one side incised with six character Guangxi mark, the other side with Hukaiwen mark, accompanied with a fitted box. 23.8 x 11.8 x 2.1 cm

Estimate CA\$200 - \$400



142

142
 绿地雕瓷龙纹瓶 《陈国治制》款
 GREEN GROUND DRAGON VASE, CHENGUOZHI MARK

Of baluster body rising to a cylindrical neck and mouth, carved in high-relief a vivid dragon amidst clouds on green glazed ground, with buffed footring, the base with four character Chen Guozhi mark. H:35 cm

Estimate CA\$600 - \$800



143

143
 五彩花鸟盘口梅瓶
 FAMILLE-VERTE BIRD AND FLOWER VASE

Of baluster body rising to a narrow cylindrical neck and a wide open mouth, decorated with ruyi band on the shoulder and lappet band to the bottom, painted with birds and flowers on the body, accompanied with a wood stand. D: 25.5 cm, H: 65.5 cm

Estimate CA\$1,800 - \$2,400

144

清 哥釉鼻烟壶

CHINESE GE-TYPE SNUFF BOTTLE, QING DYNASTY

Of baluster form supported on flaring foot, covered overall with a light beige glaze suffused with a network of russet crackles, accompanied with a stopper. H:7.8 cm

Estimate CA\$300 - \$500



145

145

嘉道青瓷青花人物双耳瓶

BLUE AND WHITE DOUBLE EAR VASE

Of baluster form, rising from an inverted foot and to a waisted neck and everted mouth, the side flanked by two ears, the body decorated in blue and white with figures, animals, pine trees and scholar's rock all against a celadon glaze ground. H; 22.7 cm

Estimate CA\$400 - \$600

146

黄玉双耳杯

CHINESE DOUBLE EAR JADE CUP

Of circular round sides rising to a slightly flared rim, supported on a straight foot, flanked with a finely carved mythical creature in openwork style with curling tendrils, the stone of smoothly polished celadon color punctuated with russet inclusions. H: 3.6 cm

Estimate CA\$2,000 - \$4,000



144

147

刻经文水晶杯 《乾隆御提》款

CHINESE INSCRIBED CRYSTAL CUP WITH BOX, QIANLONG MARK

Of clear tall round, side rising from a short foot, incised with gold inscription and mark on the body, accompanied with a wooden box with calligraphy in the cover. D: 4.7 cm, H: 5.2 cm

Estimate CA\$8,000 - \$12,000



146

148

玛瑙巧雕鼻烟壶

CHINESE AGATE SNUFF BOTTLE

Of compressed bulbous form on a short foot, the bottle of translucent light grey progress to opaque brown color skilfully carved a seated figure and a mountain landscape, accompanied with a stopper. H: 6.8 cm

Estimate CA\$200 - \$400

149

青白玉双耳炉

CHINESE CELADON JADE INCENSED BURNER

Of compressed globular body on three rounded tapering legs, flanked with two stately ears, incised with a key-fret band on the mouth rim and a carved motif band on the body, the stone of celadon color with russet inclusions. H: 6.4 cm

Estimate CA\$800 - \$1,200



147



148



149



150

150
 双狮耳铜炉 《大明宣德年制》款
 BRONZE DOUBLE-EAR BURNER, XUANDE MARK

Of compressed globular body rising from a short foot to a slightly everted rim, flanked with two vividly carved lion head on the shoulder, the base incised with six-character Xuande seal and mark. H: 4.7cm

Estimate CA\$500 - \$800



151

151
 青花龙纹水盂
 CHINESE BLUE AND WHITE WATER POT

Of compressed round body, painted in blue and white with a key-fret band to the rim and depicting a dragon in pursuit of a flaming pearl amidst scrolling clouds on the body. D: 4.1 cm, H: 9.1 cm

Estimate CA\$300 - \$500



152

152
 明 蓝色釉面香炉带玉手柄盖
 CHINESE BLUE GLAZED CENSER W. JADE HANDLE COVER, MING DYNASTY

Of compressed globular body supported on three legs, the censer with two ears on the side, accompanied with a fitted wooden cover with a jade handle on the top, the unglazed base incised with a floral pattern similar to the body. H:21cm (including jade handle)

Estimate CA\$1,000 - \$1,500



153

153
 硬木笔海
 CHINESE HARDWOOD BRUSH POT

Of cylindrical form rising from a flat base with a perforation (D:8 cm) drilled through, the warmly painted wood with natural attractive grain pattern and variegated brown streaks. D: 24.2 cm, H: 22.4 cm

Estimate CA\$200 - \$400



154

154
 十九世纪 竹嵌花鸟纹笔筒
 CHINESE INLAID BAMBOO BRUSH POT 19TH C.

Of cylindrical form rising straight up with shell decorations on the body features birds rest on bamboos, butterflies and flowers and calligraphy inscriptions, the interior exposed with natural bamboo wood, fourcharacter seal mark on the side. D: 13.6 cm, H: 14.6 cm

Estimate CA\$400 - \$600

155

清 人物故事玉盖盒

CELADON JADE-INSET METAL BOX AND COVER , QING DYNASTY

The detachable cover inset with a pale celadon jade plaque depicting two figures within a landscape scene with pine trees and scholar's rocks, the side of the box incised with repeating hexagon patterns, the base with two character mark. 6 x 10.7 x 5.2 cm

Estimate CA\$600 - \$1,000



155

156

青釉圈纹小炉

CELADON GLAZE CENSER

Of cylindrical form, the body potted with five horizontal lines, are rested on a cylindrical straight foot and with a rounded mouth, the body covered with creamy light celadon glaze with russet crackles, the unglazed base and interior reveals the buff ware. D: 8.8 cm, H: 6.7 cm

Estimate CA\$800 - \$1,200



156

157

谷纹玉璧

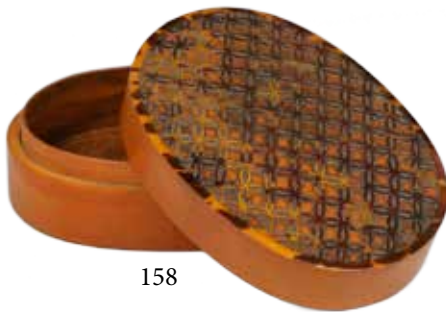
CHINESE ARCHAISTIC JADE BI DISC PLAQUE

Of disc form, carved on one sides archaic "gu" grain pattern, the reverse encircled with five C-pattern scroll, the stone of celadon tone with white inclusions. D: 55.76 mm, Thickness 6.52 mm

Estimate CA\$300 - \$500



157



158

158

十九世纪 椭圆漆器盒

CHINESE LACQUERED BOX, 19TH C.

Of elliptical shape section rising straight up from a flat base to a fitted mid-division box and cover, the top carved with detailed latticework, exposed interior and polished honey tone exterior. 6.5 x 9 x 3.4 cm

Estimate CA\$300 - \$500



159

159

青釉开片水盂

CHINESE CELADON GLAZE WATERPOT

Of flattened globular form on a flat base, covered in grey glaze from the exterior to the top half of the interior. D:5.3 cm, H: 4cm

Estimate CA\$200 - \$400



160

160

老翡翠鼻烟壶

CHINESE JADEITE SNUFF BOTTLE

Of flattened shield form rising from a short foot, the smooth polished stone of translucent white tone with areas of spinach green tone, accompanied with a matching stopper. H: 5 cm

Estimate CA\$2,000 - \$4,000



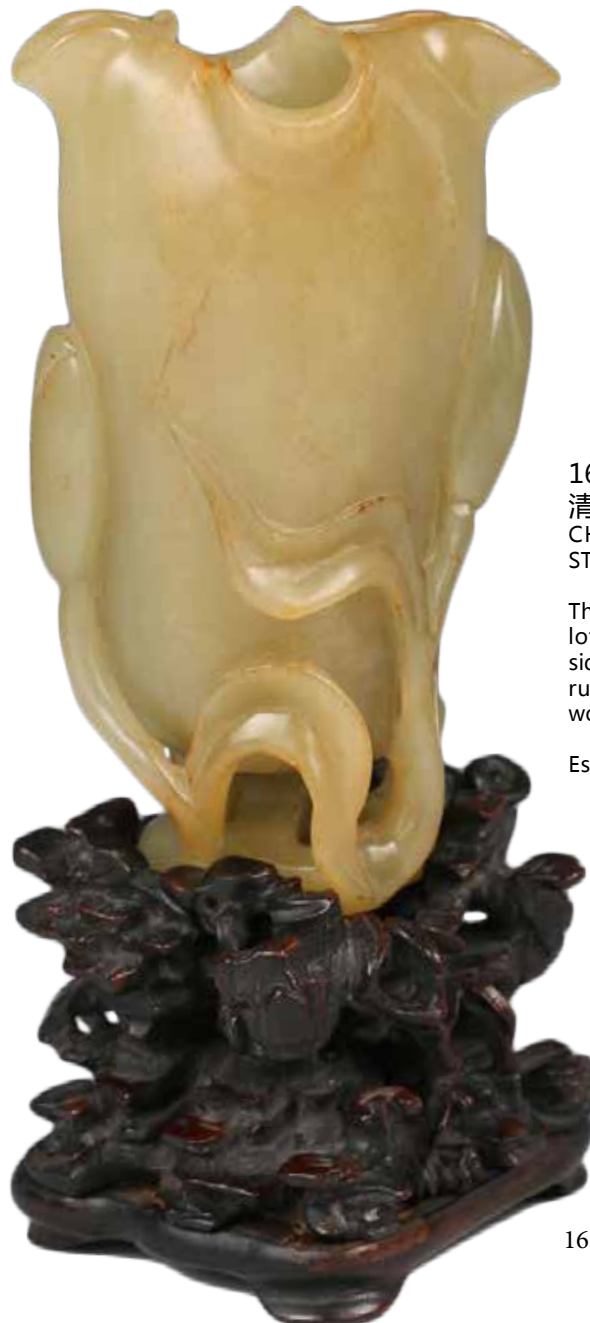
160A

160A

出口创汇时期 翡翠雕西厢记人物故事插屏带硬木架
CHINESE JADEITE SCREEN WITH HARDWOOD STAND, EXPORT P.

Carved in relief with story scene from 'Romance of the Western Chamber', the reverse carved with mountain and river lightly, the stone pale green with inclusions in other tones, accompanied with a hardwood stand. Total: 97cm x 60cm, Jadeite panel: 53.5cm x 36.5cm

Estimate CA\$3,000 - \$5,000



161

清 黄玉花插连底座
CHINESE YELLOW JADE VASE WITH
STAND, QING DYNASTY

The cup finely carved in the form of a lotus blossom with lotus roots on the side, the stone of yellow tone with some russet inclusions, accompanied with a wood stand. H: 10 cm

Estimate CA\$3,000 - \$5,000

161



162
 二十世纪 鸡翅木柜子对
 PAIR OF CHINESE PIERCED JICHIMU CABINETS, 20TH C.

A tall rectangular unit carved in openwork key-fret pattern, flanked with two doors and a vertible mid division, four shelving level inside. 87.5 x 38 x 184.5 cm (each)

Estimate CA\$2,000 - \$3,000



163
清 青釉暗刻花卉纹瓶
CHINESE INCISED CELADON GLAZED VASE, QING DYNASTY

Of globular body rising from a conical foot to a short neck and an everted mouth, the body covered in bluish-celadon glaze, and incised with interlaced floral patterns, the unglazed foot ring with a small chip reveals the buffware. H: 19.2 cm

Estimate CA\$500 - \$800

163

164
晚清 青花古典人物盖罐
CHINESE BLUE AND WHITE 'FIGURAL' JAR WITH COVER, LATE QING

Of globular form rising to a short cylindrical mouth, decorated with bands on the shoulder, painted in blue and white with standing figures. H: 23.2 cm

Estimate CA\$300 - \$500



164



165

165
明 双耳活环大铜罐
CHINESE ARCHAIC BRONZE DOUBLE-EAR JAR, MING DYNASTY

Of globular form supported on a flared foot and rising to a waisted neck and a straight rim, flanked with beast masks and rings on the shoulder, decorated with Taotie motif bands on the shoulder and body. D: 35.5 cm, H: 30.7 cm

Estimate CA\$800 - \$1,200

166
景泰蓝六角瓶
CHINESE CLOISSONNE HEXAGONAL VASE

Of hexagonal section tapering down to a flared foot, waist neck and flaring rim, painted with a gold line all over the fringe, exterior enameled with flowers and scrolling foliage with birds and insects on blueground. H: 30.9 cm

Estimate CA\$600 - \$800



166



167

167
清中期 三足铜炉连座
CHINESE BRONZE CENSER WITH FITTED STAND, MID QING DYNASTY

Of lobed form and quatrefoil section, the compressed body supported on three bamboo form feet, accompanied with a leaf form fitted wooden stand. 23.3 x 20.5 x 7 cm

Estimate CA\$2,000 - \$4,000



168

民国 宝石镶嵌银香炉一对 带座
 PAIR OF GEM INLAID SILVERED METAL
 BURNERS W. STAND, REPUBLIC PERIOD

Comprising of three detachable parts, overall of square pyramid form supported on four legs carved with beast head, the body covered in finely carved silvered metal and inlaid with various gemstones such as coral, jade and turquoise, accompanied with two square form wooden stands. Burner 103 x 54 x 54 cm; Stand 73.3 x 66 x 66 cm

Estimate CA\$8,000 - \$12,000

168



169

硬木圆几对
 PAIR OF CHINESE CARVED
 WOODEN TABLES

The circular top panel set over a finely pierced waist, the slightly canted shoulder carved with flowers, all raised on five cabriole legs ending in hoof feet and joined by a conforming base stretcher over bracket feet. D(table top): 54.5 cm, H: 84.3

Estimate CA\$3,000 - \$5,000

169



170

170
白玉雕梅花盖盒
CHINESE WHITE JADE PLUM BLOSSOM
BOX AND COVER

Of low round sides to a fitted mid-division box and cover, carved on the top of the cover plum tree with open blossoms and birds, the smooth stone of white tone with light russet inclusions. D: 7.7 cm, H: 1.7 cm

Estimate CA\$1,500 - \$2,000



171

171
清青花花鸟纹八方瓶对
PAIR OF CHINESE BLUE AND WHITE
JARDINIERS, QING DYNASTY

Of octagonal section and generous proportion, the slightly waisted body rising to an everted mouth, the body painted with blossoming plum tree, chrysanthemum, scholar's rock, and birds, the unglazed base reveals the buff ware. H: 33.5 cm

Estimate CA\$800 - \$1,200



172

172
十九世纪 苹果绿天球瓶
CHINESE APPLE GREEN GLAZED VASE,
19TH C.

Of ovoid body rising to a cylindrical neck, covered all over in cracked green glaze, with unglazed foot ring reveals the buff ware. H: 29.5 cm

Estimate CA\$400 - \$600



173

173
黑釉双耳罐
CHINESE BLACK GLAZED POTTERY JAR

Of pear shape body supported on short everted foot, two handles attached on the shoulder rising to a cylindrical neck and buffed rim, the upper body covered with the rich black glaze which stops in the lower body. H: 22.5cm

Estimate CA\$300 - \$500



174

174
窑变釉小瓶《景德镇》款
CHINESE FLAMBE GLAZE VASE, W.
JINGDEZHEN MARK

Of pear shape rising to a recessed neck and a flaring rim, the exterior applied with a layer of violet-red glaze infused with milky blue streaks, the foot rim is unglazed and the base incised with Jingdezhen mark. H:14.8 cm

Estimate CA\$400 - \$700



175

175
 石雕云蝠纹砚连硬木盖盒
 CHINESE INKSTONE WITH HARDWOOD BOX AND COVER

Of pebble shape section, depicting a Ruyi shaped surface detailly carved bats and the clouds carvings formed an indentation on the narrower side, the black and dark plum color stone polished on the front with rough spots on the back, accompanied with a well carved fitted wood box. 16 x 13.5 x 1.8 cm

Estimate CA\$300 - \$500



176

176
 清 粉彩花鸟图大缸
 CHINESE FINELY PAINTED FAMILLE-ROSE JARDINIERE QING DYNASTY

Of radiant section rising to a galleried rim decorated with flower lappet and ket-fret band, finely painted around the exterior various flowers and branches, the unglazed base reveals the buff ware. 39 x 41 x 27 cm

Estimate CA\$1,800 - \$2,000



177

177
 硬木嵌明代玉牌插屏
 CHINESE JADE MING DYNASTY PLAQUE MOUNTED TABLE SCREEN

Of rectangular form carved in openwork style, depicting a dragon in diamond framed and latticework patterns background with Ruyi at the four corners, the stone of an even white tone, curly reticulated wood stand. 26.5cm x 26.2cm x 12cm with stand

Estimate CA\$800 - \$1,000



178

178
 老墨玉刀
 BLACK DRAK GREEN KNIFE

Of rectangular section plaque sharpened on one end and rounded on the other end, the stone of black and moss green color with russet inclusions. L: 8.2 cm, Thickness 0.4 cm

Estimate CA\$200 - \$400



179

179
 轧道胭脂釉开光碟 《大清光绪年制》款
 CHINESE PEACHBLOOM PLATE GUANGXU MARK

Of shallow round side to a flared rim, the interior covered with pink glazed and spiraling patterning with exception to three circular whiteouts each painted with peaches, the base with Guangxu mark. D: 23.3 cm

Estimate CA\$200 - \$300



180

180
 蓝地花鸟粉彩盘对 《大清道光年制》款
 PAIR OF BLUE GROUND FAMILLE-ROSE PLATES, DAOGUANG MARK

Of shallow sides supported on a short circular foot, the interior painted with bird and flowers on a sky blue background, the exterior painted with five bats on white background, the base with six-character Daoguang mark. D: 18.8 cm

Estimate CA\$400 - \$600



182

182
 白玉龙雕如意挂坠
 CHINESE WHITE JADE DRAGON PENDANT NECKLACE

Of shield section carved on one side a dragon with bifurcated leafy tail, the reverse incised with ruyi pattern, with a perforation drilled on the plaque attached with a beaded necklace strand, the stone of creamy whitewith russet streaks. L: 7 cm, Thickness: 14.22 mm, 68 grams

Estimate CA\$500 - \$800



181

181
 清 白玉鼻烟壶
 CHINESE WHITE JADE SNUFF BOTTLE, QING DYNASTY

Of shield form tapered down to short straight foot, the stone of white and celadon tone. H: 5.2 cm

Estimate CA\$400 - \$600



183

183
 龙泉小碟
 CHINESE LONGQUAN PLATE

Of short round sides to an everted rim, supported on a wide straight foot, covered all over in light green glaze except the buff-ware foot rim. D: 13.5 cm, H:4.3 cm

Estimate CA\$200 - \$400



184

184
 紫檀素身笔筒
 CHINESE ZITAN BRUSH POT

Of slightly waisted cylindrical form, the wood of dark brown tone. D: 9.5 cm, H: 11.5 cm

Estimate CA\$300 - \$500



185

185
古玉手鐲
CHINESE ARCHAISTIC JADE BRACELET

One archaic bangle with a midsection circular band, the stone of green tones with orange inclusions. Inner diameter 65.36 mm, Outer diameter 80.00 mm, 80 grams

Estimate CA\$600 - \$1,000



186

186
古玉手鐲
CHINESE ARCHAISTIC JADE BANGLE BRACELET

One archaic bangle, the stone of spinach green colour with interesting black inclusion. Inner diameter 58.38 mm, Outer diameter 79.08 mm, 52 grams

Estimate CA\$300 - \$500



187

187
翡翠手鐲 帶盒
CHINESE JADEITE BANGLE WITH BOX

One jadeite bangle, the stone of apple green color, accompanied by a cushioned box. Inner diameter 66.14 mm, Outer diameter 79.83 mm, 73 grams

Estimate CA\$600 - \$800

188
许尧 兰花 水墨纸本 挂轴
XU YAO, ORCHID

Orchid and butterflies. Ink on paper. Mounted on hanging scroll. Signed by the artist, with two seals. 33 x 68 cm

Estimate CA\$500 - \$800



188



189

189
项介石 (1893 -1964) 花鸟扇面 设色纸本
XIANG JIESHI (1893 -1964), FLOWERS AND BIRD

Painted flowers and a bird, signed with two artist seal, ink, and color on paper.

Estimate CA\$500 - \$800



190

190
清 五彩人物盘
CHINESE FAMILLE-VERTE 'FIGURAL' PLATE , QING DYNASTY

Painted with figures with hats, a border band of repeated patterns and four ribboned objects to the rim, the exterior with green and copper red patterning band to the rim. D: 25 cm

Estimate CA\$400 - \$600



191

191
18K 金镶钻红珊瑚戒指
DIAMONDS AND RED CORAL INLAID 18K GOLD RING

Set with a coral cabochon in the center, with small diamonds on the shoulder. Inner diameters: 18.00 mm, 5 grams

Estimate CA\$600 - \$800



192

192
青金石百宝嵌盘
CHINESE INLAID LAPIS PLATE

Shallow rounded sides rising from a low tapered foot put together by lapis lazuli pieces and other color stone on the interior depicting clouds and a dragon with flames. D: 21 cm

Estimate CA\$200 - \$400

193

蒋中正 (1887-1975) “寿” 水墨洒金红笺 书法挂轴
JIANG ZHONGZHENG (1887-1975), CALLIGRAPHY

Signed Jiang ZhongZheng, with one artist's seal, ink on gold-flecked red paper, hanging scroll. 35.3 x 92.2 cm Provenance: Taiwan Immigrant Family

Estimate CA\$5,000 - \$8,000



193

194

迟斋鱼 水墨纸本 挂轴
CHI ZHAI, FISH

Depicting a fish, titled and signed by the artist with one artist's seal, ink on paper, hanging scroll. 33.2 x 94.3 cm

Provenance: Taiwan Immigrant Family

Estimate CA\$800 - \$1,200



194



195
吉云 人物故事 设色纸本
挂轴
JI YUN, FIGURAL SCENE

Depicting a figure riding on a donkey accompanied by an attendant, signed by the artist with one seal, ink and color on paper, hanging scroll. 46.5 x 170 cm

Provenance: Taiwan Immigrant Family

Estimate CA\$600 - \$800



196
吉云 人物故事 设色纸本
挂轴
JI YUN, FIGURAL SCENE

Depicting a figure sitting under two pine trees holding a book in the hand, signed by the artist with one seal, ink and color on paper, hanging scroll. 46.5 x 171 cm

Provenance: Taiwan Immigrant Family

Estimate CA\$800 - \$1,000



197

197
清 哥窑双耳水洗 带座
CHINESE GE-TYPE WASHER WITH STAND,
QING DYNASTY

Sturdily potted of ovoid form, two ears flanked on the side, the body with celadon glaze and covered with russet crackles. the unglazed foot ring reveals the buff ware, accompanied with a fitted wooden stand. H: 13 cm

Estimate CA\$800 - \$1,200



198

198
玉镯柄刺绣手挽包
CHINESE EMBROIDERY PURSE WITH JADE
BANGLE HANDLE

The bag embroidered on both side with peacock and bat surrounded by butterfly and floral decorations. Bag W: 27 cm, L: 33.5 cm, Bangle inner D: 5.8 cm

Estimate CA\$200 - \$400



199

199
冰梅小瓶
CHINESE BLUE AND WHITE 'PRUNUS'
VASE

The baluster body rising from an everted base to a short straight neck, the body covered with white blossoming prunus against a blue ground. H: 23.5 cm

Estimate CA\$200 - \$400



200

200
晚清 粉彩大花尊
CHINESE FAMILLE-ROSE VASE, LATE QING DYNASTY

The baluster body surmounted by a trumpet neck, the body painted with colorful floral sprays and branches and leaves. H: 57.2 cm

Estimate CA\$400 - \$600



201

201
烧蓝拉丝珊瑚手镯
ENAMELLED CORAL BRACELET, QING DYNASTY

The bangle mounted with a carved flower coral in the center encircled by a Shou character band and bats decoration on the side in brown and blue tone enamel, accompanied with a box. Inner diameter 5 x 6 cm, 29 grams

Estimate CA\$1,500 - \$2,000



202

202
创汇期 剔红盖盒
CHINESE CARVED CINNABAR LACQUER BOX, 60S-70S

The body carved with stem meandering peony above a petal lappet band, black lacquered interior and base, with a matching fitted cover. D:6.3 cm, H: 7.2 cm

Estimate CA\$200 - \$400



203

203
硬木巧雕莲蓬盖盒
CHINESE HARDWOOD 'LOTUS SEED POD' BOX AND COVER

The box vividly carved and the cover drilled with holes to mimic the shape of a lotus seed pod, the wood of dark red color. D: 8 cm, H: 4.5 cm

Estimate CA\$200 - \$400



204

204
清 瓷制仿石纹笔架山
CHINESE CELADON AND RUSSET GLAZE BRUSH REST, QING DYNASTY

The brush rest modeled in the form of a scholar's rock, the body glazed in celadon and the edges glazed in brown, the unglazed base reveals the buff ware. 6 x 17 x 7.5 cm

Estimate CA\$200 - \$400



205

205
老水晶笔架山
CHINESE OLD CRYSTAL BRUSHREST

The brush rest modeled in the mountain form, the polished stone of clear transparency. 4 x 13.5 x 3.8 cm

Estimate CA\$200 - \$400



206

206
清 青釉堆白大盘
CHINESE CELADON-GLAZED WHITE-SLIP CHARGER, QING DYNASTY

The charger of a deep rounded body with an everted mouth painted on the exterior four plants (junzi) depicting the plum blossom, the orchid, the bamboo, and the chrysanthemum in white glazed on a celadon ground. D: 20cm, H: 4.5 cm

Estimate CA\$600 - \$1,000



207

207
白地矾红缠花纹棒槌瓶
CHINESE IRON RED-GLAZED ROULEAU VASE

The cylindrical body painted on the exterior copper-red patterned lines of continuous orchid scrolling foliage and scrolling bands on a white ground. H: 46.5 cm

Estimate CA\$1,200 - \$1,800



208

208
粉彩棒槌瓶对《洪宪年制》款
PAIR OF FAMILLE ROSE VASES, HONGXIAN MARK

The cylindrical body painted with poney, and begonia flowers with scholar's rock, the unglaze foot ring reveals the buff ware and the base with four-character Hongxian Mark. H: 25.5 cm

Estimate CA\$400 - \$600



209

209
明「文昌聖君」坐像连木座
AN ANCIENT CHINESE EMPEROR 'WENCHANG' STATUE, MING DYNASTY

The deity, possibly Wenchang dressed in a reverential pose his joined hands holding a hu tablet, wearing a long plaited robe with a serious face framed by trimmed hair extending in two long strands over his pendulous earlobes and cords issuing from his crown, hollowed from the base, the figure sat gracefully on a fitted extrusion wood stand, with perforation at the back. H: 21cm

Estimate CA\$2,000 - \$2,400

210

14K 黄金镶红宝石钻戒
RUBY AND DIAMOND INLAID 14K GOLD RING

The design of a ribbon with diamonds mounted in the middle, accompanied with a box and certification. Inner diameter: 17 mm, 4.29 grams

Estimate CA\$500 - \$900



210

211

14K 黄金镶钻石戒指
DIAMOND INLAID 14K GOLD RING

The design of hands holding heart crown, handcrafted, accompanied with a box and certification. D: 19.5 mm, 8.9 grams

Estimate CA\$400 - \$700



211



212

212
玉柄宝石镶嵌圆镜
JADE DRAGON BELT HOOK HANDLE GEM INLAID MIRROR,
QING DYNASTY

The frame with inset raised enamels depicting phoenix and butterfly amidst flowering peony against a stippled ground, a pale-celadon jade belt hook carved as a dragon with two chilong mounted for a handle 24.5 x 11.5 x 2.1 cm

Estimate CA\$3,000 - \$5,000



213

213
十九、二十世纪 广目天王唐卡
TIBET THANGKA
OF VIRUPAKSA, 19-20TH C.

The Heavenly King of the West holding onto his snake and miniature pagoda. Framed 53 cm x 73 cm

Estimate CA\$1,000 - \$1,500



214

214
明 玉鸭摆件
CHINESE JADE DUCK CARVING, MING DYNASTY

The jade carved with the shape of a mandarin duck, along with lotus leaves, the stone transcend from white to a russet and grey color. 6.3 x 3.5 x 2 cm

Estimate CA\$3,000 - \$5,000



215

215
素身玉璧 带座
CHINESE JADE BI DISC WITH STAND

The jade of circular form pierced with a central aperture, the stone of celadon tone with russet inclusions, accompanied with a fitted wooden stand. D:6.7 cm, Thickness 8.83 mm

Estimate CA\$300 - \$500

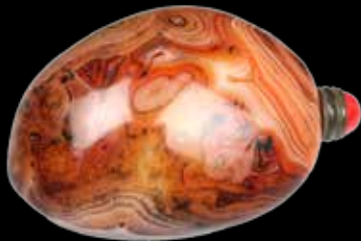


216

216
木雕圆珠项链
CHINESE WOOD CARVED BEADS NECKLACE

The necklace comprising of 37 finely carved wooden beads, each carved with different themes, including figures, flowers, and trees. L: 62 cm, 58 grams

Estimate CA\$400 - \$600



217

217
清 卵石形鼻烟壶
CHINESE STONE SNUFF BOTTLE, QING DYNASTY

The organic shape smooth pebble form stone snuff bottle features complex patterns of ripple in a mixed color of orange and russet and white with intriguing black spots, accompanied with fitted stopper. H: 7.6 cm

Estimate CA\$300 - \$500



218

218
玉 '结' 挂件
CHINESE CROSS KNOT PENDANT

The plaque carved in a knot resemblance, pieced with eight holes around and square aperture in the center, the stone of ochre yellow tone with russet inclusions. 5.5 x 5.5 x 0.96 cm

Estimate CA\$300 - \$500



219

219
18K 铂金戒指
18K PLATINUM RING

The ring with a center round brilliant cut diamond weighing 0.55 carats and side cut weighing 0.13 carats, with Dundas Gemological Laboratory certification. Inner diameter: 17.75 mm, 2.5 grams

Estimate CA\$600 - \$800



220

220
清 暗刻青釉凤尾尊（有孔）
CHINESE INCISED CELADON VASE
(DRILLED), QING DYNASTY

The rounded body rising from a splayed foot to an elongated neck and flared rim, carved around the body flowers and foliate scroll, decorated with a Ruyi band on the shoulder, incised with eight characters on the neck, all over celadon glazed, with a hole on the base. H: 29 cm

Estimate CA\$600 - \$800



221

221
黄杨木雕如意
A CHINESE BOXWOOD CARVED RUYI
SCEPTRE

The scepter in the natural wood rich patina color, lively carved in high relief Ganoderma plant and spots imitating the gnarled texture of branch. L: 32 cm

Estimate CA\$400 - \$600



222

222
螭龙白玉带钩
CHINESE WHITE JADE DRAGON BELT HOOK

The semi-translucent white jadeite carved with a Chi-long confronting a dragon head terminal, the underside carved with a circular buckle. 1.8 x 11.5 x 2.5 cm

Estimate CA\$400 - \$600



223

223
白玉扳指三件
SET OF THREE CHINESE JADE THUMB RINGS

The set comprised of three cylindrical form jade thumb ring: a plain thumb ring of pale white tone; a carved thumb ring depicting figures and Ganoderma growing from the landscape; an openwork carved thumb ring depicting a phoenix and a dragon in the design. Inner diameter 2.17 cm, 45 grams; 2.2 cm, 48 grams; 2.26 cm, 29 grams

Estimate CA\$400 - \$600



224

224
玉摆件一组两件
SET OF TWO JADE CARVINGS

The set comprised of two carvings: a pig carving, the stone of celadon tone; a openwork fishes carving, the stone of white to celadon. 4 x 2.5 x 1.4 cm; 4.7 x 3.5 x 2.3 cm

Estimate CA\$300 - \$500



225

225
瓷雕两件一组
CHINESE PORCELAIN FIGURES AND DOG

The set comprising of a porcelain dog and two porcelain figures, both glazed in various colors and the unglazed base revealing the buff ware, one with a hole on the base. Porcelain dog 9.5 x 6.2 x 4.1 cm

Estimate CA\$400 - \$600



226

226
木底座六件
SET OF SIX WOODEN STANDS

The set comprising of six wood stands with in various sizes and colors. Wides length 18.5 cm

Estimate CA\$200 - \$400



227

227
清 茶叶末釉暗刻龙纹长颈瓶
TEA DUST GLAZE DRAGON LONG NECK
VASE , QING DYNASTY

The globular body supported on a slightly flared foot and rising to a tall cylindrical neck, the body incised with dragon and covered in uneven tea dust glaze, the unglazed foot ring reveals the buff ware. H:23.7 cm

Estimate CA\$200 - \$400



228

228
民国 象生紫砂及梨形小壶一组
SET OF ZISHA OBJECTS AND TEAPOT,
REPUBLIC PERIOD

The set includes a set of purple clay items, a shortly rounded plate, and ten snacks-like imitated items; a pear-shaped teapot with a dome cover with two character mark on the base. D: 12.5 cm; H: 7 cm

Estimate CA\$500 - \$800



229

229
18 K 红珊瑚耳环
RED CORAL INLAID 18K GOLD EARRINGS

The set of two earrings suspending a pear-shaped red coral drop mounted in 14 karat gold, the back with kidney ear wires closure. Total 5 cm long, 3 grams (each)

Estimate CA\$600 - \$800



230

230
清 螭龙如意玉水盂
CHINESE JADE CARVED CHILONG BRUSH WASHER , QING
DYNASTY

The shallow jade brush washer overall in Ruyi-form. accompanied with two Chilong on each side, the stone of an even celadon tone, accompanied with a fitted box. 8.9 x 6 x 2 cm

Estimate CA\$1,500 - \$2,000



231

231
英石摆件
CHINESE YING SCHOLAR'S ROCK

The rock accented with ridges and crevices, of a black color patinated to an ebony sheen, accompanied with a carved wood stand. H: 34 cm

Estimate CA\$500 - \$800



232

232
波兰蜜蜡手串
POLISH AMBER BRACELET

The strand comprised 9 polish amber bead, the stone of pineapple yellow with russet incision, accompanied with a cushioned box. Inner diameter: 5 cm, 44 grams

Estimate CA\$600 - \$800



233

233
民国 酸枝瘿木面小案
CHINESE BURLWOOD & SUANZHI ALTAR TABLE, REPUBLIC P.

The three panels inlaid rectangular top with two curving sides set into a mitered mortise and tenon frame over a cut-out apron and four legs. 41 x 122.2 x 181.8 cm

Estimate CA\$1,200 - \$1,800



234

234
蜜蜡吊坠、胸针两件
CHINESE AMBER BROOCH AND PENDANT

Two amber accessories: a brooch of a compressed irregular shape, the polished stone of honey-orange tone with some transparency; a pendant with perforation drilled through, the stone of muster-yellow with white inclusions. L: 6.8 cm, 0.6 thickness; L: 6.3 cm, H: 3.2 cm

Estimate CA\$300 - \$500



235

235
白玉雕件对
PAIR OF CHINESE JADE AUSPICIOUS BEAST CARVINGS

Two carved jade overall in pale celadon tone, carved with dragons and Ganoderma and toad and coin. H: 2.3 cm; H: 3.4 cm

Estimate CA\$200 - \$400



236

236
清玛瑙小雕件对
PAIR OF CHINESE RED AGATE CARVINGS, QING DYNASTY

Two polished stone of deep orange-red color detailed carved in the form of a toad clinging on a squash; a mature mammal laying beside a small mammal holding a Ruyi branch. H: 2.3 cm; H: 1.9 cm

Estimate CA\$300 - \$500



237

237
晚清银锁两件
TWO CHINESE SILVER LOCKS, LATE QING DYNASTY

Two silver locks: a Ruyi shape lock, hang with carved pendant, carved to the front face with a flowering peony branch and to the reverse with three characters reading Baijia Shuo script, incised with two characters Jiyu seal on the top; And an ancient long type lock, decorated with blue cloisonne enamel medallion flowers and Ri and Yue characters with the Shuo character inscribed on the top. L: 8 cm 42 grams ; L: 8 cm 37 grams

Estimate CA\$400 - \$600



238

238
鼻烟壶两件
GROUP OF TWO CHINESE SNUFF BOTTLES

Two snuff bottles, of flattened ovoid form painted inside with houses, with a stopper; of elongated flattened ovoid form flanked beast masks, painted inside insects and calligraphy, with a stopper. H: 10 cm; H: 9cm

Estimate CA\$200 - \$400



239

239
琉璃猴子大象摆件两件
SET OF TWO GLASS MONKEY AND ELEPHANT CARVINGS

Two vividly carved animals, a storming elephant, the stone with mixed tones of grey and white and russet; a monkey, the stone color mixed with an orange and pink tone. H: 7.5 cm; H: 4.5 cm

Estimate CA\$500 - \$800

240
紫水晶鸭 带座
AMETHYST DUCK CARVING WITH STAND

Vividly carved in the form of a crouching duck with feet on the base, the stone of semi-transparent violet-purple tone, accompanied with a fitted wood stand. 11 x 6.7 x 4.5 cm

Estimate CA\$300 - \$500



240



241

241
青白玉福寿纹盖盒
CHINESE CELADON JADE CARVED BOX AND COVER

Of round sides rising from the short foot with lotus carving on the body, and a fitted cover incised with a Shou character circled by five bats, the stone of pale grey tone with dark streaks. D: 5 cm, H: 2.7cm

Estimate CA\$200 - \$400

242
青瓷童子拜观音像
CHINESE CELADON GLAZE GUANYIN FIGURE

A celadon glazed Guanyin figure seated in royal ease with two attendants at the Buddhist figure's left and right side, overall covered in celadon glazed with the face and Buddhist chest and footing unglazed, hollow out from the base. 21.2 x 27.5 x 11.5 cm

Estimate CA\$1,000 - \$1,500



242



243

243
孔雀石雕件三件
GROUP OF THREE MALACHITE CARVINGS

A group of three malachite carvings in the form of: a rectangular fitted box and cover; a irregular shape brushwasher; and a frog carving. Box 8 x 5.7 x 3 cm; Brush wash 8.6 x 6.5 x 1.3 cm; Frog H: 2.2

Estimate CA\$200 - \$400



244

244
晚清 料器堆绿瓶
GREEN AND WHITE PEKING GLASS FLOWER VASE, LATE QING DYNASTY

Of baluster body tapering down to a straight black footring, decorated with green flowers and butterflies on the white vase, with black thickened mouth rim. H: 24.9 cm

Estimate CA\$400 - \$600



245

245
地毯
A WOOL RUG

A rug depicting birds and flowers on the grey background and navy blue border. 6 x 10 foot

Estimate CA\$300 - \$500



246

246
装饰摆件三件
GROUP OF THREE ORNAMENTS

A set of three gold tone objects: a clear ball on a golden dragon stand; a gold-framed pumpkin carriage; a globe with golden lining. H: 13 cm; H: 12.5 cm; H: 33 cm

Estimate CA\$300 - \$500

TERMS & CONDITIONS

STUNNING ARTS GALLERY AND AUCTION INC AS AGENT

The lots listed in this catalog will be offered by Stunning Arts Gallery and Auction Inc as owner or as agent for consignor(s) subject to the following terms and conditions. By bidding at auction you agree to be bound by these Conditions of Sale.

BEFORE THE AUCTION

Prospective buyers are strongly advised to personally examine any property in which they are interested before the auction takes place. All lots are sold "AS IS" and without recourse and neither Stunning Arts Gallery and Auction Inc nor its consignor(s) makes any warranties or representations, express or implied with respect to such lots. No statement, whether written or oral, and whether made in catalog, or in supplements to the catalog, an advertisement, a bill of sale, a saleroom posting or announcement, the remarks of an auctioneer, or otherwise, shall be deemed to create any warranty, representation or assumption of liability. It is the responsibility of prospective purchasers to inspect or have inspected each lot upon which they wish to bid, relying upon their own advisers, and to bid accordingly.

BIDDING IN THE SALE

Refusal of Admission Stunning Arts Gallery and Auction Inc has the right, at our complete discretion, to refuse admission to the premises or participation in any auction and to reject any bid.

Registration before Bidding

A prospective buyer must complete and sign a registration form and provide identification before bidding. We require bank or other financial references.

Bidding as Principal

To bid in person, the bidder will need to register for and collect a numbered paddle before the auction begins. Proof of identity will be required. Should you be the successful buyer of a lot, please ensure that your paddle can be seen by the auctioneer and that it is your number that is called out. All lots sold will be invoiced to the name and address in which the paddle has been registered and cannot be transferred to other names and addresses. When making a bid, a bidder is accepting personal liability to pay the purchase price, including the buyer's premium, all applicable taxes and all other applicable charges

Absentee Bids

If the bidder cannot attend the auction, we will be happy to execute written bids on your behalf. Absentee bids in writing must be submitted to Stunning Arts Gallery and Auction Inc at least 24 hours prior to the sale by letter or fax. In the event of identical bids, the earliest received will take precedence.

Reserves

Each lot may be subject to an unpublished reserve which may be changed at any time by agreement between the auctioneer and the consignor.

Auctioneer's Discretion

The auctioneer has the right at his or her absolute and sole discretion to refuse any bid, to advance the bidding in such a manner as he or she may decide, to withdraw any lot, and in the case of error or dispute, and whether during or after the sale, to determine the successful bidder, to continue the bidding, to cancel the sale or to re-offer and resell the item in dispute. If any dispute arises after the sale, our sale record is conclusive.

Successful Bid

The highest bidder acknowledged by the auctioneer will be the purchaser. In the case of a tie bid, the winning bidder will be determined by the auctioneer at his or her sole discretion. In the event of a dispute between bidders, the auctioneer has final discretion to determine the successful bidder or to re-offer the lot in dispute.

AFTER THE SALE

Buyer's Premium

In addition to the hammer price, the buyer agrees to pay

Stunning Arts Gallery and Auction Inc a buyer's premium and the applicable sales tax added to the final total. Each lot sold is subject to a premium of 20% of the successful bid price of each lot up to and including \$50,000 and 18% on any amount in excess of \$50,000 as part of the purchase price. Online bidding is subject to a 23% buyers premium.

Deposit

The contact information provided by the purchase must be accurate and true. The auctioneer reserves the right to request a deposit to be provided before bidding and will be used against any and all purchases made at the auction.

Taxes

Unless exempted by law, the buyer is required to pay HST on the total purchase price including buyer's premium. For international buyers, taxes are not applicable when purchases are shipped out of country. Items shipped out of Ontario, the buyer is required to pay taxes as per the tax status of that province, whether is HST or GST.

Payment

Immediately after the purchase of a lot, the buyer shall pay or undertake to the satisfaction of the auctioneer with respect to payment of the whole or any part of the purchase price requested by the auctioneer, failing which the auctioneer in his sole discretion may cancel the sale, with or without re-offering the item for sale.

The buyer shall pay for all lots within 7 business days from the date of the sale, after which a late charge of 2% per month on the total invoice may be incurred or the auctioneer, in his sole discretion, may cancel the sale. The buyer shall not become the owner of the lot until paid for in full. Items must be removed within 10 days from the date of sale, after which storage charges may be incurred.

Each lot purchased, unless the sale is cancelled as above, shall be held by the auctioneer at his premises or at a public warehouse at the sole risk of the buyer until fully paid for and take away.

Payment for purchases must be by cash, INTERAC direct debit (Canadian clients in person only), certified cheque (U.S. and Overseas not applicable), bank draft, electronic transfer (fee applies), and VISA or MASTER or AMERICAN EXPRESS card.

Should the item not be paid for within the time limit stated, the auctioneer, without limitation of the rights of the consignor and the auctioneer against the buyer, may resell any of the articles affected.

SHIPPING

Shipping is provided at the buyers' expense. Stunning Arts Gallery will provide a list of shippers. The purchased items will be released with the buyers' written consent and until payment has been made in full. Shipping, packing and handling is at the entire risk of the buyer. SAG will have no liability of any loss or damage to such items.



STUNNING ARTS GALLERY & AUCTION

竞投出价表 ABSENTEE/TELEPHONE BIDDING FORM

表格应以墨水笔填写，并电邮、邮寄或传真至本公司

FORMS SHOULD BE COMPLETED IN INK AND EMAILED, MAILED, OR FAXED TO THE AUCTION HOUSE

Name: 名字:				Telephone	Absentee
Phone: 联系电话:		Email: 电子邮件:			
Address: 地址:					
City: 城市:		Province: 省:		Postal Code: 邮编:	
Credit Card Number: 信用卡号码:				Expiry Date: 到期日期:	
Name on Card: 持卡人姓名:				CVV: 卡后三位安全码:	
Billing Address (if different): 账单邮寄地址:					

IMPORTANT 重要事项

Please note that the execution of written and telephone bids is offered as an additional service for no extra charge, and at the bidder's risk. It is undertaken subject to Stunning Arts' other commitments at the time of auction, Stunning Arts, therefore cannot accept liability for failure to place such bids, whether through negligence or otherwise. 请注意书面及电话竞投是免费提供之附加服务，风险由竞投人承担，而该等服务会在本公司于拍卖时其他承诺之限下进行；因此，无论是由于疏忽或其他原因引致，本公司无需就未能做出该竞投承担责任。

NUMBER 编号	DESCRIPTION 名称	MAXIMUM BID 最高竞价
		CAD\$
		CAD\$
		CAD\$
		CAD\$
		CAD\$
		CAD\$
		CAD\$

DEPOSIT 押金

All absentee bidder and telephone bidder are requested by Stunning Arts to deliver to Stunning Arts a deposit of CAD\$2,000 or such higher amount as may be determined by Stunning Arts, and any financial references, guarantees and/or such other security as Stunning Arts may require in its absolute discretion as security for the bid. 本公司可要求电话竞拍者以及最高单价竞拍者完成预先登记程序及交付本公司 2,000 加币或其他由本公司决定之更大金额的定金及任何财务状况证明，担保或/及其他由本公司可全权酌情决定要求的抵押作为参加本公司竞投的保障。

The contract between the buyer and the seller is concluded on the striking of the auctioneer's hammer, and payment of the purchase price for any lot and any buyer's expenses is due 7 business days after the conclusion of the auction. 买家及卖家之合约于拍卖官击锤时订立，而阁下作为买家必须于拍卖会结束后 7 个工作日支付拍买品之买入价及任何买家费用。

TELEPHONE NUMBER DURING THE SALE 拍卖联络电话:

FOR WRITTEN/FIXED BIDS 书面竞投

- Bids will be executed for the lowest price as is permitted by other bids or reserves. 竞投将以尽可能低之价格进行
- Where appropriate your written bids will be rounded down to the nearest amount consistent with the auctioneer's bidding increments. 如适当时，阁下之书面竞价将会被大概调整至最接近拍卖官递增之竞投金额

FOR TELEPHONE BIDS 电话竞投

- Please clearly specify the telephone number on which you may be reached at the time of the sale, including the country code. We will call you from the saleroom shortly before your lot is offered. 请清楚注明于拍卖期间可联络阁下之电话号码，包括国家号码。我们会于阁下之拍买品竞投前致电给阁下。

I agree that I am bound by the Condition of Business for Buyer and the Authenticity Guarantee which are published in the catalogue for the sale on purchases at auction that I make. If any bid is successful, I agree that all sales are subjected to a 20% buyer's premium added to the hammer price, 18% on any bids over CAD \$ 50,000. 本人同意接受图册内列明之给卖家的规则及保证书，是次拍卖会上的一切交易均受以上条款所约束。若竞投成功，本人愿意支付附加成交价之上的 20% 买家佣金，或 50,000 加币以上成交的拍品之 18% 的买家佣金。

I consent to the use of this information and any other information obtained by Stunning Arts Gallery and Auction in accordance with the Guide for Absentee Bidders and Conditions of Business. I am aware that all telephone bid lines may be recorded. 本人同意 Stunning Arts Gallery and Auction 使用本人资料及根据给委托竞投者指引与给买家业务规则内而取得至其他资料。本人明白所有电话竞投会被录音。

SIGNED 签署

DATE 日期