

001
白釉執壺

A porcelain Ewer, of ovoid body rising from a spreading foot to a tall neck and flaring rim, modelled with a gently curved spout on one side and a strap handle on the other extending from neck to the shoulder, the exterior carved with florals in low relief, applied with an egg-white colour, height 24 cm

\$100-\$200



002
粉彩人物八角葫蘆瓶

An unusual large octagonal double-gourd vase, decorated with cowboys riding on buffaloes, boys at play with elders in a garden scene, height 60cm, diameter 20cm

\$300-\$500



003
清黃地茄綠龍紋盤一對 雍正款

A pair of porcelain saucer dishes, the centre of each dish decorated with a green dragon chasing a 'flaming pearl', a six character Yongzheng mark on the base, 25.5cm.

\$200-\$300



004
青花石榴紋梅瓶 大清康熙年制款

A meiping shape vase, of a baluster body, broaden on shoulder, slightly waisted to the flared foot base, with short neck and narrow opening. The exterior decorated with pomegranate trees, banded with geometrical pattern along the shoulder and foot, Kangxi six character mark on the base, height 21cm

\$100-\$200



005
官窯開片圓盤

A guan ware crackle glazed plate, a few dents on the plate, diameter 25.5 cm

\$100-\$200



006
均窯大碗

A fine splashed jun ware bowl incurved towards the rim, covered overall with a blue crack glaze splashed with a purple patch on the interior, the foot rim unglazed revealing the chocolate-coloured ware, diameter 16.8cm

\$200-\$300



007
三彩印花大盤

A sancai-glazed dish of circular form, the inner painted with glazed green and blue phoenix design pattern and waving clouds on the overall yellow-coloured ground, the unglazed base, showing the pale buff body, diameter 27.6cm

\$100-\$200



008
青瓷雕龍塔式罐

A tower-shaped celadon jar with cover, height 25.5 cm

\$100-\$200



009
茶葉末釉大盤

A large porcelain plate, of shallow side supported on a short foot, overall covered in teadust glaze, diameter 26 cm

\$100-\$200



010
白瓷斗笠碗

A conical bowl, of steep sides rising from a short circular foot ring, overall cover in white glaze, diameter 17.5 cm

\$100-\$200



011
青花小酒杯一套十個

A set of ten small blue and white cups, painted with a man fishing in river landscape, height 2.8 cm

\$100-\$150



012
青花壽字蟹紋盤

A porcelain plate, the exterior decorated with shou character in the centre and crabs around in green, diameter 17.8 cm

\$100-\$150



013
粉彩公雞碗四個

Four pieces of porcelain bowls, decorated with rooster and peony on the exterior, diameter 17cm

\$100-\$150



014
民國小碗, 杯, 盤四件

Four pieces of small bowls, plates, and cups, Republic Of China Period, the base of the bowl marked with Jian Hua Ci Ye Gong Si mark in red, diameter 14 cm

\$100-\$200



015
均窯小水洗

A small jun ware washer, of compressed circular form, supported on a shallow tapered foot, overall covered in blue glaze with subtle splashes of pink tone, diameter 8.8 cm

\$100-\$150



016
青花壽字紋大盤帶盒

A large celadon plate, the exterior painted with shou character in the centre, the base marked with six-character Qianlong seal in blue, diameter 37 cm

\$300-\$500



017
龍泉窯花紋大盤帶盒

A large longquan plate, with lobed rounded sides rising from a short tapered foot to a broad everted barbed rim, carved on the interior with peony blossoms, the wide rim further incised with a double layer of lotus petals, the base left in the biscuit and burnt buff, diameter 35 cm

\$300-\$500



018
汝窯水砂盤口

A ruyao water sand washer, overall applied in light-blue glaze, suffused with network of dark crackles, diameter 22 cm

\$100-\$200



019
建窯小盞一對

The deep rounded sides rising from a short straight foot to a lipped rim, covered overall in a orange-black glaze falling short of the foot to reveal the orange-brown body, with 'oil spots' streaks of pale-turquoise-blue underglazed or greyish-brown underglazed, diameter 10.5 cm

\$100-\$200



020
霽藍釉執壺一對

A pair of round covered ewers, painted overall in blue glaze, height 15cm.

\$100-\$200



021
青花人物棒槌瓶

A blue and white rouleau vase, with slightly tapered body rising to a cylindrical neck and everted mouth rim, painted with figures in court scene and clouds, the rim and neck painted with bands of chevron and circles, the base inscribed with Kangxi six-character mark in blue, height 23.5 cm

\$300-\$400



022
德化白瓷雙耳爐

A blanc-de-chine censer, the bomba body rising to a flared rim flanked by handles, supported on three low conical feet, overall applied with an even layer of white glaze, leaving the bottom of feet unglazed, diameter 7.5 cm, height 5 cm

\$200-\$300



023
白瓷蟠龍瓶

A porcelain vase, of compressed globular body raising from a short splayed foot to a tall cylindrical neck, the sloping sides moulded in relief with a sinuous dragon, applied overall with white glaze, height 13.5 cm

\$200-\$300



024
哥窯彌勒佛

A geyao porcelain figure, depicted a standing Maitreya Buddha in long ropes, open to expose the chest and ample belly, covered in white glaze suffused with brownish crackles, height 16 cm

\$500-\$600



025
紫砂掛袖賞瓶

A zisha vase, of knopped neck, overall covered in a turquoise glaze with deep purple splashes suffused with a matrix of crackles, height 16 cm

\$100-\$200



026
豇豆紅釉賞瓶 大明宣德年製款

A porcelain vase, of plain ovoid form, overall applied with peachbloom glaze, the base marked with Xuande six-character mark in blue, height 9 cm

\$200-\$400



027
豇豆紅荸薺扁瓶

A porcelain vase, of compressed bulbous body and a slender neck, the red glaze draining to white at the rim and body, height 11 cm

\$200-\$300



028
哥窯小瓶

A geyao vase, of rounded shoulders and tapering body surmounted by a sloping neck, set, overall covered in celadon glaze suffused with matrix of brownish crackles, height 12 cm

\$200-\$300



029
牛血紅大口杯

A porcelain cup, of deep sides rising from the tapered foot to a flared rim, applied overall with a lustrous ox-blood glaze thinning at the mouth in white tone, diameter 8.5 cm, height 9.5 cm

\$200-\$300



030
白瓷花口杯

A porcelain cup, of foliate rim, the exterior inscribed with twigs, overall covered in white glaze, unglazed footring fired to a buff brown swirl pattern, diameter 11 cm, height 6.5 cm

\$200-\$300



031
程協盛制 青花小杯一對

A pair of blue and white cups, of deep 'U'-shape with flared rim and a short straight foot, painted with landscape and buildings, the base marked with Cheng Xie Sheng Zhi in blue, diameter 7.2 cm

\$200-\$300



032
雕瓷小象

Raised on a rectangular platform, the elephant turning its head to one side, the whole covered in flamba glaze, 7 cm x 4 cm x 8 cm

\$200-\$300



033
青花花鳥小碟

A blue and white saucer dish, of shallow sides with barbed rim, the interior painted with flowers and birds, suffused with a matrix of brown crackles, diameter 11 cm

\$100-\$200



034
暗刻花鳥紋白釉膽式瓶 大清乾隆年製款

A porcelain vase, supported on a flared foot rising to a slender ovoid body, curving to a narrow cylindrical neck and flaring to a trumpet mouth, the exterior molded with floral sprays, the base marked with Qianglong six-character, height 12 cm diameter 14 cm

\$300-\$400



035
青釉四方雙耳瓶

A porcelain vase, of rectangular body rising from a straight foot, flanked by a pair of lion-head-form loop handle at the shoulder, the neck moulded with bow-string bands, overall covered in celadon glaze, the base revealed buff body, height 17.5 cm

\$200-\$300



036
五彩魚草紋撇口膽瓶 大明萬曆年製款

A porcelain vase, of pear-shaped body tapering to a slightly flared mouth, the body painted with red and blue fishes, the base marked with Da Ming Wanli six-character mark within double-circles, height 16 cm

\$400-\$600



037
天青釉葵花洗

A ru ware lobed brush washer, with rounded sides rising to a slightly flared petal-lobed rim, covered overall with a pale blue-green glaze, the base with a sticker, a minor chip on the rim, diameter 8.2 cm

\$500-\$600



037A
清中期 青花喜上眉梢象耳賞瓶一對

A blue and white elephant ears handles vases, of rounded form with paintings of magpies standing on plum trees singing, the scene stands for the meaning of happiness, xi shang mei shao, four-character Qianlong Nian Zhi on the base, height 19.5 cm

\$10,000-\$20,000



038
龍泉三足爐

A longquan tripod censer, the compressed globular body supported on three short cabriole legs, the mouth set with a pair of hoop handles, applied with an even layer of green glaze, diameter 9 cm, height 10 cm

\$300-\$400



039
明吉州汞爐帶木蓋

A Ming Jizhou jar with a pair of moulded animal handles flanking the everted rim and bulging body, decorated with Chinese script along the exterior, covered in turquoise glaze, accompanied with a wood cover, diameter 12 cm, height 13.5 cm

\$300-\$400



040
鬥彩纏枝花卉罐

A jarlet, of ovoid body with high shoulder, connecting to a short waisted neck, the exterior vividly painted in red, green, yellow and aubergine of four interlocking peonies and scrolling vines, Da Ming Zhengde mark on the mouth rim, unglazed base, diameter 8.5 cm, height 8 cm

\$500-\$600



041
豆青釉青花水洗

A celadon-glazed brush washer, with low rounded sides, incurving to a short mouth, the exterior painted with shades of cobalt blue with landscapes, unglazed base, diameter 12 cm

\$200-\$300



042
黑金釉印盒

A porcelain box, of compressed circular form and cover, overall covered in opaque dark brown tone, diameter 7.5 cm

\$200-\$300



043
雕漆剔紅山水紋瓶

A cinnabar lacquer carved vase, of baluster form, the body carved in low relief with five scholar figures in a mountainous landscape, the interior covered in black lacquer, height 22 cm

\$200-\$300



044
雕漆剔紅山水人物紋長方盒

A cinnabar lacquer box, in a rectangular section, the cover carved with two figures in a rocky landscape, the sides carved with continuous aesthetic pattern, the interior covered in black lacquer, 10.4 cm x 7.2 cm x 3.9 cm

\$200-\$300



045
雕漆剔紅山水人物蓋盒

A cinnabar lacquer box, in rectangular form, the cover carved in low relief with scholar figures in the mountainous landscape all within key-fret borders, the sides carved with composite floral scrolls, the interior and base covered in black lacquer, the base inscribed with six-character, 14 cm x 9.4 cm x 4.8 cm

\$300-\$400



046
雕漆剔紅山水方盒

A cinnabar lacquer carved box, of square section, the cover carved in low relief with mountainous landscape, the sides carved with key fret and aesthetic pattern, the interior and base covered in black lacquer, 15.2 cm x 15.2 cm x 6 cm

\$200-\$300



047
白玉璧

A pale celadon disc, of circular form, carved to both sides around the central aperture with comma spirals pattern, set each side symmetrically with carving of phoenix, diameter 7.3 cm

\$200-\$300



048
青玉璧

A celadon disc, carved with an auspicious dragon on top, climbing around an archaic disc, diameter 7 cm

\$200-\$300



049
二十四年朱文震款 田黄石印章

A tianhuang stone seal, of rectangular section, dated and signed Zhu Wenzhen on one side, the seal face inscribed with two characters, 6.8 cm x 1.5 cm x 0.9 cm, weight 17.2 gram

\$800-\$1,200



050
玉扳指印章

A jade archer's ring seal, of hollow cylindrical form, with one faceted side inscribed with eight character, height 2.8 cm

\$500-\$800



051
白玉筆舔

Carved of leaf-shaped, the stone of pale celadon colour, height 7.5 cm

\$300-\$500



052
白玉雙安玉珮

A rectangular plaque, carved in openwork of two ducks and lotus leaf, 5.2 cm x 4 cm

\$300-\$500



053
白玉卧馬

Carved a horse in a recumbent position with saddle on it, height 6.5 cm

\$1,000-\$1,500



054
提樑飯籠

A bamboo three tiers basket, comprised of three octagon compartments with a cover, the wood handle decorated with folk tale carvings, 67 cm x 39 cm x 49 cm

\$300-\$500



055
沉香手串

A bracelet, composed of fifteen spheres small incense beads, bead diameter 16 mm, 19.7 gram

\$5,000-\$7,000



056
多寶木格

A wood box, of rectangular form, divided into open compartments of varying sizes, 45.8 cm x 71 cm x 9.5 cm

\$400-\$500



057
多寶木格

A wood box, of rectangular form, divided into open compartments of varying sizes, 62.8 cm x 45.7 cm x 8.7 cm

\$400-\$500

058

紫檀座漆畫硯屏

A Zitan wood table screen, of rectangular shaped plaque form decorated on one side with a flower vase and varied fruits and flowers, 11cm x 21cm x 29cm

\$500-\$1,000



059

雕花銅手爐

A bronze hand warmer of a compressed globular body with round double handle and engraving rabbit and peonies lid cover, height 11.5cm, diameter 18cm

\$300-\$500



060

太平有象燭台

A bronze elephant is standing on a wood stand with its head turned, carrying a stopper on its back in the form of a candle holder, the body inlaid with coral and turquoise, 9.5cm x 4cm x 10cm

\$500-\$1,000



061

漢藏風格銅鑲金法器

A tibetan religion gold bronze apparatus, 38cm x 22.5cm.

\$2,500-\$3,000

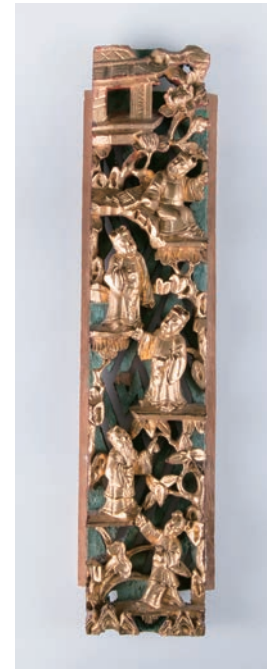




062
金木掛屏

A gilt wood panel, openwork carved in high relief with figures in the court, flower sprays and birds, 97 cm x 44.5 cm.

\$1,000-\$1,500



063
金木人物小掛屏

A gilt wood panel, openwork carved in high relief with five figures, 32.8 cm x 7.3 cm

\$100-\$200



064
金木刀馬人物圓掛屏

A gilt wood panel, of circular openwork carved in high relief with warriors in battle scene, 26 cm x 24.5 cm

\$200-\$400



065
金木花鳥掛屏

A large gilt wood panel, openwork carved in high relief of deer, birds, monkey in the wood, mounted in a gilt frame, 44.3 cm x 68 cm x 4 cm

\$500-\$1,000

066

竹岡生 (1777-1835) 山水 立軸

Mountainous landscape, signed Tanomura Chikuden, with two seals of the artist, ink and watercolour on paper, hanging scroll, 119cm x 51.5cm.

\$1,000-\$1,500

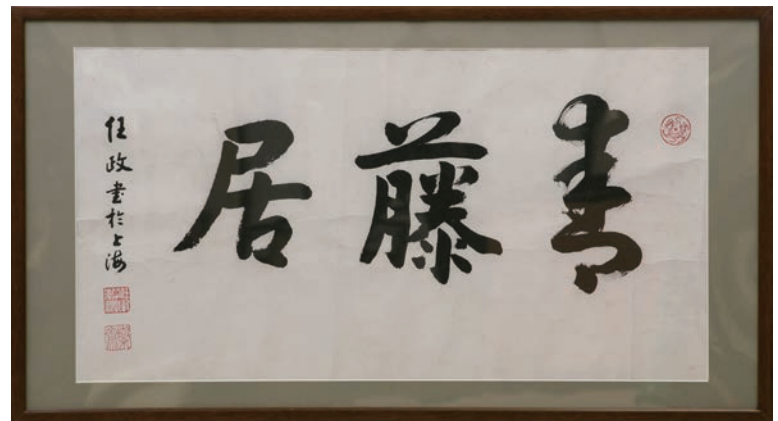


067

任政 (1916 - 1999) 書法

Calligraphy, signed Ren Zheng with three seals of the artist, ink on paper, with frame, 71 cm x 39 cm

\$1,500-\$2,000



068

民國 扇面兩幅帶框

Two pieces of fan paintings of calligraphy and floral sprays, with two seals of the artist together, ink and watercolour on paper, with frame, 33.5 cm x 63.5 cm

\$500-\$1,000





069
屈兆麟 (1866-1937) 花鳥扇面帶框

A fan painting of two birds perched upon a blossoming prunus limb, underneath the shelter of banana leaves in the moonlight, signed Lum Watt Shiu with two seal of the artist, ink on paper, with frame, 62 cm x 36.8 cm

\$1,500-\$2,000



070
潘素 (1915-1992) 工蟲花鳥扇面帶框

A fan painting of two cicadas on morning glory leaves and roses, dated and signed Pan Su with two seals of the artist, ink and watercolour on paper, with frame, 37.2 cm x 68 cm

\$5,000-\$8,000



071
清 花蝶圖兩幅帶框

Two pieces of butterflies and floral paintings, with one seal of the artist on each painting, watercolour on silk, with frame, 26.5 cm x 28.5 cm

\$800-\$1,200



072
倪田 (1855-1919) 人物故事 斗方

A senior and a child on a boat, signed Ni Tian with one seal of the artist, watercolour and ink on paper, 37.5 cm x 25 cm

\$500-\$800

073

金建吾 (民國) 人物 鏡心 設色紙本

A scholar and a lady seated under the tree, signed Jin Jian Wu with four seals of the artist, watercolour and ink on paper, 38 cm x 90 cm

\$500-\$800



074

二十世紀 四君子瓷版掛屏四幅

A set of four famille rose plaques, depicting a landscape scene of lotus, peonies, plum blossoms, and chrysanthemums, with frame, 26 cm x 79 cm x 4 cm

\$500-\$700



075

二十世紀 仕女圖瓷版掛屏四幅

A set of four famille rose plaques depicting a landscape scene of lady figures, 31.5 cm x 47 cm x 4 cm

\$300-\$500





076
海黃對眼手串

One Hainan pearl bracelet, comprised of 12 beads, weight 55.5 grams, bead diameter 2.0 cm

\$1,500-\$2,000



077
印尼奶油白沉香手串

One Indonesian white incense bracelet, comprised of 17 beads, weight 7.5 grams, bead diameter 1.2 cm.

\$800-\$1,200



078
越南藥沉香手串

One Vietnamese medician incense bracelet, comprised of 14 beads, weight 31 grams, bead diameter 1.5 cm

\$1,000-\$1,500



079
硬木方桌五件套

A set of hard wood table with four square-shaped stools, table 89.5 cm x 89.5 cm x 81 cm, stool 37.5 cm x 37.5 cm x 48 cm

\$3,000-\$4,000



080
紫檀百寶嵌壽字立屏 (後配硬木底座)

A zitan wood screen, of rectangular form with carved wood stand, featuring red-lacquered Shou character on front and gilt painting of landscape on back, with white hardstone and jade insets of immortals and cranes on front, 123 cm x 85 cm

\$3,000-\$5,000



081
壽山石 "萬福" 印章

A shoushan stone seal, small pebble of irregular mountain form, the seal face carved with two characters Wan Fu, the stone of vermillion-red tone, height 5.5 cm

\$100-\$200



082
青田石雙安印章料

A soapstone seal, of rectangular section, carved two birds on the top, height 9.8 cm

\$500-\$800



083
壽山石印章

A soapstone seal, of natural form, the seal face carved with characters, height 7.6 cm

\$500-\$1,000



084
民國 粉彩觀音像

A famille rose porcelain figure, depicting a seated Guanyin with one knee raised, the base marked with one seal of the artist Ceng Longsheng, height 27.5 cm

\$500-\$800



085
清 刻畫木盒帶蓋

A floral box with cover, Qing Dynasty, diameter 22 cm

\$200-\$400



085A
出口創匯期 漆雕黑圓盒兩件

Two pieces of export black lacquer circular boxes with covers, carved on the exterior through layers of black and cinnabar-red with band of ruyi scrolls repeated on both sides, diameter 10 cm / 6 cm

\$500-\$800



086
石灣瓷 鐵拐李 劉澤綿款

A shiwan pottery, depicting seated Tieguai Li wearing voluminous robes open to expose the chest, holding a crutch in his left hand, carrying a gourd and hat on his back, one LiuZemian seal mark inside the unglazed base, height 26.5 cm

\$500-\$800



087
石灣瓷 李白

A small shiwan pottery figure depicts a famous poet Libai in a cross legs sitting position, wearing a long robe, holding a cup, in a meditation mood with a fitted wood stand, height 7.5cm, width 7.5cm

\$200-\$300



088
石灣瓷 勇士像

A shiwan pottery, depicting an ancient warrior wearing a long robe riding on a Kirin beast on a wood stand, one small piece is missing on his crown part, height 26.5cm

\$500-\$800



089
石灣瓷 牧童騎牛

A shiwan pottery porcelain figure, depicting a cowboy climbing on the back of a buffalo, one cowboy's leg is broken, height 18cm.

\$100-\$200



090
石灣窯 瓷枕

A Shiwan porcelain pillow glazed in greyish crackles with a green enamel, 11 cm x 10 cm x 16.5cm

\$300-\$400



091
木雕人物山子

A wood carved figures boulder, height 14cm

\$100-\$200



092
黃楊木佛龕木雕

A boxwood niche for carved statues of buddhas, height 12 cm
\$300-\$400



093
黃楊木笑佛

A boxwood carved laughing Buddha depicting the seated Buddha holding a ruyi sceptre in his left hand, dressing in long robe and reveling his ample belly, height 7 cm
\$300-\$400



094
清 玄壇伏虎 (武財神) 木雕

A carved wood fortune Wu figurine, height 27 cm
\$300-\$400



095
黃楊木達摩

A boxwood carved Daruma, height 20 cm
\$300-\$400



096
木雕官人像

A carved wood scholar, height 22 cm
\$300-\$400



097
民國 酸枝小方台

A small suanzhi table with square shaped top, a drawer is mounted under above associated legs, 28 cm x 28 cm x 53 cm

\$300-4500



098
20 世纪 花梨小案

A superb huali alter table, the plain rectangular top with flared end piece. The gently curved apron terminating in shaped flanges at the junction with the legs. The circular legs united by stretchers of rounded and waved form, height 87cm, length 127cm, width 40cm

\$500-\$700



099
20 世纪 紫檀太師椅一對

A pair of zitan wood carving armchairs, 20th century, height 107 cm, width 66 cm

\$8,000-\$1,5000



100
酸枝麻將桌帶凳

A set of suanzhi mahjong table with four drawers and four round stools with marbles on top, 75 cm x 78 cm x 78.5 cm; 33.5 cm x 45 cm

\$1,500-\$2,000



101
銅胎掐絲琺瑯仕女像

Portrayed a standing lady dressed in a layered skirt and long robes, wearing an elaborate necklace and hair accessories, the lady decorated in blue, green, red, yellow and white enamels, height 32 cm

\$300-\$500



102
銅胎掐絲琺瑯小瓶

A pear-shaped vessel raised on a splayed foot and surmounted by a tall neck, the turquoise ground decorated with enamelled flowers issuing scrolling tendrils, the neck with two further lotus, the base incised with a four-character LaoTianLiZhi, height 15.3 cm

\$500-\$800



103
運財童子硬木雕

Depicting a boy seated on a goose and a ruyi scepter on her hand, height 23.5 cm with stand

\$500-\$800



104
檀香木觀音

Depicting Guanyin dressed in long robes, raised on a double lotus base, height 40 cm

\$500-1,000



105
清 徐啟明款 石灣瓷達摩騎象

Depicting Daruma riding on an elephant, replaced had been done, the back with seal of the artist Xu Qiming, height 68 cm

\$1,000-\$2,000

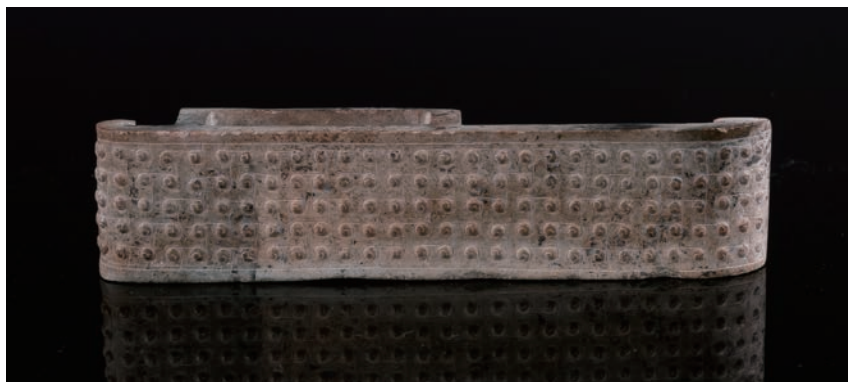


0106
漢八刀玉蟬

Carved of cicada with protruding eyes, the stone with white and brown inclusions, Han dynasty, height 6.5 cm, weight 35.5 gram

玉蟬是一種常見的古代玉器。在古人看來，蟬是清高聲遠、潔身自好的象徵，因此蟬的造型很早就為中國先民所使用，生以為佩，死以為琯。本拍品用料講究、質地上乘用和田白玉精琢而成，形制古樸、簡潔、線條幹練、粗獷有力，起刀收刀乾淨利落，拋光、打磨非常講究神韻盡在，所謂“漢八刀”在此作品上發揮極致，表層形成油潤亮澤的包漿，局部土沁古樸自然、均勻，代表漢玉蟬的最高工藝，在中國玉器史上佔有重要地位，漢以後不再覓有此風格的玉器，具有極高的收藏價值。

\$20,000 - \$25,000



107
漢 玉勾連穀紋璏

A rectangular scabbard slide with an incurved end, the top incised with grain pattern, the stone of beige tone with dark brown inclusions, Han dynasty, height 11.2 cm

\$20,000-\$25,000



108
白玉辟邪神兽

Carved of a beast, the stone of a white colour with russet inclusions, height 6 cm

\$1,500-\$2,000



109
山水玉珮

A rectangular plaque, carved in low relief on one side with mountain landscape, connected to a chain, 4.7 cm x 2.4 cm

\$100-\$200



110
白玉籽料雕鹅把件

Rendered in the form of a plump goose with its head reared and holding a sprig of prunus in its beak, its wings and long feathers incised on both sides of the body, the stone of a white colour with russet inclusions, height 4.2 cm

\$500-\$1,000



111
青玉盒

A circular box and cover, the cover carved with landscape, and the base inscribed four character, diameter 5.5 cm

\$200-\$300



112
青田石印章

A qingtian stone seal, of rectangular form and square cross section, the sides carved literati landscapes, the seal face carved with two characters, the stone of a apple green tone, height 5.8 cm

\$300-\$500



113
綠泥紫砂壺

A zisha teapot, in form of globular body, decorated with a fish and lotus, one seal on inner lid, the base incised with China Yixing Ceramics Museum mark, height 8.5 cm

\$300-\$500



114
翠竹軒款 紫砂壺

A zisha teapot, of compressed globular body flanked with round handle and short spout, with lotus shape form knob on cover, five-character artist mark on base, height 8.5cm, diameter 11cm

\$1,500-\$2,000



115
周桂珍款 紫砂壺

A zisha teapot, of globular body, the knob on cover and side decorated with ruyi shape, the inner lid, hand and base incised with artist seal mark Zhou Guizhen, height 7.5cm, diameter 10cm

\$1,500-\$2,000



116
南嶺山莊款 紫砂壺

A zisha teapot, of compressed globular body flanked with round handle and short spout, with Nan Ling Shan Zhuang Zhi Zhu Si Ting, height 3.5cm, diameter 9cm

\$3,000-\$4,000



117
紫砂壺

A Zisha teapot, in form of bell shape body flanked with tail resemble handle and beast resemble spout, with human head knob on lid, three seal mark of artist on the inner lid and the base, height 7.5 cm

\$100-\$200



118
紫砂壺 陶中款

A zisha teapot Zhong Guo Yi Xing Zhi Zao, height 5.5

\$200-\$300



119
青花小碗 雍正款

A blue and white bowl, its exterior decorated with Three Friends of Winter (bamboo, pine and prunus), the base inscribed with Yongzheng six-character mark, diameter 6.5 cm

\$200-\$300



120
清 龍泉三足爐

A celadon-glazed tripod censer raised on three feet, the censer is covered in a soft green, the base reveals a brown-orange colour, diameter 6 cm

\$300-\$400



121
民國 唐子禎 粉彩人物故事六角雙耳瓶一對

A pair of famille rose hexagonal vases, flanked with a pair of handles in pomegranate shape, painted with figures socializing in a social event, height 23.5 cm

\$300-\$500



122
清末 無雙譜對盤

A pair of rose porcelain plates, the interior decorated with figures alternating inscriptions from the manual Wu shuang pu, diameter 20cm.

\$500-\$1,000



123
西廂記故事木掛屏

A wood hanging panel decorated with a scene from Romance of the Western Chamber, width 65cm, length 96cm.19 cm

\$300-\$500



123A
民國 紅樓夢故事貝雕連座

A carved mother-of-pearl shell plaque, Republic period, exquisitely carved with scene from 'The Dream of Red Mansion' story, accompanied with a wood stand, diameter 21.2 cm

\$400-\$600



124

清 青花折枝紋大瓶

A large blue and white porcelain vase, of baluster form, surmounted by a tall cylindrical neck terminating in a straight mouth, painted to the exterior in soft tones of cobalt-blue with various detached floral sprays and bamboo leaves, below a narrow floral band at the shoulder, diameter 15.5 cm, height 37 cm

\$10,000-\$15,000



125

沉香佛掛墜

An incense pendant, carved in low relief on one side of seated laughing Buddha, height 4.8 cm, 7.2 gram

\$800-\$1,200



126
清 青花花鳥大盤 一對

A pair of blue and white plates, painting with floral sprays and birds, the base marked with an artistic mark within a double-circles, diameter 23.8 cm

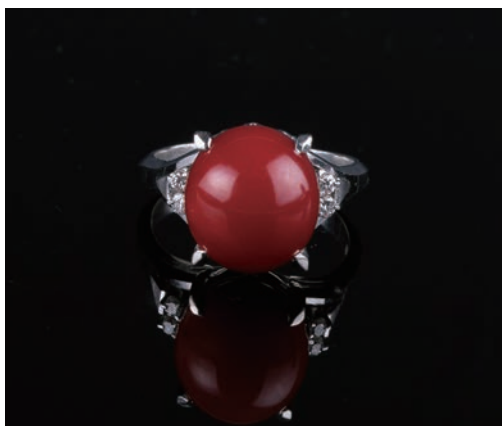
\$500-\$1,000



127
翡翠心形胸針白金 A 貨

A brooch, set in white gold and of foliate design on top attaches with a translucent stone of emerald-green colour, shaped as a heart, diameter 2.8 cm

\$2,000-\$2,500



128
阿卡紅珊瑚鉑金戒指

A ring set with one round Aka red coral surrounded by diamonds, platinum 900, diameter 12 mm

\$2,000-\$2,500



129
古白玉孔雀挂件

A white jade carving pendant, depicted a fanning of a peacock's tail, height 3.2 cm

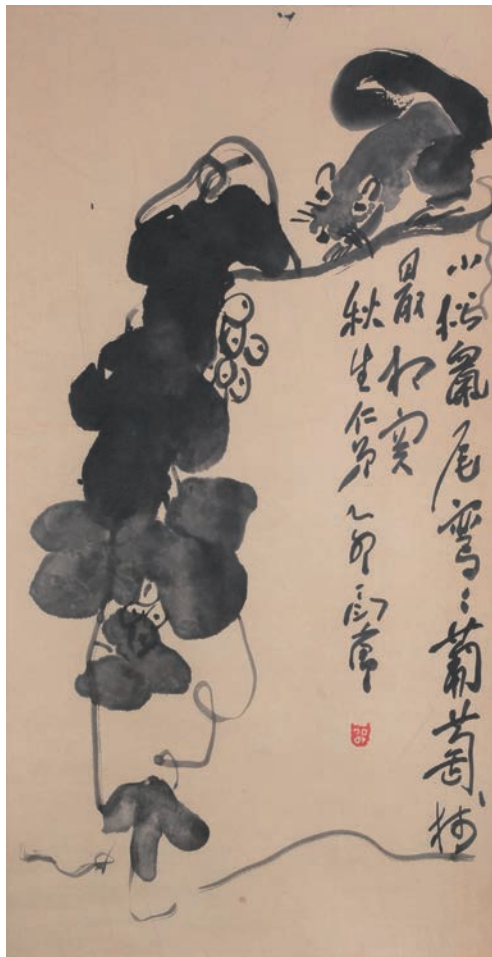
\$1,500-\$2,000



130
清中期 和田白玉瓦子

A very fine carved Chinese white jade in a shape of a tile form, it shows pale-celadon in colour, with clean even tone, 8.5 cm x 5 cm x 0.8 cm

\$500-\$1,000



131
丁衍庸 (1902-1978) 松鼠 鏡心 水墨紙本

A squirrel perched atop of grape vine, signed Ding Yanyong with one seal of the artist, ink on paper, 33 cm x 61 cm

\$1,000-\$2,000



132
丁衍庸 (1902-1978) 蛙竹 鏡心 水墨紙本

Frog and bamboo, signed Ding Yanyong with one seal of the artist, ink on paper, 30 cm x 60.5 cm

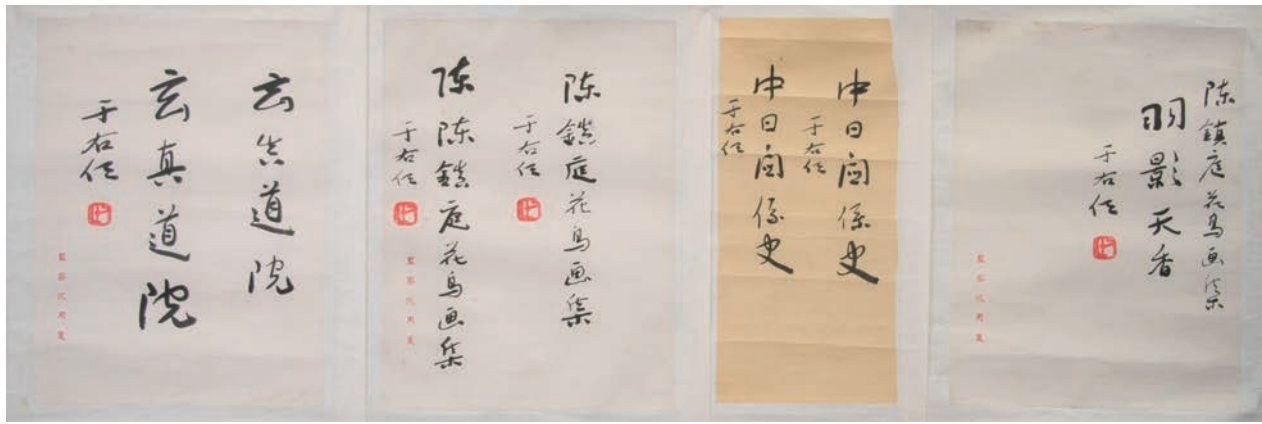
\$1,000-\$2,000



133
丁衍庸 (1902-1978) 魚蝦蟹 鏡心 水墨紙本

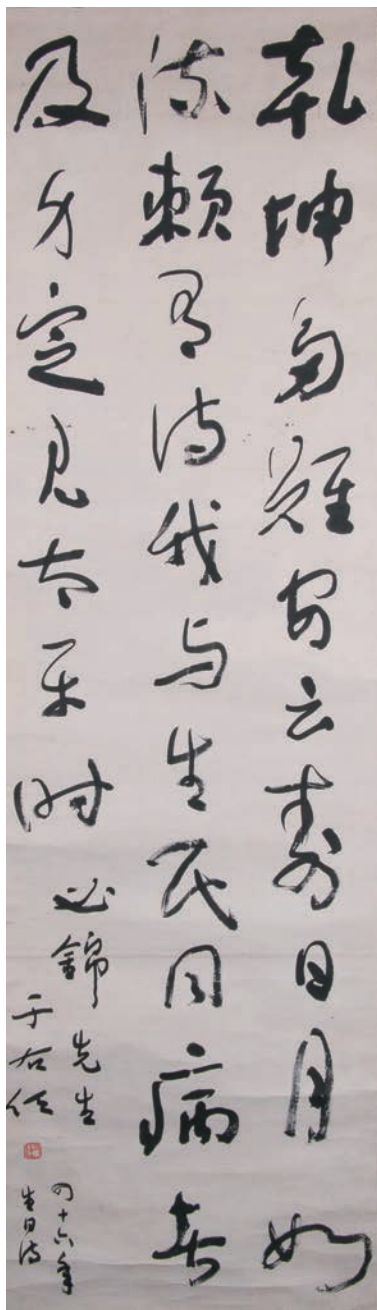
Fish, crab and shrimp, signed Ding Yanyong with one seal of the artist, ink on paper, 34 cm x 70 cm

\$1,000-\$2,000



134
于右任 (1879-1964) 書法信鑑四幅

Four pieces of calligraphies, signed Yu Youren with four seals of the artist together, ink on paper, size varies
\$2,500-\$3,000



135
于右任 (1879-1964) 書法條幅

Calligraphy, signed Yu Youren with one seal of the artist, 39 cm x 134 cm

上款人為周必錦先生，五六十年代任職台灣花蓮火車站站長，后僑居南加州。

\$15,000-\$25,000



136
**趙少昂 (1905-1998) 工蟲冊頁
 設色紙本 九開**

Album leaf of nine pieces, ink and colour on paper, 17 cm x 12.3 cm x 1.2 cm

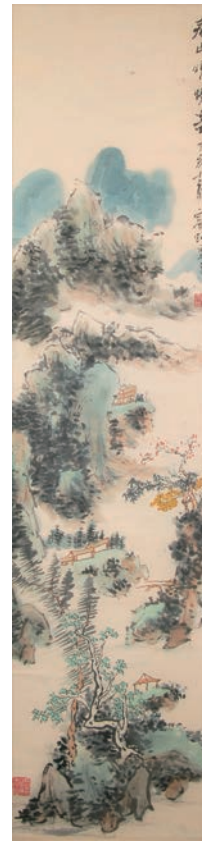
\$5,000-\$10,000



137
**清 華岳 (新羅山人) (1682-1756) 款 三羊開泰 鏡心
 設色紙本**

Three sheep, dated and signed Hua Lei with three seals of the artist, watercolour and ink on paper, 80 cm x 33 cm

\$1,000-\$2,000



138
黃賓虹 (1865-1955) 款 山水立軸 設色紙本

Mountainous landscape and pavilion, dated and signed Huang Binhong, with two seals of the artist, watercolour on paper, hanging scroll, 135.5cm x 32.5cm.

\$2,000-3,000



139
林清霓 (1914-1970) 山水 鏡心 設色紙本

River landscape, signed Lin Qingni with two seals of the artist, watercolour and ink on paper, 33 cm x 68 cm

\$1,000-\$2,000

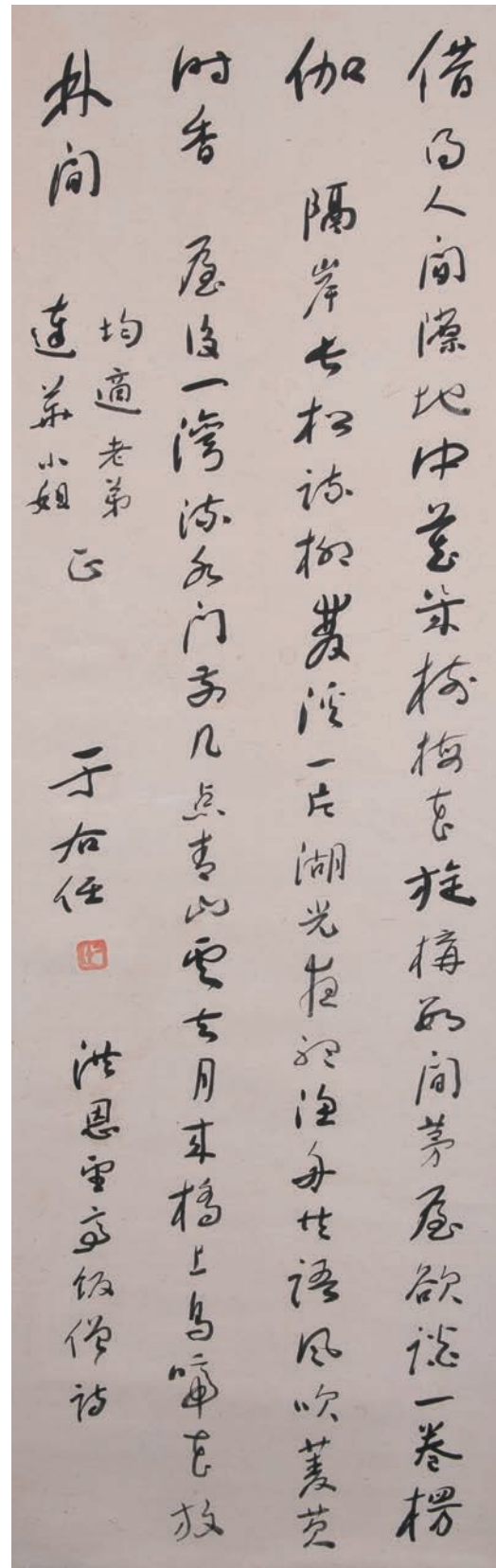


140
李超哉 (1906-2003) 蘭竹 鏡心 設色紙本

Bamboo, signed Li Chaozai with three seals of the artist, watercolour and ink on paper, 50 cm x 86 cm

上款人為南加州著名學者，台灣僑領黃均適先生 (Robert Huang)

\$1,000-\$2,000



141
于右任 (1879-1964) 書法條幅

Calligraphy, signed Yu Youren with one seal of the artist, 95 cm x 30 cm

上款人為南加州著名學者，台灣僑領黃均適先生 (Robert Huang)

\$10,000-\$20,000



142
愛新覺羅溥佐 (1918-2001) 柏竹冊頁 設色紙本 十一開

Album leaf of eleven pieces, ink and colour on paper, 44.7 cm x 31.9 cm x 1 cm

\$500-\$1,000



143
伍德懿 (1864-1928) 南極老人 立軸 設色紙本

Senior with a white beard, signed Wu Deyi with three seals of the artist, ink and watercolour on paper, hanging scroll, 44.5 cm x 86.5 cm

\$3,000-\$5,000



144
晚清 周培春 風俗畫冊頁 設色紙本 十開

Album leaf of ten pieces, ink and colour on paper, 45 cm x 31.8 cm x 1.2 cm

提簽為多倫多著名畫家單栢欽先生

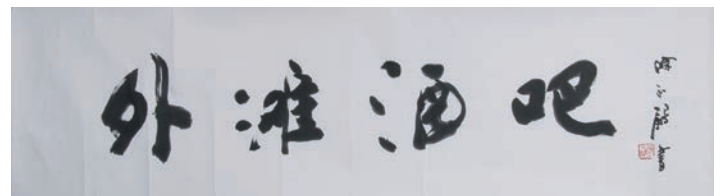
\$1,000-\$1,500



145
劉遜 (1958-) 山水 鏡心 設色紙本

Landscape, signed Lui Xun with two seals of the artist, watercolour and ink on paper, hanging scroll, 64.5 cm x 64.5 cm

\$300-\$500



146
陳永鏘 (1948-) 書法 外灘酒吧

Calligraphy, signed by Chen Yongqiang, with one seal of the artist, ink on paper, 39cm x 135cm

\$300-\$500



147
明 繡絲掛屏

A keshi panel worked in gold wrapped silk and polychrome silks with two deer in a landscape with ocean waves, dragons and cranes patterns, 118.5cm x 34.5cm without frame

\$3,000-\$4,000



147A
酸枝雕三鳳花几一對

A pair of suanzhi rosewood carved triple phoenix stands, 46cm x 46cm x 110cm

\$2,000-\$3,000



147B
酸枝葵形台一對

A pair of suanzhi rosewood tables, 52cm x 41cm x 76cm

\$2,000-\$3,000



147C
酸枝雙人扶手椅

A Suanzhi Rosewood Double Armchair, 106cm x 46cm x 90cm

\$1,500-\$2,000



148
孩兒面珊瑚 14K 金扣雙層項鍊

A coral necklace, comprised of numerous rounded pink coral beads, completed by a square 14K gold clasp, bead diameter 0.7 cm

\$800-\$1,000



149
清 德化白瓷爐

A Blanc De Chine Censer, of compressed circular form, with molded lion masks applied below the rounded rim of the wide mouth with grooved edge, and raised on a wide foot with molded rim, diameter 14.6 cm

Provenance: From a very famous Toronto antique collector H.H, Pao

此拍品為已故多倫多著名骨董收藏家 H.H, Pao 舊物

\$5,000-\$10,000



150
清 黃花梨文盤

A huanghuali tray in a form of rectangle, 18th Century, 37.5cm x 27cm.

\$1,000-\$2,000



151
清 瑪瑙荷葉型水洗帶座

An agate tray of lotus form finely carved with a curving design of flowers and millet stalks, comes with a beautifully carved wood stand, Qing dynasty, 6.5cm x 9cm

\$500-\$1,000



152
宋 建窯茶盞帶木座

A Jianyao tea cup, Song dynasty, of deep rounded sides rising from a short straight foot to a lipped rim, covered overall in a black glaze falling short of the foot to reveal buff body, diameter 9.5cm

\$300-\$600



153
清 德化白瓷觀音座像 何朝宗款

An exquisitely and skillfully modelled Guanyin, 18th Century, depicted sitting on a base with one leg hanging on the base, and the other one on the ground, the figure wearing a layered robe draped over softly rounded shoulders and opening at the chest to reveal a beaded lotus necklace, the face with a benevolent and peaceful expression rendered with the urna of wisdom, height 28cm

\$2,000-\$4,000



154
竹根雕壽星

A bamboo root carved figure, depicting a seated Shou Immortal holding a ruyi scepter in his hand, height 8 cm

\$100-\$200



155
清 珊瑚掛飾

A finely carved coral pendant depicting a mythical beast, Qing Dynasty, 3 cm

\$500-\$1,000



156
翡翠濟公挂件帶證書

A jadeite pendant, carved of Jigong with a gourd, and a dragon on the reverse side, accompanied with Grade A certificate issued by Hong Kong Gem Laboratory, width 3 cm, length 5.5 cm, thickness 16.33 mm

\$3,000-\$4,000



157
琥珀長鏈掛珠

One long amber necklace, weight 232 grams, bead diameter 13.95mm

\$500-\$1,000



158
玉奔馬擺件

A jade carving horse, of celadon tone, 14 cm x 5 cm x 8cm

\$2,000-\$3,000



159
粵繡兩件 松鶴延年

Two pieces of Cantonese embroideries, 362.5 cm x 108 cm / 86.5 cm x 67 cm

\$200-\$300



160
海黃頂級沉香手串

One top Hainan pearl incense bracelet, comprised of 13 beads, weight 42.5 grams, bead diameter 1.95 cm

\$20,000-\$30,000



161
玉雕佛手掛

A white jade carving, depicting foshou fingered citron and a monkey beneath, the stone of white tone with light russet inclusions, accompanied with a wood stand, height 8 cm without stand

\$3,000-\$5,000



162
銅鑲金釋迦佛坐像

A gilt bronze figure, seated in dhyanasana on a double-lotus base with the hands in bhumisparśamudra, clad in a diaphanous sanghati with beaded hems, the underside incised flori-form petals visvavajra mark, height 21 cm, 1223 gram

\$2,000-\$2,500



163
清 和田白玉吉祥如意四方牌

A hetian white jade, of rectangular section, carved in low relief to one side with a pine tree, scholar in a rustic hut and a child, the reverse with an inscription Ji Xiang Ru Yi, pierced for suspension, the stone in even colour, 5.9 cm x 4 cm

\$3,000-\$5,000



164
清 和田白玉吉祥如意圓牌

A hetian white jade, of oval section, carved shallow relief to one side with pond scene with fish and lotus, the reverse with an inscription Ji Xiang Ru Yi, the stone in even colour, 5.3 cm x 4.6 cm

\$800-\$1,200



165
古玉 雲蝠圓玉璧

A jade bi disc, of circular form with a central aperture, worked in low relief on each side with archaistic taotie scrolls, diameter 10.3 cm

\$3,000-\$5,000



166
紫水晶壽翁

An amethyst carved figure, depicting Shou Longevity immortal wearing long robes and holding a couplet Shou Bi Nan Shan on his hand, the base incised 24-7 mark, with fitted wood stand, height 14.5cm

\$200-\$300



167
蜜蠟胸針

An amber brooch, of tear-drop shape, with silver frame, the colour of egg yolk with a rich luster, 3 cm x 2.8 cm

\$200-\$300



168
玳瑁寬手鐲

A round bangle bracelet of tortoiseshell, diameter 5.3 cm

\$200-\$300



169
掐絲景泰藍首飾盒三件

Three pieces of cloisonné, two cases with covers, the exterior decorated with floral, one eggshell cloisonné, of egg form, enameled with floral designs on body with stand, height 4.3 cm

\$200-\$300



170
實木花紋小梳妝台

A small wood dressing case, of rectangle section with a pair of curved handles on both sides, painted with gilt flower patterns, containing a bust mirror and two drawers, 19.8cm x 15cm x 13.6cm

\$300-\$500



171
張敏杰 (1959-) 石頭寨系列版畫兩幅連框

Two pieces of engraving figure prints painted in 'Stone Village' themes, signed by Zhang Minjie and dated in 1990, 71.5cm x 58cm

\$500-\$800



172
清 青花纏枝蓮瓶

A compressed pear-shaped body, elegantly rising to a long and thick waisted neck and flared mouth, painted in deep underglaze-blue tones with a composite lotus and chrysanthemum scroll around the body, the neck accentuated with geometric leaf patterns and classic scroll borders below the rim, the foot reserved on a white porcelain ground and the base with a double circle mark, has been repaired, height 40cm, diameter 22cm.

\$3,000-\$5,000



173
清 青花人物大罐

The jar is well potted with broad rounded shoulders, painted around the outside with scholars socializing event scene, a double line borders around the rim of the jar, base is unglazed and with a very low foot rim, height 38.5cm, diameter 23cm

\$1,000-\$2,000



174
清 粉彩茶具一套九件

Nine pieces tea sets, painted with peonies and purple geometric patterns, tea pot height 12cm

\$500-\$1,000



175
清 粉彩茶具一套六件

Six pieces of famille rose tea sets, painted with landscape scenes, tea pot height 12cm

\$500-\$1,000



176
青花鶴紋罐

A blue and white jar, mid-Ming dynasty, the tapering body surmounted by a short waisted neck with a everted rim, the exterior painted with a board band of cranes amidst clouds, the unglazed base is burnt brownish-orange during the firing, height 19 cm

\$2,000-\$4,000



177
藍釉雙耳爐

One blue ground censer, the compressed globular body flanked by a pair of loop ears and supported on three short feet, the base is unglazed revealing the white body, H: 7 cm, D: 10.5 cm without stand

\$300-\$600



178
啟元堂款 粉彩花鳥一品鍋

A famille rose porcelain box with cover, of rounded sides with domed cover, the cylindrical body supported by four short feet and flanked by beast-head handles, painted with magpies perched on blossoming prunus, the unglazed base inscribed with a red four-character Qi Yuan Tang Zhi mark, diameter 25 cm, height 8 cm

\$400-\$600



179
豇豆紅釉太白尊

One peachbloom "bee-hive" waterpot, the hemispherical body contracting to a narrow waisted neck below an everted mouthrim, the exterior covered in a glaze of rich crushed-strawberry tone, the white base inscribed in underglaze blue with a double-ring mark, diameter 11 cm, height 11 cm

\$200-\$500



180
透雕花鳥金木

A gilt wood panel, comprised of eight rectangular wood panels, openwork carved with flower sprays and birds, overall set in a wood frame, the back with a framing gallery sticker from Hong Kong, 30 cm x 97 cm

\$300-\$600



181
花卉紋圓蓋盒

A porcelain box, of circular form and cover, the exterior painted with floral sprays in cobalt blue, overall covered in celadon tone, diameter 8 cm

\$300-\$500



182
白瓷水丞

A porcelain waterpot, of globular form rising from a short straight foot to an incurved mouth, diameter 8 cm

\$500-\$800



183
藍釉直頸膽瓶

A porcelain vase, of pear-shaped body, surmounted by a cylindrical neck, covered overall in an even deep blue glaze, unglazed base reveal buff body, height 13.5 cm

\$500-\$800



184
青花獅子滾繡球紋瓷枕

A blue and white porcelain opium pillow, of rectangular form, an openwork carved of cash motif on one end, the other end has an aperture, the exterior painted with cartouches of chilong within panels of plum blossoms, 14.5 cm x 12.7 cm x 6.4 cm

\$300-\$400



185
青花盆一對

A pair of blue and white bowls, the exterior painted with landscapes and flowers on cobalt blue ground, diameter 14.7 cm, height 10.9 cm

\$400-\$500



186
鎏金銅盒

A gilt bronze stem bowl with cover, of compressed globular form with dome-shaped foot rim, decorated with dragon and phoenix engravings, partially covered in patina, height 12 cm, diameter 12 cm

\$500-\$800



187
金玉滿堂款 蒜頭瓶

A porcelain garlic mouth vase, of compressed globular body with garlic-shaped mouth and splayed foot rim, the rim painted with character Shou, the body painted with dragon and phoenix amidst clouds, the base with a four-character seal mark Jin Yu Man Tang within a double-circles, diameter 13.5 cm, height 24 cm

\$500-\$800



188
青花大缸

A large blue and white jardiniere, of slightly flaring sides rising from a flat base, the exterior painted with two dragons amidst clouds on body, ruyi pattern on the mouth rim, height 15 cm, diameter 23 cm

\$300-\$500



189
康熙款 青花大筆海

A large blue and white brushpot, of cylindrical form, painted with continuous landscape and figures on boat, the base with six-character Kangxi mark on base, height 18 cm, diameter 20 cm

\$400-\$600



190
道光款 紅釉碗

A porcelain bowl, of rounded sides rising from a tapered foot, the interior painted with figures and clouds in cobalt-blue, the exterior covered in a copper-red glaze, the base with a six-character Daoguang seal mark in blue, diameter 14.8 cm, height 7.2 cm

\$500-\$1,000



191
木製古董車模兩件

Two pieces of wood carved antique car models, 47cm x 17.5cm

\$200-\$300



192
木製古董車模兩件

Two pieces of wood carved antique car models, 33.5cm x 12cm.

\$200-\$300



193
壽山石觀音立像

A shoushan stone carving, small pebble of irregular mountain form, depicting a standing Guanyin, incised with Chinese character of The Heart Sutra on the side, 18cm x 16.5cm

\$200-\$300



194
壽山石觀音坐像

A shoushan stone carving, small pebble of irregular mountain form, depicting seated Guanyin of her right knee raised, right hand laying on it, incised with Chinese character of The Heart Sutra on the side, 18cm x 19cm

\$200-\$300



195
料器梅花瓶

A fine green glass overlay vase, the body overlaid in green with double collars at the shoulder above branches of plum trees, the white base plain, height 13.5cm

\$100-\$200



196
料器玉壺春瓶

A red Peking glass yuhuchun vase, of pear-shaped body sweeping up to a waisted neck and a broad everted rim, supported on a short slightly splayed foot, richly applied on the exterior with a deep red glaze, the base inscribed with six-character mark, height 26 cm

\$2,500-\$3,000



197
壽山石臥羅漢

The Shoushan soapstone carving depicts an Arhat Luohan lying on a mat, sleeping with happy expression, while wearing long robe and holding prayer beads, the stone is of orange-yellowish color tone with stone veins, set on a fitted wooden stand, height 6.5cm, width 10cm

\$100-\$200



198
民國淺絳彩小碗

A Qianjiang small bowl, painted with figure and landscape, the base with four-character seal mark in red, height 5.3cm, diameter 10cm

\$100-\$200



199
清 青花筆筒

A blue and white brushpot, of cylindrical form rising to a flaring rim, painted with continuous panoramic of waterside landscape, unglazed base, diameter 14.5 cm, height 15 cm

\$300-\$400



200
金木雜件四件

Four pieces of gilt wood panels with different shapes, height 47 cm

\$200-\$300



201
海泡石煙斗十件連框

A magnificent collection of meerschaum tobacco pipes in varied shapes, hand crafted by masters in Austria, pipe size length 18 cm, frame size 96 cm x 44 cm

\$3,000-\$4,000



202
黃釉圓盤

The dish is raised on a low tapering foot ring and has rounded sides flaring to an everted rim, and covered inside and out with a glaze of rich egg-yolk yellow, diameter 20 cm

\$200-\$300



203
均窯大盤一對

A pair of jun ware dish saucers covered in an opaque bluish glaze, diameter 22 cm

\$200-\$300



204
豇豆紅釉油錘瓶

A porcelain vase, of globular body rising from a short straight foot to a long cylindrical neck, applied overall with peachbloom glaze, suffused with green spot moss along the neck, height 19 cm

\$200-\$300



205
高足盤

A porcelain stem bowl, of deep rounded sides rising to a flared rim, supported on a tall slightly spreading hollow foot, a red mark in the center, diameter 7.5 cm, height 7.5 cm

\$300-\$400



206
博古紋水洗

A blue and white brushwasher, of shallow compressed body with bulging sides and a wedged-foot, incurved at the mouth, the exterior painted with precious objects in the "100 Antiques" motif, diameter 8.2 cm

\$200-\$300



207
綠釉梅花紋小罐帶木蓋

A porcelain jar, of rounded body connecting to a short upright mouth, decorated with blossom, overall covered in green glaze suffused with brown crackles, diameter 9.5 cm, height 10 cm

\$100-\$200



208
粉彩人物印泥盒 乾隆年制款

A famille rose ink box, of compressed circular form and cover, the cover painted with an elder and a child playing in the garden landscape, the base marked with Qianlong four-character mark in red, diameter 6.8 cm

\$100-\$200



209
青瓷小缸

A pottery jar, of cylindrical form, the covered overall with an beige glaze stopping irregularly above the foot to reveal the buff orange tone stoneware, suffused with a matrix of brown crackles, diameter 9 cm, height 6.3 cm

\$200-\$300



210
料器花卉紋瓶 雍正年制款

A Peking glass vase, painted with flowers, mantis and craggy rock, the reverse with inscription and three seals of the artist, the base marked with Yongzheng four-character mark within double-squares, height 22 cm

\$300-\$400



211
綠地白花賞瓶

A porcelain vase, of slightly tapering cylindrical vase, with sloping shoulder and waisted neck, the exterior painted in cobalt blue with branches of plum blossom against a rich green ground, the base marked with China in red, height 25.2 cm

\$100-\$200



212
清 哥窯對盤

A pair of geyao plates, of shallow sides supported on a short circular foot, overall applied with a brown glaze suffused with a network of black crackles, diameter 23.1 cm

\$200-\$300



213
清 青花壽字對盤

A pair of blue and white plates, the interior decorated with special characters pattern and a longevity character in the center, diameter 25 cm

\$200-\$300



214
灰藍釉圓罐一個

A porcelain jar, of globular body with incurved mouth rim, overall covered in greyish blue tone suffused with a network of white crackles, height 13.5cm

\$100-\$200



215
藍地貼白花大盆

A large punch bowl painted with white leaves in blue glazed colour within and brown glazed colour outside and base of the bowl, diameter 27cm

\$200-\$300



216
粉彩雙龍喜字黃地蓋盒

A yellow-ground dragon box and cover of circular form, the central medallion of the domed cover painted with two dragons amidst clouds and double happiness emblems amongst the exterior, all painted reserved on a vivid yellow ground, the fitted box rising from a straight footrim to an unglazed inner lip, the interior and the base covered in a white glaze, the underside inscribed in red with a four-character seal mark Tongzhi, diameter 23cm

\$200-\$300



217
雙龍柄三彩陶瓷執壺

A sancai-glazed pottery amphora of tapering ovoid body, a slender waisted neck and a pair of curved double-strap handles applied with bosses and terminating in confronting dragon heads that grasp the cup-shaped mouth, all splash-glazed in green and amber from the mouth to just below the high-rounded shoulder ending in an irregular line on the fine-grained pinkish-buff body, raised on a flat foot with beveled edge, height 33cm.

\$100-\$200



218
粉彩神仙故事觀音尊 乾隆年制款

A famille rose porcelain vase, of baluster body with tall neck and flared rim, the exterior painted with lady figures boating, the base marked with six-character seal mark in red, height 45cm, diameter 15.5cm

\$200-\$300



219
綠釉刻花紋罐 成化年制款

A porcelain vase, of baluster form, set with three morning glories moulded on the exterior in creamy-white, overall covered in dark green glaze, the base incised with four-character mark Cheng Hua Nian Zhi, height 24cm, diameter 16cm

\$200-\$300



220
珊瑚紅釉人物瓶 乾隆年制款

A porcelain vase, of elongated baluster form with flaring mouth, the exterior painted with a scholar holding bamboo leaves and a child, overall covered in coral red glaze, four-character mark Qianlong on the turquoise base in blue, height 34.5cm, diameter 10cm

\$200-\$300



221
三彩獸耳罐

A pottery jar, of ovoid body tapering to short footing, set with three moulded green beast masks on rim, overall painted with amber from the mouth to just below the shoulder ending in an irregular line on the fine-grained buff body, height 17cm, diameter 16cm

\$200-\$300

TERMS & CONDITIONS

STUNNING ARTS GALLERY AND AUCTION INC AS AGENT

The lots listed in this catalog will be offered by Stunning Arts Gallery and Auction Inc as owner or as agent for consignor(s) subject to the following terms and conditions. By bidding at auction you agree to be bound by these Conditions of Sale.

BEFORE THE AUCTION

Prospective buyers are strongly advised to personally examine any property in which they are interested before the auction takes place. All lots are sold "AS IS" and without recourse and neither Stunning Arts Gallery and Auction Inc nor its consignor(s) makes any warranties or representations, express or implied with respect to such lots. No statement, whether written or oral, and whether made in catalog, or in supplements to the catalog, an advertisement, a bill of sale, a saleroom posting or announcement, the remarks of an auctioneer, or otherwise, shall be deemed to create any warranty, representation or assumption of liability. It is the responsibility of prospective purchasers to inspect or have inspected each lot upon which they wish to bid, relying upon their own advisers, and to bid accordingly.

BIDDING IN THE SALE

Refusal of Admission Stunning Arts Gallery and Auction Inc has the right, at our complete discretion, to refuse admission to the premises or participation in any auction and to reject any bid.

Registration before Bidding

A prospective buyer must complete and sign a registration form and provide identification before bidding. We require bank or other financial references.

Bidding as Principal

To bid in person, the bidder will need to register for and collect a numbered paddle before the auction begins. Proof of identity will be required. Should you be the successful buyer of a lot, please ensure that your paddle can be seen by the auctioneer and that it is your number that is called out. All lots sold will be invoiced to the name and address in which the paddle has been registered and cannot be transferred to other names and addresses. When making a bid, a bidder is accepting personal liability to pay the purchase price, including the buyer's premium, all applicable taxes and all other applicable charges.

Absentee Bids

If the bidder cannot attend the auction, we will be happy to execute written bids on your behalf. Absentee bids in writing must be submitted to Stunning Arts Gallery and Auction Inc at least 24 hours prior to the sale by letter or fax. In the event of identical bids, the earliest received will take precedence.

Reserves

Each lot may be subject to an unpublished reserve which may be changed at any time by agreement between the auctioneer and the consignor.

Auctioneer's Discretion

The auctioneer has the right at his or her absolute and sole discretion to refuse any bid, to advance the bidding in such a manner as he or she may decide, to withdraw any lot, and in the case of error or dispute, and whether during or after the sale, to determine the successful bidder, to continue the bidding, to cancel the sale or to re-offer and resell the item in dispute. If any dispute arises after the sale, our sale record is conclusive.

Successful Bid

The highest bidder acknowledged by the auctioneer will be the purchaser. In the case of a tie bid, the winning bidder will be determined by the auctioneer at his or her sole discretion. In the event of a dispute between bidders, the auctioneer has final discretion to determine the successful bidder or to re-offer the lot in dispute.

AFTER THE SALE

Buyer's Premium

In addition to the hammer price, the buyer agrees to pay Stunning

Arts Gallery and Auction Inc a buyer's premium and the applicable sales tax added to the final total. Each lot sold is subject to a premium of 20% of the successful bid price of each lot up to and including \$50,000 and 18% on any amount in excess of \$50,000 as part of the purchase price. Online bidding is subject to a 23% buyers premium.

Deposit

The contact information provided by the purchase must be accurate and true. The auctioneer reserves the right to request a deposit to be provided before bidding and will be used against any and all purchases made at the auction.

Taxes

Unless exempted by law, the buyer is required to pay HST on the total purchase price including buyer's premium. For international buyers, taxes are not applicable when purchases are shipped out of country. Items shipped out of Ontario, the buyer is required to pay taxes as per the tax status of that province, whether is HST or GST.

Payment

Immediately after the purchase of a lot, the buyer shall pay or undertake to the satisfaction of the auctioneer with respect to payment of the whole or any part of the purchase price requested by the auctioneer, failing which the auctioneer in his sole discretion may cancel the sale, with or without re-offering the item for sale.

The buyer shall pay for all lots within 7 business days from the date of the sale, after which a late charge of 2% per month on the total invoice may be incurred or the auctioneer, in his sole discretion, may cancel the sale. The buyer shall not become the owner of the lot until paid for in full. Items must be removed within 10 days from the date of sale, after which storage charges may be incurred.

Each lot purchased, unless the sale is cancelled as above, shall be held by the auctioneer at his premises or at a public warehouse at the sole risk of the buyer until fully paid for and take away.

Payment for purchases must be by cash, INTERAC direct debit (Canadian clients in person only), certified cheque (U.S. and Overseas not applicable), bank draft, electronic transfer (fee applies), and VISA or MASTER or AMERICAN EXPRESS card.

Should the item not be paid for within the time limit stated, the auctioneer, without limitation of the rights of the consignor and the auctioneer against the buyer, may resell any of the articles affected.

SHIPPING

Shipping is provided at the buyers' expense. Stunning Arts Gallery will provide a list of shippers. The purchased items will be released with the buyers' written consent and until payment has been made in full. Shipping, packing and handling is at the entire risk of the buyer. SAG will have no liability of any loss or damage to such items.



Stunning Arts Gallery & Auction

20 Steelcase Road W., #1A

Markham, ON L3R 1B2

Phone/Fax: 905-604-8288

Email: stunningartsgallery@gmail.com

ABSENTEE/TELEPHONE BIDDING COMMISSIONS FORM 电话委托竞拍表格

Name: 名字:			Telephone Bid <input type="checkbox"/>	Absentee Bid <input type="checkbox"/>
Phone: 联系电话:	Email: 电子邮件:			
Address: 地址:				
City: 城市:	Province: 省:	Postal Code: 邮编:		
Credit Card Number : 信用卡号码 :		Expiry Date : 到期日期 :		
Name on Card: 持卡人姓名 :		CVV: 卡后三位安全码:		
Billing Address (if different): 账单邮寄地址:				

LOT NUMBER	DESCRIPTION	MAXIMUM BID

All absentee bids will be accepted until 5 hours before the beginning of the auction. Phone lines are limited and telephone bids are taken on a first come, first serve basis for each lot. If all the phone lines are reserved for a lot you requested, you will be contacted in order for you to leave an absentee commission bid. While we are pleased to offer telephone bidding as a service to our clients, and take great care in their commission, we will not be held responsible for any errors or omissions. All sales are subjected to a 20% buyer's premium added to the hammer price, 18% on any bids over CAD \$ 50,000. I request Stunning arts gallery & auction to execute these bids on my behalf and I agreed to the auction terms and condition.

Signature 签名	Print Name 正楷签名	Date 日期
-----------------	--------------------	------------

Please send all completed forms to Stunning arts gallery & auction by mail, email or fax provided above.