



001
晚清 青花茶葉罐帶木蓋

A blue and white porcelain tea caddy, of rectangular form, surmounted by a stepped square-sectioned neck with everted rim, painted with figures on the exterior, accompanied with a wood cover, height 14.5 cm

\$100-\$200



002
清末 翡翠把錫壺

A set of three pewter teapots, exterior carved in low relief of landscapes and inscribed characters, the lids and handles inlaid with jades, height 10 cm

\$200-\$300



003
清 青花大花盆

A blue and white porcelain jardiniere, of bulbous form, decorated the exterior with floral scrolls, diameter 24 cm, height 17.6 cm

\$100-\$200



004
粉水晶人物一對

A pair of rose quartz, carved with ladies holding lotus and dressed in elegant robes, stone of pink with brown inclusions, height 17.5 cm with stand

\$100-\$200



005
瑪瑙人物一對

A pair of agate lady figures, depicting two ladies holding lotus, stone of grey tone with white inclusions, height 9.3 cm with stand

\$100-\$200



006
銀像一對

A pair of silver figures, depicting seated Buddha in meditation, height 11.2 cm

\$100-\$200



007



008



009



010

**007
玉雕雙耳鼎**

A pale celadon censer, the body of rectangular section all support on four hollow cabriole legs, the shoulders set with upright handles, the front and back face delicately carved in shallow relief with ataotie, the cover surmounted by a beast finial, accompanied with a wood stand, height 14.5 cm

\$200-\$300

**009
日本茶杯一套八件**

A set of Japanese vessels, two Japanese teapots, height 16.5 cm; six pieces of Japanese plates, diameter 14 cm, together the exterior painted with two roosters resting at bamboo grove, the base mark with red sealmark

\$100-\$200

**008
青花大缸帶底座 20 世紀 大清康熙款**

A large blue and white jardiniere, with deep rounded sides rising to a wide everted rim, with seven dragons writhing amongst flames and scrolling clouds in pursuit of flaming pearls above tumultuous waves, the rim with Da Qing Kangxi seal mark, accompanied with a fitted wood stand, diameter 52 cm

\$1000-\$1,500

**010
清 素三彩四足香薰 (修補)**

A famille-verte censer, the square body rising from four lion mask cabriole legs to a broad everted rim, moulded with lion head on each side, the clouds pierced and domed cover surmounted by a beast mouth openrevealing sharp fangs finial, all brightly enamelled in yellow, green and aubergine enamels, repaired had been done on cover, height 21 cm

\$300-\$600



011

**011
清末 粉彩折枝花卉紋大瓶**

A large famille rose vase, of baluster form rising to a flaring mouth, decorated in polychrome with floral sprays, height 44.5 cm

\$200-\$400



012

**012
廣彩百蝶圖盤 大清同治款 / 五彩
囍字圖碗**

Two porcelain plate and bowl, a polychrome painted of butterflies and the edge rimmed in gilt, the base marked with six-character Da Qing Tongzhi in red, diameter 18.2 cm; a bowl painted with four happiness characters and four peonies on the exterior, the base marked with a red archaic mark, diameter 16.6 cm

\$200-\$400



013

**013
青花印泥盒一對**

Two small rectangular porcelain ink boxes, one with foliate designs in blue underglaze, height 3.1 cm; the other with happiness character on the cover and lotus sprays on the side, height 4.8 cm

\$200-\$300



014

**014
18 世紀 青花茶壺**

A blue and white teapot, of compressed globular body, the exterior painted with two sinuous dragons amidst floral sprays, chipping to lid and spout, height 7 cm

\$300-\$500



015

**015
鼻煙壺一組**

Two snuff bottles, a bottle with coral color hardstone stopper, iron red striping painted on the exterior, figures and horse scene on one side and a mountainous landscape with calligraphy on the reverse, height 6.7 cm; a tortoiseshell snuff bottle with wood stopper, carved in low-relief of floral design, height 7 cm

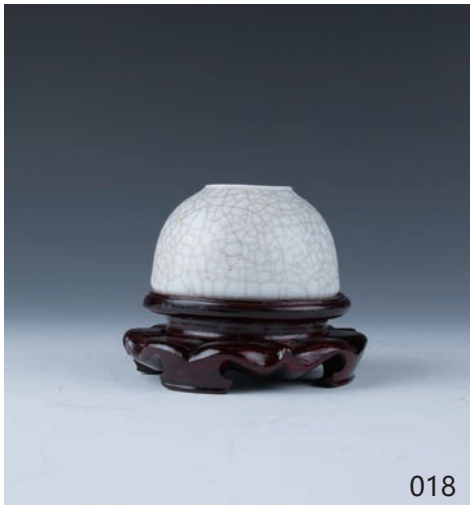
\$100-\$200



016



017



018



019



020

**016
玉石一組**

Three hardstone carvings, a beast like blue agate stone carving, height 4.8 cm; a rectangular hardstone with low-relief bamboo carving, the stone in brown tone, height 8 cm; a foshou fingered citron, of spinachgreen tone with white and grey inclusions, height 7.1 cm

\$100-\$200

**017
建窯小碗一對**

A pair of small bowls, of deep rounded sides rising from a short straight footing to a lipped rim, cover overall in black glaze falling short of the foot to reveal buff body, diameter 11.5 cm

\$300-\$500

**018
哥窯水盂帶座**

A geyao waterpot, of domed body, covered with creamy white glaze suffused with a network of brown colour crackles, accompanied with a wood stand, diameter 8.5 cm

\$200-\$300

**019
清 墨地番蓮紋壽字三層蓋盒 (修補)**

A three tiers porcelain box, of rectangular section, decorated with shou characters and peonies vines on black ground, repaired had been done, height 18.6 cm

\$200-\$300

**020
清 青花撇口碗**

A blue and white bowl, deep rounded sides rising from a short slightly tapered foot to a gently flared rim, painted with floral panels, the base marked with archaic mark, diameter 16.6 cm

\$200-\$300



021
晚清民國 人物故事圖瓷版掛屏

A porcelain plaque, of rectangular section, decorated with five figures holding flower vase in their hands, enclosed by a blue archaistic border, with frame, height 34 cm
\$100-\$200

\$200-\$400



022
青花大花盆連座

A blue and white jardiniere, of the deep rounded sides rising to an everted rim, the exterior painted with key-fret band and ruyi on rim, the base perforated with a circular hole, accompanied with a wood stand, diameter 28.3 cm

\$500-\$800



023
景泰藍小物一組

Three cloisonne enamel vessels, a small vase, decorated with cherry blossoms on black glazed, the base with a sticker Made in People's Republic of China, height 12.5 cm; a cloisonne box with cover, of cylindrical form, enamelled with lotus strapwork reserved on a turquoise ground on both exterior and dome, height 8.3 cm; a recumbent ducks shaped box and cover, height 4.6 cm

\$200-\$300



024
景泰藍一組

Three cloisonne enamel jars, a circular box with cover, Arabic inscription to top in the style of Zhengde, diameter 9.5 cm; an ovoid body jar, enamelled with phoenix amidst clouds, the base marked with Chinese character Fu in red, height 18.5 cm; a jar, decorated with various flowers interlaced with bamboo and foliate scrolls, the base glazed with turquoise, height 22 cm

\$200-\$300



025



026



027



028



028A

**025
清末十三行 人物故事貝雕**

A carved mother-of-pearl shell plaque, carved with scene from Bible (Bethlehem manger scene), height 15.5 cm

\$300-\$500

**026
陶瓷人物像**

A porcelain figure, depicting a man with long beard, holding a bamboo basket in his right hand and a small bench on his back, the base with one artist seal mark, height 26.5 cm, missing piece to hat

\$100-\$300

**027
清 景泰藍鼻煙壺**

A cloisonne enamel snuff bottle, decorated with four horses on exterior, mounted with a beast-mask handles suspending loose rings at the shoulder, height 8.2 cm

\$300-\$500

**028
晚清 酸枝座銅鐘**

A bronze bell, accompanied with a carved figures wood stand, height 48 cm

\$500-\$1,000

**028A
清 絲繡香囊**

A silk knitting embroidery sachet in a ruyi shape, dimension 5 cm x 10 cm.

\$300-\$500



028B



029



030



031

028B
19 世紀 龍紋膽式瓶

A porcelain bottle vase, of elongated pear shape sweeping up to a slender neck, painted in red with sinuous dragon animatedly striding in various positions around the vase amidst clouds ground, the base inscribed with a six-character Qianlong seal mark in underglaze red, accompanied with a wood stand, height 28.5 cm.

\$800-\$1,200

030
清 小水盂帶底座

A porcelain waterpot, of globular form, overall covered in red glaze, unglazed base, height 6 cm, diameter 5.5 cm

\$500-\$800

029
清 五彩人物故事花觚

A large wucai beaker vase, of cylinder form rising from a tall spreading foot to a tall trumpet neck, enamelled around the neck with figures above flowers and fruit, height 40.5 cm

\$1,500-\$2,000

031
清 香鐘帶底座

A bronze incense clock, of ruyi scepter form, the openwork lid pierced with auspicious characters, along with a shallow tier, together with five associated openwork tier, length 29 cm, height 4.5 cm

\$3,000-\$5,000



032
光緒 銀制水烟

A Chinese silver opium pipe, with a long curving stem, hinged lid bowl, body decorated with cloisonné, the stem hanged with silver chatelaine of enameled tools, height 46 cm

\$800-\$1,000



033
清 白瓷貓帶底座

A porcelain carvings, depicting a seated cat with an adornment on neck, overall covered in white glaze, accompanied with a wood stand, height 16.3 cm

\$1,200-\$2,000



034
清中 豆青釉孳齊龍紋瓶

A slip-decorated porcelain vase, of compressed globular body surmounted by a tall cylindrical neck, decorated in carved white slip with two five-clawed dragons writhing amid flames and clouds in pursuit of flaming pearls, reserved on celadon glaze, height 37.7 cm

\$2,000-\$3,000



035
青花釉裏紅人物紋小瓶 大清康熙年制款

A porcelain Ewer, of ovoid body rising from a spreading foot to a tall neck and flaring rim, modelled with a gently curved spout on one side and a strap handle on the other extending from neck to the shoulder, the exterior carved with florals in low relief, applied with an egg-white colour, height 24 cm

\$1,000-\$1,500



036
19 世紀 梅花黃釉瓶

A porcelain vase, of pear shaped form, moulded with plum blossom on yellow ground, height 12.7 cm

\$200-\$300

037
堆瓷棒槌瓶 大清康熙年制款

A porcelain rouleau vase, of cylindrical body rising from a short spreading foot to a ribbed neck with everted waisted rim, decorated with two cusped panels enclosing a senior and a child, all reserved on a spinach greenkey fret band ground, height 21.2 cm

\$800-\$1200



038
清 醬釉小賞瓶

A small porcelain vase, of baluster form, overall covered in brown glaze, unglazed base, height 9.2 cm

\$200-\$300



039
黃釉暗刻紋方盤一對

A porcelain plate, of square section, carved with dragon amidst clouds, covered in ochre yellow glaze, length 10.3 cm

\$500-\$800



039



040
粉彩開光四方筆筒 雍正年制款

A famille rose brush pot, of rectangular form, two large cusped panels enclosing a scene, smaller panels enclosing basket of various flowers, all reserved on an iron-red scrolling foliate and butterflies ground, the turquoise-enameled base centered with an iron-red four-character Yongzheng seal mark, height 17 cm

\$1,000-\$1,500



042
清末 紅地描金小瓶

A porcelain small vase, of pear-shaped form, rising from a slightly splayed foot to a waisted neck and an upturned rim, decorated with gilt drawing of bamboo leaf on coral red glazed ground, height 13.2 cm

\$300-\$400



041
黃地墨彩小對盤 大雅齋款

A pair of porcelain dishes, decorated to the exterior with a bird perched on branches of wisteria and flowers, accompanied by the three characters Dayazhai, followed by a seal reading Tiandi yijia chun (Springtime in Heaven and Earth, One Family), the base with a four-character mark Yongqing changchun (Eternal Prosperity and Enduring Spring), diameter 13.8 cm

\$300-\$400



043
清 白瓷人物像

A porcelain figure of scholar, dress in long robes raised on a platform, overall cover in creamy white suffused with network of brown crackles, height 33.3 cm

\$500-\$800



044



045



046



047



048

**044
清 青花龍紋高瓶**

A blue and white vase, of tapering cylindrical form rising to gently rounded shoulders and a waisted neck, painted with three four-clawed dragons amidst a dense network of scrolling foliage, height 26.2 cm

\$1,000-\$1,500

**045
康熙 青花胡人狩獵圖大盤**

A blue and white plate, painted with warriors riding horses hunting scene, the base mark with an archaistic mark in a blue circle, chipping to the rim, diameter 28.1 cm

\$500-\$1,000

**046
清末 青花水仙盆**

A blue and white jardiniere, of rectangular section supported on four angled feet, rising outwards to a flat rim, each side decorated with four panel of river landscape, all reserved on lotus scrolls, 25.1 cm x 7.6 cm

\$300-\$400

**047
清 青花花鳥玉壺春瓶 雙圈款**

A blue and white vase, of yuhuchun form, painting with bird and flowers, the base with a blue double-circle mark, height 25.5 cm

\$500-\$800

**048
晚清 青花四層蓋盒**

A blue and white four layers cover box, of cylindrical form, painted with flowers, height 12.5 cm, diameter 9.5 cm

\$200-\$300



049



050



051



052



053



054

**049
出口創匯期 黃楊木雕如意**

A boxwood ruyi sceptre carving, carved with flowers on the top and side, a Chinese character shou in the centre, height 61.4 cm

\$300-\$500

**050
湖南醴陵窯 花鳥大盆**

A large porcelain basin, of deep rounded sides rising from a flat base, decorated the interior with bird perching on branch, phoenixes and flowers on the side, diameter 33.4 cm

\$300-\$500

**051
牧童騎牛木雕**

A wood carved figure, depicting a cowboy seated atop a buffalo, height 11.8 cm

\$200-\$300

**052
民國 料器小杯一對 乾隆年製款**

Two white glass cups, one decorated with two sinuous dragons amidst clouds pursuing framing pearl, the base marked with four-character Qianlong seal mark in red, diameter; the other cup painting with children playing, the base marked with four-character Qianlong seal mark in red, diameter 6.4 cm

\$200-\$300

**053
清 銅藏器**

A bronze Tibetan apparatus, of cylindrical form, the exterior carved with lotus and floral scrolls, connected to a chain, diameter 6.1 cm

\$100-\$200

**054
明以前 青銅燈台**

A bronze birds candle holder, supported on three legs, decorated with birds perched on the platform, height 25.5 cm

\$300-\$500



055



056



057



058



059



060

**055
景泰藍香爐**

A cloisonné enamel tripod censor and cover, of compressed globular body rising from three short cabriole legs to a waisted neck, set at the rim with a pair of upright handles, the exterior decorated overall with meandering lotus and floral scrolls, the cover pierced with two heart shape holes, height 11.5 cm

\$300-\$500

**056
竹靈芝筆架 / 清一善堂製瓷筆架**

Two brush rests, a bamboo carved brush rest, carved in a shape of five lingzhi, height 6 cm; a porcelain brush rest, the base marked with Yi Shan Tang Zhi seal mark, a circular hole on the base, height 5 cm

\$300-\$500

**057
曾龍升造款 粉彩佛像**

A famille rose porcelain figure, depicting a seated laughing Buddha dress in long robes revealed ample belly, the base marked with artist Zeng Longsheng seal mark, height 16.5 cm

\$300-\$500

**058
玉珮兩件一組**

Two pieces of jade pendants, one of smaller ruyi form, carved with flower one side and inscription on the other, connected with a star shape chain, height 4.3 cm; the other ruyi-lock-form pendant carved with plum bloom on one side and inscription on the other, 5.7 cm

\$300-\$500

**059
晚清 墨盒**

A bronze ink box with cover, of cylindrical form, the cover carved of inscription, height 2.7 cm

\$200-\$300

**060
晚清 翡翠銀飾一組**

Two silver accessories, a bracelet inlaid with an emerald-green decorated with Chinese character and foliate scroll on the exterior, height 4.1 cm; the other silver accessory inlaid with an emerald-green shou figure, height 3.5 cm

\$400-\$600



061
囍字玉配

A jade pendant, rectangular section, carved with openwork with a shuangxi ('double happiness') character, height 6.5 cm

\$300-\$500



062
晚清 石灣仕女像

A porcelain figure of lady, standing dressed in long robes, with one hand raised holding a flowering peony spray, glazed in clear vivid cerulean blue and plum, height 18.2 cm

\$200-\$300



063
石灣鍾馗 劉澤棉款

One Shiwan pottery figure, depicting Zhong Kui draped in long robes holding a fan in his hand, applied with red, russet and dark brown glaze, the base inscribed with two Liu Zhemian artist seal mark, height 31.5 cm, hand had been repaired

\$300-\$500



064
瓷描金觀音像

A gilt Guanyin figure, depicting a seated Guanyin, dress in long robe, holding a vase in her left hand and beads on her right hand, the base with a circular aperture, height 21.5 cm

\$200-\$400



065
小紫砂茶壺 逸公款

A small zisha teapot, of pear shaped form, modelled with a thin handle and S-shaped spout, the base marked with artist Yi Gong seal mark, height 7 cm

\$200-\$400



066
晚清 雙喜纏枝蓮紋青花盆

A blue and white basin, finely painted with double happiness Chinese character and lotus scrolls, diameter 29 cm, height 10 cm

\$300-\$500



067



068



069



070



071

**067
晚清 青花人物三足爐**

A blue and white tripod censer, the exterior painted with a scene of the emperor's emissary in a garden landscape, the bowl resting on tripod feet, circular area to the base left unglazed, height 16cm, diameter 26cm

\$500-\$800

**068
晚清 青花纏枝蓮花蓋盒**

A blue and white bowl with cover, of circular form, the lobed sides connecting to a circular and four curved dividers, painted with peaches and archaic pattern, the cover decorated with floral and foliate, diameter 20.5 cm, several chips on knob

\$200-\$400

**069
清中 青花人物盤一對**

A pair of blue and white plates, each of the exterior painted with figure, one of the base with Mei Yu seal mark, diameter 20 cm

\$300-\$500

**070
清 宜慶堂花卉詩紋盤**

A porcelain plate, painted with lotus and inscription on the side, the base with a red Chinese knot seal mark, diameter 23.3 cm

\$200-\$400

**071
民國 淺降彩仕女詩文紋瓶**

A porcelain Qian Jiang vase, of baluster form flanked by a pair of gilt handles on the neck, painted with ladies at the courtyard, inscribed and signed by artist, height 57.5 cm

\$200-\$400



072



073



074



075



076

**072
清 出口粉彩花卉紋盤**

A famille rose plate, painted with cluster of flowers on the interior, diameter 23 cm

\$200-\$300

**073
花鳥賞瓶**

A porcelain vase, of lobed form, the exterior painted with floral sprays and sparrow, all reserved on grayish ground, height 30.5 cm

\$500-\$800

**074
清 白釉橢圓形筆洗**

A porcelain brush wash, of oval form, overall covered in white creamy glaze suffused with a matrix of brown crackles, height 6 cm, width 18 cm

\$100-\$200

**075
梅花童子花插 裕民磁廠款**

A porcelain vase, decorated with a boy under a plum blossom tree, the base marked with Yu Min Ci Chang seal mark, height 13.4 cm

\$100-\$200

**076
景泰藍手鍊**

A cloisonné enamel silver bracelet, embellished with red, blue and turquoise into the design, length 19 cm

\$100-\$200



077
清 玉佩挂件

A jade plaque pendant, of rectangular form, carved in low relief to one side with an elder and a child under a pine tree, the reverse with a poetic inscription, height 5.1 cm

\$3,000-\$4,000



078
玉碗一對

A pair of jade bowls, each thinly carved with gently flaring sides, supported on a narrow ring foot, the translucent pale greenish stone, diameter 11.3 cm

\$1,000-\$1,500



079
明 青花人物故事碗 大明嘉靖年制款

A blue and white bowl, Ming dynasty, of inverted bell form with a flared rim, the interior painted with figures and mountain landscape, the exterior painted with continuous landscape, metal mount on the mouth rim, the base marked with a six-character Da Ming Jiajing seal mark in blue, diameter 12 cm

\$5,000-\$8,000



080
清 紅釉橄欖瓶

A porcelain vase, of baluster form rising to a slender cylindrical neck, the exterior applied overall with a rich red glaze draining to a creamy white tone around the mouth, height 44 cm

\$500-\$800



081
清 德化白瓷觀音

A blanc-de-chine figure, depicting seated Gaunyin with her right hand over her knee, with draped hooded robe and blossoming lotus necklace, marked with artist mark in square on the back, height 23 cm

\$500-\$800



082
民國 盆 碗 盤 三件

A Group of porcelain vessels, Republic period, a Qian Jiang basin, painted with peony and bird, the mouth rim inscribed with calligraphy, diameter 26.4 cm; a famille rose bowl, the exterior painted with various flowers, the base marked with a four-character seal mark, diameter 16 cm; and a famille rose plate, painted with butterflies and flowers, the base marked with a four-character seal mark, diameter 17 cm

\$200-\$400



083
清 青花碗三個

Three porcelain bowls, two blue and white bowls, one white glaze porcelain bowl, diameter 18.1 cm

\$200-\$300



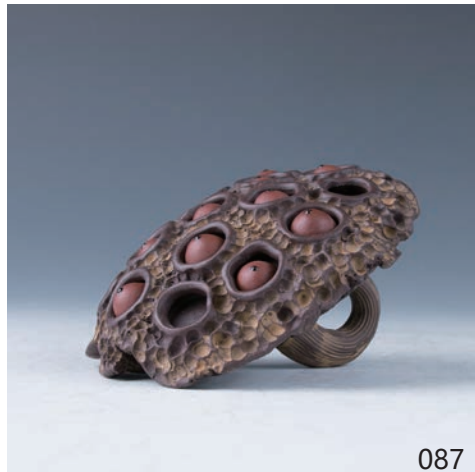
084



085



086



087



088

**084
青花罐蓋 光緒年制款**

A blue and white jar with cover, decorated to the exterior and cover with a central shou (longevity) character roundel surrounded by five bats, the base marked with four-character Guangxu seal mark in blue, diameter 11.5 cm

\$200-\$400

**085
紫砂加彩茶壺**

A zisha teapot, of hexagonal form, the exterior painted with boy and Kirin and river landscape, all reserved on white ground, blue paint on spout, handle and mouth rim, the base inscribed with two artist sealmarks, height 7.2 cm

\$200-\$400

**086
清 青釉水滴帶座**

A porcelain teapot, of globular form, the curved sides carved in the form of a lobed gourd, decorated with mouse and two bunch of grapes to the lid, accompanied with a wood stand, height 6.8 cm without stand

\$200-\$400

**087
紫砂象真蓮蓬**

Enclosing twelve separately potted lotus seeds above tapering sides adorned by a pea pod and a frog hidden on the reverse sides beside bear impressed marks, diameter 10.5 cm

\$100-\$200

**088
黃蠟石帶底座**

A yellow wax stone, of vertical orientation, featuring several small openings, accompanied with fitted wood stand, height 10 cm without stand, weight 284 grams

\$100-\$200



089



090



091



092



093

**089
青瓷小盤**

A celadon dish, of shallow sides with barbed rim, the interior freely carved with flower, covered overall in a soft green glaze, the recessed base unglazed, diameter 14 cm

\$200-\$300

**090
文革時期人物木雕一組**

Three female figures, cultural revolution period, comprised of one female figure with hoe, height 28 cm, a female figure holding her braid, height 31.5 cm, a female figure carrying schoolbag and a pair of shoes in her hand, height 26.5 cm

\$100-\$200

**091
文革時期人物木雕一組**

Three female figures, cultural revolution period, comprised of one standing figure with a hoe beside her, height 25.6 cm, a female figure reading a book, height 8.5 cm, a female figure holding a bowl, height 22.6 cm

\$100-\$200

**092
清 石灣人物像帶座**

A shiwan figure, depicting a seated Lohan, with a bowl on his left hand, accompanied with a wood stand, height 13.5 cm

\$200-\$300

**093
民國 景泰藍套瓶**

A canton vase with cover, of compressed baluster form, delicately enamelled with grain pattern and floral design, all reserved on a bright green ground, height 21.7 cm

\$100-\$200



094



095



096



097



098

**094
釉裏紅異獸擺件一對**

A pair of porcelain mythical beasts, each covered in red and blue glaze, the unglazed base with a circular aperture, height 21 cm

\$500-\$800

**096
三陽啟泰梅瓶**

A mei ping vase, the tapering body rising to curved shoulders surmounted by a narrow waisted neck, covered overall in copper-red glaze with three splashes of green tone, without stand, height 16.2 cm

\$300-\$500

**098
同治紅釉小碗帶底座**

A small porcelain dish, of steep sides rising from a short circular foot ring, overall covered in coral-red glaze and gilt on mouth rim, accompanied with a wood stand, diameter 10 cm

\$200-\$300

**095
清末獅頂銅爐 / 黑石筆架**

A bronze censer, of rectangular form, supported on four beast like foot, the cover set with a dog knob, height 11.5 cm; a black stone brush rest, of crescent shape and molded as three mountain peaks of graduated height, height 5.7 cm

\$200-\$300

**097
金木雕掛件**

A gilt wood panel, carved in low-relief of warriors' battle scene, 41 cm x 12.6 cm x 6 cm

\$200-\$400



099



100



101



102



103

099
窯變烟壺 / 哥窯烟壺

A small kiln glazed snuff bottle, of height 9.5 cm; a geyao bottle, of creamy white suffused with a matrix of brown crackles, height 6.1 cm

\$200-\$300

100
清末 霽紅小天球瓶

A porcelain bottle vase, of globular form rising from a short foot to a cylindrical neck, the exterior applied overall with a rich dark-red glaze draining to a creamy yellow tone around the mouth, without stand, height 20.8 cm

\$200-\$300

101
笑佛

A agate figure, depicted a standing Laughing Buddha, with head faced upward, accompanied with a fitted wood stand, height 15.7 with stand

\$100-\$200

102
景泰藍龍紋大盆 大明款

A large cloisonné enamel brush washer, with low rounded sides incurved at the mouth and supported on a low tapered foot, the interior decorated with a dragon head, the exterior decorated with two dragons pursuing a pearl, the base marked with four-character Da Ming seal mark, diameter 29.5 cm

\$300-\$400

103
清 漆雕圓蓋盒 (有損)

A cinnabar lacquer box and cover, of circular form, carved through layers of cinnabar lacquer in various levels of relief, the circular top carved with a large chun (spring) character and a circular Shou motif within the side carved with lotus and archaic pattern, diameter 16.5 cm

\$300-\$400



104



105



106



107



108

**104
清 紅釉小賞瓶**

A porcelain bottle vase, of pear-shaped body rising to a tall neck flaring at the rim, applied overall with a copper-red glaze, without stand, height 13.5 cm

\$200-\$300

**105
紅料鼻烟壺 / 白玉鼻烟壺**

Two snuff bottles, a ruby-red glass, of globular form, the exterior carved with deer, the reserve carved with senior and crane, height 8.5 cm; a white jade snuff bottle, of rounded rectangular form with a short tubular neck and flat lip, each face carved in low-relief with a lotus, height 8.1cm

\$300-\$500

**106
清 出口粉彩小花觚**

An export gu vase, Qing dynasty, of slender body supported on a splayed foot, surmounted to a flared mouth, the exterior painted with figures in courtyard scene and floral scrolls, height 19 cm

\$200-\$400

**107
民國 描金開光花鳥對瓶帶底座**

A pair of gilt wood vases, each painted with ruyi-head-shaped panels of birds perching on peonies, against a coral-red ground gilt with scrolling flowers, the base inscribed in gilt and red with a four-character Qianlongmarks, accompanied with wood stands, height 30 cm.

\$500-\$700

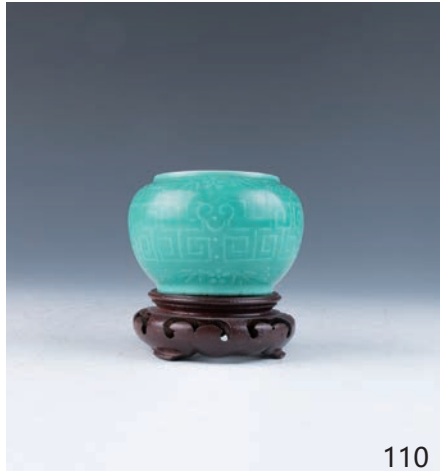
**108
20 世紀 德化白瓷燈籠瓶, 有破損**

A pair of blanc de chine two-section lamps, each thinly molded ovoid shade with three beasts standing on top, the exterior decorated with dragon and phoenix in circular panel, the reserves surrounded by flowersprays, the stands molded with two beasts and bow-tie on mouth rims, height 38.5 cm, minor chips.

\$300-\$400



109



110



111



112



113

**109
萬花彩民國茶杯一對 乾隆年制款**

A pair of tea cups, Republic period, intricately painted with overlapping flowers and leaves in the famille rose palette on the exterior, the knobs and cup bases inscribed with Qianlong seal mark in red, diameter 8.5cm

\$200-\$300

**110
道光款 綠釉暗刻紋水盂帶座**

A porcelain waterpot, of globular form, the exterior decorated with key fret motif and flowers, overall covered in light green glaze, the base inscribed with six-character Da Qing Daoguang seal mark in red, accompanied with a wood stand, diameter 6 cm.

\$300-\$400

**111
景泰藍賞瓶一對**

A pair of cloisonné jars with covers, of baluster body with knobbed lids, the exterior decorated with plum blossoms, against a green ground with ruyi, the base with covered in turquoise tone, height 12 cm.

\$100-\$200

**112
清 石灣賞瓶和紫砂筆筒**

A zisha brushpot, of rectangular section, the exterior carved in low-relief of calligraphy, mountain landscape scene and bamboo on each side, the base inscribed with four-character seal mark and four circular apertures; a shiwan bottle vase, of compressed globular body resting on a stand, overall covered in green glaze, the base with buff body, height 15.5 cm.

\$200-\$300

**113
清 粉彩大花盆**

A large famille rose jardiniere, with flared rim and flat wide border, enamelled with two phoenixes and peonies, the rim decorated with archaistic pattern, height 30.5 cm, diameter 36.5 cm

\$2,000-\$3,000



114
晚清民國 粉彩花鳥瓷板座屏

A quatrelobed shape, painted in bright colours with spring flowers, enclosed within a rectangular carved wood frame, mounted as a table screen in a wooden stand, height of the stand 54 cm

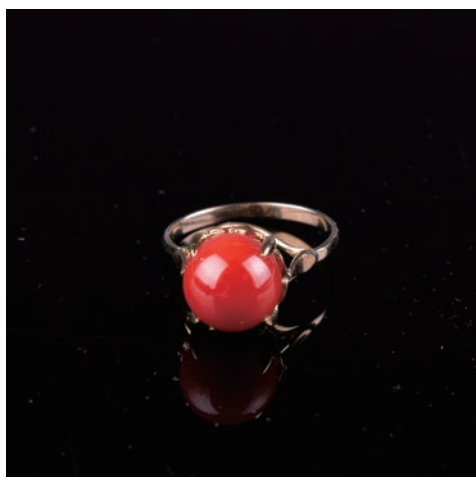
\$500-\$700



115
沙丁紅珊瑚骨董項鍊

One ladies Georgian necklace with attached cross of blood coral, consisting of seventy seven faceted coral beads on the cross with ten larger faceted beads, the beads are ovoid in shape, the cross have been crafted in the 12K gold stamped, the clasp set with a carved rosette of coral, accompanied with certificate issued by Donal Mackay a gemologist/appraiser, bead diameter 8.3 mm, weight 34.7 grams

\$3,000-\$5,000



116
18K AKA 紅珊瑚戒指

A red coral ring, centering on a red round shape coral with 18K gold ring, bead diameter 10 mm

\$1,200-\$1,800



117
天然 MOMO 老圓珠項鍊

A red coral MOMO necklace, comprised of fifty-seven various size beads, largest bead diameter 9.52 mm

\$500-\$800



118
油清翡翠手鐲

A jadeite bangle, of rich spinach green tones, with flecks of pale inclusions, outer diameter 8.5 cm

\$2,000-\$3,000



119
老翡翠手鐲

A jadeite bangle, of a thicker girth, of milky celadon and apple green tones with small russet inclusions, outer diameter 8.3 cm

\$1,000-\$1,500



120
卡地亞紀念版男裝腕錶

A Cartier watch, round Santos watch with water resistant to 30 metres, Cartier's limited series of 150th anniversary edition, engraved on back with serial number 0919/1847, accompanied with signed certificate and original manual, dial diameter 3 cm

\$3,000-\$4,000



121
銅雉鳥

A parcel-gilt figure of pheasant, the feathers alternately gilt, length 36 cm
\$200-\$300



122
黃金領帶鍊

A gold tie chain, surmount of circular form, carved Gold Star on the textured gold, suspended in a 9999 yellow gold link chain, length 11.5cm.



123
玉髓戒指

An agate ring, set with an oval-cut green agate cabochon, diameter 13.89 mm, weight 5.5 grams

\$200-\$300



124
玉髓掛墜

An agate pendant, of oval-cut green agate, diameter 3 cm, weight 8.0 grams

\$300-\$400



125
駱守中 七言小對聯 帶框

Calligraphy couplet, with two seals of the artist, with frames, 34 cm x 6.4 cm

\$500-\$800

126
伍德懿 (1864-1928) 古典人物帶框

Figures, signed Wu Deyi, with two seals of the artist, ink and colour on paper, with frame, 52.5 cm x 34.5

\$500-\$800



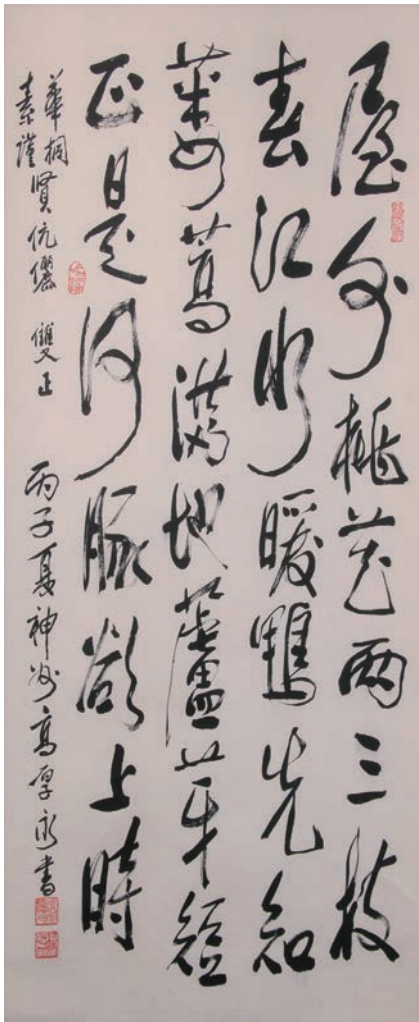


128

128
黄君璧 (1898-1991) 山水 設色紙本 鏡心

Landscape, signed Huang Chun-Pi, with three seals of the artist, ink and colour on paper, 56 cm x 90 cm

\$25,000-\$35,000



127

127
高厚永 書法 水墨紙本 立軸

Calligraphy, dated and signed Gao Houyong, with three artist's seal, hanging scroll, 104.5 cm x 51 cm

\$300-\$500



129
丁衍庸 (1902-1978) 大世界小劇場 設色紙本 鏡心

Figures, signed Ding Yanyong, with one artist's seal, ink and colour on paper, 38 cm x 41 cm

\$2,500-\$3,500



130
陳衍寧 (1945-) 鷹 設色紙本 鏡心

Eagle, signed Chen Yanning, with two artist's seals, ink and colour on paper, 68 cm x 45 cm

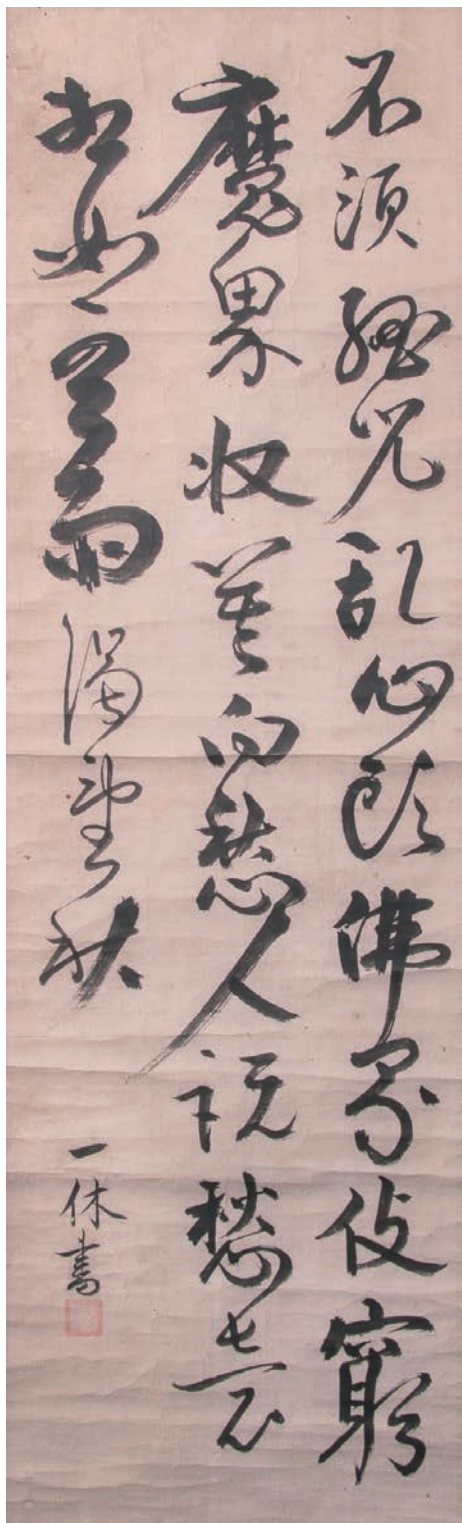
\$500-\$800



131
清 扇面兩幅帶框

Calligraphy, signed Lou Xinqu, with two artist's seals, ink on fan paper, framed, 37 cm x 61cm; Mountain landscape with architecture and figures, calligraphy inscription to top left, with one artist's seal, ink and colour on gold-flecked fan paper, framed, 37 cm x 61cm

\$1,200-\$1,800



132

一休宗純 (1394-1481) 款 書法條幅 立軸

Calligraphy, signed Ikkyu, with one artist's seal, ink on paper, hanging scroll, 33 cm x 107 cm

\$3,000-\$5,000



133

橫山大觀 (1868-1958) 款 正氣放光 水墨絹本 立軸

Landscape, signed Yokoyama Taikan, with one artist seal, ink and colour on silk, hanging scroll, 53.5 cm x 36 cm

\$1,000-\$1,500



133A

日本老鐵壺

An old Japanese iron teapot, of square shape body, height 9 cm.

\$500-\$800



133B
民國 粉彩花鳥帽筒一對

A pair of hat stands painted in famille rose enamel with pheasants and flowers, height 28 cm.

\$500-\$800



133C
19 世紀 黃地粉彩福壽紋高足盤

On the center of the plate, a Shou (longevity) character is surrounded by five bats, the neck and base are on a yellow ground with flowering gourd vines rendered in famille rose enamels, height 23.5 cm.

\$500-\$800



133D
晚清 銅胎海棠式對瓶

A pair of canton enamel vase, the exterior decorated with medallions floral design, painted with green, red, yellow, and blue tone, the base inscribed with a CHINA mark, height 25 cm

\$300-\$500



134
清末 十三行玻璃畫帶框

A reverse-glass export painting of The Thirteen Factories, depicting the harbor scene with figures on boat and flags hanging, flags of Denmark, the United States, and France, with frame 81 cm x 44.5 cm

\$500-\$1,000



135

135
唐卡掛軸

A Thangka, 87.5 cm x 54 cm

\$1,000-\$2,000

136
李方膺 (1695-1755) 款 蘭草 水墨紙本 鏡心

Bluegrass, dated and signed by Li Fangying, with three artist's seals, ink on paper, 24.3 cm x 34 cm

\$300-\$500



136



137

137
唐卡帶托板

A Thangka, 87 cm x 74 cm

\$200-\$400



138

138
清 出口水彩紙本畫

An export Chinese painting, painted of river landscape with a figure standing under a tree, with frame, 26.7 cm x 34 cm

\$100-\$300

THE HANG HWIE PAO FAMILY COLLECTION OF CERAMICS, BRONZE FIGURES, PAINTINGS, AND FURNITURE, LOT 139- 175

多倫多鮑恆發家族珍藏品 拍品編號 139-175



139
明 青銅佛立像

A large bronze figure of an Acolyte, Ming Dynasty, the figure standing on a lotus base with his hands joined in front of the chest in anjalimudra, height 48.5 cm

Provenance: From a very famous Toronto collector Hang Hwie Pao's previous collection.

\$600-4800



140
18 世紀 乾隆 出口粉彩茶壺

An export famille rose teapot and cover, of ovoid body with sprig-moulded flowers and pierced gilt floral panels, above lotus lappets and cash coins, the domed cover surmounted with a floral finial, height 16 cm

Provenance: From a very famous Toronto collector Hang Hwie Pao's previous collection.

\$400-\$600



141
18 世紀 伊萬里茶壺

A porcelain teapot, 18th century, of rounded form decorated in Chinese Imari style with chrysanthemum plants with porcelain cover and circular knob, scroll handle and cylindrical straight spout, a metal interior strainer, minor restoration on the spout and handle, length 18 cm, height 11.5 cm.

Provenance: From a very famous Toronto collector Hang Hwie Pao's previous collection.

\$200-\$400



142
清 樹根座

A root wood stand, featured open work, overlapping branches, carved with a smoothed, flattened surface along the top, width 27.5 cm, height 10.5 cm

Provenance: From a very famous Toronto collector Hang Hwie Pao's previous collection.

\$500-\$800



143



144



145



146



147

**143
18/19 世紀 隨形木擺件**

A root wood scholar's object, 18th/19th century, height 13 cm

Provenance: From a very famous Toronto collector Hang Hwie Pao's previous collection.

\$300-\$400

**144
清 紫砂掛袖賞瓶**

A monochromatic porcelain vase, 19th century, of tall four sides shape with splayed foot, the neck with flared mouth, covered overall in powder blue glaze, yixing ware of the base, height 22 cm

Provenance: From a very famous Toronto collector Hang Hwie Pao's previous collection.

\$400-\$600

**145
康熙 青花蓋罐**

A blue and white ginger jar, of oval body with flatten cover, painted with lotus emblems in between ruyi and lappet borders, the base with a double-ring mark, height 20 cm, diameter 25 cm

Provenance: From a very famous Toronto collector Hang Hwie Pao's previous collection.

\$1,000-\$2,000

**146
宋 白瓷蓋盒**

A porcelain box with cover, of globular form, overall covered in white glaze, the base with H.H.PAO Collection sticker, diameter 7 cm, height 6 cm

Provenance: From a very famous Toronto collector Hang Hwie Pao's previous collection.

\$300-\$500

**147
18 世紀 出口粉彩盤一對**

A pair of export famille rose dishes, 18th century, painted with overglaze coral, peach, with gilt outlines on underglaze cobalt blue, diameter 12.2 cm

Provenance: From a very famous Toronto collector Hang Hwie Pao's previous collection.

\$200-\$300



148
玉猴

A jade figure, depicting a seated monkey with two hands on knees, the stone of a natural white and brown tone, height 9.5 cm

Provenance: From a very famous Toronto collector Hang Hwie Pao's previous collection.

\$400-\$600



149
清 三彩陶瓷蚌

A sancai glazed porcelain erotic group, 19th century, of two figures standing inside a mussel shell above a wave platform, height 15.5 cm

Provenance: From a very famous Toronto collector Hang Hwie Pao's previous collection.

\$400-\$600



150
19 世紀 紅木展示櫃

A hongmu display cabinet, mid 19th century, of rectangular form, divided into open shelves of varying sizes above, with four glasses, two drawers and two doors opening to a large drawer, 214 cm x 112 cm x 37.5 cm.

Provenance: From a very famous Toronto collector Hang Hwie Pao's previous collection.

\$300-\$600

151
19 世紀 紅木展示櫃

A hongmu display cabinet, mid 19th century, of rectangular form, divided into open shelves of varying sizes above, with four glasses, two drawers and two doors opening to a large drawer, 214 cm x 112 cm x 37.5 cm.

Provenance: From a very famous Toronto collector Hang Hwie Pao's previous collection.

\$300-\$600



152



152
文伯仁 (1502 - 1575) 款 五幅山水畫 設色紙本 斗方

Five landscape paintings, signed by Wen Bo Ren, all together with eight artist's seals, ink and colour on paper, 29.6 cm x 28.5 cm

Provenance: From a very famous Toronto collector Hang Hwie Pao's previous collection.

\$400-\$600

153



153
清 潘錦 人物 設色絹本 圓光

Scholar, attendant and crane, signed by Pan Jin, with one artist's seal, ink and colour on silk, diameter 21.7 cm

Provenance: From a very famous Toronto collector Hang Hwie Pao's previous collection.

\$300-\$400



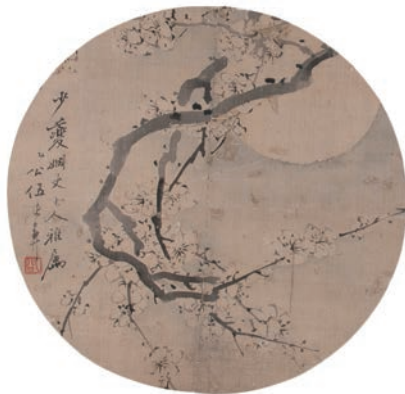
154

154
晚清 王素 (1794-1877) / 李世俊 圓光

Flowers, signed Wang Su, with one artist's seal, colour on gold fan paper, diameter 28 cm; Calligraphy, signed Li Shijun, with two artist's seals, ink on silk, diameter 26.7 cm

Provenance: From a very famous Toronto collector Hang Hwie Pao's previous collection.

\$400-\$600



155

155
晚清 伍德彝 (1864 - 1927) 梅花
設色絹本 圓光

Moon and blossoms, signed Wu Dengyi, with one artist's seal, ink on silk, diameter 23.8 cm

Provenance: From a very famous Toronto collector Hang Hwie Pao's previous collection.

\$300-\$400



156

156
晚清 張小蓬 (1812-?) 花卉 圓光
設色絹本

Floral Branch, signed by Zhang Xiaopeng, with two artist's seals, ink and colour on silk, diameter 24.8 cm

Provenance: From a very famous Toronto collector Hang Hwie Pao's previous collection.

\$300-\$400



157

157
晚清 吳雲 (1811- 1883) 書法 圓光
水墨絹本

Calligraphy, signed by Wu Yun, with three artist's seal, ink on silk, diameter 24.8 cm

Provenance: From a very famous Toronto collector Hang Hwie Pao's previous collection.

\$300-\$400



158

158
晚清 蔭泉 花鳥 設色絹本 圓光

Bird perching on a branch, signed Yin Quan, with two seals of the artist, ink and colour on gold fan paper, diameter 23.8 cm

Provenance: From a very famous Toronto collector Hang Hwie Pao's previous collection. Provenance: From a very famous Toronto collector Hang Hwie Pao's previous collection.

\$200-\$300



159

159
晚清 張二谷 山水 設色絹本 圓光

Landscape and scholar rock, signed by Zhang Er Gu, with two artist's seals, ink and colour on gold fan paper, diameter 23.7 cm

Provenance: From a very famous Toronto collector Hang Hwie Pao's previous collection.

\$300-\$400



160

160
晚清 汪昉 (1799-1877) 山水 水墨
絹本 圓光

Landscape and scholar rock, signed by Zhang Er Gu, with two artist's seals, ink and colour on gold fan paper, diameter 23.7 cm

Provenance: From a very famous Toronto collector Hang Hwie Pao's previous collection.

\$300-\$400



161
胡璋 (1848-1899) 人物 色設絹本
鏡心

Scholar and tree, signed by Hu Zhang, with one artist's seal, ink and colour on silk, 16.3 cm x 35.6 cm

Provenance: From a very famous Toronto collector Hang Hwie Pao's previous collection.

\$300-\$400

161



162
清蒙而著 山水 設色紙本 鏡心

River landscape, signed Meng Er Zhe, with one artist's seal, ink and colour on paper, 36 cm x 46 cm

Provenance: From a very famous Toronto collector Hang Hwie Pao's previous collection.

\$300-\$500

162



163
周之冕 (1521-?) 款 花鳥 設色紙本 立軸

Ponies and butterflies, signed Zhou Zhimian with two seals of the artist, hanging scroll, ink and colour on paper.

Provenance: From a very famous Toronto collector Hang Hwie Pao's previous collection.

\$800-\$1,200



164
清 榆木八仙桌

An Elmwood table, of square framed top fitted with woven matting over a hard seat above humpback stretchers joined to squared supports and hood feet, 87 cm x 87 cm x 81 cm

Provenance: From a very famous Toronto collector Hang Hwie Pao's previous collection.

\$400-\$600

165
清 茶葉末釉小盤

A porcelain dish, Qing dynasty, of barbed rim, overall covered in tea dust glaze, diameter 15 cm

Provenance: From a very famous Toronto collector Hang Hwie Pao's previous collection. Provenance: From a very famous Toronto collector Hang Hwie Pao's previous collection.

\$500-\$800



166
民國 料器葵型碗一對

A pair of Peking glass bowls, of serpentine shape, crystal tone, one base carved with CHINA, diameter 18 cm

Provenance: From a very famous Toronto collector Hang Hwie Pao's previous collection.

\$200-\$300



167
民國 琥珀色料器八角盤一對

A pair of Peking glass dishes, of shallow of octagonal form rising to a squared flat rim, the glass in translucent amber tone, diameter 17.9 cm

Provenance: From a very famous Toronto collector Hang Hwie Pao's previous collection.

\$200-\$300





168

168
成扇 設色紙本 陳漢第 (1874 - 1949)/ 馮恕
(1867 - 1948)

A folding fan painting of red bamboo, dated and signed by Chen Handi with three artist seals and calligraphy on the reverse, signed by Feng Shu with two artist seals, ink and colour on paper. Provenance: From a very famous Toronto collector Hang Hwie Pao's previous collection.

\$1,000-\$1,500

169



169
吳石仙 (?-1916) 山水 立軸

Landscape, signed Wu Shixian, with one artist's seal, ink and colour on paper, hanging scroll, 56.5 cm x 39 cm. Provenance: From a very famous Toronto collector Hang Hwie Pao's previous collection.

\$1,500-\$2,000



170

170
張之萬 (1811-1897) 山水 立軸

Houses beside mountains, signed Zhang Zhiwan with three seals of the artist, ink on paper, hanging scroll, 69.5 cm x 36.2 cm. Provenance: From a very famous Toronto collector Hang Hwie Pao's previous collection.

\$2,000-\$3,000



171
佚名 山水 設色紙本 立軸

Landscape, unsigned, ink on paper, hanging scroll, 56.5 cm x 39 cm
Provenance: From a very famous Toronto collector Hang Hwie Pao's previous collection.

\$1,000-\$1,500



172
光緒 貝蘊章 書法對聯 八言對

Calligraphy couplet, dated and signed Bei Yunzhang, ink on orange paper, hanging scroll, 157.5 cm x 37 cm
Provenance: From a very famous Toronto collector Hang Hwie Pao's previous collection.

\$1,200-\$1,800



173

173
明代 批灰塗金佛像

A gilt lacquered clay figure, depicting a Buddha in padmasana, hands in dhyana-mudra gesture, minor loss to the bottom, the base with a circular aperture, minor loss to the bottom and hands, height 16 cm. Provenance: From a very famous Toronto collector Hang Hwie Pao's previous collection.

\$1,500-\$2,000

174
19 世紀 尼泊爾觀世音像

A gilt bronze Nepalese Avalokitesvara Buddha height, the right hand is extended downward in the mudra of supreme generosity with the palm facing outward, the left hand holds the stem of a pink lotus flowers blossoming over the shoulder, the base with incised quatrefoil flori-form petal vishvavajra mark, height 18 cm. Provenance: From a very famous Toronto collector Hang Hwie Pao's previous collection.

\$3,000-\$5,000



174

175
18 世紀 無量壽佛像

A gilt bronze Amitayus Buddha, seated on a double lotus throne, hands in the position of Dhyana mudra, holding a vase, height 14.5 cm. Provenance: From a very famous Toronto collector Hang Hwie Pao's previous collection.

\$3,000-\$5,000



175



176

清 白釉八卦紋琮式瓶帶底座

A porcelain vase, of square-sectioned body with six raised horizontal bands within a raised rectangular frame, all supported on a short foot and surmounted by a gently tapered neck, covered overall in white glaze, accompanied with a wood stand, height 36.5 cm

\$5,000-\$8,000



177

清初 玉帶鈎一對帶盒

A pair of jade carved belthooks, one carved with a dragon head terminal facing an undercut chilong on the arched stem, a flat circular button on the underside, the stone of an even celadon color, height 10 cm; the other carved with a dragon head terminal, a pearl on the arched stem, the underside with a flat oval button, height 11.6 cm

\$8,000-\$12,000



178

18 世紀 霽紅釉茶杯組一對

A pair of porcelain bowls and covers, 18th century, potted with deep rounded sides, raised on a short foot, the exterior covered in even red glaze thinning at the mouth, diameter 11.8 cm

\$800-\$1,200



179

18 世紀 霽紅釉小碟四個

A four pieces of small dishes, 18th century, of shallow rounded sides, overall covered in red glaze, diameter 8.8 cm

\$600-\$1,000



180

18 世紀 霽紅釉盤一對

A pair of copper red glazed dish, 18th century, the shallow rounded sides rising from a short foot to a gently flared rim, applied overall with a liver-red glaze draining to white at the rim and stopping at the foot, repaired had been done, diameter 18.7 cm

\$600-\$1,000



181
德化白瓷爐

A Blanc De Chine censer, of compressed circular form, with molded lion masks applied below the rounded rim of the wide mouth with grooved edge, and raised on a wide foot with molded rim, height 8 cm, diameter 14 cm

\$3,000-\$5,000

182
明末清初 青花罐

A blue and white jar, of oval form tapering to the feet, the exterior painted in bright cobalt blue with a continual scene of a mythical beast amid plantain trees and rockwork, unglazed base, without stand height 25 cm

\$4,000-\$6,000



183



183
清末 酸枝套几

A nest of four wood occasional tables, each with a rectangular top with pierced geometric frieze on slim legs joined by foot stretchers, 46.5 cm x 36.5 cm x 71 cm

\$350-\$650



184
民國 硬木炕几

A wood cabinet, of rectangular section, of six drawers and two doors, raised on a rectangular stand, 101.5 cm x 27 cm x 42 cm

\$300-\$500

184

185
晚清 小矮櫃

The rectangular panel top set into a mitred, mortise and tenon frame over a cut-out aprons and supported on four legs, 120 cm x 34.2 cm x 36.5 cm

\$300-\$500



185



186

186
龍紋掛屏

A wood carved panel, of rectangular section, carved in various levels of relief of dragon amidst wave, 42.5 cm x 75.5 cm

\$200-\$300

187
滾腳凳

A wood roll footstool, constructed with a single-board floating panel set within the roll above a narrow set-in waist, the curving aprons and legs trimmed with a reeded edge that continues onto each horse-hoof foot, 27.7 cm x 41.5 cm x 17.5 cm

\$200-\$300



187



188
清 粉彩雕塑人物

A famille rose enameled immortal figure standing tall on a stand with his mythical beast, height 16.5cm.

\$250-\$450



189
清 青花四方筆筒帶底座

A blue and white brushpot of square form, painted with landscape and fans with plum blossoms, orchids, bamboo and chrysanthemums, accompanied with a fitted wood stand with marble inlaid on top, height 18 cm.

\$300-\$500



190
清 青金石手串

A lapis lazuli bracelet consisting of eighteen blue beads, accompanied with a box, each bead approx diameter 10.26mm, weight 72.5g.

\$1,000-\$1,500



191
清 綠色碧璽十八子手串

A bracelet consisting of eighteen green beads, accompanied with a box, each bead approx diameter 11.89mm, weight 92.5g.

\$1,000-\$1,500



192



193



194



195

192
清 黃地粉彩花鳥花插

A rectangle shaped famille rose receptacle reserved on a bright yellow ground with pheasants standing on peony trees, 18 cm x 10.5 cm x 22.5 cm.

\$500-\$800

193
紫檀四方小筆筒

A zitan carved wood brushpot with alternating panels of plants, pine tree, lotus, bamboo and plum blossoms from four seasons, height 9.5 cm.

\$300-\$500

194
粉彩小碗一對 洪憲年製款

A pair of famille rose bowls painted with plum blossoms, orchids, bamboo, and chrysanthemums, four hongxiannianzhi read mark on the base, diameter 14.5 cm.

\$200-\$400

195
清 掐絲琺瑯香薰帶座

A cloisonné enamel censer of ball form, decorated in brightly coloured enamels on a light blue ground with lotus blooms borne on leafy scrolling vines, sitting on a fitted wood stand, height 25 cm, diameter 14.5 cm.

\$800-\$1200



196
明 青花小罐

A small blue and white ovoid jar painted with flowers and double collar areas, height 8 cm, diameter 6.5 cm.

\$300-\$500



197
清 粉彩江西十景八角盤

A famille rose octagonal plate painted in bright colour with four famous scenes from Jiang Xi Ten Scenes, diameter 18.6 cm.

\$300-\$500



198
紫檀三層提盒

A zitan three tiers basket, of rectangular section, comprising a narrow cover and three trays, accompanied by a pair of zitan chopsticks, height 15.5 cm.

\$300-\$500



199
晚清 銅獅子帶座 申藝齋款

A small gilt bronze lion in a prone position on a fitted wood stand, height 5 cm with the stand

\$300-\$500



199A
銅獅和神獸鈕印章

A bronze square lion seal chop and a bronze square mythical beast seal chop, incised four characters and six characters respectively on the base, without stand, height 4.5 cm.

\$300-\$500



199B
清 銀製動物圖紋三足蓋爐

A silver tripod censer with two circular shape sections supported on a three cabriole legs, surfaced by high relief of plant veins, and mythical beasts, height 18 cm.

\$500-\$800



199C
清 青銅花觚帶底座

A bronze vase of gu-form with projecting flanges at the corners and kui dragons set against leiwen diaper panels, stiff leaf patterns rising up the trumpet neck, height 32 cm.

\$500-\$800



200
青花番蓮紋水煙座 大明成化款

A blue and white hookah seat, of cylindrical form enclosing with a bulbous mouth, decorated the exterior with floral design, the base marked with a six-character Da Ming Chenghua seal mark in double-circles, height 22.5 cm

\$5,000-\$7,000



201
清 哥釉堆塑雙龍戲珠觀音瓶

A ge glazed dragon guanyin vase, of slender baluster form, decorated with two dragons pursuit of flaming pearl, overall covered in white creamy glaze suffused with a network of brown coloured crackles, the base inscribed with a brown seal mark, height 30.5 cm, diameter 8.8 cm

\$800-\$1,200



202
民國 粉彩人物玉壺春瓶

A famille rose yuhuchung vase, elegantly potted with a pear-shaped body rising to a trumpet mouth, painted with Chinese ancient fairy tales, height 19.5 cm

\$2,000-\$2,500



203
嘉靖款 霽藍釉銅鑼洗

A blue-glazed brush washer, with low rounded sides, incurved at the mouth, the recessed base with a Jiajing mark, height 3 cm, diameter 8.5 cm

\$1,500-\$2,000



204
青花五子登科小罐 明代兔款 (修補)

A blue and white jar, of globular body, painted with 'wu zi deng ke' theme, wish to achieve great success in the imperial examinations, the base marked with a rabbit seal mark, repaired had been done, height 17cm, diameter 11.5 cm

\$1,500-\$2,000



205
紅珊瑚戒指

A red coral ring, inlaid with an oval shaped red coral bead mounted on 18K gold ring, bead diameter, 5.5 grams

\$1,000-\$1,500



206
紅珊瑚鑲鑽戒指

A red coral ring, with a cabochon-cut red coral bead surrounded with diamond mounted on 18K gold ring, bead diameter, 4.0 grams

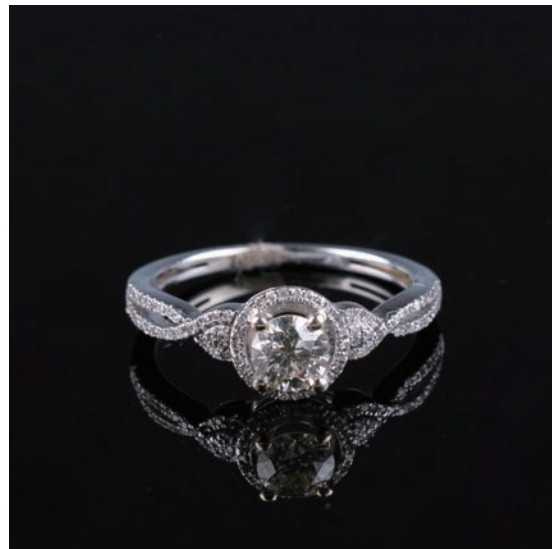
\$1,000-\$1,500



207
豬血紅珊瑚戒指

A pig blood red coral ring, of an oval shaped red coral mounted on 14K gold ring, bead diameter 9.36 mm, 3.0 grams

\$800-\$1,000



208
鑽石戒指帶證書

A stamped 14K white gold diamond ring, set with 0.68ct round brilliant cut natural diamond ring, accompanied with a certificate issued by Dundas Gemological Laboratory, weight 2.50 grams

\$1,000-\$1,200



209
銀嵌紅珊瑚項鍊

A red coral silver necklace, comprised of 25 beads, largest bead diameter 11.79 mm, weight 22 grams

\$1,000-\$1,500



210
紅珊瑚項鍊

A red coral necklace, comprised of 97 beads, bead diameter 5.75 mm, weight 23 grams

\$1,000-\$1,500



211
老蜜蠟素珠項鍊

An old butterscotch amber necklace, comprised of 27 oval shaped beads, the colour of rich caramel tones with an attractive polish, bead diameter 16.88 mm, 40 grams

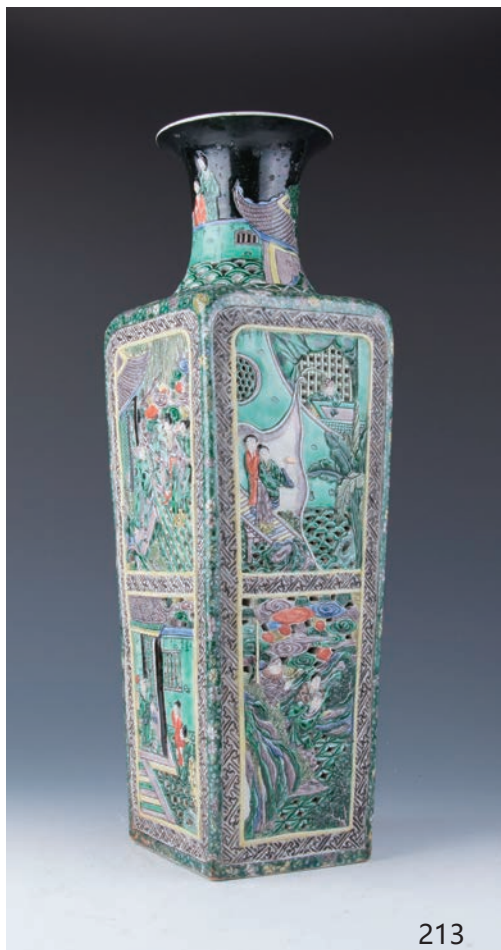
\$1,000-\$1,500



212
老蜜蠟項鍊

An old butterscotch amber necklace, comprised of 18 irregular beads alternated with silver chain, bead diameter 30.72 mm, 98.5 grams

\$1,000-\$1,200



213

213
清 素三彩雕塑人物故事賞瓶

A large famille verte vase, of square-section body with tapered rectangular sides supporting a waisted cylindrical neck and everted rim, carved and pierced on each side with panels depicting scenes from historical allegories, the base with a six-character Kangxi seal mark, height 49 cm

\$3,000-\$5,000



214

214
海水紋水盂

A small waterpot, of cylindrical form, painted with wave and plum blossoms, diameter 5 cm

\$100-\$200



215

215
清 雕漆剔紅人物賞瓶

A cinnabar lacquer vase, of baluster body rising from a short spreading foot to a tall flaring neck with everted straight rim, deeply carved around the exterior with figures in continuous landscape scene, height 27 cm

\$500-\$800



216

216
金木掛屏一對

A pair of gilt wood panels, depicting battle scene with warriors on horseback, and fortress, with frames, 45.2 cm x 27 cm

\$200-\$400



217



218



219



220



221

**217
黃地龍紋小杯一對 大明成化年款**

A pair of porcelain cups, each potted with deep rounded sides rising to a gently flaring rim, carved in low-relief of two dragons striding between clouds, and reserved on yellow ground, the base marked with six-character Da Ming Cheng Hua blue seal mark, diameter 6.4 cm

\$500-\$800

**218
清 玉帶鈎两件**

Two jade belt hooks, one with polished white stone with a ferocious dragon head hook and smooth curving shaft, length 12.8 cm; a smaller belt hook with a beast mask on top, the underside with a flat oval button, length 4 cm

\$500-\$800

**219
民國 瑪瑙銅首飾盒**

A bronze box, of rectangular form, the cover encircling an inlaid agate plaque reticulated floral design in the centre, the exterior decorated with floral scroll design, height 5.5 cm

\$300-\$500

**220
民國 粉彩人物蓋罐**

A famille rose jar with cover, of baluster body with knobbed lid, the exterior painted of lady and emperor in garden scene, the reverse inscribed with calligraphy, the base marked with red seal mark, height 26.5 cm with lid

\$200-\$300

**221
出口創匯期 景泰藍賞瓶一對**

A pair of cloisonné vases, of compressed baluster form, decorated with floral scrolls and reserved on a rich turquoise ground, one base with a sticker stated made in The People's Republic of China, height 26.5 cm

\$500-\$1,000



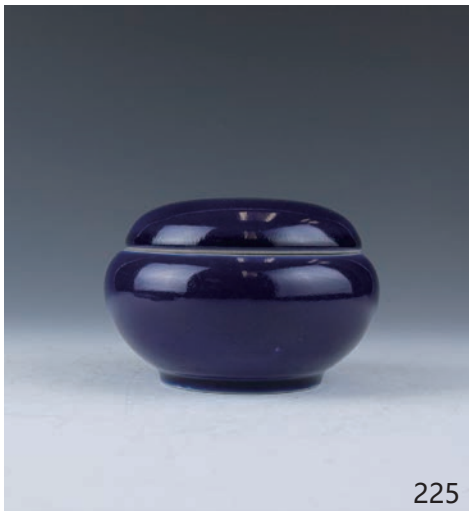
222



223



224



225



226



227

**222
珊瑚人物雕三個**

Three coral carving of figures, carved of a Shou immortal figure, a lady figure and a boy figure, all in pink coral tone, height 4.5 cm

\$300-\$500

**223
清 雕漆剔紅鼻煙壺**

A cinnabar lacquer snuff bottle, of tall ovoid form on a tall upright foot, carved through layers of red lacquer in various levels of relief, one face depicting a lady in courtyard, the other with a lady seated inside a pavilion, the side carved with peony blossoms and leafy scrolls, height 6.8 cm

\$200-\$400

**224
青花花鳥盤**

A blue and white plate, painted with phoenix and blooming flowers, the base marked with a Chinese character Meiyu in a double-square seal mark, diameter 24.4 cm

\$200-\$300

**225
霽藍釉蓋壺 雙圈款**

A porcelain jar with cover, of compressed globular body, overall covered with cobalt-blue glaze, the base marked with a double-circle in blue, diameter 12.5 cm

\$200-\$300

**226
玉雕茶壺 20 世紀**

A jade carved teapot, of lobed body, the cover surmounted by a short stem, the stone in light green tone, height 6.7 cm

\$200-\$300

**227
黃料器刻花圓碗**

A hardstone carved bowl, decorated with bird and flowers on the exterior, overall covered in yellow glaze, accompanied with a wood stand, diameter 15.5 cm

\$300-\$400



228
六角綠釉刻花水盂一對

A porcelain jar, of hexagonal form, the exterior decorated with six panels of floral sprays, the mouth rim with ruyi band, overall covered in green glaze, the base revealed buff body, height 9 cm

\$300-\$400



229
鈎窯小渣斗

A jun ware zhadou, of bulbous body rising from a low foot to a trumpet mouth, applied overall with a rich glaze of milky lavender blue thinning to a mushroom tone at the rim, with subtle splashes of purple tone, diameter 9.2 cm

\$200-\$300



230
綠釉長瓷枕

A porcelain pillow, of rectangular section, two sides carved with coin design, overall covered in green glaze, two sides revealed buff body, height 47.6 cm

\$200-\$300



231
青花圓凳

A blue and white porcelain stool, painted to the exterior in soft tones of cobalt-blue with various detached floral sprays, the top with a circular aperture, height 29.5 cm

\$300-\$400



232
黃釉圓凳

A porcelain garden stool, of barrel form, decorated with coin shaped cut-outs, overall covered in yellow glaze, height 24.5 cm

\$200-\$300



233
銀首飾盒 / 銅砲台

A silver jewelry box, of oval shape, engraved to the exterior with foliate scrolls, height 6.3 cm; a bronze cannon, of typical form with two wheels, height 8.5 cm

\$200-\$300



234
翡翠手鐲

A rounded jadeite bangle, the stone of grayish white tone with spinach green inclusions, inner 5.5 cm, outer 7.8 cm, 64 grams

\$1,500-\$2,000



235
明末清初 青花三足香爐

A blue and white tripod censer, the exterior painted with two figures chatting beside a tree, moulded with three beast like feet, unglazed base, diameter, height 14 cm, diameter 16.5 cm

\$2,500-\$3,500



236
民國 粉彩雙耳尊 / 粉彩小罐

Two famille rose vessels, a double-ears vase, flanked by a pair of elephant head handles, painted with figures and crane on the exterior, height 16.8 cm; a jar with cover, of globular form, the exterior painted with lady figure and calligraphy on reverse, the base marked with six-character seal mark, height 8.8 cm

\$300-\$500



237
清 青花碗一對

A pair of blue and white bowls, decorated with floral sprays in green, diameter 14.7 cm

\$200-\$300



238
青花龍紋大碗 大清康熙年制款

A large blue and white bowl, the interior painted of two sinuous dragons writhing amid flames and clouds, the exterior painted with dragon's tails, the base with a blue six-character Da Qing Kangxi seal mark, diameter 29 cm

\$300-\$400



239
清 紅珊瑚葫蘆瓶一對

A pair of double gourd vases, with a globular lower bulb rising to a waisted neck and a smaller upper bulb tapering to a narrow mouth, covered overall with a red coral glaze draining to a white rim, accompanied with wood stands, height 25 cm, diameter 12 cm

\$3,000-\$5,000



240
清 德化暗刻花觚

A dehua gu vase, the tall cylindrical body rising to a flared rim from a spreading foot, with a raised central band, divided vertically with three flanges, each panel with a small stylized taotio, covered in a milky-white glaze, accompanied with a wood stand, height 39 cm.

\$500-\$1,000



241
清 青花八卦紋瓷硯帶盒

A blue and white ink stone, of circular form, painted with tai chi and eight trigrams, the reverse with unglazed base, diameter 16 cm.

\$500-\$800



242
元 / 明 建窯香爐帶底座

A pottery censer raised atop a flat unglazed foot, the exterior painted with dark black, sitting on a fitted wood stand, diameter 11 cm.

\$300-\$500



243
16/17 世紀 青銅杯帶底座

A bronze cup with a waisted foot supporting a pear shape body, the exterior surfaces cast in horizontal bands of geometric patterns, accompanied with a wood stand, height 13 cm.

\$500-\$1,000

TERMS & CONDITIONS

STUNNING ARTS GALLERY AND AUCTION INC AS AGENT

The lots listed in this catalog will be offered by Stunning Arts Gallery and Auction Inc as owner or as agent for consignor(s) subject to the following terms and conditions. By bidding at auction you agree to be bound by these Conditions of Sale.

BEFORE THE AUCTION

Prospective buyers are strongly advised to personally examine any property in which they are interested before the auction takes place. All lots are sold "AS IS" and without recourse and neither Stunning Arts Gallery and Auction Inc nor its consignor(s) makes any warranties or representations, express or implied with respect to such lots. No statement, whether written or oral, and whether made in catalog, or in supplements to the catalog, an advertisement, a bill of sale, a saleroom posting or announcement, the remarks of an auctioneer, or otherwise, shall be deemed to create any warranty, representation or assumption of liability. It is the responsibility of prospective purchasers to inspect or have inspected each lot upon which they wish to bid, relying upon their own advisers, and to bid accordingly.

BIDDING IN THE SALE

Refusal of Admission Stunning Arts Gallery and Auction Inc has the right, at our complete discretion, to refuse admission to the premises or participation in any auction and to reject any bid.

Registration before Bidding

A prospective buyer must complete and sign a registration form and provide identification before bidding. We require bank or other financial references.

Bidding as Principal

To bid in person, the bidder will need to register for and collect a numbered paddle before the auction begins. Proof of identity will be required. Should you be the successful buyer of a lot, please ensure that your paddle can be seen by the auctioneer and that it is your number that is called out. All lots sold will be invoiced to the name and address in which the paddle has been registered and cannot be transferred to other names and addresses. When making a bid, a bidder is accepting personal liability to pay the purchase price, including the buyer's premium, all applicable taxes and all other applicable charges.

Absentee Bids

If the bidder cannot attend the auction, we will be happy to execute written bids on your behalf. Absentee bids in writing must be submitted to Stunning Arts Gallery and Auction Inc at least 24 hours prior to the sale by letter or fax. In the event of identical bids, the earliest received will take precedence.

Reserves

Each lot may be subject to an unpublished reserve which may be changed at any time by agreement between the auctioneer and the consignor.

Auctioneer's Discretion

The auctioneer has the right at his or her absolute and sole discretion to refuse any bid, to advance the bidding in such a manner as he or she may decide, to withdraw any lot, and in the case of error or dispute, and whether during or after the sale, to determine the successful bidder, to continue the bidding, to cancel the sale or to re-offer and resell the item in dispute. If any dispute arises after the sale, our sale record is conclusive.

Successful Bid

The highest bidder acknowledged by the auctioneer will be the purchaser. In the case of a tie bid, the winning bidder will be determined by the auctioneer at his or her sole discretion. In the event of a dispute between bidders, the auctioneer has final discretion to determine the successful bidder or to re-offer the lot in dispute.

AFTER THE SALE

Buyer's Premium

In addition to the hammer price, the buyer agrees to pay Stunning

Arts Gallery and Auction Inc a buyer's premium and the applicable sales tax added to the final total. Each lot sold is subject to a premium of 20% of the successful bid price of each lot up to and including \$50,000 and 18% on any amount in excess of \$50,000 as part of the purchase price. Online bidding is subject to a 23% buyers premium.

Deposit

The contact information provided by the purchase must be accurate and true. The auctioneer reserves the right to request a deposit to be provided before bidding and will be used against any and all purchases made at the auction.

Taxes

Unless exempted by law, the buyer is required to pay HST on the total purchase price including buyer's premium. For international buyers, taxes are not applicable when purchases are shipped out of country. Items shipped out of Ontario, the buyer is required to pay taxes as per the tax status of that province, whether is HST or GST.

Payment

Immediately after the purchase of a lot, the buyer shall pay or undertake to the satisfaction of the auctioneer with respect to payment of the whole or any part of the purchase price requested by the auctioneer, failing which the auctioneer in his sole discretion may cancel the sale, with or without re-offering the item for sale.

The buyer shall pay for all lots within 7 business days from the date of the sale, after which a late charge of 2% per month on the total invoice may be incurred or the auctioneer, in his sole discretion, may cancel the sale. The buyer shall not become the owner of the lot until paid for in full. Items must be removed within 10 days from the date of sale, after which storage charges may be incurred.

Each lot purchased, unless the sale is cancelled as above, shall be held by the auctioneer at his premises or at a public warehouse at the sole risk of the buyer until fully paid for and take away.

Payment for purchases must be by cash, INTERAC direct debit (Canadian clients in person only), certified cheque (U.S. and Overseas not applicable), bank draft, electronic transfer (fee applies), and VISA or MASTER or AMERICAN EXPRESS card.

Should the item not be paid for within the time limit stated, the auctioneer, without limitation of the rights of the consignor and the auctioneer against the buyer, may resell any of the articles affected.

SHIPPING

Shipping is provided at the buyers' expense. Stunning Arts Gallery will provide a list of shippers. The purchased items will be released with the buyers' written consent and until payment has been made in full. Shipping, packing and handling is at the entire risk of the buyer. SAG will have no liability of any loss or damage to such items.



Stunning Arts Gallery & Auction

20 Steelcase Road W., #1A

Markham, ON L3R 1B2

Phone/Fax: 905-604-8288

Email: stunningartsgallery@gmail.com

ABSENTEE/TELEPHONE BIDDING COMMISSIONS FORM 电话委托竞拍表格

Name: 名字:			Telephone Bid <input type="checkbox"/>	Absentee Bid <input type="checkbox"/>
Phone: 联系电话:	Email: 电子邮件:			
Address: 地址:				
City: 城市:	Province: 省:	Postal Code: 邮编:		
Credit Card Number : 信用卡号码 :		Expiry Date : 到期日期 :		
Name on Card: 持卡人姓名 :		CVV: 卡后三位安全码:		
Billing Address (if different): 账单邮寄地址:				

LOT NUMBER	DESCRIPTION	MAXIMUM BID

All absentee bids will be accepted until 5 hours before the beginning of the auction. Phone lines are limited and telephone bids are taken on a first come, first serve basis for each lot. If all the phone lines are reserved for a lot you requested, you will be contacted in order for you to leave an absentee commission bid. While we are pleased to offer telephone bidding as a service to our clients, and take great care in their commission, we will not be held responsible for any errors or omissions. All sales are subjected to a 20% buyer's premium added to the hammer price, 18% on any bids over CAD \$ 50,000. I request Stunning arts gallery & auction to execute these bids on my behalf and I agreed to the auction terms and condition.

Signature 签名	Print Name 正楷签名	Date 日期
-----------------	--------------------	------------

Please send all completed forms to Stunning arts gallery & auction by mail, email or fax provided above.