



001  
**剔红百宝嵌六屏屏风**  
 SIX-PANEL LACQUER SCREEN

A magnificent inlaid cinnabar lacquer six-panel screen, each panel with semi-precious stones, depicting flowers and birds, all reserved on a carved cinnabar lacquer diaper-ground, the back painted with flowers and birds, bamboo and rocks on the black-lacquered ground. 50.4cm x 5cm x 203.5cm each panel

CA\$5,000 - CA\$8,000



002  
**酸枝木雕挂屏**  
 CARVED SUANZHI WOOD DRAGON PANEL

A wood carved hanging panel, of overall Ruyi form, carved in low and high-relief with Phoenix standing on a scholar's stone, among pine trees, poney and clouds, below carved with two dragons in pursuit of a flaming ball. L: 62cm, W: 109.5cm, Thickness: 4.25cm

CA\$1,000 - CA\$2,000



003  
**漆金木雕**  
 GILT 'OPERA FIGURES' CARVED WOOD PANEL  
 Carved in relief depicting figures dressed in ancient Chinese costume, depicting a scene of figures in ancient Chinese building on lacquered to a red background. 36.5cm x 40cm x 5cm

CA\$300 - CA\$500



004  
**花梨木嵌大理石半圆台一对**  
 PAIR OF DEMI-LUNE HUALI AND MARBLE TABLES

A pair of marble-inlaid demi-lune table, the semicircular top with an openwork carved dragon apron, connected with four slender legs and united by three layers of shelves beneath. H: 81cm D:84.5cm

CA\$500 - CA\$800



005  
**酸枝套几一组三件**  
 SET OF THREE SUANZHI WOOD NEST TABLES

A set of three small tables, each with a rectangular top supported by four legs, the two bigger one with three stretchers, and the smallest one with four. 59.5cm x 30.5cm x 41.5cm

CA\$400 - CA\$700



006  
**硬木嵌大理石方桌带方凳四张**  
 MARBLE-INLAID HARDWOOD TABLE WITH FOUR STOOLS

The set comprising of a marble-inlaid table, with an irregular square top, supported by four slender legs, and four square stools with marbles on the top. 78cm x 78cm x 80cm

CA\$500 - CA\$800



007  
**硬木木柜**  
 HARDWOOD CABINET

A rectangular form wooden cabinet, supported by four square feet, with two drawers and a big section beneath, decorated with a tripartite metal plate and suspending reticulated door pulls. L: 37.9cm, W: 50.3cm, H 81.2cm

CA\$300 - CA\$500



008  
**多宝木格一对**  
 PAIR OF CHINESE HARDWOOD DISPLAY CABINETS

Each rectangular frame enclosing a glass panel and carved at the top with scrolling decoration, the hinged door opening to a wood-backed series of tiered shelves of varying height. Size of each (x2): 9.5cm, 50.3cm, 81cm

CA\$300 - CA\$500



009  
**硬木小案**  
 HARDWOOD ALTAR TABLE

The rectangular panel top set into a mitered, mortise and tenon frame over a cut-out apron and supported on four legs. L: 42.8cm, W: 118.8cm, H: 84cm

CA\$200 - CA\$300



010  
**硬木云石画神仙人物八屏 晚清**  
 MARBLE-INLAID 'FIGURAL' SCREEN, LATE QING

A late Qing Marble-inlaid eight panels screen, each screen comprising of three parts, painted with ancient figures and their stories on one side, and the reverse painted with landscape, some marble panels painted with calligraphy. 18cm x 68.8cm x 1.5cm each.

CA\$1,000 - CA\$1,500



011  
**图录一箱 50 本 (苏富比, 佳士得等)**  
 GROUP 50 AUCTION CATALOGUES

Comprising 50 previous catalogues from auction houses including Sotheby's and Christie's etc., Dated 1980s -1990s.

CA\$300 - CA\$500



012  
**20 世纪 岫玉摆件带木座**  
 CELADON HARDSTONE VASE, 20TH C.

The vase of overall conical form, with four compressed globular bodies, the body carved and pierced with decorations, attached with various ears all over the body, the body of celadon tone, with some light yellow inclusions, accompanied with a fitted wooden stand. H:23cm W:13cm

CA\$100 - CA\$200



013  
**刺绣一组两件**  
 TWO EMBROIDERIES

The set comprising of two beautiful embroideries, one depicting a tiger and the other depicting two phoenix. 89cm x 41cm; 43cm x 73cm

CA\$200 - CA\$300



014  
**居廉 (1828-1902) 猪扇面**  
JU LIAN(1828-1902), PIG

Painted pig, signature and two artist's seals, ink on silver paper.

CA\$800 - CA\$1,200



015  
**苏六朋 (1791—1862) 花卉扇面**  
SU LIU PENG (1791-1862), ROCK AND FLOWER

Painted flower and rock, signature and seal of the artist, ink, and color on paper.

CA\$600 - CA\$1,000



016  
**任预 (1853—1901) 山水扇面**  
REN YU (1853-1901), LANDSCAPE

Painted landscape, dated 1897, signature and one seal of the artist, ink on gold paper.

CA\$800 - CA\$1,200



017  
**高奇峰 (1899-1933) 鼠扇面**  
GAO QI FENG(1899-1933), MOUSE

Depicting mouse, signature and two artist's seal, color and ink on paper.

CA\$600 - CA\$1,000



018  
**陆纲 山水 扇面**  
 LU GANG, SCHOLAR'S ROCK

Depicting scholar's rock, signature and three artist's seals, color and ink on paper.

CA\$500 - CA\$800



019  
**顾洛 (1763—约 1837) 人物 扇面**  
 GU LUO (1763-1837), WASHING CLOTH

Painted figures and landscapes, signature and seal of the artists, ink, and color on silk. 29cm x 28cm.

CA\$500 - CA\$800



020  
**戴以恒 (1826-1891) 山水 扇面**  
 DAI YI HENG (1826-1891), LANDSCAPE

Painted landscape, signature and three artist's seals, ink on paper.

CA\$500 - CA\$800



021  
**金蓉镜 (1856—1930) 山水 扇面**  
 CHIN YUNG-CHING (1856-1930), LANDSCAPE

Depicting landscape and small house, signature, and seal of the artist, ink and color on paper.

CA\$500 - CA\$800



022  
**王瓘 (1847-?) 山水 扇面**  
 WANG HSUN (1847-?), RETREAT IN A BAMBOO GROVE

Painted landscape, signature and seal of the artists, ink, and color on gold-fleaked paper.

CA\$500 - CA\$800



023  
**梅清 (1623-1697) 山水 设色绢本**  
 MEI QING (1623-1697), LANDSCAPE

Depicting landscape and pine trees, signed Mei Qing with two artist's seals, ink and light color on silk. 36cm x 28cm

CA\$600 - CA\$1,000



024  
**赵之琛 (1781-1860) 山水 扇面**  
 CHAO CHIH-CHEN (1781-1860), LANDSCAPE

Depicting landscape, signed Chao Chih-Chen with one artist's seal, ink on paper.

CA\$600 - CA\$1,000



025  
**袁保康 (19 世纪) 山水 扇面**  
 YUAN PAO-KANG (19TH C.), LANDSCAPE

Depicting landscape, signed Yuan Pao-Kang with four artist's seal, ink and light color on gold paper.

CA\$600 - CA\$1,000

026

**张聿光 (1885-1968) 成扇**

ZHANG YU GUANG (1885-1968), FAN

Depicting human figure and animals, signature with one seal of the artist, light color and ink on paper.

CA\$2,000 - CA\$3,000



027

**蔡铣 (1897-1960) 成扇**

CAI XIAN(1897-1960), 'FIGURAL' FAN

Depicting human figures within a garden with scholar's rock and pine trees, signature and one artist's seal, color and ink on paper.

CA\$2,000 - CA\$3,000



028

**冷枚 (1669-1742) 婴戏图 湘妃竹成扇**

LENG MEI(1669-1742) CHILDREN, FAN

Depicting children playing in a garden, signed Leng Mei with two artist's seal, attached to bamboo, color, and ink on a fan. 26.5cm x 46cm

CA\$6,000 - CA\$10,000





029  
**吴佰如 (1948 ~ ) 泼墨荷花 设色纸本 挂轴**  
 WU BAI RU (1945~), SPLASHING LOTUS

Depicting lotus leaf and blossom, titled and signed Wu Bairu, with three artist's seal, ink and color on paper, hanging scroll. Size L:104cm W:60cm

CA\$500 - CA\$700



030  
**傅抱石 (1904 ~ 1965) 款 博弈 设色纸本**  
 AFTER FU BAOSHI (1904~1965), FIGURES PLAYING WEIQI

Depicting figures playing weiqi, signed Fu Baoshi with one artist's seal, color and ink on paper. Size L:32.6cm W:44.8cm

CA\$400 - CA\$600



031  
**方召麐 (1914-2006) 山水 设色纸本**  
 FANG ZHAO LING (1914-2006), LANDSCAPE

Depicting figures among landscape with waterfall, pavilion, mountain, and river, signed Zhou Ling, with two artist's seals, ink and color on paper, framed. Size L: 135.3cm W: 67.9cm

CA\$4,000 - CA\$6,000



032  
**鲁擘周 (19 世纪) 册页三片**  
 LU QING ZHOU (19TH CENTURY), THREE ALBUM PAGES

Comprising of three paintings, depicting human figure within landscapes, signed on each painting Lu Qing Zhou with two to three artist's seals on each painting, color, and ink on paper. Size L: 29.4cm W:46.7cm each

CA\$1,500 - CA\$2,500





033  
**黄胄 (1925-1997) 款 赵朴初 (1907-2000) 成扇**  
 AFTER HUANG ZHOU (1925-1997) & ZHAO PUCHU (1907-2000)

Depicting running horses, signature and one artist's seal, the reverse with calligraphy, signature and seal of the artist, ink on paper.

CA\$2,000 - CA\$3,000



034  
**徐希 (1940 ~ ) 山村瑞雪 设色纸本**  
 XU XI (1940~), SNOW VILLAGE

Depicting village covered in snow, signed Xu Xi with two artist's seals, color and ink on paper. Size L:47.5cm W: 91.7cm

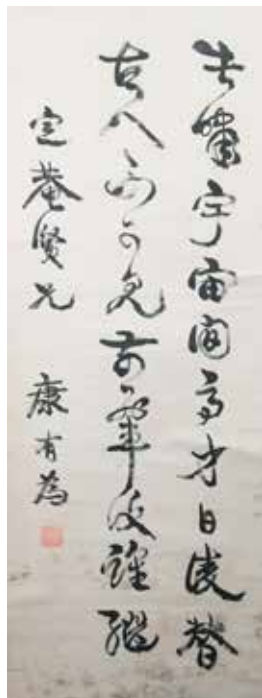
CA\$2,000 - CA\$3,000



035  
**庄树鸿 (1937 ~ ) 动物册页五张 设色纸本**  
 ZHUANG SHU HONG (1937~), FIVE ANIMAL PAGES

Depicting turkey, chicken, bird, and lotus. bamboo and prunus signed and titled by the artists with one to four seals on each painting, color, and ink on paper. 32.2cm x 43cm each

CA\$1,000 - CA\$1,500



036  
**康有为 (1858-1927) 款 书法**  
**水墨纸本 挂轴**  
 AFTER KANG YOU WEI (1858-1927),  
 CALLIGRAPHY

Calligraphy, signed Kang You Wei with one artist's seal, ink on paper, hanging scroll. L:132cm W:50.8cm

CA\$500 - CA\$800



037  
**16/17 世纪 德化白瓷香炉**  
 BLANC-DE-CHINE, DEHUA, CENSER, 16TH/17TH C.

The sensor is of compressed circular form with molded lion masks at the shoulders beneath the everted rim and supported on a flared foot, the glaze is a cream-white tone, collection from James Bisback. H:18cm D:14cm

CA\$3,000 - CA\$5,000



038

**清 硬木鑲玉如意**

HARDWOOD JADE INLAID RUYI SCEPTRE

The scepter is inset with three jade plaques to the terminal, mid-section, and bottom of the shaft, carved with figures in a mountainous landscape, a crane, and the wood is carved with waves motif, provenance: James Biskback. 50cm x 13.5cm x 10cm

CA\$5,000 - CA\$8,000



039

**菱形玉笔洗**

CELADON JADE BRUSH WASHER

Of diamond shape, the body attached with two ring handles, the body attached with a carved prunus blossom, the stone of pale celadon tone with some light yellow inclusion, accompanied with a case. 7.4cm x 13.6cm x 4.8cm

CA\$4,000 - CA\$6,000



040  
**青白玉摆件**  
 CELADON JADE PLAQUE

The pendant of overall rectangular form, the body can be separated, the body decorated with archaistic pattern and inlaid with two green gems, the stone of celadon tone with russet inclusion. 7.5cm x 6.3cm x 2.3cm

CA\$2,000 - CA\$3,000

041  
**青白玉三耳杯**  
 CELADON JADE 'RAMS HEAD' CUP

Of globular body, rising to an outreaching mouth, supported on short cylindrical foot, with three ring ears, incised with a double gourd on water motifs, the stone of creamy white tone with russet inclusion, accompanied with a box. D:6.7cm H:3cm

CA\$2,000 - CA\$3,000



042  
**茶晶刻龙瓶**  
 SMOKY QUARTZ 'DRAGON' BOTTLE VASE

Of globular body, rising to a long straight neck with cylindrical mouth and base, with a wristed cover with a ball on the top, a dragon attached to the neck, body decorated with cloud pattern, the vase made with greyish brown citrine, accompanied with a box. H:16.5cm

CA\$300 - CA\$500





043  
**青白玉玉兰笔洗**  
 CELADON JADE 'MAGNOLIA' BRUSH WASHER

Of an irregular oval form, with Magnolia curved on the exterior and key-fret pattern incised on the edge, on pale celadon tone with russet inclusion, accompanied with a box. 5.8cm x 12.5cm x 3.5cm

CA\$2,500 - CA\$3,500



044  
**晚清掐丝珐琅龙纹盖盒《乾隆年制》款**  
 CLOISSONNE 'DRAGON' BOX WITH COVER, LATE QING

Of a globular body extend to a flat surface on the top, mid-division of the box and cover, decorated with interlace lettuce design cloisonne all over the body, the top decorated with a dragon, accompanied with a box. D:10cm H:6cm

CA\$500 - CA\$800



045  
**白玉印泥盒一对**  
 PAIR OF WHITE JADE SEAL PASTE BOXES

A cosmetic box and cover, the translucent pale celadon jade body of the compressed form, accompanied with a box. D:5.3cm H:2.5cm each

CA\$1,000 - CA\$1,500



046  
**白玉福寿纹扁盒**  
 PALE CELADON JADE ROUND BOX

Of circular sections, the top curved and pierced with bat decoration, the stone of pale celadon tone, with some russet inclusion. D:9cm x H:2.5cm

CA\$900 - CA\$1,300



047  
**白玉寿桃纹玉佩**  
 WHITE JADE PLAQUE

The plaque of overall rectangular form. the body curved with peach and archaic motif, all below pierced cloud pattern, the stone of celadon tone. 3.9cm x 5.9cm x 0.6cm

CA\$3,000 - CA\$5,000



048  
**翡翠挂坠**  
EMERALD JADEITE 'LOTUS' PENDANT

The pendant of overall tapered-rectangular form, the body curved with lotus leaf, the stone of brown and green tone, connected with a golden chain. L:4.7cm

CA\$800 - CA\$1,200



049  
**珊瑚项链**  
CORAL BEAD NECKLACE

A long coral beads necklace. L:144cm

CA\$2,000 - CA\$3,000



050  
**翡翠饰品一组**  
A SET OF THREE EMERALD JADEITE ACCESSORIES

The set comprising of a necklace with a circular pendant, a pair of earrings with a similar design, and a ring with a similar design, the stone of the green tone. Pendant D: 4cm, Earring L:4cm, Ring size D:2.5cm

CA\$3,000 - CA\$5,000



051  
**珊瑚戒指**  
CORAL RING

A ring inlaid with red coral. Ring size D: 2.3cm

CA\$600 - CA\$1,000



052

**18 世纪 铜鎏金千手观音佛像**

A GILT BRONZE AVALOKITESVARA, 19TH C.

Depicting a Buddha with eight hands, and 11 heads, wearing a long robe showing the bare feet, gilded, with two drilled holes on the feet. H:15.7cm

CA\$2,000 - CA\$3,000



053

**晚清 铜鎏金金刚持像**

GILT BRONZE BODHISATTVA, LATE QING

Depicting a seated Vajra figure with hand crossed in front of the chest, and leg crossed, gilded, mark incised on the base. H: 18.3cm

CA\$2,000 - CA\$3,000



054

**铜鎏金白度母像**

GILT BRONZE WHITE TARA

Depicting a seated White Tara, with right hand on the leg and left hand on the chest, gilded, mark incised on the base. H:22.7cm

CA\$2,000 - CA\$3,000



055

**清 打籽锈黄财神唐卡**

THANGKA OF JAMBHALA, QING

Embroidered in colored threads, depicting yellow Jambhala, the figure depicted seated, with each hand holding an attribute. L:87 W:10.5

CA\$4,000 - CA\$6,000



056  
**民国 玉山羊摆件**  
 WHITE JADE GOAT, REPUBLICAN

Depicting a kneeling goat, lively depicting the gesture and the horn, the stone of creamy white tone, with some russet inclusions. 3.8cm x 2cm x 2.5cm

CA\$1,000 - CA\$1,500



057  
**清 白玉携琴访友牌**  
 CARVED JADE FIGURAL PLAQUE, QING

The plaque of overall rectangular form, the body carved in low-relief with a human figure standing below a willow, the reverse carved with calligraphy, the stone of overall creamy white tone. 6.5cm x 4cm

CA\$2,000 - CA\$4,000



058  
**清 白玉人物故事牌**  
 CARVED JADE FIGURAL PLAQUE, QING

The plaque of overall rectangular form, the body incised with a story scene, surrounded by beast motifs, the reverse incised in low-relief with poem, the stone of an even creamy white tone. 4cm x 6cm

CA\$2,000 - CA\$4,000



059  
**清 白玉玉堂锦绣牌**  
 CARVED JADE 'YU TANG JIN XIU' PLAQUE, QING

The plaque of overall oval form, the body carved in low-relief with beast motif, and the reverse carved with 'Yu Tang Jin Xiu' characters, the stone of creamy white tone. 5.5cm x 4.7cm

CA\$1,500 - CA\$2,000



060  
**现代 白玉籽料盒**  
WHITE JADE ROUND BOX

The box of overall globular form, mounted with gold, the interior carved in high and low relief with two Buddha, the stone of an even white tone. D:5.5cm, H:1.5cm

CA\$2,000 - CA\$3,000



061  
**清 白玉双鸳鸯摆件**  
MOTTLED WHITE JADE 'MANDARIN DUCK' CUP

The jade carved with the shape of two mandarin ducks, along with lotus leaves, the stone of pale celadon tone, with russet inclusions. 3cm x 10cm x 5.8cm

CA\$3,000 - CA\$5,000



062  
**清 白玉太平有象杯**  
WHITE JADE RUYI-FORM CUP, QING

The cup of a ruyi form, the supported on elephant-head legs, the tone of overall pale celadon tone, with some light orange inclusions, the body decorated with archaistic pattern. 5.2cm x 7.6cm x 7.3cm

CA\$3,000 - CA\$5,000





063  
**晚清 寿山石雕伏虎罗汉**  
 CARVED SHOU SHAN STONE FIGURE OF PINDOLA

Depicting the tiger-taming luohan, finely carved and portrayed wearing a long robe with incised and inlaid decoration, seated and leaning against his tiger. 5.5cm x 6.5cm x 4.5cm

CA\$500 - CA\$800



064  
**清 白玉麻姑献寿连座**  
 CARVED JADE FIGURE OF MAGU, QING

Depicting the goddess of immortality standing in flowing robes, holding aloft a big vase, standing on a fitted green stand, the stone of creamy- white tone. 2cm x 4.5cm x 0.5cm

CA\$2,000 - CA\$3,000



065  
**清 白玉水盂**  
 WHITE JADE WATER POT, QING

The water pot overall globular form, carved in low and high relief with two ears on the side, the stone of creamy white tone with some russet inclusions on the base. 4cm x 6cm x 0.75cm

CA\$2,000 - CA\$3,000



066  
**清 白玉童子**  
 CARVED JADE BOY, QING

The jade finely carved with a boy wearing a beast mark, along with a small puppy, the stone of overall pale white tone with some russet and brown inclusion at the back. 2.7cm x 2cm x 4.6cm

CA\$1,500 - CA\$2,000



066A  
**玉雕把件**  
 A JADE LINZHI CARVING

Of triangular form, each side carved in low-relief with Linzhi, bat and lotu, the stone of pale white tone. 2.1cm x 2.5cm x 3cm

CA\$1,500 - CA\$2,000



066B  
**童子玉雕把件**  
 A JADE FIGURE CARVING

Carved with a jade figure boy in high and low-relief, the stone of creamy white tone with some light russet inclusions. 4.7cm x 3.3cm x 2cm

CA\$1,500 - CA\$2,000



066C  
**寿星梅花玉雕摆件**  
 A JADE IMMORTAL CARVING

Carved with a jade immortal figure, standing in front of plum blossom, the stone of pale celadon tone. 5.1cm x 7.2cm x 5cm

CA\$2,000 - CA\$3,000



067  
**清白玉佛**  
 WHITE JADE BUDDHA PENDANT, QING

The pendant carved in low relief, depicting a Buddha wearing a long robe, sitting with a gold halo at the back, the stone of pale celadon tone. 0.8cm x 2.5cm x 4.9cm

CA\$1,000 - CA\$1,500

068

**18 世纪 酱釉小碗 《大清乾隆年制》**

**款**

BROWN GLAZED BOWL, QIANLONG  
MARK AND PERIOD

In an iridescent brown glaze on the exterior and interior, the rim and base glazed white, the base with the six-character Qianlong mark and period in underglaze blue, small rim flake restored. D:12.2 cm

CA\$4,000 - CA\$6,000



069

**清光绪 青花宫碗 《大清光绪年制》**

**款**

BLUE & WHITE BOWL, GUANGXU MARK  
AND PERIOD

A blue and white 'palace' bowl painted with a frieze of lotus meander above a petal lappet band on the exterior and with a similar single lotus roundel in the interior, the base with six-character Guangxu seal mark and period. D:17.1cm

CA\$1,000 - CA\$1,500





070  
**清光绪 黄地官窑小盘三件 《大清光绪年制》款**  
 THREE YELLOW GLAZED DISHES, GUANGXU MARK AND PERIOD

A group of three yellow glaze dishes, the exterior body glazed yellow, the interior and the base all glazed white, with blue six-character Guangxu seal and period on the bottom. D:14.1 cm

CA\$1,500 - CA\$2,000



071  
**珊瑚底描金莲花纹盘 《慎德堂制》款**  
 IRON RED LOTUS DISH, 19TH C.

The plate supported on a straight foot, the interior decorated with coral-glaze ground and gilt lotus pattern, the base with four-character Shende Tang seal. D: 12.5 cm

CA\$300 - CA\$400



072  
**清光绪 青花矾红 ‘红蝠齐天’ 盘 《大清光绪年制》款**  
 IRON RED 'FIVE BATS' DISH, GUANGXU MARK AND PERIOD

The interior delicately painted in iron-red with five bats, their wings outstretched and arranged in a circle, the cavetto skillfully painted with twelve bats variously in flight, between unglazed blue borders of double-circles, the reverse similarly decorated with eight bats. The base with six-character Guangxu seal. D: 15.1 cm

CA\$1,000 - CA\$1,500



073  
**清光绪 霁蓝釉碗 《大清光绪年制》款**  
 SACRIFICIAL BLUE BOWL, GUANGXU MARK AND PERIOD  
 The bowl glazed blue on the exterior, white glazed on the interior and base and six-characters Guangxu seal in blue on the base, D:16.6 cm

CA\$1,000 - CA\$1,500



074  
**清嘉庆 粉彩古典人物故事碗 《大清嘉庆年制》款**  
 FAMILLE ROSE 'FIGURAL' BOWL, JIAQING MARK AND PERIOD

The bowl of globular form, the body decorated with ancient figures within an outdoor scene, the base with iron-red six-character Jiaqing seal. D: 13.7 cm

CA\$1,500 - CA\$2,000



075  
**粉彩八吉祥纹碗 《洪宪年制》款**  
 FAMILLE ROSE 'BUDDHIST EMBLEM' BOWL, REPUBLICAN

The bowl finely painted around the exterior with the Buddhist Emblems, tied in ribbons and arranged in pairs below iron-red key-fret scrollwork within blue bands at the slightly everted mouth rim, the short foot ring encircled by bands of ruyi heads and a dotted band on a yellow ground. The base with four-character Hongxian Mark. D:12.1 cm

CA\$600 - CA\$800



076  
**粉彩福寿纹碗 《大清嘉庆年制》款**  
 FAMILLE ROSE 'LONGEVITY BAT & PEACH' BOWL, 19TH C

With slightly everted rim, decorated to the body with four peach trees and stylish auspicious character interspersed with bats, the interior enameled with a bat perched on a leafy peach branch, the base with six-character Jiaqing seal. D:14 cm

CA\$400 - CA\$600



077  
**清宣统 粉彩龙凤纹碗对 《大清宣统年制》款**  
 PAIR OF FAMILLE ROSE BOWLS, XUANTONG MARK & PERIOD

The two plates painted with dragon and phoenix heads to tails amidst flaming clouds in the interior, the base with six-character Xuantong Mark seal and the enamels are later 1920's. D: 22.2 cm each

CA\$2,000 - CA\$4,000



078  
**清光绪 粉彩花卉纹盘一组三个 《大清光绪年制》款**  
 THREE FAMILLE ROSE FLORAL DISHES, GUANG XU PERIOD

The set comprising of three plates, each decorated with floral design on the interior, the base with six-character Guangxu seal. Largest with chip restored; the rest good condition D:24, 18.5, 14.5 cm

CA\$1,500 - CA\$2,500



079  
**粉彩福寿纹盘 《余庆堂制》款**  
 FAMILLE ROSE BATS AND PEACH DISH, GUANGXU PERIOD

The plate decorated with five peaches and two bats in the interior surrounded by a band of floral motif decoration, the base with four-character Yuqing Tang mark. D: 17 cm

CA\$400 - CA\$600



080  
**黄地粉彩万寿无疆碟 《大清光绪年制》款**  
 YELLOW FAMILLE ROSE WANSHOU DISH GUANGXU MARK AND PERIOD

The dish is decorated to the interior with four medallions enclosing the characters Wanshou Wujiang, surrounding a central stylised 'Shou' medallion encircled by waves, all reserved on a yellow ground, the exteriors are glazed white and enameled with three floral sprays, the reverse with three bats and six-character Guangxu mark and period. D: 18 cm

CA\$400 - CA\$600



081  
**19 世纪 五彩人物瓷板画一组四件**  
 SET OF FOUR FAMILLE VERTE PORCELAIN PANELS, 19C.

The set comprising of four famille-verte-rose porcelain panels, depicting figure within an indoor, outdoor, and landscape scene, each panel depicting different images, the unglazed reverse side reveals the buffware, accompanied with a 4-levels fitted box. 26.5cm x 17cm each

CA\$3,000 - CA\$4,000



082

**民国 婴戏茶壶**

FAMILLE ROSE 'BOYS AND BAMBOO' TEAPOT AND COVER

The globular body rising to an everted mouth, with a long spout and a thin handle, the exterior decorated with human figures within an exterior scene, the fitted cover decorated with bamboo, ruyi pattern and interlaced flowers, all surrounding a peach shape knot, the base with an iron red four-character Linzhi Chengxiang Mark seal. W:18cm H:10cm

CA\$2,000 - CA\$3,000



083

**清光绪 青花矾红云蝠纹小碗 对**

TWO MARK AND PERIOD IRON RED BAT BOWLS, GUANGXU

The two bowls of globular form, painted with iron-red bats amongst blue scrolling clouds. D: 12, 12.5 cm

CA\$600 - CA\$800



084

**十九世纪 哥窑开片蒜头瓶 《大清乾隆年制》款**

GE-TYPE VASE, QIANLONG MARK 19TH C.

Of compressed globular body and waisted neck rising to a bulbous head and short upright rim, the body covered with light blue glaze with russet crackles and inclusion, the body with some firing flaws and kiln residue through, the base with six-character Qianlong seal. H:21.5 cm

CA\$4,000 - CA\$6,000



085

**18/19 世纪 汕头福字青花大盘**

BLUE AND WHITE SWATOW 'FU' CHARGER, 18/19TH C.

Covered in a bluish translucent glaze, painted in underglaze blue on the interior with a central calligraphy 'fu' motif with freely painted flowers around the well, between line borders. D: 28.2 cm

CA\$400 - CA\$600



086

**19 世纪 青花水仙花盆**

A BLUE & WHITE NARCISSUS RECTANGULAR PLANTER, 19C.

The rectangular narcissus planter with four bracket feet, with reticulated sides and diaper trellis border interrupted by rosettes, the unglazed feet reveals the buffware. L: 23.5 cm

CA\$300 - CA\$400



087

**19 世纪 鎏金佛教器皿盖豆**

A GILT WOOD RITUAL CONTAINER AND COVE, 19TH C.

A gilt Buddhist vessel, the deep rounded sides rising to a straight rim, supported in a columnar base encircled with a raised band, surmounted by a confirming dome cover, with a knot shape knob. The interior of the cover incised with Qianlong six-character mark. H 26.75 cm

CA\$600 - CA\$800



088

**14/15 世纪 龙泉窑青瓷童子拜观音像 (有修补)**

LONGQUAN CELADON GUANYIN SHRINE, 14TH/15TH C.

The well-potted Buddhist figure sitting in the middle, with unglazed body of brown tone, surrounding by a cave-like design, the interior carved with clouds, exterior with two attendants at the Buddhist figure's left and right, overall cover in celadon glaze, with face of the attendants and the base unglazed, the left bottom corner with signs of repairment. H:24.5cm

CA\$5,000 - CA\$6,000





089  
**明 瓷盘一组两件**  
 TWO CERAMIC DISHES, MING

The group comprising of two ceramic dishes, the Ge Type Dish of conical form rising to petal-like mouth rim, the body covered with celadon glaze and russet crackles; The Ding Type Dish of globular form rising to the everted petal-like mouth rim, the body covered with white glaze with russet crackles. D 14.2, 12.2 cm

CA\$300 - CA\$400



090  
**19 世纪晚期 镶银珊瑚手链**  
 SILVER & CORAL 'DAOIST IMMORTAL' BRACELET, 19TH C.

The bracelet comprising of three coral pieces carved with Daoist immortal figure, connected by silver, the bracelet was slight tarnishing and minor repair to reverse, it is for the Chinese market in South East Asia, accompanied with fitted box. L:18.5 cm

CA\$300 - CA\$400



091  
**19 世纪 镶金白玉 '囍' 字玉佩**  
 18K MOUNTED WHITE JADE 'DOUBLE HAPPINESS' PENDANT 19TH

The jade pendant pierced to the shape of "double happiness", the stone of overall pale celadon tone with russet inclusion, the top mounted with a 18K gold hanger, 19th century . H:5 cm

CA\$600 - CA\$800



092

**19 世纪 镶金白玉 '龙' 纹玉璧**

18K MOUNTED WHITE JADE 'DRAGON' BI DISC, 19TH C.

The pendant of circular form, pierced and carved with a dragon motif, the reverse carved in low relief with a dense pattern of raised bumps neatly arranged in a hexagonal grid pattern. D:6 cm

CA\$2,000 - CA\$4,000



093

**19 世纪 镶金青玉 '龙' 纹玉璧**

18K MOUNTED OLIVE JADE 'DRAGON' BI DISC, 19TH C.

The pendant carved in low relief with two dragon motifs, both facing towards the hole in the middle, the reverse is engraved with raised nodes in shallow relief, the stone of olive tone, with celadon russet. D:6.5 cm

CA\$600 - CA\$800



094  
**晚清 镶金青玉仿古纹手镯**  
 18K MOTTLED CELADON JADE BRACELET, LATE QING

Of an archaistic pattern at the exterior, and the edges mounted with 18K gold, the stone of pale celadon tone with russet lines and inclusions. D:7 cm

CA\$600 - CA\$800



095  
**晚清 白玉仿古纹扳指**  
 A WHITE JADE ARCHER'S THUMB RING, LATE QING

The thumb ring decorated with the archaistic pattern at the exterior, the stone of pale celadon tone with some small russet inclusion. D:2.7 cm

CA\$600 - CA\$800



096  
**19 世纪 白玉配饰一组**  
 GROUP OF WHITE JADE ACCESSORIES, 19TH C.

The group comprising of a bamboo-form bracelet, a bat and lingzhi pendant and a pair of earrings, the bracelet has been restored; the pendant with small drill holeS. Longest L:7.3 cm

CA\$400 - CA\$600



097  
**20 世纪 镶金玉饰品两件**  
 TWO 18K MOTTLED JADEITE ACCESSORIES, 20TH C.

The set comprising of a Peach disc and a mottled bi disc, both mounted with 18K gold, the stone of pale celadon tone with green inclusion; the other stone, of olive tone with green and russet inclusion. Longest L: 6 cm

CA\$300 - CA\$400



098

**19/20 世纪 荷花玉牌带座**

JADE CARVED LOTUS FORM PENDANT AND STAND, 19/20 C.

The pendant carved in lotus form, the body carved with a garden scene, surrounded by a band of ruyi, the reverse with petals, all supported on a fitted wooden stand. H: 7 cm

CA\$500 - CA\$700



099

**20 世纪 三彩骑手像**

TANG-STYLE SANCAI HORSE AND RIDER

The rider with hair tied to a knob, wearing a green coat and red pants, the horse is shown in full gallop with head pulled to the left and mouth open and is glazed in chestnut with a green saddle and touches of white glaze. L: 50cm

CA\$200 - CA\$300



100

**18/19 世纪 矾红 '牡丹纹' 鸟食罐带座**

COPPER RED 'PEONY' BIRDFEEDER, 18TH/19TH C.

The bird feeder of globular form, to a pointed foot, the shoulder connected attached with a small handle, the body painted in iron-red with peony, accompanied with a fitted wooden stand. H 7 cm

CA\$600 - CA\$800



101  
清光绪 黄地龙纹戏珠碗 带座 《大清光绪年制》款  
GREEN AND YELLOW ENAMELED 'DRAGON' BOWL,  
GUANGXU

The bowl glazed yellow on the exterior and interior, the body painted with the green dragon in pursuing a flaming ball above the wave, the interior with a 'shou' character in the middle, Guangxi mark and period, purchased from Hugh Moss, Longon. D:10 cm

CA\$2,000 - CA\$3,000



102  
清 青花人物碟一对 《大明成化年制》款  
TWO BLUE AND WHITE 'FIGURAL' DISHES, KANGXI PERIOD

The dish depicting two human figure within a garden scene in the middle, surrounded by a band of motifs, the exterior decorated with similar motifs and 'Bagua', the base with six-character Chenghua seal. D: 21.5 cm

CA\$1,500 - CA\$2,000



103  
民国 粉彩三足杯杯座 《乾隆年制》款  
FAMILLE ROSE TRIPOD CUP STAND, QIANLONG MARK

The plate decorated with famille-rose in the interior and exterior, the middle with a support designed for tripod cup, the base glazed white with four-character Qianlong seal. D: 16 cm

CA\$2,000 - CA\$3,000



104  
清嘉庆 矾红金鱼纹碗 带座 《大清嘉庆年制》款  
MARK AND PERIOD IRON RED 'GOLDFISH' BOWL, JIAQING

The bowl glaze green in the interior and the base the exterior glazed white and decorated with an iron-red goldfish pattern, the base with six-character Jiaqing seal, accompanied with a fitted wooden stand. D 20.2 cm

CA\$800 - CA\$1,200



105  
**民国 胭脂红地暗刻‘八仙’碗对 带座《光绪年制》款**  
 PAIR OF PINK GROUND 'EIGHT IMMORTALS' BOWL, REPUBLICAN

The bowls glazed pink on the exterior, incised with eight immortal figures, the interior glazed white and the base with four-character Guangxu seal, accompanied with a fitted wooden stand. D:12.5 cm

CA\$300 - CA\$400



106  
**清光绪 青花牡丹花纹碗《大清光绪年制》款**  
 PAIR OF BLUE AND WHITE PEONY BOWLS, GUANGXU

The bowl of globular form supported from a straight foot, the body decorated with peony and branches, the base with six-character seal. D:16.6 cm

CA\$1,500 - CA\$2,000



107  
**民国 粉彩胭脂红地开光龙凤纹碗 带座《大清光绪年制》款**  
 FAMILLE ROSE PINK GROUND BOWL, QING

The bowl of conical form, supported on a straight footing, the interior decorated with green glaze and the exterior with two medallions painted with a dragon and Pheonix playing with flaming ball amidst clouds, all against a pink background, the base with six-character Guangxu seal. D:19 cm

CA\$600 - CA\$800



108  
**蓝釉堆白梅花纹盘一对《大清雍正年制》款**  
 PAIR OF BLUE AND WHITE DISHES, YONGZHENG MARK AND PERIOD

The plate decorated with white prunus and scholar's stone against a blue ground in the interior, the exterior decorated with freely painted flower, the unglazed foot ring revealing the buffware, the base with six-character Yongzheng seal mark and period. D: 20.5 cm

CA\$3,000 - CA\$4,000



109  
**青花人物酒杯**  
 MINIATURE BLUE AND WHITE FIGURAL WINE CUP, 19TH C.

The cup of globular form, painted with human figures and horses on the exterior, the base with four-character Chenghua mark, accompanied with a fitted stand, the cup has been restored. H: 6.3 cm

CA\$150 - CA\$200



110  
**民国 青花花蝶纹碗带盖带座**  
 BLUE AND WHITE 'PEONY AND BUTTERFLY' BOWL & COVER

The lot comprising of a globular form bowl decorated with peony on the body and a fitted cover decorated with a similar design, with a fitted wooden stand, the rim of the bowl and cover mounted with silver. D: 9.5 cm

CA\$100 - CA\$150



111  
**民国 粉彩百花不落地盘《大清嘉庆年制》款**  
 PAIR OF FAMILLE ROSE BLACK MILLEFLEUR DISHES

Each dish decorated to the interior in bright enamels to render a dense pattern of floral sprays including peonies, lotus, hydrangea, chrysanthemum, pinks, narcissus, lingzhi and daisies in rich tones of pink, yellow, blue and green, all against a black ground, the base with six-character Jiaqing seal. D: 21 cm

CA\$600 - CA\$800



112  
**清 青花人物故事盘《大清雍正年制》款**  
 BLUE AND WHITE FIGURAL DISH, YONGZHENG MARK AND PERIOD

The plate painted with figures within a garden scene with trees, pavilion, and scholar's rock, the base with six-character Yongzheng mark and period. D: 21 cm

CA\$1,500 - CA\$2,000



113  
**19 世纪青花‘平户烧’瓶带座**  
 PAIR OF BLUE&WHITE HIRADO-STYLE VASES, 19 C.

A pair of Japanese vases, each vase potted with spreading foot rising to a slender body and to an everted mouth, the body decorated with pine trees, and the base with three-character Pinhu seal. H: 12.5 cm

CA\$800 - CA\$1,200



114  
**19 世纪青花釉里红‘八仙人物’碗**  
 BLUE, WHITE AND PUCE ENAMELED BOWL, 19TH C.

Well-spotted with rounded sides resting on a tapered foot, the exterior painted in underglaze blue with the Eight Immortals carrying their various attributes, riding on various sea creature or plants, journeying across a ground of cresting waves in puce enamel, all above a key-fret band, the interior similarly decorated with a central medallion enclosing Shoulao and a deer amongst puce waves below scrolling clouds, all within blue line borders, accompanied with a fitted wooden stand. D:22cm

CA\$1,500 - CA\$2,000



115  
**清青花仕女纹盘《大清康熙年制》款**  
 LARGE BLUE AND WHITE BASIN, KANGXI MARK AND PERIOD

The basin potted with a flat everted mouth, the interior decorated with various figures including court-ladies within a garden scene, the exterior decorated with floral motifs, and the base with six-character Kangxi mark and period. D:34.5 cm

CA\$1,500 - CA\$2,000



116  
**民国蓝釉龙纹印泥盒《大明成化年制》款**  
 BLUE GLAZED 'DRAGON' SEAL PASTE BOX, EARLY 20TH C.

Of globular section, the box glaze blue on the exterior, incised with dragon surrounded by various clouds, the base with six-character Chenghua seal. D: 9 cm

CA\$200 - CA\$300





117  
**19 世纪 窑变釉太白尊 《宣德年制》款**  
 FLAMBÉ GLAZED BEEHIVE FORM WATERPOT, 19TH C.

With short neck and flaring rim, covered with streaked lavender and purplish-red glaze, the base with a crackled cream glaze, with four-character Xianfeng mark. D: 13.5 cm

CA\$600 - CA\$800



118  
**19 世纪 粉彩花鸟纹碗 《大清道光年制》款**  
 FAMILLE ROSE 'FLORAL AND FAUNA' BOWL, 19TH C.

Of globular body, decorated with flowers including poney, lotus, chrysanthemum, and butterfly, and scholar's rock. the ground with six-character Daoguang seal, accompanied with a fitted wooden stand. D 14cm

CA\$600 - CA\$800



119  
**清 人物小盘带架 《成化年制》款**  
 SMALL BLUE AND WHITE SAUCER DISH, KANGXI PERIOD

A small blue and white plate painted with human figures within a landscape in the interior, the exterior decorated with four motifs, the base with four-character Chenghua seal. D: 10 cm

CA\$100 - CA\$150



120  
**清光绪 粉彩龙纹茶杯三件套 《大清光绪年制》款**  
 FAMILLE ROSE THREE-PIECE TEACUP, GUANGXU

The lot comprising of a teacup, a cover and a fitted cup stand, the body all decorated with the similar dragon and Pheonix playing with flaming ball design, the base of the cup and the top of the knob for the cover with six-character Guangxu mark and period. D: 11 cm

CA\$1,000 - CA\$1,500



121  
**民国 粉彩仙境小盘 《大清光绪年制》款**  
 FAMILLE ROSE "PAGODA AND CRANE" DISH, REPUBLICAN

The plate depicting a heavenly scene with a pagoda and crane above sea and mountain, the base with six-character Guangxu seal. D: 14.2 cm

CA\$400 - CA\$600



122  
**民国 粉彩花纹小碟 《大清光绪年制》款**  
 FAMILLE ROSE FLORAL DISH, REPUBLICAN

The plate decorated with poney and lily, the exterior decorated with the interlaced poney motif, the base with six-character Guangxu seal. D: 14.5 cm

CA\$400 - CA\$600



123  
**清 青花仿古纹香炉**  
 BLUE AND WHITE ARCHAISTIC CENSER, 19TH C.

The censer of compressed globular form with an everted mouth, the body decorated with an archaistic pattern, the unglazed interior and base reveals the buffware, accompanied with a fitted wooden stand. D: 15 cm

CA\$300 - CA\$400



124  
**明 龙泉窑青瓷花瓣瓶 带座**  
 LONGQUAN CELADON FLORAL FORM VASE, MING DYNASTY

The vase of globular form with a petal-like everted mouth, the shape overall mimicking a flower, the body decorated with lightly incised flower pattern, the body covered interior and exterior with celadon glaze, the unglazed foot ring revealing the buffware, accompanied with a fitted wooden stand, purchased from Michael B. Weisbrod, New York. D: 13.5 cm

CA\$800 - CA\$1,200



125  
**清 出口青花人物杯碟 《大清康熙年制》款**  
 EXPORT BLUE AND WHITE CUP AND SAUCER, QING

The cup of bell-shape with an everted mouth, all supported on a straight cylindrical foot, the body painted with figures within an interior scene and separated by flower motifs, the mouth rim covered with a band of waves, the saucer with similar decoration in the interior, the cup's base with six-character Kangxi seal and the saucer's base with four-character Kangxi mark and period. Largest D: 12.1 cm

CA\$300 - CA\$400



126  
**17-18 世纪 德化白釉佛狮香插一对**  
 PAIR OF DEHUA FU LIONS, 17TH/18TH C.

Each modeled with one paw resting on a brocade-patterned ball above rectangular bases, along with a joss stick holder. H: 26.7 cm

CA\$1,500 - CA\$2,000



127  
**19 世纪 三足铜香炉**  
 PAIR OF JAPANESE BRONZE TRIPOD CENSERS, 19TH C.

Each censer of compressed globular form, the middle with a cylindrical container, all supported on three slim feet, accompanied with a fitted cover, the body decorated with leaf motif. D: 14 cm

CA\$400 - CA\$600



128  
**17-18 世纪 白釉双耳瓶**  
 WHITE GLAZED BOTTLE VASE, 17TH/18TH C.

Of compressed globular body, rising to a straight cylindrical neck to an everted mouth, all supported on a straight footing, the neck flanked with two handles, the body covered overall with white glaze, the unglazed foot ring revealing the buffware. H: 25.5

CA\$600 - CA\$800



129

**骨雕件一组**

GROUP OF CARVED BONE OBJECTS

A set of four Asianese bone objects, comprising of an elephant, a Buddha, a human figure, and a tall old figure, some incised with the maker's name. Tallest H:10 cm

CA\$100 - CA\$150



130

**19 世纪 青花八仙人物鼻烟壶 《大清乾隆年制》款**

LARGE AND UNUSUAL BLUE AND WHITE SNUFF BOTTLE, 19C

Of hexagonal form, to a cylindrical neck, the body painted with eight immortals amidst clouds, the base with six-character Qianlong seal. H:12cm

CA\$1,000 - CA\$1,500



131

**19/20 世纪 银器一组与孔雀石熊**

GROUP OF SILVER OBJECTS AND A MALACHITE BEAR, 19TH

The set comprising of six objects, including a malachite bear, and four silver pieces, a swan, a duck and a pair of silver pieces carved with calligraphy, bamboo, and prunus, along with a big egg-shaped container. Tallest H:10 cm

CA\$150 - CA\$200



132

**清 出口青花青瓷蒜头瓶**

BLUE, WHITE, AND CELADON GARLIC HEAD VASE, KANGXI PERIOD

The vase of a pear shape body supported on a spreading foot, tapering to a tall slender neck with a garlic-head mouth and straight mouth rim, the body finely decorated with blue and white decorative pattern and the lower half covered with celadon glaze, the base glazed white. H:21 cm

CA\$2,000 - CA\$3,000



133

**19/20 世纪 粉色料器赏瓶**

PINK PEKING GLASS BOTTLE VASE, 19TH/ 20TH C.

Of baluster body rising from a slightly spreading base, narrowing to waisted neck with an everted mouth, the body covered with the rose-pink tone with swirls of darker and light pink inclusions. H:21 cm

CA\$300 - CA\$400



134

**19 世纪 青花 '岁寒三友' 盘**

A JAPANESE BLUE AND WHITE DISH, 19C.

The plate with the petal-like mouth, decorated with a band of interlaced chrysanthemum surrounding a circular band of bamboo, prunus, and pine trees, the exterior decorated with a similar design and the base with a blue seal. D 18.5 cm

CA\$100 - CA\$150



135

**19 世纪 黄杨木猴子置物 日本**

A JAPANESE BOXWOOD OKIMONO OF A MONKEY 19C.

Depicting a seated monkey, with hands touching the legs, signed Shojiki on the body. W:6cm H:8cm

CA\$400 - CA\$600



136

**19 世纪 青花四方瓶**

BLUE AND WHITE FACETED VASE, 19TH C.

The vase of rectangular-tapered form, on each side decorated with human figures within an interior scene, crane, apple, and bird, prunus and scholar's rock, hydrangea and bird, the base with six-character Kangxi seal. H:21 cm

CA\$400 - CA\$600



137

**20 世纪 青花凤鸟图案碗 日本**

A JAPANESE BLUE AND WHITE BOWL, EARLY 20TH C.

The bowl of globular form, decorated with brocade pattern on the exterior, accompanied with a fitted metal cover incised with maker's mark, with a fitted wooden stand. D 11 cm

CA\$100 - CA\$150



138

**清 暗刻纹釉里红龙纹瓶 大清康熙年制**

A FINE COPPER-RED 'DRAGON' VASE, KANGXI MARK AND PERIOD

The vase is delicately potted with an elongated tapered body, the shoulder rising to a slender neck encircled by three horizontal raised bands, the body decorated with four copper-red dragons, the base with six-character Kangxi mark and of the period. Approx H: 21cm.

CA\$50,000 - CA\$80,000



139

**清 豆青釉青花古典人物双耳大香炉**

LARGE CELADON, BLUE AND WHITE PORCELAIN CENSER

Porcelain pot with a globular body, outcurved mouth trim and all around base trim. Covered in celadon tone glazing and cobalt blue figurative. Two monster ears on the side. Unglazed base revealing the buff. D: 21.5cmH:17cm

CA\$800 - CA\$1,400



140

**珊瑚耳环戒指一组**

GROUP OF CORAL EARRINGS AND RING

The set includes a pair of dangle earring with textural coral bead and coral piece. 14k, L: 5.2cm. An oval shape coral ring, framed in gold elaborate engraving detail. Ring D: 1.8cm-2cm

CA\$800 - CA\$1,100



141

**青白玉鼻烟壶**

CELADON JADE SNUFF BOTTLE

Celadon jade snuffing bottle in flat oval shape rounded shoulder with a hemispherical cover. Decorated with horses carving on the front and back. L: 3cm, W: 6.5cm, H: 8.75cm

CA\$800 - CA\$1,100



142

**玉盖木盒**

WOOD FLORAL ROUNDED CASE WITH JADE COVER

Of cylindrical form with eight lobes makes a scallop-rimmed ruyi shape, the body made with wood, accompanied with a fitted jade cover. L: 6.3cm, W: 7.5cm, H: 8.2cm

CA\$500 - CA\$800



143

**小木几**

WOODEN STAND

A stand with a square top, features elegant horse-shoe legs, four straight legs with an inward rounded foot. Dark red finish. L: 25cm, W:25cm, H:17cm

CA\$200 - CA\$300



144  
**18 世纪 红釉盘**  
RED GLAZED DISH

A copper red glazed dish, 18th century, of shallow rounded sides rising from a short foot to a gently flared rim, applied overall with a liver-red glaze draining to white at the rim and stopping at the foot. Diameter 18.7cm

CA\$400 - CA\$600



145  
**清 硬木文盘**  
CARVED HARDWOOD QUATRELOBED PLATE, QING

With shallow rounded sides supported on a short straight foot, deeply carved through the hardwood with a dragon amidst clouds. 23.7cm x 13.8cm

CA\$500 - CA\$800



146  
**粉彩水盂**  
FAMILLE ROSE WATER POT

The water pot of overall square-tapered form, the body decorated in famille-rose with landscapes and calligraphy with a seal, the unglazed foot ring reveals the buff ware. 8cm x 8cm x 5.5cm

CA\$300 - CA\$500



147  
**绿釉水盂**  
GREEN GLAZE WATER POT

The waterpot of compressed globular form tapered to a flat base, the body potted with lobes and glazed with an olive tone, the unglazed base reveals the buffware. D:9cm, H:6.9cm

CA\$600 - CA\$1,000





148  
**清 青白玉水盂**  
 CELADON JADE WATER POT

The water pot of compressed globular form, the body decorated with an archaistic pattern, the stone of pale celadon tone with some light brown inclusions on the base and over the body. D:4.5cm H:2.3cm

CA\$300 - CA\$500



149  
**哥窑小瓶**  
 GE-TYPE VASE

The vase of tapered form, rising to a long straight neck, the body with bluish-celadon glaze covered with grey crackles, the base glazed brown. H:14.5cm

CA\$500 - CA\$800



150  
**金剛手菩薩唐卡**  
 THANGKA OF VAJRAPANI

Depicting a blueish-green buddha with four hands, standing in the middle amongst flaming clouds, surrounded by other 23 immortal figures. 67.5cm x 46.5cm

CA\$600 - CA\$1,000



151  
**瑜伽行者曼陀罗唐卡**  
 MANDALA OF A YOGI

Depicting an immortal figure with one leg rest on the arm, surrounded by four buddha figures, and encircled by 10 immortal figures, all painted in the gold paint against a black background. 28.7cm x 35.3cm

CA\$600 - CA\$1,000



152  
**民国 多闻天王, 莲花生大士唐卡一对**  
 PAIR OF MINATURE THANGKAS, EARLY 20TH C.

A group of two tangkas, one with Vaisravana, the other with Padmasabava surrounding by a group of immortal figures, with a yellow cover on the top. 14cm x 10.5cm; 14.5cm x 10.5cm

CA\$300 - CA\$400



153  
**粉彩小花盆 《大清乾隆年制》款**  
 FAMILLE-ROSE PLANTER

The flower pot with two medallions finely painted with poney, bird, chrysanthemum against a bright lemon-yellow ground, surmounted by interlaced flower design, the base with six-character Qianlong seal. 14.7cm x 12cm

CA\$200 - CA\$400



154  
**粉彩西洋人物大碗**  
 EXPORT FAMILLE-ROSE FIGURAL PUNCH BOWL

The body of globular form setting on a straight foot, the exterior decorated with painted western figures rising on horses and walking within a landscape scene, the mouth rim decorated with a blue band, an iron redseal on the base marks '1897'. D:36.5cm H:15cm

CA\$500 - CA\$800



155  
**仿古纹铜瓶**  
 BRONZE ARCHAISTIC VASE

The bronze vase of octagonal section, supported on a conforming foot, the neck is flanked by a pair of tubular lug handles, and the vase is covered with archaistic pattern decorations. H:9 3/4 ", D 4 1/2 "

CA\$300 - CA\$500



156  
**寿字盘 《大明成化年制》款**  
 SHOU DESIGN BLUE AND WHITE KANGXI PLATE

The plate decorated with various forms of 'shou' characters rendered in the form of seal script, the base with six-character Chenghua seal, WITH NO STAND. H: 1 1/2", D: 6 3/8"

CA\$1,200 - CA\$1,500



157  
**18世纪 青花麒麟纹瓶 带底座**  
 EXPORT BLUE AND WHITE QILING BOTTLE VASE

The body of globular form rising to a long waisted neck, all supported on a straight foot ring, the body painted with Qiling and floral decorations, accompanied with a fitted wooden stand. H: 9 1/2", D (widest) 4 3/4"

CA\$2,500 - CA\$3,500



158  
**18/19世纪 铜胎掐丝珐琅博古图瑞兽耳活环尊**  
 CLOISSONNE ENAMEL HU-FORM VASE, 18TH/19TH C.

The globular body supported on a spreading foot and set with two gilt-bronze mask handles suspending loose rings, the exterior decorated with the 'Hundred Antiques' against a turquoise ground, gilt bronze stand with four beast-mask cabriole legs H:31.8cm

CA\$6,000 - CA\$9,000



159

**晚清 玉扳指笔插**

JADE ARCHER RING MOUNTED INKWELL

An octagonal metal box attached with three jade thumb ring on the cover, with a hole in the middle of the cover. L: 1 3/4", W: 4 1/2", H: 2 1/2"

CA\$500 - CA\$800



160

**佛珠**

WOOD BEAD PRAYER NECKLACE

Designed as a 118 beads necklace, comprising of hardwood brands and turquoise beads and coral beads. P:128cm

CA\$300 - CA\$500



161

**硬木雕件**

HARDWOOD PINE CARVED BRUSHWASHER

A hardwood bowl, finely carved with a pine tree amongst the bowl. L: 5 1/2", W: 8", H: 1 1/2"

CA\$300 - CA\$500



162

**18世纪 青花花纹大盘**

KANGXI BLUE AND WHITE LOTUS PLATE

The plate decorated with blue and white interlaced flowers in the interior, the exterior with two freely painted flower and branch, the unglazed foot ring revealing the buff ware. WITH NO STAND. H: 1 3/4", D: 133/4"

CA\$1,500 - CA\$2,000



163  
**晚清 六边粉彩花盆 带座**  
 HEXAGONAL FAMILLE ROSE FLOWER POT WITH STAND

Of hexagonal form, rising to an everted mouth, supported on a straight foot, the body painted with landscape and calligraphy, the base with four holes, accompanied with a fitted stand, painted with prunus on the side, with six curved legs. 27.5cm x 27.5cm x 19cm

CA\$800 - CA\$1,200



163A  
**清 松石绿地描金龙纹赏瓶 《大清乾隆年制》款**  
 A TURQUOISE-GROUND GILT IRON-RED 'DRAGON' VASE

The vase of pear shape, rising to a short slender neck, resting on a tapered feet, depicting dragon with iron red and gold lines, all against a turquoise ground, the base with six-character Qianlong seal. H: 35cm

CA\$5,000 - CA\$8,000



164  
**玉盆栽两件**  
 TWO MIXED HARDSTONE BONSAI AND PLANTERS

The set comprising of a jade flower basket and a jade bonsai, with poney, daisy, prunus and green flowers made of hard stones, the leaves also similarly depicted with the hard stone. 24cm x 20cm x 15cm; 26cm x 18cm x 10cm

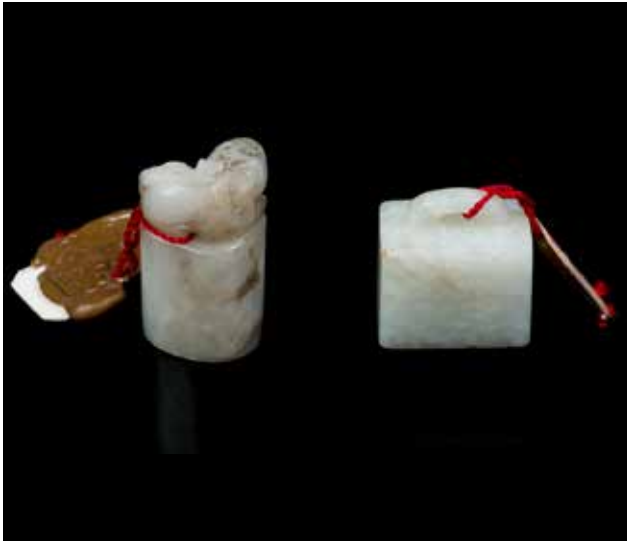
CA\$300 - CA\$500



165  
**80年代 野山参两盒**  
 TWO BOXES OF GINSENG

Two boxes of wild ginseng from Paektu Mountain.

CA\$400 - CA\$600



166  
**玉印章一对**  
 TWO MINITURE JADE SEALS

One of rectangular form with a knob on the top, one of cylindrical form with a carved beast on the top, the stone of creamy tone with brown inclusion, and the other of pale celadon tone. 1.7cm x 1.3cm x 3cm; 2cm x1.1cm x 2.3cm

CA\$300 - CA\$500



167  
**沉香山子**  
 ALOESWOOD SCHOLAR'S ROCK

A piece of aloeswood, form mimicking scholar's rock, the body of light yellow color. H:22.5cm

CA\$1,000 - CA\$1,500



168  
**沉香扳指**  
 ALOESWOOD THUMB RING

Wooden Thumb Ring, with exterior "shou" decoration and interior, mounted with golden metal. D:4cm H:3cm

CA\$600 - CA\$1,000



169  
**18世纪红釉盖碗一对**  
 PAIR OF COPPER RED COVERED BOWLS

Two sets of porcelain bowls with covers, 18th century. Potted with deep rounded sides, raised on a short foot, the exterior covered in even red glaze thinning at the mouth. Diameter 11.8 cm

CA\$1,000 - CA\$1,500



170  
**日本铁壶一组**  
 IRON JAR AND TEAPOT

The jar consists of an ovoid form with a short neck and everted rim. The teapot consists of a globular form, with short tapered mouth and round knot. H:14.8cm ; 20cm

CA\$100 - CA\$200



171  
**福纹瓷盘**  
 GREEN GLAZE CERAMIC PLAQUE  
 Of a surface plate decorated with "Fu" in the center, spot painted with green glaze. D:22cm H:1.5cm

CA\$100 - CA\$200



172  
**印泥盒 《洪宪年制》款**  
 FAMILLE ROSE SEAL PASTE BOX, HONGXIAN MARK

Of circular section, the cover painted with pomegranate and flower, the base with four-character iron-red Hongxian seal. D:6.5cm

CA\$200 - CA\$400



173  
**钟形玉牌**  
 MOTTLED JADE PLAQUE

The jade of an antique bell shape, the stone of russet tone with some brown inclusions, the surface carved in a low-relief archaic pattern. 4.9cm x 6.2cm

CA\$500 - CA\$800



174  
**德化印泥盒**  
 QINGBAI SEAL PASTE BOX

Of circular section, the cover finely molded with plum blossom, the side module with a line, overall glazed creamy-white with the unglazed interior revealing the buffware. D:6.5cm

CA\$200 - CA\$300



175  
**青白玉笔架山**  
 JADE SCHOLAR'S BRUSHREST

Carved in the form of a pierced irregularly shaped horizontal rockwork, the stone of pale celadon tone with russet inclusions. 3.5cm x 9.5cm 5.5cm

CA\$500 - CA\$800



176  
**双耳铜炉《大明宣德年制》款**  
 BRONZE CENSER XUANDE MARK

The censer of compressed globular form with a slightly everted mouth, supported on a spreading foot, the shoulder flanked with two beast-head handles, the base incised with six-character Xuande mark. H: 5.2cm

CA\$500 - CA\$800



177  
**白玉子冈牌**  
 WHITE JADE 'FIGURAL' PLAQUE

One side decorated with a human figure, the other side incised with calligraphy, the stone of pale celadon tone. 6.6cm x 4cm x 3.5cm

CA\$500 - CA\$800





178

**白玉花卉牌**

WHITE JADE 'FLORAL' PLAQUE

One face carved with chrysanthemum, the reverse with poney, all below a ruyi decorative pattern, the corner with russet inclusion. 3.9cm x 6.2cm x 0.7cm

CA\$500 - CA\$800



179

**玛瑙玉环**

AN AGATE RING PENDANT

Of circular form, the smoothly polished stone carved with an archaistic pattern, the stone of celadon tone and some russet inclusions. D:6cm

CA\$300 - CA\$500



180

**玉扳指四个一组**

A SET OF FOUR JADE THUMB RINGS

The set comprising of four jade thumb ring, three of them with similar looking, of cylindrical form, the fourth one carved on the exterior with an archaistic pattern D:3.5cm.

CA\$400 - CA\$700



181

**清代白玉龙带钩**

A WHITE JADE 'DRAGON' HOOK, QING

The white jade hook is decorated with interlaced floral design, with a small hook at the back, the stone of overall creamy white tone with some yellow inclusions. 6.2cm x 2cm

CA\$800 - CA\$1,200



182  
**青白玉罗汉雕件**  
 A CELADON JADE 'LUOHAN' CARVING

Carved with a human figure wearing a long robe, the robe of pale celadon tone. 2cm x 4.4cm x 9cm

CA\$500 - CA\$800



183  
**青白玉双狮摆件**  
 A CELADON JADE 'DRAGON' CARVING

Carved with two lions in different sizes, the stone of celadon tone with russet inclusion. 4.3cm x 6.7cm x 3.8cm

CA\$500 - CA\$800



184  
**螭龙玉带钩**  
 A JADE 'CHILONG' BELT HOOK

Carved with a dragon head terminal facing an undercut Chilong on the shaft with a leafy lingzhi sprig in its mouth, the underside with a flat circular knob. 11cm x 3cm x 2.3cm

CA\$500 - CA\$800



185  
**青白玉龙钩**  
 A JADE 'DRAGON' BELT HOOK

Carved with a dragon head terminal facing bats playing amidst clouds, the underside with a flat circular knob. L:11.5cm x 4cm

CA\$500 - CA\$800



186  
**西藏四翼金刚法器 带盒**  
 BRONZE VAJRA, TIBET

Terminating on each end with a central prong flanked by four prongs, gilt overall the body, accompanied with a fitted box. H:18.6cm

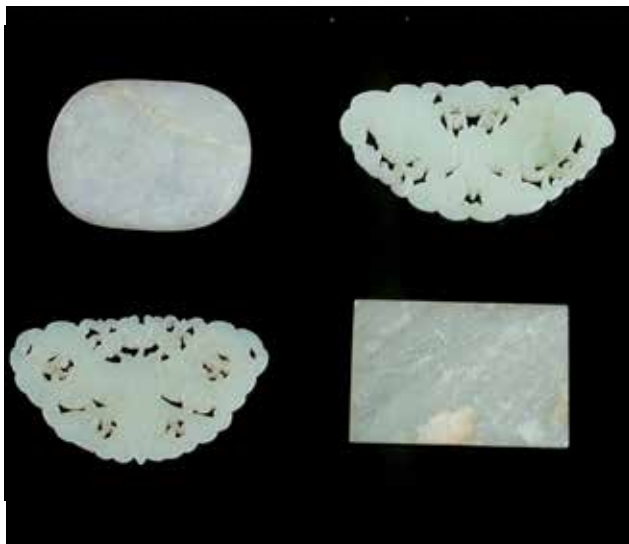
CA\$500 - CA\$1,000



187  
**玉酒杯一对**  
 A PAIR OF JADE WINE CUPS

Each cup of deep bell-shape raised on a ring foot that sits within the circular platform centering the quatrefoil stand, the stone semi-translucent celadon tone with some light russet inclusion. H:4.6cm each

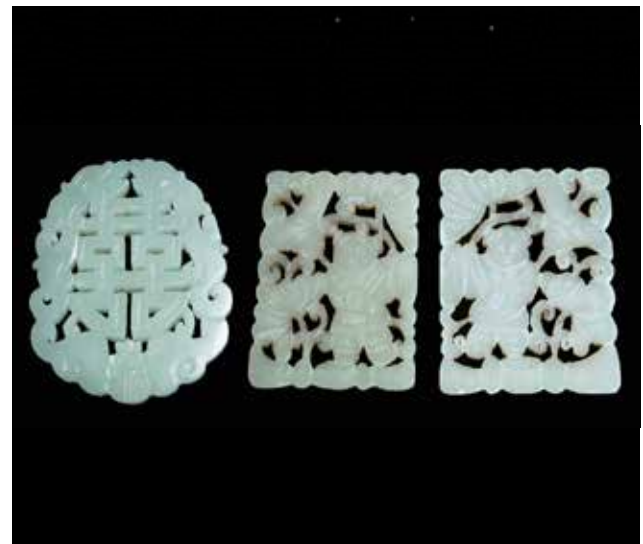
CA\$200 - CA\$400



188  
**玉牌一组四件**  
 GROUP OF FOUR JADE PENDANTS

A set of four jade pendant, two similar pendants pierced into a butterfly form, the other two carved in low-relief with floral design and archaic pattern. 4.25cm x 5.5cm; 3.9cm x 5.5cm; 4cm x 6.8cm; 4cm x 7.3cm.

CA\$300 - CA\$500



189  
**玉牌三件**  
 A GROUP OF THREE JADE PENDANTS

A pair of jade pendant finely carved and pierced with a boy playing among lotus leaf and blossom. The stone of pale celadon tone; The pendant carved and pierced on both sides with a 'double happiness' character, surrounded by a bat and branches, the stone of celadon tone. 4.3cm x 5.1cm; 7.9cm x 5.6cm; 8.2cm x 6.2cm

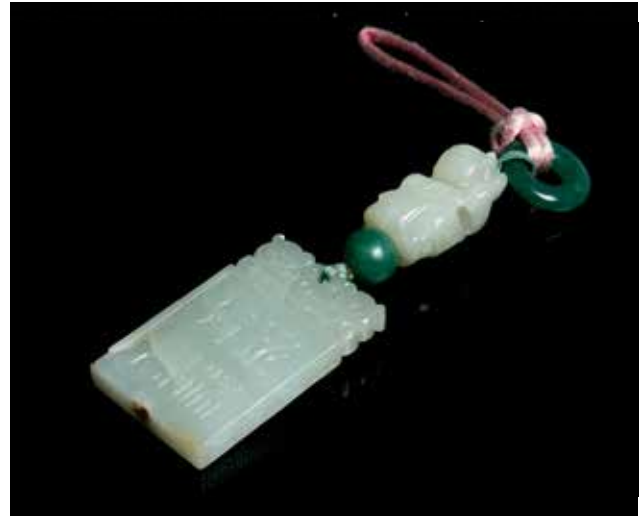
CA\$300 - CA\$500



190  
**一组八件小物件**  
 A GROUP OF EIGHT OBJECTS

Comprising of eight objects.

CA\$200 - CA\$300



191  
**玉牌挂坠**  
 A JADE PENDANT

The pendant comprising of a square form jade piece carved in low-relief, the stone of celadon tone with russet inclusion, connecting to a green jade ball which next to a white jade piece carved in the form of a human figure, and to a green jade ring. 11.5cm x 3.1cm

CA\$300 - CA\$500



192  
**福寿纹玉璧**  
 JADEITE BI AND RUYI PENDANT

The jade bi disc mounted with gold, the middle piece written with 'fu' and 'shou', the stone of overall white and celadon tone; The stone is carved into a ruyi form, the middle carved with lotus, the stone of greentone. D:5.3cm; 7.2cm x 8.9cm x 0.4cm

CA\$300 - CA\$500



193  
**小物件一组**  
 A GROUP OF FOURTY SIX OBJECTS

Comprising of forty-six small objects.

CA\$200 - CA\$300

194

**李可染 (1907-1989)**

**观瀑图 设色纸本 镜心**

LI KE RAN (1907-1989),  
WATERFALL

Depicting landscape with  
waterfall and a figure, titled  
and signed Li Ke Ran, with  
two artist's seal, water and  
color on paper. L:67.3cm  
W:45cm

CA\$50,000 - CA\$80,000





195  
**刘海粟 (1896-1994) 黄山奇峰 连框 水墨纸本**  
 LIU HAI SU (1896-1994), LANDSCAPE

Depicting landscape, signed Liu Haisu with two artist's seals, ink on paper, framed. 47.5cm x 95.5cm

CA\$5,000 - CA\$8,000



196  
**李建国 (1949 ~ ) 人体 油画连框**  
 LI JIANGUO (1949-), PAINTING

Nude lady, signed Li Jianguo, oil in canvas with frame. Provenance: collector brought from Art Toronto. Size L:79cm W:64.2cm

CA\$2,000 - CA\$4,000



197  
**潘鸿海 (1945 ~ ) 金秋 油画连框**  
 PAN HONG HAI (1945~), AUTUMN

Depicting trees with yellow leaves, signed Pan Honghai, oil on canvas. Provenance: collector brought from Art Toronto. 77 cm x 49 cm.

CA\$2,000 - CA\$4,000



198  
**范曾 (1938-) 书法 水墨纸本**  
FAN ZENG (1938-), CALLIGRAPHY

Calligraphy, signed Fan Zeng with three artist's seals, ink on paper, framed. 25.2cm x 31.8cm

CA\$1,000 - CA\$1,500



199  
**应野平 (1910—1990) 山水 水墨纸本**  
YING YE PING (1910-1990), LANDSCAPE

Landscape with waterfall amongst mountains and pine trees, titled and signed Ying Ye Ping, with one artist's seal, ink on paper. 96.5cm x 56.3cm

CA\$1,500 - CA\$2,500



200  
**边寿民 (1684-1752) 芦雁图 纸本立轴**  
 BIAN SHOU MIN(1684-1752), GOOSE

Depicting goose and reed, signature and three seals of the artist, color and ink on paper, hanging scroll, 113cm x 58cm

CA\$2,000 - CA\$4,000



201  
**紫砂观音**  
 A ZISHA GUANYIN STATUE WITH STAND

The Goddess of Mercy is shown seated with both hands resting on the raised right knee, the figure is swathed in a long, flowing robe which falls open at the chest, the maker's mark is incised on the back. 45.5cm x 21cm x 26cm

CA\$300 - CA\$500



202  
**珊瑚项链**  
 A CORAL NECKLACE

Designed as a graduated strand of pinkish-orange coral beads, joined by a sculpted gold clasp. P:48.5cm

CA\$300 - CA\$500





203  
**青金石松树瓶**  
 LAPIS LAZULI PINE TREE SHAPED VASE

A pine tree shape kyanite vase, accompanied with a wood support, the vase of tapered form, with a fitted cover. H: 17cm with stand

CA\$300 - CA\$500



204  
**康熙青花罐 (底打孔)**  
 A BLUE AND WHITE JAR

The blue and white jar of tapered globular form, rising to a cylindrical straight mouth, the exterior body decorated with four panels of dragons within the landscape, with a chip on the mouth rim. H:32cm

CA\$2,000 - CA\$3,000



205  
**玛瑙双连鼻烟壶**  
 AGATE DOUBLE SNUFF BOTTLES

Two snuff bottle attached, each of ovoid-rectangular form, carved with two horses and the maker's mark on the body, the body of brownish-orange tone, with some light yellow inclusion, accompanied with a purple and a white cover. 2.5cm x 6.5cm x 6.2cm

CA\$500 - CA\$800



206  
**木嵌螺钿双耳香炉**  
 MOTHER-OF-PEARL INLAID WOODEN CENSOR

Of compressed globular form, attached with two ears and a fitted cover, the body inlaid with mother-of-pearl decoration. W: 21.5cm H: 17cm

CA\$200 - CA\$300



207  
**石砚**  
 INK STONE

Of trapezoidal shape, the smooth riding surface carved with pine trees and a small house. 14cm x 11cm x 4cm

CA\$200 - CA\$300

# TERMS & CONDITIONS

## STUNNING ARTS GALLERY AND AUCTION INC AS AGENT

The lots listed in this catalog will be offered by Stunning Arts Gallery and Auction Inc as owner or as agent for consignor(s) subject to the following terms and conditions. By bidding at auction you agree to be bound by these Conditions of Sale.

### BEFORE THE AUCTION

Prospective buyers are strongly advised to personally examine any property in which they are interested before the auction takes place. All lots are sold "AS IS" and without recourse and neither Stunning Arts Gallery and Auction Inc nor its consignor(s) makes any warranties or representations, express or implied with respect to such lots. No statement, whether written or oral, and whether made in catalog, or in supplements to the catalog, an advertisement, a bill of sale, a saleroom posting or announcement, the remarks of an auctioneer, or otherwise, shall be deemed to create any warranty, representation or assumption of liability. It is the responsibility of prospective purchasers to inspect or have inspected each lot upon which they wish to bid, relying upon their own advisers, and to bid accordingly.

### BIDDING IN THE SALE

Refusal of Admission Stunning Arts Gallery and Auction Inc has the right, at our complete discretion, to refuse admission to the premises or participation in any auction and to reject any bid.

#### Registration before Bidding

A prospective buyer must complete and sign a registration form and provide identification before bidding. We require bank or other financial references.

#### Bidding as Principal

To bid in person, the bidder will need to register for and collect a numbered paddle before the auction begins. Proof of identity will be required. Should you be the successful buyer of a lot, please ensure that your paddle can be seen by the auctioneer and that it is your number that is called out. All lots sold will be invoiced to the name and address in which the paddle has been registered and cannot be transferred to other names and addresses. When making a bid, a bidder is accepting personal liability to pay the purchase price, including the buyer's premium, all applicable taxes and all other applicable charges.

#### Absentee Bids

If the bidder cannot attend the auction, we will be happy to execute written bids on your behalf. Absentee bids in writing must be submitted to Stunning Arts Gallery and Auction Inc at least 24 hours prior to the sale by letter or fax. In the event of identical bids, the earliest received will take precedence.

#### Reserves

Each lot may be subject to an unpublished reserve which may be changed at any time by agreement between the auctioneer and the consignor.

#### Auctioneer's Discretion

The auctioneer has the right at his or her absolute and sole discretion to refuse any bid, to advance the bidding in such a manner as he or she may decide, to withdraw any lot, and in the case of error or dispute, and whether during or after the sale, to determine the successful bidder, to continue the bidding, to cancel the sale or to re-offer and resell the item in dispute. If any dispute arises after the sale, our sale record is conclusive.

#### Successful Bid

The highest bidder acknowledged by the auctioneer will be the purchaser. In the case of a tie bid, the winning bidder will be determined by the auctioneer at his or her sole discretion. In the event of a dispute between bidders, the auctioneer has final discretion to determine the successful bidder or to re-offer the lot in dispute.

### AFTER THE SALE

#### Buyer's Premium

In addition to the hammer price, the buyer agrees to pay Stunning

Arts Gallery and Auction Inc a buyer's premium and the applicable sales tax added to the final total. Each lot sold is subject to a premium of 20% of the successful bid price of each lot up to and including \$50,000 and 18% on any amount in excess of \$50,000 as part of the purchase price. Online bidding is subject to a 23% buyers premium.

#### Deposit

The contact information provided by the purchase must be accurate and true. The auctioneer reserves the right to request a deposit to be provided before bidding and will be used against any and all purchases made at the auction.

#### Taxes

Unless exempted by law, the buyer is required to pay HST on the total purchase price including buyer's premium. For international buyers, taxes are not applicable when purchases are shipped out of country. Items shipped out of Ontario, the buyer is required to pay taxes as per the tax status of that province, whether is HST or GST.

#### Payment

Immediately after the purchase of a lot, the buyer shall pay or undertake to the satisfaction of the auctioneer with respect to payment of the whole or any part of the purchase price requested by the auctioneer, failing which the auctioneer in his sole discretion may cancel the sale, with or without re-offering the item for sale.

The buyer shall pay for all lots within 7 business days from the date of the sale, after which a late charge of 2% per month on the total invoice may be incurred or the auctioneer, in his sole discretion, may cancel the sale. The buyer shall not become the owner of the lot until paid for in full. Items must be removed within 10 days from the date of sale, after which storage charges may be incurred.

Each lot purchased, unless the sale is cancelled as above, shall be held by the auctioneer at his premises or at a public warehouse at the sole risk of the buyer until fully paid for and take away.

Payment for purchases must be by cash, INTERAC direct debit (Canadian clients in person only), certified cheque (U.S. and Overseas not applicable), bank draft, electronic transfer (fee applies), and VISA or MASTER or AMERICAN EXPRESS card.

Should the item not be paid for within the time limit stated, the auctioneer, without limitation of the rights of the consignor and the auctioneer against the buyer, may resell any of the articles affected.

### SHIPPING

Shipping is provided at the buyers' expense. Stunning Arts Gallery will provide a list of shippers. The purchased items will be released with the buyers' written consent and until payment has been made in full. Shipping, packing and handling is at the entire risk of the buyer. SAG will have no liability of any loss or damage to such items.



# STUNNING ARTS GALLERY & AUCTION

## 竞投出价表 ABSENTEE/TELEPHONE BIDDING FORM

表格应以墨水笔填写，并电邮、邮寄或传真至本公司

FORMS SHOULD BE COMPLETED IN INK AND EMAILED, MAILED, OR FAXED TO THE AUCTION HOUSE

|                                            |  |                 |  |                                    |                                   |
|--------------------------------------------|--|-----------------|--|------------------------------------|-----------------------------------|
| Name:<br>名字:                               |  |                 |  | Telephone <input type="checkbox"/> | Absentee <input type="checkbox"/> |
| Phone:<br>联系电话:                            |  | Email:<br>电子邮件: |  |                                    |                                   |
| Address:<br>地址:                            |  |                 |  |                                    |                                   |
| City:<br>城市:                               |  | Province:<br>省: |  | Postal Code:<br>邮编:                |                                   |
| Credit Card Number:<br>信用卡号码:              |  |                 |  | Expiry Date:<br>到期日期:              |                                   |
| Name on Card:<br>持卡人姓名:                    |  |                 |  | CVV:<br>卡后三位安全码:                   |                                   |
| Billing Address (if different):<br>账单邮寄地址: |  |                 |  |                                    |                                   |

### IMPORTANT 重要事项

Please note that the execution of written and telephone bids is offered as an additional service for no extra charge, and at the bidder's risk. It is undertaken subject to Stunning Arts' other commitments at the time of auction, Stunning Arts, therefore cannot accept liability for failure to place such bids, whether through negligence or otherwise. 请注意书面及电话竞投是免费提供之附加服务，风险由竞投人承担，而该等服务会在本公司于拍卖时其他承诺之限下进行；因此，无论是由于疏忽或其他原因引致，本公司无需就未能做出该竞投承担责任。

| NUMBER 编号 | DESCRIPTION 名称 | MAXIMUM BID 最高竞价 |
|-----------|----------------|------------------|
|           |                | CAD\$            |
|           |                | CAD\$            |
|           |                | CAD\$            |
|           |                | CAD\$            |
|           |                | CAD\$            |
|           |                | CAD\$            |
|           |                | CAD\$            |

### DEPOSIT 押金

All absentee bidder and telephone bidder are requested by Stunning Arts to deliver to Stunning Arts a deposit of CAD\$2,000 or such higher amount as may be determined by Stunning Arts, and any financial references, guarantees and/or such other security as Stunning Arts may require in its absolute discretion as security for the bid. 本公司可要求电话竞投者以及最高单价竞投者完成预先登记程序及交付本公司 2,000 加币或其他由本公司决定之更大金额的定金及任何财务状况证明、担保或/及其他由本公司可全权酌情决定要求的抵押作为参加本公司竞投的保证。

The contract between the buyer and the seller is concluded on the striking of the auctioneer's hammer, and payment of the purchase price for any lot and any buyer's expenses is due 7 business days after the conclusion of the auction. 买家及卖家之合约于拍卖官击锤时订立，而阁下作为买家必须于拍卖会结束后 7 个工作日支付拍品之买入价及任何买家费用。

### TELEPHONE NUMBER DURING THE SALE 拍卖联络电话：

#### FOR WRITTEN/FIXED BIDS 书面竞投

- Bids will be executed for the lowest price as is permitted by other bids or reserves. 竞投将以尽可能最低之价格进行
- Where appropriate your written bids will be rounded down to the nearest amount consistent with the auctioneer's bidding increments. 如属适当，阁下之书面竞投价将会被大概调整至最接近拍卖官递增之竞投金额

#### FOR TELEPHONE BIDS 电话竞投

- Please clearly specify the telephone number on which you may be reached at the time of the sale, including the country code. We will call you from the saleroom shortly before your lot is offered. 请清楚注明于拍卖期间可联络阁下之电话号码，包括国家号码。我们会于阁下之拍品竞投前致电给阁下。

I agree that I am bound by the Condition of Business for Buyer and the Authenticity Guarantee which are published in the catalogue for the sale on purchases at auction that I make. If any bid is successful, I agree that all sales are subjected to a 20% buyer's premium added to the hammer price, 18% on any bids over CAD \$ 50,000. 本人同意接受图册内列明之给卖家的规则及保证书，是次拍卖会上的一切交易均受以上条款所约束。若竞投成功，本人愿意支付附加成交价之上的 20% 买家佣金，或以 50,000 加币以上成交的拍品之 18% 的买家佣金。

I consent to the use of this information and any other information obtained by Stunning Arts Gallery and Auction in accordance with the Guide for Absentee Bidders and Conditions of Business. I am aware that all telephone bid lines may be recorded. 本人同意 Stunning Arts Gallery and Auction 使用本人资料及根据给委托竞投者指引与给买家业务规则内而取得至其他资料。本人明白所有电话竞投会被录音。

SIGNED 签署 \_\_\_\_\_ DATE 日期 \_\_\_\_\_