



# STUNNING ARTS GALLERY & AUCTION



WINTER ESTATE ASIAN ART AUCTION

## 冬季亚洲艺术遗产拍卖会

2020年11月18日 星期三 EST 18:00 PM

平常心是道

善有居士印可  
辛未年佛秋  
善日 林如



星巖煙雨



集古得未曾有

蔡生仁兄大人屬仿甄文



作事無不可言

袁海徐子康記于穗城



# 冬季亞洲藝術遺產拍賣會

重要提示：因應 COVID-19 疫情政府要求，本次拍賣預展時間調整為 11 月 10 日 - 11 月 18 日，並且只接受預約接待，以保證客戶保持社交距離。本拍行會提供免費口罩、洗手液、消毒紙巾等防疫用品，確保客戶與員工的健康。

感謝所有朋友壹如既往地支持！

祝：身體健康，萬事如意！

Due to COVID-19 all previews are by appointment only. Please contact our auction house to make an appointment at least one day before you come to floor preview. Our preview will start on November 10 - November 18 during our store hours from 11am - 6:00pm. We will provide a free hand sanitizer and masks to make sure all attended customers in a safe environment

預展時間：11 月 10 日 - 11 月 18 日，11am - 6pm

預約方式：905-604-8288 或 [stunningartsgallery@gmail.com](mailto:stunningartsgallery@gmail.com)

客服微信號：stunningarts

拍賣時間：11 月 18 日 @ 晚上 6 點 (多倫多時間)

11 月 19 日 @ 早上 7 點 (北京時間)



## 長城畫廊·拍賣行

 liveauctioneers

  
联拍在线

invaluable



**001**  
**20 世紀 酸枝木鑲雲石傢俱十件套**  
**A TEN PIECES CHINESE CARVED SUANZHI FURNITURE 20TH C**

估价: \$4,000 - \$7,000  
 Consists of a long chair (L: 170cm W: 58cm H: 114cm), four single chairs (W: 61cm, L: 68cm, H: 103cm), a coffee table (L: 107cm, W: 50, H: 50cm), two side tables (D: 60cm, H: 56.5cm), two flower stands, (H: 82cm)

起拍: \$1500



**002**  
**19 世紀 酸枝木雕嵌大理石花幾**  
**A SUANZHI INSERT MARBLE FLOWER STAND 19TH C**

估价: \$500 - \$800  
 A Chinese Suanzhi carved insert marble flower stand, H:82.5cm

起拍: \$300



**003**  
**清 酸枝嵌大理石卷背椅一對**  
**A PAIR OF SUANZHI INSERT MARBLE CHAIRS QING**

估价: \$600-\$1000  
 The middle panel of the back carved with plum flowers, the top panel with marble stone inlaid. H: 107cm L: 51cm W: 40cm

起拍: \$400



**004**  
**民國 酸枝套幾四件一組**  
**A GROUP OF SUANZHI NESTED TABLES, REPUBLIC P**

估价: \$500-\$800  
 Consisting of four tables, of various sizes, in rectangular shape, side aprons carved with plum flowers. H: 70cm, L: 50cm, W: 36cm

起拍: \$300



**005**  
**晚清 黑漆屏風**  
**A CHINESE BLACK LACQUER SCREEN LATE QING**

估价: \$200 - \$300  
 A Chinese gilt lacquer screen with both sides decorated with landscape, flowers and birds against on a black lacquer ground, 163cm x 183cm

起拍: \$100



**007**  
**19 世紀 酸枝嵌雲石圓桌及四個圓凳**  
**A SET OF SUANZHI ROUND TABLE&4 STOOLS 19TH C**

估价: \$1,000 - \$2,000  
 Of round shape, Suanzhi wood mother-of-pearl and marble inlaid round table and four stools, table size: 82.5cm x 81cm; stool size: 33.5cm x 43.5cm

起拍: \$500



**006**  
**19 世紀 酸枝嵌螺鈿雲石太師椅對**  
**A PAIR OF SUANZHI GRAND MASTER CHAIRS 19TH C**

估价: \$1,000 - \$2,000  
 A pair of beautiful Suanzhi insert mother of pearl and mable grand master chairs, L: 59cm, W: 44cm, H: 96cm

起拍: \$500



**008**  
**20 世紀 硬木螺鈿南官椅 三件套**  
**A SET OF HARDWOOD INSERT MOTHER-OF-PEARL CHAIRS & TABLE 20TH C**

估价: \$600 - \$1,000  
 The group comprising of two horseshoe back chairs and small side table. Decorated with floral birds mother-of-pearl. Chairs: 60.5cm x 46cm x 116cm each; table: 41cm x 72.6cm x 35cm

起拍: \$300

# LOT9-L0T49: 滿地可日裔井上家族遺產



**009**  
**白玉合和二仙掛墜**  
**A CHINESE WHITE JADE**  
**PENDANT QING**

估价: \$300 - \$500  
 Of a round shape, carved two figures encircled with s shaped patterns and lotus stems. comes with a beaded hardstone necklace. Jade D: 5.5cm

Provenance: Estate of Genjiro Inoue Family.  
 來源: 滿地可日裔井上源二郎家族遺產

起拍: \$200



**012**  
**清 水晶鼻煙壺**  
**A CHINESE HAIR CRYSTAL**  
**SNUFF BOTTLE QING**

估价: \$300 - \$500  
 Of compressed ovoid form, the body featuring evenly spaced rutiles, H: 6.2cm

Provenance: Estate of Genjiro Inoue Family.  
 來源: 滿地可日裔井上源二郎家族遺產

起拍: \$200



**010**  
**清翡翠三多九如平安鎖連座**  
**A CHINESE JADEITE CARVED**  
**PLAQUE WITH STAND 19THC**

估价: \$200 - \$400  
 Of a rectangular shape, carved with scrolling clouds and incised with shou patterns. The stone of white tone with spinach green splashes. attached with a wood stand. Jade: 7.5cm x 5.5cm.

Provenance: Estate of Genjiro Inoue Family.  
 來源: 滿地可日裔井上源二郎家族遺產

起拍: \$100



**011**  
**青花鼻煙壺 雍正款**  
**A BLUE AND WHITE**  
**SNUFF BOTTLE**  
**YONGZHENG**  
**MARK**

估价: \$600 - \$1,000  
 A tall blue and white cylindrical form snuff bottle, painted with dragons and ocean waves, comes with an agate stopper, four characters Yongzheng mark at the base, H:8.6cm

Provenance: Estate of Genjiro Inoue Family.  
 來源: 滿地可日裔井上源二郎家族遺產

起拍: \$300



**013**  
**明 文昌君坐像**  
**A LORD SUPERIOR**  
**BRONZE STATUE WITH**  
**STAND MING**

估价: \$3,000 - \$6,000  
 The figure sitting upright with left hand on knee and right hand holding long beard. H: 48cm

Provenance: Estate of Genjiro Inoue Family.  
 來源: 滿地可日裔井上源二郎家族遺產

起拍: \$1,500



**014**  
**遠東文化書籍十一本**  
**ELEVEN ORIENTAL**  
**SERIES BOOKS**  
 估价: \$300 - \$500  
 A series of eleven oriental theme books, missing one book

Provenance: Estate of Genjiro Inoue Family.  
 來源: 滿地可日裔井上源二郎家族遺產

起拍: \$200



**015**  
**日軍侵華主題紀念畫冊一組**  
**A GROUP OF OLD PHOTO ALBUMS AND PHOTO**  
**FRAME**

估價: \$100 - \$200  
 A group of old photo albums and photo frame with a theme in Japanese army invasion China.

Provenance: Estate of Genjiro Inoue Family.  
 來源: 滿地可日裔井上源二郎家族遺產

起拍: \$50



**016**  
**明 龍泉山羊擺件 連座**  
**A CHINESE LONGQUAN GOAT WITH STAND,**  
**MING**

估价: \$400 - \$700  
 A Chinese Longquan goat with four legs bending inside, overall painted with celadon glaze, comes with a fitted wood stand, 14cmx15cmx8cm

Provenance: Estate of Genjiro Inoue Family.  
 來源: 滿地可日裔井上源二郎家族遺產

起拍: \$200



**017**  
**康熙 青花淨瓶 連座**  
**A CHINESE BLUE AND**  
**WHITE VASE KANGXI**  
**PERIOD**

估价: \$600 - \$1,000  
 A similar to double gourd vase with two globular sections surmounted by a tall and thin waisted neck, painted with scrolling floral patterns on clear white porcelain, comes with a wood stand, H: 20cm

Provenance: Estate of Genjiro Inoue Family.  
 來源: 滿地可日裔井上源二郎家族遺產

起拍: \$300



**018**  
**雙耳三足銅爐 道光甲辰冬定府行有恆堂造**  
**A CHINESE DOUBLE EARS TRIPOD CENSER**  
**DAOGUANG MARK**

估价: \$1,000 - \$2,000  
 The sensor of compressed form, the body attached with two loop handles, supported on a three short feet, the base inscribed with twelve characters mark, D:15.6cm

Provenance: Estate of Genjiro Inoue Family.  
 來源: 滿地可日裔井上源二郎家族遺產

起拍: \$500



**019**  
**高古玉環七個**  
**A GROUP OF SEVEN ARCHAISTIC JADE RINGS**

估价: \$200 - \$400  
 The stone of brown-yellow color. D:3.5

Provenance: Estate of Genjiro Inoue Family.  
 來源: 滿地可日裔井上源二郎家族遺產  
 起拍: \$100



**021**  
**古錢幣一組**  
**A GROUP OF CHINESE ANCIENT COINS**

估价: \$2,000 - \$4,000  
 Total of 44 pieces, of various sizes and colors.

Provenance: Estate of Genjiro Inoue Family.  
 來源: 滿地可日裔井上源二郎家族遺產

起拍: \$1,000



**020**  
**金鑲磁州茶盞**  
**A CHINESE GILT CIZHOU TEA BOWL**  
**JING DYNASTY**

估价: \$300 - \$500  
 A black glazed tea bowl, painted bamboos in gilt, D:10.6cm

Provenance: Estate of Genjiro Inoue Family.  
 來源: 滿地可日裔井上源二郎家族遺產  
 起拍: \$200



**022**  
**19 世紀 骨雕鼻煙壺**  
**A CHINESE BONE CARVED SNUFF BOTTLE, 19TH C**

估价: \$200 - \$300  
 Of flattened baluster form, the body carved with double lion fish attach to each other, with a corresponding stopper, H:6.8cm

Provenance: Estate of Genjiro Inoue Family.  
 來源: 滿地可日裔井上源二郎家族遺產  
 起拍: \$100



**023**  
**20 世紀 東林石雕香爐**  
**A CHINESE DONGLIN STONE CENSER AND COVER, 20TH C**

估价: \$200 - \$400  
 The compressed globular body on three cabriole legs issuing from animal masks, flanked with two beast head shaped handles, the domed cover surmounted by a dragon with slender coiled body, H:12.4cm

Provenance: Estate of Genjiro Inoue Family.  
 來源: 滿地可日裔井上源二郎家族遺產  
 起拍: \$100



**024**  
**民國 木雕如意擺件**  
**A CHINESE WOOD CARVED RUYI SCEPTRE, REPUBLIC P**

估价: \$200 - \$400  
 Modeled in the form of peach, pomegranate and bats. L:43cm

Provenance: Estate of Genjiro Inoue Family.  
 來源: 滿地可日裔井上源二郎家族遺產  
 起拍: \$100





**025**  
**19 世紀 酸枝帖盒**  
**A CHINESE SUANZHI DOCUMENT BOX, 19TH C**

估价: \$200 - \$400  
One Suanzhi box, of rectangular shape form. 16 x 27cm

Provenance: Estate of Genjiro Inoue Family.  
來源: 滿地可日裔井上源二郎家族遺產

起拍: \$100



**026**  
**明 菊瓣紋青瓷蓋盒**  
**A CHINESE CELADON GLAZE COVER BOX, MING**

估价: \$400 - \$600  
Of round shape, covered in celadon glaze, the domed cover decorated with chrysanthemum petals. D: 6cm  
Provenance: Estate of Genjiro Inoue Family  
來源: 滿地可日裔井上源二郎家族遺產

起拍: \$200



**027**  
**明 青瓷碗和小水盂**  
**A CELADON GLAZE BOWL AND WATERPOT, MING**

估价: \$200 - \$400  
The first a bowl rising from a short foot, interior painted with curling patterns. D: 17cm The second of compressed shape, incised with floral patterns, attached with two small looped ears on shoulder. D: 6.5cm

Provenance: Estate of Genjiro Inoue Family.  
來源: 滿地可日裔井上源二郎家族遺產

起拍: \$100



**028**  
**明 龍泉小水盂**  
**A SMALL CHINESE LONGQUAN WATERPOT, MING**

估价: \$200 - \$400  
Of compressed shape, rising up to an everted rim. overall covered in celadon glaze. H: 6cm  
Provenance: Estate of Genjiro Inoue Family.  
來源: 滿地可日裔井上源二郎家族遺產  
起拍: \$100



**029**  
**明 青白瓷水滴**  
**A CHINESE CELADON GLAZE WATER DROP, MING**

估价: \$300 - \$500  
Modelled as a pumpkin, attached with a strap handle and a short sprout. W: 9cm H: 4.8cm

Provenance: Estate of Genjiro Inoue Family.  
來源: 滿地可日裔井上源二郎家族遺產

起拍: \$200



**030**  
**清代 青花四件一組**  
**A GROUP OF CHINESE BLUE AND WHITE ARTICLES QING**

估价: \$200 - \$400  
Consist of a plate (D: 21.5cm), a teapot stand (D: 9.5cm), an oval stand (L: 9.5cm) and a modeled crane (H: 9cm).  
Provenance: Estate of Genjiro Inoue Family.  
來源: 滿地可日裔井上源二郎家族遺產

起拍: \$100



**031**  
**晚明 三鳳朝陽碟**  
**A CHINESE BLUE AND WHITE PHOENIX PLATE**  
**LATE QING**

估价: \$500 - \$800  
 Rising from a short foot, depicting three phoenixes, surrounding a flaming ball. D:21cm

Provenance: Estate of Genjiro Inoue Family.  
 來源: 滿地可日裔井上源二郎家族遺產  
 起拍: \$300



**032**  
**順治青花詩文碟**  
**A CHINESE BLUE AND WHITE PLATE SHUNZHI PERIOD**

估价: \$500 - \$800

Sides rising from a short foot, painted with flowers and leaves. D: 20.5cm

Provenance: Estate of Genjiro Inoue Family.  
 來源: 滿地可日裔井上源二郎家族遺產

起拍: \$300



**033**  
**成化款詩文青花碟**  
**A CHINESE BLUE&WHITE POETRY PLATE CHENGHUA MARK**

估价: \$500 - \$800  
 The sides rising from a flat base to a flaring rim, decorated with a landscape scene and calligraphy, the base with a six mark chenghua mark. D: 21.5cm  
 Provenance: Estate of Genjiro Inoue Family.  
 來源: 滿地可日裔井上源二郎家族遺產  
 起拍: \$300



**034**  
**晚清 粉彩碟兩個**  
**TWO CHINESE FAMILLE ROSE PLATES**  
**LATE QING**

估价: \$200 - \$400  
 The first depicting fishes and a shrimp, D: 22cm The second depicting figurines and plants in panels. D: 24cm

Provenance: Estate of Genjiro Inoue Family.  
 來源: 滿地可日裔井上源二郎家族遺產

起拍: \$100



**035**  
**清 瑪瑙鼻煙壺兩個**  
**TWO AGATE SNUFF BOTTLES, QING**

估价: \$300 - \$500  
 The first of a compressed globular shape, in cloudy white color. H: 6.3cm The second in black color, with white and blue straps. H: 4.5cm  
 Provenance: Estate of Genjiro Inoue Family.  
 來源: 滿地可日裔井上源二郎家族遺產  
 起拍: \$140



**036**  
**清 瑪瑙鼻煙壺三個**  
**THREE AGATE SNUFF BOTTLES, QING**

估价: \$400 - \$700

The first two of round shapes, in brown and milky transparent color respectively, the third in slender shape. H: 5.5cm, 5.8cm, 7cm

Provenance: Estate of Genjiro Inoue Family.  
 滿地可日裔井上源二郎家族遺產  
 起拍: \$200



**037**  
**明 影青麻口碗 (有冲)**  
**A CELADON GLAZED BOWL**  
**(HAIRLINE), MING**

估价: \$300 - \$500  
 Rising from a short foot, up to a slightly flaring rim, the exterior incised with floral patterns. D: 18cm

Provenance: Estate of Genjiro Inoue Family.  
 滿地可日裔井上源二郎家族遺產

起拍: \$200



**038**  
**明 湖田窯小蓋瓶一對**  
**A PAIR OF HUTIAN JARS**  
**WITH COVER, MING**

估价: \$200 - \$400  
 Of baluster form, rising from a spreading foot, the body with melon straps. Overall covered in a celadon glaze. H: 12cm

Provenance: Estate of Genjiro Inoue Family.  
 來源: 滿地可日裔井上源二郎家族遺產

起拍: \$100



**039**  
**明 湖田窯三連蓋盒**  
**A Chinese Hutian Cover**  
**Box, Ming**

估价: \$400 - \$700  
 In the form of three boxes with covers molded as melons, borne on undulating stems in relief forming a handle, covered in an iridescent celadon glaze. W: 9.5cm

Provenance: Estate of Genjiro Inoue Family.  
 來源: 滿地可日裔井上源二郎家族遺產

起拍: \$200



**040**  
**明 魚藻紋小罐**  
**A CHINESE BLUE AND WHITE JAR, MING**

估价: \$500 - \$800  
 Rising from a short foot, the interior painted with fish and water grass in cobalt blue. H: 12cm

Provenance: Estate of Genjiro Inoue Family  
 來源: 滿地可日裔井上源二郎家族遺產

起拍: \$300



**041**  
**嘉靖青花花卉紋小罐**  
**A CHINESE BLUE AND WHITE JAR, JIAQING**

估价: \$1000 - \$1,200  
 The globular body rising from a short foot, painted with chrysanthemum and magpies. H: 18.5cm

Provenance: Estate of Genjiro Inoue Family  
 來源: 滿地可日裔井上源二郎家族遺產

起拍: \$600



**042**  
**雲鶴紋小罐 大明萬曆年制款**  
**A CHINESE BLUE AND WHITE JAR, WANLI MARK**

估价: \$500 - \$800  
 The globular body rising from a short foot, exterior painted with cranes and scrolling clouds. The base with a six-character wanli mark. H: 14cm

Provenance: Estate of Genjiro Inoue Family.  
 來源: 滿地可日裔井上源二郎家族遺產  
 起拍: \$300



**044**  
**18-19 世紀 萬曆款三彩大碗**  
**A CHINESE SANCAI BOWL, WANLI MARK**

估价: \$300 - \$500  
 Rising from a short foot, up to a flaring rim. exterior painted with two dragons chasing a flaming ball, the interior painted a dragon encircled by scrolling clouds. D: 29cm

Provenance: Estate of Genjiro Inoue Family.  
 來源: 滿地可日裔井上源二郎家族遺產  
 起拍: \$200



**045**  
**高古玉璧連座**  
**AN ARCHAIC JADE BI DISC, WITH STAND**

估价: \$600 - \$1,000  
 The bi of round shape, in green and brown tone. D: 13cm Stand H: 34.5cm

Provenance: Estate of Genjiro Inoue Family.  
 來源: 滿地可日裔井上源二郎家族遺產  
 起拍: \$300



**046**  
**19 世紀 五彩人物梅瓶**  
**A CHINESE WUCAI MEI VASE, 19TH C**

估价: \$500 - \$800  
 Of meiping form, the potted body gently broadening to a full, rounded shoulder and sweeping to a slightly tapered neck with an everted rim, exterior painted with figures. H: 17.5cm

Provenance: Estate of Genjiro Inoue Family.  
 來源: 滿地可日裔井上源二郎家族遺產  
 起拍: \$300

**043**  
**宋風格 龍泉盤口小瓶 連盒**  
**A LONGQUAN CELADON VASE, SONG STYLE**

估价: \$10,000 - \$20,000  
 The tapering cylindrical body surmounted by a tall columnar neck, covered overall in a sea-green glaze, comes with a fitted box. H: 12.5cm

Provenance: Estate of Genjiro Inoue Family  
 來源: 滿地可日裔井上源二郎家族遺產

起拍: \$5,000





**047**  
**民國雙耳獅蓋水晶瓶**  
**A CRYSTAL VASE AND**  
**COVER, REPUBLICAN**  
**P.**

估价: \$500 - \$800  
 The hollowed rock crystal of flattened globular form raised on a low foot, with beast-head shaped handles below a fitted cover surmounted by a recumbent beast H:16.7cm  
 Provenance: Estate of Genjiro Inoue Family.  
 來源: 滿地可日裔井上源二郎家族遺產

起拍: \$300



**048**  
**20 世紀 水晶動物雕件**  
**A CRYSTAL CARVED**  
**ANIMAL WITH STAND**  
**20TH C**

估价: \$200 - \$400  
 Vividly carved three dogs chasing each other on a rock. L: 13cm

Provenance: Estate of Genjiro Inoue Family.  
 來源: 滿地可日裔井上源二郎家族遺產

起拍: \$100



**049**  
**鄧碧珊 (1874 - 1930) 三魚**  
**瓷板畫 1929 年制**  
**DENG BISHAN (1874-1930)**  
**PORCELAIN PLAQUE 1929**

估价: \$30,000 - \$50,000  
 A famille rose porcelain plaque, of rectangular section, painted with fish and seaweed signed by Deng BiShan, and inscribed with the artist seal and a HuaYuTang red seal. made in 1929. 37.7cm x 25.1cm

Provenance: Estate of Genjiro Inoue Family.  
 來源: 滿地可日裔井上源二郎家族遺產

起拍: \$12,000



**050**  
清 硬木小筆筒  
**A SMALL CHINESE  
HARDWOOD BRUSHPOT  
QING**

估价: \$600 - \$1,000  
A small hardwood brushpot, H:  
10.4cm  
起拍: \$300



**051**  
清 瘦木隨形筆筒  
**A CHINESE BURLWOOD  
BRUSHPOT QING**

估价: \$600 - \$1,000  
A burlwood brushpot in a natural form  
shape, H:11.2cm

起拍: \$300



**052**  
清 刻人物紋竹筆筒  
**A CHINESE  
BAMBOO  
CARVED FIGURE  
BRUSHPOT  
QING**

估价: \$500 - \$800  
A bamboo brushpot,  
carved with a figure  
sitting under a tree  
and scripts, H: 13.8cm

起拍: \$200



**053**  
清 洋彩小碗一對  
**A PAIR OF CHINESE FAMILLE ROSE BOWLS QING**

估价: \$300 - \$500  
Rising from a short foot, to a slightly flaring rim. The exterior depicting  
various flowers and crops. the base with a four character mark. D: 13.5cm  
H: 5cm

起拍: \$200



**054**  
仿哥釉奩式三足爐  
**A GE-TYPE TRIPOD  
CENSER**

估价: \$500 - \$800  
The cylindrical ribbed body  
rising from three short  
feet, covered overall greyish-  
beige glaze suffused with  
crackles. D: 12cm

起拍: \$200



**055**  
明以前 龍泉暗刻鳳尾尊  
**A CHINESE INCISED LONGQUAN BEAKER  
VASE BEFORE MING**

估价: \$1,500 - \$2,500  
Of baluster form, surmounted by a tall neck with  
trumpet mouth, the ovoid body crisply molded with a  
wide frieze of blossoms borne. D:21cm H: 7.5cm

起拍: \$800



**056**  
明以前 龍泉三足八卦紋鼓釘大香爐 (有修補)

**A LARGE CHINESE TRIPOD INCENSE BURNER BEFORE MING**

估价: \$2,000 - \$3,000

Supported by mask-and-paw feet, the shallow rounded sides carved with bagua between rows of applied florettes encircling the flat rim and base, covered with a sea-green glaze falling short of the incised interior center and a raised disc on the base. (Repaired) D:32cm H:10.5cm

起拍: \$1,000



**057**  
19 世紀 銅鑲金座佛像 乾隆年制款  
**A CHINESE GILT BRONZE BUDDHA QIANLONG MARK 19TH C**

估价: \$600 - \$1,000  
The buddha seated still with legs crossed and hands rested at front. supported on a high stand, the back with a four character qianlong mark. H:33cm, L:16cm

起拍: \$300



**058**  
清 竹雕人物兩件  
**TWO CHINESE BAMBOO CARVED FIGURES QING**

估价: \$300 - CA\$500  
The first a standing figure holding a cattail fan on right hand, with left hand at upfront. The second figure wearing a loose robe, holding a basket. H: 15cm, 14cm W: 5.5cm, 6.5cm

起拍: \$200

**059**  
清 三足銅爐連蓋  
**A CHINESE BRONZE TRIPOD INCENSE BURNER QING**

估价: \$600 - \$1,000

Of archaic ding form, the compressed globular body rising from three taotie mask cabriole legs, cast around the exterior with taotie bands divided by vertical flanges and set at the rim with two large handles, H: 21cm, L:14cm

起拍: \$300



**060**  
19 世紀 錫茶葉蓋罐一對  
**A PAIR OF CHINESE PEWTER TEA CADDIES 19TH C**

估价: \$600 - \$1,000

A pair of pewter tea caddies, decorated with plum, orchid, bamboo and chrysanthemum in panels, H: 19cm, W: 18cm

起拍: \$300



**061**  
**民國 水晶葫蘆瓶擺件連底座**  
**A CHINESE CARVED ROCK**  
**CRYSTAL COVERED VASE**  
**W/STAND**

估价: \$600 - \$1,000  
 Of a double gourd form, attached with two small gourds, with a cover and a stand. H: 13.5cm, W: 10.5cm

起拍: \$300



**062**  
**民國 水晶刻龍紋蓋瓶 連底座**  
**A CHINESE CARVED**  
**DRAGON ROCK CRYSTAL**  
**COVERED VASE**

估价: \$800 - \$1,500  
 A carved rock crystal covered vase, body decorated with dragon patterns, comes with a wood stand, H: 13.5cm, W: 11.5cm

起拍: \$500



**063**  
**明以前 神獸石權席鎮**  
**A BLACK CHINESE CARVED MAT WEIGHT**  
**BEFORE MING**

估价: \$2,000 - \$3,000  
 Of square shape, incised with scrolling patterns, the middle with a large carved standing beast 24.7cm x 24.3cm x 12.5cm  
 起拍: \$1,000



**063a**  
**19 世紀 如意玉牌 連座**  
**A CELADON JADE PLAQUE, W/STAND**

估价: \$600 - \$1,000  
 The thin plaque incises with C-shaped patterns, carved with lotus flower at the bottom. The stone of celadon tone, with russet inclusions. L: 17cm  
 起拍: \$300



**064**  
**民國 景泰藍賞瓶兩個**  
**TWO CHINESE CLOISSONNE ENAMEL**  
**VASES REPUBLIC P**

估价: \$500 - \$800  
 Rising from a short foot, up to a long waisted neck, painted with lotus flowers and scrolling patterns against a green background. H: 23.2cm

起拍: \$300  
 -16-



**065**  
**老錫器五件**  
**FIVE PEWTER ARTICLES**

估价: \$300 - \$500  
 Consists of four water pots and one plain plate. H: 9cm, 6.5cm, 5cm

起拍: \$200





**066**  
**19 世紀 酸枝嵌螺鈿瓷板掛屏**  
**SUANZHI WITH PORCELAIN HANGING SCREEN 19TH C**

估价: \$3,000 - \$5,000

Fifteen pieces of plaques inlaid in a rectangular wood board, which decorated with mother of pearl. Plaques depicting figures, landscapes and flowers. Frame: 120cm x 87cm  
 起拍: \$2,000



**067**  
**老帶鉤三個**  
**THREE BELT HOOKS**

估价: \$600 - \$1,000

The first a bronze slender hook. L: 8.5cm.  
 The second a metal belt hook, of chi dragon form. L: 8.5cm  
 The third a wood belt hook, of dragon form. L: 9.5cm  
 起拍: \$300



**068**  
**明 三足鼎連蓋**  
**A LARGE CHINESE TRIPOD DING WITH COVER, MING**

估价: \$2,000 - \$4,000

Supported on three cylinder feet, the exterior incised with scrolling archaic patterns, the cover surmounted by a lingzhi shaped knob, H:33cm  
 起拍: \$1,000



**069**  
**18 世紀 唯我獨尊玉杯連盒**  
**A CHINESE WHITE JADE CUP W/STAND 18TH C**

估价: \$2,000 - \$3,000

A jade cup rising to an irregular flaring rim, decorated with studs on the exterior and a clambering Chilong handle on the side, the tone of pale celadon, comes with a box, 8.8cm x 7.8cm

起拍: \$1,000



**070**  
**清 玉石印章兩個**  
**TWO CHINESE JADE SEALS, QING**

估价: \$500 - \$800  
 The first of cubic shape, overall in celadon tone, with russet inclusions. 3cm x 3.2cm x 2.5cm The second of green tone, with russet inclusions L: 3.5cm

起拍: \$300



**071**  
**清 玉雕小物件兩個**  
**TWO CHINESE JADE CARVINGS, QING**

估价: \$500 - \$800  
 The first carved a beast with legs tucked beneath the body and the head turned sharply over the back. L: 5cm The second a carved dog, of celadon tone with russet inclusions. L: 7cm

起拍: \$300



**072**  
**老劍璣兩個**  
**TWO CHINESE SCABBARD SLIDES, QING**

估价: \$500 - \$800  
 The first of white tone, incised with c-scrolls. L: 9cm. The second of celadon tone, with russet inclusions. L: 8cm

起拍: \$300



**073**  
**民國 玉雕瑞獸兩個**  
**TWO CHINESE JADE BEAST CARVINGS, REPUBLIC P**

估价: \$500 - \$800  
 Of celadon tone, with russet inclusions. L: 4.5cm, 5cm

起拍: \$300



**074**  
**民國 玉牌三個 連座**  
**THREE CHINESE JADE PLAQUE CARVINGS, REPUBLIC P**

估价: \$500 - \$800  
 The first of celadon tone, with russet inclusions, carved a flying goddess. L: 5cm The second a carved butterfly, L: 5.5cm The third a carved flower. L: 6cm

起拍: \$300



**075**  
**明 劉海戲金蟾玉雕擺件**  
**A CHINESE JADE CARVED BOY AND TOAD, MING**

估价: \$800 - \$1,500  
 An immortal wearing loose robe, with a toad on back. The stone of celadon tone, with russet inclusions. 5cm x 4.8cm

起拍: \$400



**076**  
**玉器一組 連盒**  
**A GROUP OF CHINESE JADE ARTICLES,**  
**REPUBLIC P**

估价: \$500 - \$1,500  
 Consists of two jade discs, a thumb ring, a seal and two carvings, comes with a case, biggest one's size D:6.6cm

起拍: \$500



**077**  
**玉牌五個 連座連盒**  
**FIVE CHINESE JADE PLAQUES**

估价: \$500 - \$800  
 Of round and rectangular shape, of celadon tone, with russet inclusions, comes with a case, Largest: 6.5cm x4.5cm

起拍: \$300



**078**  
**民國 青玉龍紋水盂**  
**A CARVED DRAGON JADE BRUSH WASHER,**  
**REPUBLIC P**

估价: \$300 - \$500  
 Of compressed shape, the exterior carved with two dragons chasing a flaming ball. The base with a four character mark. D: 12.5cm

起拍: \$200



**079**  
**民國 青玉葫蘆賞瓶 連座**  
**A DOUBLE GOURD JADE**  
**BOTTLE VASE W/STAND,**  
**REPUBLIC**

估价: \$500 - \$800  
 Of celadon tone, with russet inclusions, the body attached with leaves and small gourds. H: 12cm

起拍: \$300



**080**  
**清 粉彩詩文雞缸杯**  
**大清乾隆年制款 連座**  
**A FAMILLE ROSE**  
**CHICKEN CUP**  
**QIANLONG MARK**  
**QING**

估价: \$2,000 - CA\$4,000  
 Exterior painted with a boy and a rooster, inscribed with an Imperial poem by the Qianlong Emperor, the base bearing a six-character Qianlong seal mark in underglaze blue, H: 7cm

起拍: \$1,000



**081**  
**19 世紀 福獅木雕擺件一對**  
**A PAIR OF WOOD CARVED FU LIONS 19THC**

估价: \$400 - \$700  
 Carved a pair of squatting beasts, on square stands. H: 15cm, 17cm

起拍: \$200



**082**  
**民國 五彩刀馬人物四方雙耳花瓶 底有洞**  
**A CHINESE WUCAI SQUARE VASE DRILLED HOLE, REPUBLIC P**

估价: \$200 - CA\$400  
 Depicting scholars and warriors in panels, against a green background, flanked by a pair of beast head shaped handles. Drilled Hole, the base with a six character KangXi mark. H: 48.5cm

起拍: \$100



**083**  
**18-19 世紀 五彩大罐 底有洞**  
**A CHINESE WUCAI JAR DRILLED HOLE 18-19TH C**

估价: \$600 - \$1,000  
 A WUCAI Jar, of baluster form with a rounded shoulder and straight neck, depicting boys holding lotus stems, within scrolling floral patterns, drilled hole at the base, H: 34cm

起拍: \$300



**084**  
**宋 影青窯刻蓮花紋碗**  
**A YINGQING WARE FOLIATE BOWL, SONG**

估价: \$800 - \$1,500  
 Rising from a short foot, up to a flaring rim. The interior incised lotus flowers in panels. Overall covered in white glaze. D:15.2cm

Provenance: Previous collection of H.H.Pao's Family  
 鮑恒發家族舊藏

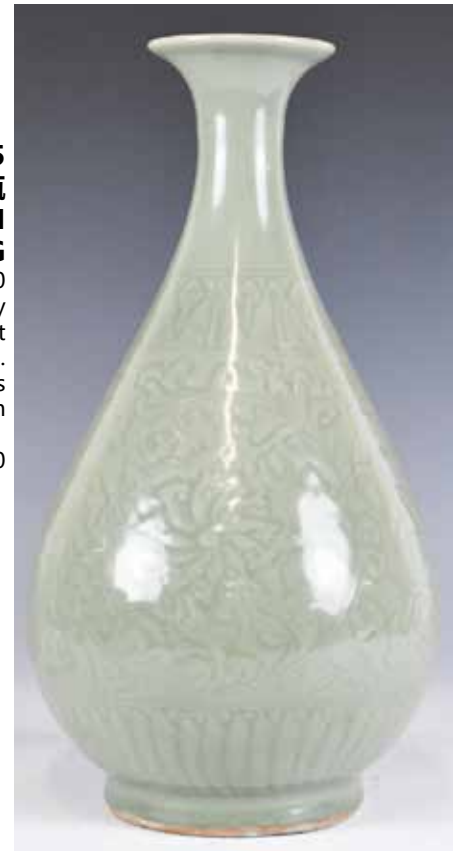
起拍: \$400



**086**  
**青釉菊瓣碗**  
**CHINESE CELADON GLAZED BOWL**

估价: \$1,000 - \$1,500  
 A bowl of conical form with a short tapered foot, covered overall in celadon glaze moulded with lobes, H: 6 cm, D: 14.5 cm

起拍: \$600



**085**  
**明 龍泉窯青釉刻蓮紋玉壺春瓶**  
**A CHINESE LONGQUAN YUHUCHUN VASE, MING**

估价: \$1,000 - \$2,000  
 Potted with a pear-shaped body rising from a gently splayed foot to a waisted neck and flared rim. The exterior incised with lotus flower patterns. H: 35cm

起拍: \$500



**087**  
**粉彩博古碗对 大清道光年制**  
**A PAIR OF FAMILLE ROSE BOWLS DAOGUANG MARK**  
 估价: \$2,500 - \$3,500  
 A pair of famille rose bowls, each painted with '100 antiques' motif in roundels surrounded by scrolling lotus, six character DAOGUANG mark in blue on the base, D: 13.6cm  
 起拍: \$2000



**088**  
**仿石纹碗 大清乾隆年制**  
**MARBLE-IMITATION BOWL QIANLONG MARK**  
 估价: \$2,000 - \$3,000  
 Of globular form rising from a cylindrical foot, the body covered overall with a pale beige glaze decorated with grey and brown streaks simulating marble, the base with six-character Qianlong mark. H: 8.5cm  
 起拍: \$1,200



**090**  
**19 世紀 銅胎畫琺瑯西洋人物圖雙耳小瓶**  
**A CHINESE BRONZE ENAMELLED VASE QIANLONG MARK**  
 估价: \$1,000 - \$1,500  
 A bronze cloisonne vase, enamelled with western figures against on a brown ground, attaches with a pair of beast mask handles, the base with four character Qianlong mark, H: 13.5cm  
 起拍: \$500



**089**  
**19 世紀 銅墨水匣三個一組**  
**THREE CHINESE BRONZE INK BOXES, 19TH C**  
 估价: \$300 - \$500  
 The first of rectangular shape, top incised with cranes. 13cm x 6.5 cm x 3cm. The second of square shape, the top incised with landscape scenes. 8cm x 8cm x 3cm The third of a round shape. D: 7cm  
 起拍: \$200



**091**  
**18 世紀 綠地龍紋小盤兩個**  
**TWO CHINESE GREEN GROUND SMALL DISHES, 18TH C**  
 估价: \$300 - \$500  
 The first of square form, the interior incised with a dragon. 10cm x 10cm The second of an oval shape. 9.5cm x 7.5cm  
 起拍: \$200



**092**  
**18 世紀 椰殼雕小杯一對**  
**TWO SMALL SILVER LINED COCONUT ENGRAVED CUPS, 18TH C**

估价: \$300 - \$500  
 Of roughly triangle shapes, exterior coconut engraved with continuous landscape scene. H:3.5cm

起拍: \$200



**093**  
**19 世紀銀鑲玉葫蘆掛件**  
**A JADE INLAID SILVER DOUBLE GOURD WALL VASE**  
**19TH**

估价: \$2,000 - \$3,000  
 Double gourd form, surface attach with floral pattern decoration with bat on the top with 2 celadon jade plaques inlaid. H:54cm x W:36cm  
 起拍: \$1,000



**094**  
**清 三足銅香爐 連座 (蓋後配)**  
**A TRIPOD BRONZE CENSER (NOT ORIGINAL COVER) QING**

估价: \$1,000 - \$2,000  
 The compressed globular body supported on three spreading feet, set to the shoulder with a pair of lion mask-handles, incised with figures in panels, with a fitted stand and a separated cover. H: 6.5 (body only)

起拍: \$500

**095**  
**18/19 世紀 景泰藍花瓶燭臺**  
**A CHINESE CLOISSONNE VASE & CANDLE STICK, 18-19TH C**

估价: \$2,000 - \$4,000  
 Vase of compressed form, with a straight neck, the top attached with seven candle stands, exterior painted with floral patterns against a black background. H: 62cm

起拍: \$1,200





**096**  
**19 世紀 銅鍍金琺瑯**  
**四明鐘**  
**A CLOISONNE**  
**PENDULUM**  
**CLOCK 19TH C**  
 估价: \$3,000 - \$5,000  
 The metal clock installed  
 in a square glass case.  
 The top with a lotus  
 flower shape studs. H:  
 40cm W: 20cm  
 (A similar item in the  
 Forbidden City)  
 (故宮博物院有类似藏品)  
 起拍: \$2,000



**097**  
**19 世紀 翡翠鼻煙壺帶證書**  
**A CHINESE JADE SNUFF BOTTLE**  
**WITH CERTIFICATE 19THC**  
 估价: \$5,000 - CA\$8,000  
 Of rounded rectangular form, with sloping  
 shoulders, a flat lip and an oval foot rim  
 surrounding a flat, recessed foot, the body  
 well-hollowed, the stone with emerald color,  
 comes with a MGI LAB certificate, H:5.4cm  
 including a stopper  
 起拍: \$3,000



**098**  
**18 世紀 碧玉扳指**  
**A CHINESE JADE THUMB RING,**  
**18TH C**  
 估价: \$600 - \$1,000  
 Of spinach green tone, mounted with a  
 metal frame and a stand, with three stud  
 feet. H: 2.5cm  
 起拍: \$300



**099**  
**民國 青白玉雕鴨**  
**A CHINESE JADE CARVED**  
**DUCK REPUBLIC PERIOD**  
 估价: \$300 - \$500  
 Carved in the form of a mandarin duck,  
 head sharply turned towards back, with  
 a lotus flower in the beak. L: 4.5cm  
 起拍: \$200



**100**  
**清 玉雕荷葉鴛鴦擺件**  
**A CHINESE JADE DUCK GROUP**  
**CARVING, QING**  
 估价: \$500 - \$800  
 Carved in open work in the form of archaic  
 mandarin, the female turning its head  
 toward the larger male, with a larged lotus  
 leaf underneath. The stone of celadon tone  
 with russet inclusions. L: 6cm  
 起拍: \$300



**101**  
**明 玉雕金蟾連座**  
**A CHINESE JADE TOAD WITH STAND, MING**

估价: \$300 - \$500  
 Croaching on legs, the body detailed with textured skin, the stone of celadon tone, with russet marks. L: 3.3cm

起拍: \$200



**102**  
**明 螭龍玉璧**  
**A CHINESE JADE CHI DRAGON DISC, QING**

估价: \$500 - \$800  
 The jade disc carved with a chi dragon, the reverse carved with S-shaped ruyi patterns. D: 5.2cm

起拍: \$300



**103**  
**19 世紀 玉石鑲銀圓鏡**  
**A CHINESE SILVER MOUNTED JADE MIRROR, 19THC**

估价: \$800 - \$1,500  
 A mirror mounted in silver, the reverse fitted with openwork carved mythical beast jade plaque and a red oval shape agate, the jade handle with a dragon head and chilong carved to the body, L: 22.5cm, W: 11cm

起拍: \$400



**104**  
**玉雕五個一組**  
**FIVE JADE ARTICLES, QING**

估价: \$600 - \$1,000  
 Jade carvings revealing figures, rooster, mandarin ducks, and lotus flowers. Stone of celadon jade, with russet, comes with a case. inclusions. L: 7.5cm

起拍: \$300



**105**  
**18 世紀 山水人物花鳥紋剔紅捧盒**  
**A CHINESE CARVED CINNABAR LACQUER COVER BOX 18TH C**

估价: \$5,000 - \$8,000  
 A cinnabar lacquer carved cover box, of round form, the body and cover carved in low relief with ancient figures and foliage pattern, the interior and the base covered in black lacquer, D: 18cm

起拍: \$2,000





**106**  
**高古陶駱駝 連座**  
**A POTTERY CAMEL**

估价: \$600 - \$1,000  
 The standing camel, with bags on back, in a walking gesture with head facing up. H: 45cm (body only)

起拍: \$300



**107**  
**純銀菊紋託盤**  
**A STERLING SILVER PEDESTAL BOWL, 19TH C**

估价: \$600 - \$1,000  
 Circular lobed form with scalloped rim, the body embossed in high relief with chrysanthemum, the underside stamped with character marks only. H: 10cm D: 13.5cm

起拍: \$300



**108**  
**清 樟木雕觀音立像**  
**A CAMPHOR WOOD CARVED STANDING GUANYIN, QING**

估价: \$800 - \$1,200  
 The carved guanyin in a standing gesture, with a ruyi in right hand, wearing a loose robe to reveal the beaded necklace on chest. H: 90cm

起拍: \$500



**109**  
**19 世紀 粉彩多子多福紋天球瓶對**  
**大清乾隆年制款**  
**A PAIR OF LARGE FAMILLE ROSE VASES, QIANLONG MARK**

估价: \$5,000 - \$10,000  
 A pair of large famille rose vases, of globular body with waisted neck, brilliantly painted with pomegranate and bats to the exterior, the base with six character Qianlong red seal mark. H: 57.5cm

起拍: \$1,500



**110**  
**民國 和田碧玉山水人物大筆筒 連座**  
**A CHINESE GREEN JADE BRUSH POT W/STAND**  
**REPUBLIC P.**

估价: \$8,000 - \$15,000  
 Of cylindrical form, exterior carved to reveal a mountain scene, with two scholars standing under pine trees, comes with a fitted rosewood stand. H: 16.8cm D: 17.2cm

起拍: \$4,000



**113**  
**珊瑚雕件連座**  
**A CORAL**  
**CARVING W/**  
**STAND**

估价: \$600 - \$1,000  
 Carved a mountain, flowers and a bird, comes with a wood stand, H: 5.5cm

起拍: \$300



**111**  
**青花蓮花紋臥足碗 大清乾隆年制款 連盒**  
**A CHINESE BLUE&WHITE BOWL, QIANLONG MARK,**  
**W/BOX**

估价: \$5,000 - \$8,000  
 With gently rounded sides rising from a concave base, painted to the exterior in rich tones of cobalt with lotus flowers. inscribed to the base with a six-character qianlong mark. D: 16cm

起拍: \$3,000



**112**  
**明 銅出戟尊**  
**A CHINESE BRONZE GU VASE, MING**

估价: \$3,000 - \$5,000  
 Decorated with archaic form of Taotie, comes with a wood stand. H: approx 32cm

起拍: \$1,500



**114**  
**珊瑚手鐲**  
**A CORAL BRACELET**

估价: \$600 - \$1,000  
 With five coral beads inlaid, mounted within floral shaped frames. L: 22cm

起拍: \$300



**115**  
**清 铜龙凤纹炉 大明宣德年制款**  
**CHINESE INCISED BRONZE CENSER, XUANDE MARK 18TH C**

估价: \$3,000 - \$5,000  
 The compressed body rising from a short foot to a tapering rim, the body carved with the mythical beasts amongst clouds and floral patterns, a six-character Xuande mark to the underside. H: 7.7 cm

起拍: \$2,000



**116**  
**民國 竹雕人物**  
**A CHINESE BAMBOO CARVED FIGURE, REPUBLICAN PERIOD**

估价: \$200 - \$300  
 Carved a sitting elderly, with right hand on knee and left hand holding a rope attached with a fish. H: 16.5cm

起拍: \$100



**118**  
**民國 青花釉裡紅印泥蓋盒**  
**A CHINESE BLUE AND WHITE PASTE COVER BOX REPUBLIC PERIOD**

估价: \$200 - \$400  
 Of round shape, blue and white and underglazed red paste, the top painted a magpie above the sea, the base with a six-character Qianlong mark. D: 9.8cm

起拍: \$100



**117**  
**粉彩龍鳳盤 大清光緒年制款**  
**A CHINESE FAMILLE ROSE DRAGON DISH GUANGXU MARK**

估价: \$500 - \$800  
 Rising from a short foot, interior painted with a phoenix and a dragon chasing a flaming ball. the base with a six character guangxu mark. D: 23cm

起拍: \$300



**119**  
清 青花印泥盒 若深  
珍藏款  
**A CHINESE BLUE  
AND WHITE PASTE  
COVER BOX QING**  
估价: \$200 - \$400  
Of round shape, the top  
depicting a landscape  
scene. The Base with  
a four character  
ruoshenzhencang mark.  
D: 8cm  
起拍: \$100



**120**  
19 世紀 礬紅描金粥  
罐  
**A CHINESE  
COPPER RED GILT  
JAR WITH COVER  
19TH C**  
估价: \$300 - \$500  
A famille rose porridge  
jar and cover, the  
shoulder set with two  
pairs of loop handles,  
painted with poetry  
and flowers, reserved  
on a gilt orange-glazed  
ground, H:20cm  
起拍: \$100



**121**  
清 青花人物故事罐  
**A CHINESE BLUE AND WHITE JAR QING**  
估价: \$600 - \$1,000  
Of globular shape, with a short straight neck, depicting ancient soldiers  
and warriors in a garden scene. H: 17.5cm  
起拍: \$300



**122**  
高古三彩陶罐  
**A Chinese  
Sancai  
Pottery Jar**  
估价: \$600 -  
\$1,000  
Of slender shape,  
oval shape, with  
four strape  
handles. the body  
attached with  
floral patterns. H:  
20cm  
起拍: \$300



**123**  
均窯小碗  
**A SMALL CHINESE JUN BOWL, MING**  
估价: \$300 - \$600

Rising from a short foot, the body with a slightly inverted  
rim, overall in blue glaze, with purple splash. D: 8.5cm

起拍: \$200



**124**  
18 世紀出口粉彩大碗  
**AN EXPORT FAMILLE ROSE BOWL, 18TH C**  
估价: \$200 - \$400

Depicting figures in a lanscape scene in panels, the interior with a purple  
lotus flower. D: 23cm

起拍: \$100



**125**  
**五彩臥足碗 道光丙午年制**  
**A WUCAI BOWL**  
**DAOGUANG MARK**

估价: \$500 - \$800  
 Depicting immortal with a peach on hand, decorated with floral patterns and butterflies. the base with a six character daoguang mark. D: 13cm

起拍: \$300



**126**  
**19 世紀 軋道粉紅折腰碗 大清乾隆年制款**  
**A PINK BOWL QIAN LONG MARK,**  
**19TH C**

估价: \$500 - \$800  
 With ogee sides rising from a short foot, the exterior painted with curling lotus flower patterns, inscribed to the base with a six-character Qianlong mark. D: 18.5cm

起拍: \$300



**127**  
**高古白玉蟬**  
**A JADE CICADA, BEFORE MING**

估价: \$600 - \$1,000  
 In the form of a stylized cicada, decorated on one side with incised details, the stone with russet inclusions. L: 7cm

起拍: \$300



**128**  
**20 世纪 青玉雕双耳盃 连座**  
**SMALL PALE CELANDON JADE WATER**  
**CUP, EARLY 20TH C**

估价: \$300 - \$400  
 Rising from a short foot, body incised with the landscape, flanked with two looped handles, with fitted wood stand. D: 10.5cm

Provenance: Important Montreal Collection  
 来源: 滿地可西人藏家  
 起拍: \$100



**129**  
**清 水晶雕鼻煙壺**  
**A CHINESE CRYSTAL**  
**SNUFF BOTTLE, QING**

估价: \$500 - \$800  
 Roughly a rectangular shape, the front carved with pine trees and the reverse with plum trees. H: 7.4cm

起拍: \$300

# LOT130 – LOT141 滿地可西人藏家



**130**  
20 世紀早期 德化白瓷木蘭  
**A BLANC DE CHINE FIGURE OF MULAN, EARLY 20TH C**

估价: \$600 - \$800  
The standing female warrior wearing an armour, with a sword in hands. H: 28.5cm

Provenance: From an important Montreal collector  
来源: 滿地可重要藏家  
起拍: \$200



**131**  
20 世紀早期 德化白瓷觀音  
**A BLANC DE CHINE FIGURE OF GUANYIN, EARLY 20TH C**

估价: \$500 - \$700  
The figure seated on a lion holding a ruyi, dressed in long flowing robes opening at the chest to reveal a beaded necklace. H:15cm

Provenance: From an important Montreal collector  
来源: 滿地可重要藏家  
起拍: \$200



**132**  
18 世紀 銅佛坐像  
**A SMALL BRONZE SITTING FIGURE OF BUDDHA, 18TH C**

估价: \$300 - \$500  
The buddha sitting a lotus flower base, with legs crossed and a bowl in hand. H: 6.5cm

Provenance: From an important Montreal collector  
来源: 滿地可重要藏家  
起拍: \$200



**133**  
19 世紀 皂石雕像一對  
**A PAIR OF SOAPSTONE CARVED FIGURES LATE 19TH C**

估价: \$300 - \$500  
Two standing warriors wearing armors and helmets, with weapons in hands. H: 23cm.

Provenance: From an important Montreal collector  
来源: 滿地可重要藏家  
起拍: \$100



**134**  
19 世紀 高身銅爐 宣德款  
**A BRONZE CENSER, XUANDE MARK 19TH C**

估价: \$1,000 - \$1,500  
The tapering body supported on three feet, inscribed to the base with a six-character xuande mark. H: 16.5cm

Provenance: From an important Montreal collector  
来源: 滿地可重要藏家  
起拍: \$500



**135**  
20 世紀早期 景泰藍蓋盒  
**A CLOISONNE DRAGON BOX, EARLY 20TH C**

估价: \$500 - \$700  
Of a rounded shape, depicting a dragon in scrolling clouds. D: 13cm

Provenance: From an important Montreal collector  
来源: 滿地可重要藏家  
起拍: \$200



**136**  
**18-19 世紀 銅花觚**  
**A BRONZE ARCHAISTIC GU**  
**SHAPED VASE, 18-19TH C**

估价: \$800 - \$1,200  
 The lobed body rising from a spreading foot to a wide flaring trumpet mouth flanked by a pair of ringed dragon handles. H: 13cm

Provenance: From an important Montreal collector  
 来源: 滿地可重要藏家  
 起拍: \$300



**137**  
**19 世紀 青花鼻煙壺**  
**A LARGE BLUE&WHITE**  
**PORCELAIN SNUFF BOTTLE**  
**19THC**

估价: \$1,000 - \$1,500  
 Of compressed shape, painted a deer herd under pine trees, inscribed to the base with a four-character kangxi mark. H: 8.5cm

Provenance: From an important Montreal collector  
 来源: 滿地可重要藏家  
 起拍: \$200



**138**  
**18-19 世紀 木雕道姑像**  
**A CARVED WOOD DAOIST MAIDEN**  
**IN CLAMSHELL, 18-19THC**

估价: \$600 - \$800  
 Carved a maiden, with a peach on hand, standing against a clamshell. With a wood stand. H: 21cm

Provenance: From an important Montreal collector  
 来源: 滿地可重要藏家  
 起拍: \$300



**139**  
**19 世紀 茄皮紫釉暗刻龍紋罐**  
**AUBERGINE GLAZE**  
**DRAGON JAR 19TH C**

估价: \$400 - \$600  
 The globular body rising from a flat base, to a tapering neck. overall covered with brown-purple glaze. H: 21cm

Provenance: From an important Montreal collector  
 来源: 滿地可重要藏家  
 起拍: \$200



**140**  
**王素 (1794-1877) 山水兩張 設色紙本**  
**TWO WANGSU(1794-1877)**  
**PAINTINGS**

估价: \$600 - \$1,000  
 The first color on paper, painted a bamboo forest and figures, with the artists' signature and seal marks. The second color on paper, painted rivers and mountains, with the artist's signature and seal mark. 44cm x32cm

Provenance: From an important Montreal collector  
 来源: 滿地可重要藏家  
 起拍: \$300



**141**  
**17-18 世紀 嵌銀絲壺型銅爐**  
**A SILVER INLAY BRONZE HU ARCHAISTIC CENSER**

估价: \$1,000 - \$1,500  
 Rising from a spreading foot, up to a slightly waisted shoulder, sides flanked with two dragon shaped handles. H: 9.5cm

Provenance: From an important Montreal collector  
 来源: 滿地可重要藏家

起拍: \$500



**142**  
**晚清 粉彩壽星**  
**A CHINESE FAMILLE ROSE SHOU XING GONG, LATE QING**

估价: \$200 - \$400  
 The longevity god wearing a loose robe, seating with a walking stick on hand. H: 20cm

起拍: \$100



**143**  
**清 磁州窯葫蘆瓶**  
**A CIZHOU DOUBLE GOURD VASE, QING**

估价: \$500 - \$800  
 Rising from a short foot, the body in a double gourd form, up to a slightly flaring mouth rim. The exterior painted with bamboos. H:28.5cm

起拍: \$300



**144**  
**晚清 三層粉彩蓋盒 (有修補)**  
**A THREE TIER BOX, LATE QING (REPAIRED)**

估价: \$200 - \$400  
 Of rectangular shape, the exterior painted with lotus flower patterns and shou patterns against a black background. H:19cm W: 20.5cm L: 12.5cm

起拍: \$100



**145**  
**晚清 粉彩龍紋橢圓盤**  
**A FAMILLE ROSE DEEP OVAL DRAGON BOWL, LATE QING**

估价: \$300 - \$500  
 Painted with dragons chasing after others tails in scrolling clouds, the interior in blue glaze, the base with a six-character mark. H:8cm L: 24cm

起拍: \$300



**146**  
**山水絹本圓光連框**  
**A LANDSCAPE SILK PAINTING**

估价: \$400 - \$700  
 Color on silk, depicting a landscape scene of rivers and mountains. With a seal mark. D: 22cm. Frame: 37cm x 37cm

起拍: \$200





**147**  
**晚清 古典人物畫長卷**  
**A CHINESE ANCIENT FIGURES LATE QING**

估价: \$600 - \$1,000  
 Color on paper, painted groups of people talking, playing and dining. 262cm x 31cm

起拍: \$300



**148**  
**晚清民國 孔雀刺繡圖連框**  
**A SILK PAINTING OF PEACOCK WITH FRAME LATE QING**

估价: \$500 - \$800  
 Color on silk, depicting a peacock and clusters of flowers. 44.5cm x 126cm

起拍: \$300



**149**  
**鄒一桂 (1686-1772) 款 菊花圖**  
**AFTER ZOU YIGUI (1686-1772)**  
**CHRYSANTHEMUM**

估价: \$600 - \$1,000  
 Color on silk. depicting clusters and studs of Chrysanthemum. Painting: 31cm x 30.5cm Frame: 45cm x 39.5cm

起拍: \$400



**151**  
**清 仙鶴補子**  
**TWO CHINESE EMBROIDERED SILK MANDARIN BADGES QING**

估价: \$300 - \$500  
 Both featuring crane in the centre with gold stitching; one with clouds surrounded, one with auspicious symbols. 28cm x 28cm

起拍: \$200



**150**  
**四臂觀音老唐卡**  
**THANGKA OF SHADAKSHARI**  
**LOKESHVARA**

估价: \$600 - \$800  
 Depicting Indian Shadakshari Lokeshvara seated in diamond position on a lotus. 174cm x 73cm  
 Property from a Canadian family, acquired in Kerala India circa 1968/69

來源: 來自加拿大西人家族, 收藏於 1968/69 印度克  
 拉拉邦  
 起拍: \$200

# LOT152 – LOT158

由著名導演孔詠霄，孫錦老師伉儷友情提供



152

趙朴初 (1907-2000) 書法條幅 水墨紙本 鏡框  
ZHAO PUCHU (1907-2000) CALLIGRAPHY

估價: \$20,000 - \$30,000

Calligraphy, ink on paper, signed by the artist with one seal, framed. Size: 25.5cm x 81cm.

Provenance: From Sun Jin and Kong Yong Xiao couples, Ms. Kong Yong Xiao was the director at BeiJing Film Studio.

來源: 上款人善霄居士暨孔詠霄。孔詠霄老師、孫錦老師伉儷為北京電影學院導演系第一屆畢業生，中國著名導演，曾在北京電影製片廠工作多年，後移民多倫多，至今活躍在中加兩國文藝界，並同眾多畫家建立了深厚友情，此次上拍的趙朴初、溥傑、韓美林、古幹、劉漢的作品，均為藝術家親贈的力作

起拍: \$10,000

趙樸初 (1907年11月5日-2000年5月21日)，安徽安慶人，中國民主促進會創始人之壹，卓越的佛教領袖、傑出的書法家、著名的社會活動家與偉大的愛國主義者。

歷任華東軍政委員會民政部副部長，華東生產救災委員會副主任，中國作家協會理事，中國書法家協會副主席，中日友好協會副會長、顧問，中國佛教協會副會長、會長，中國紅十字會名譽會長，中國人民爭取和平與裁軍協會副會長，1983年6月任政協全國委員會副主席，政協全國委員會民族和宗教委員會主任。

153

愛新覺羅·溥傑 (1907-1994) 書法條幅 水墨紙本  
AISIN GIORO PUJIE (1907-1994) CALLIGRAPHY

估價: \$2,000 - \$3,000

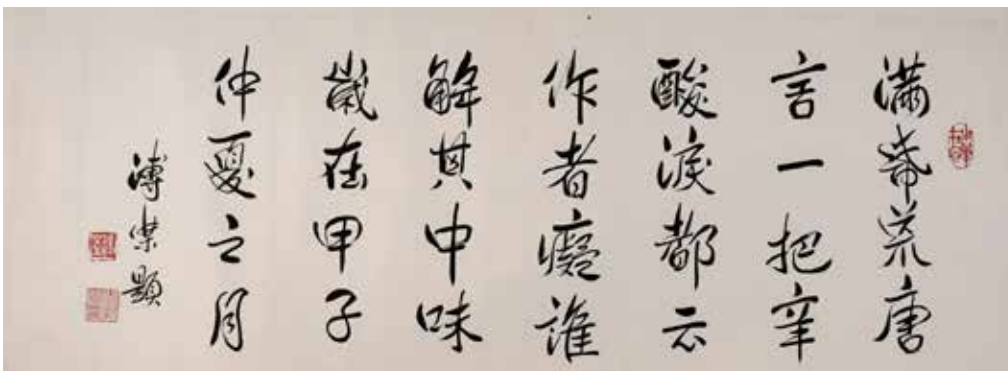
Calligraphy, ink on paper, signed by the artist with three seals.

Size: 34.5cm x 95cm.

Provenance: From Sun Jin and Kong Yong Xiao couples, Ms. Kong Yong Xiao was the director at BeiJing Film Studio.

來源: 孔詠霄老師、孫錦老師伉儷為北京電影學院導演系第一屆畢業生，中國著名導演，曾在北京電影製片廠工作多年，後移民多倫多，至今活躍在中加兩國文藝界，並同眾多畫家建立了深厚友情，此次上拍的趙朴初、溥傑、韓美林、古幹、劉漢的作品，均為藝術家親贈的力作。

起拍: \$1,000





**154**  
**韓美林 (1936- ) 金牛圖 鏡框**  
**HAN MEILIN (1936- ) GOLD OX**

估价: \$10,000 - \$20,000  
 Golden color on black paper, Inscribed and signed Meilin, with 2 artist seals, size: 37cm x 49.5cm

Provenance: From Sun Jin and Kong Yong Xiaocouples, Ms. Kong Yong Xiao was the director at Beijing Film Studio.  
 來源: 孔詠霄老師、孫錦老師伉儷為北京電影學院導演系第一屆畢業生, 中國著名導演, 曾在北京電影製片廠工作多年, 後移民多倫多, 至今活躍在中加兩國文藝界, 並同眾多畫家建立了深厚友情, 此次上拍的趙朴初、溥傑、韓美林、古幹、劉漢的作品, 均為藝術家親贈的力作。

起拍: \$5,000



**155**  
**韓美林 (1936- ) 銀馬圖 鏡框**  
**HAN MEILIN (1936- ) SILVER HORSE**

估价: \$10,000 - \$20,000  
 Silver color on black paper, Inscribed and signed Meilin, with 2 artist seals, size: 38cm x 51cm

Provenance: From Sun Jin and Kong Yong Xiaocouples, Ms. Kong Yong Xiao was the director at Beijing Film Studio.  
 來源: 孔詠霄老師、孫錦老師伉儷為北京電影學院導演系第一屆畢業生, 中國著名導演, 曾在北京電影製片廠工作多年, 後移民多倫多, 至今活躍在中加兩國文藝界, 並同眾多畫家建立了深厚友情, 此次上拍的趙朴初、溥傑、韓美林、古幹、劉漢的作品, 均為藝術家親贈的力作。

起拍: \$5,000



**156**  
**韓美林 (1936- ) 馬 設色紙本 鏡心**  
**HAN MEILIN (1936-) HORSE**  
**INK & COLOR ON PAPER**

估价: \$10,000 - \$20,000  
 Color on paper, Inscribed and signed Meilin, with 3 artist seals.  
 Size: 69cm x 88 cm

Provenance: From Sun Jin and Kong Yong Xiao couples, Ms. Kong Yong Xiao was the director at Beijing Film Studio.  
 來源: 孔詠霄老師、孫錦老師伉儷為北京電影學院導演系第一屆畢業生, 中國著名導演, 曾在北京電影製片廠工作多年, 後移民多倫多, 至今活躍在中加兩國文藝界, 並同眾多畫家建立了深厚友情, 此次上拍的趙朴初、溥傑、韓美林、古幹、劉漢的作品, 均為藝術家親贈的力作。

起拍: \$5,000



**157**  
**古幹 (1942-2020) 天上紅蓮 設色紙本 立軸**  
**GU GAN (1942-2020) LOTUS FLOWER**  
**HANGING SCROLL**

估价: \$3,000 - \$5,000  
 Color on paper, painted a goddess holding a red lotus flower, with the artist's signature and two seal marks.  
 H:132.2cm W:62.6cm  
 Provenance: From Sun Jin and Kong Yong Xiaocouples, Ms. Kong Yong Xiao was the director at Beijing Film Studio.

來源: 孔詠霄老師、孫錦老師伉儷為北京電影學院導演系第一屆畢業生, 中國著名導演, 曾在北京電影製片廠工作多年, 後移民多倫多, 至今活躍在中加兩國文藝界, 並同眾多畫家建立了深厚友情, 此次上拍的趙朴初、溥傑、韓美林、古幹、劉漢的作品, 均為藝術家親贈的力作。  
 起拍: \$1,000



**158**  
**劉漢 (1932-) 三羊開泰 設色紙本 立軸**  
**LIU HAN (1932-) SHEPHERDESS**  
**HANGING SCROLL**

估价: \$3,000 - \$5,000  
 Color on paper, painted a shepherdess and sheep, with the artist's signature and four seal marks.  
 H:136.3cm W:66.5cm  
 Provenance: From Sun Jin and Kong Yong Xiaocouples, Ms. Kong Yong Xiao was the director at Beijing Film Studio.

來源: 孔詠霄老師、孫錦老師伉儷為北京電影學院導演系第一屆畢業生, 中國著名導演, 曾在北京電影製片廠工作多年, 後移民多倫多, 至今活躍在中加兩國文藝界, 並同眾多畫家建立了深厚友情, 此次上拍的趙朴初、溥傑、韓美林、古幹、劉漢的作品, 均為藝術家親贈的力作。  
 起拍: \$1,000

**LOT159 - LOT165 黃英豪先生舊藏**



**159**  
**丁衍庸 (1902-1978) 貓 水墨紙本 鏡心**  
**Ding Yanyong(1902-1978) Large**  
**Lonely Cat**

估价: \$4,000 - \$6,000  
 Ink on paper, depicting a crawling cat, with the artist's signature and a seal mark  
 Size: 176.5cm x 94.4cm

Provenance: from the Estate of WongYik-Ho(1923-2011), Hong Kong.  
 來源: 黃英豪先生舊藏

起拍: \$1,400

**160**  
**清 丁衍庸 (1902-1978) 鳥 水墨紙本 鏡心**  
**DING YANYONG(1902-1978)**  
**BIRD ON ROCK**

估价: \$3,000 - \$4,000  
 Ink on paper, depicting a bird standing on cliff, with the artist's signature and a seal mark. 179cm x 48.5cm

Provenance: from the Estate of WongYik-Ho(1923-2011), Hong Kong.  
 來源: 黃英豪先生舊藏

起拍: \$1,000





**161**  
**丁衍庸 (1902-1978) 竹鳥水**  
**墨紙本 鏡心**  
**DING YANYONG(1902-1978)**  
**BIRD AND BAMBOO**

估价: \$1,500 - \$2,500  
 Ink on paper, depicting a bird standing on bamboo branch, with the artist's signature and a seal mark  
 69cm x 46cm  
 Provenance: from the Estate of WongYik-Ho(1923-2011), Hong Kong.  
 來源: 黃英豪先生舊藏

起拍: \$1,000



**162**  
**丁衍庸 (1902-1978) 鶴水**  
**墨紙本 鏡心**  
**DING YANYONG(1902-1978)**  
**LONGEVITY CRANE AND PINE**

估价: \$3,000 - \$4,000  
 Ink on paper, depicting a crane, with the artist's signature and a seal mark  
 180cm x 47.5cm

Provenance: from the Estate of WongYik-Ho(1923-2011), Hong Kong.  
 來源: 黃英豪先生舊藏  
 起拍: \$1,500



**163**  
**丁衍庸 (1902-1978) 魚水**  
**墨紙本 鏡心**  
**DING YANYONG(1902-1978)ASSORTED FISH**

估价: \$2,000 - \$3,000  
 Ink on paper, depicting various fish, with the artist's signature and a seal mark  
 135cm x 33.7cm  
 Provenance: from the Estate of WongYik-Ho(1923-2011), Hong Kong.  
 來源: 黃英豪先生舊藏  
 起拍: \$1,000



**164**  
**丁衍庸 (1902-1978) 蟹水**  
 墨紙本 鏡心  
**Ding**  
**Yanyong(1902-1978)**  
**Crabs**

估价: \$2,000 - \$3,000  
 Ink on paper, depicting crabs under water, with the artist's signature and a seal mark  
 135cm x 34cm

Provenance: from the Estate of WongYik-Ho(1923-2011), Hong Kong.  
 來源: 黃英豪先生舊藏  
 起拍: \$1,000



**165**  
**丁衍庸 (1902-1978) 蟋蟀**  
 設色紙本 鏡心  
**DING**  
**YANYONG(1902-1978)**  
**CRICKETS AND BERRIES**

估价: \$2,000 - \$3,000  
 Color on paper, depicting crickets on top of berries, with the artist's signature and a seal mark  
 135cm x 33cm

Provenance: from the Estate of WongYik-Ho(1923-2011), Hong Kong.  
 來源: 黃英豪先生舊藏  
 起拍: \$1,200



**166**  
**粉彩風景人物賞瓶**  
**大清乾隆年制款 (底有洞)**

**A CHINESE**  
**FAMILLE ROSE**  
**LANDSCAPE VASE**  
**(DRILLED) QING**

估价: \$3,000 - \$5,000  
 The oval body rising from a short foot, up to a everted rim, painted with mountains and river, the base with a six-character qianlong mark, drilled hole at the the base, H: 38.5cm

起拍: \$1,500



**167**  
**20 世紀 粉彩大缸連座**  
**A LARGE CHINESE FAMILLE ROSE FISH BOWL, 20TH**  
**C W/STAND**

估价: \$200 - \$300

The curved tapering sides growing to a everted rim, painted a landscape scene, with dwellers, mountains and buildings. H: body 39.5cm, stand: 45cm

起拍: \$100



**168**  
**晚清 粉彩鳥食罐和小杯**  
**A CHINESE FAMILLE-ROSE BIRD FEEDER AND A CUP QING**

估价: \$200 - \$300  
 The first an egg-shaped bird feeder, painted with figures in a garden scene. H: 5cm The second a famille-rose cup, painted scholars, the base with a pattern mark. H: 6cm

起拍: \$100



**169**  
**民國三彩人物像兩個**  
**TWO CHINESE SANCAI FIGURES, REPUBLICAN PERIOD**

估价: \$200 - \$300  
 The first a standing ancient official, wearing a loose robe, overall covered in blue, white and brown glaze. H: 27cm The second a standing figure, covered in yellow, green and white glaze. H: 24cm

起拍: \$100



**170**  
**粉彩百蝶圖小盤一對 同治年制款**  
**A PAIR OF CHINESE FAMILLE ROSE BUTTERFLY DISHES, TONGZHI MARK**

估价: \$800 - \$1,000  
 Interior painted with various butterflies against a yellow background. The base with a four character tongzhi mark. D: 18cm

起拍: \$300



**171**  
**19 世紀 粉彩開光山水紋筆筒 大清光緒年制款**  
**A CHINESE FAMILLE ROSE LANDSCAPE BRUSH POT, GUANGXU MARK**

估价: \$800 - \$1,000  
 Of cylindrical shape, decorated with colorful landscape cartouche against a pink background. The base with a six character guangxu mark. H: 15cm

起拍: \$300

**172**  
**民國 粉彩花卉紋雙耳賞瓶 乾隆年制款**  
**A CHINESE FAMILLE ROSE VASE QINGLONG MARK REPUBLIC P**

估价: \$600 - \$1,000  
 A famille rose vase, of baluster body flanked by a pair of handles, painted with rose medallions containing lush flowers on a light green ground, the base with six character Qianlong mark in blue seal, H: 35cm

起拍: \$300



# LOT173 - LOT218 鮑恒發家族舊藏



**173**  
**高古陶鴨一對連盒**  
**A PAIR OF CHINESE POTTERY DUCKS W/BOX**

估价: \$500 - \$800  
 Vividly carved ducks in pottery, comes with wood stands. H: 9.5cm L: 7cm

Provenance: Previous collection of H.H.Pao's Family  
 來源: 鮑恒發家族舊藏  
 起拍: \$200



**174**  
**高古陶雞一對連盒**  
**A PAIR OF CHINESE POTTERY ROOSTERS W/BOX TANG**

估价: \$500 - \$800  
 Vividly carved two standing roosters H:10cm L: 8cm

Provenance: Previous collection of H.H.Pao's Family  
 來源: 鮑恒發家族舊藏  
 起拍: \$200



**175**  
**高古陶罐**  
**A POTTERY JAR**

估价: \$500 - \$800  
 Of compressed form, decorated with zig-zag patterns. Attaches with two short rope handles.

Provenance: Previous H.H. Pao's FamilyCollection  
 來源: 鮑恒發家族舊藏  
 起拍: \$300



**176**  
**金 瓷州窯刻花大碗 (有修補)**  
**A CHINESE CIZHOU INCISED BOWL JIN**

估价: \$2,000 - \$3,000  
 Rising from a short foot, the interior painted with floral patterns and curves. (Repaired) D:21cm H: 7.5cm

Provenance: Previous H.H. Pao's FamilyCollection  
 來源: 鮑恒發家族舊藏  
 起拍: \$800



**177**  
**刻花料器大碗 乾隆年制款**  
**A CHINESE CARVED PEKING GLASS BOWL QIANLONG MARK**

估价: \$5,000 - \$8,000  
 Rising from a short foot, up to a flaring rim. Of dark red tone, exterior carved with plum trees and magpies. the base with a four character Qianlong mark. D:23cm H: 9.5cm

Provenance: Previous H.H. Pao's FamilyCollection  
 來源: 鮑恒發家族舊藏  
 起拍: \$2,000



**178**  
**宋 青瓷水壺兩件**  
**TWO CHINESE CELADON GLAZE ARTICLES SONG**

估价: \$500 - \$800  
 The first of globular shape, attached with two studs and a short sprout at shoulder. The second of oval shape. H: 11cm L:7cm, H: 8cm L:10cm

Provenance: Previous H.H. Pao's FamilyCollection  
 來源: 鮑恒發家族舊藏  
 起拍: \$200





**180**  
**宋 青瓷小碟**  
**A SMALL CHINESE**  
**CELADON DISH, SONG**

估价: \$500 - \$800  
 Rising from a short foot, up to an everted rim, overall covered in celadon glaze. D: 11cm H:3cm

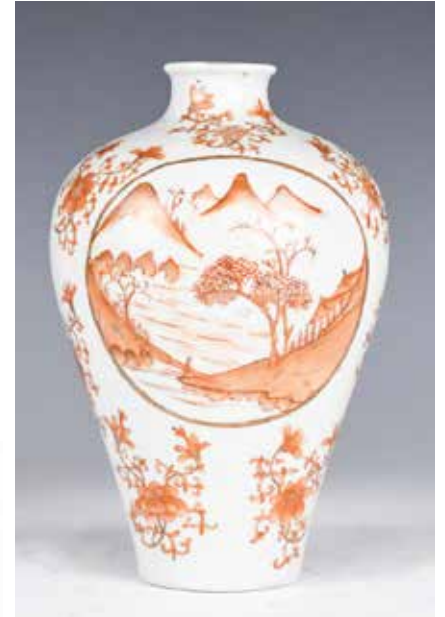
Provenance: Previous H.H. Pao's FamilyCollection  
 來源: 鮑恒發家族舊藏  
 起拍: \$200



**179**  
**宋 影青刻紋蓋盒**  
**A CHINESE CELADON**  
**MOULDED COVER BOX, SONG**

估价: \$1,000 - \$1,500  
 Of round shape, the cover moulded with lotus flower and swirl patterns, covered in celadon glaze. H: 3.5cm, D: 9.5cm

Provenance: Previous H.H. Pao's FamilyCollection  
 來源: 鮑恒發家族舊藏  
 起拍: \$400



**182**  
**霽紅描金梅瓶 居仁堂制款**  
**AN IRON RED GLAZED**  
**MEIPING VASE**

估价: \$300 - \$500  
 With broad rounded shoulders rising at a flared angle from a splayed base and sweeping to a tapered neck and a lipped mouth, exterior painted with landscapes in panels, inscribed to the base with a Jurentang mark.H:19cm

Provenance: Previous H.H. Pao's FamilyCollection  
 來源: 鮑恒發家族舊藏  
 起拍: \$200



**181**  
**17 世紀 鐵力木南官椅一對**  
**A PAIR OF OLD CHINESE TIELI NANGUAN CHAIRS**  
**17TH C**

估价: \$6,000 - \$10,000  
 With a slightly arched crestrail with a central shaped foliate medallion, the armrests continuing in a curve to the corner posts, legs joined by a low stretcher and a shaped. H: 99cm, L: 58.5cm, W: 48.5cm

Provenance: Previous H.H. Pao's FamilyCollection  
 來源: 鮑恒發家族舊藏

起拍: \$3,000



**183**  
**宋 / 金朝 吉州窯茶碗**  
**A JIZHOU STENCIL**  
**CUT TEA BOWL**  
**POSSIBLY, SONG/JIN**

估价: \$1,000 - \$1,500  
 Of conical form, the interior with three paper-cut lozenge patterns. D: 11cm

Provenance: Previous H.H. Pao's FamilyCollection  
 來源: 鮑恒發家族舊藏

起拍: \$200



**184**  
**19 世紀 套紅料器賞瓶**  
**A RED OVERLAY WHITE PEKING GLASS VASE, 19TH C**

估价: \$400 - \$600  
Rising from a spreading foot, the white body decorated with red leaves and flowers. H: 18.5cm

Provenance: Previous H.H. Pao's FamilyCollection  
來源: 鮑恒發家族舊藏

起拍: \$100



**185**  
**明 陶土人物坐像**  
**A MOULDED CLAY FIGURE OF AN OFFICIAL, MING DYNASTY**

估价: \$400 - \$600  
The sitting figure wearing a robe, with one hand on knee and the other in front the chest. H:20.5cm

Provenance: Previous H.H. Pao's FamilyCollection  
來源: 鮑恒發家族舊藏

起拍: \$100



**186**  
**明 銅道教尊神**  
**A BRONZE DAOIST DEITY, MING DYNASTY**

估价: \$800 - \$1,200  
The deity seated with legs crossed, wearing a loose robe, surrounded by mythical beasts. L: 14cm

Provenance: Previous H.H. Pao's FamilyCollection  
來源: 鮑恒發家族舊藏

起拍: \$200



**187**  
**晚清 哥窯水洗兩個**  
**TWO GLAZED BRUSHWASHERS, LATE QING DYNASTY**

估价: \$400 - \$600  
The first of lobed shape, covered in celadon glaze, with green splashes. The second a ge type compressed washer. D: 13.5cm  
Provenance: Previous H.H. Pao's FamilyCollection

來源: 鮑恒發家族舊藏  
起拍: \$100



**188**  
**19 世紀 料器水洗連座**  
**A MINIATURE GLASS WATERPOT, 19TH C**

估价: \$200 - \$400  
Rising from a short, the compressed body up to a short flaring rim, overall in white tone. D: 5.7cm  
Provenance: H.H. PAO's previous collection.

來源: 鮑恒發家族舊藏  
起拍: \$100



**189**  
**17/18 世紀 黑漆螺鈿小盤三個**  
**A BLACK LAQ BURGAUTE BOWL AND TWO LACQUER DISHES**

估价: \$400 - \$600  
Consists of two small flat dishes, which decorated with landscape scenes, the other a small bowl. D: 13cm  
Provenance: Previous H.H. Pao's FamilyCollection

來源: 鮑恒發家族舊藏  
起拍: \$100



**190**  
**18 世紀 出口粉彩茶壺和小杯，盤三個**  
**A EXPORT FAMILLE ROSE TEAPOT T/W 3 WARES,**  
**18TH C**

估价: \$300 - \$500  
 The teapot with a looped handle and curved sprout, the exterior painted with flowers. H: 16cm

Provenance: Previous H.H. Pao's FamilyCollection  
 來源: 鮑恒發家族舊藏  
 起拍: \$200



**191**  
**三彩陶罐和硯臺**  
**TWO SANCAI GLAZED OBJECTS (VASE**  
**AND INKSTONE)**

估价: \$200 - \$300  
 The first an oval jar, rising from a short foot, up to a straight neck and a lipped rim. The second a round pen shaped inkstone. H: 15.5cm

Provenance: Previous H.H. Pao's FamilyCollection  
 來源: 鮑恒發家族舊藏  
 起拍: \$100



**192**  
**老軸頭一組**  
**A GROUP OF ASSORTED SCROLL ROLLERS,**  
**19TH/20TH C**

估价: \$200 - \$300  
 Of various sizes and colors

Provenance: Previous H.H. Pao's FamilyCollection  
 來源: 鮑恒發家族舊藏  
 起拍: \$100



**193**  
**19 世紀 各式小杯四個一組**  
**FOUR ASSORTED CUPS (3 COCONUT, 1 ENAMELED),**  
**19TH C**

估价: \$150 - \$250  
 All of deep conical shape, one with colorfully painted flowers and leaves against a blue background, the other in monochromatic black and with floral patters. D: 8.5cm  
 Provenance: From previous H.H. Pao's Family Collection

來源: 鮑恒發家族舊藏  
 起拍: \$100



**194**  
**漢 彩色陶俑一對**  
**TWO PAINTED**  
**EARTHENWARE**  
**ATTENDANTS, HAN**  
**DYNASTY**

估价: \$300 - \$400  
 Two standing ancient soldiers, wearing uniforms, with hands rising to up front. H: 25cm

Provenance: Previous H.H. Pao's FamilyCollection  
 來源: 鮑恒發家族舊藏  
 起拍: \$100



**195**  
**宋 青白水滴和 19 世紀小物件四個**  
**A QINGBAI WATERDROP T/W 4 ASSORTED OBJECTS**

估价: \$300 - \$400  
 A celadon waterpot, with other four small objects. L: 6.5cm

Provenance: Previous H.H. Pao's FamilyCollection  
 來源: 鮑恒發家族舊藏

起拍: \$100



**196**  
**19/20 世紀 玉碟三個和玉杯一個**  
**THREE JADE SNUFF TRAYS & A MINIATURE CUP,**  
**19/20TH C**

估价: \$200 - \$300

Two trays of spinach green tone, with dark green splashes, the other tray of celadon tone, the small cup of celadon tone. D: 5cm

Provenance: Previous H.H. Pao's FamilyCollection

來源: 鮑恒發家族舊藏

起拍: \$100



**197**  
**棕玉擺件 連盒**  
**AN ARCHAISTIC MOTTLED BROWN JADE**  
**ORNAMENT**

估价: \$200 - \$400

In a waisted cylindrical shape, exterior incised with archaistic patterns. L: 4.7cm

Provenance: Previous H.H. Pao's FamilyCollection

來源: 鮑恒發家族舊藏

起拍: \$100



**198**  
**高古玉擺件三個**  
**THREE ARCHAISTIC JADE ORNAMENTS**

\$200 - \$400

Three jade carvings, of various shapes and sizes. L: 5cm

Provenance: Previous H.H. Pao's FamilyCollection

來源: 鮑恒發家族舊藏

起拍: \$100



**199**  
**19 世紀 木雕三個**  
**THREE WOOD CARVINGS, 19TH CENTURY**

估价: \$200 - \$400

The first a round wood plain plaque, the second a detailed carved thin plaque, the third a compressed water pot. D: 6cm

Provenance: Previous H.H. Pao's FamilyCollection

來源: 鮑恒發家族舊藏

起拍: \$100



**200**  
**唐風格 錯金銀粉盒**  
**A RARE SILVER COSTMETIC**  
**BOX AND COVER,**  
**TANG STYLE**

估价: \$800 - \$1,200

Of round shape, top incised with a phoenix encircled with floral patterns. D: 4.5cm

Provenance: Previous H.H. Pao's FamilyCollection

來源: 鮑恒發家族舊藏

起拍: \$200



**201**  
**漢 鎏金銅蠶八個**  
**EIGHT GILT BRONZE SILK WORMS SPOSSIBLY,**  
**HAN DYNASTY**

估价: \$400 - \$600

Roughly in L shape. L: 4cm

Provenance: Previous H.H. Pao's FamilyCollection

來源: 鮑恒發家族舊藏

起拍: \$100



**202**  
**19 世紀 玉獸和綠松石擺件**  
**GROUP OF JADE AND TURQUOISE CARVINGS, 19TH C**

估价: \$100 - \$150  
 Consists of a jade beast, a turquoise standing figure and three turquoise studs. L:3.8cm

Provenance: Previous H.H. Pao's FamilyCollection  
 來源: 鮑恒發家族舊藏  
 起拍: \$100



**203**  
**晚清 玉水洗和墨水匣**  
**JADE BRUSHWASHER AND INK BOX, LATE QING DYNASTY**

估价: \$400 - \$600  
 The brush wash of celadon tone, the ink stone in lobed shape. L: 7cm

Provenance: Previous H.H. Pao's FamilyCollection  
 來源: 鮑恒發家族舊藏  
 起拍: \$100



**204**  
**晚清 青玉蓋盒**  
**PALE CELADON JADE COSMETIC BOX AND COVER, LATE QING**

估价: \$400 - \$600  
 Of round shape, the top incised with shou patterns. D: 5cm

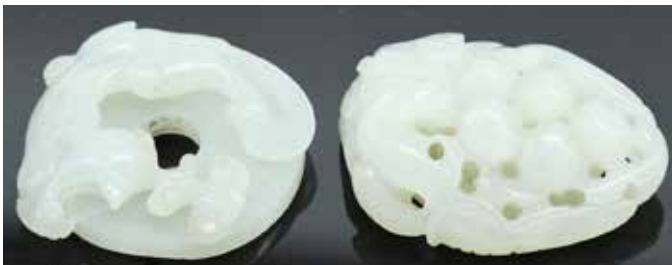
Provenance: Previous H.H. Pao's FamilyCollection  
 來源: 鮑恒發家族舊藏  
 起拍: \$100



**205**  
**清 玉印章兩枚**  
**TWO MINIATURE JADE SEALS, QING DYNASTY**

估价: \$400 - \$600  
 Both in rectangular forms, top attached with beast studs, one in celadon tone, the other in brown tone. W: 2.5cm

Provenance: Previous H.H. Pao's FamilyCollection  
 來源: 鮑恒發家族舊藏  
 起拍: \$100



**206**  
**晚清 玉雕擺件兩個**  
**TWO PALE CELADON JADE CARVINGS, LATE QING DYNASTY**

估价: \$400 - \$600  
 The first a carved bat on grapes, the second a chi-dragon on a disc D: 5cm

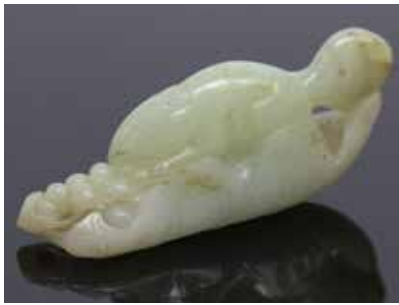
Provenance: Previous H.H. Pao's FamilyCollection  
 來源: 鮑恒發家族舊藏  
 起拍: \$100



**207**  
**19 世紀 馬上封侯玉雕擺件**  
**WHITE JADE MONKEY AND HORSE GROUP, 19TH C**

估价: \$600 - \$800  
 The monkey in the back of the horse, with the horse had the head turn to right. L: 4.8cm

Provenance: Previous H.H. Pao's FamilyCollection  
 來源: 鮑恒發家族舊藏  
 起拍: \$200



**208**  
**19 世紀 玉雕松鼠葡萄**  
**PALE CELADON JADE GRAPE**  
**AND SQUIRREL GROUP,**  
**19TH C**

估价: \$600 - \$800  
 Carved a squirrel holding a grape, on a lotus leaf. L:8.8cm

Provenance: Previous H.H. Pao's FamilyCollection  
 來源: 鮑恒發家族舊藏  
 起拍: \$200



**209**  
**18 世紀 玉雕蝙蝠對**  
**RARE MOTTLED JADE**  
**DOUBLE BAT GROUP, 18TH C**

估价: \$1,000 - \$1,500  
 Carved two bats, the stone of celadon tone, with russet inclusions. L: 5.5cm

Provenance: Previous H.H. Pao's FamilyCollection  
 來源: 鮑恒發家族舊藏  
 起拍: \$300



**210**  
**徐宗浩 (1880 - 1957) 扇面兩幅**  
**XU ZONGHAO AND SHI XUE, 2 FANS,**  
**19TH C**

估价: \$600 - \$800  
 The first calligraphy, with the artist's signature and one seal mark. The second ink on paper, depicting bamboo, with the artist's signature and seal mark.

Provenance: Previous H.H. Pao's FamilyCollection  
 來源: 鮑恒發家族舊藏  
 起拍: \$200



**211**  
**繡絲百寶圖一對**  
**PAIR OF CHINESE SILK KESI**

估价: \$300 - \$500  
 A pair of silk kesi panels featuring '100 Antique' motif, around 19th/20th century, 67 cm x 27 cm

Provenance: Previous H.H. Pao's FamilyCollection  
 來源: 鮑恒發家族舊藏  
 起拍: \$200

**212**  
**王翬 (1632 - 1717) 款 山水 設色絹本 連框**  
**AFTER WANG HUI (1632-1717) LANDSCAPES**

估价: \$500 - \$800  
 Color on silk, depicting mountains, with the artist's signature and seal mark.  
 119cm x 59cm Frame: 145cm x 73cm

Provenance: Previous H.H. Pao's FamilyCollection  
 來源: 鮑恒發家族舊藏  
 起拍: \$300





**213**  
**磁州窯花貓枕一對**  
**A PAIR OF CIZHOU PORCELAIN PILLOWS**

估价: \$300 - \$500  
 Modeled in the form of a cat, with legs tucked in, the back gently flattened in a concave rectangular panel behind the head to form the top of the pillow. L:25cm

Provenance: Previous H.H. Pao's FamilyCollection  
 來源: 鮑恒發家族舊藏  
 起拍: \$200



**214**  
**19世紀三足銅爐帶蓋**  
**A BRONZE TRIPOD CENSER WITH COVER**  
**19TH C**

估价: \$500 - \$800  
 Of archaic ding form, supported by three slender feet, with two D-shaped handles at the rim, the exterior cast with mythical beasts in panels. H:14.6cm

Provenance: Previous H.H. Pao's FamilyCollection  
 來源: 鮑恒發家族舊藏  
 起拍: \$300



**215**  
**19世紀刻蓮紋玉碗 乾隆年制款 連盒**  
**A CHINESE JADE CARVED BOWL, QIANLONG MARK, 19TH C**

估价: \$2,000 - \$4,000  
 Rising from a short foot, up to slightly flaring rim, the exterior carved with lotus flowers, inscribed to the base with a four character qianlong mark. The stone of celadon tone, with russet inclusions. D: 18cm

Provenance: Previous H.H. Pao's FamilyCollection  
 來源: 鮑恒發家族舊藏  
 起拍: \$1,200



**216**  
**民國料器盤**  
**A CHINESE PEKING GLASS PLATE, REPUBLIC P**

估价: \$300 - \$500  
 Of rounded shape, overall in pale green tone. D: 27cm  
 Provenance: Previous H.H. Pao's FamilyCollection  
 來源: 鮑恒發家族舊藏  
 起拍: \$200

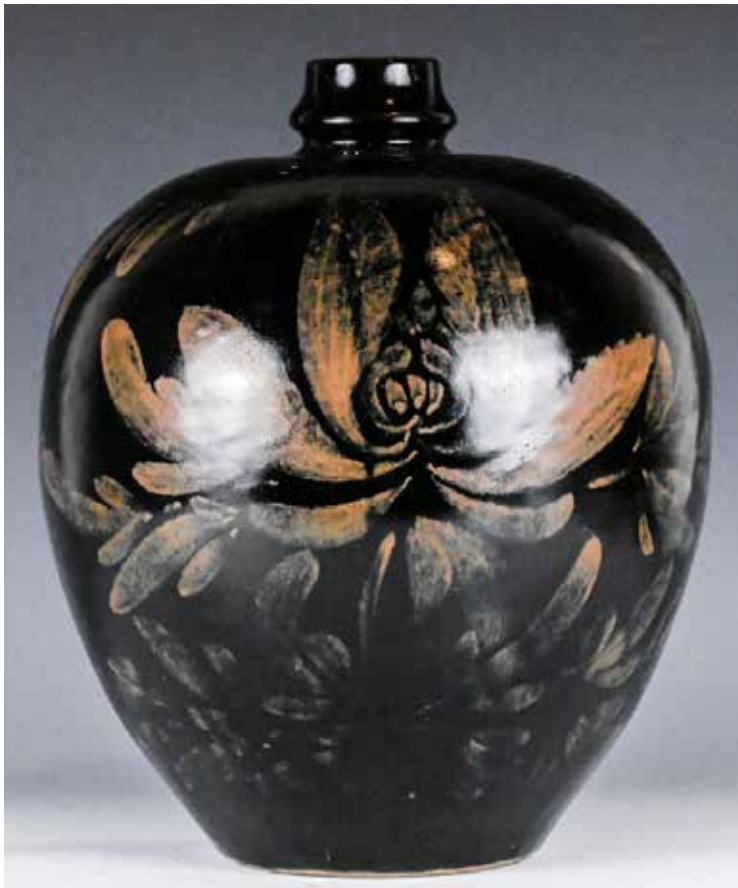


**217**  
**宋湖田窯小碟 連盒**  
**A CHINESE HUTIAN PLATE, SONG**

估价: \$1,000 - \$1,500  
 Of lobed form, the sides rising from a flat base. The interior incised with lotus flowers. D: 14.5cm

Provenance: Previous H.H. Pao's FamilyCollection  
 來源: 鮑恒發家族舊藏

起拍: \$500



**218**  
**河南窯黑釉鐵鏽花罐**  
**A LARGE HENAN RUSSET-PAINTED BLACK GLAZED**  
**JAR**

估价: \$2,000 - \$4,000

The baluster body rising from a recessed base to a narrow and short flanged neck, covered overall in a lustrous black glaze and painted in russet with stylized flowers H: 34.5 cm

Provenance: Previous H.H. Pao's Family Collection

來源: 鮑恒發家族舊藏

起拍: \$800



**218a**  
**19 世紀 白玉雕童子把件 連座**  
**A WHITE JADE BOY CARVING, W/STAND**  
**19TH C**

估价: \$600 - \$1,000

The carved boy in a wiggling gesture, with a lingzhi on the back. The stone of light celadon tone with russet inclusions L: 7cm

起拍: \$300



**219**  
**弦紋醬釉碗 大清乾隆年制 連盒**  
**A CHINESE BROWN GLAZED BOWL QIANLONG MARK & PERIOD**

估价: \$10,000 - \$20,000

Rising from straight foot, to a slightly flaring rim, decorated with string patterns, the base with a six-character qianlong mark. D: 17cm

起拍: \$5,000





**219a**  
**19 世紀 玉柄鑲銀玉牌圓鏡**  
**A CHINESE JADE, SILVER, AND**  
**ENAMEL HAND MIRROR,**  
**19TH C**

估价: \$2,000 - \$4,000

The circular looking glass mounted on a silver casing with a border of shou characters in relief alternating with hardstone inlays and enamel accents, all enclosing a white jade, the handle set with a white jade chilong belt hook. L: 23.5 cm

起拍: \$1,000



**220**  
**明 鑲金木雕韦陀立像**  
**A CHINESE GILT LACQUER FIGURE**  
**OF SKANDA, MING**

估价: \$30,000 - \$50,000

The wooden figure dressing as a warrior, standing with one foot thrusting forward, the arms and hands at waist level.

H: 105cm (total), 90.5(body)

北美西人珍藏: 1960 年代購自紐約 Rubi Oriental Arts

起拍: \$10,000



**221**  
**康熙出口青花仕女碗 大明成化年款**  
**EXPORT BLUE AND WHITE LADIES BOWL, CHENGHUA**  
**MARK, KANGXI PERIOD**

估价: \$1,000 - \$1,500

The bowl of slightly conical form with eight lobes, each lobe painted with some ancient ladies on the exterior, the base with six-character Chenghua Mark. D: 15 cm  
 起拍: \$500



**222**  
**康熙青花宮碗 大明成化年制款**  
**A CHINESE BLUE AND WHITE BOWL,**  
**CHENGHUA MARK, KANGXI PERIOD**

估价: CA\$1,000 - \$1,500

Rising from a short foot, tapering to an everted rim, the exterior with five lotus blooms borne on a continuous leafy scrolls above a petal lappet, the inner with a lotus medallion. Inscribed to the base with a six-character chenghua mark. D: 15.5cm  
 起拍: \$400



**223**  
**清 青花釉裡紅賞瓶**  
**A CHINESE BLUE AND WHITE**  
**UNDERGLAZED-RED VASE, QING**

估价: \$400 - \$600

The globular body rising from a short foot, up to a waisted neck and a flaring rim. painted "Hundred Antiques" motif against a lotus flower background. The base with a double circle mark. H: 22cm

起拍: \$300



**224**  
**清 青花鑲銀小罐 心清聞妙香款**  
**A CHINESE SILVER**  
**MOUNTED BLUE AND**  
**WHITE JAR, QING**

估价: \$500 - \$700

The globular body painted with a cluster of lotus flowers, the silver mount and cover incised with fu patterns, shou patterns and flower patterns. The base with a six-character xinqingwenmiaoxiangtu mark. H: 14.5cm

起拍: \$300



**225**  
**民國 青花三足小爐**  
**A CHINESE BLUE**  
**AND WHITE TRIPOD**  
**CENSER, REPUBLIC P**

估价: \$500 - \$800

Body of compressed globular form supported on three ruyi-shaped feet, set to the shoulder with a pair of lion mask-handles. depicted landscape scene on body. with a domed cover. W: 10cm

起拍: \$300



**226**  
**18 世紀 青玉轉心玉佩 連座**  
**A CELADON JADE PLAQUE,**  
**W/STAND 18TH C**

估价: \$2,000 - \$3,000  
 The disc carved on both sides with archaistic scrolls, set between stylised masks at the top and bottom, the central aperture depicted in openwork with a rotatable floret. H: 6cm

起拍: \$1,000



**227**  
**18-19 世紀 窯變釉天球瓶**  
**A CHINESE FLAMBE GLOBULAR VASE,**  
**18-19TH C**

估价: \$600 - \$1,000  
 With the compressed body rising from a spreading foot to a tall neck flaring at the rim, applied overall save for the base with a vitreous burgundy-red glaze streaked with deep lavender-blue, the base incised with a four-character yongzheng mark and covered. H:33cm L:21cm

起拍: \$300



**228**  
**清 五彩花鳥棒槌瓶 (口沿有冲)**  
**A WUCAI ROULEAU VASE, QING**

估价: \$600 - \$1,000  
 Painted with a blossoming magnolia tree above peony and prunus branches, all below an iron-red simple geometry shape at the shoulder and flowers and rockwork to the waisted neck, small hairline around the rim. H:23.5cm

起拍: \$300



**229**  
**明以前 龍泉蒜頭瓶**  
**A LONGQUAN**  
**GARLIC-MOUTH**  
**VASE, BEFORE MING**

估价: \$2,000 - \$4,000  
 The pear-shaped body supported on a short foot, tapering to a tall neck with a garlic-head mouth and upright rim, the exterior incised with a dragon and clouds. H: 26.5cm

起拍: \$1,000



**230**  
**清 哥窯四方水丞**  
**A GE-TYPE SQUARE WATER POT, QING**

估价: \$500 - \$800  
 The square sides rising from a flat base, to a small circular rim, top decorated with two beasts, overall in white glaze, with stylized cracks. H: 10cm

起拍: \$200



**231**  
 民國 德化觀音座像 博  
 及漁人款  
**A BLANC-DE-  
 CHINE FIGURE  
 OF GUANYIN,  
 REPUBLIC P**

估价: \$600 - \$1,000  
 The sitting guanyin  
 wearing a loose robe,  
 with the left bow resting  
 on a table, with four  
 characters Bojiyuren mark  
 H: 30cm  
 起拍: \$300



**232**  
 明 龍泉穿帶長頸瓶  
**A LONGQUAN LONG NECK VASE,  
 MING**

估价: \$2,000 - \$3,000  
 The compressed globular body rising from  
 a short foot to a wide tapering cylindrical  
 neck, applied overall with a pale celadon  
 glaze. H: 24.5cm  
 起拍: \$1,200



**233**  
 19 世紀 花鳥兩幅連框 設色絹本  
**TWO SILK PAINTINGS, W/ FRAMES 19TH C**

估价: \$300 - \$500  
 Color on silk, depicting birds and flowers, both with  
 the artist's signatures and seal marks. D: 24cm , Frame:  
 45.5cm x 50cm  
 起拍: \$200



**234**  
 18 世紀 龍紋雙獅耳銅爐 宣德款  
**A CHINESE BRONZE DRAGON CENSER,  
 XUANDE MARK 18TH C**

估价: \$4,000 - \$6,000  
 The compressed body rising from a short foot, the exterior  
 carved with dragons within scrolling clouds, flanked with two  
 lion-head handles, the base with a sixteen character xuande  
 mark. D: 18cm

起拍: \$1,500  
 -52-



**235**  
 晚清 景泰藍雙耳爐  
**A CLOISONNE TRIPOD CENSER, LATE QING**

估价: \$300 - \$500  
 Of circular form supported on three feet, applied with a  
 pair of handles, deep sides flaring up from a flat base to  
 an everted rim, decorated around the exterior with lotus  
 flowers. W: 18.5cm

起拍: \$200



**236**  
清 獸形香熏  
**A BRONZE ARCHAISTIC  
ANIMAL FORM BURNER  
AND COVER**

估价: \$300 - \$500  
Modelled after the archaic  
bronze zun, the beast with  
round protruding eyes, the legs  
incised with scrolling clouds.  
H: 18.5cm

起拍: \$200



**237**  
明 仿青銅提壺  
**A BRONZE RITUAL  
WINE VESSEL AND  
COVER, MING**

估价: \$1,500 - \$2,500  
Of hexagonal shape rising  
from short foot exterior  
incised with mythical  
beast patterns and  
scrolling cloud attached  
with strap handle comes  
with fitted cover  
H:30cm x W:20cm

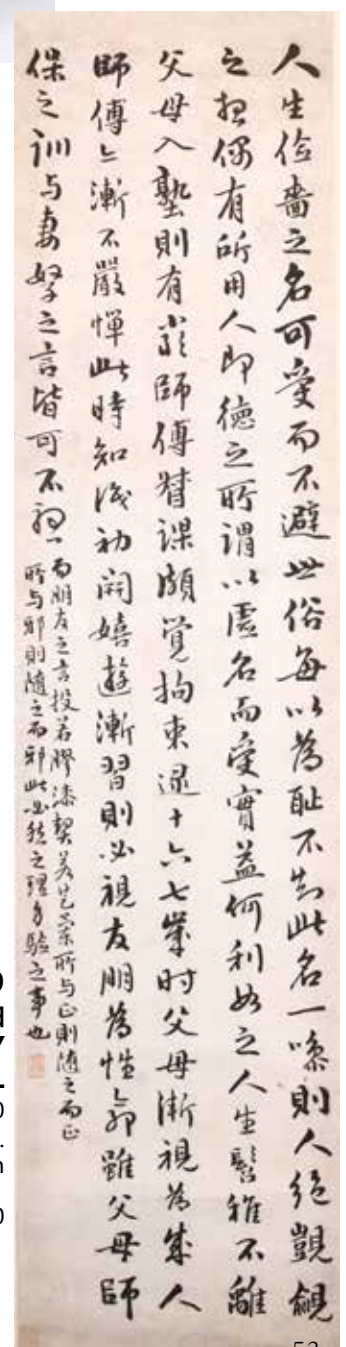
起拍: \$700



**238**  
王文治 (1730-1802) 書法條幅 水墨紙本 立軸  
**WANG WENZHI (1730-1802)  
CALLIGRAPHY HANGING SCROLL**

估价: \$3,000 - \$5,000  
Ink on paper, with the artist's signature and four seal marks. 41.5cm x 127cm

起拍: \$2,000



**239**  
擔當和尚 (1593 - 1673) 書法條幅 水墨紙本 立軸  
**DANDANG (1593 - 1673) CALLIGRAPHY  
HANGING SCROLL**

估价: \$3,000 - \$5,000  
Ink on paper, with the artist's signature and a seal mark.  
20.5cm x 86.5cm

起拍: \$2,000



**240**  
**朱汝珍 (1870-1942) 書法**  
**對聯 水墨紙本 立軸**  
**ZHU RUZHEN(1870-1942)**  
**CALLIGRAPHY COUPLETS**  
**HANGING**

估价: \$1,500 - \$2,000  
 Ink on paper, with artist's  
 signature a two seal marks,  
 30.5cmx170cmx2

起拍: \$1,000



**241**  
**徐三庚 (1826-1890) 書**  
**法對聯 水墨紙本 立軸**  
**XU SAN GENG (1826-**  
**1890) CALLIGRAPHY**  
**COUPLETS**

估价: \$10,000 - \$20,000  
 Ink on paper, with the artist's  
 signature and two seal marks.  
 22cmx101cmx2cm

起拍: \$5,000



**242**  
**黎雄才 (1910-2001) 山水 梁寒操 (1899-1975) 跋**  
**2014《華豫之門》走進多倫多 節目 珍寶台藏品**  
**LI XIONGCAI (1910-2001) LANDSCAPE WITH LIANG HANCA**

估价: \$30,000 - \$50,000  
 Ink on paper, painted a farming scene against a landscape background. with the artist's signature and a seal mark. Painting: 37cm x 127cm  
 Inscription: 12 cm x 37cm Provenance: in TV show "huayuzhimen" -Toronto Series, 2014

起拍: \$15,000



**243**  
**清中期 銅座獅一對**  
**A PAIR OF BRONZE 'LION' ORNAMENTS,**  
**18-19TH C**

估价: \$2,000 - \$4,000  
 Pair of Chinese Bronze Figures of Foo Lions. One with a pup, the other with a ball, each cast seated on a rectangular plinth with an elaborate textile cover.  
 H: 20cm, L: 13cm, W: 9cm

起拍: \$1,000



**243a**  
**清 雙獅耳銅爐 大明宣德年制款**  
**A BRONZE INCENSE BURNER XUANDE MARK, QING**

估价: \$500 - \$1,000  
 Of compressed bombé form and flanked by a pair of lion-mask handles, the base with a six-character xuande mark. W: 15cm  
 起拍: \$300



**244**  
**晚清 翡翠印章一對**  
**TWO CHINESE JADEITE**  
**STAMPS, LATE QING**

估价: \$200 - \$300  
 The first of rectangular shape, top attached with a frog. H: 3.5cm the second of rectangular shape, top with a carved bat.  
 H: 2.5cm

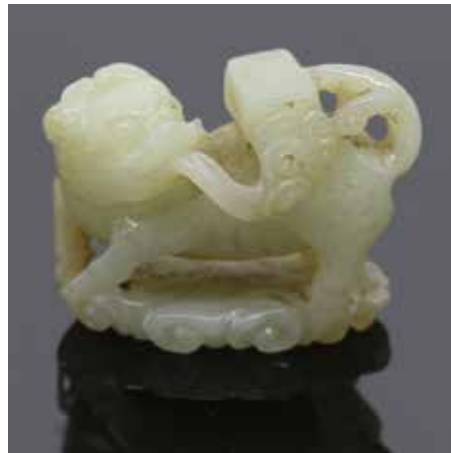
起拍: \$100



**245**  
**晚清 臥馬玉件**  
**A JADE CARVED HORSE,**  
**LATE QING**

估价: \$200 - \$300  
 Carved recumbent with legs tucked beneath the body and the head turned sharply over the back, the jade of celadon tone with russet inclusions. L: 5.5cm

起拍: \$100



**246**  
**清 玉麒麟吐書擺件**  
**A CHINESE JADE CARVED BEAST,**  
**QING**

估价: \$200 - \$300  
 The animal depicted standing on a piece of cloud its head turned to the left, the mouth issuing a stream of ruyi clouds supporting a book on its back. The stone of celadon tone, with russet inclusions.  
 H: 3.5cm L: 4.5cm

起拍: \$100



**247**  
**清 玉雕件兩件**  
**TWO CHINESE JADE CARVINGS,**  
**QING**

估价: \$200 - \$300  
 The first a carved monkey with legs crossed, the stone of celadon tone, with russet inclusions. H: 4cm The second a small rectangular jade plaque, incised with archaic patterns. 4cm x 2.5cm

起拍: \$100



**248**  
清 青玉蓋盒 玉蘭仙館款  
**A JADE COVER BOX QING**

估价: \$1,500 - \$2,500  
Of a round shape, the top incised with flowers and a butterfly, the bottom incised with a four character yulanxianguan mark. The stone of celadon tone. D: 5.5cm

起拍: \$800



**249**  
18 世紀 玉帶鉤銅筆插  
**JADE BELT HOOK BRUSH HOLDER 18TH C**

估价: \$4,000 - \$7,000  
Comprised of 2 pieces of celadon jade, all incised with bat, and a dragon head on the hook end. Each piece: L: 5cm. Bronze box of rectangle shape with floral decoration, 3 mini bronze vases inside the box.

起拍: \$2,000



**250**  
19 世紀 和田玉鑲金觀音  
**A GILT HETIAN JADE CARVED GUANYIN**

估价: \$2,000 - \$4,000  
The guanyin sitting and holding a ruyi on hand, the stone of celadon tone, partially covered in gilt. H: 21.5cm

起拍: \$1,000



**251**  
硬木鑲青白玉福壽多子紋如意  
**A HARDWOOD RUYI SCEPTRE WITH CARVED JADE PLAQUES, REPUBLIC P**

估价: \$600 - \$1,000  
Of wood, with three pale green jade oval plaques carved in low relief with peach and bat, the central plaque with bat, and the lower plaque with pomegranate. L: 50 cm

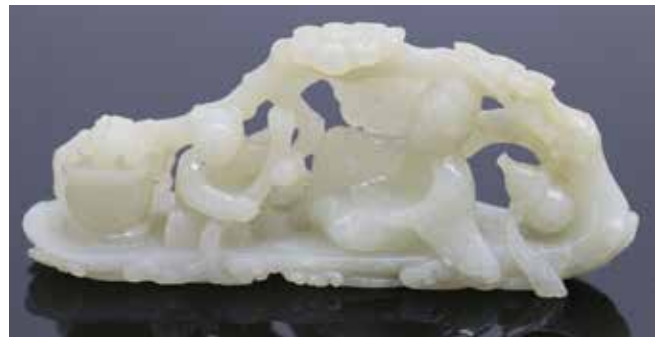
起拍: \$300



**252**  
民國 玉雕瑞獸  
**A CHINESE JADE CARVED BEAST, REPUBLIC P**

估价: \$500 - \$800  
Of celadon tone, with russet inclusions. the animal squatting on four legs. L: 4.5cm

起拍: \$300



**253**  
清 玉雕人物擺件  
**A CHINESE JADE CARVED FIGURES QING**

估价: \$1,000 - \$1,500  
Carved a scholar sitting on the boat with hands resting on knees, and a boy rowing the boat, the back carve with lingzhi. The stone overall with celadon tone. L: 11.5cm

起拍: \$500





**254**  
**晚清 竹雕茶葉罐**  
**A CHINESE BAMBOO**  
**CARVED TEA CADDY**  
**LATE QING**

估价: \$300 - \$500  
 Of cylindrical form, the exterior carved with figures, beasts in panels. H: 16cm  
 起拍: \$200



**256**  
**魚藻紋粉彩大盤 大清光緒年制**  
**LARGE FAMILLE ROSE FISH&SEAWEED**  
**PLATE GUANXU MARK**

估价: \$200 - \$300  
 Rising from a short foot, painted to the interior with seven fish swimming amongst lotus and water weed. The base with a six character guangxu mark. D: 34cm

起拍: \$100



**257**  
**瑪瑙雕蓋爐**  
**A Chinese Archaistic Agate**  
**Incense Burner**

估价: \$1,000 - \$1,500  
 The rounded sides rising from a flared foot, decorated with cloud patterns, the top attached with a mythical beast stud. H:18.5cm L: 13.5cm

起拍: \$400



**255**  
**18 世紀 粉彩花鳥將軍罐連座連蓋**  
**(蓋沿有崩口)**  
**A CHINESE**  
**FAMILLE ROSE JAR**  
**W/ COVER AND**  
**STAND 18TH C**  
**(CHIP ON COVER)**

估价: \$1,000 - \$1,500  
 One famille rose jar, of baluster body, overall painted with pheasants perching on blossom trees, with an original porcelain cover and a wood stand, H: 39.5 cm

起拍: \$500



**258**  
**19 世紀 木雕橫幅掛屏**  
**A Carved Openwork Wood Plaque 19th C**

估价: \$200 - \$400  
 Carved owls surrounded by plum flowers. L: 190cm W: 43.5cm

起拍: \$100



**259**  
**日本鑲金銅壺**  
**A LARGE GILT JAPANESE BRONZE KETTLE**

估价: \$300 - \$500  
 The bell shaped body decorated with mass of cherry blossoms, attached with a looped handle. H: 35cm

起拍: \$200



**260**  
**19 世紀 銅瑞象寶塔香爐**  
**A BRONZE ELEPHANT CENSER, LATE 19THC**

估价: \$800 - \$1,500  
 In the form of an ornately caparisoned elephant supporting a hexagon temple with a C shaped dragon on top. H:63cm W:45cm

起拍: \$400



**261**  
**民國 銅描金手爐**  
**A GILT-DECORATED BRONZE HAND WARMER REPUBLIC P**

估价: \$300 - \$500  
 Of compressed shape, surface with Chinese calligraphy, the base with dense floral patterns. W: 12.5cm

起拍: \$200



**262**  
**袁大頭錢幣三枚**  
**THREE REPUBLIC PERIOD COINS**

估价: \$500 - \$800  
 From republican period, face value of 1 yuan, incised Yuan Shikai head portrait. D: 4cm

起拍: \$300



**263**  
**天然蜜蠟大原石**  
**A BUTTERSCOTCH AMBER STONE BOULDER**

估价: \$300 - \$500  
 A butterscotch amber stone boulder, in a triangle similar form, of dark brown tone with golden yellow suffusions, height 13 cm, weight 1172 grams.

起拍: \$200



**264**  
**壽山石雕龜擺件**  
**A CHINESE CARVED TURTLE SHOUSHAN**  
**STONE**

估价: \$300 - \$500  
 Interestingly designed a carved shoushan stone turtle in a crouching position inside of an egg shell, dimension: 17cm x 10 cm x 8cm

起拍: \$200



**265**  
**藏傳佛珠**  
**A TIBETAN PRAYER BEAD, QING**

估价: \$2,000 - \$3,000  
 Including three Tibetan agate Dzi beads, comes with a leather box. L: approx 56cm. Box: 16cm x 11cm x 9.5cm

起拍: \$1,000



**266**  
**老蜜蠟項鍊**  
**AN OLD**  
**BUTTERSCOTCH**  
**AMBER NECKLACE**

估价: \$800 - \$1,000  
 One old butterscotch amber necklace, comprised of 29 oval beads, the colour of rich caramel tones with an attractive polish. Weight 73 grams, the largest bead diameter 22.84mm x 28.67mm

起拍: \$500



**267**  
**19 世紀 銅出戟尊**  
**A CHINESE BRONZE VASE,**  
**19TH C**

估价: \$300 - \$500  
 Spherical body rising from a spreading foot and rising to a flared rim, with four vertical rows of angular fret flanges running up the sides of the vase H: 13cm

起拍: \$200



**268**  
**銅鑼**  
**A TABLE GONG, 19THC**

估价: \$600 - \$1,000  
 The round gong hanging in the middle of a bamboo styled frame, comes with a beater. H: 81cm

起拍: \$300

# TERMS & CONDITIONS

## STUNNING ARTS GALLERY AND AUCTION INC AS AGENT

The lots listed in this catalog will be offered by Stunning Arts Gallery and Auction Inc as owner or as agent for consignor(s) subject to the following terms and conditions. By bidding at auction you agree to be bound by these Conditions of Sale.

### BEFORE THE AUCTION

Prospective buyers are strongly advised to personally examine any property in which they are interested before the auction takes place. All lots are sold "AS IS" and without recourse and neither Stunning Arts Gallery and Auction Inc nor its consignor(s) makes any warranties or representations, express or implied with respect to such lots. No statement, whether written or oral, and whether made in catalog, or in supplements to the catalog, an advertisement, a bill of sale, a saleroom posting or announcement, the remarks of an auctioneer, or otherwise, shall be deemed to create any warranty, representation or assumption of liability. It is the responsibility of prospective purchasers to inspect or have inspected each lot upon which they wish to bid, relying upon their own advisers, and to bid accordingly.

### BIDDING IN THE SALE

Refusal of Admission Stunning Arts Gallery and Auction Inc has the right, at our complete discretion, to refuse admission to the premises or participation in any auction and to reject any bid.

#### Registration before Bidding

A prospective buyer must complete and sign a registration form and provide identification before bidding. We require bank or other financial references.

#### Bidding as Principal

To bid in person, the bidder will need to register for and collect a numbered paddle before the auction begins. Proof of identity will be required. Should you be the successful buyer of a lot, please ensure that your paddle can be seen by the auctioneer and that it is your number that is called out. All lots sold will be invoiced to the name and address in which the paddle has been registered and cannot be transferred to other names and addresses. When making a bid, a bidder is accepting personal liability to pay the purchase price, including the buyer's premium, all applicable taxes and all other applicable charges.

#### Absentee Bids

If the bidder cannot attend the auction, we will be happy to execute written bids on your behalf. Absentee bids in writing must be submitted to Stunning Arts Gallery and Auction Inc at least 24 hours prior to the sale by letter or fax. In the event of identical bids, the earliest received will take precedence.

#### Reserves

Each lot may be subject to an unpublished reserve which may be changed at any time by agreement between the auctioneer and the consignor.

#### Auctioneer's Discretion

The auctioneer has the right at his or her absolute and sole discretion to refuse any bid, to advance the bidding in such a manner as he or she may decide, to withdraw any lot, and in the case of error or dispute, and whether during or after the sale, to determine the successful bidder, to continue the bidding, to cancel the sale or to re-offer and resell the item in dispute. If any dispute arises after the sale, our sale record is conclusive.

#### Successful Bid

The highest bidder acknowledged by the auctioneer will be the purchaser. In the case of a tie bid, the winning bidder will be determined by the auctioneer at his or her sole discretion. In the event of a dispute between bidders, the auctioneer has final discretion to determine the successful bidder or to re-offer the lot in dispute.

### AFTER THE SALE

#### Buyer's Premium

In addition to the hammer price, the buyer agrees to pay Stunning

Arts Gallery and Auction Inc a buyer's premium and the applicable sales tax added to the final total. Each lot sold is subject to a premium of 20% of the successful bid price of each lot up to and including \$50,000 and 18% on any amount in excess of \$50,000 as part of the purchase price. Online bidding is subject to a 23% buyers premium.

#### Deposit

The contact information provided by the purchase must be accurate and true. The auctioneer reserves the right to request a deposit to be provided before bidding and will be used against any and all purchases made at the auction.

#### Taxes

Unless exempted by law, the buyer is required to pay HST on the total purchase price including buyer's premium. For international buyers, taxes are not applicable when purchases are shipped out of country. Items shipped out of Ontario, the buyer is required to pay taxes as per the tax status of that province, whether is HST or GST.

#### Payment

Immediately after the purchase of a lot, the buyer shall pay or undertake to the satisfaction of the auctioneer with respect to payment of the whole or any part of the purchase price requested by the auctioneer, failing which the auctioneer in his sole discretion may cancel the sale, with or without re-offering the item for sale.

The buyer shall pay for all lots within 7 business days from the date of the sale, after which a late charge of 2% per month on the total invoice may be incurred or the auctioneer, in his sole discretion, may cancel the sale. The buyer shall not become the owner of the lot until paid for in full. Items must be removed within 10 days from the date of sale, after which storage charges may be incurred.

Each lot purchased, unless the sale is cancelled as above, shall be held by the auctioneer at his premises or at a public warehouse at the sole risk of the buyer until fully paid for and take away.

Payment for purchases must be by cash, INTERAC direct debit (Canadian clients in person only), certified cheque (U.S. and Overseas not applicable), bank draft, electronic transfer (fee applies), and VISA or MASTER or AMERICAN EXPRESS card.

Should the item not be paid for within the time limit stated, the auctioneer, without limitation of the rights of the consignor and the auctioneer against the buyer, may resell any of the articles affected.

### SHIPPING

Shipping is provided at the buyers' expense. Stunning Arts Gallery will provide a list of shippers. The purchased items will be released with the buyers' written consent and until payment has been made in full. Shipping, packing and handling is at the entire risk of the buyer. SAG will have no liability of any loss or damage to such items.



自是便是煙波客  
握管胡為  
估釣竿  
信子揮  
來魚叔  
尾產君  
應向畫中看  
己巳冬月  
郭碧珊畫於珠山



# 長城畫廊

名家畫作



Stunning Arts Gallery  
8333 Kennedy Rd., Unit 28-31 (P1)  
Markham ON L3R 1J5 朗豪坊  
Phone/Fax: 905-604-8288  
Email: [stunningartsgallery@gmail.com](mailto:stunningartsgallery@gmail.com)  
[www.stunningartsgallery.com](http://www.stunningartsgallery.com)