

Lot 001

二十世纪 花梨嵌螺钿十件套沙发
HUALI WOOD AND MOTHER-OF-PEARL INLAY
LIVING ROOM SET, 20TH C.

The set comprising of ten pieces symmetrically carved and decorated furniture inlaid with mother of pearl with dragons and flowers pierced through with open-work on the back and handle. Sofa: 65cm x 57cm x 105cm; table: 114cm x 48cm x 47cm; chair: 57.5cm x 57cm x 96cm; side table: 55cm x 76.5cm x 40cm

\$1500-\$2500



Lot 002

民国 酸枝立柜
SUANZHI WOOD CURIO DISPLAY CABINET, REPUBLIC
PERIOD

The top pierced in an open-work with grapes and bamboo, below is a pair of glass panel doors enclosing a glass-shelved cabinet mounted with bamboo-shaped wood frame all supported on four curved legs. 196cm x 100cm x 40cm

\$600-\$800



Lot 003

二十世纪 花梨供案
HUALI WOOD TWO PIECE ALTAR STAND, 20TH C.

A set of two Huali wood altar tables, of a rectangular top with a floating top supporting on four legs with pierced stretchers, accompanied a square-top panel table supported with four straight legs. Rectangular table: 151cm x 60.5cm x 33cm; Square table: 86cm x 86cm x 82cm

\$1500-\$2000



Lot 004

20 世纪 花梨餐桌酒柜套

HUALI WOOD NINE PIECE DINNING ROOM SET, 20TH C.

The set comprising of the eight-chairs table with a cabinet, the chair carved with bird and prunus on the back, the adjustable table of oval form could form into a circular shape similarly decorated with a band on the side, the cabinet also decorated in the same pattern. cabinet: 82.5cm x 222.5cm x 48cm; table: 241cm x 108cm x 81cm; armed chair: 53cm x 108cm x 48cm

\$1000-\$1500



Lot 005

张达文画 李复兴 (1936-) 书法 一组 连框

LI FUXING (1936-)& ZHANG DAWEN, COUPLER & PAINTING

Comprising of a pair of calligraphy couplets and painting, the couplet: ink on paper with one artist's seal, framed, 29.5cm x 129cm; the painting depicting blossoming poney, color and ink on paper, signed by the artist with three seals, framed, 135cm x 68.5cm.

\$500-\$800



Lot 006

创汇期 玉石花带景泰蓝盆一对

PAIR OF CHINESE HARDSTONE BONSAIS, CHUANGHUI PERIOD

Each jardiniere of rectangular section, decorated with interlaced lotus design around the exterior, the interior embellished in various hardstones with arum lily on tall stems with leaves. H:62.5cm

\$500-\$1,000

Lot 007

十八世纪 剔红大水钵

CHINESE CARVED CINNABAR LACQUER WATERPOT, 18TH C.

Of compressed globular body with short gold-tone rim and foot, carved on the rich red cinnabar exterior depicting ancient figures among trees and architectures sandwiched between two ruyi-bands, turquoise tone applied on the interior and the base. D: 17 cm, H: 6.5 cm

\$500-\$1000



Lot 008

十七 / 十八世纪 六方铜壶

LARGE BRONZE RITUAL WINE VESSEL, 17TH/18TH C.

Of flattened hexagonal archaic Gui form, flanked with two flattened mythical beasts carved handle, the body cast in low relief Taotie mask and patterns on the hexagonal pedestal foot. H: 32.8 cm

\$600-\$1000



Lot 009

粉彩六边形碗 《大清道光年制》

CHINESE FAMILLE-ROSE HEXAGONAL BOWL, DAOGUANG MARK

The bowl of rounded hexagonal form, the exterior painted with chicken, poney, scholar's rock, and chrysanthemum, the unglazed foot ring reveals the buff ware, the base with six characters Daoguang mark. H:8cm Diam: 1.5cm

\$300-\$500



Lot 010

粉彩碗对 《大清同治年制》

PAIR OF CHINESE FAMILLE-ROSE BOWLS, TONGZHI MARK

Comprising of two famille-rose bowls, one exterior decorated with the 'Eight Buddhist Emblems' and the other decorated with floral design, both interior and base glazed blue, and the base with Tongzhi mark. H:8.5cm & 10cm

\$500-\$800





Lot 011

明 黑釉三足大香炉 (耳修补)

LARGE TRIPOD BLACK GLAZE CHINESE CENSER, MING (W/ EAR REPAIR)

Of compressed globular body rising to cylindrical neck and galleried rim, supported on three cabriole legs, with two upward flanked ears, black and turquoise glazed on the body, exposed buff ware on the base, interior and foot, accompanied with a carved fitted stand and a matching cover surmounted by a purple stone, with partial repair. Censer W:30 cm H: 33 cm Total H: 45 cm

\$1,000-\$1,500



Lot 012

晚清 水晶瑞兽摆件 带座

CHINESE CRYSTAL ROCK BEAST CARVING WITH STAND, LATE QING

The horned mythical beast depicted recumbent with its head smiling and turned to the left, the transparent stone carving accompanied with a fitted wooden stand. H:16cm without stand

\$300-\$500



Lot 013

十八世纪 出口粉彩大碗 (有冲线)

LARGE EXPORT FAMILLE ROSE PUNCH BOWL, 18TH C.

Of globular body, exterior decorated with lobed panels depicting people within landscape scene, interlaced poney decorated outside the panel, the unglazed foot ring reveals the buff ware. Hairline on the body. D:28.5cm H:12.5cm

\$400-\$600



Lot 014

十九世纪 双耳三足龙纹铜炉

CHINESE TRIPOD BRONZE DOUBLE EAR CENSER, 19TH C.

Of compressed globular body rise to a straight neck and an everted mouth, all supported on three pointed feet, the body incised with a dragon, and the sides flanked with two handles. D:28.5cm H:14cm

\$200-\$300



Lot 015

十八世纪 洒蓝地描金山水图瓶台灯

EXPORT POWDER BLUE AND GILT DECORATED VASE LAMP, 18TH C.

The body of baluster form, decorated in gilt around the body with people within landscape scenes with pavilions, all reserved on a dense gilt foliate scroll and powder-blue ground, made into a lamp and attached to a fitted wooden stand. H:30cm without stand; 51.5cm whole

\$400-\$600

Lot 016

十七世纪 出口五彩花卉纹瓶台灯

EXPORT FAMILLE-VERTE FLORAL SLEEVE VASE LAMP, 17TH C.

The cylindrical form body rising to a waisted neck and slightly everted rim, the body painted in bright enamels depicting interlaced poney design, make into a light stand, attached to a fitted wooden stand. H:25cm without stand; 39cm whole

\$400-\$600



Lot 017

十九世纪 红釉赏瓶

OXBLOOD BOTTLE VASE, 19TH C.

Of globular body rising to a long waisted neck to an everted rim, the slightly pointed foot unglazed on the base and reveals the buff ware, the body glazed in oxblood red. H: 34cm

\$300-\$500



Lot 018

青花龙纹花觚 《康熙年制》款

BLUE AND WHITE DRAGON BEAKER VASE, KANGXI MARK

Of cylindrical form rising to an everted rim, the body painted with poney and dragon and the base with four-character Kangxi mark. H: 30.5cm

\$200-\$300





Lot 019

黎龙生 花鸟纸本 连框

LI LONGSHENG, CHINESE SCHOOL PAINTING OF THREE SPARROWS

Depicting three sparrows hidden within plants, color and ink on paper, signed with artist's name and one seal of the artist. 29.5cm x 80cm without frame

\$200-\$300

Lot 020

晚清 青白玉人物

SMALL PALE CELADON JADE CARVED MONK, LATE QING

Worked in the form of a seated monk with his two hands resting on the legs, the stone of an even pale celadon tone. 4cm x 4.5cm x 2cm

\$300-\$500



Lot 021

民国 三层粉彩盖碗 《同治年制》款

THREE-TIERED FAMILLE-ROSE FLORAL BOWL, TONGZHI MARK, REPUBLICAN P.

Comprising of four sections, overall of a cylindrical form, the exterior decorated with famille-rose peony and prunus, the cover painted with lotus and with a blue knob, the base with four-character Tongzhi mark. D:13.5cm x H:15cm

\$100-\$150

Lot 022

玉石盆景

CHINESE JADE BONSAI

The plants carved with hardstones in various color, depicting prunus-like flowers, within a pale green rectangular pot. H:20cm

\$100-\$150





Lot 023
二十世纪初 刺绣女鞋一对
PAIR OF SILK LADIES ' SHOES, C. 1920

With a high heel and pointed toe, the orange ground embroidered in blue threads with flowers, the shoes for bound feet is comprising of two parts and set on a wooden base. 8.5cm x 10.5cm x 5cm

\$100-\$150



Lot 024
十九世纪 铜瓮一对
PAIR OF BRONZE HANDLED URNS, 19TH C.

Of globular form. the urns with band decorations of interlaced floral, rising to a long neck and a straight rim, each supported on four rounded feet, attached with a handle. H:18cm each

\$300-\$500



Lot 025
清 玉熊雕件
CHINESE JADE BEAR CARVING, QING

The jade carved in the form of a bear, drilled with a hole from the back to the belly, the stone of yellow tone with some russet inclusions. 3.5cm x 2.7cm x 2.2cm

\$500-\$1,000



Lot 026
十七 / 十八世纪 文房三件
SET OF THREE ARTICLES, 17TH/18TH C.

The set comprising of three articles, including two waterpots and an incised celadon box with cover. Highest 6.5cm

\$200-\$300



Lot 027
晚清 玉雕两件
SET OF TWO JADE ARTICLES, LATE QING

The set comprising of a jade ring and a carved jade rounded box with a cover. D:8cm & 3.5cm

\$200-\$300



Lot 028
清 玉鸟雕件
CHINESE JADE BIRD CARVING, QING

Carved in the form of two birds, each recumbent with the head turned back over its body and facing each other, grasping a branch in their beaks, the stone of celadon tone, the carved marks of russet color. 3.5cm x 3.5cm x 3cm

\$500-\$1,000

Lot 029

清 黄花梨素身笔筒

CHINESE HUANGHUALI BRUSHPOT, QING

The brush pot of slightly waisted cylindrical form, the wood of light brown color with dark patina. H: 16.6cm
Diam:14.7cm

\$3,000-\$4,000



029



030

Lot 030

十七/十八世纪 瘿木随形笔筒 带盖座

CHINESE BURLWOOD BRUSHPOT, 17TH/18TH C.

A tall irregular-oval form burlwood brush pot, the natural attractive wood grain with tree trunk resemblance textures and several natural crevices and knots, accompanied with a fitted Nanmu cover and Hongmu stand. Brush pot H: 15.1 cm, Total H: 21 cm

Provenance: Christie' s New York, 17 September 2008, lot 108. Arts of Chen, Taipei.; Christie's sale 11929, 17 March 2016, lot 1106.

\$6,000-\$10,000

Lot 031

康熙 青花绿龙三足折沿洗《富贵佳品》款 带盒
BLUE AND GREEN GLAZE TRIPOD PLATE, FUGUI
MARK, KANGXI PERIOD

The shallow body rising to a flat rim, all supported on three beast head feet, the body decorated with a green dragon in pursuit of a flaming ball amidst scrolling clouds, all against a dark blue ground, the base with four-character Fugui mark, accompanied with a fitted stand. H: 7cm Diam:26cm

\$15,000-\$20,000



031



Lot 032
明 黄地暗刻龙纹梅瓶 (底补洞)
YELLOW-GLAZED DRAGON MEIPING (DRILLED),
MING

The vase of finely potted baluster form rising to a short waisted neck with a straight lip, the body covered in bright yellow glaze, incised with two dragons, the unglazed foot ring reveals the buff ware, with original receipt. H:33cm

\$2,000-\$4,000



Lot 033
明 青花人物烛台
CHINESE BLUE AND WHITE CANDLESTICK HOLDER, MING

Of compressed globular body to a spreading foot, base of a shallow drip pan and a cylindrical stem, the body decorated with figures with a landscape scene. H: 32cm

\$8,000-\$12,000



Lot 034
明 双耳长方四足铜炉 带盖座
CHINESE BRONZE INCENSE BURNER AND COVER, MING

The baluster body of rectangular section, the body carved with archaic taotie patterns, all supported on four beast-head legs, the side attached with two rectangular ears, the carved wood lid with inset jade, with stone handle and accompanied with a fitted wooden stand. H:33cm without stand

\$2,000-\$3,000



Lot 035
清 哥窑双耳赏瓶
CHINESE GE-TYPE DOUBLE EAR VASE, QING

The rounded sides rising from a tall spreading foot to a tall cylindrical neck and slightly flared rim, covered in a celadon glaze with russet and black crackles. H:35.5cm

\$10,000-\$15,000



Lot 036
青釉象耳琮瓶 《大清嘉庆年制》款
CELADON GLAZE ELEPHANT EARS CONG VASE, JIAQING MARK

Robustly potted, or archaic Cong form supported on a straight foot and surmounted by a short circular neck, the rectangular body molded on opposite sides with elephant-head handles with rings, covered overall in a celadon tone, with six-character Jiaqing Mark. 29.5cm x 13cm x 13cm

\$20,000-\$30,000



Lot 037
青釉八卦纹琮瓶 《大清同治年制》款 底钻洞 带原木盒
CELADON-GLAZED CONG FORM VASE, TONGZHI MARK, DRILLED

Modeled after the archaistic Cong form, the body of square section rising from a short straight cylindrical foot to a tapering circular neck, molded with the "Eight Trigrams" to each of the four sides, covered overall in pale celadon glaze, the base with six-character Tongzhi mark drilled with a hole, accompanied with a fitted wood box. 26.5cm x 13.5cm x 13.5cm

\$10,000-\$15,000



Lot 038
晚清 白玉如意 带座
CHINESE JADE DRAGON RUYI
SCEPTRE WITH STAND, LATE
QING

The ruyi-shaped head finely carved with a dragon in pursuit of a pearl amidst scrolling clouds, the middle decorated with a bat and two mysterious creatures, the end of the curved flattened stem decorated with a Chilong, the stone of an even celadon tone, accompanied with a fitted wooden stand and a larger stand. L:32.5cm

\$15,000-\$20,000



Lot 039
茶叶末釉双耳瓶 《成化年制》款
TEA-DUST GLAZE DOUBLE-EAR
VASE, CHENGHUA MARK

Of compressed body, rising from a conical foot to a waisted neck, the narrowing shoulder flanked with two 'S' shape handles, the base with four-characters Chenghua mark. H:20cm

\$600-\$1,000



Lot 040
蓝釉赏瓶 《大清康熙年制》
款
CHINESE BLUE GLAZE BOTTLE
VASE, KANGXI MARK

Of compressed globular body, rising to a cylindrical neck to a lightly everted neck, the base with six-characters Kangxi seal. H:18cm

\$300-\$500



Lot 041
玉雕鼻烟壶一组两件
GROUP OF TWO CHINESE JADE SNUFF
BOTTLES

The group comprising of two jade carved bottle vase, one carved with Linzhi and orchid with a gem-inlaid metal stopper, the other carved with landscape on the body with a celadon tone stopper. H:6.5cm; 6.6cm

\$600-\$1,000



Lot 042
清 白玉卷云纹佩 带座
CHINESE JADE CARVED BI DISC WITH STAND, QING

The bi disc carved in low-relief with ruyi-form cloud on both sides, the stone of an even celadon tone, accompanied with a fitted wooden stand. Diam: 5.5cm

\$300-\$500



Lot 043
清 白玉小盏 连座
CHINESE WHITE JADE BOWL WITH STAND, QING

The bowl has deep rounded sides rising from a finely finished ring foot to a slightly everted rim, the well polished, semi-translucent stone is of an even tone. H:3.2cm Diam: 5.5cm

\$1,000-\$1,500



Lot 044
十九世纪 青白玉花卉玉磬
WHITE JADE FLORAL MUSICAL CHIME PLAQUE, 19TH C.

Carved in the form of a jade Qing (musical chime), each side pierced and carved in low-relief with interlaced poney blossom, the stone of a creamy russet tone. 10.5cm x 4.7cm x 0.5cm

\$1,000-\$1,500



Lot 045
清 和田碧玉翎管
CHINESE GREEN JADE HAT FINIAL, QING

Of tubular form, the jade of dark green tone suffused with emerald green streaks to the dark green background. H:7.3cm

\$300-\$500



Lot 046
宋 建窑小盏
CHINESE JIAN-TYPE BOWL, SONG

The deep conical body rising from a ring foot, applied with a black glaze with cascading russet streaks and stopping above the foot, revealing the greyish body. H: 3.5cm Diam:8.4cm

\$100-\$200



Lot 047
清 和田玉墨床
CHINESE CARVED JADE INK REST, QING

Of rectangular form with asymmetrical feet, the stone of pale celadon tone with russet inclusions. 7.2cm x 2cm x 2cm

\$300-\$500



Lot 048
清 白玉手镯
CHINESE WHITE JADE BANGLE,
QING

The cylindrical jade bangle, inner diameter approximately 53.0 mm, width approximately 12.0mm, thickness approximately 11.0mm

\$300-\$500



Lot 049
和田玉随型籽料项链
CHINESE JADE PEBBLE NECKLACE

The necklace comprising of 36 natural-shaped jade pebbles arranged according to the sizes, each end attached with five same size red stone beads. L: 68cm

\$300-\$500



Lot 050
明 螺钿插屏
CHINESE RADEN INLAID TABLE SCREEN,
MING

The rectangular panel inlaid with Raden, depicting a landscape scene with the boat, pavilion, pine trees and scholar's rock, all set within a molded wooden frame, the stand comprised of a pair of upright supports flanked by shaped spandrels. H:48.3 with stand

\$1,500-\$2,000



Lot 051
清 寿山石笔架山
CHINESE SHOUSHAN STONE BRUSH
REST, QING

Horizontally oriented, the brush rest with a contorted form resembling a scholar's rock, the surface of a dark brown tone with green and red inclusions, the base reveals the inner color of the stone. 15.9cm x 6.5cm x 4cm

\$300-\$500



Lot 052
清康熙 青花山水纹棒槌瓶
CHINESE BLUE AND WHITE ROULEAU
VASE, QING KANGXI PERIOD

The cylindrical body surmounted by a constricted neck and galleried rim, painted with pavilions set amidst gnarled pine trees and jagged cliffs, the rim and neck and shoulder painted with bands of repeated decorative patterns, the unglazed foot ring reveals the buffware. H: 20cm

\$500-\$1,000



53

Lot 053
十八世纪 饕餮纹双耳活环铜瓶
CHINESE ARCHAISTIC BRONZE VASE, 18TH C.

The compressed globular body rising from a spreading foot to a waisted neck and everted rim, cast around the exterior in low-relief with archaic patterns of taotie masks and lappets, divided by bands, the shoulder set with a pair of ring handles suspending loose rings. H: 23.5cm

\$2,000-\$2,500

Lot 054
十九世纪 玛瑙雕笔筒 / 花插
CHINESE AGATE BRUSH POT/VASE
19TH C

An agate brush pot/vase modelled as a hollow pine tree trunk, the exterior carved with blossoming prunus, Chilong, and bats flying amidst scrolling cloud, the stone of semi-translucent grey and russet tone. H:11.7cm

\$500-\$800



54

Lot 055
明 龙泉青釉大盘
CHINESE LONGQUAN CELADON CHARGER, MING

The charger potted with lobed rim, the interior with interlaced floral design on the side and blossoming poney in the middle, overall glazed in celadon color, the base with unglazed firing ring reveals the buffware. Diam: 37.5cm

\$4,000-\$5,000



55

Lot 056
十七 / 十八世纪 墨彩饰金西方人物图盘
CHINESE GRISAILLE-DECORATED EUROPEAN SUBJECT PLATE, 17TH/18TH C.

Painted en grisaille in the center with a pair of lovers underneath a canopy with the landscape at the background, the rim decorated with a gilt floral pattern, the unglazed foot ring reveals the buffware. Diam:22.5cm

\$1,500-\$2,000



56



Lot 057

清道光 墨彩香炉、墨床 一组两件

TWO RISAILLE-DECORATED PORCELAIN SCHOLAR'S OBJECTS, DAOGUANG P.

The censer of square form supported on four legs, the top of the cover pierced with holes, the body decorated with figures and flowers, the ink rest similarly decorated with figures and interlaced floral design. Censer: 4.5cm x 4.4cm x 4.4cm; Ink rest: 8.5cm x 4.5cm x 2.3cm

\$800-\$1,200



Lot 058

清 五彩大盘 (有修)

CHINESE FAMILLE-VERTE CHARGER (REPAIRED), QING

The shallow charger painted with ancient Chinese ladies in the middle within a garden scene with scholar's rock, pavilion, and plants, surrounded by a band of repeated decoration and four panels of pomegranate blossom at the rim, the foot ring reveals the buffware. Diam: 38.2cm

\$500-\$800



Lot 059

民国 大笑佛连座

FIGURE OF MAITREYA WITH STAND, REPUBLIC PERIOD

Modeled wearing open robes, holding prayer beads in his right hand and a sack in the left, the unglazed base drilled with a hole in the middle, accompanied with a fitted wooden stand. Approximately H: 26cm without stand

\$500-\$800



Lot 060

民国 竹雕人物故事香筒

CARVED BAMBOO INCENSE HOLDER, REPUBLIC P.

The incense holder of tubular form, body carved with ladies and an attendant under a pine tree and in front of a desk, the two ends accompanied with a hardwood cover. L:28.2cm Diam: 6.2cm

\$1,500-\$2,000



Lot 061

清早期 青花三足花盆

BLUE AND WHITE TRIPOD JARDINIÈRE, EARLY QING

Of circular form, the jardiniere decorated in blue and white with Chinese mysterious beast with scrolling clouds and landscape, all supported on three feet, the unglazed interior and base reveals the buffware, the base drilled with a hole in the middle. D:23.8cm H:10.5cm

\$800-\$1,200

Lot 062

十八世纪 出口粉彩人物盘

EXPORT FAMILLE-ROSE PRONK ARBOR CHARGER, C.1738-40

The interior painted with figures within a garden scene surrounded by a band of flowers and insects, the reverse with an iron-red and purple frieze under the rim. Diam: 23cm

Provenance: Christie's Chinese Export Art, New York, 18 Jan 2017, Sale 12597, Lot 410.

\$2,000-\$3,000



Lot 063

清乾隆 青花缠枝花卉纹高足杯《大清乾隆年制》

BLUE & WHITE STEM CUP, QIANLONG MARK AND PERIOD

The wide flared cup with rounded sides rising to an everted rim, supported on a hollow splayed stem with interlaced floral design, the base with six-character Qianlong mark and of period. Diam: 9.1cm H: 9.8cm

\$3,000-\$4,000



Lot 064

十七/十八世纪 鎏金铜佛像

GILT BRONZE BUDDHIST FIGURE, 17/18TH C.

Seated in lalitasana on a double lotus base, her hands in vitarkamudra, clad in a dhoti secured with an elaborate belt, adorned in various jewelry and flanked by lotus blossoms at her shoulders. H:19cm

\$5,000-\$8,000





Lot 065

明 士大夫铜坐像

BRONZE SEATING FIGURE OF DIGNITARY, MING

The bronze figure depicting a sitting figure of the dignitary, sitting on a scholar's rock, the left armrest on the stone holding a scroll in his hand, the right hand resting freely on his leg. H: 16.7cm

\$1,500-\$2,000



Lot 066

十七/十八世纪 西藏文殊菩萨

TIBET MANJUSRI BUDDHA, 17TH/18TH C.

The Buddha depicted as a sitting figure, sitting on a lotus stand. H:11.4cm

\$800-\$1,200



Lot 067

清 瓷山石形摆件

CHINESE BROWN GLAZE PORCELAIN SCHOLAR'S ROCK, QING

Naturalistically molded in the form a craggy 'rock' of irregular outline and deep undulating fissures, the porcelain a dark brown color with light russet inclusion, with a flat base. H:27cm

\$500-\$800

The Estate of Yick-Ho Wong 黄英豪 (1923-2011)

Lot 068 to Lot 083

黄英豪先生旧藏

黄英豪 (1923-2011) 先生，祖籍广东省台山，为香港著名学者、画家及收藏家，后定居加拿大。早年曾于清华大学就读经济学，嗜艺术，并拜徐悲鸿为师。迁居香港后于中文大学新亚书院修习，曾为丁衍庸弟子，并热心于艺事上资助丁公。长年累之，二人师徒书画酬唱，私交甚笃。黄氏于1960年代，在香港尖沙咀有“景云阁”画店，经营笔墨文房，古籍善本等



Lot 068

赵无极 (1921-2013) 限量版画 带框

**ZAO WOUKI (1921-2013) UNTITLED
LITHOGRAPH**

Lithograph on paper. Signed, dated and numbered 45/99 in pencil. 62.5cm x 39cm

Provenance: Chinese paintings and books from the Estate of Yick-Ho Wong 黄英豪 (1923-2011), Hong Kong and Canada.

\$4,000-\$5,000

Lot 069

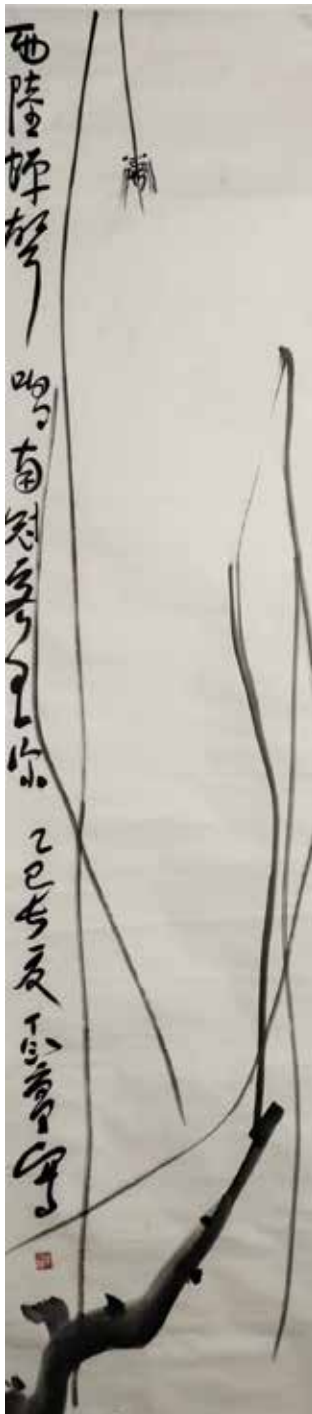
**丁衍庸 (1902-1978) 弥勒佛 水墨
纸本 镜心**

**DING YANYONG (1902-1978) MAITREYA
BUDDHA**

Depicting Maitreya Buddha, ink on paper, titled and signed by the artist with two artist's seals. 176cm x 47cm Provenance: Chinese paintings and books from the Estate of Yick-Ho Wong 黄英豪 (1923-2011), Hong Kong and Canada.

\$4,000-\$6,000





Lot 070
丁衍庸 (1902-1978)
蝉 水墨纸本 镜心
DING YANYONG (1902-1978) CICADA

Depicting cicada, ink on paper, signed by the artist with one artist's seal, 135.8cm x 33.5cm

Provenance: Chinese paintings and books from the Estate of Yick-Ho Wong 黃英豪 (1923-2011), Hong Kong and Canada.

\$2,000-\$3,000



Lot 071
丁衍庸 (1902-1978)
葡萄小鸟 水墨纸本 镜心
DING YANYONG (1902-1978) GRAPES

Depicting grapes and a bird, ink on paper signed by the artist with one seal. 135.5cm x 33.5cm

Provenance: Chinese paintings and books from the Estate of Yick-Ho Wong 黃英豪 (1923-2011), Hong Kong and Canada.

\$2,000-\$3,000



Lot 072
丁衍庸 (1902-1978)
无量寿佛 水墨纸本 镜心
DING YANYONG (1902-1978) AMITAYUS BUDDHA

Depicting amitayus buddha and peach, ink on paper, signed by the artist with one seal. 136cm x 33.5cm

Provenance: Chinese paintings and books from the Estate of Yick-Ho Wong 黃英豪 (1923-2011), Hong Kong and Canada.

\$3,000-\$4,000



Lot 073
丁衍庸 (1902-1978) 翠鸟荷花 设色纸本 镜心
DING YANYONG (1902-1978) KINGFISHERS AND LOTUS BLOSSOM 1965

Depicting lotus blossom with bird, color, and ink on paper, signed by the artist with one seal. 135.7cm x 67.5

Provenance: Chinese paintings and books from the Estate of Yick-Ho Wong 黃英豪 (1923-2011), Hong Kong and Canada.

\$4,000-\$6,000



Lot 074
丁衍庸 (1902-1978) 荷塘鸟蛙 设色纸本 镜心
DING YANYONG (1902-1978) KINGFISHERS AND FROGS 1965

Depicting lotus blossom, birds and frogs, color and ink on paper, signed by the artist with one seal. 135cm x 67.2cm

Provenance: Chinese paintings and books from the Estate of Yick-Ho Wong 黃英豪 (1923-2011), Hong Kong and Canada.

\$4,000-\$6,000



Lot 075

丁衍庸 (1902-1978) 荷塘水禽 水墨纸本 镜心
DING YANYONG (1902-1978) DUCKLINGS 1965

Depicting lotus blossom and birds, ink on paper, signed by the artists with one artist's seal. 97cm x 179.5cm

Provenance: Chinese paintings and books from the Estate of Yick-Ho Wong 黄英豪 (1923-2011), Hong Kong and Canada.

\$4,000-\$6,000



Lot 076

丁衍庸 (1902-1978) 花鸟 水墨纸本 镜心
DING YANYONG (1902-1978) ANGRY BIRD

Depicting cicada and birds, ink on paper, signed by the artist with one seal. 94cm x 175cm

Provenance: Chinese paintings and books from the Estate of Yick-Ho Wong 黄英豪 (1923-2011), Hong Kong and Canada.

\$4,000-\$6,000



Lot 077
艺术类书籍一组
GROUP OF ART BOOKS

The group comprising of numbers of art books.

Provenance: Chinese paintings and books from the Estate of Yick-Ho Wong (1923-2011), Hong Kong and Canada.

\$200-\$400



Lot 078
参考类书籍一组
GROUP OF REFERENCE BOOKS

The group comprising of numbers of reference books including the dictionary.

Provenance: Chinese paintings and books from the Estate of Yick-Ho Wong (1923-2011), Hong Kong and Canada.

\$200-\$400



Lot 079
教案类书籍一组
GROUP OF SCHOOL BOOKS

The group comprising of numbers of school books.

Provenance: Chinese Paintings and Reference Books from the Estate of Wong Yik-Ho(1923-2011), Hong Kong

\$200-\$400



Lot 080
字帖一组
GROUP OF COPYBOOKS

The group comprising of numbers of copybooks for calligraphy.

Provenance: Chinese Paintings and Reference Books from the Estate of Wong Yik-Ho(1923-2011), Hong Kong

\$200-\$400



Lot 081
老书本一组
GROUP OF BOOKS

The group comprising of numbers of aged books

Provenance: Chinese paintings and books from the Estate of Yick-Ho Wong (1923-2011), Hong Kong and Canada.

\$200-\$400



Lot 082
老书本一组
GROUP OF BOOKS

The group comprising of numbers of aged books

Provenance: Chinese Paintings and Reference Books from the Estate of Wong Yik-Ho (1923-2011), Hong Kong

\$200-\$400



Lot 083
老拓片一组
GROUP OF STONE RUBBING ALBUMS

The group comprising of numbers of stone rubbing albums and copybooks for calligraphy.

Provenance: Chinese paintings and books from the Estate of Yick-Ho Wong (1923-2011), Hong Kong and Canada.

\$600-\$800



Lot 084
59年精装版 上海博物馆藏画 带盒
SHANGHAI MUSEUM CANGHUA WITH BOX, 1959

Recording the paintings in the Shanghai museum collection, edited in 1959. size: 54cm x 40cm x 4.5cm

\$800-\$1,200



Lot 085
红釉梅瓶 《大清乾隆年制》款
OX BLOOD-GLAZED MEIPING VASE,
QIANLONG MARK

The vase potted with a tapering body sweeping up to a broad rounded shoulder, surmounted by a short waisted neck and lipped rim, covered overall with a rich deep red glaze, the base with six-character Qianlong mark. H:26.5cm

\$3,000-\$4,000



Lot 086
晚清 粉彩竹桃诗文盘
FAMILLE ROSE PEACH PLATE , LATE QING

The shallow plate painted with peach, bamboo, lingzhi, and calligraphy in the interior, the base with a red mark. the unglazed foot ring reveals the buffware. Diam: 16.7cm

\$200-\$300



Lot 087
民国 料器赏瓶
CHINESE PEKING
GLASS VASE
REPUBLIC P.

The vase of tapering form with a long straight neck to an everted rim, the body covered with the rich reddish-orange tone with dark brown marks. H:22cm

\$300-\$500



Lot 088
清 太湖赏石连座
TAIHU SCHOLAR'S ROCK WITH STAND, QING

Vertically oriented, the stone of light brown to a russet color, pierced with large circular openings creating crevasses and overhangs, accompanied with a fitted wooden stand. H:28cm without stand

\$1,500-\$2,000



Lot 089
清康熙 黑漆嵌螺钿托盘对 如岗如陵，如南山之寿楷书款
PAIR OF MOTHER-OF-PEARL INLAID BLACK LACQUER TRAYS
QING KANGXI PERIOD

Each plate of square form, the interior inlaid in gold and mother-of-pearl depicting human figures within different garden and landscape scene, the base with a poetic inscription, 10.5cm x 10.5cm x 0.7cm each

\$1,000-\$1,500



Lot 090
十九世纪 银镂空双龙耳环盖盒
EXPORT SILVER RETICULATED BOX AND COVER, 19TH C.

The reticulated body pierced with different decorations, the body flanked with two dragon-head shaped handles with loose rings, the cover with a lion dog surmount. H:17cm, Diam: 23cm, Weight 800g.

\$1,500-\$2,000



Lot 091
元 暗刻鸳鸯莲纹磁州窑罐
CHINESE CIZHOU SGRAFFITO JAR, YUAN

The jar of cylindrical rounded form, the body incised with a mandarin duck on a pond amongst waves and lotuses, the exterior glazed white, the interior and base unglazed and reveals the buff ware, accompanied with a fitted box. H:10.5cm, Dia: 12 cm.

Provenance: Jan Van Beers Oriental Art label

\$1,500-\$2,000



Lot 092
清 窑变釉仿生象对
PAIR OF CHINESE FLAMBE GLAZE
ELEPHANTS, QING

Finely potted as a pair of elephants, the body glazed with a red and blue tone, the unglazed foot reveals the buffware. H: 19.5 each. W: 24.5cm

\$5,000-\$10,000

Lot 093
三彩虎皮釉碗 《奇石宝鼎之珍》款
CHINESE SANCAI GLAZED BOWL, QISHI MARK

The bowl of conical form rising from a straight foot, the whole body decorated with green, yellow purple and white blocks, the base with six-characters mark. Diam: 19.5cm H:7.7cm

\$1,500-\$2,000



Lot 094
黄釉暗刻大碗 《大清康熙年制》款
CHINESE YELLOW GLAZE BOWL, KANGXI MARK

The bowl of globular form with an everted rim, the exterior decorated with prunus, chrysanthemum, poney, and lotus blossom, the interior decorated with a band of interlaced floral design on the rim, the middle with a shou character surrounded by five bats, the base with six-characters Kangxi mark. Diam: 21.7cm H: 10.7cm

\$1,500-\$2,000



Lot 095
黄地九龙碗 《大清道光年制》款
YELLOW-GROUND GREEN-ENAMELLED BOWL, DAOGUANG
MARK

Of globular form, the body decorated with green dragon against a bright yellow background, the interior and the base glazed white, the base with six-characters Daoguang mark. H: 6.9cm D: 15.2cm

\$5,000-\$6,000

Lot 096

粉彩花卉碗

CHINESE FAMILLE-ROSE FLORAL BOWL

Of globular body rising from a straight foot to an everted rim, the exterior decorated with chrysanthemum, poney, figures on lake and scholar's rock, the interior with a band of flower decoration at the rim. H:6.8cm D:15.8cm

\$1,500-\$2,000



Lot 097

十七世纪 哥窑叶子水洗 带盒

CHINESE GE-TYPE BRUSH WASHER, WITH BOX, 17TH C.

The brush wash of leaf form, the body covered with russet crackles against a celadon ground, the unglazed foot ring reveals the buffware. 16.8cm x 7.6cm x 2cm

\$3,000-\$4,000



Lot 098

晚清 紫砂水盂

CHINESE ZISHA 'BAMBOO' WATERPOT, LATE QING

The waterpot of beehive form, incised with characters and bamboo on the body, the base with three feet and incised with a seal in the middle. H: 3.8cm Diam: 8.1cm

\$300-\$500



Lot 099

民国 粉彩花瓶一对 《馆藏珍品》款 带盒

PAIR OF FAMILLE-ROSE IRON RED VASES, GUANCANG MARK, REPUBLIC. P.

Each of octagonal form rising from a straight foot to a waisted neck and an everted mouth, the body decorated with famille rose and iron red with a bird, pony, and prunus blossom, the base with a four-character seal, accompanied with a fitted box. H: 20cm each

\$5,000-\$7,000

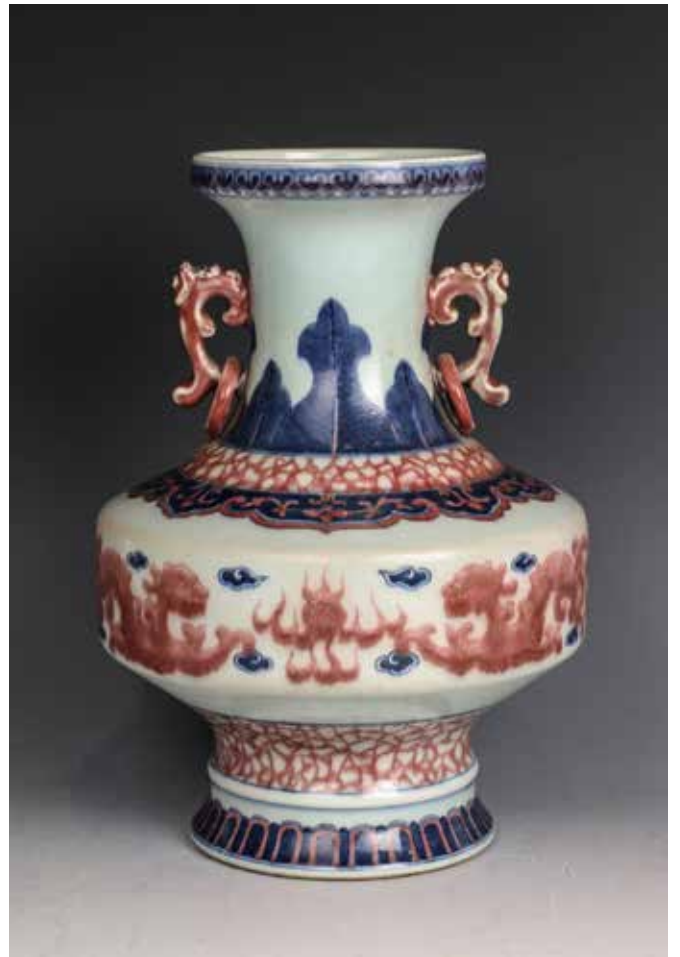
Lot 100

十八世纪 青花釉里红双耳赏瓶

UNDERGLAZE BLUE AND COPPER-RED VASE, 18TH C.

Of compressed body rising from a conical foot to a waisted neck and straight mouth, two ears flanked on the side of the neck, the body decorated with two dragons in pursuit of a flaming ball amidst clouds, accompanied with a fitted box. H: 30.8cm

\$3,000-\$4,000



Lot 101

清乾隆 青花缠枝花卉纹盘 《大清乾隆年制》

BLUE AND WHITE FLORAL PLATE, QIANLONG MARK & PERIOD

The plate decorated with a round interlaced floral design surrounded with a band of floral design, the base with Qianlong mark and of period. Diam: 15.1cm H: 3.1cm

\$3,000-\$4,000



Lot 102

溥佐 (1918-2001) 书法对联 设色洒金纸本 连框
AISIN GIORO PU ZUO (1918-2001), CALLIGRAPHY COUPLET

Calligraphy couplet, signed Aisin Gioro Pu Zuo, with three artist's seals, ink on gold-flecked paper, pair of hanging scrolls, framed. 127cm x 28cm

Provenance: Estate of Aisin Gioro family descendants

\$5,000-\$8,000



Lot 103

黄均 (1914-2011) 竹兰 设色纸本 连框
HUANG JUN (1914-2011) BAMBOO AND ORCHID

Depicting orchid and bamboo with scholar's rock and river, titled and signed Huang Jun, with three artist's seals, ink and color on paper, framed. 66.5cm x 67.5cm

Provenance: Estate of Aisin Gioro family descendants

\$3,000-\$5,000



Lot 104

爱新觉罗溥佐 (1918-2001) 书法 镜心连框
AISIN GIORO PUZUO (1918-2001) CALLIGRAPHY

Calligraphy, ink on paper, signed by the artist with one seal, framed. 43.5cm 85cm

Provenance: Estate of Aisin Gioro family descendants

\$500-\$1,000

-28-



Lot 105

爱新觉罗毓响 (1949-) 书法 镜心连框
AISIN GIORO YUNXUN (1949-) CALLIGRAPHY

Calligraphy, ink on paper, signed by the artist with two seals, framed. 29cm x 126cm

Provenance: Estate of Aisin Gioro family descendants

\$500-\$1,000



Lot 106
晚清 三足龙泉花盆 带盒
CHINESE TRIPOD LONGQUAN JARDINIERE, WITH BOX, LATE QING

Of conical U-form rising to an everted rim, supported on three beast-head feet, the body decorated with rounded sea waves and Pheonix decoration, all against a celadon ground, the base drilled with a hole, the unglazed interior and base reveals the buffware. H:24cm D:29cm

\$1,000-\$2,000



Lot 107
晚清 花边龙泉圆花盆一对 带盒
PAIR OF CHINESE LOBED LONGQUAN JARDINIERES, WITH BOX, LATE QING

Each potted of deep U-form rising to an everted lobed rim, all supported on three pointed legs, the body decorated with a white archaistic pattern with a band of blue interlaced floral design, all against a celadon green ground, the unglazed base and interior reveal the buff ware. H:24cm D:30.5cm

\$2,000-\$3,000

Lot 108
茶叶末釉狮耳赏瓶 《大清乾隆年制》款
CHINESE TEA DUST GLAZE DOUBLE EAR VASE, QIANLONG MARK

Of globular body with straight foot, rising to a long waisted neck to an everted rim, the body with two lion-head ears attached with a ring, body covered with tea-dust glaze, the base with six-characters Qianlong mark. H:25.5cm

\$500-\$800





Lot 109
窑变釉龙头笔洗
CHINESE FLAMBE-GLAZED DRAGON HEAD BRUSH WASHER

Of compressed form with four lobes, the top carved with a dragon resting on the brush washer, the body glazed in purple and celadon tone, with crackles, the base glazed brown. 12.2cm x 10.2cm x 3cm

\$200-\$300



Lot 110
白描人物故事鱼缸
CHINESE WHITE GLAZED FISHBOWL

Potted of deep U-shape, the body painted with figures within a garden scene and titled, all against a creamy white glazed ground, the unglazed foot ring reveals the buffware, the base with two blue circles. H: 22cm

\$2,000-\$3,000



Lot 111
清 小海兽一对
PAIR OF SMALL PORCELAIN SEA BEASTS, QING

Each modeled with a sea beast sitting straight on a bed of blue sea waves, the beast one of dark pink body and one of pink and white body, the base drilled with a small hole and the unglazed base reveals the buffware. H: 6cm & 6.3cm W: 5cm each.

\$100-\$200



Lot 112
清 大海兽一对
PAIR OF BIG PORCELAIN SEA BEASTS, QING

Each modeled with a sea beast in light purple and green resting on a dark green stone above sea waves, each beast with big ears and long tails, the unglazed base reveals the buffware. H: 11cm & 10.7cm

\$100-\$200



Lot 113
核桃雕一对
PAIR OF CARVED WALNUT CARVINGS

Two pieces of walnuts, carved with figures with prunus, the walnut has been well polished. 4cm x 3.5cm x 4cm

\$100-\$200



Lot 114
镶银青花瓶 《大清乾隆年制》款
BLUE AND WHITE SILVER-MOUNTED
VASE, QIANLONG MARK

Of globular body rising from a spreading foot to a waisted neck, the body decorated with peach trees in blue and white, the lobed neck decorated with a repeated pattern, the base glazed white with six-character Qianlong mark. H: 30.5cm

\$1,000-\$1,500



Lot 115
二十世纪 银砂双格壶 《陈法生制》
款
GREEN ZISHA TEAPOT, CHEN
FASHENG MARK, 20 TH C.

The teapot of square form, with a square form handle and a pointed square mouth, covered with green zisha, the teapot is separated into two parts with two covers, written with 'Fu' and 'Shou', the base with four-character Chen Fasheng mark, accompanied with a fitted box. 17.5cm x 10cm x 6.5cm

\$300-\$500



Lot 116
晚清 紫砂壶 《铁画轩》款
CHINESE ZISHA TEAPOT, TIE
HUAXUAN MARK, LATE QING

Of square form, with a bamboo form handle and a curved bamboo-form mouth, the body decorated with landscape scene including pine trees, river, and pavilion, the reverse incised with calligraphy, the fitted cover with a bamboo-like handle, the base with four-characters Tie Huaxuan mark, accompanied with a fitted box. 13.2cm x 20.5cm x 9cm

\$200-\$300



Lot 117
瘿木茶盘
CHINESE BURLWOOD TEA TRAY

The tea tray carved along the natural form, mounted with a metal leaking mouth, the wood of dark russet tone. 76cm x 41cm x 11cm

\$300-\$500



Lot 118
晚清 青花、粉彩菱形碟一组
SET OF TWO SAUCERS, LATE QING

The four-lobed shallow saucer of overall diamond shape, the interior painted with interlaced floral design, the reverse decorated with four blue marks on each lobed and the base with a blue character, the unglazed foot ring reveals the buffware. 7.3cm x 6cm x 1cm; The four-lobed shallow saucers of overall diamond shape, the interior painted with a colorful pheonix amidst flaming clouds, surrounded with a band of key-fret pattern, the unglazed base reveals the buffware. 7.5cm x 5.7cm x 1.2cm

\$300-\$500



Lot 119
炉均釉蝠鼠水洗
ROBIN'S EGG GLAZED BRUSH
WASHER

Obustly potted with a flat shallow form, well conforming to the shape of a Bat at the mouth rim, the body brightly covered overall with an opaque turquoise-blue glaze type suffused with a finely mottled purplish-blue, the unglazed foot ring reveals the buffware. 13cm x 9.6cm x 3.5cm

\$300-\$500



Lot 120
窑变釉小梅瓶
CHINESE FLAMBE-GLAZED MEI VASE

Of baluster form, rising from a spreading foot to a slim-waisted neck and an everted rim, the body decorated with red, blue and purple glaze, the rim with a ring of white glaze, the unglazed base reveals the buffware. H:8.5cm

\$100-\$200



Lot 121
绿釉龙凤纹缸 《大清雍正年制》款
CHINESE GREEN GLAZE FISHBOWL, YONGZHENG MARK

Of globular form to a tapering foot, the body glazed green, potted with dragons in pursuit of a flaming ball amidst scrolling clouds above sea waves, the base with six-character Yongzheng mark. H:27.5cm

\$2,000-\$3,000



Lot 122
石湾庭仔摆件 带底座
CHINESE SHIWAN BOATS WITH STAND

Six porcelain-made boats, depicting in different colors and sizes including three bigger one and three smaller one, the boats attached to a natural hardstone base, accompanied with a fitted wooden stand. Base: 13.5cm x 10cm

\$100-\$200



Lot 123
清 灵璧笔架山子连座
LINGBI BRUSHREST WITH STAND, QING

Horizontally oriented, the stone of dark grey tone, accompanied with a fitted wooden stand. W: 37.5cm H: 11.5cm without stand

\$1,000-\$1,500



Lot 124
黄杨木骨雕香筒 带盖
CHINESE BOXWOOD INCENSE HOLDER WITH COVER

Of cylindrical form, the body carved with figures playing chess beneath a pine tree and a scholar with an attendant within a landscape scene with mountain and trees, the based and the cover of carved with bone. H:12.5cm D:5.5cm

\$200-\$400



Lot 125
硬木嵌云石对屏
PAIR OF CHINESE MARBLE-INLAID SCREENS

The creamy white marbles figured with green and grey with different color markings, inset in a wood frame carved with the flower at the side. 28.5cm x 106cm x 3cm each

\$500-\$1,000



Lot 127
晚清 八边花鸟纹竹盖盒
CHINESE OCTANGONAL BAMBOO-VENEER BOX, LATE QING

The box of octagonal form, the body decorated with flowers scholar's rock, and archaic pattern in low relief, the material of light yellow tone bamboo. Dia: 23cm, H:9.9cm

\$1,000-\$1,500



Lot 126
清或更早 铜鎏金五姓财神像 带盒
GILT-BRONZE JAMBHALA WITH BOX, QING OR EARLIER

Depicting a gilt-bronze figure Jambhala, the god of wealth, depicting cross legs, with each hand holding offerings, accompanied by a box. H:7cm, Weight:7g.

\$1,000-\$1,500



Lot 128
十九世纪 酸枝木展示柜
CHINESE SUANZHI DISPLAY CABINET 19TH C.

Each rectangular frame enclosing a glass panel, the hinged door opening to a wood-backed series of tiered shelves above two drawers. 34.5cm x 55.5cm x 18cm

\$500-\$800



Lot 129
晚清 小四方笔筒 茶杯
GROUP OF BRUSH POT AND TEACUP, LATE QING

Comprising of a rectangular form brush pot and a teacup, the brush pot decorated with figures and inscriptions with seals, the base with four-characters Tongzhi seal; the cup decorated with green dragons in pursuit of a flaming ball. H: 8.4cm; 6.5cm

\$200-\$400



Lot 130
民国 青玉璧
CELADON JADE BI DISC, REPUBLIC PERIOD

One side carved with the 'grain' pattern, the reverse carved with scrolling pattern, the stone of celadon tone with russet inclusion, the top carved with a beast with fire coming out from its mouth. 7cm x 9.3cm x 0.7cm

\$200-\$400



Lot 131
清 木雕挂件
WOOD CARVED HANGING SCREEN, QING

The wood carved in high and low relief and pierced in depicting an elder scholar with his attendant, within a garden scene with pine trees and pavilion. 18.9cm x 24.5cm x 2.9cm

\$200-\$400



Lot 132
鼻烟壶一对 《若深珍藏》款
PAIR OF SNUFF BOTTLES, RUOSHEN MARK

Comprising of two snuff bottle, both of cylindrical form, the body decorated with figures in blue, white and iron red, the base with a leaf and four-character Ruoshen mark. H: 9cm each

\$300-\$500



Lot 133
鼻烟壶一对 《乾隆年制》《珍玩》款 带盖
PAIR OF SNUFF BOTTLES, QIANLONG & ZHENWAN MARK

Comprising of two snuff bottles, one of globular form and the other of gourd form, one decorated with figures in blue, white and iron red, the other decorated with blue flowers, the base with four-characters Qianlong mark and two-characters Zhenwan mark. H: 8cm; 7.2cm

\$300-\$500

Lot 134

民国 金鱼大花盆对 《慎德堂制》款

PAIR OF FAMILLE-ROSE JARDINIERES, SHENGDETANG MARK REPUBLIC P.

Comprising of two jardinières. of conical rectangular form with a flared rim supporting on four bracket feet, the body decorated with red gold-fish and green seaweed, the base drilled with a hole surrounded by four-character Shengdetang mark. 31.5cm x 22.5cm x 19cm

\$1,000-\$1,500



Lot 135

青玉雕饕餮纹香炉带盖 带木座

PALE CELADON JADE CENSER WITH COVER AND STAND

The censer of rectangular form supported on a straight foot, the body decorated with archaistic patterns, the side flanked with twin Chilong handles, accompanied with a fitted wooden stand and cover with a jade finial. H:18.5cm with stand

\$5,000-\$10,000



Lot 136
白玉“笔杆”对
PAIR OF CHINESE WHITE JADE BRUSH HANDLES

Comprising of two jade brush handles, of cylindrical form, the body decorated with bands carved in high-relief, the stone of celadon tone with russet inclusions. L: 18.5cm & 16.5cm

\$200-\$300



Lot 137
白玉“玉堂富贵”牌
CHINESE WHITE JADE 'BEGONIA' PLAQUE

Of rectangular form. finely carved in low-relief to one side with begonia blossom and the reverse with four characters Yu Tang Fu Gui mark, the stone of russet-celadon tone. 7cm x 4.5cm x 0.5cm

\$200-\$300



Lot 138
白玉童子小牌
CHINESE MINATURE WHITE JADE 'BOY' PLAQUE

Carved with a boy and a bat on one side in low-relief and the reverse with character, under a scrolling cloud, the stone of celadon tone with russet inclusions. 4.7cm x 3cm x 0.4cm

\$200-\$300



Lot 139
白玉花鸟福寿牌
CHINESE WHITE JADE 'FLOWER AND BIRD' PLAQUE

Carved with lotus blossom and bird on one side in low-relief and the reverse with character mark, under a scrolling cloud, the stone of celadon tone. 6.3cm x 4cm

\$300-\$500



Lot 140
白玉瓜形把件
CHINESE WHITE JADE DOUBLE GOURD CARVING

Carved as a double gourd with flower and wines, the stone of white tone with russet inclusions. 3.5cm x 6.5cm x 2cm

\$300-\$500



Lot 141

白玉龙带钩

CHINESE WHITE JADE DRAGON BELT HOOK

Worked and reticulated with a ferocious dragon head terminal facing an undercut Chilong clambering on the curved shaft, the reverse with a circular knob, the stone of an even white color. 10cm x 3cm x 2.2cm

\$300-\$500



Lot 142

青白玉磬 带木座

CHINESE CELADON JADE PLAQUE WITH WOOD STAND

The jade carved in the form of a heart shape, each side carved with a shou-character in the middle with scrolling sea waves, the stone of celadon tone with darker inclusions, accompanied with a wooden stand. H:24.5 with stand

\$500-\$800



Lot 143

墨玉雕鸳鸯形盖盒

CHINESE JADE MADARIN DUCK-FORM BOX AND COVER

Skillfully modeled with the madarin duck's head turned towards the back and wings neatly stacked, the cover well rendered in the form of its upper torso, the well-fitted box worked as its lower body, and the base carved with duck web. 17cm x 9cm x 7cm

\$200-\$400



Lot 144

十六 / 十七世纪 绿釉花卉纹执壶

CHINESE GREEN GLAZE EWER, 16/17 TH C.

The ovoid form body rising from a lightly spreading foot to a tall trumpet neck, set at the shoulder with a tall curved spout and to the other side with a tall strap handle, the body covered with green color glaze incised with flower decorations. H: 25.5cm

\$300-\$500



Lot 145

晚清 粉彩人物书法赏瓶 带座

FAMILLE-ROSE FIGURE SQUARE VASE WITH STAND, LATE QING

The slightly tapering body of square section, the body decorated with lady figures and calligraphy, the body flanked with lion-head ears with a ring, accompanied with a fitted wooden stand. H:57.8cm

\$2,000-\$3,000



Lot 146

民国 铜胎画珐琅长颈瓶

CHINESE CLOISSONNE ENAMEL VASE, REPUBLIC P.

Of globular body to an elongate waisted neck to a straight rim, supported on a cylindrical foot, the body decorated with repeated fish-scale pattern and bands of decorations. H: 24cm

\$500-\$800



Lot 147

清 三屉方提盒

CHINESE HARDWOOD THREE-DRAWERS BOX, QING

The box of rectangular section, with three drawers within, the top attached with a bronze handle, the wood of brown tone, 9.5cm x 10.2cm x 11.4cm

\$300-\$500



Lot 148
铜鎏金羊镇纸
CHINESE GILT-BRONZE GOAT PAPERWEIGHT

Lively depicting a recumbent goat with head slightly turned to the right, the body decorated with Linzhi. L:8cm

\$600-\$800



Lot 149
明 龙泉三足炉
CHINESE GE-TYPE CRACKLE TRIPOD CENSER, MING

Heavily potted and raised on three mark-and-paw feet, the shallow rounded sides carved with 'Eight Trigrams', between bands of applied knobs encircling the incurved rim and base, covered with green glaze with russet crackles. H: 11.7cm

\$800-\$1,200



Lot 149A
明 青瓷童子拜观音像
CHINESE CELADON GLAZE GUANYIN FIGURE, MING

Depicting Guanyin seated on a rockwork base with a vase and bird on each side, with a child in the front. H:24.5cm

\$3,000-\$5,000



Lot 150
白玉钟形佩
BELL-SHAPE WHITE JADE PLAQUE

The jade finely carved in the form of a bell, the top carved with two recumbent mythical beasts, the side flanked with two beasts, and the body of the bell decorated with repeated pattern and beasts. 8.5cm x 6.5cm x 0.6cm

\$1,000-\$1,500



Lot 151
白玉鹅形佩
BELL-SHAPE WHITE JADE PLAQUE

Finely carved as a goose with its head turned to the back, the body and feet decorated with archaic pattern, and grasping a lotus blossom in its mouth, the stone of celadon tone with russet inclusions. 7.6cm x 5.8cm x 1.4cm

\$2,000-\$2,500



Lot 152
白玉圣僧把件
WHITE JADE MONK CARVING

Carved with a figure wearing long robe, hands on waist, accompanied with pierced scrolling clouds and sea waves, the stone of celadon tone with russet and dark-brown inclusions. 5.8cm x 8.8cm x 1.8cm

\$800-\$1,200



Lot 153
白玉瑞兽叼子把件
WHITE JADE MYTHICAL BEAST CARVING

Fluidly carved, the beast laying with its legs tucked underneath the arched body, the head turned to the right, grasping a smaller animal in its mouth, the stone of an celadon tone with russet inclusions. 5.5cm x 4.5cm x 3cm

\$800-\$1,200



Lot 154
白玉鸟叼灵芝把件
WHITE JADE BIRD AND LINGZHI CARVING

Carved with a flower and a phoenix grasping a sinuous spring of lingzhi in its mouth, the stone of an even celadon tone with some small russet inclusions. 5.6cm x 3.5cm x 1.5cm

\$1,500-\$2,000



Lot 155
白玉带皮瑞兽灵芝
WHITE JADE MYTHICAL BEAST CARVING

Finely carved as a recumbent mythical beast with the head turned to the back grasping a sinuous spring of lingzhi in its mouth, the stone of light celadon tone with russet inclusions. 5.5cm x 3cm x 3.5cm

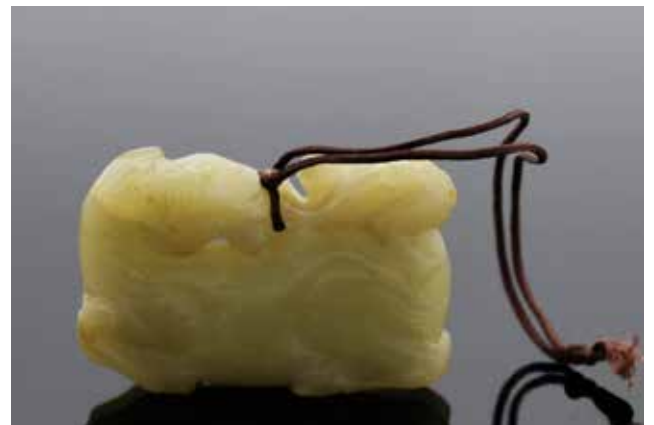
\$600-\$1,000



Lot 156
青玉神兽摆件
CELADON JADE MYTHICAL BEAST CARVING

Depicting a mythical beast grasping a Xiuqiu in its mouth with his head turned to the left, the stone of an even green tone. 6.5cm x 4.6cm x 2.6cm

\$1,000-\$1,500



Lot 157
玉雕‘马上封侯’挂件
JADE HORSE AND MONKEY PENDANT

The jade finely carved as a recumbent horse, with head turned to the back watching the monkey on his back, the stone of russet tone. 5cm x 3.3cm x 1cm

\$300-\$500



Lot 158
玉佛坐像
JADE SEATING BUDDHA FIGRUE

The jade carved as a sitting Buddha, with the legs crossed and seated on a lotus base, the stone of creamy white tone with some russet inclusions. 5.9cm x 3cm x 1.2cm

\$500-\$1,000



Lot 159
白玉人物书法牌《子冈》款
CHINESE JADE 'FIGURAL' PLAQUE, SIGNED ZIGANG

One face carved with four figures within a landscape scene with pavilion, pine tree, and river, the reverse with an inscription and signed Zigang, all below a pair of Kui dragon. 6cm x 4cm x 1.2cm

\$1,500-\$2,500



Lot 0160
白玉神仙书法牌《子冈》款
CHINESE JADE 'IMMORTALS' PLAQUE, SIGNED ZIGANG

One face carved with three immortal figures rising on clouds, the reverse with an inscription and signed Zigang, all below ground of scrolling clouds. 4cm x 6cm x 0.8cm

\$1,500-\$2,500



Lot 161
青白玉僧面挂件
CELADON JADE MONK FACE PENDANT

Finely carved as a monk, with a big face and open mouth, the stone of an even green tone. 3.6cm x 3cm x 1.1cm

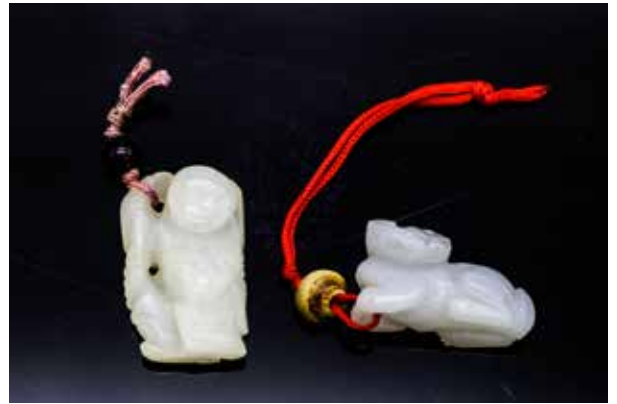
\$500-\$1,000



Lot 162
白玉百岁牌
WHITE JADE 'HUNDRED YEARS' PLAQUE

One face carved in low-relief depicting a beast with the right paw on a ball, the reverse incised with two characters. 5.5cm x 3.6cm x 0.4cm

\$200-\$400



Lot 163
白玉小挂件两件
GROUP OF TWO WHITE JADE PENDANTS

The group comprising of two miniature jade carving including a recumbent beast and a boy, one of celadon tone and one of creamy white tone. L: 2.7cm; 2.5cm

\$500-\$600



Lot 164
白玉蛹雕件
WHITE JADE PUPA CARVING

The group comprising of two jade carved insects, each of celadon tone with brown inclusions. L: 6.5cm; 5.6cm

\$3,000-\$5,000



Lot 165
民国 寿山石人物雕件连座
SHOU SHAN STONE FIGURAL CARVING WITH STAND, REPUBLIC P.

Finely carved as a figure wearing a loose robe, sitting against a beast with beads in front of his chest, the stone of yellow tone, accompanied with a fitted stand. H: 6.6cm without the stand.

\$2,000-\$3,000



Lot 166

明末清初 黄花梨素身笔筒

CHINESE HUANGHUALI BRUSHPOT, 16/17TH C.

Of cylindrical form, the thick walls rising from a flat base to a gently flared rim. patinated to a yellowish brown color highlight with dark streaks. Diam: 15cm H: 16.6cm

\$2,000-\$3,000



Lot 168

晚清 紫砂壶 《铁画轩》款 带盒

ZISHA TEAPOT. TIEHUAXUAN MARK, LATE QING

The teapot of compressed globular form, with a conical spout and a circular handle, the interior of the cover and the base with seals, accompanied with a fitted box. H:7.5cm L: 18cm

\$1,500-\$2,000



Lot 167

清 笔架山赏石连座

SCHOLAR'S ROCK BRUSHREST WITH STAND QING

Horizontally oriented, the stone of creamy russet tone, accompanied with a fitted wooden stand. H:7.5 without stand

\$1,000-\$1,500



Lot 169

铜鎏金佛像

GILT-BRONZE BUDDHA FIGURE

Depicting a seated Buddha figure, seated in Vajraparyankasana, both arms raised before the chest with hands held in Dharmachakra mudra, wearing a Sanghati draped over one shoulder, with a serene face and downcast eyes. H: 11.8cm

\$1,000-\$1,500

Estate of General Tsai Tingkai's Family

LOT 170-197

蔡廷锴将军家族珍藏



蔡廷锴 (Tsai Tingkai)，字贤初，(1892年4月15日-1968年4月25)，陆军上将军衔。中国近代史上一位具有崇高爱国主义精神的抗日民族英雄、海内外享有极高声誉的名将。出身贫民家庭，十八岁从军，曾参加同盟会，随孙中山南征北战，屡立战功，32年日军发动淞沪战役，蔡廷锴将军与蒋光鼐将军率领十九路军将士奋起抵抗，重创日军，打击了侵略者的嚣张气焰。威震中外，是中国近代抗击侵略者的出色战例，大长了中华民族的志气。后率师入闽，与李济深等发动“福建事变”，号召联共反蒋抗日，事后游历欧美，受到海内外华侨的隆重欢迎，声誉遍于全球。

蔡与李济深、何香凝、等于46年3月在广州正式组织“中国国民党民主促进会”。

新中国成立后，蔡廷锴先后当选为中央人民政府委员、全国政协常委、全国人大常委，全国政协副主席、国防委员会副主席，同时，兼任国家体委副主任及中国民革副主席。

Lot 170

青天白日勋章 (表彰淞沪抗战，1932年6月受勋，编号61)

ORDER OF BLUE SKY AND WHITE SUN

Created in 1929, it is awarded for "outstanding contributions to national security under foreign invasion" and is second only to the Order of National Glory. The middle design with a blue sky and a white sun symbol of the Republic of China and the Kuomintang. Diam: 6cm approx. 1.5oz
Awarded to General Tsai Tingkai for the Shanghai War of 1932 as No. 61.

Provenance: From the estate of General Tsai Tingkai (1892-1968), In 1930, he served as the general of the 19th Route Army and the commander of Battle of Shanghai.

青天白日勋章颁授对象是保家卫国、抵御外侮的有功将领，系民国最重要的勋章。从民国至2013年共有两百一十位高级将领获颁青天白日勋章，第七位获得者为蒋中正，第八位为蒋光鼐，第九位即是蔡廷锴将军，因为历史等等原因，除各大博物馆、政府收藏，能见到的非常有限。



\$5,000-\$8,000



Lot 171
二等宝鼎新军勋章 (表彰中原大战)
ORDER OF THE PRECIOUS TRIPOD MEDAL WITH GRAND CORDON

Created on 15 May 1929 for significant contributions to national security. The order with the central design of a tripod surrounded by golden rays. Diam: 5.5cm approx. 1.4oz Awarded to General Tsai Tingkai for the Central Plains War of 1930. 1930年5月中原大战立下战功获授二等宝鼎勋章。

Provenance: From the estate of General TsaiTingkai (1892-1968) , In 1930, he served as the general of the 19th Route Army and the commander of Battle of Shanghai.

\$5,000-\$8,000



Lot 172
国民革命军誓师勋章
NATIONAL REVOLUTIONARY ARMY MEDAL

Of "X" form. incised with a head portrait of Chiang Kai-shek the reverse with Chinese inscription and a tower. 3.5cm x 3.5cm approx. 19 grams 于 1936 年 7 月 9 日国民革命军誓师北伐十周年纪念日颁行, 为纪念北伐战争中凡师长以上之将领著有功绩者。

Provenance: From the estate of General Tsai Tingkai (1892-1968), In 1930, he served as the general of the 19th Route Army and the commander of Battle of Shanghai.

\$2,000-\$4,000



Lot 173
纯金民族英雄勋章 款识: 民国廿三年费城全体华侨敬赠 蔡廷锴将军惠存
GOLD NATIONAL HERO MEDAL

Of star form, inscribed in Chinese with "From all the overseas Chinese in Philadelphia to General Tsai Tingkai at 23 years of the Republic of China" surrounding the "National Hero" 5.5cm x 5.5cm approx. 0.8oz

Provenance: From the estate of General Tsai Tingkin (1892-1968) , In 1930, he served as the general of the 19th Route Army and the commander of Battle of Shanghai.

\$1,000-\$2,000



Lot 174
抗日英雄勋章 款识：美驻砵仑秉公保良堂敬赠 蔡廷锴将军惠存
WAR OF RESISTANCE HERO MEDAL

Of shield form, inscribed in Chinese. 6.5cm x 6cm approx. 0.8oz
 Provenance: From the estate of General Tsai Tingkin (1892-1968) , In 1930, he served as the general of the 19th Route Army and the commander of Battle of Shanghai.

\$1,000-\$2,000



Lot 175
抗日英雄勋章 款识：美洲砵仑中华会馆敬赠 蔡廷锴将军惠存
WAR OF RESISTANCE HERO MEDAL

Of shield form, inscribed in Chinese. 4.3cm x 5.2cm approx.1.1oz
 Provenance: From the estate of General Tsai Tingkin (1892-1968) , In 1930, he served as the general of the 19th Route Army and the commander of Battle of Shanghai.

\$400-\$600



Lot 176
纪念章三枚
GROUP OF ANTIQUE CHINESE MEDALS

The set comprising of three medals, two with Chiang Kai-shek's head portrait. 2.9cm x 1.9cm; diam: 2.3cm; 2.9cm x 3.3cm Total approx: 0.5oz

Provenance: From the estate of General Tsai Tingkin (1892-1968) , In 1930, he served as the general of the 19th Route Army and the commander of Battle of Shanghai.

\$500-\$800



Lot 177

徐悲鸿 (1895-1953) 喜鹊 水墨纸本 镜心连框
XU BEIHONG (1895-1953) MAGPIE WITH DEDICATION

上款人: 贤初将军即蔡廷锴

Depicting magpie and willow, ink and color on paper, dedicated to General Tsai Tingkin mounted, signed by the artist with one seal. 82cm x 36cm

Provenance: From the estate of General Tsai Tingkin (1892-1968), In 1930, he served as the general of the 19th Route Army and the commander of Battle of Shanghai.

\$150,000-\$250,000



Lot 178

何香凝 (1878-1972) 松菊 设色纸本 镜心连框

HE XIANGNING (1878-1972) CHRYSANTHEMUM, W/ DEDICATION

上款人：笑花先生即叶少华 (1894-1986)，早期随孙中山加入同盟会，曾任广东筹饷总外长、广东中央银行副行长、管辖造币厂、政府顾问，1947年去港参于李济深、何香凝、蔡廷锴等爱国民主活动，1948年加入中国民革委员会。建国后任广州市政府参事，政协委员等。
蔡廷锴长子蔡绍昌的太太即叶少华之女。

Depicting chrysanthemum and pine tree, signed by the artist with two seals, dedicated to Ye Shaohua - Xiao Hua Xian Sheng (1894-1986), framed. 34cm x 90cm

Provenance: From the estate of General Tsai Tingkin (1892-1968), In 1930, he served as the general of the 19th Route Army and the commander of Battle of Shanghai.

\$20,000-\$30,000



Lot 179

赵少昂 (1905-1998) 花鸟 设色纸本 镜心连框

ZHAO SHAOANG (1905-1998) FLOWER AND BIRD, W/ DEDICATION

上款人：蒋光鼐 [nài] (1888年12月17日—1967年6月8日)，字憬然，广东东莞虎门人，杰出的爱国民主人士和政治活动家，功勋卓著的抗日名将，民革的卓越创始人和领导人，新中国纺织工业的主要领导人。

参加过辛亥革命，曾任国民革命军师长，第十一军副军长，参加中原大战。1930年任第十九路军总指挥兼淞沪警备司令。1932年1月28日，率领十九路军抗击日军的侵略。1949年，开始担任全国政协委员，后又历任中国纺织工业部部长，全国政协常委等职务。1930年5月，中原大战爆发，蔡廷锴率部助蒋作战，立下战功。蒋介石扩编蔡廷锴、蒋光鼐两师为19路军，任命蒋光鼐为19路军总指挥，蔡廷锴为19路军军长，并颁奖100万元，特奖蔡廷锴本人数万元，二等宝鼎章。

叶少华 (1894-1986)，早期随孙中山加入同盟会，曾任广东筹饷总外长、广东中央银行副行长、管辖造币厂、政府顾问，1947年去港参于李济深、何香凝、蔡廷锴等爱国民主活动，1948年加入中国民革委员会。建国后任广州市政府参事，政协委员等。
蔡廷锴长子蔡绍昌的太太即叶少华之女。

Depicting a bird standing on the branch of a blossoming poney, color and ink on paper, signed by the artist with three artist's seals, dedicated to General Jiang Guangnai, framed. 38.5cm x 74.5cm.

Provenance: From the estate of General Tsai Tingkin (1892-1968), In 1930, he served as the general of the 19th Route Army and the commander of Battle of Shanghai.

\$20,000-\$30,000



Lot 180

赵少昂 (1905-1998) 花鸟 设色纸本 镜心连框
ZHAO SHAOANG (1905-1998) FLOWER AND BIRD

Depicting a bird standing on a blossoming prunus tree, color and ink on paper, signed by the artist with one seal, framed. 45cm x 28cm

Provenance: From the estate of General Tsai Tingkin (1892-1968), In 1930, he served as the general of the 19th Route Army and the commander of Battle of Shanghai.

\$5,000-\$8,000



Lot 181

陈文希 (1906-1991) 花鸟两副 设色纸本
CHEN WENHSI (1906-1991) GOOSE AND BIRD

Depicting bird and goose, ink and color on paper, signed by the artist with one seal on each painting. 44cm x 34cm each

Provenance: From the estate of General Tsai Tingkai (1892-1968), In 1930, he served as the general of the 19th Route Army and the commander of Battle of Shanghai.

\$2,000-\$3,000



Lot 182
何香凝 (1878-1972) 松菊 设色纸本 挂轴
HE XIANGNING (1878-1972) PINE AND CHRYSANTHEMUM
 上款人: 蔡绍昌, 为蔡廷锴长子

Depicting chrysanthemum and pine tree, color and ink on paper, signed by the artist with one seal, hanging scroll. 30cm x 83cm

Provenance: From the estate of General Tsai Tingkin (1892-1968), In 1930, he served as the general of the 19th Route Army and the commander of Battle of Shanghai.

\$20,000-\$30,000



Lot 183
郑定裕 (b. 1916) 风景油画
ZHENG DINGYU (B.1916) LANDSCAPE OIL PAINTING

Depicting a stunning landscape scene with cherry blossom, swan, and houses, signed and dated by the artist at the right bottom, framed. 64cm x 90cm

Provenance: From the estate of General Tsai Tingkin (1892-1968), In 1930, he served as the general of the 19th Route Army and the commander of Battle of Shanghai.

\$2,000-\$3,000



Lot 184
清 亲王书法
GROUP OF FU AND SHOU CALLIGRAPHY SCRIPTS, QING

Comprising of a 'Shou' script and a 'Fu' script, written with black ink on red embroidered pieces mounted in gold fabric, framed. 62.7 x 62.6, 61x 60.5 cm

Provenance: From the estate of General Tsai Tingkai (1892-1968), In 1930, he served as the general of the 19th Route Army and the commander of Battle of Shanghai.

\$300-\$500



Lot 185
十六/十七世纪 玉把铜炉
CHINESE CARVED JADE HANDLE BRONZE CENSER, 16/17TH C.

The censer of globular form, flanked with two Chilong handles on the side, supported on three beast-head feet, accompanied with a pierced fitted wooden cover, attached with a jade figural carving handle on the top. H:20.5cm

Provenance: From the estate of General Tsai Tingkai (1892-1968), In 1930, he served as the general of the 19th Route Army and the commander of Battle of Shanghai.

\$1,000-\$1,500



Lot 186
晚清 小铜炉
CHINESE MINIATURE BRONZE CENSER, LATE QING

Of compressed globular body flanked with two beast head ears on the side, supported on the slim legs, accompanied with a fitted dome-like cover with a beast sitting on the top. H:10.5cm

Provenance: From the estate of General Tsai Tingkai (1892-1968), In 1930, he served as the general of the 19th Route Army and the commander of Battle of Shanghai.

\$300-\$500



Lot 187
翡翠葫芦挂坠金项链
CHINESE JADEITE GOURD PENDANT

The pendant carved in the shape of a gourd with vines, the stone of green tone with celadon inclusions, accompanied by a gold chain. L:2.1cm W:0.7cm Weight:12 grams

Provenance: From the estate of General Tsai Tingkin (1892-1968)

\$1,000-\$1,500



Lot 188
佛像挂坠项链
CHINESE BUDDHIST FIGURES PENDANT

Comprising of three Buddhist pendants set within a transparent container, the big one of triangle form and the two smaller one follows the shape of the Buddhist, three pendants attached together with a gold chain. Triangle pendant: H:3.3cm; W: 3cm Weight: 37cm

Provenance: From the estate of General Tsai Tingkai (1892-1968), In 1930, he served as the general of the 19th Route Army and the commander of Battle of Shanghai.

\$800-\$1,200



Lot 189
翡翠荷花葫芦挂坠项链
CHINESE JADEITE LOTUS AND GOURD PENDANT

The stone finely carved with lotus blossom and a gourd with vines, the stone of transparent yellow tone with some russet inclusions, accompanied with a gold chain. H:4.5cm W: 3.5cm Weight: 18grams

Provenance: From the estate of General Tsai Tingkin (1892-1968), In 1930, he served as the general of the 19th Route Army and the commander of Battle of Shanghai.

\$800-\$1,200



Lot 190
18K 金钻石戒指
DIAMOND AND 18K GOLD RING

Of the rectangular design, set with circular-cut diamonds, accompanied with a fitted box. Inner Diam: 17.12mm; approx. 7 grams

Provenance: From the estate of General Tsai Tingkin (1892-1968) , In 1930, he served as the general of the 19th Route Army and the commander of Battle of Shanghai.

\$3,000-\$5,000



Lot 191
黄金钻石方形戒指
DIAMOND INLAID SQUARE FORM GOLD RING

Of square form design, set with a circular-cut diamond in the center, accompanied with a fitted box. inner diam: 17.61mm; approximately 11 grams

Provenance: From the estate of General Tsai Tingkin (1892-1968) , In 1930, he served as the general of the 19th Route Army and the commander of Battle of Shanghai.

\$10,000-\$15,000



Lot 192
钻石翡翠黄金项链
DIAMOND AND JADEITE PENDANT NECKLACE

The pendant of shield form inlaid with diamond and jadeite. 1.5cm x 1.8cm approx. 7 grams

Provenance: From the estate of General Tsai Tingkin (1892-1968) , In 1930, he served as the general of the 19th Route Army and the commander of Battle of Shanghai.

\$2,000-\$3,000



Lot 193
翡翠胸针、翡翠钻石金手链一组
GROUP OF JADEITE BROOCH & BRACELET

Comprising of a bracelet and a brooch, the brooch of a ruyi form surrounded with a band of diamond, the brooch of a leaf form. W: 6.5cm; 2.6cm

Provenance: From the estate of General Tsai Tingkin (1892-1968) , In 1930, he served as the general of the 19th Route Army and the commander of Battle of Shanghai.

\$500-\$800



Lot 194
欧米伽手表
VINTAGE OMEGA QUARTZ CONSTELLATION WRIST WATCH

With plain watch surface attached with a black leather band.
Diam: 3.1cm

Provenance: From the estate of General Tsai Tingkin (1892-1968)
, In 1930, he served as the general of the 19th Route Army and
the commander of Battle of Shanghai.

\$800-\$1,200



Lot 195
招财进宝足金老鼠
GOLD MOUSE CARVING

Vividly carved as a gold mouse holding a coin in its hands, inset
with a pair of red eyes, H: 2.8cm approx. 20 grams

Provenance: From the estate of General Tsai Tingkin (1892-1968)
, In 1930, he served as the general of the 19th Route Army and
the commander of Battle of Shanghai.

\$1,000-\$1,500



Lot 196
香港 14K 金龙年纪念金币 面额 1000, 1976 年 带证书
GOLD COIN FOR YEAR OF DRAGON 1976 WITH CERTIFICATE

The \$1000 golden coin incised in English and Chinese
surrounding a dragon, the reverse with the portrait of Queen
Elizabeth the Second. accompanied by a certificate. Diam: 2.85cm
approx.16 grams

Provenance: From the estate of General Tsai Tingkin (1892-1968)
, In 1930, he served as the general of the 19th Route Army and
the commander of Battle of Shanghai.

\$1,500-\$2,500



Lot 197
黄玉玉璧、刀形墨绿玉挂件
**CHINESE YELLOW JADE BI DISC&CHINESE JADE KNIFE
CARVING PENDANT**

The disc of plain form is of creamy yellow tone with russet
inclusions. D:5.7cm

The jade carved in the form of a knife, the stone of dark green
tone, mounted on a gold piece forming a pendant. L:5.7cm

Provenance: From the estate of General Tsai Tingkai (1892-1968)
, In 1930, he served as the general of the 19th Route Army and
the commander of Battle of Shanghai.

\$500-\$800

Estate of H.H.Pao Family's Previous Collection

LOT 197A-208

鲍恒发家族旧藏



Lot 197A

金 / 元 磁州窑剔花罐
CIZHOU SGRAFFIATO BLACK GLAZED
JAR, JIN/YUAN DYNASTY

The rounded potted body rising from the countersunk base and surmounted by a canted lip, covered allover with a rich mossy brown glaze carved through to the buff ware with a wide band of lotus plants and pomegranate plants, divided with vertical panels incised with ' Wu Jia Zao' and poems, between the scroll-band around the shoulder and double lines, the recessed base unglazed. H: 21.3cm

Provenance: From a very famous Toronto Collector Hang Hwie Pao's previous collection

\$3,000-\$5,000

Lot 198

耀州窑青釉刻画瓷枕
YAOZHOU CELADON GLAZED PORCELAIN PILLOW

Of octagonal form, the body covered with celadon glaze and incised with interlaced vines design with a pheonix, the unglazed base reveals the buffware. 20cm x 17cm x 12cm

Provenance: From a very famous Toronto Collector Hang Hwie Pao's previous collection

\$2,000-\$3,000



Lot 199

清 琥珀雕竹蝉笔筒
CHINESE AGATE BAMBOO & CICADA BRUSHPOT, QING

An agate carved brush pot, carved as conjoined bamboo stems and a cicada, applied with a carved bone rim. H: 10.2cm D: 7cm

Provenance: From a very famous Toronto Collector Hang Hwie Pao's previous collection

\$1,000-\$1,500



Lot 200
明 龙泉青瓷花觚 (有补)
CHINESE 'LONGQUAN' CELADON BEAKER VASE, GU (REPAIRED) , MING

Of archaic bronze form, the central section rising from a spreading foot to tall trumpet neck, the bulbous body carved with geometric pattern, the body covered with small crackles. H: 22cm Diam: 14cm

Provenance: From a very famous Toronto Collector Hang Hwie Pao's previous collection

\$300-\$500



Lot 201
越窑陶瓶
CHINESE YUE YAO POTTERY VASE

The slightly tapering body rising to an everted neck and a straight neck, the shoulder and neck decorated with hand potted creature, the unglazed base reveals the buffware. H:24cm

Provenance: From a very famous Toronto Collector Hang Hwie Pao's previous collection

\$300-\$500



Lot 202
元 青瓷中碗、青瓷刻花碗一组
SET OF TWO CELADON GLAZED BOWLS, YUAN

The group comprising of a celadon bowl, of rounded sides rising from a short foot, incised around the exterior with flower petals, overall covered in greyish green glaze, the unglazed base reveals the buff body, diameter 16 cm; and a creamy celadon glaze bowl, the interior incised with lotus and boys, the unglazed base reveals the buffware, Diam: 17.5cm

Provenance: From a very famous Toronto Collector Hang Hwie Pao's previous collection

\$500-\$800



Lot 203
元 暗刻青白釉碗
GREEN INCISED BOWL, YUAN

A green glazed bowl, of rounded sides supported on a short circular foot, incised to the exterior with floral sprays, overall covered in soft green glaze except the mouth rim, diameter 15.5 cm

Provenance: From a very famous Toronto Collector Hang Hwie Pao's previous collection

\$500-\$800



Lot 204
十八世纪 粉彩碟子、伊万里茶壶一组
EXPORT FAMILLE ROSE DISHES & IMARI TEAPOT, 18TH C.

A famille rose vase, of ovoid body with waisted neck and circular foot rim, decorated with the bajixiang emblems amidst lotus blooms borne on leafy scrolling stems, all reserved on a bright ruby-red ground, the interior and base covered in turquoise glaze, the base with a central gilt square for the six-character seal mark in iron-red, along with a finger print, height 22 cm, diameter 11.5 cm

Provenance: From a very famous Toronto Collector Hang Hwie Pao's previous collection

\$500-\$800

Lot 205
钧窑碗
JUN TYPE BOWL

Of globular body, covered in a sky-blue glaze and a crimson splash to the interior Diam: 19cm

Provenance: From a very famous Toronto Collector Hang Hwie Pao's previous collection

\$500-\$800



Lot 206
吴作人 (1908-1997) 款 金鱼成扇
AFTER WU ZUOREN (1908-1997) GOLD FISH FAN

Depicting two goldfishes, ink and color on paper, signed by the artist with one seal.

Provenance: From a very famous Toronto Collector Hang Hwie Pao's previous collection

\$1,000-\$1,500



Lot 207
民国 红釉赏瓶 《乾隆年制》款
CORAL GLAZED VASE QIANLONG REPUBLIC PERIOD

The ovoid body rising from a flared foot to a waisted neck and a straight rim. the body covered with orangish-red glaze, the base with four-character Qianlong mark. H: 21cm

Provenance: From a very famous Toronto Collector Hang Hwie Pao's previous collection

\$300-\$500



Lot 208
青花笔筒
BLUE AND WHITE BRUSH POT

Of cylindrical form, the body decorated with two circular panels of poney and two lobed panels of 'hundred antiques' motifs, against a blue ground under a band of scrolling clouds. H: 18cm , Diam: 20cm

Provenance: From a very famous Toronto Collector Hang Hwie Pao's previous collection

\$300-\$500



Lot 209
花鸟瓷板画
POLYCHROME ENAMELED PORCELAIN PANELA

Depicting a bird standing on a wood pole with chrysanthemum and daisy, signed by the artist with two seals. 22.3cm x 37cm

\$300-\$500



Lot 210
瘦木雕人像
C A R V E D
BURLWOOD FIGURE
OF AN IMMORTAL

The wood carved figure finely worked to conform to the natural contours of the material, the face with beard, the long robe decorated with the natural form of the burlwood, two bare feet standing on branches H: 98cm W: 50cm

\$3,000-\$5,000

Lot 211

清 嵌玉银盖盒

CHINESE JADE INSET SILVER HINGED BOX, QING

The box mounted with a carved jade in the center of the cover, the jade carved with peach, bat, gourd, and floral, the stone of a transparent celadon tone, the base incised with four small marks. 11cm x 8.7cm x 3.5cm

\$800-\$1,200



Lot 211A

十七世纪 四花瓣玉水洗带座

CHINESE LOBED JADE BRUSH WASHER W/STAND, 17TH C.

Of overall square form with four round lobes, the exterior carved with a floral, the stone of transparent celadon tone, accompanied with a fitted wooden stand. 7cm x 7cm x 2.5cm

\$1,500-\$2,000

Lot 211B

十七世纪 玉鹅摆件带座

CHINESE JADE GOOSE CARVING W/STAND, 17TH C.

Vividly depicting a goose, with head turned backward to its tail, the body carved with peach, the stone of celadon tone, accompanied with a fitted wooden stand, 5.8cm x 2.8cm x 2cm

\$800-\$1,200



Lot 212

玉挂坠一组两件

CHINESE JADE PENDANT & TUBULAR BEAD

Comprising of a square form jade pendant and a tubular bead, the square pendant decorated with an archaic pattern, the tubular pendant decorated with a repeated cloud pattern. 4.5cm x 4.3cm x 0.5cm; L: 5cm

\$500-\$800

Lot 213

玉雕龙形佩

CHINESE CARVED JADE DRAGON PENDANT

The pendant carved as the form of a dragon turning head back to its tail, the body decorated with the grain pattern. 6cm x 5cm x 0.6cm

\$400-\$600



Lot 214

民国 黄杨木雕如意
SMALL BOXWOOD SCEPTER,
REPUBLIC P.

Deftly carved in high-relief and openwork as a branch of Lingzhi with two birds resting in the middle. L: 18.5cm

\$300-\$500



Lot 215

古墨雕福寿抱月瓶 带盒
ANTIQUE INK CARVED MOONFLASK WITH
BOX

Of compressed rounded body rising to a waisted neck and lipped rim, the neck flanked by pair of handles, one side carved with peach tree and bat, and the reverse incised with immortal figures.

\$500-\$800

Lot 216

嵌玉掐丝珐琅盖盒
CELADON JADE INSET CIRCULAR COVERED
BOX, 19-20TH C,

The 19/20th-century box of rounded sides rising from a short foot to an incurved flanged rim, brightly enameled around the exterior with mythical beasts reserved on a yellow ground, the domed cover similarly decorated and inlaid with an 18/19th-century jade bi disc carved in high-relief with Chilong. D: 19cm; Jade diam: 6.1cm

\$1,000-\$1,500





Lot 217
双耳铜壶对 《大明宣德》款
PAIR OF CHINESE BRONZE TAOTIE VASES XUANDE MARK

Each of baluster form with a rectangular section, the body decorated with repeated decorative patterns, the shoulder flanked by a pair of mask handles each suspending a loose ring, the base with four-character Xuande mark. H: 27.5cm each

\$800-\$1,200



Lot 218
十九世纪 铜瓶、铜水盂
TWO BRONZE ARTICLES, 19TH C.

The group comprising of a bronze vase and a bronze waterpot, the vase of the compressed globular body rising to a waisted neck flanked with two cylindrical ears, the body decorated with an archaistic pattern, the waterpot of domed form. H: 11.7cm; D: 7cm

\$300-\$500



Lot 219
铜佛像两件组
TWO ASIAN BRONZE FIGURES

The group comprising of two bronze Buddhist figures, both standing on a lotus base. H: 18.5cm; 15cm

\$300-\$500



Lot 220
清 粉彩蓝地梅花瓶对
PAIR OF CHINESE FAMILLE ROSE VASES, QING

Each of slightly tapering body with a square section, rising to a waisted neck and an everted rim, the exterior decorated with prunus blossom against a light blue ground, the unglazed base reveals the buffware. H:25cm

\$300-\$400



Lot 221
明嘉靖 青花鹤纹碗 《大明嘉靖年制》
BLUE AND WHITE BOWL, JIAJING MARK AND PERIOD

Of rounded form, the exterior decorated with cranes and flaming clouds, the base with six-character Jiajing mark and of period. Diam: 18.2cm H: 9.4cm

Provenance: Estate from previous collection of an established Hong Kong collector

\$15,000-\$20,000



Lot 222
清 绿釉文房瓷器一组三件
THREE CHINESE GREEN GLAZE PORCELAIN ARTICLES, QING

The group comprising of three scholar's articles including two brush washers and a waterpot, the interior of the brush washer decorated with yellow and pink flower reserve on a turquoise blue background, the waterpot decorated with peach and the interior glazed yellow. H: 10cm; 8.5cm; 3.5cm

\$300-\$400



Lot 223
十九世纪 青花鼻烟壶、印泥盒
TWO BLUE AND WHITE SNUFF BOTTLE & PASTE BOX, 19TH C.

The group comprising of a blue and white snuff bottle and a paste box, the snuff bottle of cylindrical form with a square section, the exterior painted with boys within landscape panels, the paste box decorated with interlaced floral design with six-character Wanli mark on the base. H:7.5cm D:6.5cm

\$300-\$400



Lot 224
二十世纪 嵌大理石高低木座
CHINESE MARBLE INSET HARDSTONE STAND, 20TH C.

The stand comprising of a taller part and a shorter part, the tall part inset with a round marble and the short stand inset with a square marble. 28.5cm x 36cm x 19cm

\$200-\$300



Lot 225
晚清 嵌大理石酸枝木花几
TWO MARBLE INSET SUANZHI WOOD PLANT STANDS, LATE QING

Comprising of two marble inset stand, the short strand of a square top with notched corners resting on the pierced apron, the tall of circular top resting on the pierced apron. H: 92cm; 63.5cm

\$600-\$800



Lot 226
民国 酸枝木禅椅一对
PAIR OF CHINESE SUANZHI WOOD STOOLS, REPUBLIC P.

Each of mitered. mortise and tenon frame construction, the frame enclosing a mat seat, above a simple apron, supported on four straight legs of square section. 58.cm x 58.5cm x 51.5cm

\$1,000-\$1,500

Lot 227
晚清 酸枝镶螺钿高几
CHINESE MARBLE INSET SUANZHI STAND, LATE QING

The circular top resting on a pierced waist, the lobed apron continuing into slender legs, the top inlaid with brown-tone marble stone, the body inset with mother-of-pearl. H: 107.5cm

\$500-\$600





Lot 228

晚清 酸枝半案

CHINESE SUANZHI WOOD ALTAR TABLE, LATE QING

The paneled rectangular top supported on waisted waist and the elegant square-section legs terminating in hoof feet. 90cm x 45cm x 86cm

\$500-\$800

Lot 229

沉香木雕角杯

AGARWOOD LANDSCAPE LIBATION CUP

Naturalistically carved in the form of a trunk section, carved in the exterior with a mountainous landscape depicting scholar and an attendant playing instrument on a boat, and a man standing amongst towering pine tree, the wood patinated to a brown color, the interior brown-lacquered. H: 10cm

\$4,000-\$7,000



Lot 230

孙星阁 (1897-1991) 梅花 设色纸本 连框

SUN XINGGE (1897-1996) PRUNUS

Depicting prunus, signed by the artist with four artist's seals color and ink on paper, framed. 30cm x 125cm

\$3,000-\$5,000



Lot 231
于右任 (1879-1964) 书法对联 水墨纸本 挂轴
YU YOUREN (1879-1964) CALLIGRAPHY COUPLET

Calligraphy couplet, ink on paper, signed by the artist with one artist's seal. 137.5cm x 38cm

\$8000-\$12,000



Lot 232
张书旗 (1900-1957) 花卉 设色纸本 连框
ZHANG SHUQI (1900-1957) PONEY

Depicting blossoming poney with branches and leaves, ink and color on paper, signed Zhang Shuqi with one artist's seal, framed. 32cm x 87cm

\$8,000-\$12,000



Lot 233
齐良己 (1923-1988) 小鸡 设色纸本 挂轴
QI LIANGJI (1923-1988) CHICKS

Depicting thirteen chicks and two crickets, signed Qi Liangji with two artist's seals, ink and color on paper, hanging scroll. 34.5cm x 139.5cm

\$3,000-\$5,000



Lot 234
齐良己 (1923-1988) 鱼 水墨纸本 挂轴
QI LIANGJI (1923-1988) FISHES

Depicting nine fishes in various sizes, signed Qi Liangji with two artist's seal, ink on paper, hanging scroll. 34.5cm x 135.5cm

\$3000-\$5,000

Lot 236
夏耐青 花蝶图 设色扇面 连框
XIA NAIQING, PRUNUS AND BUTTERFLY

Depicting blossoming prunus and butterfly, ink and color on paper, signed by the artist with two artist's seal.

\$500-\$800



Lot 235
石涛 (1642-1707) 款 山水册页一组四副
AFTER SHITAO (1642-1707) FOUR LEAVES ALBUM

Signed, inscribed, and with twenty-three seals of the artist, ink and color on paper, album of four leaves. 28.5cm x 25.8cm

\$1,000-\$1,500





Lot 237
王伟 花鸟 挂轴
WANG WEI FLOWER AND BIRD

Depicting birds, prunus and poney, ink and color on paper, signed by the artist with two artist's seals hanging scroll. 75.1cm x 25.8cm

\$2,000-\$3,000



Lot 238
挂轴一组两件
GROUP OF TWO PAINTINGS

Both depicting landscape and pavilion with figures within, signed by the artists each with two seals, ink on paper, hanging scroll.

\$500-\$800

Lot 239
元或更早 铜鎏金带钩
CHINESE GILT BRONZE BELT BUCKLE, YUAN DYNASTY OR EARLIER

Cast in the form of a sinuous dragon, the serpentine body in profile undulating with ribbon-like fins, at one end the dragon's head, the tail end issuing a hook terminating in a smaller serpent-like head, a knot at the interior for attachment. L:13.6cm

\$800-\$1,200





Lot 240

康熙 青花冰梅博古纹开光粥罐

BLUE AND WHITE HUNDRED ANTIQUES JAR AND COVER KANGXI PERIOD

Of tapering body to a cylindrical mouth, the body decorated with hundreds of antique motifs within panels against a blue ground with white prunus, accompanied with a fitted cover. H:17.5cm

\$6,000-\$10,000

Lot 241

清雍正 青花龙纹碗 《大清雍正年制》

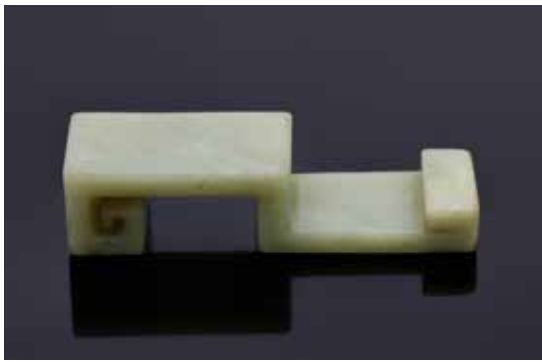
BLUE AND WHITE DRAGON BOWL YONGZHENG MARK & PERIOD

Of rounded side rising from a cylindrical foot, the exterior painted with the lower body of the dragon amidst scrolling clouds, the interior painted with the head and upper body of the dragon with a flaming pearl, the base with six-characters Yongzheng mark. Diam: 14.9cm.

Provenance: Christie's, Fine Chinese Ceramics and Works of Art Part I & II, New York, 2011 September 15, Lot 1516.

\$5,000-\$8,000





Lot 242
青玉书卷式墨床
CHINESE CELADON JADE INK REST

The rectangular stand boldly-carved in the form of archaic angular scrolls, the stone of a pale celadon tone with tiny russet inclusions. 9.8cm x 2.3cm x 2.5cm

\$500-\$800

Lot 243
晚清 白瓷观音立像
DEHUA FIGURE OF GUANYIN, LATE QING

Standing barefoot on a pedestal of swirling cloud, the face modeled with a serene expression with downcast eyes, the hair gathered in a high chignon secured by a tiara beneath a draped cowl extending over the rounded shoulders, the long billowing robes open at the chest revealing a beaded foliate-motif necklace. H:46.3cm

\$3,000-\$5,000



Lot 244
清 窑变釉小花盆一对
PAIR OF FLAMBE GLAZE MINIATURE JARDINIÈRES, QING

Each jardinière of rectangular section with slightly tapering body to a flared rim, all supported on four bracket feet, the exterior decorated with pink-ish red glaze with crackles, the base drilled with two holes. 9.8cm x 20.7cm x 12cm each

\$3,000-\$4,000



Lot 245

窑变釉双耳瓶 《雍正年制》款

FLAMBE GLAZE DOUBLE EAR VASE, YONG ZHENG MARK

Rising to a slightly flared rim with cusped corners, set with two rectangular handles, molded to the front and back with a peach-shaped panel, covered overall in a lustrous purplish-red glaze highlighted with milky cascades of sky-blue and creamy white, the base with four-characters Yongzheng mark. H:17.2cm

\$400-\$600

Lot 246

晚清 龙纹粉彩大盘

FAMILLE-ROSE DRAGON CHARGER, LATE QING

Depicting two dragons in pursuit of a flaming pearl amidst colorful scrolling clouds, the back painted with scrolling lotus blossom, the unglazed foot ring reveals the buff ware. D:30.5cm

\$500-\$700



Lot 247

十八世纪 德化白瓷花觚 带竹盒

BLANC-DE-CHINE GU VASE, GU WITH BAMBOO BOX, 18TH C.

Of archaistic gu-form, the elongated body with a bulbous middle section between two raised fillets, rising from a tall splayed foot to a trumpet mouth, covered overall in a creamy white glaze, accompanied with a fitted box. H:19.5cm

\$3,000-\$4,000





Lot 248

法琅彩西洋人物小瓶 《乾隆年制》款 带盒

LANDSCAPE & WESTERN FIGURES' ENAMEL VASE, QIANLONG MARK

The slightly tapering body of square section, the body painted with western figures within a landscape, the base with four-character Qianlong mark. H: 15.9cm

\$10,000-\$15,000

Lot 249

青瓷圈边小花盆 《雍正年制》款 带盒

CHINESE CELADON-GLAZE PLANTER, YONGZHENG MARK

Of cylindrical sides rising from a short ring foot to an everted rim, the body carved with grooves, applied with a green-glaze, the base drilled with a small hole surrounded by four-character Yongzheng mark. H: 9.1cmDiam:13cm

\$2,000-\$3,000



Lot 250

青花缠枝莲纹小碗 《大清乾隆年制》款 带盒

CHINESE BLUE AND WHITE FLORAL BOWL, QIANLONG MARK

Of tapering body, the exterior decorated with an interlaced floral design the interior with a similar circular design in the middle, the base with six-character Qianlong mark. H: 5.4cm D: 11cm

\$15,000-\$20,000





Lot 251

米黄釉折腰碗 《大清道光年制》款 带盒
CHINESE BROWN GLAZE BOWL, DAOGUANG MARK WITH BOX

The bowl of overall conical form, rising from a ring foot to a slightly flared rim, the exterior covered with yellowish-brown glaze, the interior and the base glazed white, the base with six-character Daoguang mark. H:8.2cm Diam: 15.8cm

\$8,000-\$10,000

Lot 252

清 德化白瓷双耳炉 带盒
BLANC-DE-CHINE DOUBLE EAR CENSER WITH BOX, QING

Of compressed globular form rising from a conical foot to an everted rim, the body decorated with a band of archaic decoration and flanked with two stylized dragon-form loop handles on the side. The unglazed foot ring reveals the buffware. H:9.2cm

\$1,500-\$2,000



Lot 253

粉青地描金云蝠纹富甲天下托盘 《大清嘉庆年制》
TROMPE-L'OEIL CELADON PLATE, JIAQING MARK W/ BOX

The shallow circular plate decorated with gilt bat amidst scrolling cloud, the base with six-character Jiaqing mark, the interior of the dish set with a variety of dried fruits and nuts and a small crab, all naturalistically molded or carved in various media and placed as a trompe-l'oeil. Diam: 19.2cm

\$60,000-\$80,000



Lot 254

康熙 青花百子图笔筒

BLUE AND WHITE HUNDRED BOYS BRUSHPOT, KANGXI P.

Of slightly waisted cylindrical form, the body painted with the scene of 'Hundred Boys' at play, set in a lake-side garden beneath tall pine trees and bamboo trees, the unglazed base reveals the buffware. H:15cm

\$2,000-\$4,000

Lot 255

粉青釉双耳瓶 《大清乾隆年制》款

CELADON DOUBLE-EAR VASE, QIANLONG MARK

Of tapering body to a protruding compressed shoulder, to a waisted neck flanked with two stylish handles and an everted rim, all supported on a spreading foot, the body covered with celadon glaze base with six-character Qianlong mark. H: 28.1cm

\$8,000-\$12,000





Lot 256

晚清 粉彩仕女图九子攒盘 带酸枝盒

CHINESE NINE-PIECE FAMILLE ROSE 'LADIES' SET, LATE QING

The shaped dishes forming a foliated square when assembled, the interior of each dish finely painted with ancient Chinese ladies, the unglazed base reveals the buffware, accompanied with a fitted wood cover. 26.5cm x 26.5cm x 1.6cm

\$600-\$1,000

Lot 257

创汇期 玉雕童子拜观音 带座

CHINESE JADE CARVED LADY & BOY FIGURE W/ STAND, CHUANGHUI PERIOD

The finely worked figure of a lady depicted standing on rugged rockwork, rendered holding the religious instrument with a boy holding her waistband, the stone of a creamy white tone with russet inclusions, accompanied with a fitted stand. H: 15.5cm without stand

\$300-\$500



Lot 258

青玉龙带钩

CHINESE CELADON JADE DRAGON BELT HOOK

The curved shaft terminating in a horned dragon head, worked with a circular knob to the reverse, the stone of an even olive green tone. L:9cm

\$200-\$300



Lot 259

银元 5 枚

SET OF FIVE CHINESE YUAN SHIKAI SILVER COINS

Dollar, undated, legend in Chinese, reverse with the head portrait of Yuan Shikai, Diam: 3.9cm Weight: 27 grams each

\$300-\$500



Lot 260
翡翠小鼻烟壶一对
PAIR OF MINIATURE JADEITE SNUFF BOTTLES

Comprising of two jadeite snuff bottles, of ovoid form, one carved with bats amidst clouds and the other carved with peaches and flanked with two dragon head ears on the shoulder, the stone of white and green tone. H: 4cm & 4.2cm

\$500-\$800



Lot 261
明玉勒子
WHITE JADE COLUMNAR PENDANT, MING

The pendant of cylindrical form, the body carved in low relief with an archaistic pattern, the stone of celadon tone with black inclusions. H: 2.5cm Diam: 1.7cm

\$200-\$300



Lot 262
翡翠瓜雕件
CHINESE JADEITE PUMPKIN CARVING

Carved as a small ovoid pumpkin with bulging lobes and surrounding by vines, the light green stone suffused with icy-white inclusion. L: 3.6cm

\$200-\$300



Lot 263
铜铃
CHINESE ENAMELED BRONZE BELL

The bell decorated with blue enamels on the body and attached with a Peking glass ball on top, H: 9cm D: 6.5cm

\$200-\$300



Lot 264

清 粉彩花卉碗 《恺斋》款

FAMILLE ROSE 'FLORAL' PLATE, KAIZHAI MARK, QING

Of globular form, the bowl painted with prunus, chrysanthemum, and morning glory, the base with two-characters Kaizhai mark. H: 6.3cm
Diam:16.1cm

\$300-\$500

Lot 265

汪琨 (1877 - 1946) 画、袁希濂 (? — 1950) 书法 设色扇面

WANG KUN (1877-1946) YUAN XILIAN (?-1950) FAN

Depicting landscape with mountain, lake, pavilion, trees and a figure on the lake, the reverse with calligraphy and two seals on each side.

\$1,000-\$1,500



Lot 266

人物故事纸本 设色纸本 连框

UNTITLED, FIGURAL STORY

Depicting figures dressed in soldier's costume and attendant's clothes, with both interior and exterior scene, ink and color on paper, framed.
41.5cm x 133cm without frame

\$300-\$500



Lot 267
十九世纪 酸枝公座椅
SUANZHI WOOD ARMCHAIR, 19TH C.

The armchair with a back split in the form of a vase, carved in openwork and inlaid with white marble, the headrest and the openwork spandrels on the back and under the S-shaped armrests all decorated in high-relief, supported on four legs end in scrolling feet with the rectangular stretcher. 46.5cm x 62cm x 101cm

\$700-\$1,000



Lot 268
十九世纪 酸枝木立柜
SUANZHI WOOD CABINET, 19TH C.

The cabinet of rectangular form, the higher body with four drawers mounted with metal handles, the lower body with two hinged door panels enclosed big storage space. 76.3cm x 78cm x 48.5cm

\$800-\$1,200



Lot 269
清 黄花梨三连柜
CHINESE HUANGHUALI ALTAR COFFER, QING

The long rectangular top with everted ends above three drawers, a pair of double-hinged doors below, the end spandrels with plain decoration, accompanied with metal fittings. 90.2cm x 167cm x 48.3cm

\$15,000-\$20,000



Lot 270
十七世纪 出口粉彩花插对
PAIR OF EXPORT GILT FAMILLE ROSE BOUGH POTS,
17TH C.

Each of chamfered rectangular section, the flared sides supported on a splayed foot, painted with figures, insects, animals, and floral scene panels within fruiting vine and tree shrews in relief extending over the sides from branches forming the two loop handles, the cover pierced with five apertures. H: 21.5cm

\$3,000-\$4,000



Lot 271
清 粉彩花瓶对
PAIR OF CHINESE PORCELAIN VASES, QING

Each of elongated hexagonal form, the slight tapering body rising from a flared foot to a waisted neck and a flat rim, the body decorated with floral panels and green, yellow and red glazed decoration. H: 23.5cm

\$300-\$500



Lot 272
铜镜带底座
CHINESE BRONZE MIRROR WITH STAND

Cast in high relief with a central knob encircled by a square frame and four mythical beasts bordered by lines, the outer band with river-like motifs, the dark silver surface with pale green encrustation, accompanied with a fitted wooden stand. Diam: 14.7cm

\$300-\$500



Lot 273
铜佛像
ASIAN BRONZE FIGURE

Modeled standing before a flame-shaped Mandorla on a rounded base, the Buddha dressed in long flowing robes, all supported by splayed four-legged support. H: 17cm

\$300-\$500



Lot 274
明或更早 铜提盃
CHINESE ARCHAISTIC BRONZE VESSEL, MING OR EARLIER

Well cast of oval section, the slightly compressed pear-shaped body supported on a splayed foot, encircled by a band of archaistic decoration, the band interrupted on each side by a loop supporting the u-shaped bail handle, accompanied with a fitted cover, and the base with a rectangular seal. H: 16.5cm

\$1,000-\$1,500



Lot 275
清 仿绿松石釉双龙瓶
CHINESE TURQUOISE GLAZED DRAGON VASE, QING

The vase of square section with an oval body, rising from a flared foot to a flattened waisted neck and flat rim, the neck attached with two Chilong. H:24.5cm

\$300-\$500



Lot 276
民国 黄釉赏瓶
CHINESE YELLOW GLAZED VASE, REPUBLIC PERIOD

Of baluster form, the vase rising from a flared foot to an elongated waisted neck, the body covered with yellow glaze, the base drilled with a hole in the middle, the unglazed foot ring reveals the buff ware. H: 40.5cm

\$200-\$300



Lot 277
晚清 水晶观音立像
CARVED ROCK CRYSTAL FIGURE OF GUANYIN, LATE QING

The goddess is shown standing on a fitted bronze stand, wearing long layered robes and holding a scroll in her hands, the face with eyes downcast in a serene expression, with long hair tied as a knob on top of her head, the stone of very clear clarity. H: 29cm with stand

\$2,000-\$3,000



Lot 278
十七 / 十八世纪 方形双耳铜炉带玉把盖
CHINESE BRONZE SQUARE CENSER WITH COVER, 17TH/18TH C.

Of compressed square form, supported on four bracket feet with two upright loop handles, accompanied with a fitted pierced wooden cover with jade figural handle, the base with ten-characters Chongzhen mark. H: 13cm

\$500-\$1,000

Lot 279
十九 / 二十世纪 仿绿松石釉瓷器一组三件
THREE TURQUOISE GLAZED PORCELAIN ARTICLES, 19TH/20TH C.

The group comprising of three porcelain wares, including a lobed vase of square section attached with a chilong figure on the shoulder; a green glazed vase of ovoid form with an elongated waisted neck, and a compressed globular waterpot. H: 2.3cm; 2.3cm; 4.5cm

\$300-\$400



Lot 280
元 / 明 玉卧马雕件
CHINESE CARVED JADE HORSE FIGURE, YUAN/MING

Lively carved as a recumbent horse with the head resting on the front paws, the stone of russet tone, with reddish-brown inclusions, the back drilled with a hole. W: 7.5cm

\$300-\$500



Lot 281
青花水盂 带盒
CHINESE BLUE AND WHITE WATER POT WITH BOX

Of slightly tapering globular body rising to a cylindrical rim, the exterior decorated with blue floral design and Chinese characters, accompanied with a fitted box. H: 5.5cm

\$200-\$300



Lot 282
十八/十九世纪 青花长颈瓶 带盒
BLUE AND WHITE LANDSCAPE PORCELAIN VASE,
18/19TH C

Of ovoid form rising from a flared foot to an elongated waisted neck and an everted rim, the exterior decorated with a landscape scene, accompanied with a fitted wooden stand and box. H:18cm

\$300-\$400



Lot 283
双耳铜炉 《大明宣德年制》款
BRONZE DOUBLE EAR CENSER

Of compressed globular body, rising to an everted neck, the base with six-character Xuande mark surrounded by two flying dragons in pursuit of a flaming ball. H: 5.8cm

\$500-\$800



Lot 284
粉彩小碗一对 《大清光绪年制》款
PAIR OF FAMILLE-ROSE BOWLS, GUANGXU MARK

Each of ogee form, the deep sides with a constricted waist, rising from a straight foot to a flared rim, brightly decorated to the exterior with poney and scholar's rock, the base with six-character Guangxu mark. H:4cm Diam: 9cm

\$300-\$500



Lot 285
晚清 五彩棒槌瓶
CHINESE FAMILLE-VERTE ROULEAU VASE, LATE QING

The cylindrical body rising to a straight neck and a straight rim, brilliantly enameled with a continuous lively scene depicting poney, bird, and butterfly. H:35.5cm

\$500-\$800



Lot 286
龙纹渣斗 《大清乾隆年制》款
FAMILLE-ROSE DRAGON ZHADOU, QIANLONG MARK

The globular body rising from a cylindrical foot to a waisted neck flaring at the rim, covered with two red dragons in pursuit of a flaming pearls, amidst colorful scrolling clouds, above sea, the base with six-characters Qianlong mark. H:13.5cm Diam: 16cm

\$300-\$500



Lot 287
德化白瓷童子
CHINESE BLANC DE CHINE PORCELAIN CARVED FIGURE

Standing on a bed of swirling waves, one arm raised near the head and the other in front of the chest, dressed in loose fitting clothes, the delineated face slightly turned to the right with hair tied into two buns on the side of the head. H:22.5cm

\$300-\$500



Lot 288
玉雕童子骑牛连座
CHINESE JADE CARVED 'BUFFALO AND BOY' GROUP

The boy scaling the back of the recumbent buffalo, the stone of a white tone with black inclusions, accompanied with a fitted wood stand. 5.1cm x 4cm x 2cm without stand

\$100-\$200



Lot 289
青白玉鼻烟壶
PALE CELADON JADE SNUFF BOTTLE

Of ovoid form raised on a conforming foot, accompanied with a fitted stopper. H:6.5cm

\$400-\$600



Lot 290
嵌玉牌景泰蓝盒
JADE PLAQUE INLAID CLOISSONNE ENAMEL BOX

Of rectangular form with rounded corners, decorated with pomegranate blossoms against a black background, the cover inlaid with a jade plaque carved and pierced with a phoenix amidst clouds. 9.5cm x 7.2cm x 4.1cm

\$300-\$500



Lot 291
吴昌硕 (1844-1927) 款 菊石图
设色纸本 立轴
AFTER WU CHANGSHUO (1844-1927) CHRYSANTHEMUM

Depicting chrysanthemum and scholar's rock, color and ink on paper, signed by the artist with three seals, hanging scroll. 34cm x 133cm

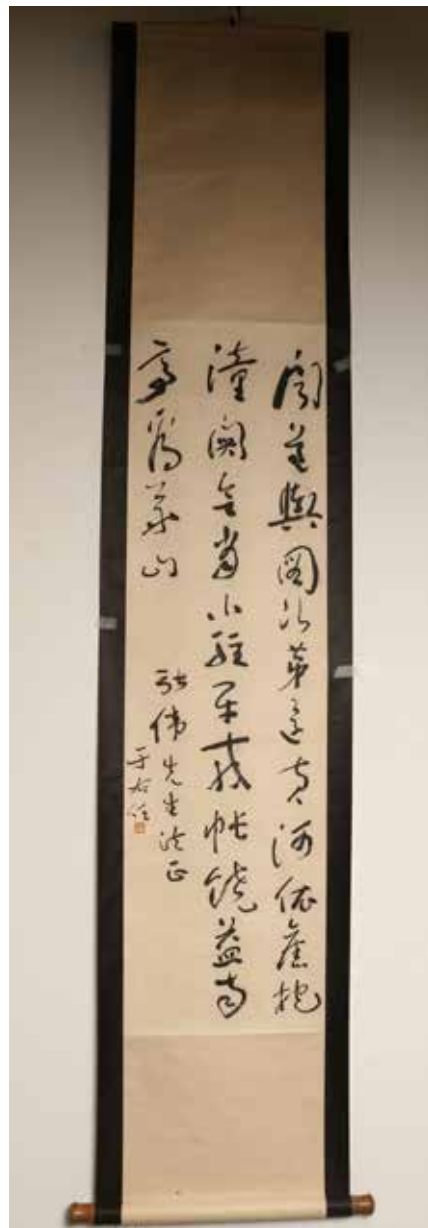
\$3000-\$4000



Lot 292
唐云 (1910-1993) 花鸟 设色纸本 立轴
TANG YUN (1910-1993) BIRD AND FLOWER

Depicting prunus, bamboo and a bird, color and ink on paper, signed by the artist with one seal, hanging scroll. 32cm x 89cm

\$1,500-\$2,500



Lot 293
于右任 (1879-1964) 草书条幅 水墨纸本 立轴
YU YOU REN (1879-1964) CALLOGRAPHY

Calligraphy. ink on paper, signed by the artist with one seal, hanging scroll. 33.5cm x 121cm

\$1,500-\$2,500



Lot 294

胡也佛 (1908-1980) 人物镜片 设色纸本
HU YEFUO (1908-1980) FIGURES

Depicting a lady with a garden scene, color, and ink on paper, signed by the artist with one seal. 40cm x 22.5cm

\$1,500-\$2,000



Lot 295

齐白石 (1864-1957) 款 葫芦图 设色纸本 立轴
AFTER QI BAISHI (1864-1957) GOURD

Depicting gourd and leaf, color and ink on paper, signed by the artist with four seals, hanging scroll. 36.5cm x 101 cm

\$5,000-\$8,000

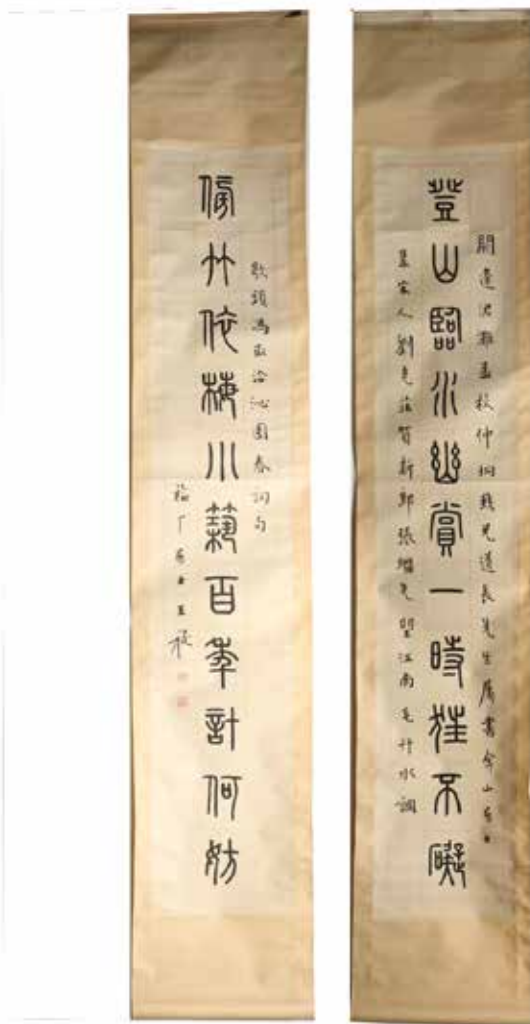


Lot 296

周文矩 (907-975) 款 麻姑献寿 设色纸本
AFTER ZHOU WENJU (907-975) MAGU PRESENTED LONGEVITY

Depicting Ma Gu presenting longevity, ink and color on paper, signed by the artist with one seal, 33cm x 75.3cm

\$1,000-\$2,000



Lot 297

王福厂 (1879-1960) 书法对联
WANG FUCHANG (1879-1960) CALLIGRAPHY
COUPLET

Calligraphy, ink on paper, signed by the artist with two seals, hanging scroll, 25.5cm x 137cm x 2

\$2,000-\$3,000

Lot 298

溥儒 (1896-1963) 瓷器图并题
PU RU (1896-1963) PORCELAIN
PICTURES

Depicting a white glaze plate with calligraphy, color, and ink on paper, signed by the artist with two seals. 44.3cm x 30cm

\$2,000-\$3,000



TERMS & CONDITIONS

STUNNING ARTS GALLERY AND AUCTION INC AS AGENT

The lots listed in this catalog will be offered by Stunning Arts Gallery and Auction Inc as owner or as agent for consignor(s) subject to the following terms and conditions. By bidding at auction you agree to be bound by these Conditions of Sale.

BEFORE THE AUCTION

Prospective buyers are strongly advised to personally examine any property in which they are interested before the auction takes place. All lots are sold "AS IS" and without recourse and neither Stunning Arts Gallery and Auction Inc nor its consignor(s) makes any warranties or representations, express or implied with respect to such lots. No statement, whether written or oral, and whether made in catalog, or in supplements to the catalog, an advertisement, a bill of sale, a saleroom posting or announcement, the remarks of an auctioneer, or otherwise, shall be deemed to create any warranty, representation or assumption of liability. It is the responsibility of prospective purchasers to inspect or have inspected each lot upon which they wish to bid, relying upon their own advisers, and to bid accordingly.

BIDDING IN THE SALE

Refusal of Admission Stunning Arts Gallery and Auction Inc has the right, at our complete discretion, to refuse admission to the premises or participation in any auction and to reject any bid.

Registration before Bidding

A prospective buyer must complete and sign a registration form and provide identification before bidding. We require bank or other financial references.

Bidding as Principal

To bid in person, the bidder will need to register for and collect a numbered paddle before the auction begins. Proof of identity will be required. Should you be the successful buyer of a lot, please ensure that your paddle can be seen by the auctioneer and that it is your number that is called out. All lots sold will be invoiced to the name and address in which the paddle has been registered and cannot be transferred to other names and addresses. When making a bid, a bidder is accepting personal liability to pay the purchase price, including the buyer's premium, all applicable taxes and all other applicable charges.

Absentee Bids

If the bidder cannot attend the auction, we will be happy to execute written bids on your behalf. Absentee bids in writing must be submitted to Stunning Arts Gallery and Auction Inc at least 24 hours prior to the sale by letter or fax. In the event of identical bids, the earliest received will take precedence.

Reserves

Each lot may be subject to an unpublished reserve which may be changed at any time by agreement between the auctioneer and the consignor.

Auctioneer's Discretion

The auctioneer has the right at his or her absolute and sole discretion to refuse any bid, to advance the bidding in such a manner as he or she may decide, to withdraw any lot, and in the case of error or dispute, and whether during or after the sale, to determine the successful bidder, to continue the bidding, to cancel the sale or to re-offer and resell the item in dispute. If any dispute arises after the sale, our sale record is conclusive.

Successful Bid

The highest bidder acknowledged by the auctioneer will be the purchaser. In the case of a tie bid, the winning bidder will be determined by the auctioneer at his or her sole discretion. In the event of a dispute between bidders, the auctioneer has final discretion to determine the successful bidder or to re-offer the lot in dispute.

AFTER THE SALE

Buyer's Premium

In addition to the hammer price, the buyer agrees to pay Stunning

Arts Gallery and Auction Inc a buyer's premium and the applicable sales tax added to the final total. Each lot sold is subject to a premium of 20% of the successful bid price of each lot up to and including \$50,000 and 18% on any amount in excess of \$50,000 as part of the purchase price. Online bidding is subject to a 23% buyers premium.

Deposit

The contact information provided by the purchase must be accurate and true. The auctioneer reserves the right to request a deposit to be provided before bidding and will be used against any and all purchases made at the auction.

Taxes

Unless exempted by law, the buyer is required to pay HST on the total purchase price including buyer's premium. For international buyers, taxes are not applicable when purchases are shipped out of country. Items shipped out of Ontario, the buyer is required to pay taxes as per the tax status of that province, whether is HST or GST.

Payment

Immediately after the purchase of a lot, the buyer shall pay or undertake to the satisfaction of the auctioneer with respect to payment of the whole or any part of the purchase price requested by the auctioneer, failing which the auctioneer in his sole discretion may cancel the sale, with or without re-offering the item for sale.

The buyer shall pay for all lots within 7 business days from the date of the sale, after which a late charge of 2% per month on the total invoice may be incurred or the auctioneer, in his sole discretion, may cancel the sale. The buyer shall not become the owner of the lot until paid for in full. Items must be removed within 10 days from the date of sale, after which storage charges may be incurred.

Each lot purchased, unless the sale is cancelled as above, shall be held by the auctioneer at his premises or at a public warehouse at the sole risk of the buyer until fully paid for and take away.

Payment for purchases must be by cash, INTERAC direct debit (Canadian clients in person only), certified cheque (U.S. and Overseas not applicable), bank draft, electronic transfer (fee applies), and VISA or MASTER or AMERICAN EXPRESS card.

Should the item not be paid for within the time limit stated, the auctioneer, without limitation of the rights of the consignor and the auctioneer against the buyer, may resell any of the articles affected.

SHIPPING

Shipping is provided at the buyers' expense. Stunning Arts Gallery will provide a list of shippers. The purchased items will be released with the buyers' written consent and until payment has been made in full. Shipping, packing and handling is at the entire risk of the buyer. SAG will have no liability of any loss or damage to such items.

竞投出价表 ABSENTEE/TELEPHONE BIDDING FORM

表格应以墨水笔填写，并电邮，邮寄或传真至本公司

FORMS SHOULD BE COMPLETED IN INK AND EMAILED, MAILED, OR FAXED TO THE AUCTION HOUSE

Name: 名字:				Telephone	Absentee
Phone: 联系电话:		Email: 电子邮件:			
Address: 地址:					
City: 城市:		Province: 省:		Postal Code: 邮编:	
Credit Card Number: 信用卡号码:				Expiry Date: 到期日期:	
Name on Card: 持卡人姓名:				CVV: 卡后三位安全码:	
Billing Address (if different): 账单邮寄地址:					

IMPORTANT 重要事项

Please note that the execution of written and telephone bids is offered as an additional service for no extra charge, and at the bidder's risk. It is undertaken subject to Stunning Arts' other commitments at the time of auction, Stunning Arts, therefore cannot accept liability for failure to place such bids, whether through negligence or otherwise. 请注意书面及电话竞投是免费提供之附加服务，风险由竞投人承担，而该等服务会在本公司于拍卖时其他承诺之限下进行；因此，无论是由于疏忽或其他原因引致，本公司无需就未能做出该竞投承担责任。

NUMBER 编号	DESCRIPTION 名称	MAXIMUM BID 最高竞投价
		CAD\$
		CAD\$
		CAD\$
		CAD\$
		CAD\$
		CAD\$
		CAD\$

DEPOSIT 押金

All absentee bidder and telephone bidder are requested by Stunning Arts to deliver to Stunning Arts a deposit of CAD\$2,000 or such higher amount as may be determined by Stunning Arts, and any financial references, guarantees and/or such other security as Stunning Arts may require in its absolute discretion as security for the bid. 本公司可要求电话竞拍者以及最高单价竞拍者完成预先登记程序及交付本公司 2,000 加币或其他由本公司决定之更大金额的定金及任何财务状况证明，担保或/及其他由本公司可全权酌情决定要求的抵押作为参加本公司竞投的保障。

The contract between the buyer and the seller is concluded on the striking of the auctioneer's hammer, and payment of the purchase price for any lot and any buyer's expenses is due 7 business days after the conclusion of the auction. 买家及卖家之合约于拍卖官击锤时订立，而阁下作为买家必须于拍卖会结束后 7 个工作日支付拍品之买入价及任何买家费用。

TELEPHONE NUMBER DURING THE SALE 拍卖联络电话:

FOR WRITTEN/FIXED BIDS 书面竞投

- Bids will be executed for the lowest price as is permitted by other bids or reserves. 竞投将以尽可能低之价格进行
- Where appropriate your written bids will be rounded down to the nearest amount consistent with the auctioneer's bidding increments. 如适当时，阁下之书面竞投价将会被大概调整至最接近拍卖官递增之竞投金额

FOR TELEPHONE BIDS 电话竞投

- Please clearly specify the telephone number on which you may be reached at the time of the sale, including the country code. We will call you from the saleroom shortly before your lot is offered. 请清楚注明于拍卖期间可联络阁下之电话号码，包括国家号码。我们会于阁下之拍品竞投前致电给阁下。

I agree that I am bound by the Condition of Business for Buyer and the Authenticity Guarantee which are published in the catalogue for the sale on purchases at auction that I make. If any bid is successful, I agree that all sales are subjected to a 20% buyer's premium added to the hammer price, 18% on any bids over CAD \$ 50,000. 本人同意接受图册内列明之给卖家的规则及保证书，是次拍卖会上的一切交易均受以上条款所约束。若竞投成功，本人愿意支付附加成交价之上的 20% 买家佣金，或以 50,000 加币以上成交的拍品之 18% 的买家佣金。

I consent to the use of this information and any other information obtained by Stunning Arts Gallery and Auction in accordance with the Guide for Absentee Bidders and Conditions of Business. I am aware that all telephone bid lines may be recorded. 本人同意 Stunning Arts Gallery and Auction 使用本人资料及根据给委托竞投者指引与给买家业务规则内而取得至其他资料。本人明白所有电话竞投会被录音。

SIGNED 签署 _____

DATE 日期 _____